

Data Path : Z:\pestpcbsrv\HPCHEM1\ECD_S\Data\PS011819\
 Data File : PS002863.D
 Signal(s) : Signal #1: ECD1A.ch Signal #2: ECD2B.ch
 Acq On : 18 Jan 2019 14:16
 Operator : EI\SJ
 Sample : K1153-02MSD
 Misc :
 ALS Vial : 14 Sample Multiplier: 1

Instrument :
 ECD_S
 ClientSampleId :
 RBR200044-RBR200027MSD

Integration File signal 1: autoint1.e
 Integration File signal 2: autoint2.e
 Quant Time: Jan 18 22:40:12 2019
 Quant Method : Z:\pestpcbsrv\HPCHEM1\ECD_S\Method\PS011719.M
 Quant Title : 8080.M
 QLast Update : Thu Jan 17 13:42:13 2019
 Response via : Initial Calibration
 Integrator: ChemStation

Volume Inj. : 2 µl
 Signal #1 Phase : Rtx-CLPesticides Signal #2 Phase: Rtx-CLPesticides2
 Signal #1 Info : 30M x 0.32mm x0.5 Signal #2 Info : 30M x 0.32mm x 0.25µm

	Compound	RT#1	RT#2	Resp#1	Resp#2	ng/ml	ng/ml

System Monitoring Compounds							
4) S	2,4-DCAA	11.306	10.801	176.5E6	174.4E6	489.313	432.418
Target Compounds							
1) T	Dalapon	2.861	2.326	322.0E6	458.6E6	649.524	912.031 #
2) T	3,5-DICHL...	9.732	8.960	319.4E6	321.4E6	594.957	646.974
3) T	4-Nitroph...	10.923	9.871	4074646	9334778	19.299	46.519 #
5) T	DICAMBA	11.614	11.082	950.9E6	953.0E6	634.874	654.640
6) T	MCP P	11.961	11.315	245.9E6	78867977	237.907	83.153 #
7) T	MCPA	12.208	11.690	231.8E6	134.1E6	138.067	76.727 #
8) T	DICHLORPROP	12.804	12.207	277.5E6	302.5E6	725.005	804.738
9) T	2,4-D	13.161	12.677	340.6E6	357.2E6	838.194	814.412
10) T	Pentachlo...	13.534	13.215	2894.5E6	2919.2E6	527.030	525.259
11) T	2,4,5-TP ...	14.409	13.839	1554.9E6	1627.6E6	746.725	750.895
12) T	2,4,5-T	14.806	14.403	1478.8E6	931.1E6	696.811	551.220
13) T	2,4-DB	15.554	15.054	235.0E6	201.6E6	911.283	735.936
14) T	DINOSEB	17.027	15.480	625.1E6	599.7E6	374.840	363.048
15) T	Picloram	16.796	16.709	1562.6E6	1561.4E6	579.991	532.691
16) T	DCPA	17.373	16.656	1338.5E6	1470.6E6	499.428	512.067

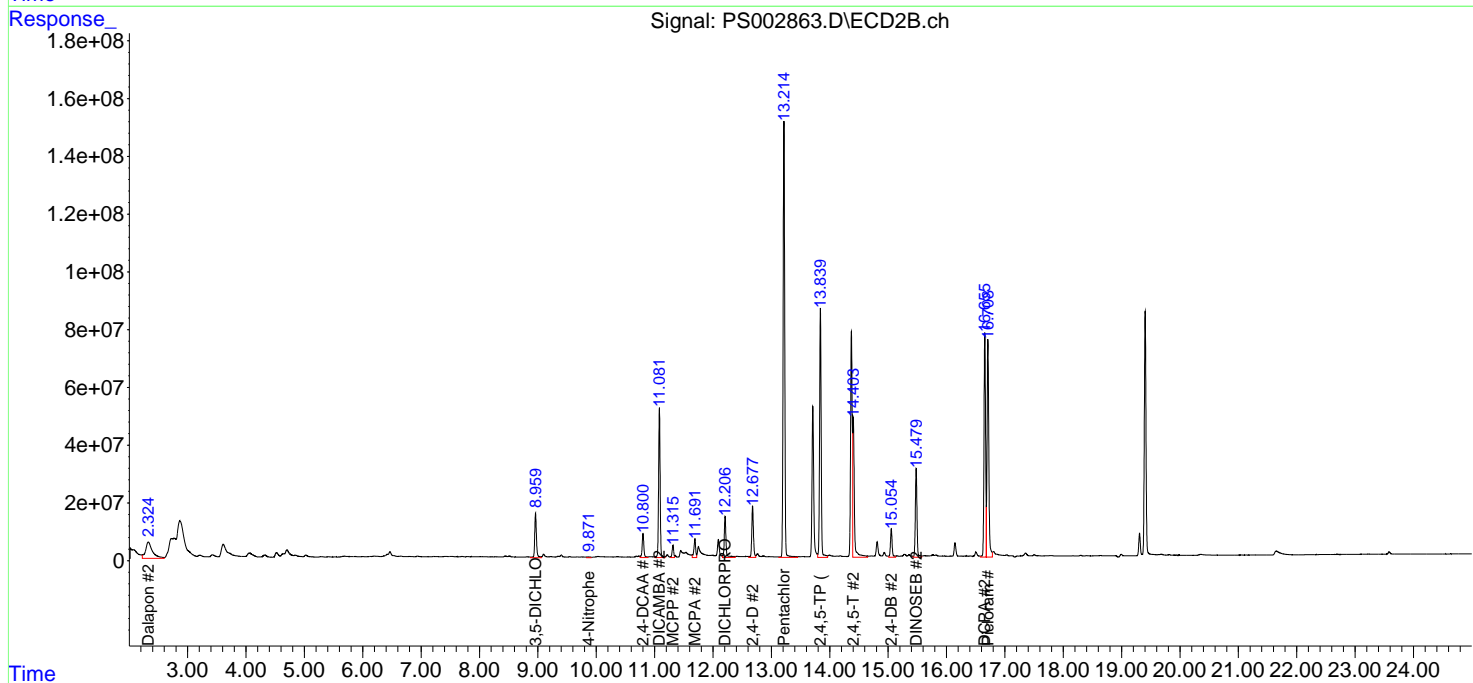
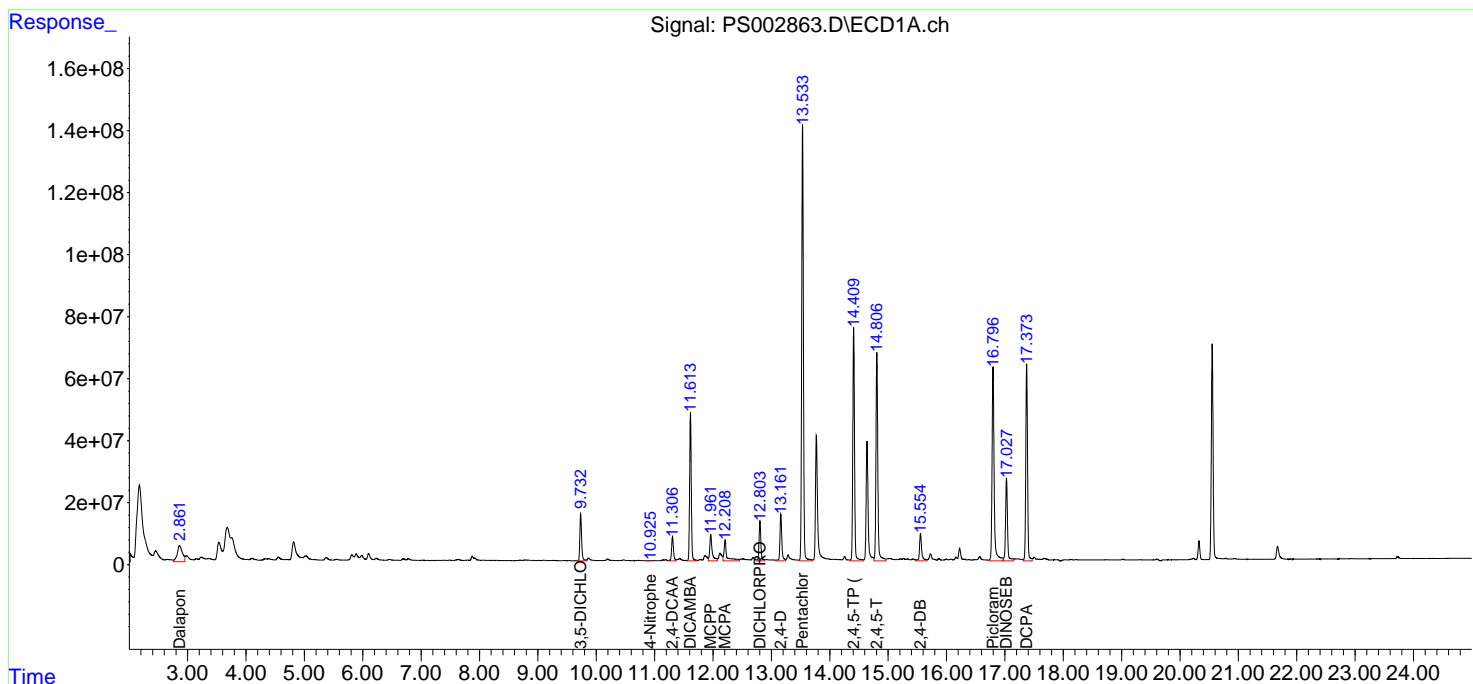
(f)=RT Delta > 1/2 Window (#)=Amounts differ by > 25% (m)=manual int.

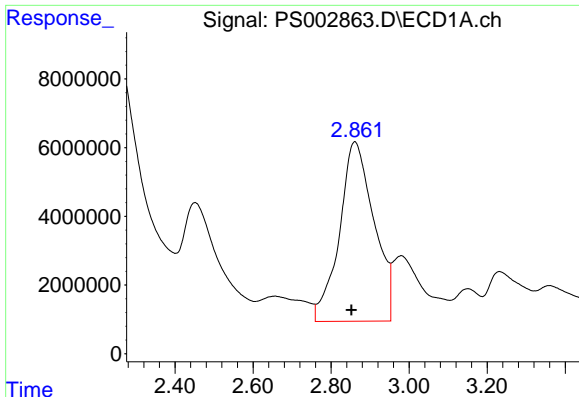
Data Path : Z:\pestpcbsrv\HPCHEM1\ECD_S\Data\PS011819\
 Data File : PS002863.D
 Signal(s) : Signal #1: ECD1A.ch Signal #2: ECD2B.ch
 Acq On : 18 Jan 2019 14:16
 Operator : EI\SJ
 Sample : K1153-02MSD
 Misc :
 ALS Vial : 14 Sample Multiplier: 1

Instrument :
 ECD_S
 Client Sample Id :
 RBR200044-RBR200027MSD

Integration File signal 1: autoint1.e
 Integration File signal 2: autoint2.e
 Quant Time: Jan 18 22:40:12 2019
 Quant Method : Z:\pestpcbsrv\HPCHEM1\ECD_S\Method\PS011719.M
 Quant Title : 8080.M
 QLast Update : Thu Jan 17 13:42:13 2019
 Response via : Initial Calibration
 Integrator: ChemStation

Volume Inj. : 2 µl
 Signal #1 Phase : Rtx-CLPesticides Signal #2 Phase: Rtx-CLPesticides2
 Signal #1 Info : 30M x 0.32mm x0.5 Signal #2 Info : 30M x 0.32mm x 0.25µm

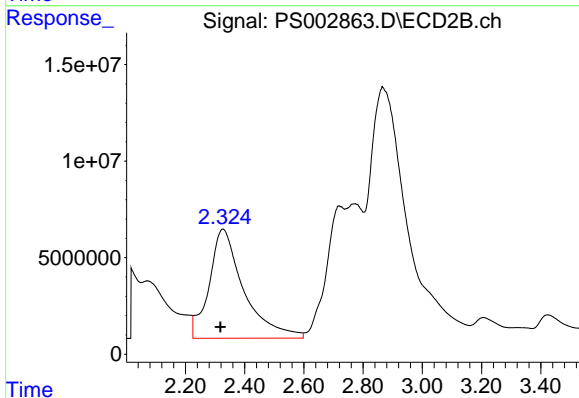




#1 Dalapon

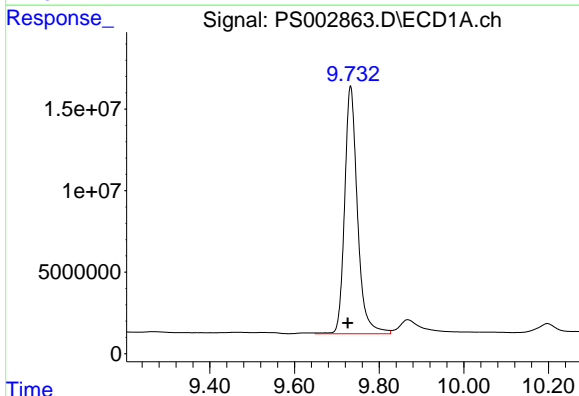
R.T.: 2.861 min
 Delta R.T.: 0.009 min
 Response: 322032548
 Conc: 649.52 ng/ml

Instrument :
 ECD_S
 ClientSampleId :
 RBR200044-RBR200027MSD



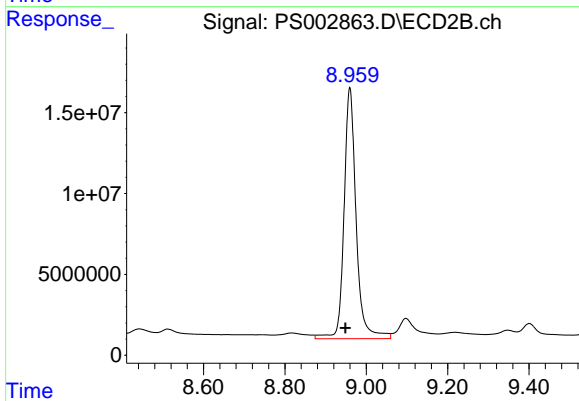
#1 Dalapon

R.T.: 2.326 min
 Delta R.T.: 0.007 min
 Response: 458626567
 Conc: 912.03 ng/ml



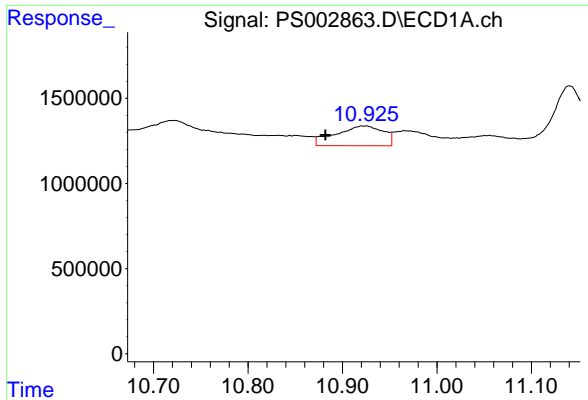
#2 3,5-DICHLOROBENZOIC ACID

R.T.: 9.732 min
 Delta R.T.: 0.007 min
 Response: 319421519
 Conc: 594.96 ng/ml



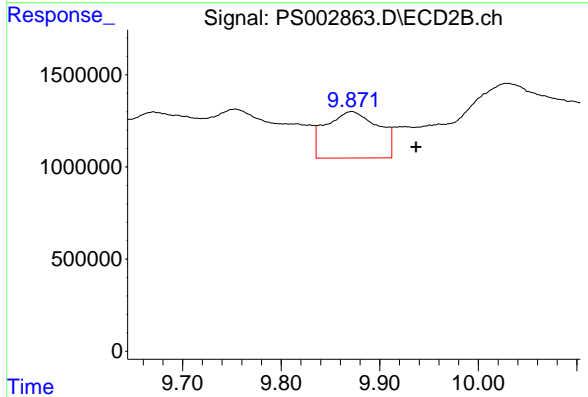
#2 3,5-DICHLOROBENZOIC ACID

R.T.: 8.960 min
 Delta R.T.: 0.011 min
 Response: 321351708
 Conc: 646.97 ng/ml

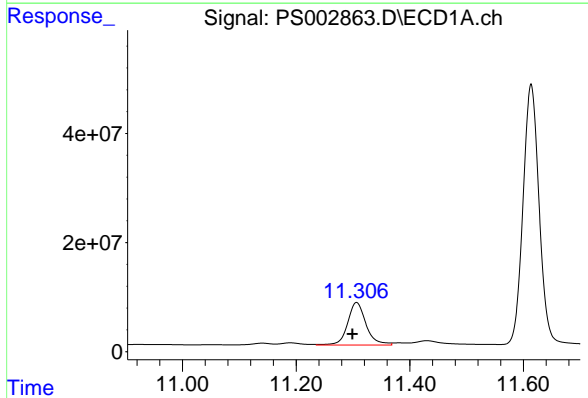


#3 4-Nitrophenol
 R.T.: 10.923 min
 Delta R.T.: 0.042 min
 Response: 4074646
 Conc: 19.30 ng/ml

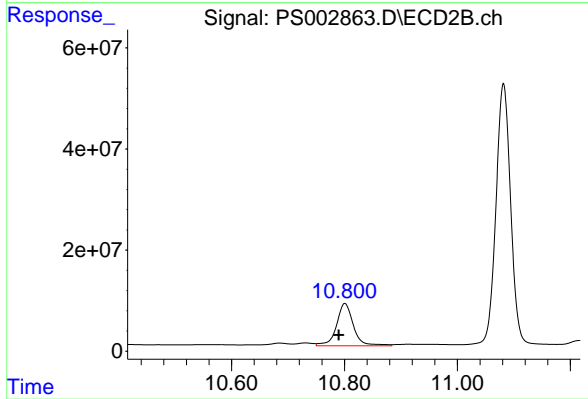
Instrument :
 ECD_S
 ClientSampleId :
 RBR200044-RBR200027MSD



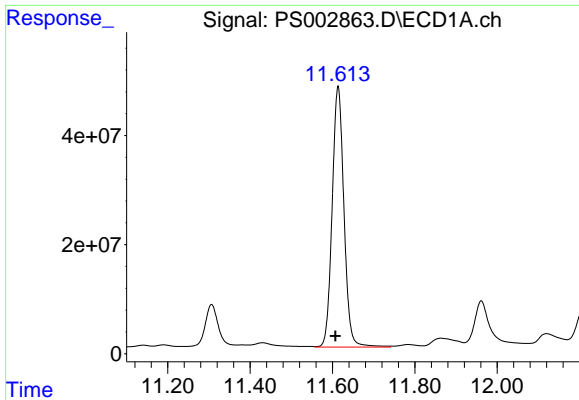
#3 4-Nitrophenol
 R.T.: 9.871 min
 Delta R.T.: -0.065 min
 Response: 9334778
 Conc: 46.52 ng/ml



#4 2,4-DCAA
 R.T.: 11.306 min
 Delta R.T.: 0.007 min
 Response: 176487968
 Conc: 489.31 ng/ml

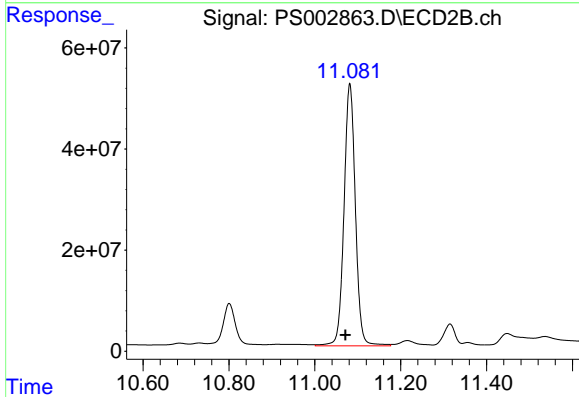


#4 2,4-DCAA
 R.T.: 10.801 min
 Delta R.T.: 0.011 min
 Response: 174402568
 Conc: 432.42 ng/ml

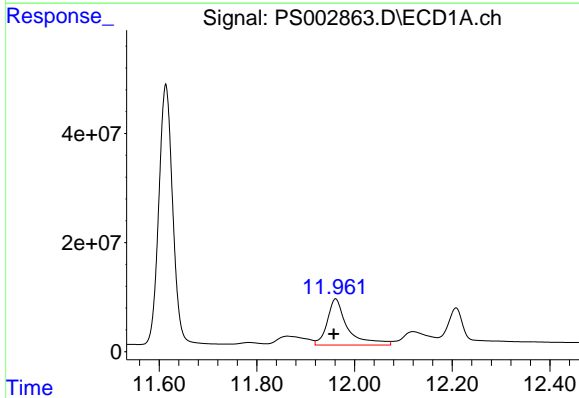


#5 DICAMBA
 R.T.: 11.614 min
 Delta R.T.: 0.007 min
 Response: 950904053
 Conc: 634.87 ng/ml

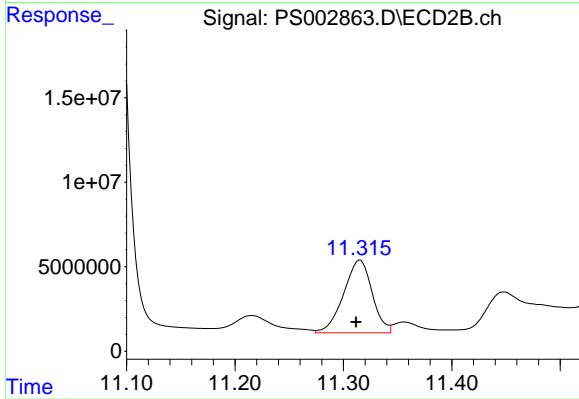
Instrument :
 ECD_S
 ClientSampleId :
 RBR200044-RBR200027MSD



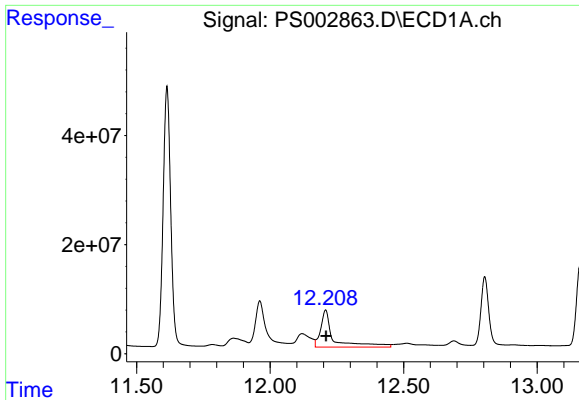
#5 DICAMBA
 R.T.: 11.082 min
 Delta R.T.: 0.010 min
 Response: 953011589
 Conc: 654.64 ng/ml



#6 MCPP
 R.T.: 11.961 min
 Delta R.T.: 0.004 min
 Response: 245926390
 Conc: 237.91 ug/ml



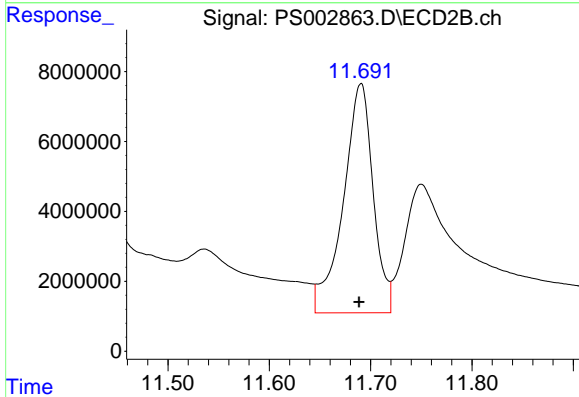
#6 MCPP
 R.T.: 11.315 min
 Delta R.T.: 0.003 min
 Response: 78867977
 Conc: 83.15 ug/ml



#7 MCPA

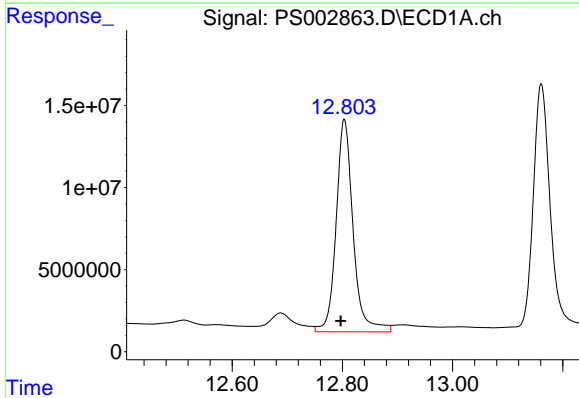
R.T.: 12.208 min
 Delta R.T.: -0.002 min
 Response: 231783726
 Conc: 138.07 ug/ml

Instrument :
 ECD_S
 ClientSampleId :
 RBR200044-RBR200027MSD



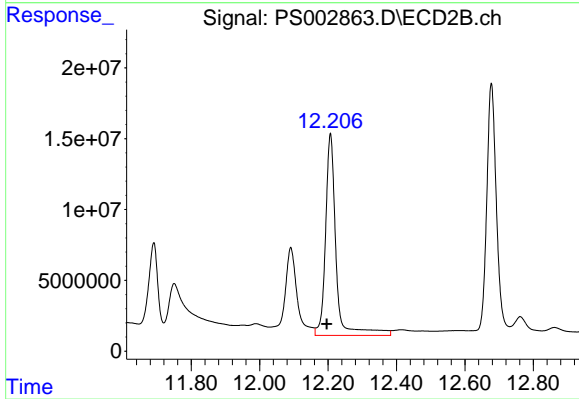
#7 MCPA

R.T.: 11.690 min
 Delta R.T.: 0.002 min
 Response: 134098671
 Conc: 76.73 ug/ml



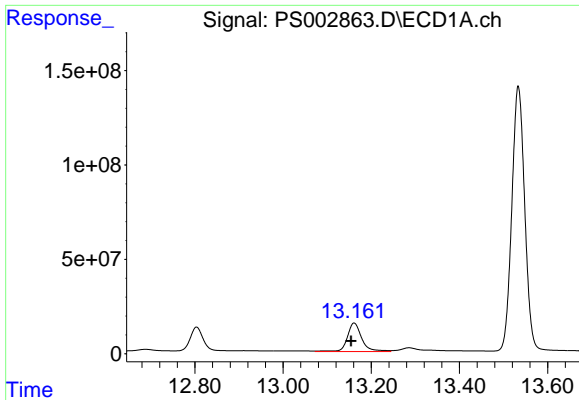
#8 DICHLORPROP

R.T.: 12.804 min
 Delta R.T.: 0.006 min
 Response: 277496271
 Conc: 725.00 ng/ml



#8 DICHLORPROP

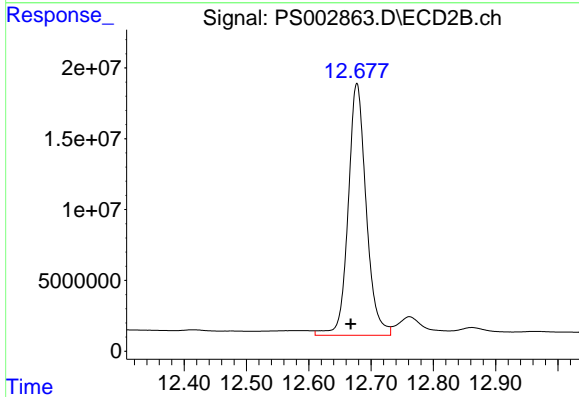
R.T.: 12.207 min
 Delta R.T.: 0.010 min
 Response: 302456999
 Conc: 804.74 ng/ml



#9 2,4-D

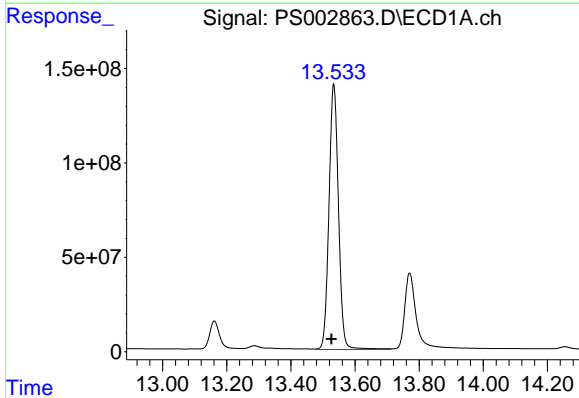
R.T.: 13.161 min
 Delta R.T.: 0.007 min
 Response: 340552517
 Conc: 838.19 ng/ml

Instrument :
 ECD_S
 ClientSampleId :
 RBR200044-RBR200027MSD



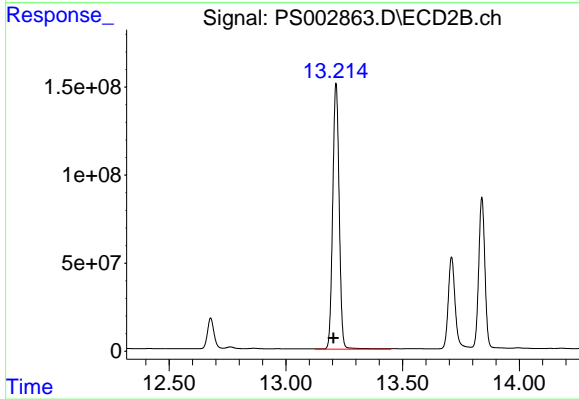
#9 2,4-D

R.T.: 12.677 min
 Delta R.T.: 0.010 min
 Response: 357244486
 Conc: 814.41 ng/ml



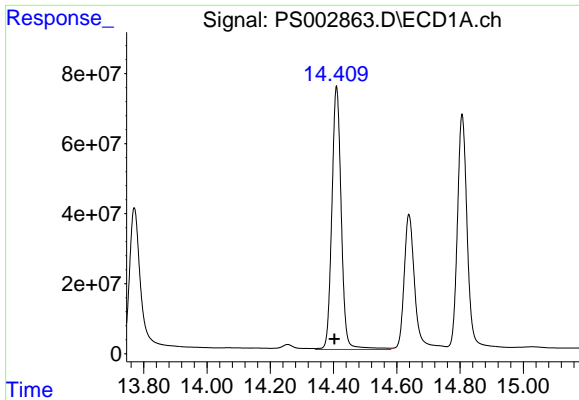
#10 Pentachlorophenol

R.T.: 13.534 min
 Delta R.T.: 0.007 min
 Response: 2894521302
 Conc: 527.03 ng/ml



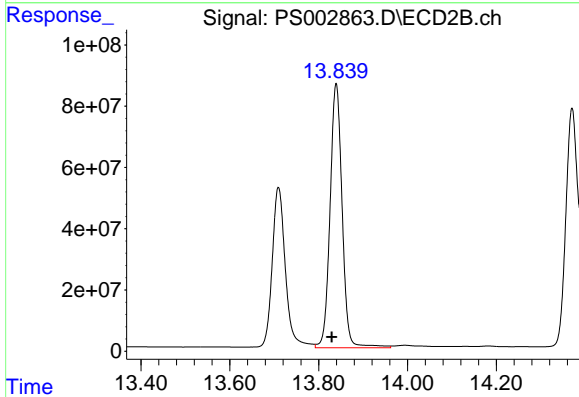
#10 Pentachlorophenol

R.T.: 13.215 min
 Delta R.T.: 0.011 min
 Response: 2919184209
 Conc: 525.26 ng/ml

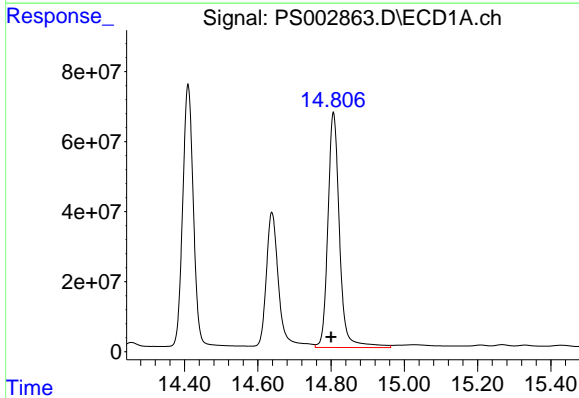


#11 2,4,5-TP (SILVEX)
 R.T.: 14.409 min
 Delta R.T.: 0.006 min
 Response: 1554936617
 Conc: 746.73 ng/ml

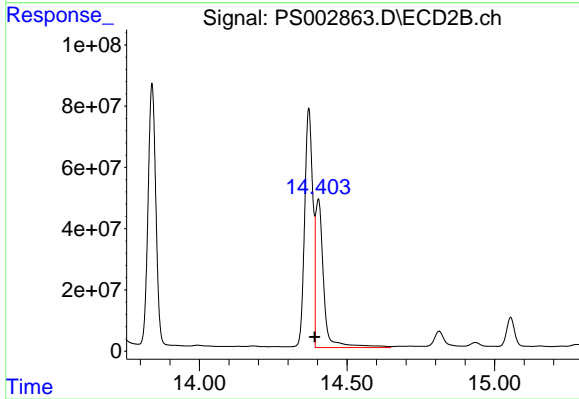
Instrument :
 ECD_S
 ClientSampleId :
 RBR200044-RBR200027MSD



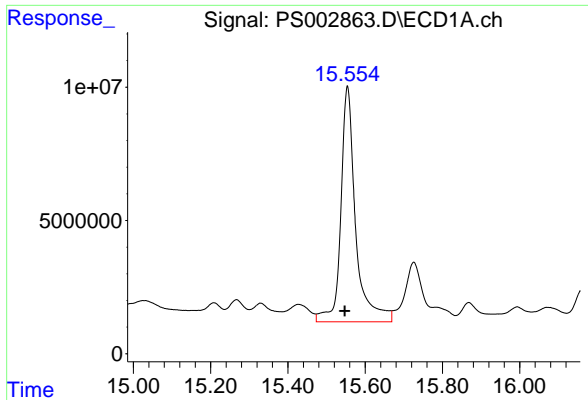
#11 2,4,5-TP (SILVEX)
 R.T.: 13.839 min
 Delta R.T.: 0.010 min
 Response: 1627564102
 Conc: 750.89 ng/ml



#12 2,4,5-T
 R.T.: 14.806 min
 Delta R.T.: 0.006 min
 Response: 1478788592
 Conc: 696.81 ng/ml



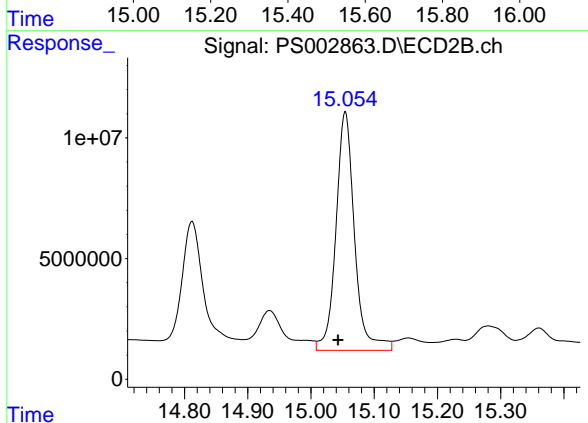
#12 2,4,5-T
 R.T.: 14.403 min
 Delta R.T.: 0.011 min
 Response: 931077029
 Conc: 551.22 ng/ml



#13 2,4-DB

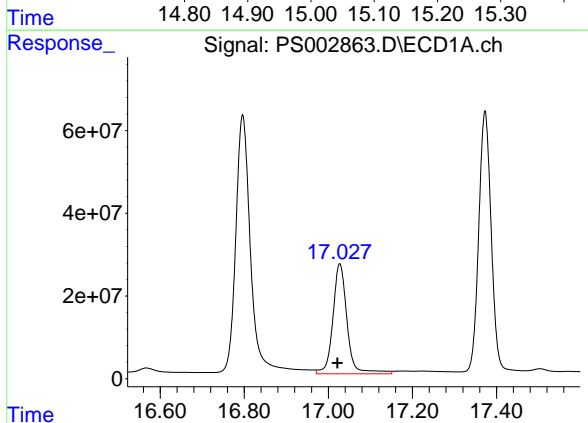
R.T.: 15.554 min
 Delta R.T.: 0.008 min
 Response: 234991533
 Conc: 911.28 ng/ml

Instrument :
 ECD_S
 ClientSampleId :
 RBR200044-RBR200027MSD



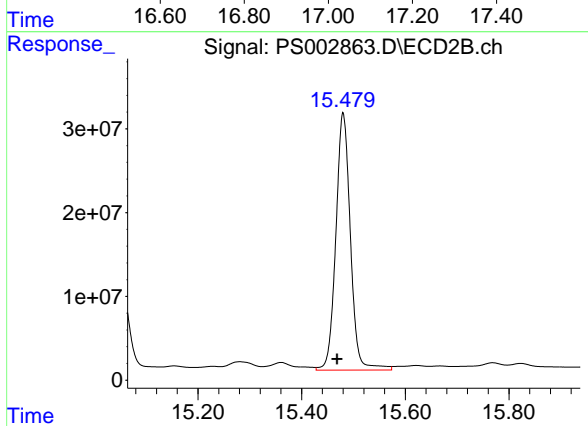
#13 2,4-DB

R.T.: 15.054 min
 Delta R.T.: 0.011 min
 Response: 201568135
 Conc: 735.94 ng/ml



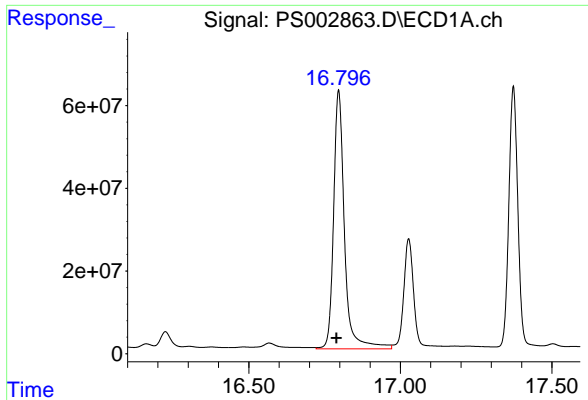
#14 DINOSEB

R.T.: 17.027 min
 Delta R.T.: 0.005 min
 Response: 625091156
 Conc: 374.84 ng/ml



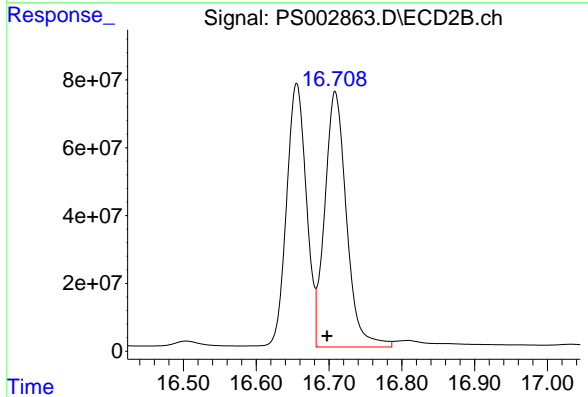
#14 DINOSEB

R.T.: 15.480 min
 Delta R.T.: 0.011 min
 Response: 599650631
 Conc: 363.05 ng/ml

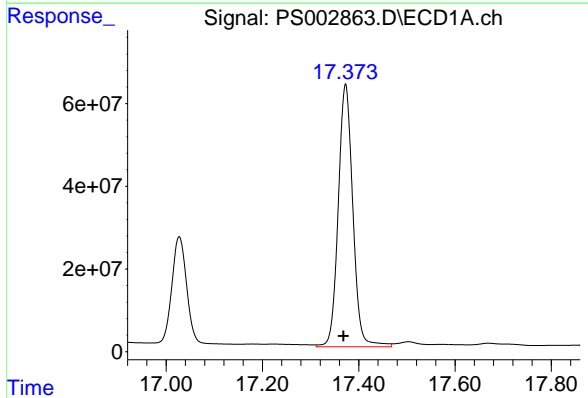


#15 Picloram
 R.T.: 16.796 min
 Delta R.T.: 0.007 min
 Response: 1562618127
 Conc: 579.99 ng/ml

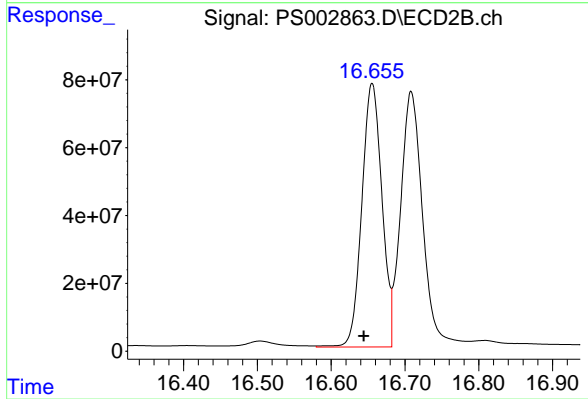
Instrument :
 ECD_S
ClientSampleId :
 RBR200044-RBR200027MSD



#15 Picloram
 R.T.: 16.709 min
 Delta R.T.: 0.011 min
 Response: 1561441529
 Conc: 532.69 ng/ml



#16 DCPA
 R.T.: 17.373 min
 Delta R.T.: 0.004 min
 Response: 1338507909
 Conc: 499.43 ng/ml



#16 DCPA
 R.T.: 16.656 min
 Delta R.T.: 0.011 min
 Response: 1470627134
 Conc: 512.07 ng/ml