

Data Path : Z:\pestpcbsrv\HPCHEM1\ECD\_S\Data\PS011819\  
 Data File : PS002896.D  
 Signal(s) : Signal #1: ECD1A.ch Signal #2: ECD2B.ch  
 Acq On : 19 Jan 2019 07:20  
 Operator : EI\SJ  
 Sample : K1173-08  
 Misc :  
 ALS Vial : 39 Sample Multiplier: 1

**Instrument :**  
 ECD\_S  
**ClientSampled :**  
 RT-3425

**Manual Integrations**  
**APPROVED**

Sohil  
 1/21/2019 11:47:37 AM

Integration File signal 1: autoint1.e  
 Integration File signal 2: autoint2.e  
 Quant Time: Jan 21 00:27:12 2019  
 Quant Method : Z:\pestpcbsrv\HPCHEM1\ECD\_S\Method\PS011719.M  
 Quant Title : 8080.M  
 QLast Update : Thu Jan 17 13:42:13 2019  
 Response via : Initial Calibration  
 Integrator: ChemStation

Volume Inj. : 2 µl  
 Signal #1 Phase : Rtx-CLPesticides Signal #2 Phase: Rtx-CLPesticides2  
 Signal #1 Info : 30M x 0.32mm x0.5 Signal #2 Info : 30M x 0.32mm x 0.25µm

Compound	RT#1	RT#2	Resp#1	Resp#2	ng/ml	ng/ml
-----						
System Monitoring Compounds						
4) S 2,4-DCAA	11.326	10.821	103.6E6	107.7E6	287.163m	266.974m

Target Compounds

(f)=RT Delta > 1/2 Window (#)=Amounts differ by > 25% (m)=manual int.

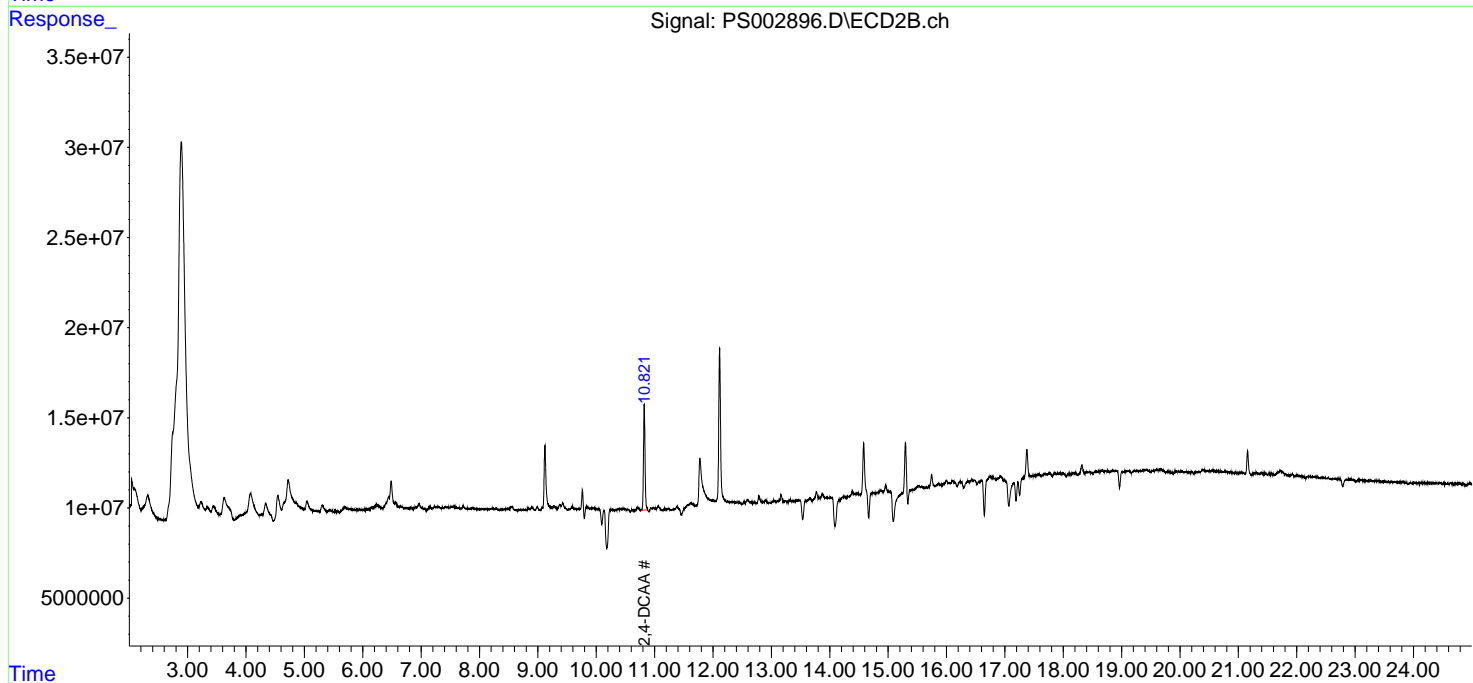
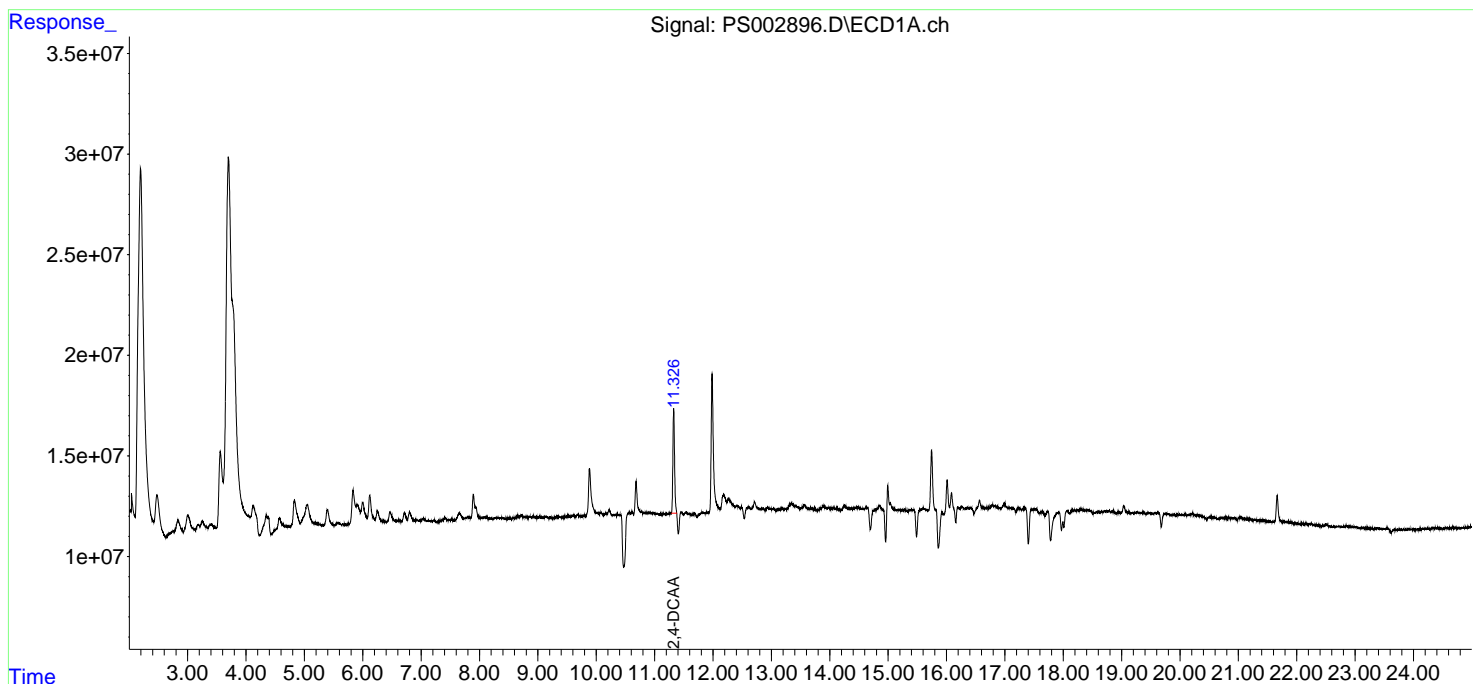
Data Path : Z:\pestpcbsrv\HPCHEM1\ECD\_S\Data\PS011819\  
 Data File : PS002896.D  
 Signal(s) : Signal #1: ECD1A.ch Signal #2: ECD2B.ch  
 Acq On : 19 Jan 2019 07:20  
 Operator : EI\SJ  
 Sample : K1173-08  
 Misc :  
 ALS Vial : 39 Sample Multiplier: 1

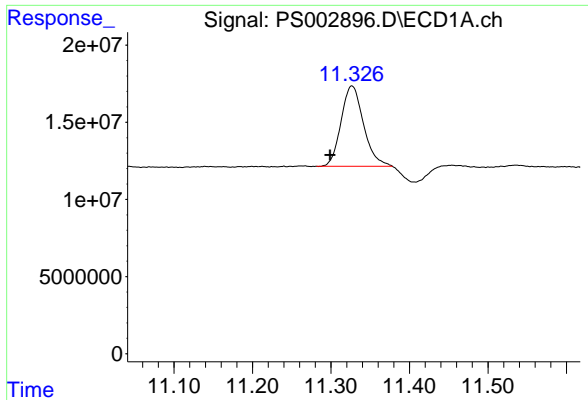
**Instrument :**  
 ECD\_S  
**ClientSampled :**  
 RT-3425

**Manual Integrations**  
**APPROVED**  
 Sohil  
 1/21/2019 11:47:37 AM

Integration File signal 1: autoint1.e  
 Integration File signal 2: autoint2.e  
 Quant Time: Jan 21 00:27:12 2019  
 Quant Method : Z:\pestpcbsrv\HPCHEM1\ECD\_S\Method\PS011719.M  
 Quant Title : 8080.M  
 QLast Update : Thu Jan 17 13:42:13 2019  
 Response via : Initial Calibration  
 Integrator: ChemStation

Volume Inj. : 2 µl  
 Signal #1 Phase : Rtx-CLPesticides Signal #2 Phase: Rtx-CLPesticides2  
 Signal #1 Info : 30M x 0.32mm x0.5 Signal #2 Info : 30M x 0.32mm x 0.25µm





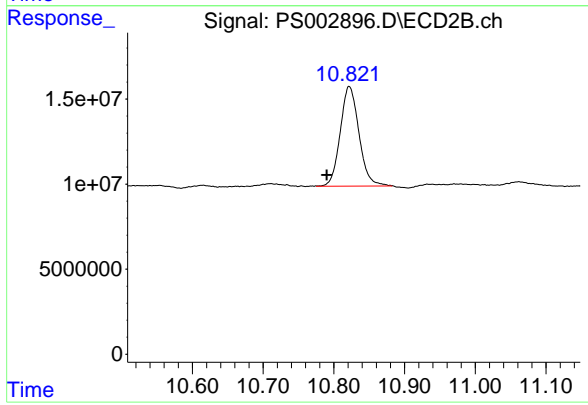
#4 2,4-DCAA

R.T.: 11.326 min  
Delta R.T.: 0.027 min  
Response: 103575497  
Conc: 287.16 ng/ml m

Instrument :  
ECD\_S  
ClientSampled :  
RT-3425

Manual Integrations  
APPROVED

Sohil  
1/21/2019 11:47:37 AM



#4 2,4-DCAA

R.T.: 10.821 min  
Delta R.T.: 0.031 min  
Response: 107675525  
Conc: 266.97 ng/ml m