

Data Path : Z:\pestpcbsrv\HPCHEM1\ECD_S\Data\PS011822\
 Data File : PS018056.D
 Signal(s) : Signal #1: ECD1A.ch Signal #2: ECD2B.ch
 Acq On : 18 Jan 2022 10:40
 Operator : AJ\MA
 Sample : HSTDCCC750
 Misc :
 ALS Vial : 3 Sample Multiplier: 1

Instrument :
 ECD_S
 ClientSampleId :
 HSTDCCC750

Integration File signal 1: autoint1.e
 Integration File signal 2: autoint2.e
 Quant Time: Jan 18 15:03:36 2022
 Quant Method : Z:\pestpcbsrv\HPCHEM1\ECD_S\Method\PS010522.M
 Quant Title : 8080.M
 QLast Update : Thu Jan 06 10:21:08 2022
 Response via : Initial Calibration
 Integrator: ChemStation

Volume Inj. : 2 µl
 Signal #1 Phase : Rtx-CLPesticides Signal #2 Phase: Rtx-CLPesticides2
 Signal #1 Info : 30M x 0.32mm x0.5 Signal #2 Info : 30M x 0.32mm x 0.25µm

	Compound	RT#1	RT#2	Resp#1	Resp#2	ng/ml	ng/ml

System Monitoring Compounds							
4) S	2,4-DCAA	7.049	6.645	1124.7E6	451.9E6	778.101	778.869
Target Compounds							
1) T	Dalapon	2.910	2.417	1705.0E6	518.2E6	694.991	677.721
2) T	3,5-DICHL...	6.288	5.860	1515.5E6	640.1E6	704.482	723.629
3) T	4-Nitroph...	6.875	6.279	658.7E6	246.0E6	815.542	802.660
5) T	DICAMBA	7.236	6.799	4421.3E6	1859.9E6	708.036	707.441
6) T	MCP P	7.406	6.894	331.3E6	149.3E6	70.951	69.406
7) T	MCPA	7.553	7.104	473.7E6	210.0E6	71.003	70.377
8) T	DICHLORPROP	7.922	7.410	1102.6E6	469.6E6	700.913	703.584
9) T	2,4-D	8.149	7.699	1345.5E6	561.5E6	738.930	762.935
10) T	Pentachlo...	8.449	8.112	15131.8E6	5905.6E6	716.262	701.183
11) T	2,4,5-TP ...	8.999	8.475	6086.1E6	2569.6E6	719.215	720.847
12) T	2,4,5-T	9.281	8.851	6382.5E6	2487.0E6	720.038	760.329
13) T	2,4-DB	9.829	9.354	1345.0E6	328.9E6	813.670	743.243
14) T	DINOSEB	10.976	9.675	4613.3E6	1778.5E6	702.496	712.828
15) T	Picloram	10.800	10.653	9333.4E6	3621.0E6	781.956	774.353
16) T	DCPA	11.247	10.601	7788.2E6	3148.9E6	720.813	713.151

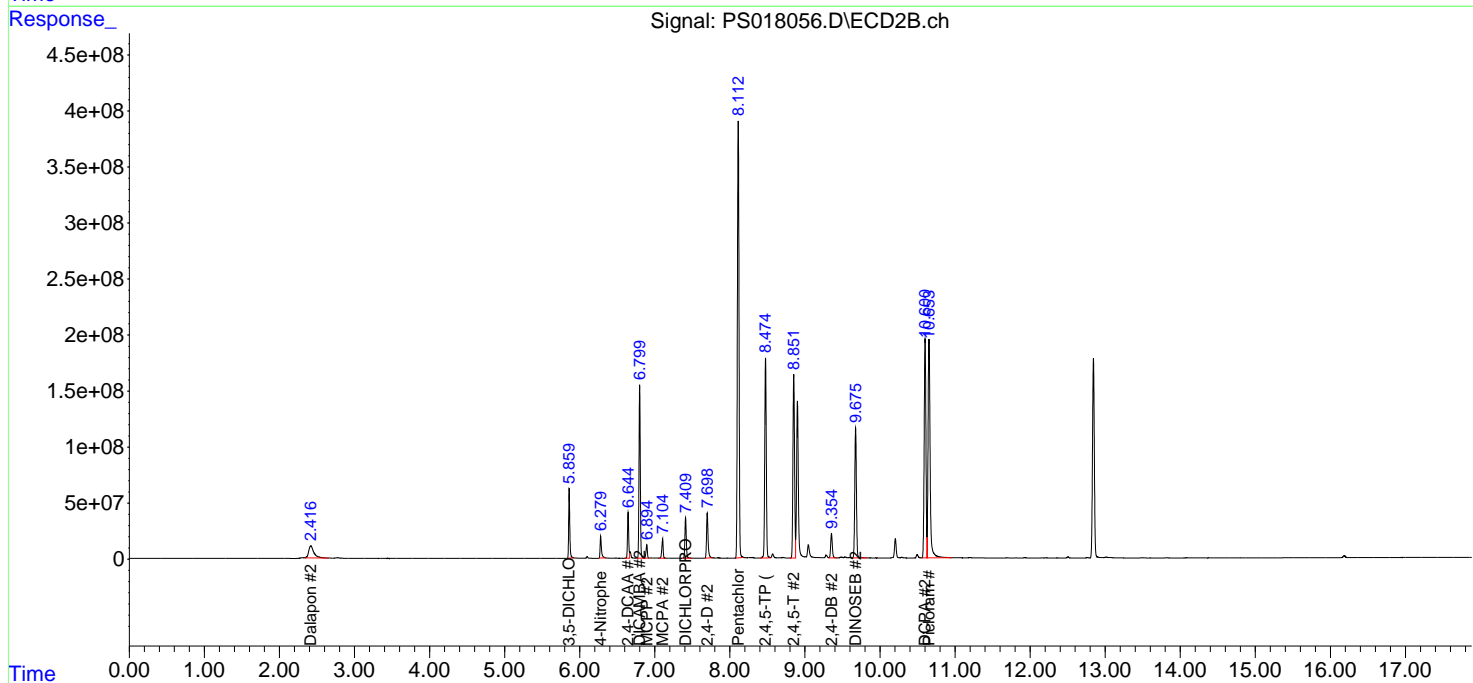
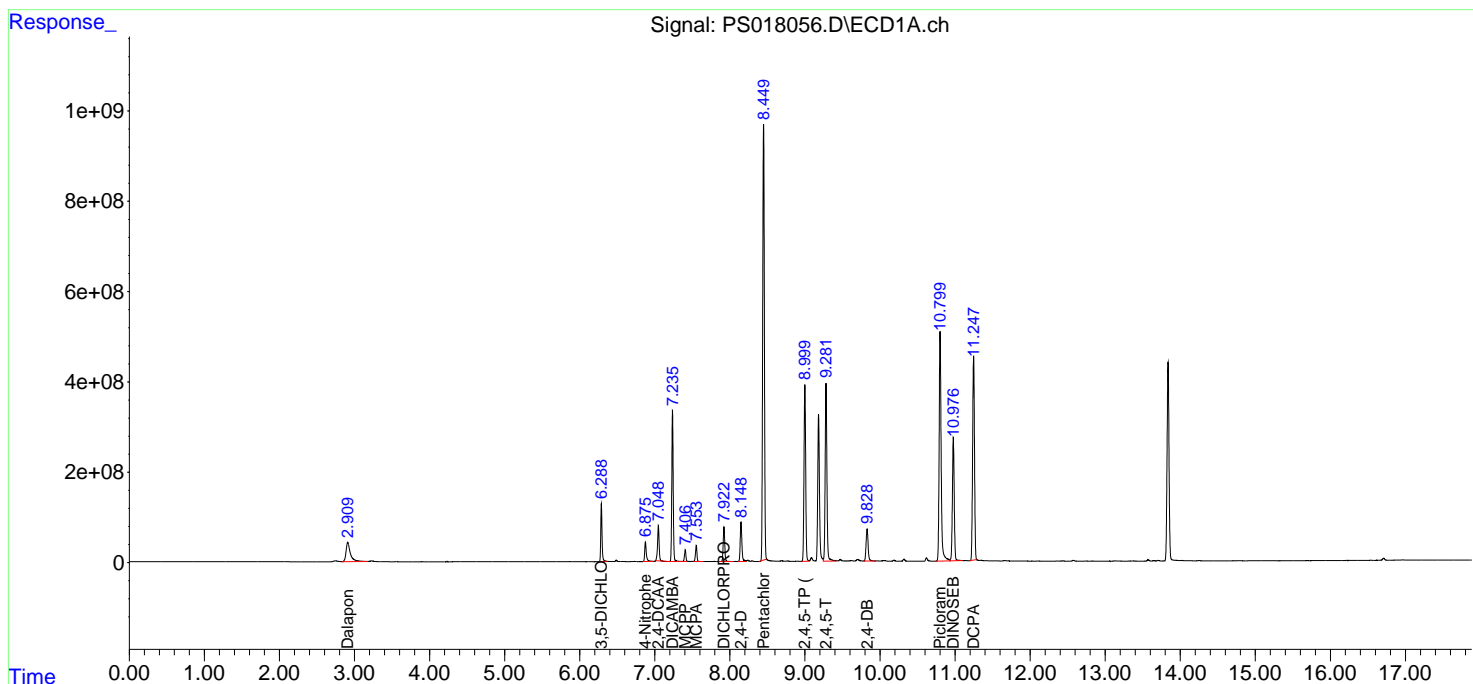
(f)=RT Delta > 1/2 Window (#)=Amounts differ by > 25% (m)=manual int.

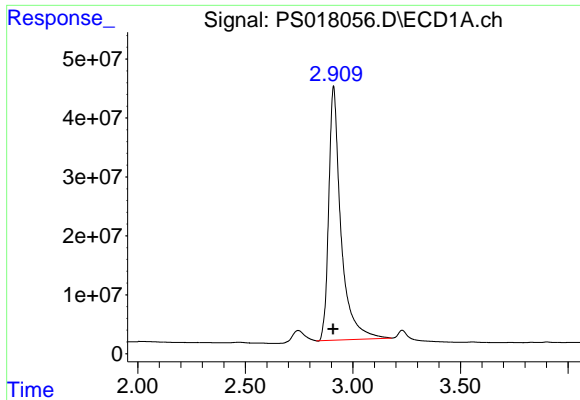
Data Path : Z:\pestpcbsrv\HPCHEM1\ECD_S\Data\PS011822\
 Data File : PS018056.D
 Signal(s) : Signal #1: ECD1A.ch Signal #2: ECD2B.ch
 Acq On : 18 Jan 2022 10:40
 Operator : AJ\MA
 Sample : HSTDCCC750
 Misc :
 ALS Vial : 3 Sample Multiplier: 1

Instrument :
 ECD_S
 ClientSampleId :
 HSTDCCC750

Integration File signal 1: autoint1.e
 Integration File signal 2: autoint2.e
 Quant Time: Jan 18 15:03:36 2022
 Quant Method : Z:\pestpcbsrv\HPCHEM1\ECD_S\Method\PS010522.M
 Quant Title : 8080.M
 QLast Update : Thu Jan 06 10:21:08 2022
 Response via : Initial Calibration
 Integrator: ChemStation

Volume Inj. : 2 µl
 Signal #1 Phase : Rtx-CLPesticides Signal #2 Phase: Rtx-CLPesticides2
 Signal #1 Info : 30M x 0.32mm x 0.5 Signal #2 Info : 30M x 0.32mm x 0.25µm

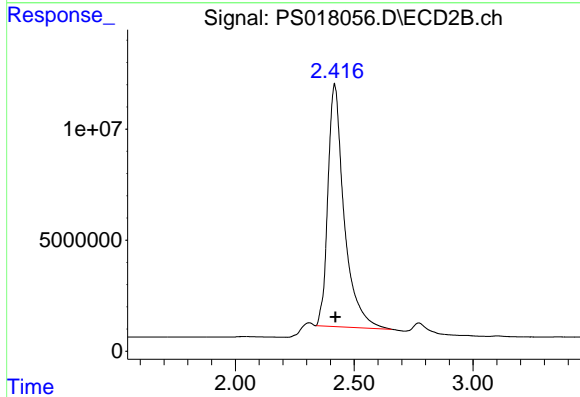




#1 Dalapon

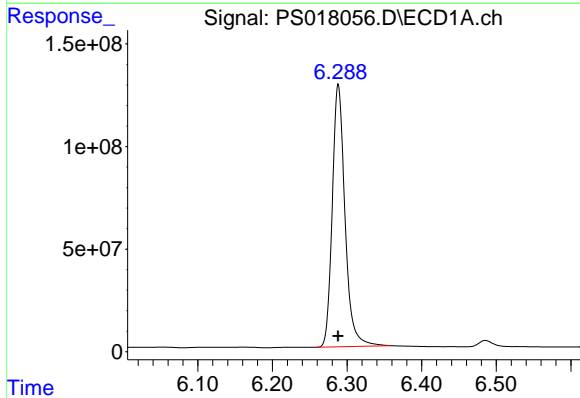
R.T.: 2.910 min
 Delta R.T.: 0.000 min
 Response: 1704969794
 Conc: 694.99 ng/ml

Instrument :
 ECD_S
 ClientSampleId :
 HSTDCCC750



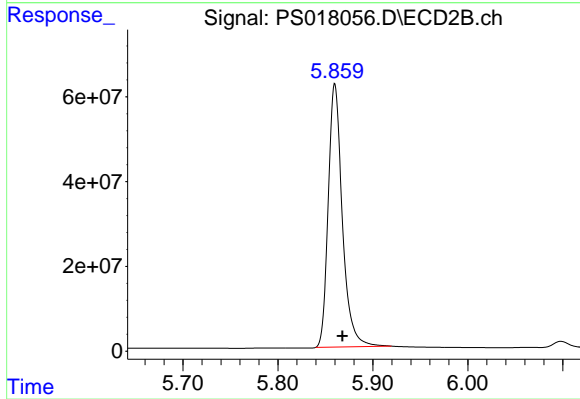
#1 Dalapon

R.T.: 2.417 min
 Delta R.T.: -0.004 min
 Response: 518245338
 Conc: 677.72 ng/ml



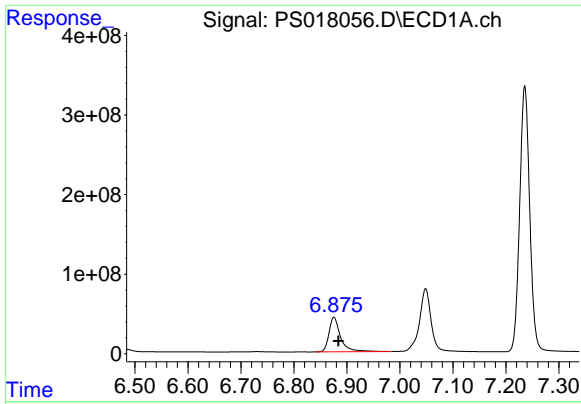
#2 3,5-DICHLOROBENZOIC ACID

R.T.: 6.288 min
 Delta R.T.: 0.000 min
 Response: 1515513138
 Conc: 704.48 ng/ml



#2 3,5-DICHLOROBENZOIC ACID

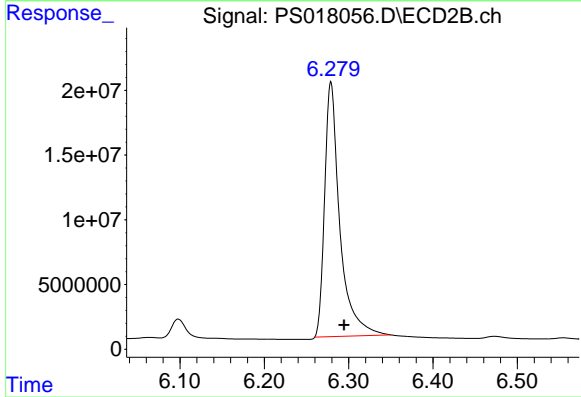
R.T.: 5.860 min
 Delta R.T.: -0.008 min
 Response: 640144026
 Conc: 723.63 ng/ml



#3 4-Nitrophenol

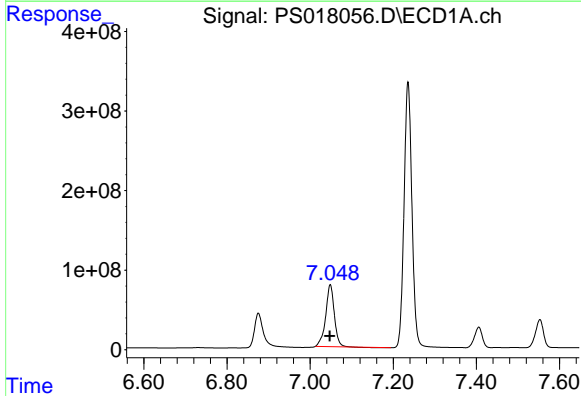
R.T.: 6.875 min
 Delta R.T.: -0.009 min
 Response: 658700069
 Conc: 815.54 ng/ml

Instrument :
 ECD_S
 ClientSampleId :
 HSTDCCC750



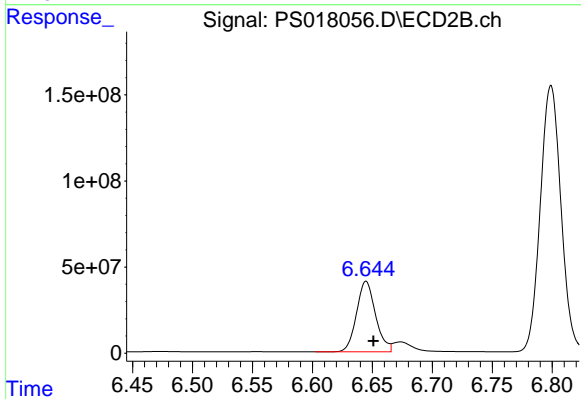
#3 4-Nitrophenol

R.T.: 6.279 min
 Delta R.T.: -0.016 min
 Response: 246033022
 Conc: 802.66 ng/ml



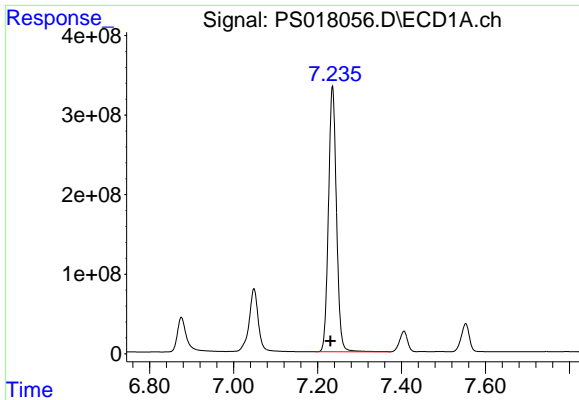
#4 2,4-DCAA

R.T.: 7.049 min
 Delta R.T.: 0.001 min
 Response: 1124735624
 Conc: 778.10 ng/ml



#4 2,4-DCAA

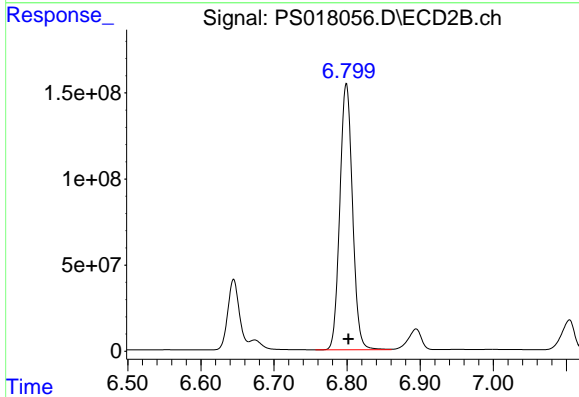
R.T.: 6.645 min
 Delta R.T.: -0.006 min
 Response: 451937781
 Conc: 778.87 ng/ml



#5 DICAMBA

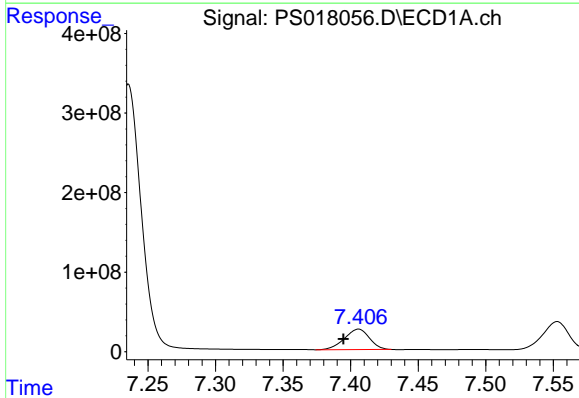
R.T.: 7.236 min
 Delta R.T.: 0.005 min
 Response: 4421269955
 Conc: 708.04 ng/ml

Instrument :
 ECD_S
 ClientSampleId :
 HSTDCCC750



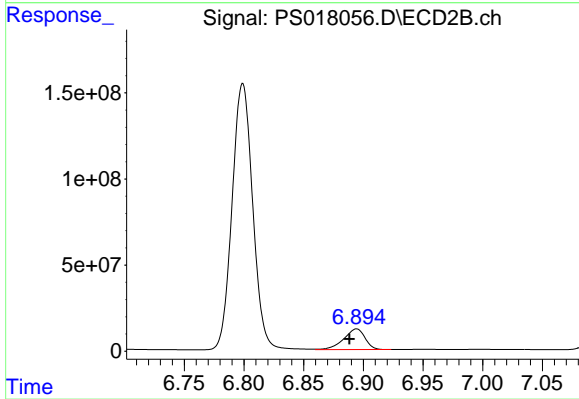
#5 DICAMBA

R.T.: 6.799 min
 Delta R.T.: -0.003 min
 Response: 1859901028
 Conc: 707.44 ng/ml



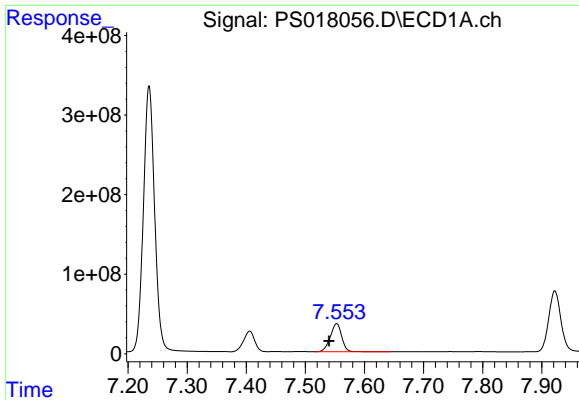
#6 MCPP

R.T.: 7.406 min
 Delta R.T.: 0.011 min
 Response: 331268526
 Conc: 70.95 ug/ml



#6 MCPP

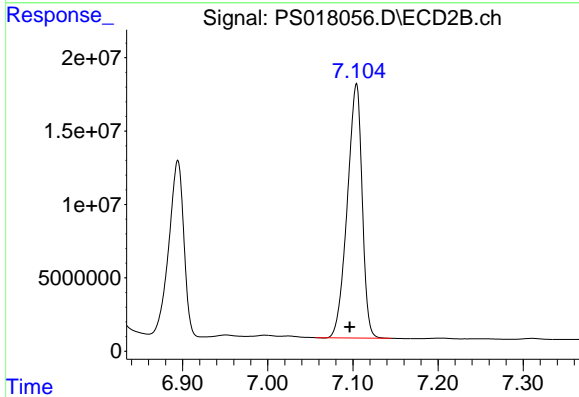
R.T.: 6.894 min
 Delta R.T.: 0.006 min
 Response: 149286483
 Conc: 69.41 ug/ml



#7 MCPA

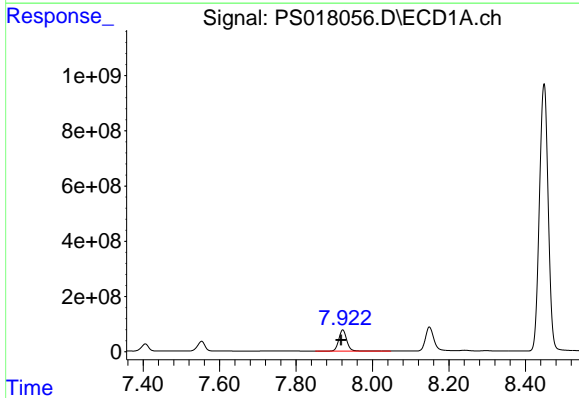
R.T.: 7.553 min
 Delta R.T.: 0.013 min
 Response: 473711754
 Conc: 71.00 ug/ml

Instrument :
 ECD_S
 ClientSampleId :
 HSTDCCC750



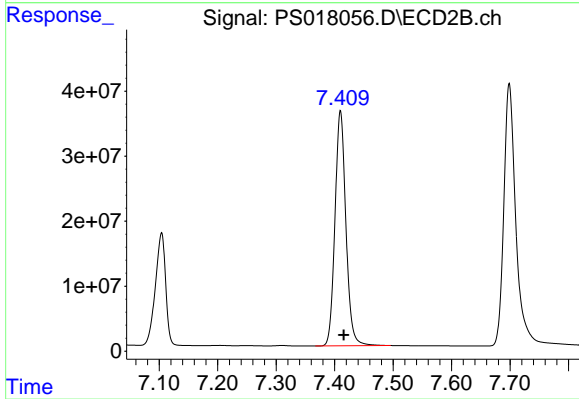
#7 MCPA

R.T.: 7.104 min
 Delta R.T.: 0.008 min
 Response: 210001004
 Conc: 70.38 ug/ml



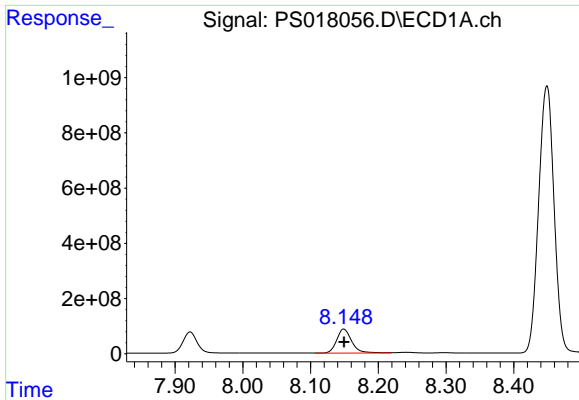
#8 DICHLORPROP

R.T.: 7.922 min
 Delta R.T.: 0.004 min
 Response: 1102569176
 Conc: 700.91 ng/ml



#8 DICHLORPROP

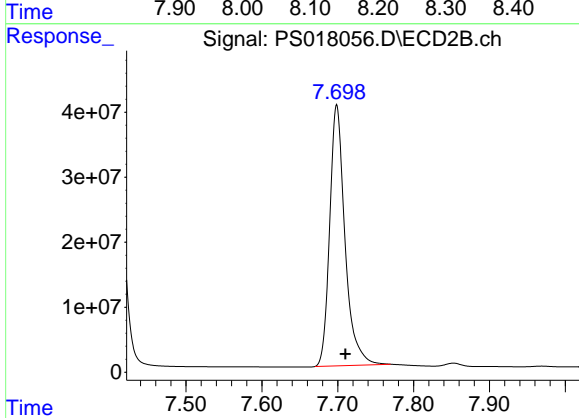
R.T.: 7.410 min
 Delta R.T.: -0.005 min
 Response: 469588918
 Conc: 703.58 ng/ml



#9 2,4-D

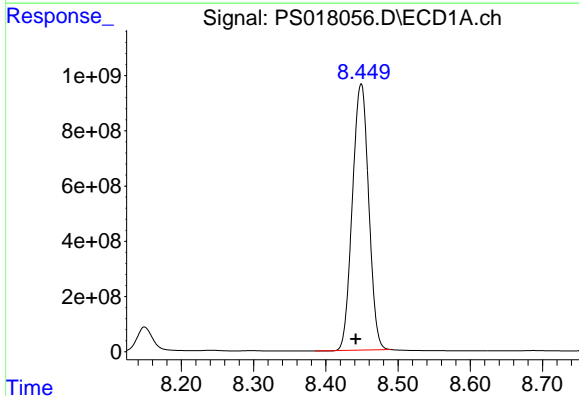
R.T.: 8.149 min
 Delta R.T.: 0.000 min
 Response: 1345543728
 Conc: 738.93 ng/ml

Instrument :
 ECD_S
 ClientSampleId :
 HSTDCCC750



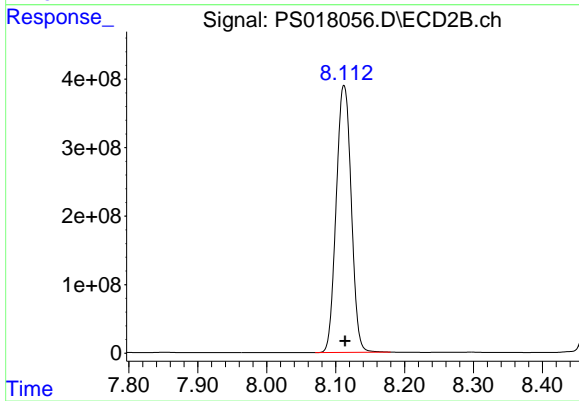
#9 2,4-D

R.T.: 7.699 min
 Delta R.T.: -0.012 min
 Response: 561478422
 Conc: 762.93 ng/ml



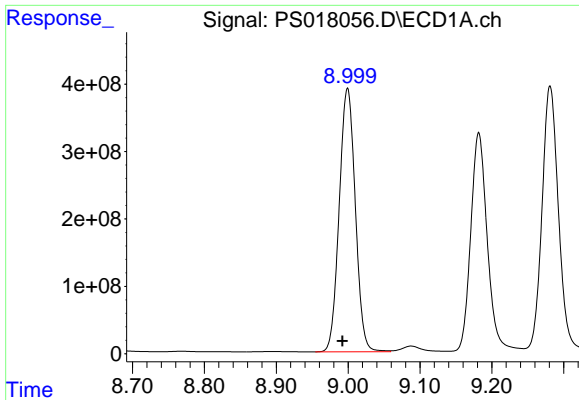
#10 Pentachlorophenol

R.T.: 8.449 min
 Delta R.T.: 0.008 min
 Response: 15131798984
 Conc: 716.26 ng/ml



#10 Pentachlorophenol

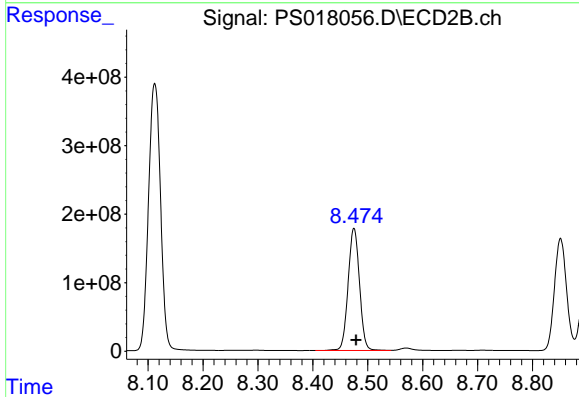
R.T.: 8.112 min
 Delta R.T.: -0.002 min
 Response: 5905619150
 Conc: 701.18 ng/ml



#11 2,4,5-TP (SILVEX)

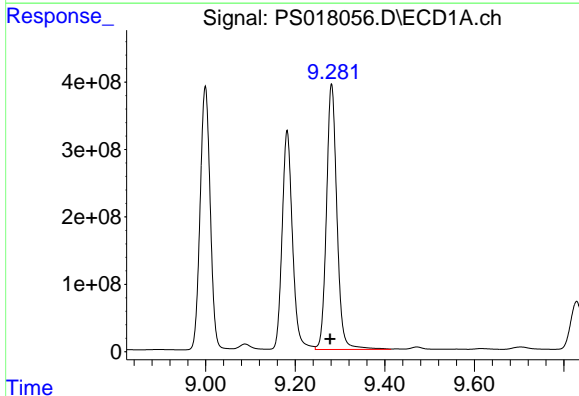
R.T.: 8.999 min
 Delta R.T.: 0.007 min
 Response: 6086094341
 Conc: 719.21 ng/ml

Instrument :
 ECD_S
 ClientSampleId :
 HSTDCCC750



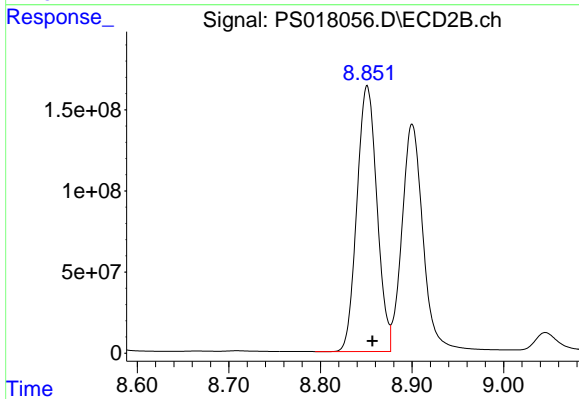
#11 2,4,5-TP (SILVEX)

R.T.: 8.475 min
 Delta R.T.: -0.004 min
 Response: 2569599738
 Conc: 720.85 ng/ml



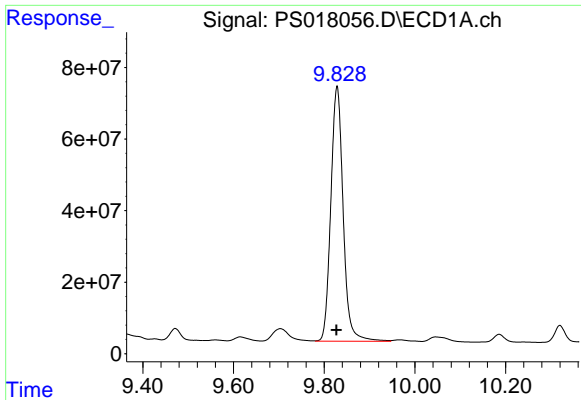
#12 2,4,5-T

R.T.: 9.281 min
 Delta R.T.: 0.003 min
 Response: 6382510431
 Conc: 720.04 ng/ml



#12 2,4,5-T

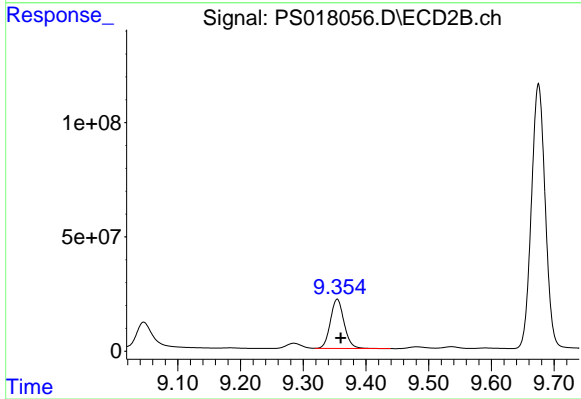
R.T.: 8.851 min
 Delta R.T.: -0.006 min
 Response: 2487049648
 Conc: 760.33 ng/ml



#13 2,4-DB

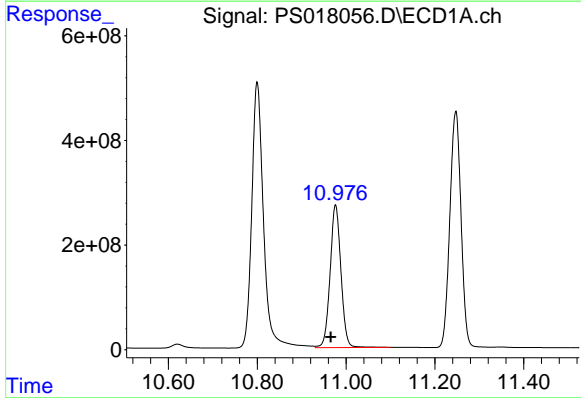
R.T.: 9.829 min
 Delta R.T.: 0.001 min
 Response: 1345024892
 Conc: 813.67 ng/ml

Instrument :
 ECD_S
 ClientSampleId :
 HSTDCCC750



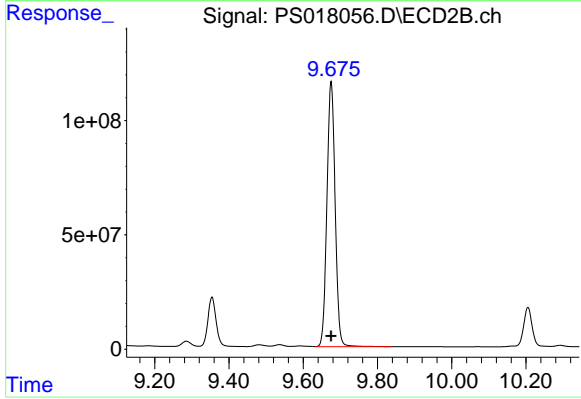
#13 2,4-DB

R.T.: 9.354 min
 Delta R.T.: -0.006 min
 Response: 328853376
 Conc: 743.24 ng/ml



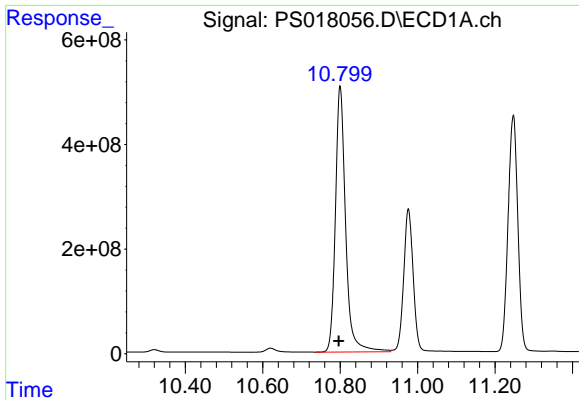
#14 DINOSEB

R.T.: 10.976 min
 Delta R.T.: 0.011 min
 Response: 4613255753
 Conc: 702.50 ng/ml



#14 DINOSEB

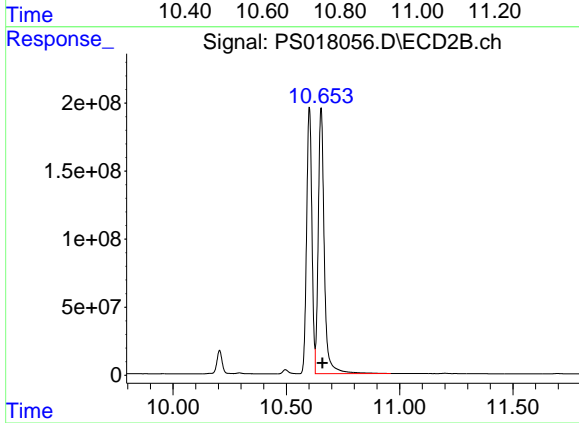
R.T.: 9.675 min
 Delta R.T.: 0.000 min
 Response: 1778517563
 Conc: 712.83 ng/ml



#15 Picloram

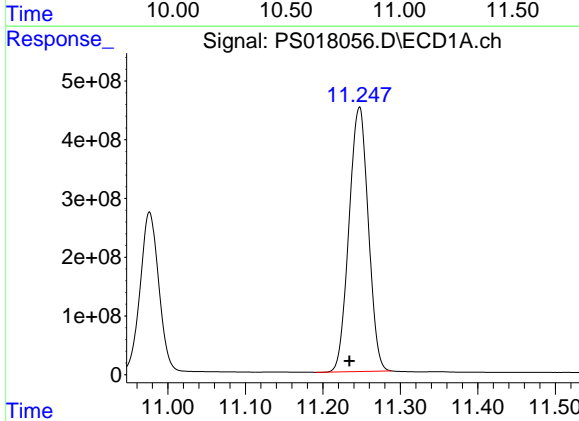
R.T.: 10.800 min
Delta R.T.: 0.004 min
Response: 9333356394
Conc: 781.96 ng/ml

Instrument :
ECD_S
ClientSampleId :
HSTDCCC750



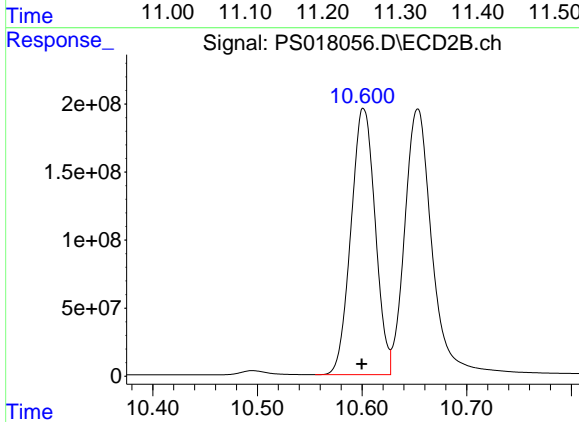
#15 Picloram

R.T.: 10.653 min
Delta R.T.: -0.006 min
Response: 3620988326
Conc: 774.35 ng/ml



#16 DCPA

R.T.: 11.247 min
Delta R.T.: 0.013 min
Response: 7788228938
Conc: 720.81 ng/ml



#16 DCPA

R.T.: 10.601 min
Delta R.T.: 0.002 min
Response: 3148909065
Conc: 713.15 ng/ml