

Data Path : Z:\pestpcbsrv\HPCHEM1\ECD_S\Data\PS011824\
 Data File : PS025574.D
 Signal(s) : Signal #1: ECD1A.ch Signal #2: ECD2B.ch
 Acq On : 18 Jan 2024 09:55
 Operator : AR\AJ
 Sample : I,BLK
 Misc :
 ALS Vial : 2 Sample Multiplier: 1

Instrument :
 ECD_S
 ClientSampleId :

Integration File signal 1: autoint1.e
 Integration File signal 2: autoint2.e
 Quant Time: Jan 19 00:09:29 2024
 Quant Method : Z:\pestpcbsrv\HPCHEM1\ECD_S\Method\PS011124.M
 Quant Title : 8080.M
 QLast Update : Thu Jan 11 16:45:24 2024
 Response via : Initial Calibration
 Integrator: ChemStation

Volume Inj. : 2 µl
 Signal #1 Phase : Rtx-CLPesticides Signal #2 Phase: Rtx-CLPesticides2
 Signal #1 Info : 30M x 0.32mm x0.5 Signal #2 Info : 30M x 0.32mm x 0.25µm

Compound	RT#1	RT#2	Resp#1	Resp#2	ng/ml	ng/ml

System Monitoring Compounds						
4) S 2,4-DCAA	6.352	6.760	727.0E6	384.7E6	488.069	501.097
Target Compounds						
1) T Dalapon	0.000	2.558	0	2975467	N.D.	2.533
2) T 3,5-DICHL...	5.693	0.000	1700369	0	<MDL	N.D. #
3) T 4-Nitroph...	6.189	6.368	8056312	1803809	8.915	3.789 #
5) T DICAMBA	0.000	6.956	0	2875861	N.D.	<MDL
6) T MCPP	0.000	6.956f	0	2875861	N.D.	1.240
7) T MCPA	6.717f	7.236	2089476	2462588	<MDL	<MDL #
8) T DICHLORPROP	0.000	7.561	0	7813151	N.D.	9.038
9) T 2,4-D	7.250	7.769f	16224231	-194481	8.811	N.D. #
13) T 2,4-DB	0.000	9.476	0	602283	N.D.	1.154
15) T Picloram	9.660	10.777	17932491	5632262	1.733	1.059 #
16) T DCPA	0.000	10.723	0	2740605	N.D.	<MDL

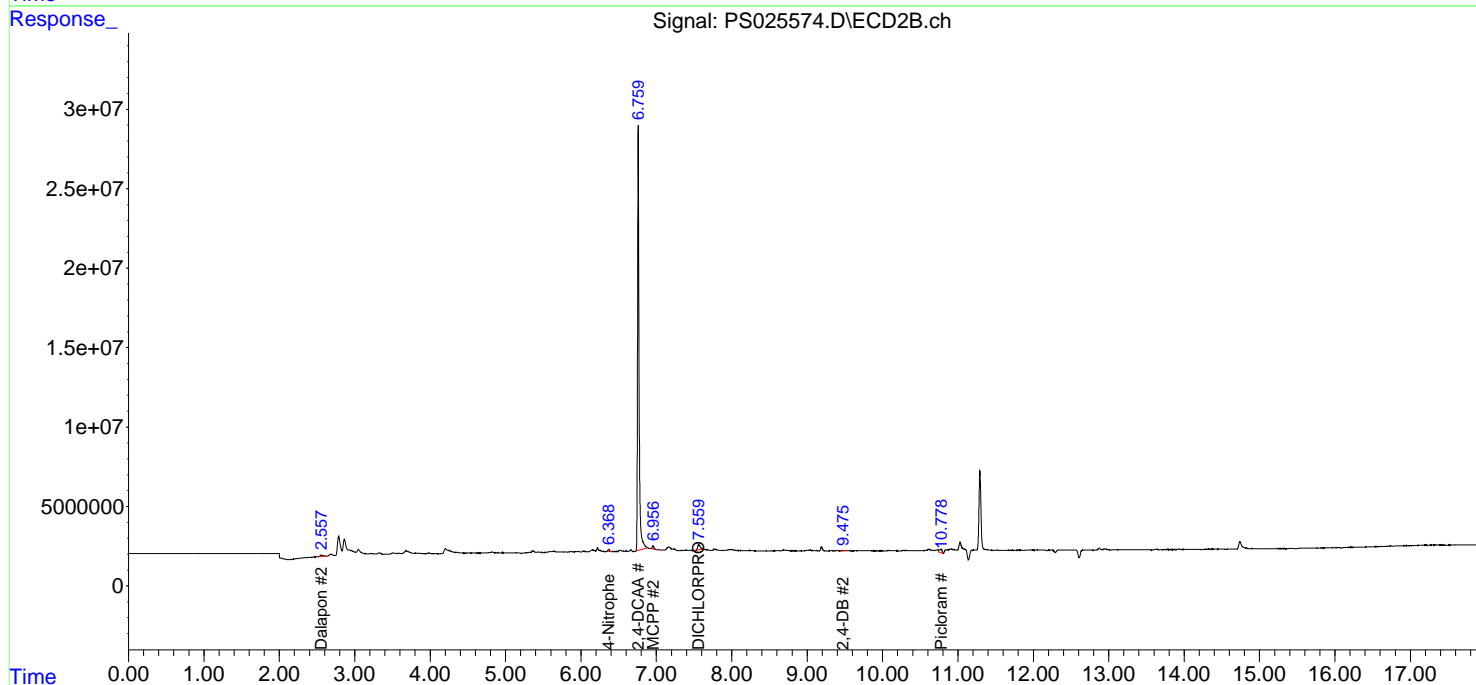
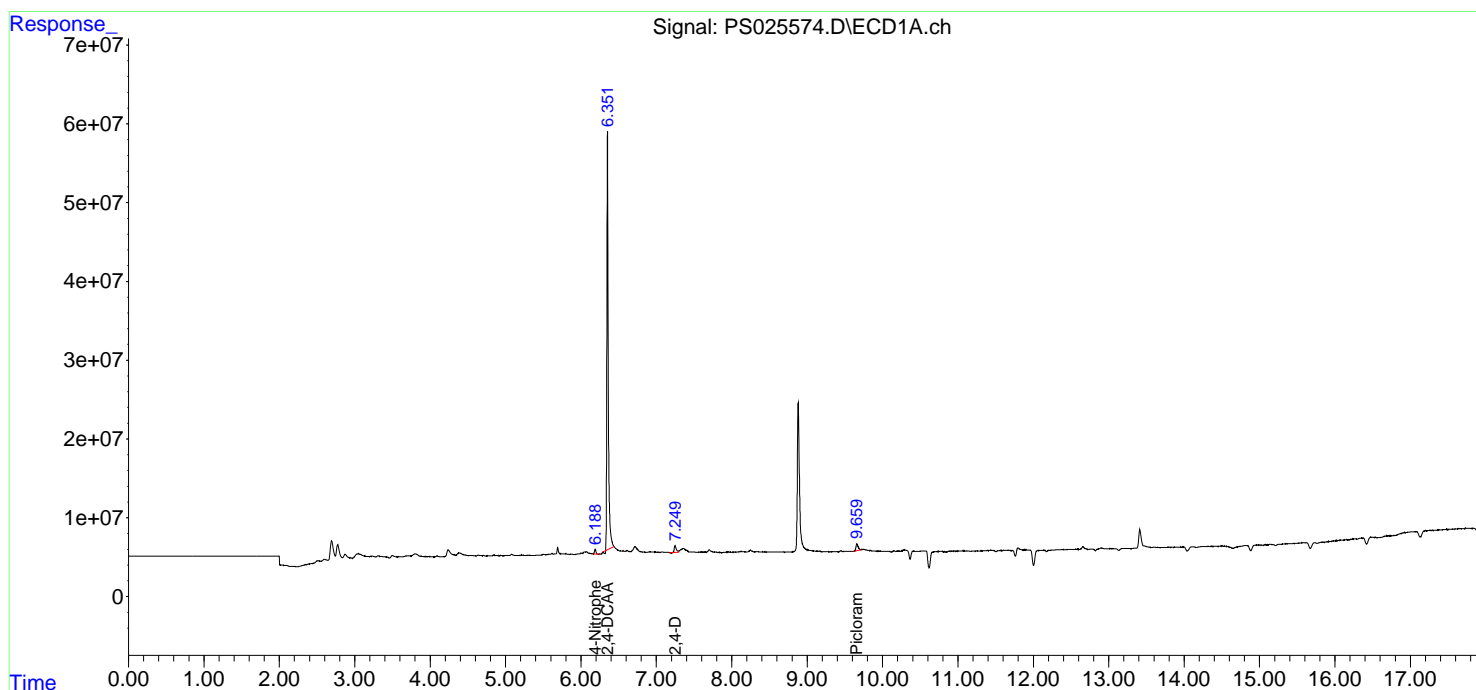
(f)=RT Delta > 1/2 Window (#)=Amounts differ by > 25% (m)=manual int.

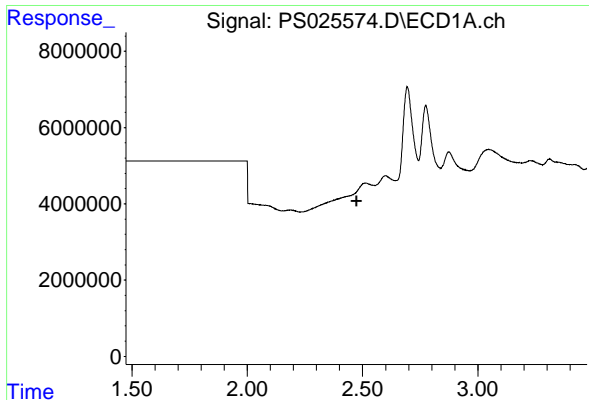
Data Path : Z:\pestpcbsrv\HPCHEM1\ECD_S\Data\PS011824\
 Data File : PS025574.D
 Signal(s) : Signal #1: ECD1A.ch Signal #2: ECD2B.ch
 Acq On : 18 Jan 2024 09:55
 Operator : AR\AJ
 Sample : I,BLK
 Misc :
 ALS Vial : 2 Sample Multiplier: 1

Instrument :
 ECD_S
 ClientSampleId :

Integration File signal 1: autoint1.e
 Integration File signal 2: autoint2.e
 Quant Time: Jan 19 00:09:29 2024
 Quant Method : Z:\pestpcbsrv\HPCHEM1\ECD_S\Method\PS011124.M
 Quant Title : 8080.M
 QLast Update : Thu Jan 11 16:45:24 2024
 Response via : Initial Calibration
 Integrator: ChemStation

Volume Inj. : 2 µl
 Signal #1 Phase : Rtx-CLPesticides Signal #2 Phase: Rtx-CLPesticides2
 Signal #1 Info : 30M x 0.32mm x0.5 Signal #2 Info : 30M x 0.32mm x 0.25µm

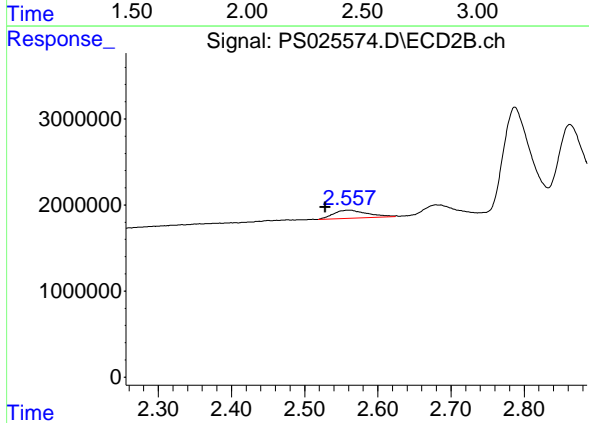




#1 Dalapon

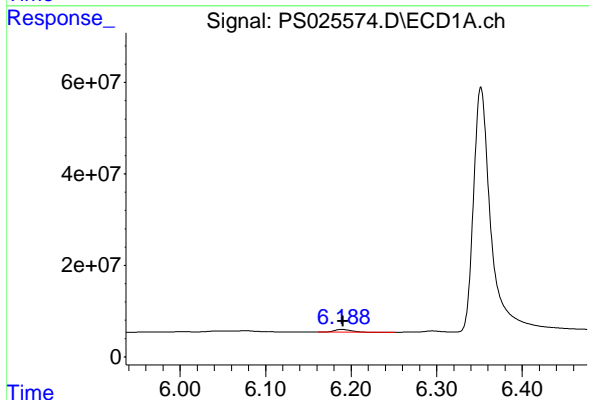
R.T.: 0.000 min
 Exp R.T.: 2.474 min
 Response: 0
 Conc: N.D.

Instrument :
 ECD_S
 ClientSampleId :



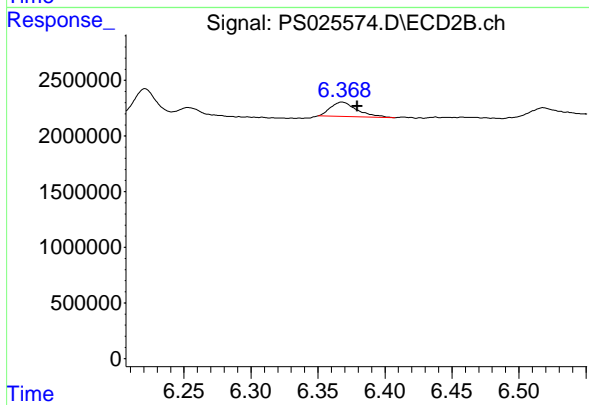
#1 Dalapon

R.T.: 2.558 min
 Delta R.T.: 0.029 min
 Response: 2975467
 Conc: 2.53 ng/ml



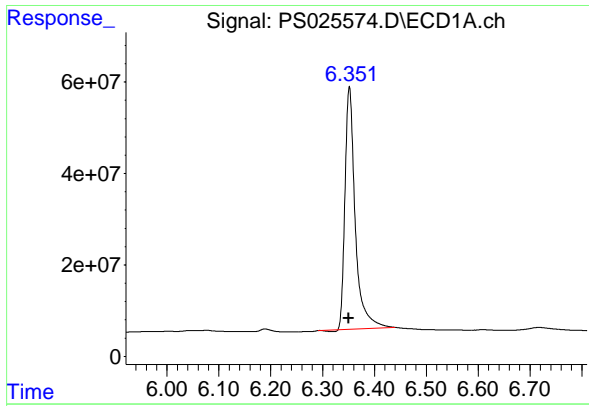
#3 4-Nitrophenol

R.T.: 6.189 min
 Delta R.T.: -0.001 min
 Response: 8056312
 Conc: 8.92 ng/ml



#3 4-Nitrophenol

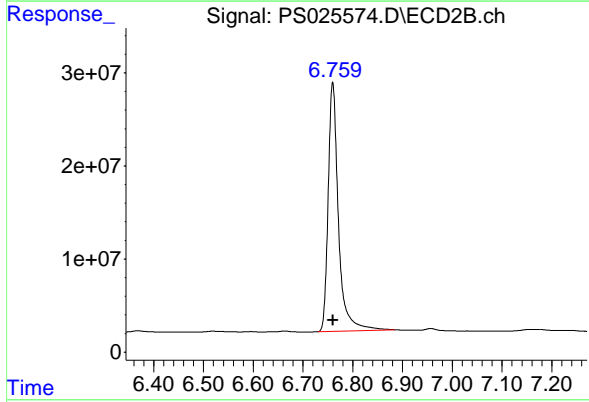
R.T.: 6.368 min
 Delta R.T.: -0.011 min
 Response: 1803809
 Conc: 3.79 ng/ml



#4 2,4-DCAA

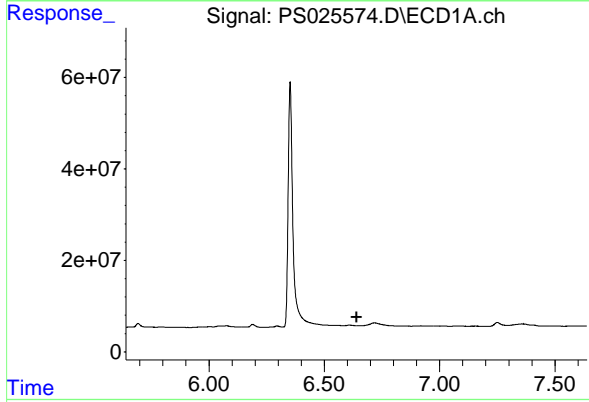
R.T.: 6.352 min
 Delta R.T.: 0.002 min
 Response: 726961610
 Conc: 488.07 ng/ml

Instrument :
 ECD_S
 ClientSampleId :



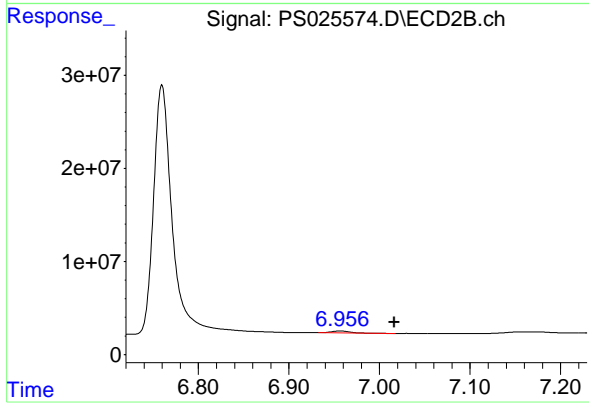
#4 2,4-DCAA

R.T.: 6.760 min
 Delta R.T.: 0.000 min
 Response: 384742517
 Conc: 501.10 ng/ml



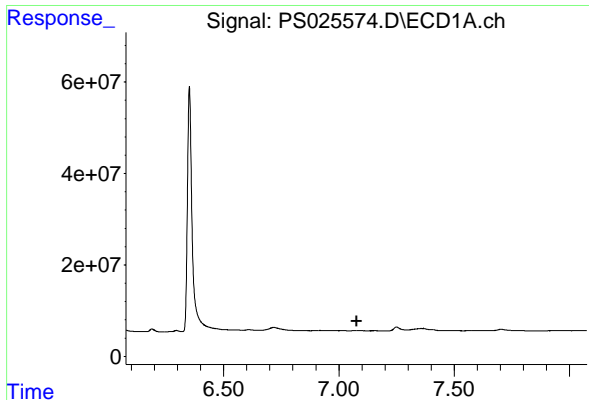
#6 MCPP

R.T.: 0.000 min
 Exp R.T. : 6.640 min
 Response: 0
 Conc: N.D.



#6 MCPP

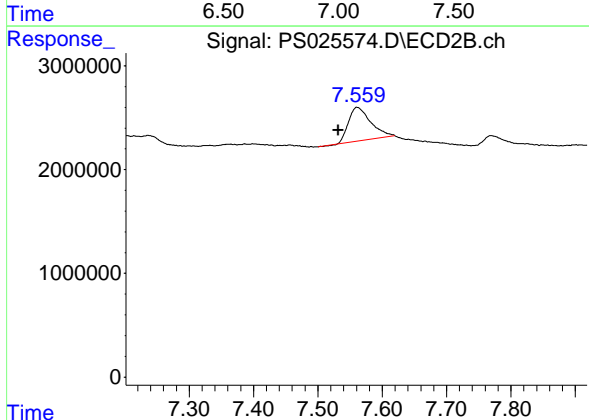
R.T.: 6.956 min
 Delta R.T.: -0.060 min
 Response: 2875861
 Conc: 1.24 ug/ml



#8 DICHLORPROP

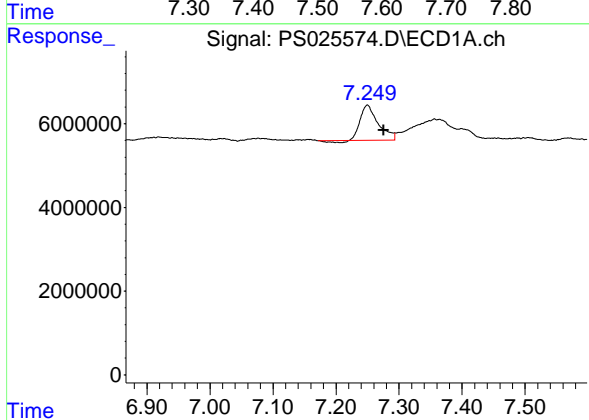
R.T.: 0.000 min
 Exp R.T.: 7.077 min
 Response: 0
 Conc: N.D.

Instrument :
 ECD_S
 ClientSampleId :



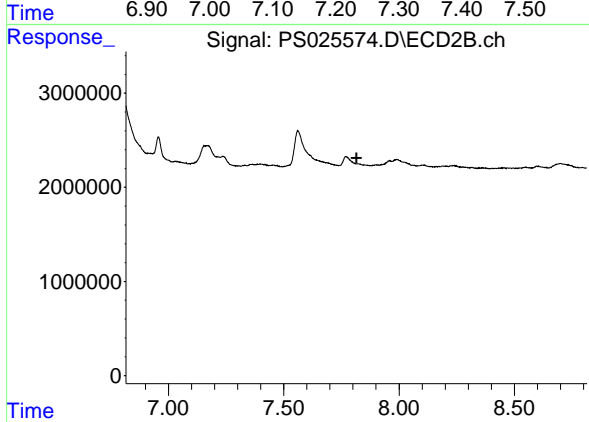
#8 DICHLORPROP

R.T.: 7.561 min
 Delta R.T.: 0.029 min
 Response: 7813151
 Conc: 9.04 ng/ml



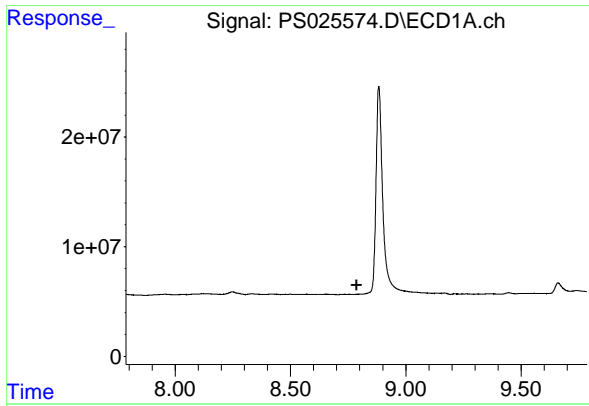
#9 2,4-D

R.T.: 7.250 min
 Delta R.T.: -0.026 min
 Response: 16224231
 Conc: 8.81 ng/ml



#9 2,4-D

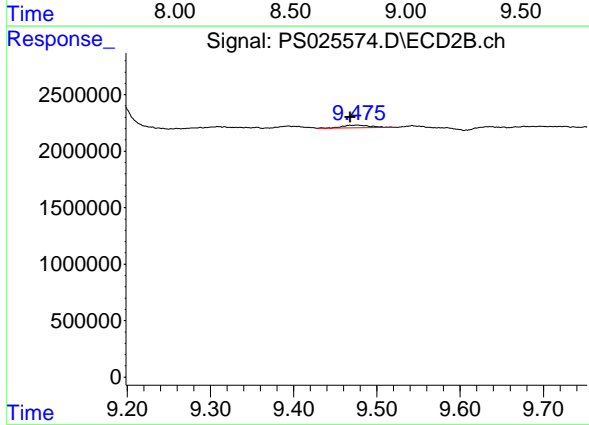
R.T.: 7.769 min
 Delta R.T.: -0.046 min
 Response: -194481
 Conc: N.D.



#13 2,4-DB

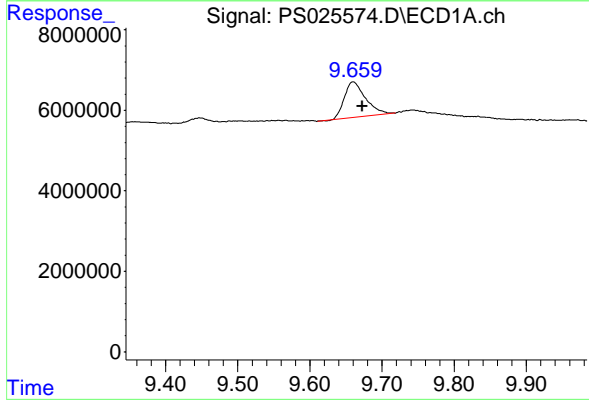
R.T.: 0.000 min
 Exp R.T.: 8.786 min
 Response: 0
 Conc: N.D.

Instrument :
 ECD_S
 ClientSampleId :



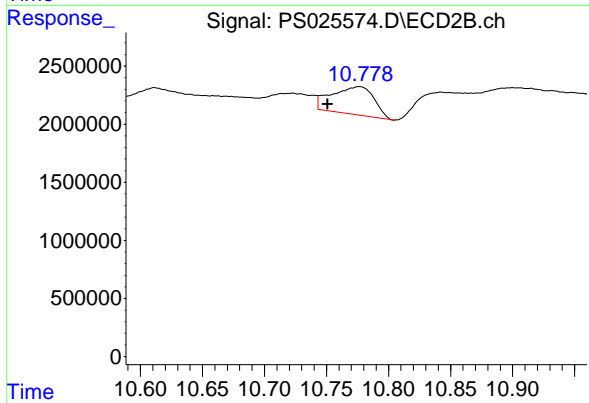
#13 2,4-DB

R.T.: 9.476 min
 Delta R.T.: 0.008 min
 Response: 602283
 Conc: 1.15 ng/ml



#15 Picloram

R.T.: 9.660 min
 Delta R.T.: -0.012 min
 Response: 17932491
 Conc: 1.73 ng/ml



#15 Picloram

R.T.: 10.777 min
 Delta R.T.: 0.026 min
 Response: 5632262
 Conc: 1.06 ng/ml