

Data Path : Z:\pestpcbsrv\HPCHEM1\ECD\_S\Data\PS011824\  
 Data File : PS025584.D  
 Signal(s) : Signal #1: ECD1A.ch Signal #2: ECD2B.ch  
 Acq On : 18 Jan 2024 20:52  
 Operator : AR\AJ  
 Sample : HSTDCCC750  
 Misc :  
 ALS Vial : 3 Sample Multiplier: 1

**Instrument :**  
 ECD\_S  
**ClientSampleId :**  
 HSTDCCC750

**Manual Integrations**  
**APPROVED**  
 Reviewed By :Abdul Mirza 01/19/2024  
 Supervised By :Ankita Jodhani 01/19/2024

Integration File signal 1: autoint1.e  
 Integration File signal 2: autoint2.e  
 Quant Time: Jan 19 00:11:58 2024  
 Quant Method : Z:\pestpcbsrv\HPCHEM1\ECD\_S\Method\PS011124.M  
 Quant Title : 8080.M  
 QLast Update : Thu Jan 11 16:45:24 2024  
 Response via : Initial Calibration  
 Integrator: ChemStation

Volume Inj. : 2 µl  
 Signal #1 Phase : Rtx-CLPesticides Signal #2 Phase: Rtx-CLPesticides2  
 Signal #1 Info : 30M x 0.32mm x0.5 Signal #2 Info : 30M x 0.32mm x 0.25µm

Compound	RT#1	RT#2	Resp#1	Resp#2	ng/ml	ng/ml
-----						
System Monitoring Compounds						
4) S 2,4-DCAA	6.349	6.758	1042.8E6	558.0E6	700.142m	726.765
Target Compounds						
1) T Dalapon	2.470	2.524	1494.5E6	739.5E6	645.816	629.489
2) T 3,5-DICHL...	5.725	5.951	1520.7E6	783.7E6	664.520	673.161
3) T 4-Nitroph...	6.189	6.378	624.4E6	322.7E6	690.930	677.818
5) T DICAMBA	6.489	6.917	4401.9E6	2306.7E6	689.814	693.142
6) T MCPP	6.639	7.014	288.8E6	163.4E6	72.120	70.450
7) T MCPA	6.761	7.219	403.1E6	241.8E6	71.238	69.780
8) T DICHLORPROP	7.075	7.529	1129.8E6	590.4E6	685.596	682.966
9) T 2,4-D	7.274	7.812	1233.5E6	639.1E6	669.915	703.545
10) T Pentachlo...	7.500	8.233	16863.4E6	8707.7E6	704.675	707.944
11) T 2,4,5-TP ...	8.022	8.592	6556.8E6	3367.6E6	705.493	713.356
12) T 2,4,5-T	8.278	8.962	6617.4E6	3228.8E6	677.758m	738.742
13) T 2,4-DB	8.785	9.465	794.9E6	385.1E6	738.445	737.724
14) T DINOSEB	9.831	9.791	4872.8E6	2336.2E6	710.574	743.132
15) T Picloram	9.669	10.747	7891.7E6	3854.9E6	762.772	725.037
16) T DCPA	10.096	10.711	8714.7E6	4253.1E6	718.501	731.468
-----						

(f)=RT Delta > 1/2 Window (#)=Amounts differ by > 25% (m)=manual int.

Data Path : Z:\pestpcbsrv\HPCHEM1\ECD\_S\Data\PS011824\  
 Data File : PS025584.D  
 Signal(s) : Signal #1: ECD1A.ch Signal #2: ECD2B.ch  
 Acq On : 18 Jan 2024 20:52  
 Operator : AR\AJ  
 Sample : HSTDCCC750  
 Misc :  
 ALS Vial : 3 Sample Multiplier: 1

**Instrument :**

ECD\_S

**ClientSampleId :**

HSTDCCC750

**Manual Integrations**

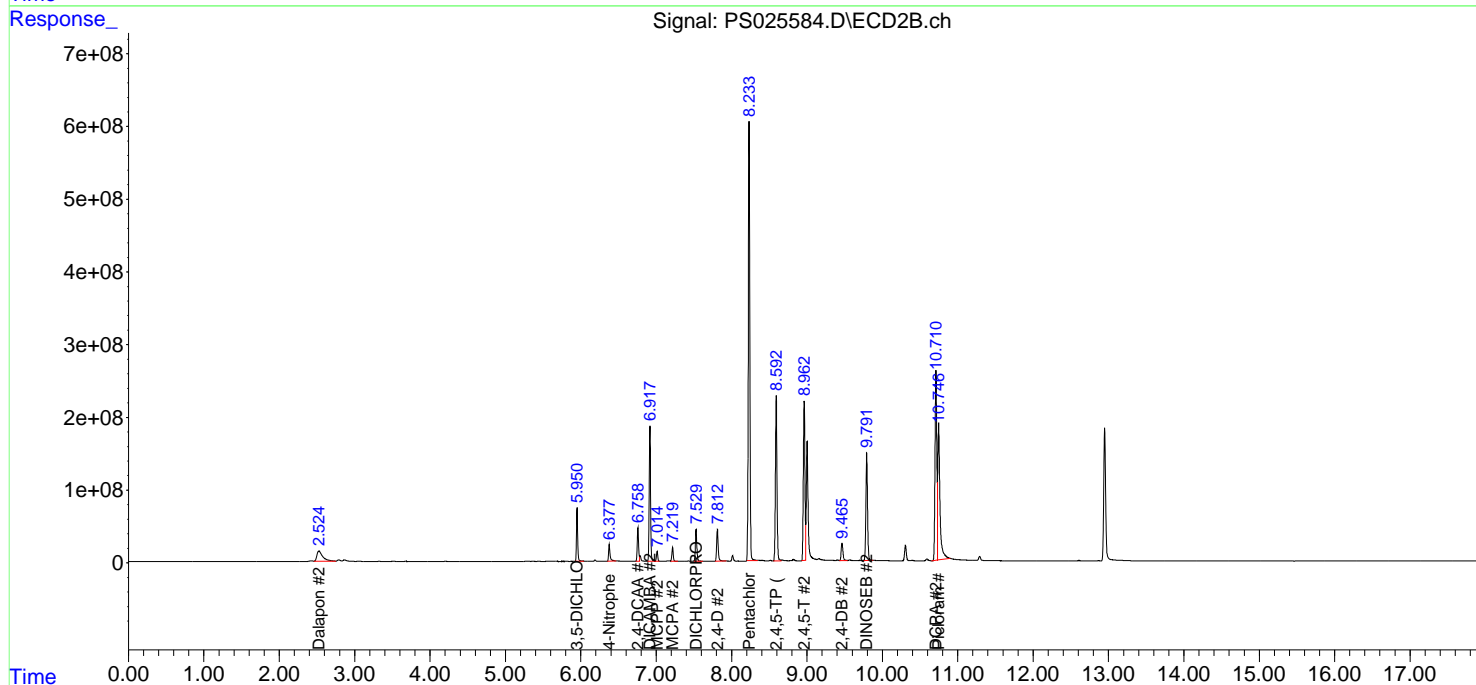
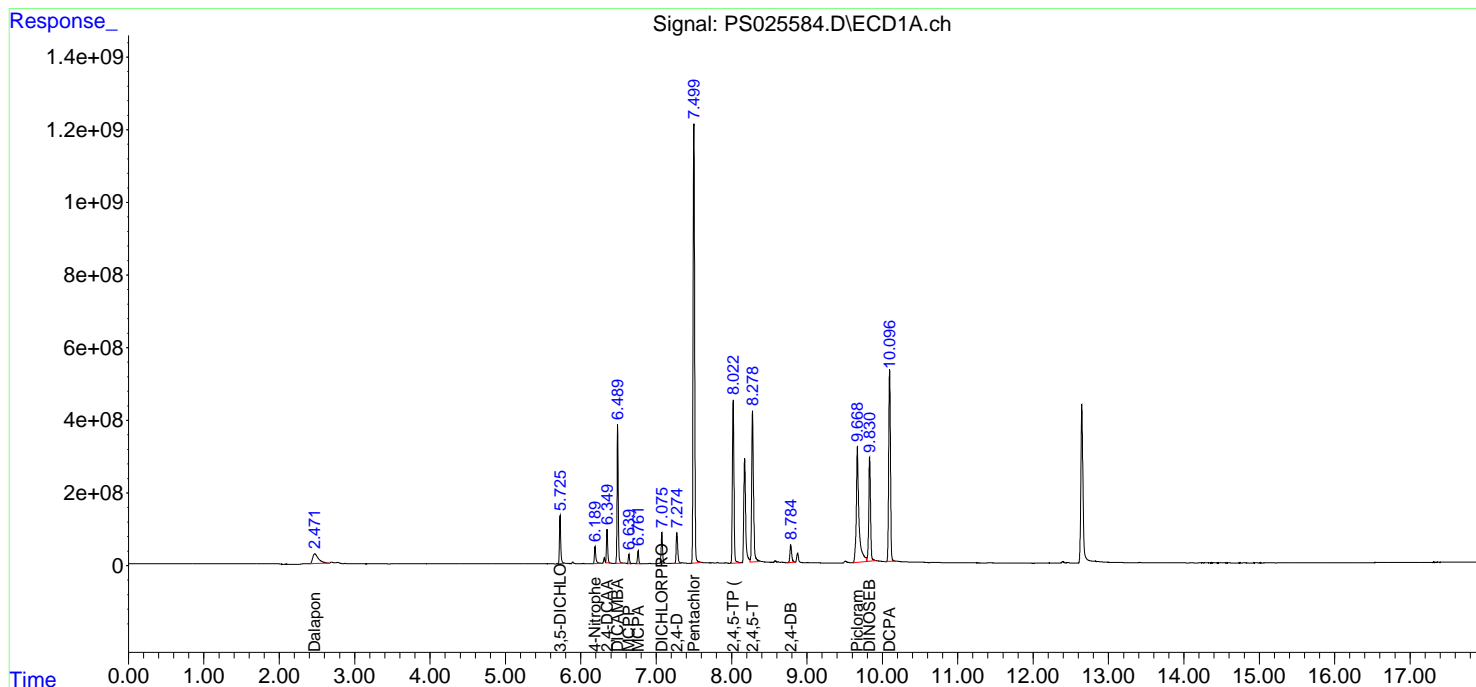
**APPROVED**

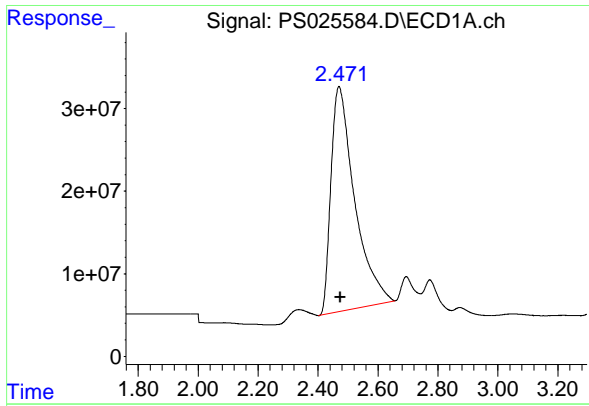
Reviewed By :Abdul Mirza 01/19/2024

Supervised By :Ankita Jodhani 01/19/2024

Integration File signal 1: autoint1.e  
 Integration File signal 2: autoint2.e  
 Quant Time: Jan 19 00:11:58 2024  
 Quant Method : Z:\pestpcbsrv\HPCHEM1\ECD\_S\Method\PS011124.M  
 Quant Title : 8080.M  
 QLast Update : Thu Jan 11 16:45:24 2024  
 Response via : Initial Calibration  
 Integrator: ChemStation

Volume Inj. : 2 µl  
 Signal #1 Phase : Rtx-CLPesticides Signal #2 Phase: Rtx-CLPesticides2  
 Signal #1 Info : 30M x 0.32mm x0.5 Signal #2 Info : 30M x 0.32mm x 0.25µm





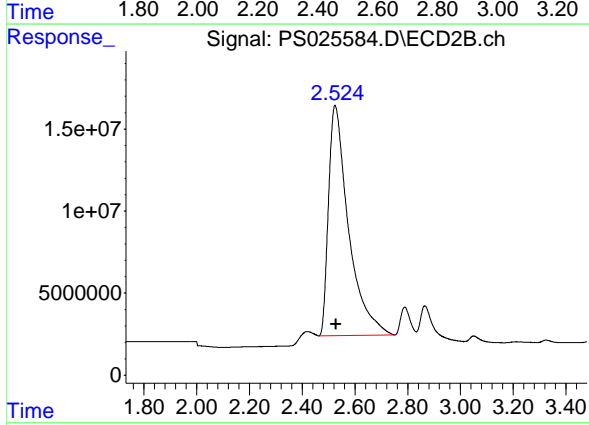
#1 Dalapon

R.T.: 2.470 min  
 Delta R.T.: -0.004 min  
 Response: 1494480933  
 Conc: 645.82 ng/ml

Instrument : ECD\_S  
 Client Sample Id : HSTDCCC750

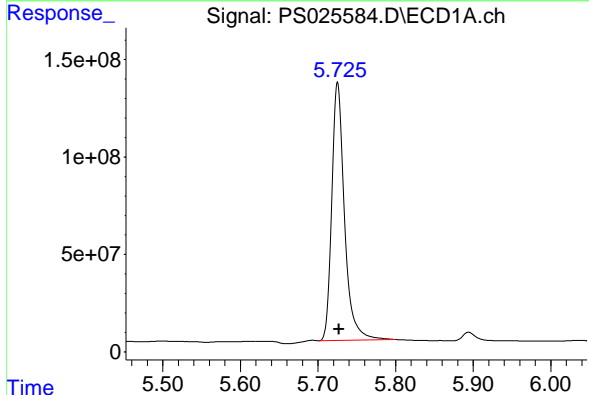
Manual Integrations  
 APPROVED

Reviewed By :Abdul Mirza 01/19/2024  
 Supervised By :Ankita Jodhani 01/19/2024



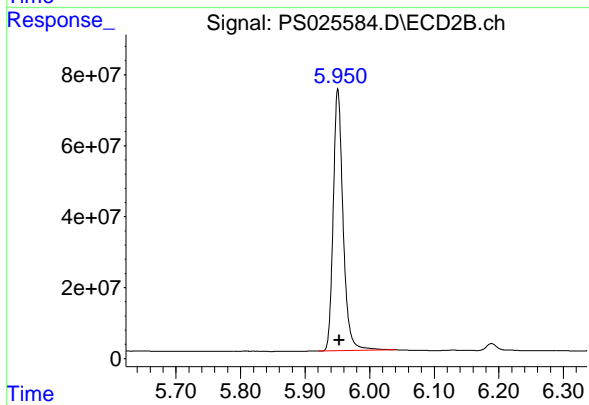
#1 Dalapon

R.T.: 2.524 min  
 Delta R.T.: -0.004 min  
 Response: 739538812  
 Conc: 629.49 ng/ml



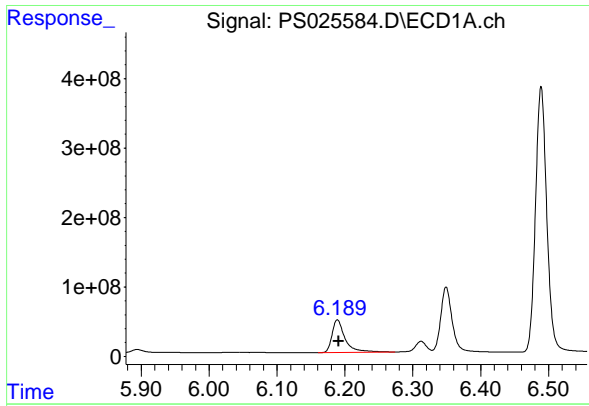
#2 3,5-DICHLOROBENZOIC ACID

R.T.: 5.725 min  
 Delta R.T.: -0.002 min  
 Response: 1520700932  
 Conc: 664.52 ng/ml



#2 3,5-DICHLOROBENZOIC ACID

R.T.: 5.951 min  
 Delta R.T.: -0.002 min  
 Response: 783731540  
 Conc: 673.16 ng/ml



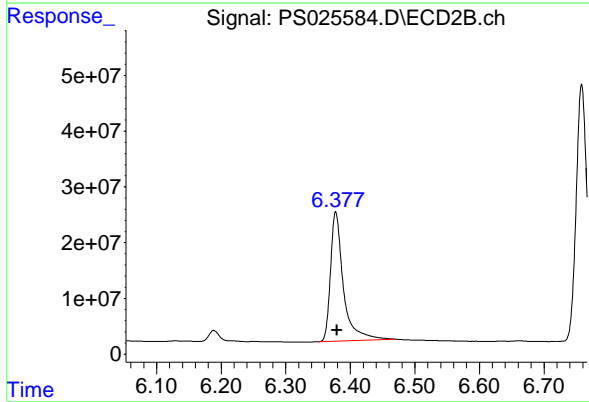
#3 4-Nitrophenol

R.T.: 6.189 min  
 Delta R.T.: -0.001 min  
 Response: 624361119  
 Conc: 690.93 ng/ml

Instrument :  
 ECD\_S  
 Client Sample Id :  
 HSTDCCC750

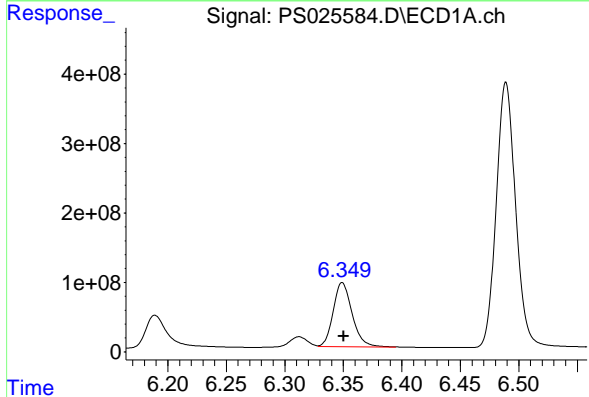
Manual Integrations  
 APPROVED

Reviewed By :Abdul Mirza 01/19/2024  
 Supervised By :Ankita Jodhani 01/19/2024



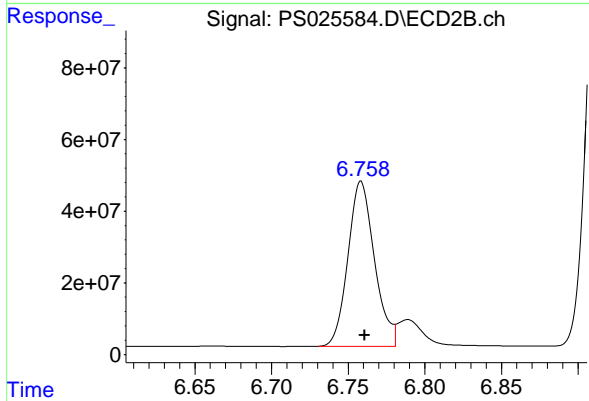
#3 4-Nitrophenol

R.T.: 6.378 min  
 Delta R.T.: -0.002 min  
 Response: 322704036  
 Conc: 677.82 ng/ml



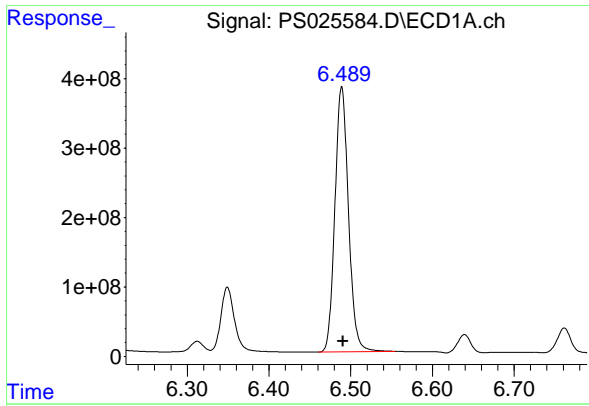
#4 2,4-DCAA

R.T.: 6.349 min  
 Delta R.T.: -0.002 min  
 Response: 1042835258  
 Conc: 700.14 ng/ml m



#4 2,4-DCAA

R.T.: 6.758 min  
 Delta R.T.: -0.002 min  
 Response: 558010588  
 Conc: 726.77 ng/ml



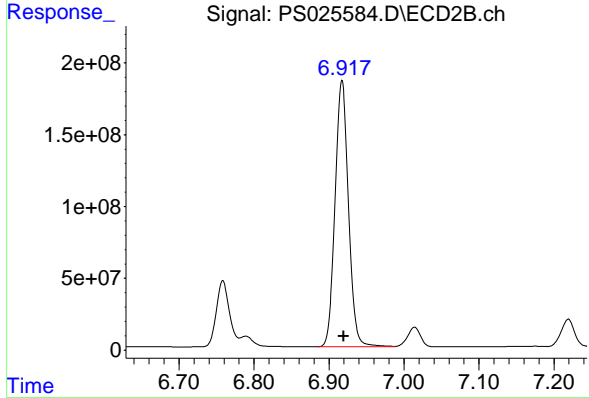
#5 DICAMBA

R.T.: 6.489 min  
 Delta R.T.: -0.001 min  
 Response: 4401906987  
 Conc: 689.81 ng/ml

Instrument :  
 ECD\_S  
 ClientSampleId :  
 HSTDCCC750

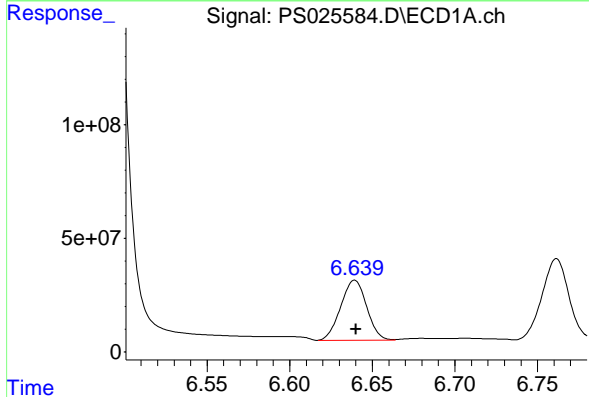
Manual Integrations  
 APPROVED

Reviewed By :Abdul Mirza 01/19/2024  
 Supervised By :Ankita Jodhani 01/19/2024



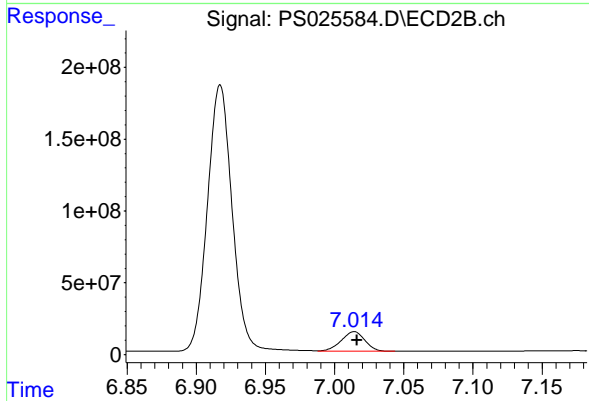
#5 DICAMBA

R.T.: 6.917 min  
 Delta R.T.: -0.002 min  
 Response: 2306721486  
 Conc: 693.14 ng/ml



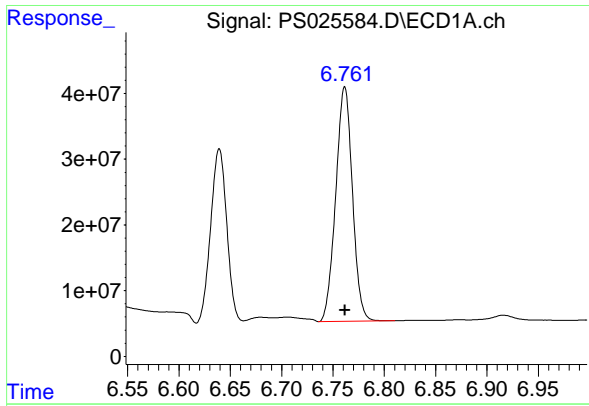
#6 MCPP

R.T.: 6.639 min  
 Delta R.T.: 0.000 min  
 Response: 288772385  
 Conc: 72.12 ug/ml



#6 MCPP

R.T.: 7.014 min  
 Delta R.T.: -0.002 min  
 Response: 163432401  
 Conc: 70.45 ug/ml

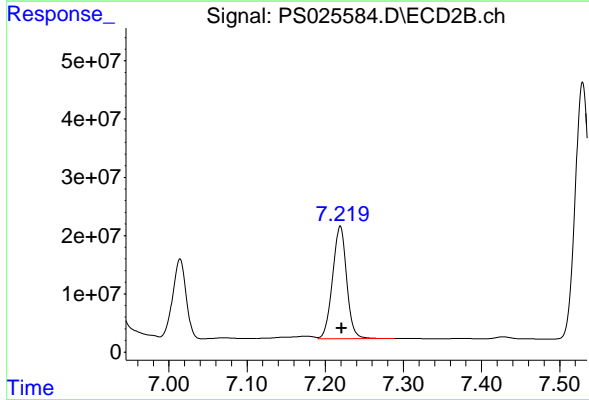


#7 MCPA  
 R.T.: 6.761 min  
 Delta R.T.: 0.000 min  
 Response: 403146851  
 Conc: 71.24 ug/ml

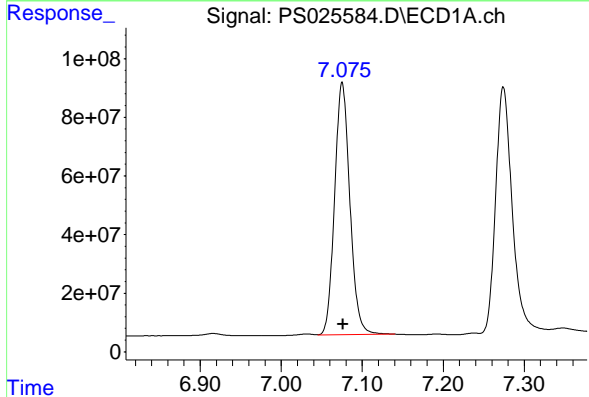
Instrument :  
 ECD\_S  
 Client Sample Id :  
 HSTDCCC750

Manual Integrations  
 APPROVED

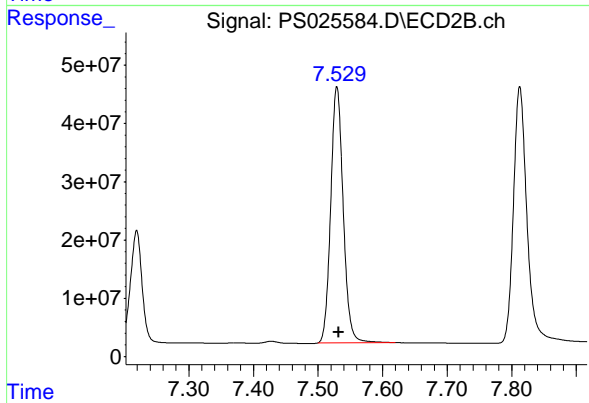
Reviewed By :Abdul Mirza 01/19/2024  
 Supervised By :Ankita Jodhani 01/19/2024



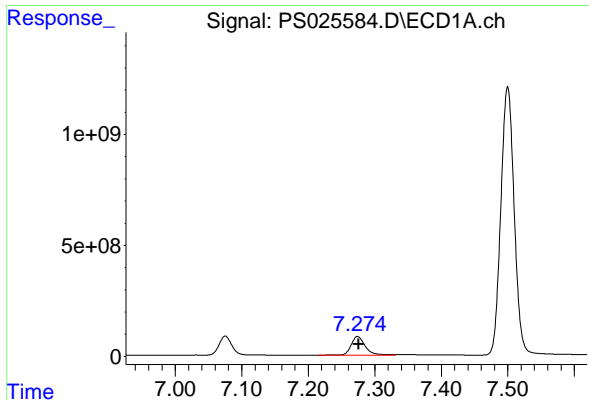
#7 MCPA  
 R.T.: 7.219 min  
 Delta R.T.: -0.002 min  
 Response: 241769800  
 Conc: 69.78 ug/ml



#8 DICHLORPROP  
 R.T.: 7.075 min  
 Delta R.T.: -0.001 min  
 Response: 1129811830  
 Conc: 685.60 ng/ml



#8 DICHLORPROP  
 R.T.: 7.529 min  
 Delta R.T.: -0.002 min  
 Response: 590391238  
 Conc: 682.97 ng/ml



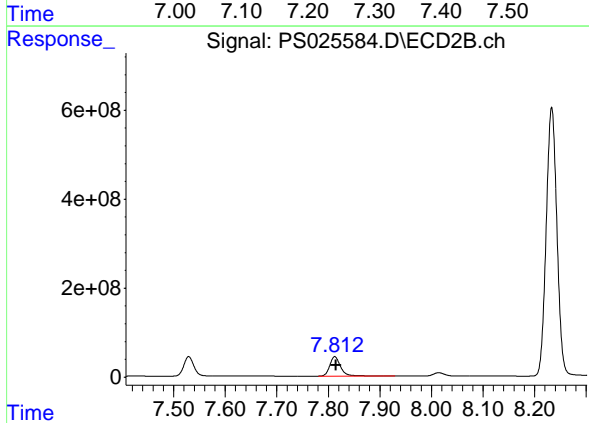
#9 2,4-D

R.T.: 7.274 min  
 Delta R.T.: -0.001 min  
 Response: 1233548444  
 Conc: 669.91 ng/ml

Instrument : ECD\_S  
 ClientSampleId : HSTDCCC750

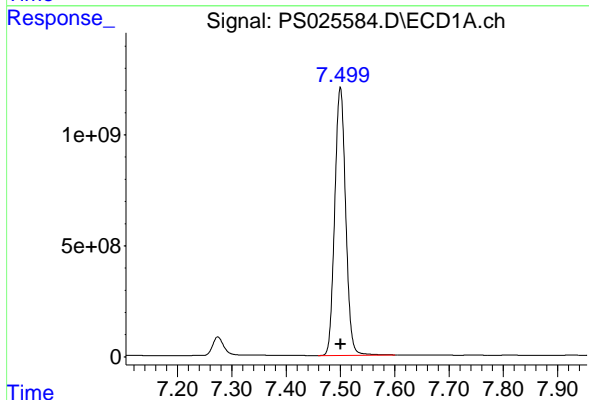
Manual Integrations  
 APPROVED

Reviewed By :Abdul Mirza 01/19/2024  
 Supervised By :Ankita Jodhani 01/19/2024



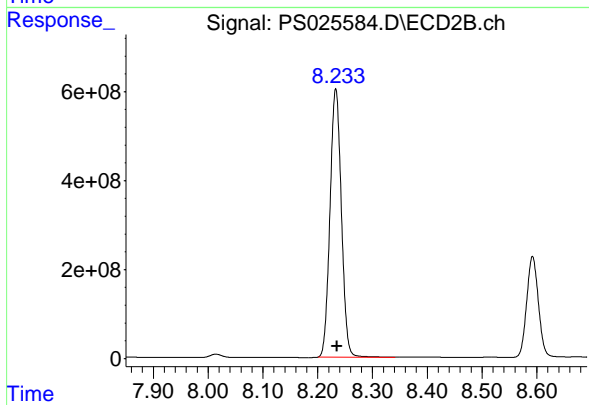
#9 2,4-D

R.T.: 7.812 min  
 Delta R.T.: -0.003 min  
 Response: 639132620  
 Conc: 703.54 ng/ml



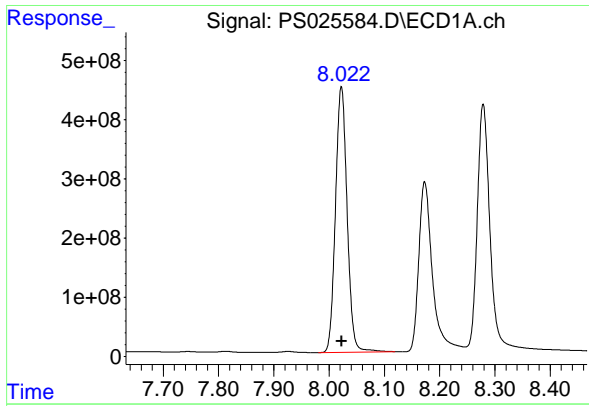
#10 Pentachlorophenol

R.T.: 7.500 min  
 Delta R.T.: -0.001 min  
 Response: 16863358925  
 Conc: 704.67 ng/ml



#10 Pentachlorophenol

R.T.: 8.233 min  
 Delta R.T.: -0.002 min  
 Response: 8707668696  
 Conc: 707.94 ng/ml

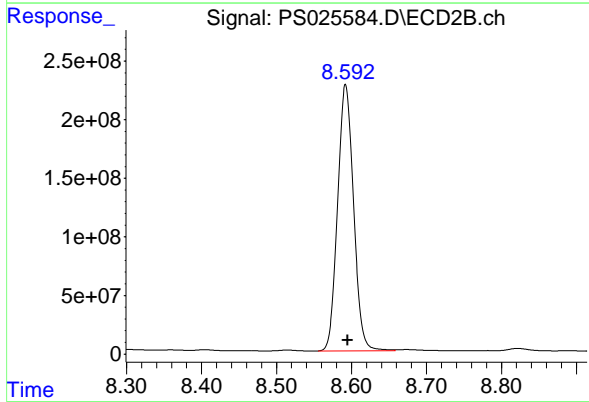


#11 2,4,5-TP (SILVEX)  
 R.T.: 8.022 min  
 Delta R.T.: 0.000 min  
 Response: 6556768475  
 Conc: 705.49 ng/ml

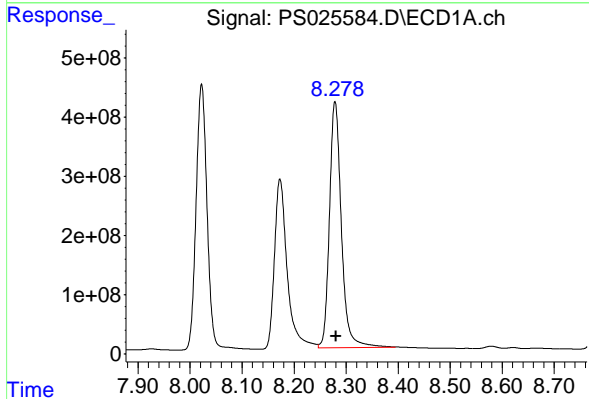
Instrument :  
 ECD\_S  
 ClientSampleId :  
 HSTDCCC750

Manual Integrations  
 APPROVED

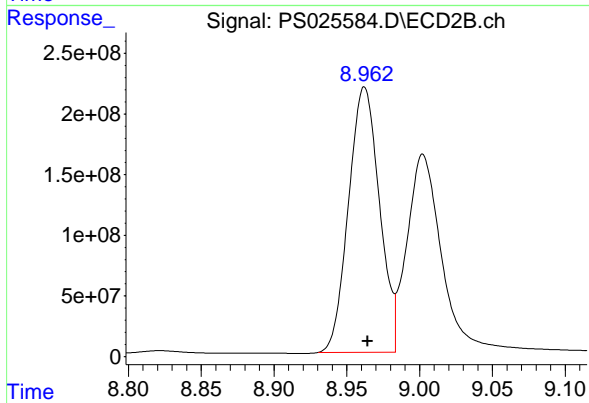
Reviewed By :Abdul Mirza 01/19/2024  
 Supervised By :Ankita Jodhani 01/19/2024



#11 2,4,5-TP (SILVEX)  
 R.T.: 8.592 min  
 Delta R.T.: -0.002 min  
 Response: 3367554462  
 Conc: 713.36 ng/ml

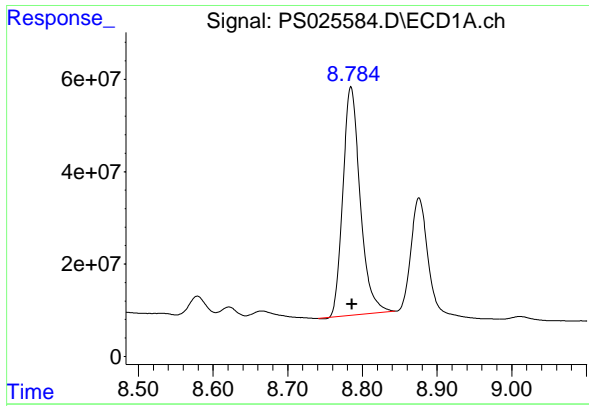


#12 2,4,5-T  
 R.T.: 8.278 min  
 Delta R.T.: -0.002 min  
 Response: 6617402113  
 Conc: 677.76 ng/ml m



#12 2,4,5-T  
 R.T.: 8.962 min  
 Delta R.T.: -0.002 min  
 Response: 3228820738  
 Conc: 738.74 ng/ml





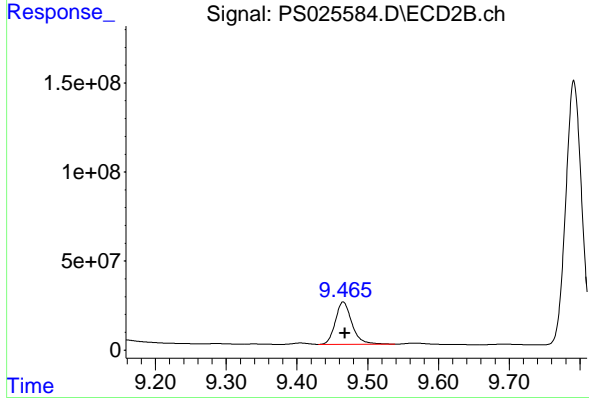
#13 2,4-DB

R.T.: 8.785 min  
 Delta R.T.: -0.001 min  
 Response: 794882312  
 Conc: 738.45 ng/ml

Instrument :  
 ECD\_S  
 ClientSampleId :  
 HSTDCCC750

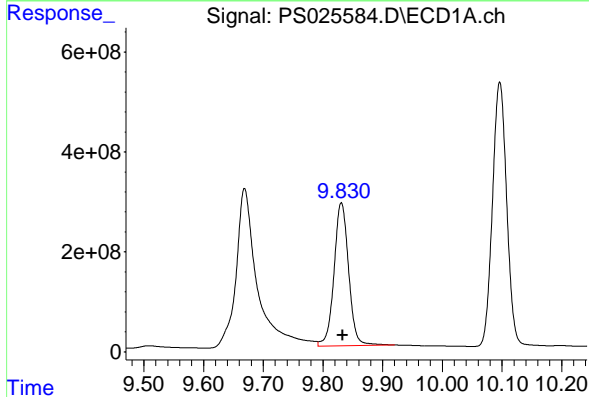
Manual Integrations  
 APPROVED

Reviewed By :Abdul Mirza 01/19/2024  
 Supervised By :Ankita Jodhani 01/19/2024



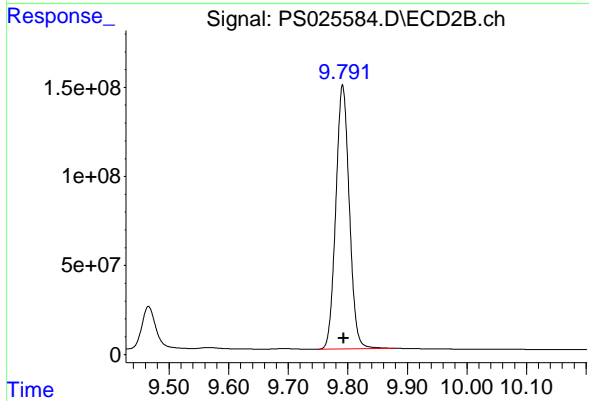
#13 2,4-DB

R.T.: 9.465 min  
 Delta R.T.: -0.003 min  
 Response: 385111488  
 Conc: 737.72 ng/ml



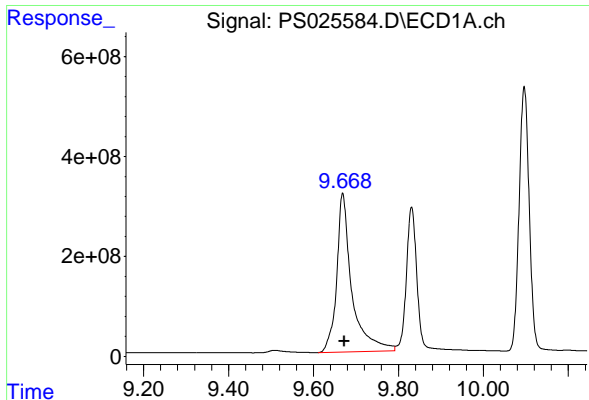
#14 DINOSEB

R.T.: 9.831 min  
 Delta R.T.: -0.002 min  
 Response: 4872757897  
 Conc: 710.57 ng/ml



#14 DINOSEB

R.T.: 9.791 min  
 Delta R.T.: -0.002 min  
 Response: 2336245823  
 Conc: 743.13 ng/ml



#15 Picloram

R.T.: 9.669 min  
 Delta R.T.: -0.004 min  
 Response: 7891702677  
 Conc: 762.77 ng/ml

Instrument :

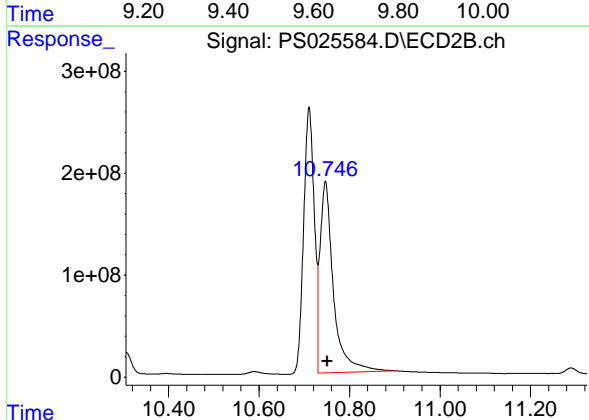
ECD\_S

ClientSampleId :

HSTDCCC750

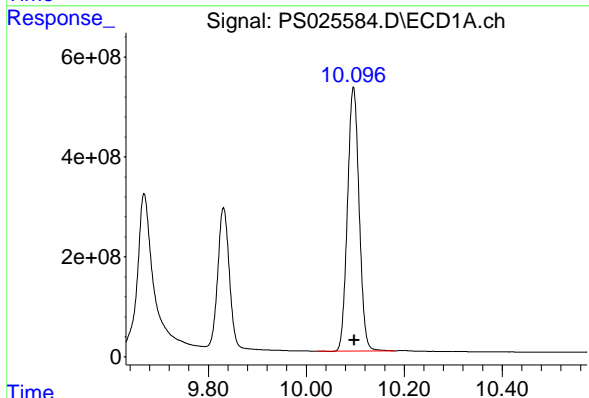
Manual Integrations  
 APPROVED

Reviewed By :Abdul Mirza 01/19/2024  
 Supervised By :Ankita Jodhani 01/19/2024



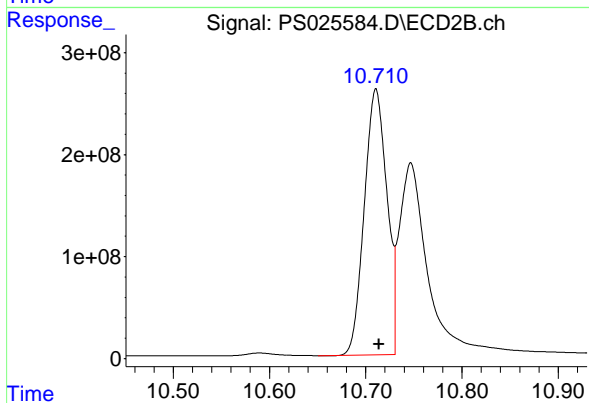
#15 Picloram

R.T.: 10.747 min  
 Delta R.T.: -0.004 min  
 Response: 3854932240  
 Conc: 725.04 ng/ml



#16 DCPA

R.T.: 10.096 min  
 Delta R.T.: -0.002 min  
 Response: 8714715660  
 Conc: 718.50 ng/ml



#16 DCPA

R.T.: 10.711 min  
 Delta R.T.: -0.003 min  
 Response: 4253066331  
 Conc: 731.47 ng/ml