

Data Path : Z:\pestpcbsrv\HPCHEM1\ECD\_S\Data\PS011921\  
 Data File : PS013811.D  
 Signal(s) : Signal #1: ECD1A.ch Signal #2: ECD2B.ch  
 Acq On : 19 Jan 2021 10:30  
 Operator : DD\AJ  
 Sample : HSTDCCC750  
 Misc :  
 ALS Vial : 3 Sample Multiplier: 1

Instrument :  
 ECD\_S  
 ClientSampleId :  
 HSTDCCC750

Integration File signal 1: autoint1.e  
 Integration File signal 2: autoint2.e  
 Quant Time: Jan 20 05:25:08 2021  
 Quant Method : Z:\pestpcbsrv\HPCHEM1\ECD\_S\Method\PS010421.M  
 Quant Title : 8080.M  
 QLast Update : Tue Jan 05 01:51:07 2021  
 Response via : Initial Calibration  
 Integrator: ChemStation

Volume Inj. : 2 µl  
 Signal #1 Phase : Rtx-CLPesticides Signal #2 Phase: Rtx-CLPesticides2  
 Signal #1 Info : 30M x 0.32mm x0.5 Signal #2 Info : 30M x 0.32mm x 0.25µm

	Compound	RT#1	RT#2	Resp#1	Resp#2	ng/ml	ng/ml
-----							
System Monitoring Compounds							
4) S	2,4-DCAA	7.206	6.909	769.0E6	298.4E6	804.785	742.085
Target Compounds							
1) T	Dalapon	3.030	2.624	796.5E6	343.9E6	732.319	661.501
2) T	3,5-DICHL...	6.423	6.064	1009.7E6	437.0E6	763.549	693.642
3) T	4-Nitroph...	7.042	6.524	346.9E6	172.0E6	729.676	678.058
5) T	DICAMBA	7.395	7.075	3029.1E6	1227.3E6	786.555	714.644
6) T	MCP P	7.563	7.169	223.4E6	100.3E6	77.972	70.973
7) T	MCPA	7.712	7.385	315.2E6	140.6E6	76.676	69.533
8) T	DICHLORPROP	8.086	7.700	750.1E6	312.7E6	774.910	702.223
9) T	2,4-D	8.318	7.997	853.5E6	384.4E6	805.763	693.443
10) T	Pentachlo...	8.624	8.421	11087.6E6	4143.0E6	782.625	716.692
11) T	2,4,5-TP ...	9.173	8.783	4389.6E6	1718.9E6	788.287	719.590
12) T	2,4,5-T	9.460	9.164	4418.4E6	1641.9E6	781.375	717.209
13) T	2,4-DB	10.015	9.671	693.1E6	211.3E6	709.295	694.692
14) T	DINOSEB	11.165	9.997	3465.2E6	1208.8E6	785.423	722.417
15) T	Picloram	11.003	10.994	5206.5E6	2246.7E6	720.854	646.418
16) T	DCPA	11.431	10.923	5619.6E6	2248.3E6	795.390	726.410

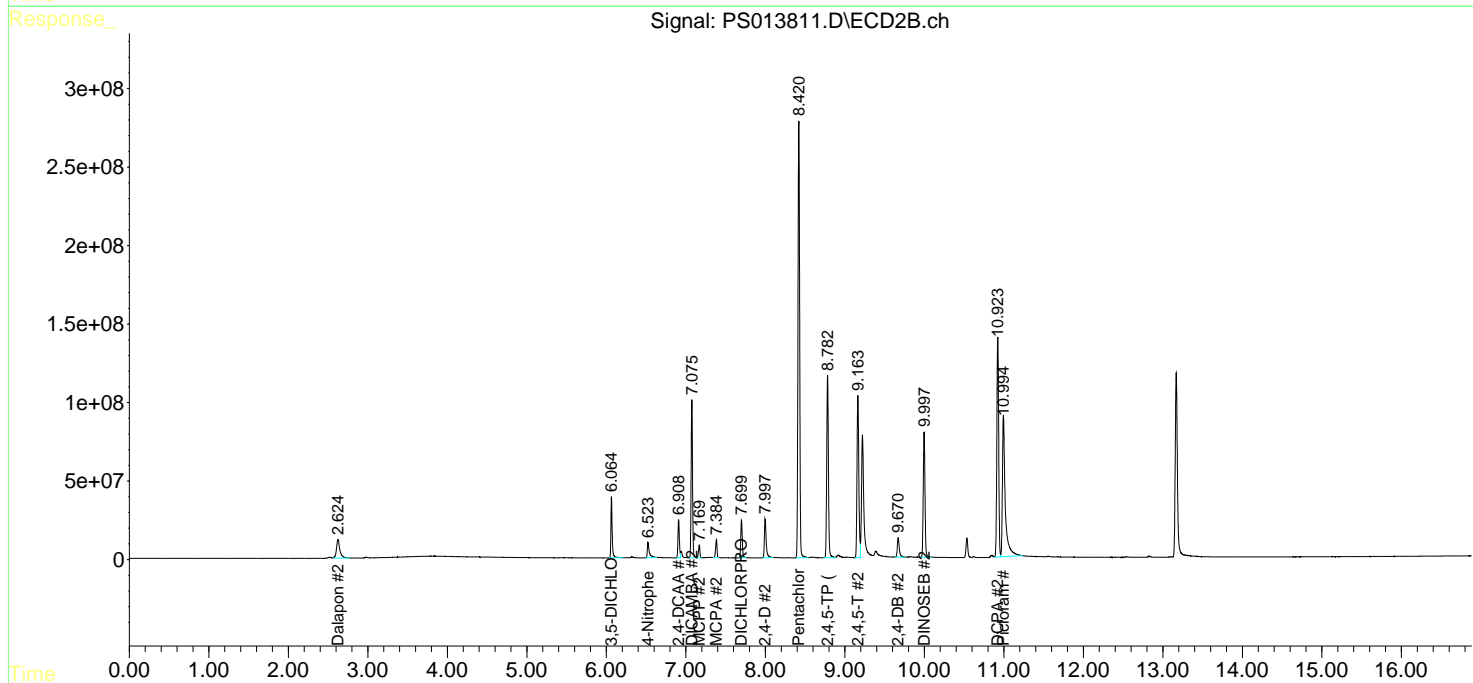
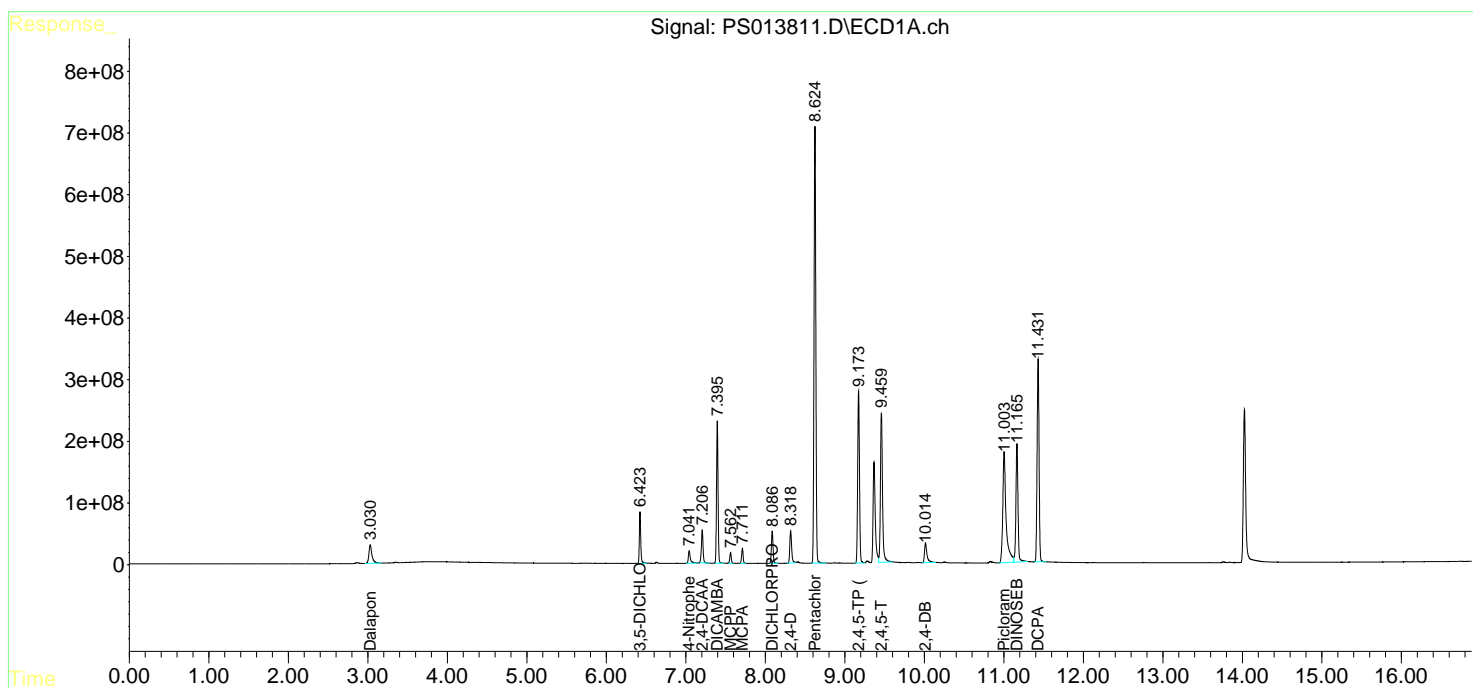
(f)=RT Delta > 1/2 Window (#)=Amounts differ by > 25% (m)=manual int.

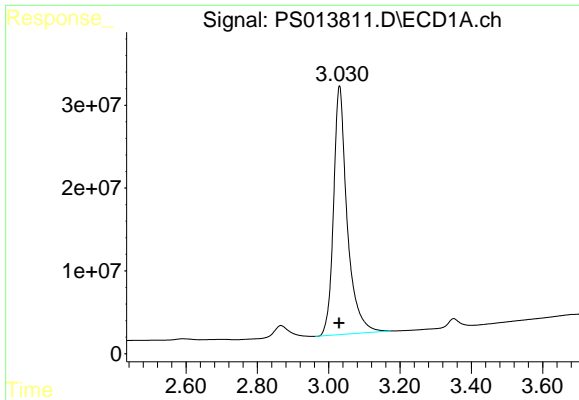
Data Path : Z:\pestpcbsrv\HPCHEM1\ECD\_S\Data\PS011921\  
 Data File : PS013811.D  
 Signal(s) : Signal #1: ECD1A.ch Signal #2: ECD2B.ch  
 Acq On : 19 Jan 2021 10:30  
 Operator : DD\AJ  
 Sample : HSTDCCC750  
 Misc :  
 ALS Vial : 3 Sample Multiplier: 1

Instrument :  
 ECD\_S  
 Client Sampled :  
 HSTDCCC750

Integration File signal 1: autoint1.e  
 Integration File signal 2: autoint2.e  
 Quant Time: Jan 20 05:25:08 2021  
 Quant Method : Z:\pestpcbsrv\HPCHEM1\ECD\_S\Method\PS010421.M  
 Quant Title : 8080.M  
 QLast Update : Tue Jan 05 01:51:07 2021  
 Response via : Initial Calibration  
 Integrator: ChemStation

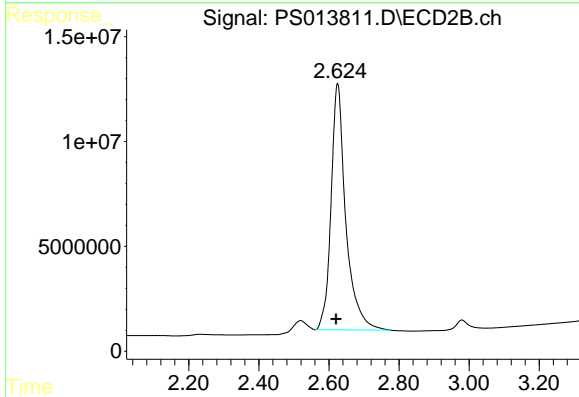
Volume Inj. : 2 µl  
 Signal #1 Phase : Rtx-CLPesticides Signal #2 Phase: Rtx-CLPesticides2  
 Signal #1 Info : 30M x 0.32mm x0.5 Signal #2 Info : 30M x 0.32mm x 0.25µm



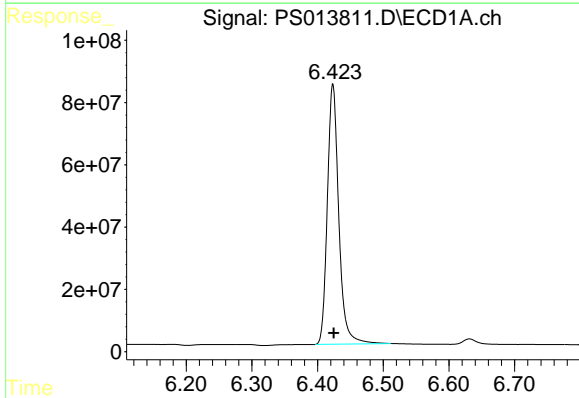


#1 Dalapon  
 R.T.: 3.030 min  
 Delta R.T.: 0.001 min  
 Response: 796488190  
 Conc: 732.32 ng/ml

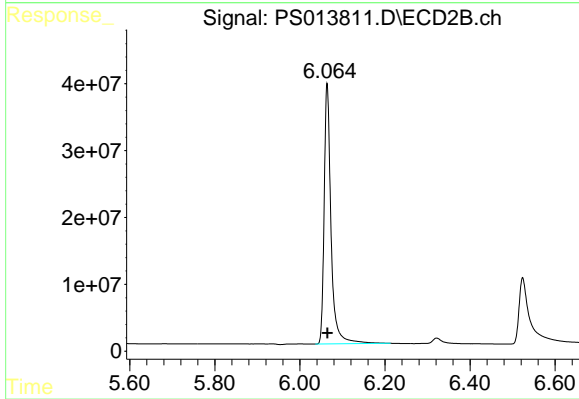
Instrument :  
 ECD\_S  
 ClientSampleId :  
 HSTDCCC750



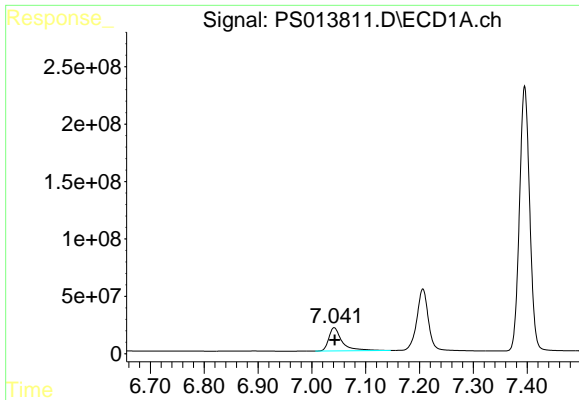
#1 Dalapon  
 R.T.: 2.624 min  
 Delta R.T.: 0.004 min  
 Response: 343947057  
 Conc: 661.50 ng/ml



#2 3,5-DICHLOROBENZOIC ACID  
 R.T.: 6.423 min  
 Delta R.T.: -0.001 min  
 Response: 1009727879  
 Conc: 763.55 ng/ml

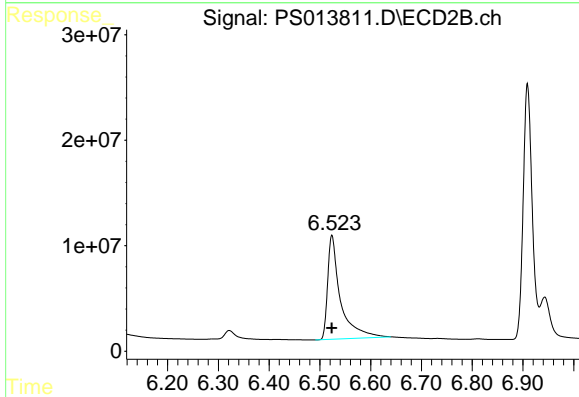


#2 3,5-DICHLOROBENZOIC ACID  
 R.T.: 6.064 min  
 Delta R.T.: 0.000 min  
 Response: 436996080  
 Conc: 693.64 ng/ml

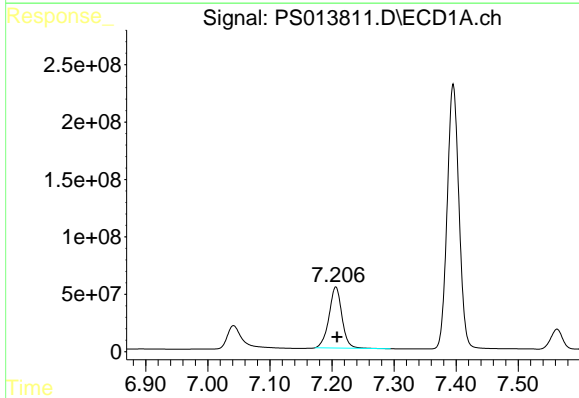


#3 4-Nitrophenol  
 R.T.: 7.042 min  
 Delta R.T.: 0.000 min  
 Response: 346912701  
 Conc: 729.68 ng/ml

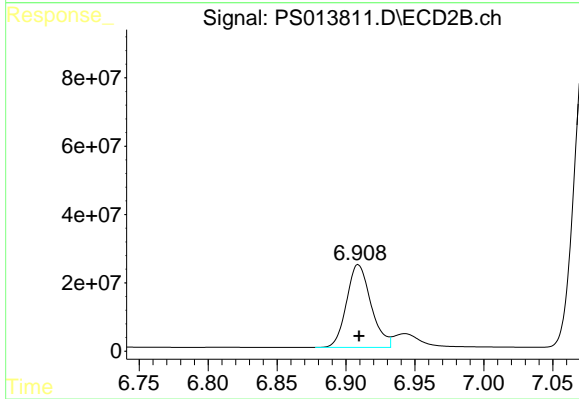
**Instrument :**  
 ECD\_S  
**ClientSampleId :**  
 HSTDCCC750



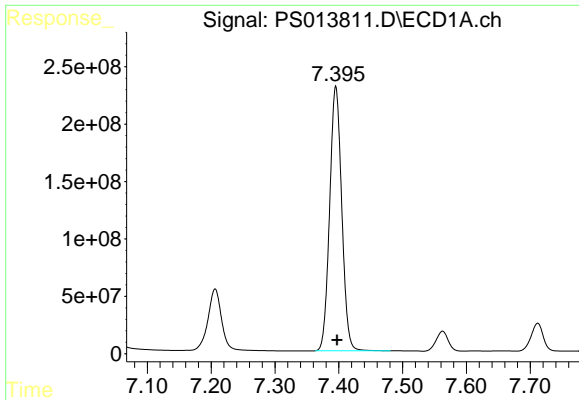
#3 4-Nitrophenol  
 R.T.: 6.524 min  
 Delta R.T.: 0.000 min  
 Response: 171962697  
 Conc: 678.06 ng/ml



#4 2,4-DCAA  
 R.T.: 7.206 min  
 Delta R.T.: -0.002 min  
 Response: 769046843  
 Conc: 804.78 ng/ml



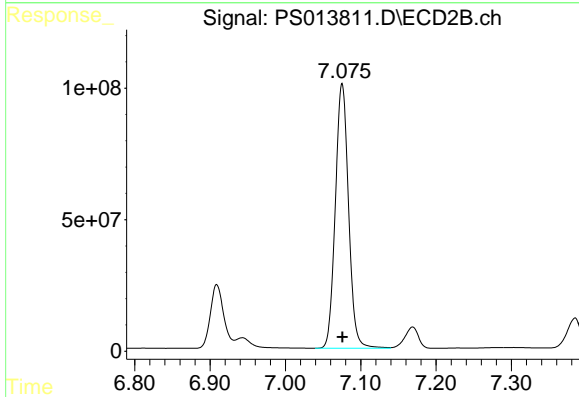
#4 2,4-DCAA  
 R.T.: 6.909 min  
 Delta R.T.: 0.000 min  
 Response: 298403382  
 Conc: 742.08 ng/ml



#5 DICAMBA

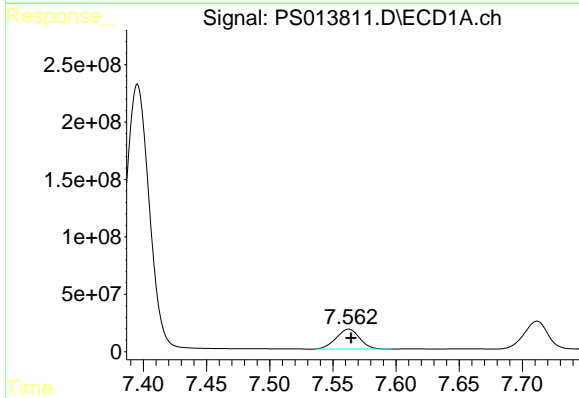
R.T.: 7.395 min  
 Delta R.T.: -0.002 min  
 Response: 3029063162  
 Conc: 786.55 ng/ml

Instrument :  
 ECD\_S  
 ClientSampleId :  
 HSTDCCC750



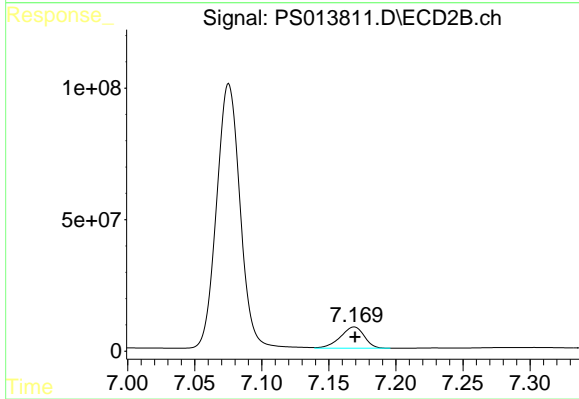
#5 DICAMBA

R.T.: 7.075 min  
 Delta R.T.: 0.000 min  
 Response: 1227298571  
 Conc: 714.64 ng/ml



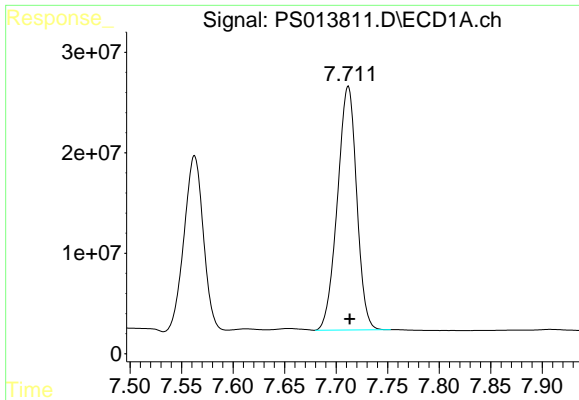
#6 MCP

R.T.: 7.563 min  
 Delta R.T.: -0.002 min  
 Response: 223358334  
 Conc: 77.97 ug/ml



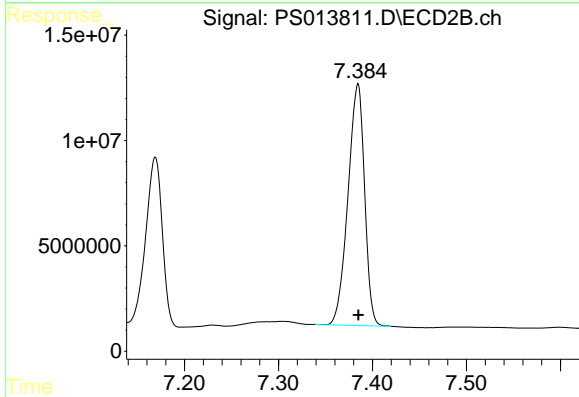
#6 MCP

R.T.: 7.169 min  
 Delta R.T.: 0.000 min  
 Response: 100294442  
 Conc: 70.97 ug/ml

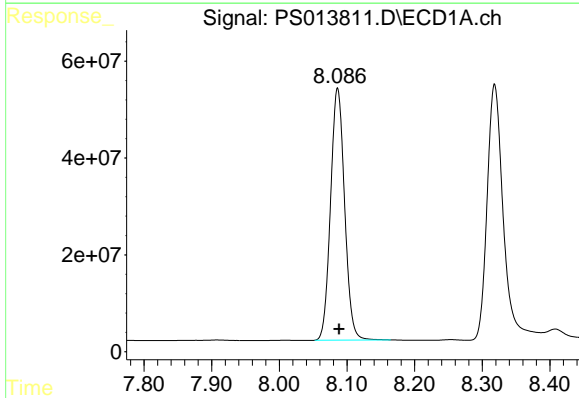


#7 MCPA  
 R.T.: 7.712 min  
 Delta R.T.: -0.002 min  
 Response: 315152825  
 Conc: 76.68 ug/ml

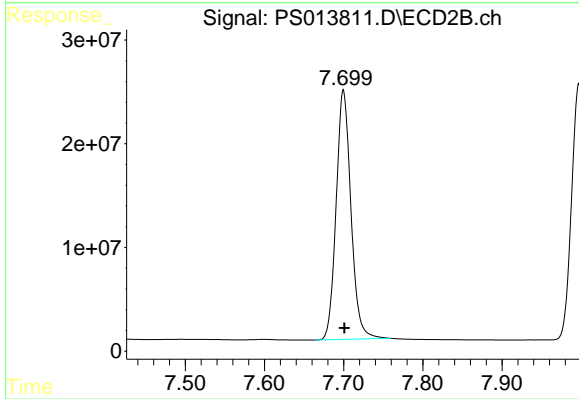
**Instrument :**  
 ECD\_S  
**ClientSampleId :**  
 HSTDCCC750



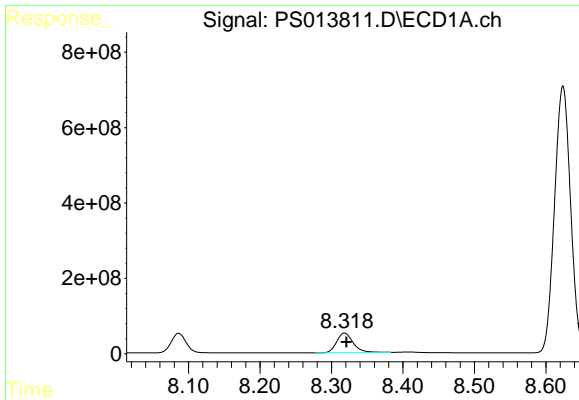
#7 MCPA  
 R.T.: 7.385 min  
 Delta R.T.: 0.000 min  
 Response: 140573178  
 Conc: 69.53 ug/ml



#8 DICHLORPROP  
 R.T.: 8.086 min  
 Delta R.T.: -0.002 min  
 Response: 750095106  
 Conc: 774.91 ng/ml

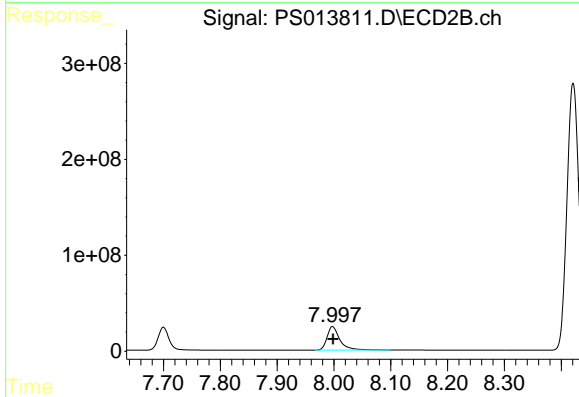


#8 DICHLORPROP  
 R.T.: 7.700 min  
 Delta R.T.: -0.001 min  
 Response: 312715869  
 Conc: 702.22 ng/ml

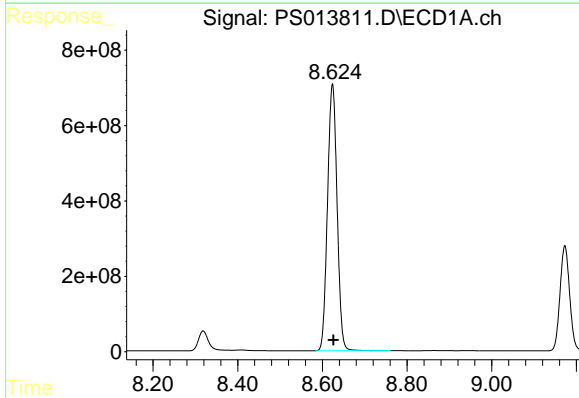


#9 2,4-D  
 R.T.: 8.318 min  
 Delta R.T.: -0.002 min  
 Response: 853546386  
 Conc: 805.76 ng/ml

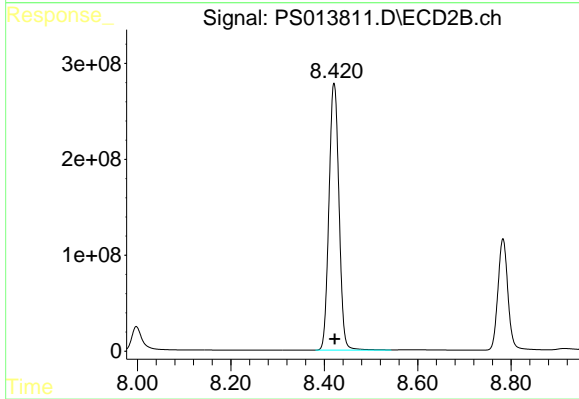
**Instrument :**  
 ECD\_S  
**ClientSampleId :**  
 HSTDCCC750



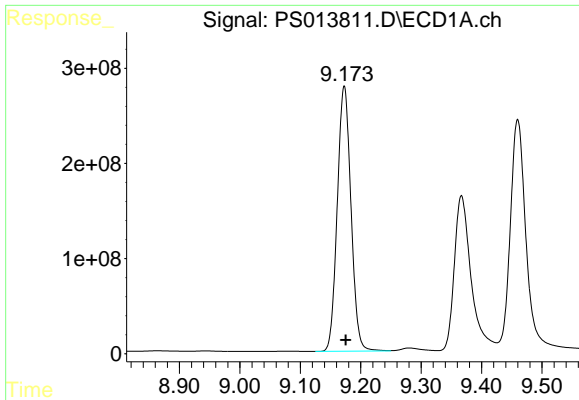
#9 2,4-D  
 R.T.: 7.997 min  
 Delta R.T.: -0.002 min  
 Response: 384445033  
 Conc: 693.44 ng/ml



#10 Pentachlorophenol  
 R.T.: 8.624 min  
 Delta R.T.: -0.003 min  
 Response: 11087619454  
 Conc: 782.62 ng/ml



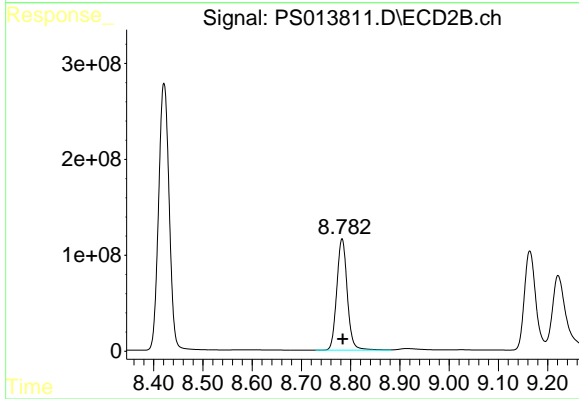
#10 Pentachlorophenol  
 R.T.: 8.421 min  
 Delta R.T.: -0.001 min  
 Response: 4142960905  
 Conc: 716.69 ng/ml



#11 2,4,5-TP (SILVEX)

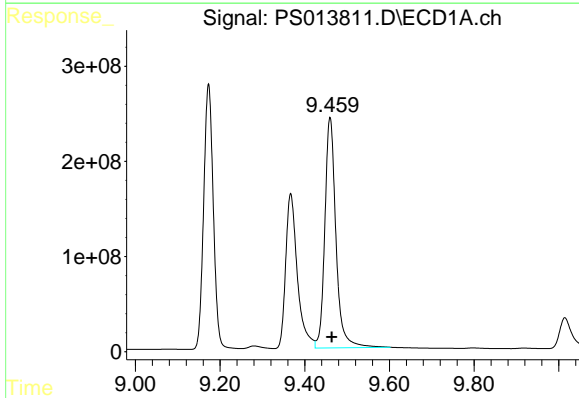
R.T.: 9.173 min  
 Delta R.T.: -0.003 min  
 Response: 4389566870  
 Conc: 788.29 ng/ml

Instrument :  
 ECD\_S  
 ClientSampleId :  
 HSTDCCC750



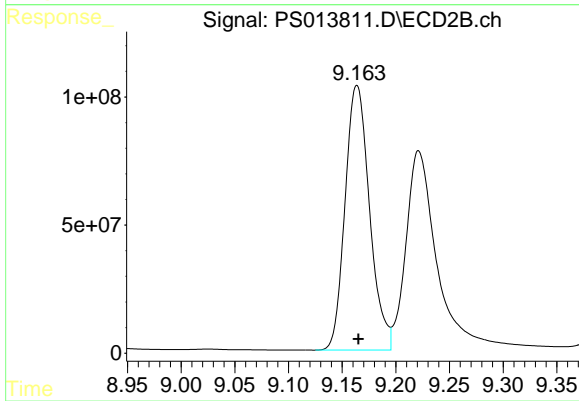
#11 2,4,5-TP (SILVEX)

R.T.: 8.783 min  
 Delta R.T.: 0.000 min  
 Response: 1718925536  
 Conc: 719.59 ng/ml



#12 2,4,5-T

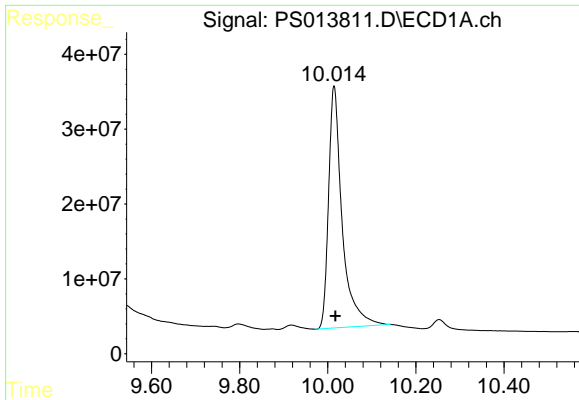
R.T.: 9.460 min  
 Delta R.T.: -0.003 min  
 Response: 4418396478  
 Conc: 781.37 ng/ml



#12 2,4,5-T

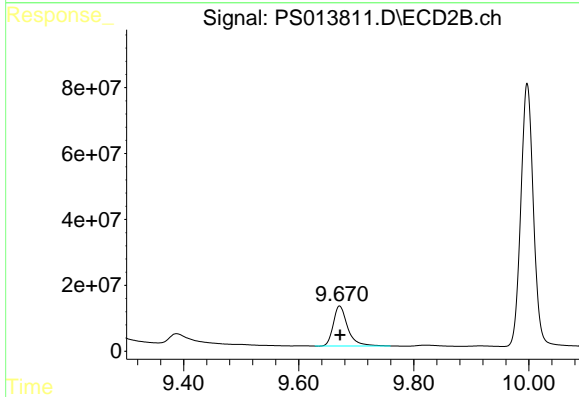
R.T.: 9.164 min  
 Delta R.T.: -0.001 min  
 Response: 1641927120  
 Conc: 717.21 ng/ml



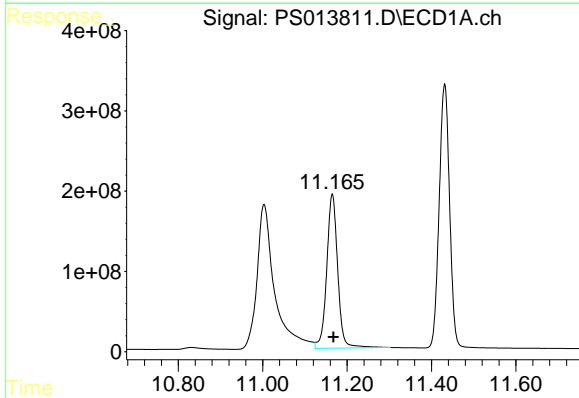


#13 2,4-DB  
 R.T.: 10.015 min  
 Delta R.T.: -0.003 min  
 Response: 693078886  
 Conc: 709.29 ng/ml

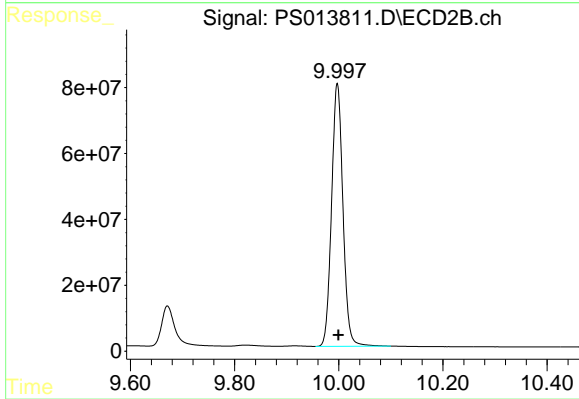
Instrument :  
 ECD\_S  
 ClientSampleId :  
 HSTDCCC750



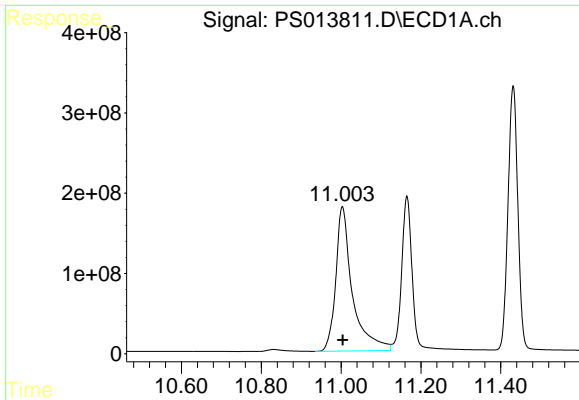
#13 2,4-DB  
 R.T.: 9.671 min  
 Delta R.T.: -0.001 min  
 Response: 211287548  
 Conc: 694.69 ng/ml



#14 DINOSEB  
 R.T.: 11.165 min  
 Delta R.T.: -0.003 min  
 Response: 3465174060  
 Conc: 785.42 ng/ml

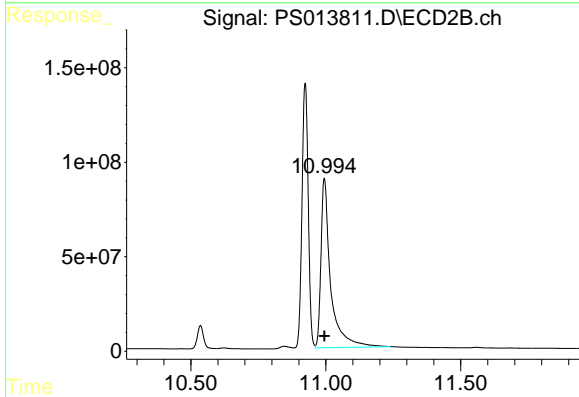


#14 DINOSEB  
 R.T.: 9.997 min  
 Delta R.T.: -0.002 min  
 Response: 1208834605  
 Conc: 722.42 ng/ml

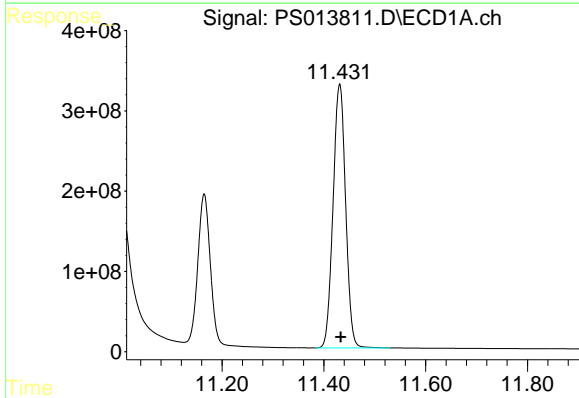


#15 Picloram  
 R.T.: 11.003 min  
 Delta R.T.: 0.000 min  
 Response: 5206452582  
 Conc: 720.85 ng/ml

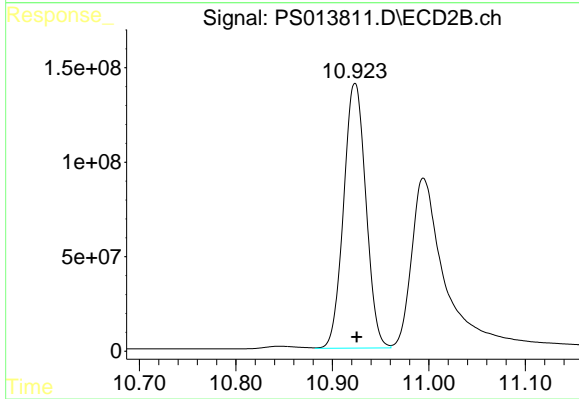
**Instrument :**  
 ECD\_S  
**ClientSampleId :**  
 HSTDCCC750



#15 Picloram  
 R.T.: 10.994 min  
 Delta R.T.: 0.000 min  
 Response: 2246651419  
 Conc: 646.42 ng/ml



#16 DCPA  
 R.T.: 11.431 min  
 Delta R.T.: -0.002 min  
 Response: 5619609172  
 Conc: 795.39 ng/ml



#16 DCPA  
 R.T.: 10.923 min  
 Delta R.T.: -0.002 min  
 Response: 2248262683  
 Conc: 726.41 ng/ml