

Data Path : Z:\pestpcbsrv\HPCHEM1\ECD_S\Data\PS011923\
 Data File : PS021815.D
 Signal(s) : Signal #1: ECD1A.ch Signal #2: ECD2B.ch
 Acq On : 19 Jan 2023 22:44
 Operator : AR\AJ
 Sample : 01180-01
 Misc :
 ALS Vial : 13 Sample Multiplier: 1

Instrument :
 ECD_S
 ClientSampleId :

Integration File signal 1: autoint1.e
 Integration File signal 2: autoint2.e
 Quant Time: Jan 20 03:28:30 2023
 Quant Method : Z:\pestpcbsrv\HPCHEM1\ECD_S\Method\PS010923.M
 Quant Title : 8080.M
 QLast Update : Tue Jan 10 10:34:52 2023
 Response via : Initial Calibration
 Integrator: ChemStation

Volume Inj. : 2 µl
 Signal #1 Phase : Rtx-CLPesticides Signal #2 Phase: Rtx-CLPesticides2
 Signal #1 Info : 30M x 0.32mm x0.5 Signal #2 Info : 30M x 0.32mm x 0.25µm

Compound	RT#1	RT#2	Resp#1	Resp#2	ng/ml	ng/ml
System Monitoring Compounds						
4) S 2,4-DCAA	6.373	6.808	1049.6E6	655.2E6	377.088	364.695
Target Compounds						
1) T Dalapon	2.434f	2.517f	101.3E6	730.5E6	35.813	283.782 #
2) T 3,5-DICHL...	5.767	5.999	958.0E6	92470804	247.664	33.554 #
3) T 4-Nitroph...	6.191	6.445	69250035	39322695	47.509	35.871
5) T DICAMBA	6.513	6.969	9027025	13349154	<MDL	1.570 #
6) T MCPP	6.674	7.100	65230133	8629600	6.808	1.301 #
7) T MCPA	6.835	7.275	99860647	83903170	7.731	9.251
8) T DICHLORPROP	7.101	7.632	12699222	10800.5E6	3.937	5062.277 #
9) T 2,4-D	7.330	7.872	4108543	80618211	1.058	31.909 #
10) T Pentachlo...	7.539	8.379f	-83122424	234.8E6	N.D.	8.182
11) T 2,4,5-TP ...	8.090	8.702	2782.3E6	305.6E6	150.999	25.702 #
12) T 2,4,5-T	8.332	9.071	656.3E6	566.5E6	34.046	50.713 #
13) T 2,4-DB	8.861	9.574	6442.8E6	7169.0E6	2035.377	4784.890 #
14) T DINOSEB	9.841f	9.885	98499.0E6	1033.3E6	6001.052	124.327 #
15) T Picloram	0.000	10.878	0	1600.0E6	N.D.	90.351
16) T DCPA	10.175	10.800	1063.4E6	1609.2E6	43.045	115.436 #

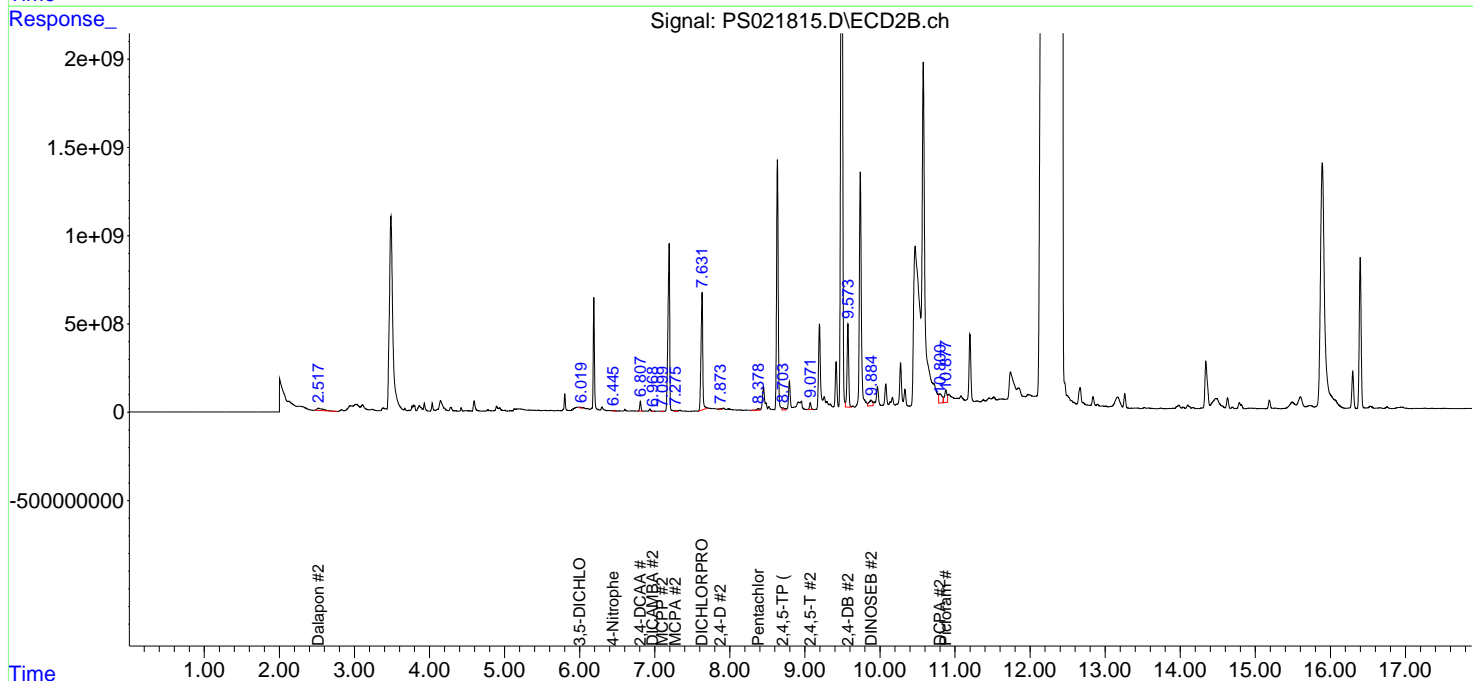
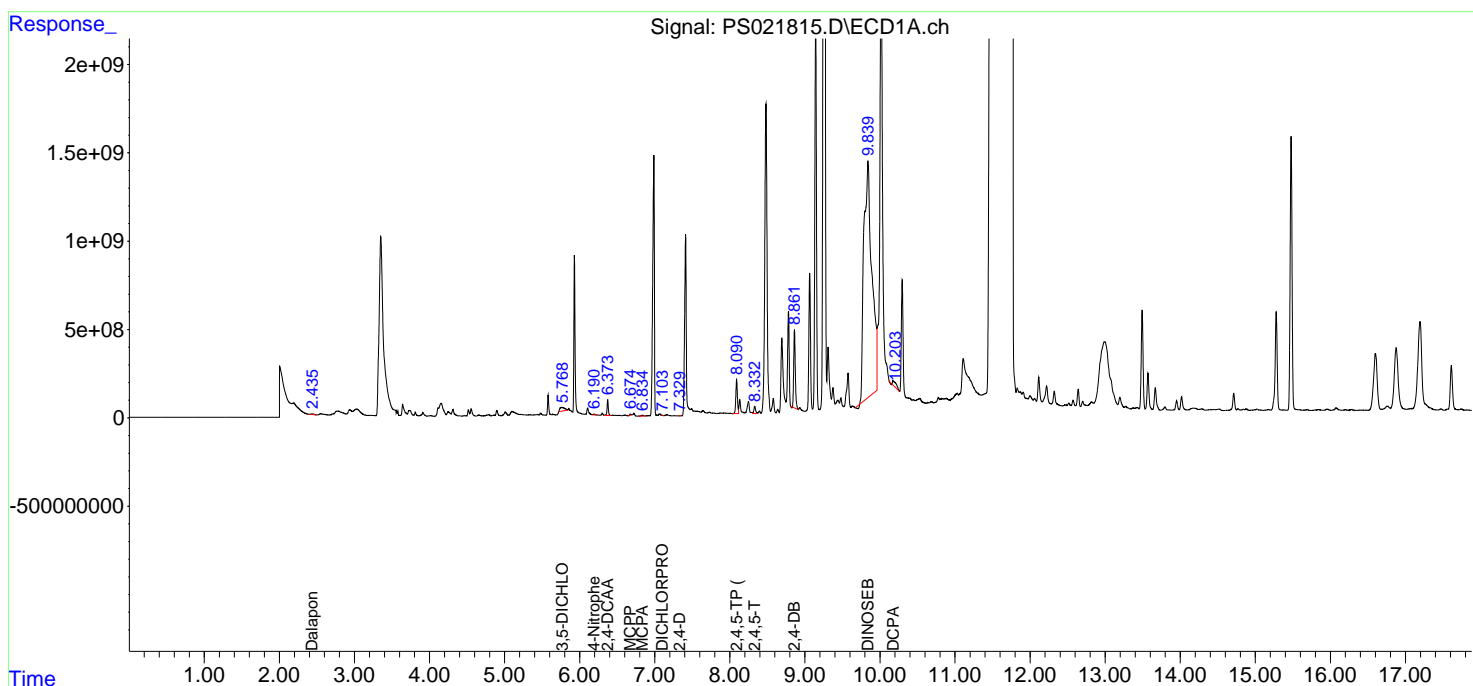
(f)=RT Delta > 1/2 Window (#)=Amounts differ by > 25% (m)=manual int.

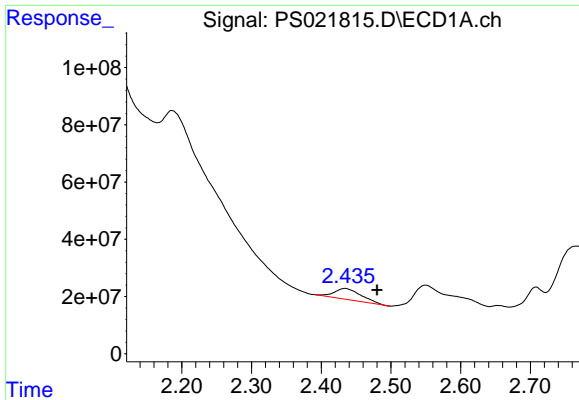
Data Path : Z:\pestpcbsrv\HPCHEM1\ECD_S\Data\PS011923\
 Data File : PS021815.D
 Signal(s) : Signal #1: ECD1A.ch Signal #2: ECD2B.ch
 Acq On : 19 Jan 2023 22:44
 Operator : AR\AJ
 Sample : 01180-01
 Misc :
 ALS Vial : 13 Sample Multiplier: 1

Instrument :
 ECD_S
 ClientSampleId :

Integration File signal 1: autoint1.e
 Integration File signal 2: autoint2.e
 Quant Time: Jan 20 03:28:30 2023
 Quant Method : Z:\pestpcbsrv\HPCHEM1\ECD_S\Method\PS010923.M
 Quant Title : 8080.M
 QLast Update : Tue Jan 10 10:34:52 2023
 Response via : Initial Calibration
 Integrator: ChemStation

Volume Inj. : 2 µl
 Signal #1 Phase : Rtx-CLPesticides Signal #2 Phase: Rtx-CLPesticides2
 Signal #1 Info : 30M x 0.32mm x 0.5 Signal #2 Info : 30M x 0.32mm x 0.25µm

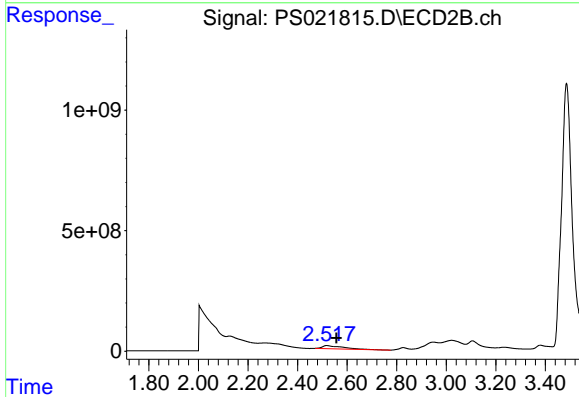




#1 Dalapon

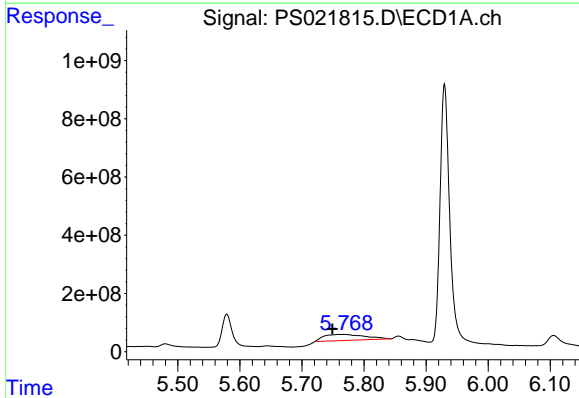
R.T.: 2.434 min
 Delta R.T.: -0.046 min
 Response: 101312327
 Conc: 35.81 ng/ml

Instrument :
 ECD_S
 ClientSampleId :



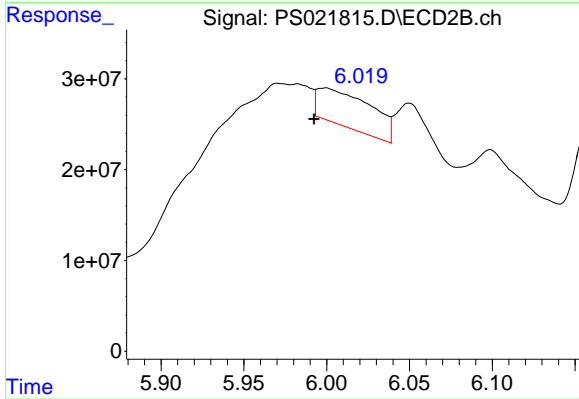
#1 Dalapon

R.T.: 2.517 min
 Delta R.T.: -0.040 min
 Response: 730535112
 Conc: 283.78 ng/ml



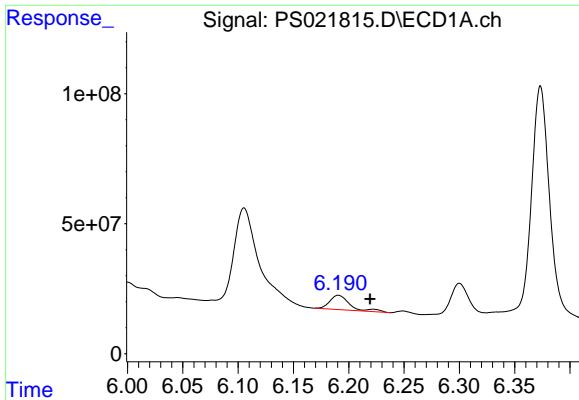
#2 3,5-DICHLOROBENZOIC ACID

R.T.: 5.767 min
 Delta R.T.: 0.018 min
 Response: 958031193
 Conc: 247.66 ng/ml



#2 3,5-DICHLOROBENZOIC ACID

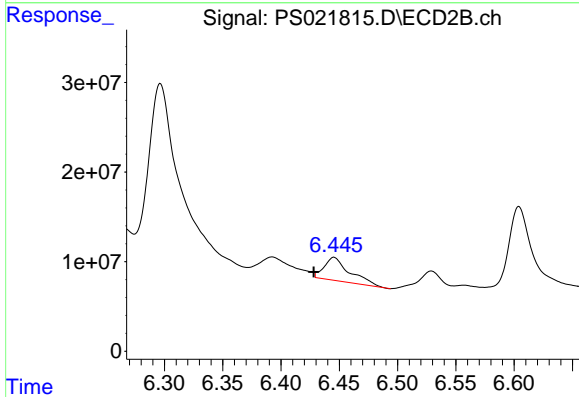
R.T.: 5.999 min
 Delta R.T.: 0.007 min
 Response: 92470804
 Conc: 33.55 ng/ml



#3 4-Nitrophenol

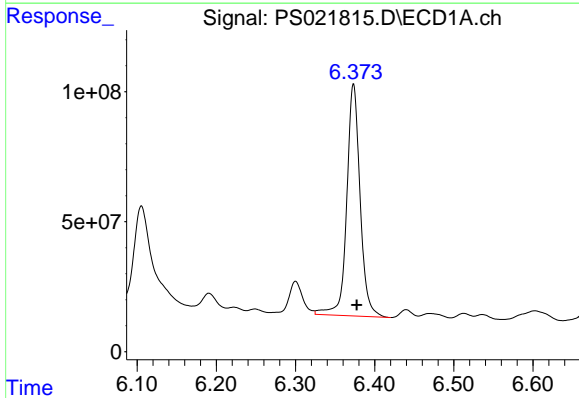
R.T.: 6.191 min
 Delta R.T.: -0.028 min
 Response: 69250035
 Conc: 47.51 ng/ml

Instrument :
 ECD_S
 ClientSampleId :



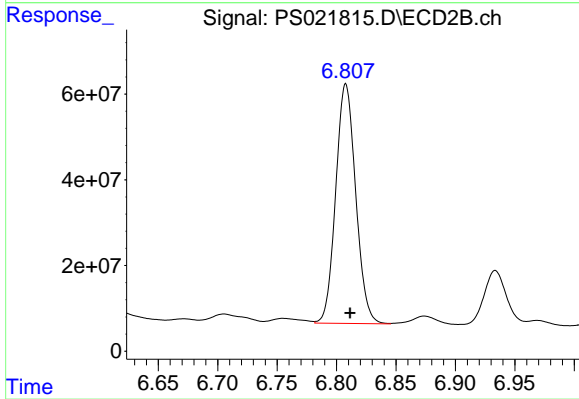
#3 4-Nitrophenol

R.T.: 6.445 min
 Delta R.T.: 0.017 min
 Response: 39322695
 Conc: 35.87 ng/ml



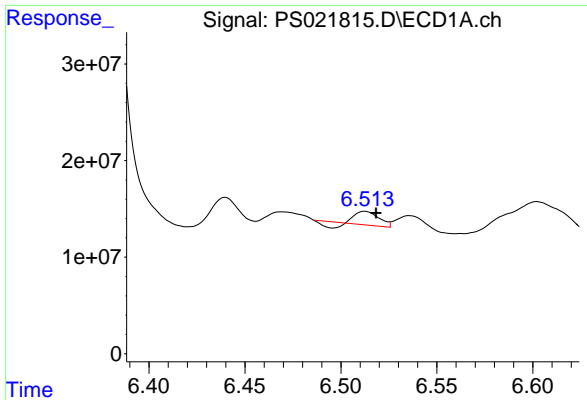
#4 2,4-DCAA

R.T.: 6.373 min
 Delta R.T.: -0.004 min
 Response: 1049649240
 Conc: 377.09 ng/ml



#4 2,4-DCAA

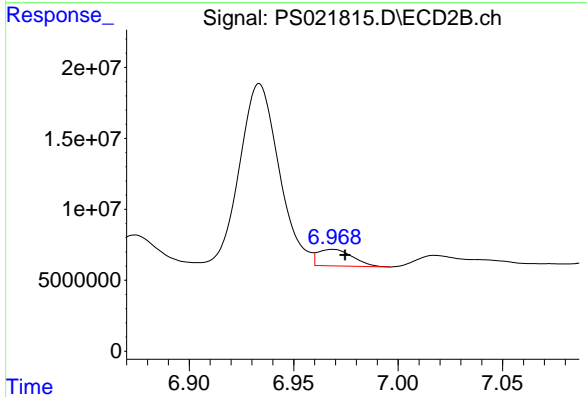
R.T.: 6.808 min
 Delta R.T.: -0.004 min
 Response: 655243249
 Conc: 364.69 ng/ml



#5 DICAMBA

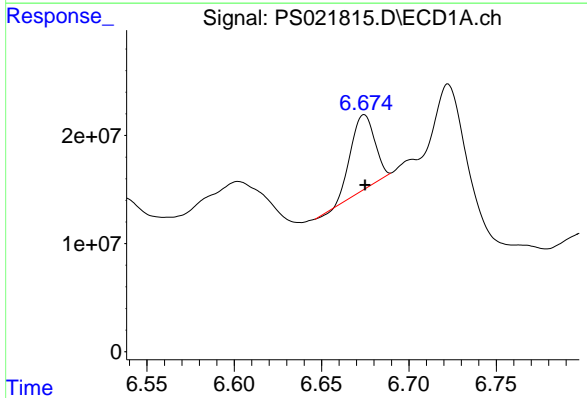
R.T.: 6.513 min
 Delta R.T.: -0.006 min
 Response: 9027025
 Conc: N.D.

Instrument :
 ECD_S
 ClientSampleId :



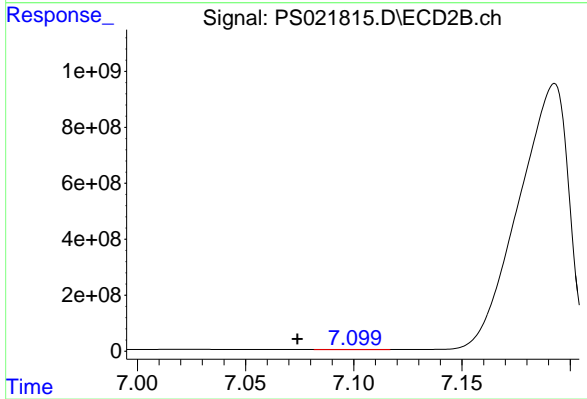
#5 DICAMBA

R.T.: 6.969 min
 Delta R.T.: -0.006 min
 Response: 13349154
 Conc: 1.57 ng/ml



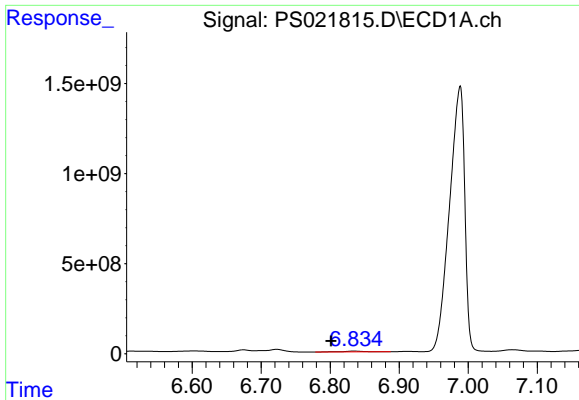
#6 MCP

R.T.: 6.674 min
 Delta R.T.: 0.000 min
 Response: 65230133
 Conc: 6.81 ug/ml



#6 MCP

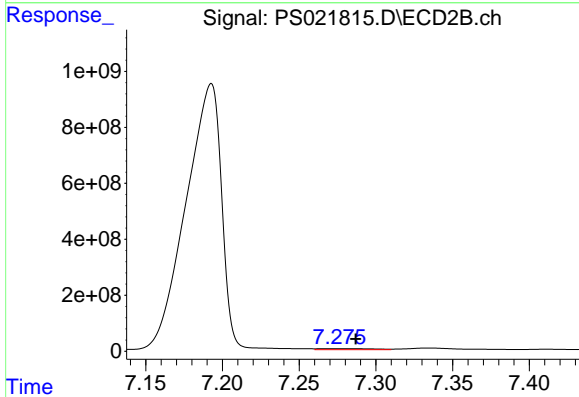
R.T.: 7.100 min
 Delta R.T.: 0.026 min
 Response: 8629600
 Conc: 1.30 ug/ml



#7 MCPA

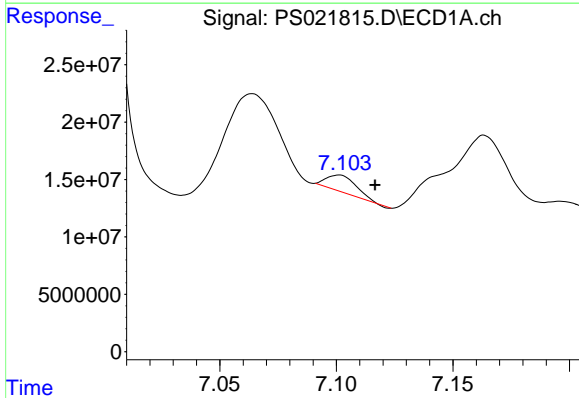
R.T.: 6.835 min
 Delta R.T.: 0.033 min
 Response: 99860647
 Conc: 7.73 ug/ml

Instrument :
 ECD_S
 ClientSampleId :



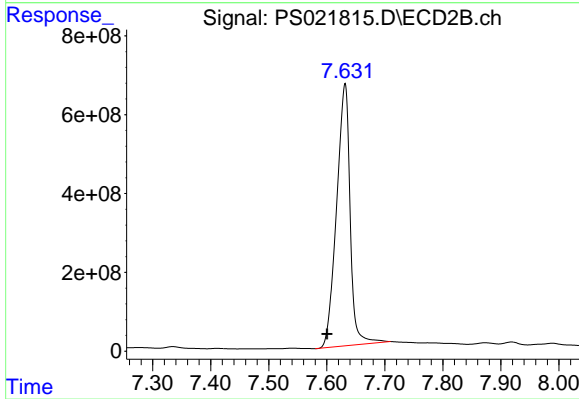
#7 MCPA

R.T.: 7.275 min
 Delta R.T.: -0.012 min
 Response: 83903170
 Conc: 9.25 ug/ml



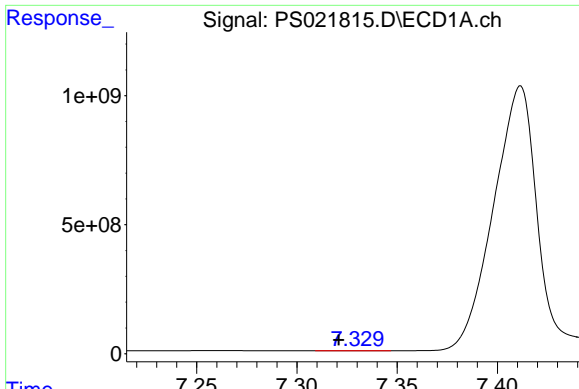
#8 DICHLORPROP

R.T.: 7.101 min
 Delta R.T.: -0.016 min
 Response: 12699222
 Conc: 3.94 ng/ml



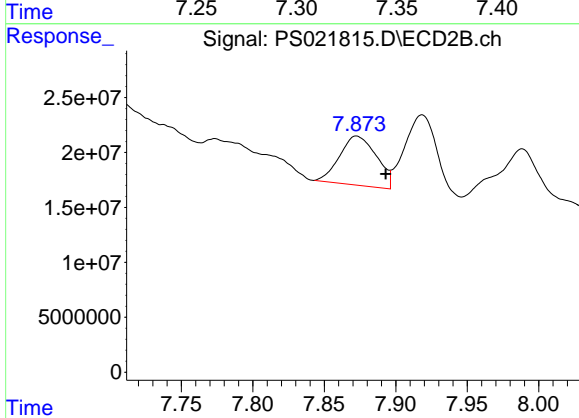
#8 DICHLORPROP

R.T.: 7.632 min
 Delta R.T.: 0.031 min
 Response: 10800542818
 Conc: 5062.28 ng/ml

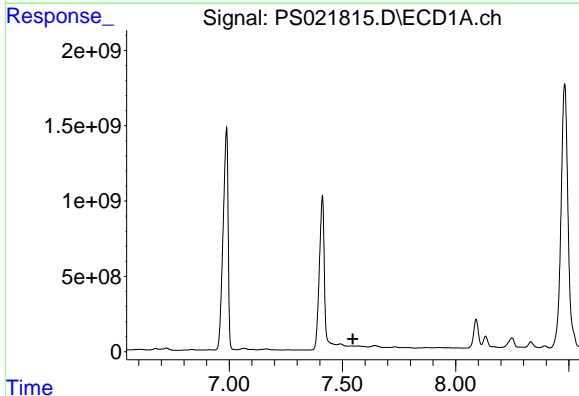


#9 2,4-D
 R.T.: 7.330 min
 Delta R.T.: 0.009 min
 Response: 4108543
 Conc: 1.06 ng/ml

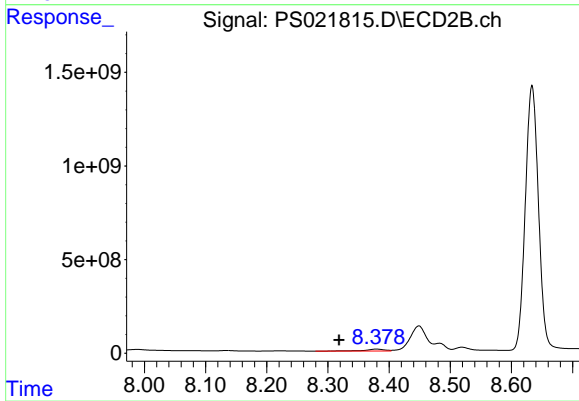
Instrument :
 ECD_S
 ClientSampleId :



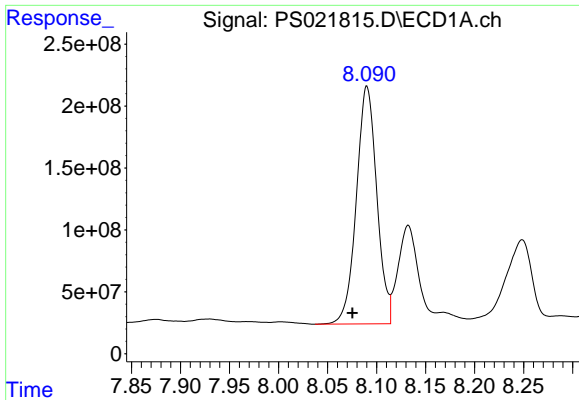
#9 2,4-D
 R.T.: 7.872 min
 Delta R.T.: -0.021 min
 Response: 80618211
 Conc: 31.91 ng/ml



#10 Pentachlorophenol
 R.T.: 7.539 min
 Delta R.T.: -0.007 min
 Response: -83122424
 Conc: N.D.



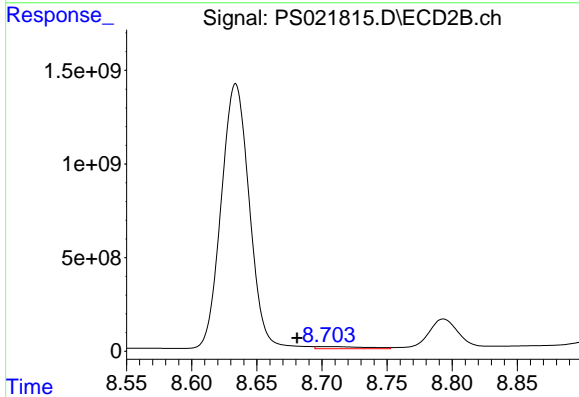
#10 Pentachlorophenol
 R.T.: 8.379 min
 Delta R.T.: 0.061 min
 Response: 234816398
 Conc: 8.18 ng/ml



#11 2,4,5-TP (SILVEX)

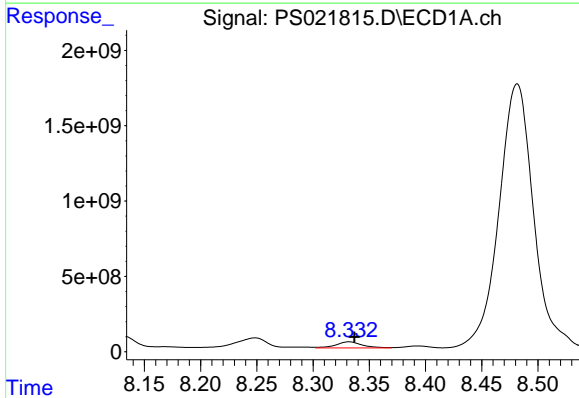
R.T.: 8.090 min
 Delta R.T.: 0.015 min
 Response: 2782329902
 Conc: 151.00 ng/ml

Instrument :
 ECD_S
 ClientSampleId :



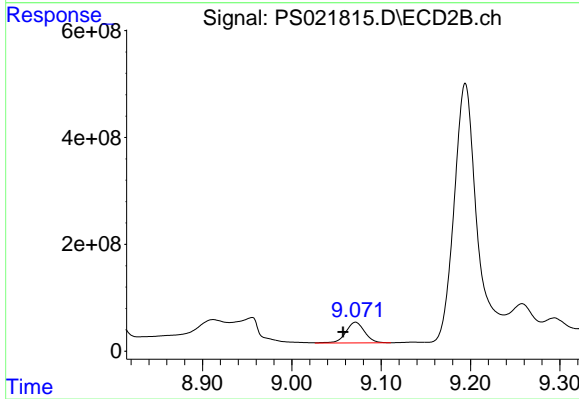
#11 2,4,5-TP (SILVEX)

R.T.: 8.702 min
 Delta R.T.: 0.021 min
 Response: 305611526
 Conc: 25.70 ng/ml



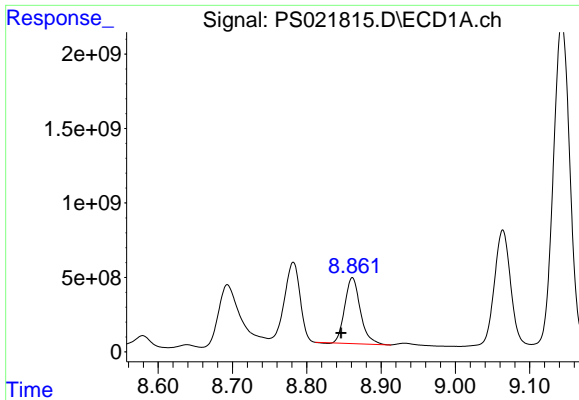
#12 2,4,5-T

R.T.: 8.332 min
 Delta R.T.: -0.005 min
 Response: 656264781
 Conc: 34.05 ng/ml



#12 2,4,5-T

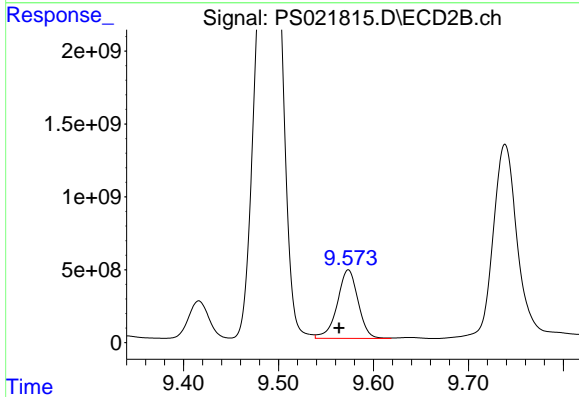
R.T.: 9.071 min
 Delta R.T.: 0.014 min
 Response: 566463025
 Conc: 50.71 ng/ml



#13 2,4-DB

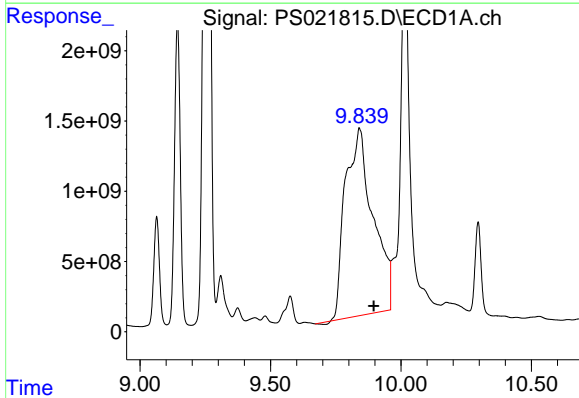
R.T.: 8.861 min
 Delta R.T.: 0.015 min
 Response: 6442844530
 Conc: 2035.38 ng/ml

Instrument :
 ECD_S
 ClientSampleId :



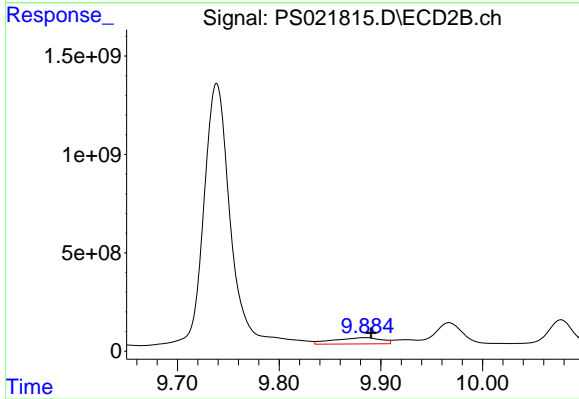
#13 2,4-DB

R.T.: 9.574 min
 Delta R.T.: 0.010 min
 Response: 7168995240
 Conc: 4784.89 ng/ml



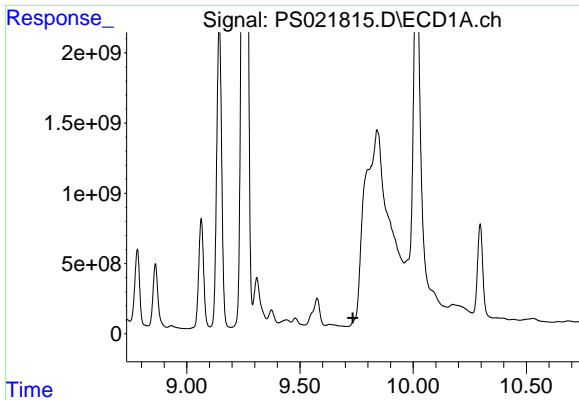
#14 DINOSEB

R.T.: 9.841 min
 Delta R.T.: -0.055 min
 Response: 98499008231
 Conc: 6001.05 ng/ml



#14 DINOSEB

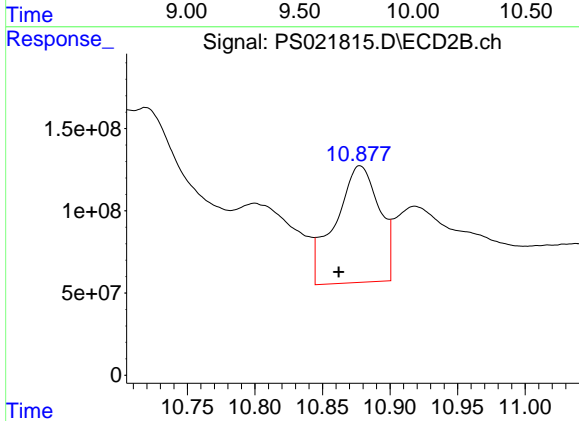
R.T.: 9.885 min
 Delta R.T.: -0.006 min
 Response: 1033259551
 Conc: 124.33 ng/ml



#15 Picloram

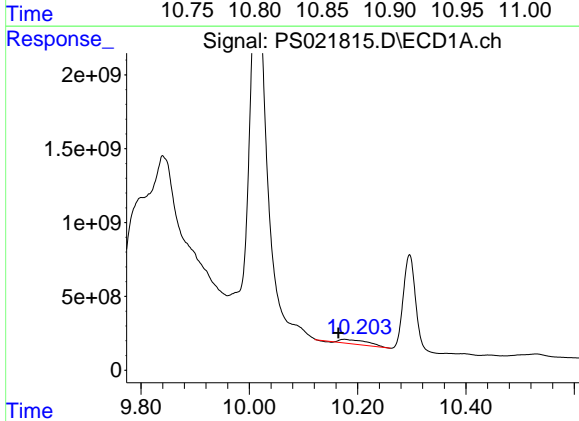
R.T.: 0.000 min
 Exp R.T.: 9.734 min
 Response: 0
 Conc: N.D.

Instrument :
 ECD_S
 ClientSampleId :



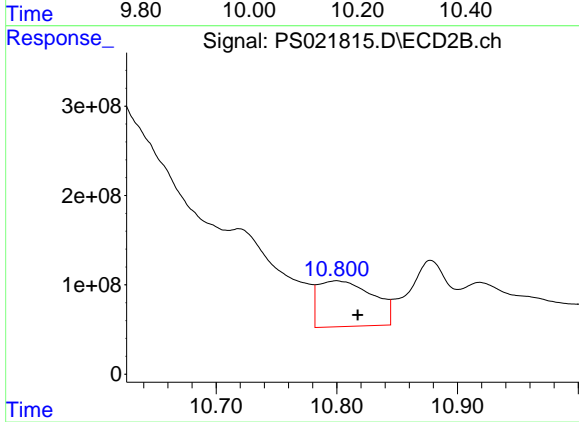
#15 Picloram

R.T.: 10.878 min
 Delta R.T.: 0.016 min
 Response: 1599973626
 Conc: 90.35 ng/ml



#16 DCPA

R.T.: 10.175 min
 Delta R.T.: 0.011 min
 Response: 1063369285
 Conc: 43.04 ng/ml



#16 DCPA

R.T.: 10.800 min
 Delta R.T.: -0.017 min
 Response: 1609153408
 Conc: 115.44 ng/ml