

Data Path : Z:\pestpcbsrv\HPCHEM1\ECD_S\Data\PS011923\
 Data File : PS021817.D
 Signal(s) : Signal #1: ECD1A.ch Signal #2: ECD2B.ch
 Acq On : 19 Jan 2023 23:32
 Operator : AR\AJ
 Sample : 01217-14
 Misc :
 ALS Vial : 15 Sample Multiplier: 1

Instrument :
 ECD_S
 ClientSampleId :

Integration File signal 1: autoint1.e
 Integration File signal 2: autoint2.e
 Quant Time: Jan 20 03:29:21 2023
 Quant Method : Z:\pestpcbsrv\HPCHEM1\ECD_S\Method\PS010923.M
 Quant Title : 8080.M
 QLast Update : Tue Jan 10 10:34:52 2023
 Response via : Initial Calibration
 Integrator: ChemStation

Volume Inj. : 2 µl
 Signal #1 Phase : Rtx-CLPesticides Signal #2 Phase: Rtx-CLPesticides2
 Signal #1 Info : 30M x 0.32mm x0.5 Signal #2 Info : 30M x 0.32mm x 0.25µm

| | Compound | RT#1 | RT#2 | Resp#1 | Resp#2 | ng/ml | ng/ml |
|-----------------------------|--------------|--------|--------|------------|-----------|----------|------------|
| ----- | | | | | | | |
| System Monitoring Compounds | | | | | | | |
| 4) S | 2,4-DCAA | 6.374 | 6.808 | 1075.9E6 | 692.4E6 | 386.521 | 385.394 |
| Target Compounds | | | | | | | |
| 1) T | Dalapon | 2.435f | 2.561 | 132.1E6 | 368.5E6 | 46.708 | 143.142 # |
| 2) T | 3,5-DICHL... | 5.744 | 6.003 | 734.4E6 | 107.4E6 | 189.846 | 38.965 # |
| 3) T | 4-Nitroph... | 6.224 | 6.468 | 19926604 | 12227714 | 13.671 | 11.154 |
| 5) T | DICAMBA | 6.513 | 6.966 | 54481125 | 19318500 | 4.456 | 2.272 # |
| 6) T | MCP P | 6.674 | 7.070 | 39849658 | 3490146 | 4.159 | <MDL # |
| 7) T | MCPA | 6.833 | 7.274 | 79559485 | 72370157 | 6.159 | 7.980 # |
| 8) T | DICHLORPROP | 7.164f | 7.631 | 28519065 | 10907.4E6 | 8.842 | 5112.356 # |
| 9) T | 2,4-D | 7.349 | 7.875 | 6310059 | 48432936 | 1.625 | 19.170 # |
| 11) T | 2,4,5-TP ... | 8.091 | 8.635f | 2230.6E6 | 19578.9E6 | 121.056 | 1646.617 # |
| 12) T | 2,4,5-T | 8.333 | 9.071 | 679.6E6 | 828.3E6 | 35.258 | 74.154 # |
| 13) T | 2,4-DB | 8.861 | 9.574 | 8446.1E6 | 9000.0E6 | 2668.240 | 6006.992 # |
| 14) T | DINOSEB | 9.843f | 9.886 | 114591.1E6 | 1236.5E6 | 6981.462 | 148.779 # |
| 15) T | Picloram | 0.000 | 10.878 | 0 | 1669.6E6 | N.D. | 94.282 |
| 16) T | DCPA | 10.175 | 10.803 | 571.1E6 | 1805.5E6 | 23.117 | 129.525 # |
| ----- | | | | | | | |

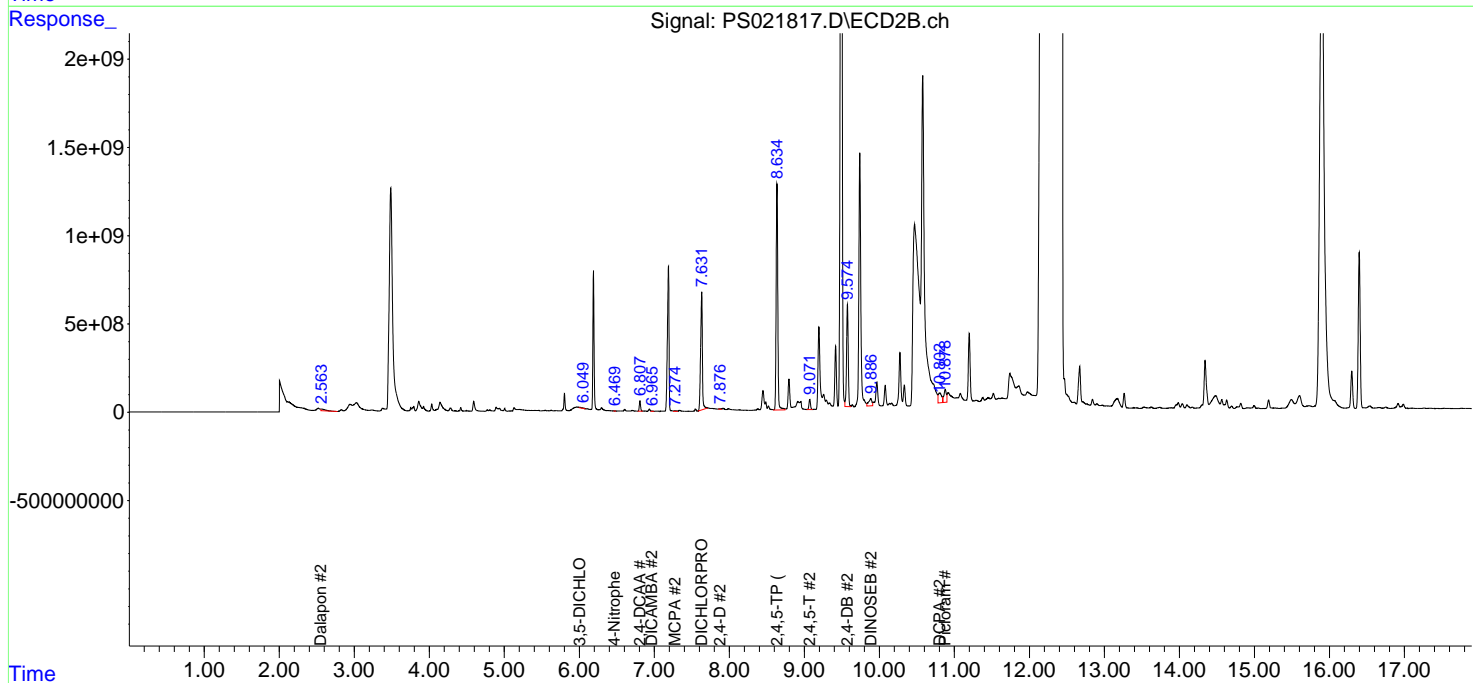
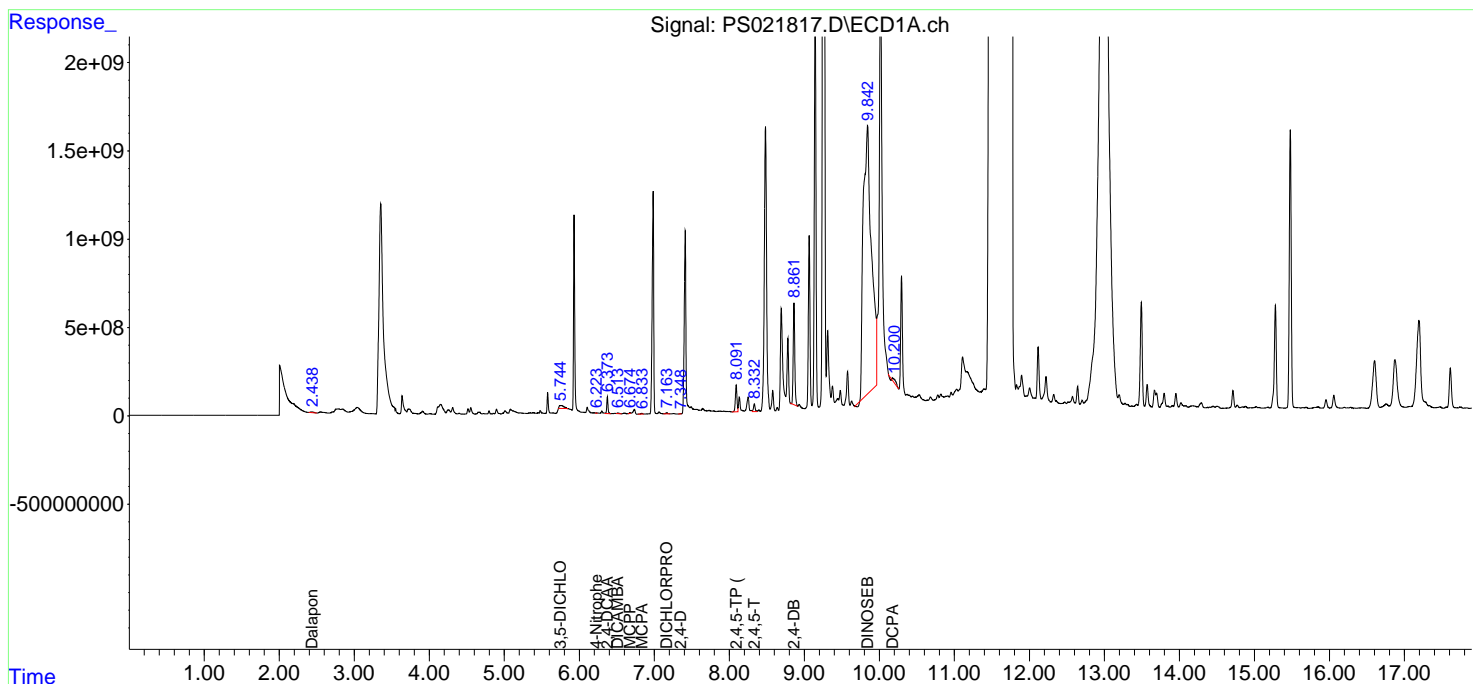
(f)=RT Delta > 1/2 Window (#)=Amounts differ by > 25% (m)=manual int.

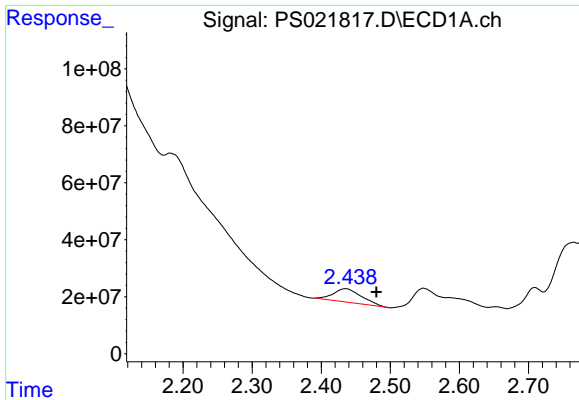
Data Path : Z:\pestpcbsrv\HPCHEM1\ECD_S\Data\PS011923\
 Data File : PS021817.D
 Signal(s) : Signal #1: ECD1A.ch Signal #2: ECD2B.ch
 Acq On : 19 Jan 2023 23:32
 Operator : AR\AJ
 Sample : 01217-14
 Misc :
 ALS Vial : 15 Sample Multiplier: 1

Instrument :
 ECD_S
 ClientSampleId :

Integration File signal 1: autoint1.e
 Integration File signal 2: autoint2.e
 Quant Time: Jan 20 03:29:21 2023
 Quant Method : Z:\pestpcbsrv\HPCHEM1\ECD_S\Method\PS010923.M
 Quant Title : 8080.M
 QLast Update : Tue Jan 10 10:34:52 2023
 Response via : Initial Calibration
 Integrator: ChemStation

Volume Inj. : 2 µl
 Signal #1 Phase : Rtx-CLPesticides Signal #2 Phase: Rtx-CLPesticides2
 Signal #1 Info : 30M x 0.32mm x0.5 Signal #2 Info : 30M x 0.32mm x 0.25µm

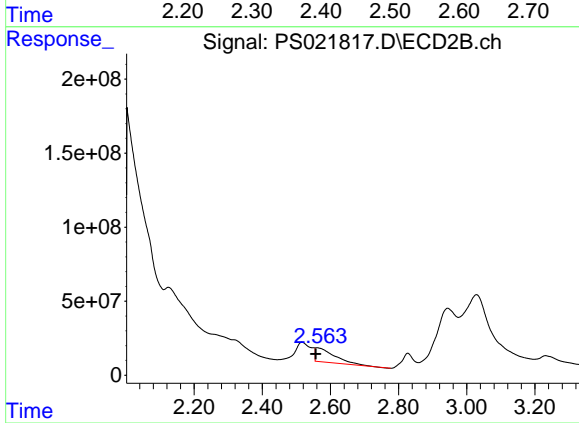




#1 Dalapon

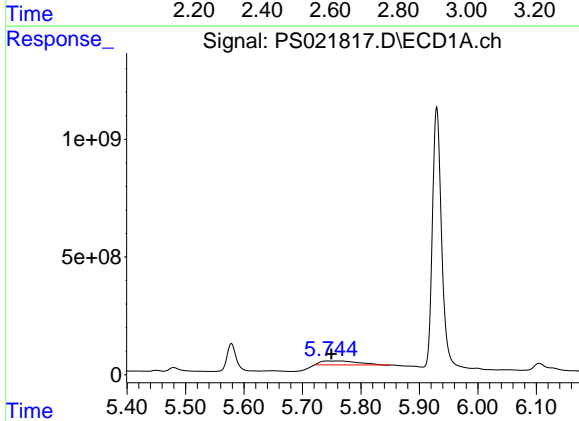
R.T.: 2.435 min
 Delta R.T.: -0.045 min
 Response: 132131127
 Conc: 46.71 ng/ml

Instrument :
 ECD_S
 ClientSampleId :



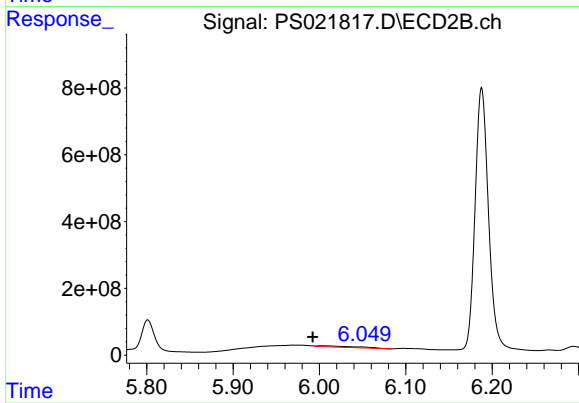
#1 Dalapon

R.T.: 2.561 min
 Delta R.T.: 0.004 min
 Response: 368486878
 Conc: 143.14 ng/ml



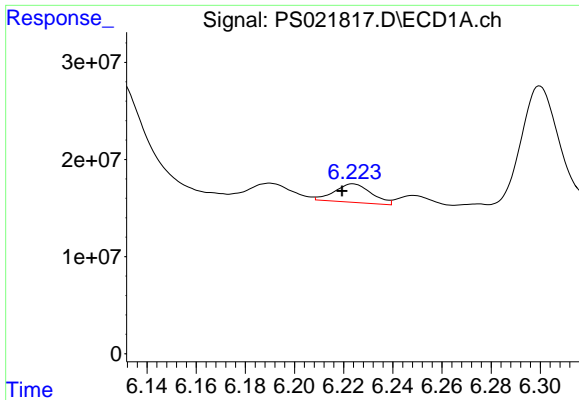
#2 3,5-DICHLOROBENZOIC ACID

R.T.: 5.744 min
 Delta R.T.: -0.006 min
 Response: 734375646
 Conc: 189.85 ng/ml



#2 3,5-DICHLOROBENZOIC ACID

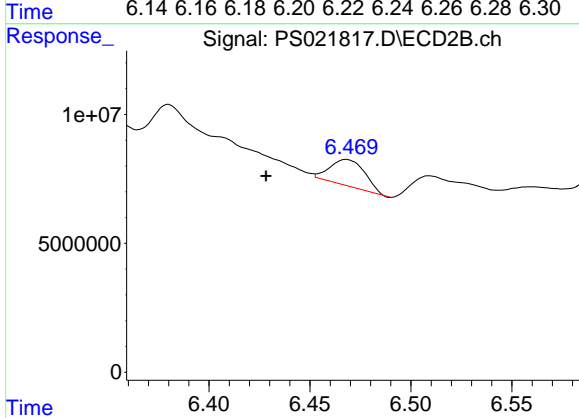
R.T.: 6.003 min
 Delta R.T.: 0.011 min
 Response: 107382278
 Conc: 38.97 ng/ml



#3 4-Nitrophenol

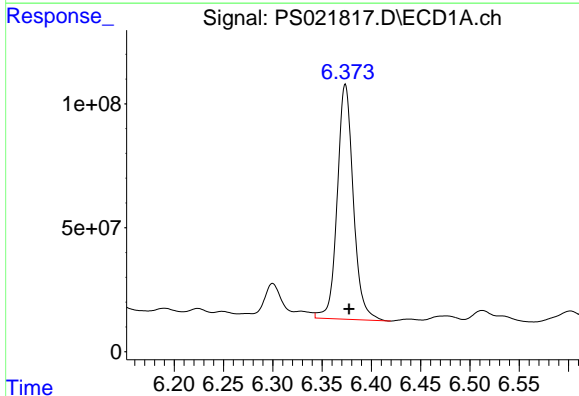
R.T.: 6.224 min
 Delta R.T.: 0.005 min
 Response: 19926604
 Conc: 13.67 ng/ml

Instrument :
 ECD_S
 ClientSampleId :



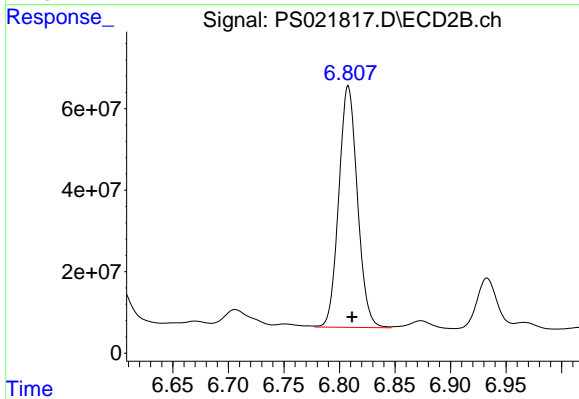
#3 4-Nitrophenol

R.T.: 6.468 min
 Delta R.T.: 0.040 min
 Response: 12227714
 Conc: 11.15 ng/ml



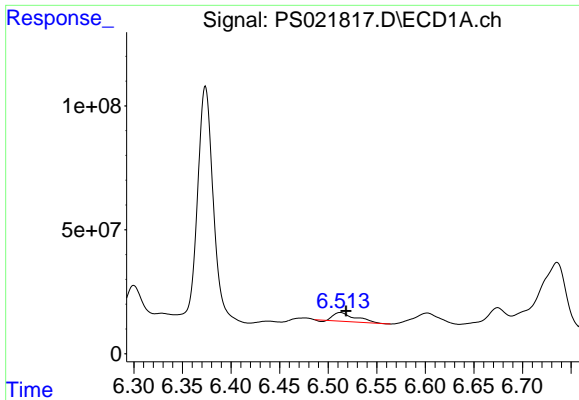
#4 2,4-DCAA

R.T.: 6.374 min
 Delta R.T.: -0.004 min
 Response: 1075907773
 Conc: 386.52 ng/ml



#4 2,4-DCAA

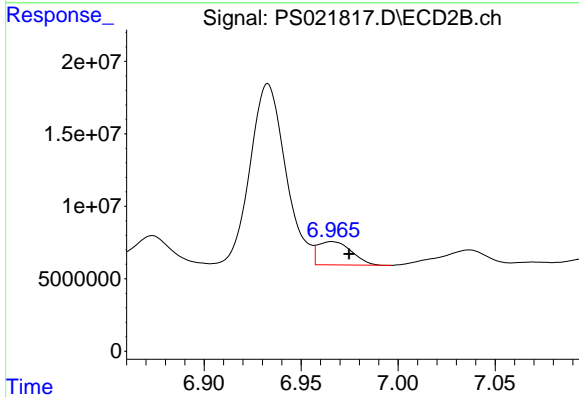
R.T.: 6.808 min
 Delta R.T.: -0.003 min
 Response: 692433008
 Conc: 385.39 ng/ml



#5 DICAMBA

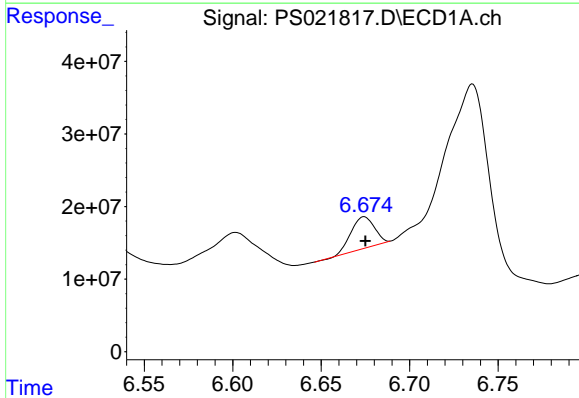
R.T.: 6.513 min
 Delta R.T.: -0.006 min
 Response: 54481125
 Conc: 4.46 ng/ml

Instrument :
 ECD_S
 ClientSampleId :



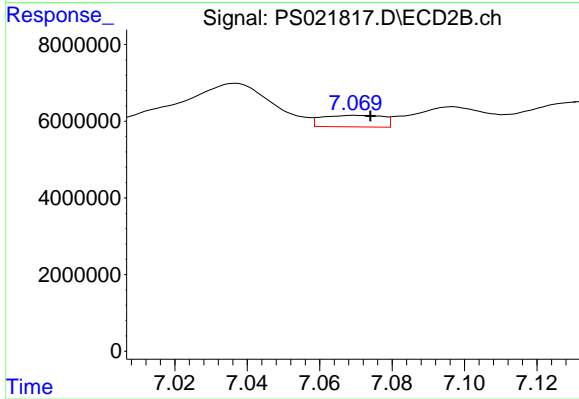
#5 DICAMBA

R.T.: 6.966 min
 Delta R.T.: -0.009 min
 Response: 19318500
 Conc: 2.27 ng/ml



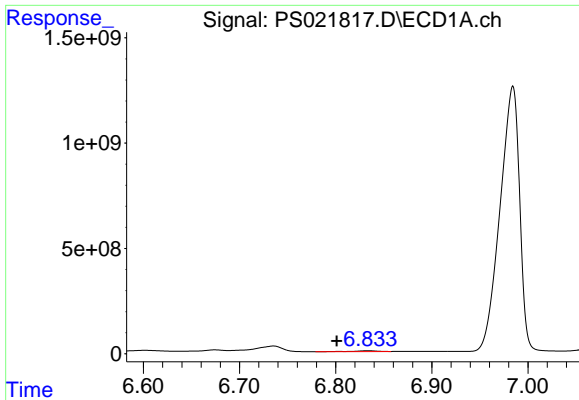
#6 MCP

R.T.: 6.674 min
 Delta R.T.: 0.000 min
 Response: 39849658
 Conc: 4.16 ug/ml



#6 MCP

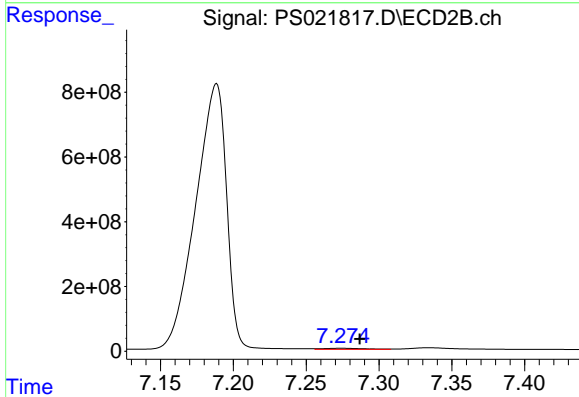
R.T.: 7.070 min
 Delta R.T.: -0.004 min
 Response: 3490146
 Conc: N.D.



#7 MCPA

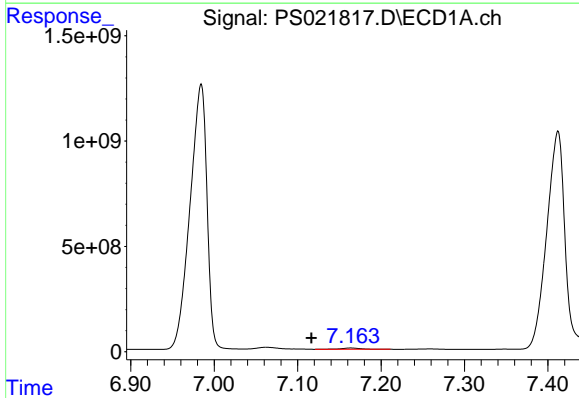
R.T.: 6.833 min
 Delta R.T.: 0.032 min
 Response: 79559485
 Conc: 6.16 ug/ml

Instrument :
 ECD_S
 ClientSampleId :



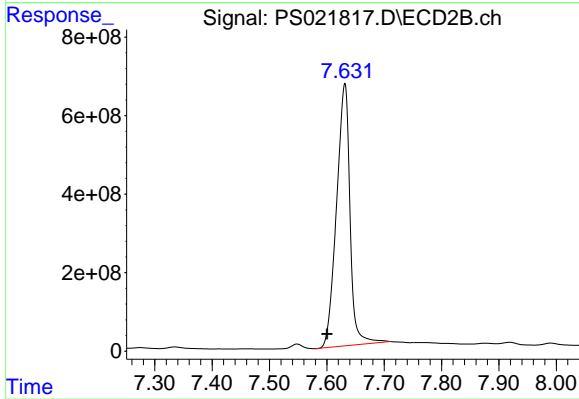
#7 MCPA

R.T.: 7.274 min
 Delta R.T.: -0.013 min
 Response: 72370157
 Conc: 7.98 ug/ml



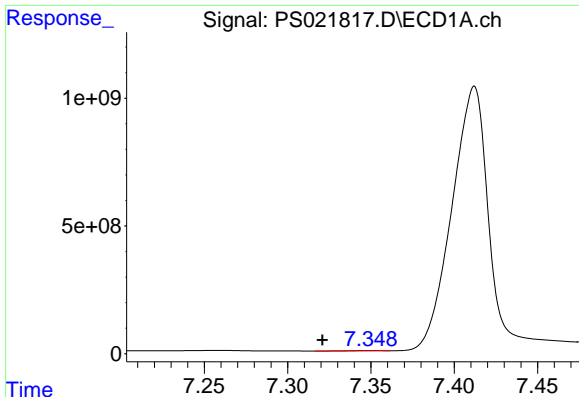
#8 DICHLORPROP

R.T.: 7.164 min
 Delta R.T.: 0.047 min
 Response: 28519065
 Conc: 8.84 ng/ml



#8 DICHLORPROP

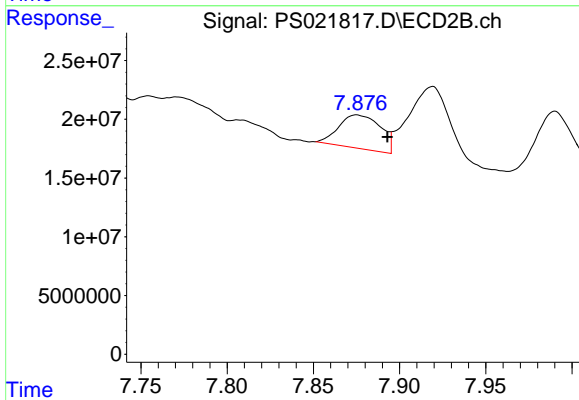
R.T.: 7.631 min
 Delta R.T.: 0.031 min
 Response: 10907389154
 Conc: 5112.36 ng/ml



#9 2,4-D

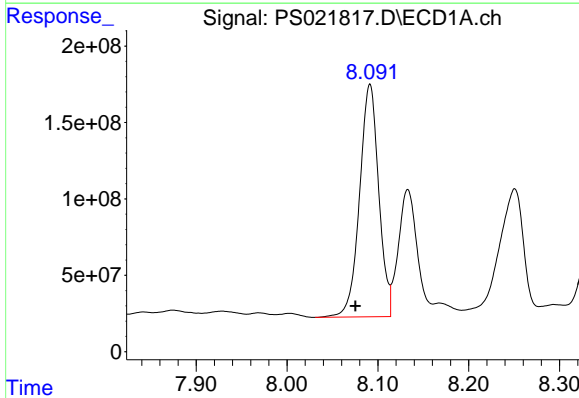
R.T.: 7.349 min
 Delta R.T.: 0.028 min
 Response: 6310059
 Conc: 1.62 ng/ml

Instrument :
 ECD_S
 ClientSampleId :



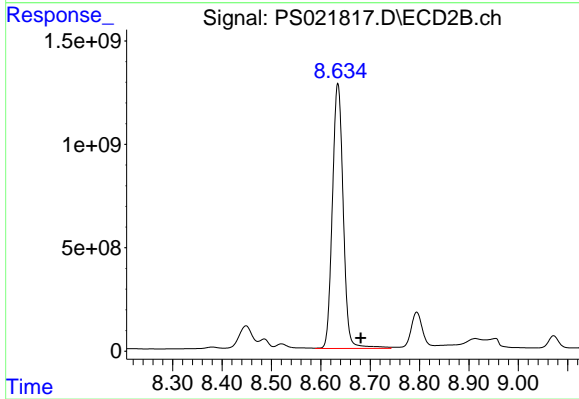
#9 2,4-D

R.T.: 7.875 min
 Delta R.T.: -0.018 min
 Response: 48432936
 Conc: 19.17 ng/ml



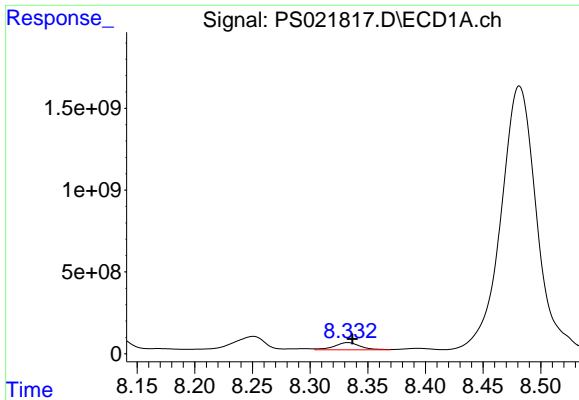
#11 2,4,5-TP (SILVEX)

R.T.: 8.091 min
 Delta R.T.: 0.016 min
 Response: 2230593831
 Conc: 121.06 ng/ml



#11 2,4,5-TP (SILVEX)

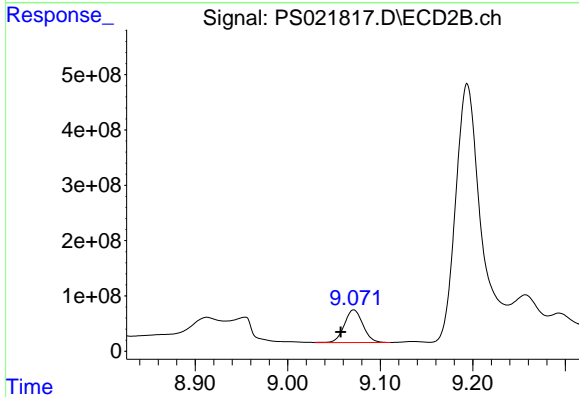
R.T.: 8.635 min
 Delta R.T.: -0.046 min
 Response: 19578863308
 Conc: 1646.62 ng/ml



#12 2,4,5-T

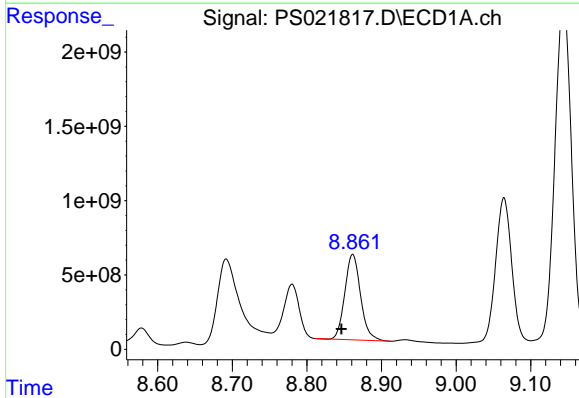
R.T.: 8.333 min
 Delta R.T.: -0.004 min
 Response: 679618320
 Conc: 35.26 ng/ml

Instrument :
 ECD_S
 ClientSampleId :



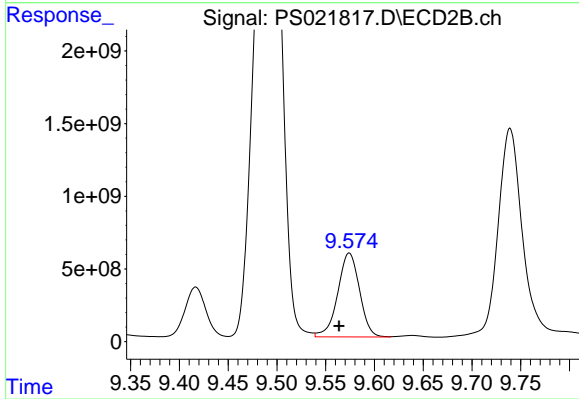
#12 2,4,5-T

R.T.: 9.071 min
 Delta R.T.: 0.014 min
 Response: 828301548
 Conc: 74.15 ng/ml



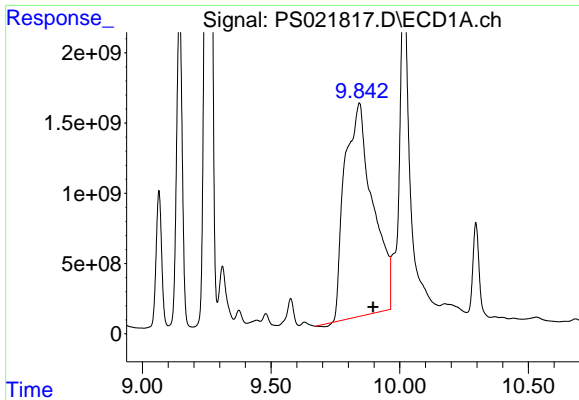
#13 2,4-DB

R.T.: 8.861 min
 Delta R.T.: 0.015 min
 Response: 8446128493
 Conc: 2668.24 ng/ml



#13 2,4-DB

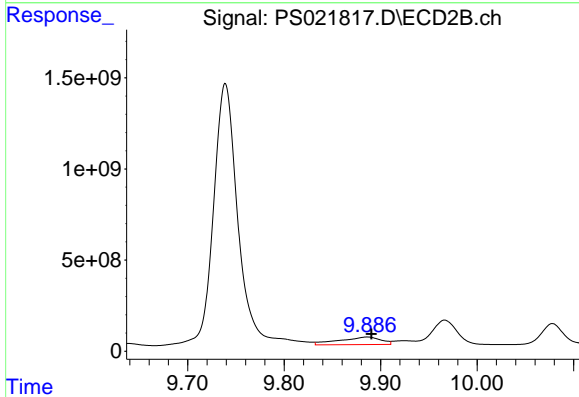
R.T.: 9.574 min
 Delta R.T.: 0.011 min
 Response: 9000018652
 Conc: 6006.99 ng/ml



#14 DINOSEB

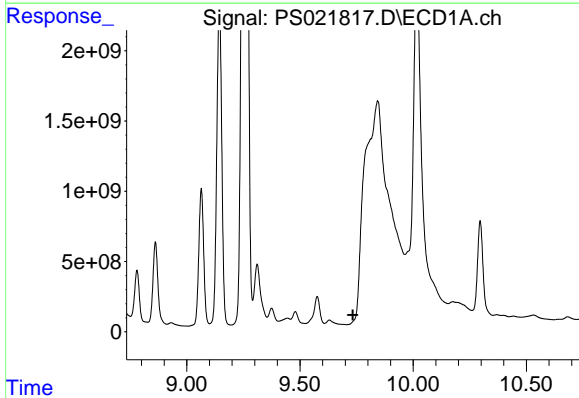
R.T.: 9.843 min
 Delta R.T.: -0.053 min
 Response: 1.14591e+011
 Conc: 6981.46 ng/m

Instrument :
 ECD_S
 ClientSampleId :



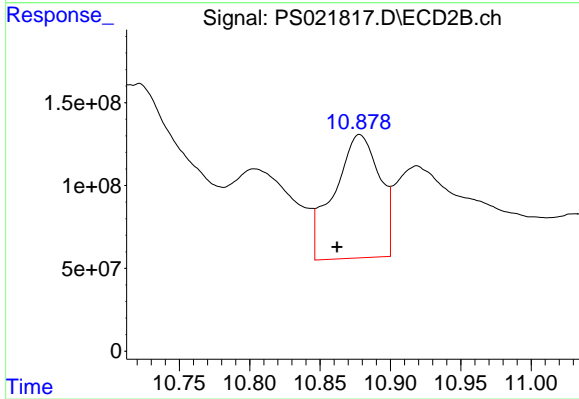
#14 DINOSEB

R.T.: 9.886 min
 Delta R.T.: -0.004 min
 Response: 1236479732
 Conc: 148.78 ng/ml



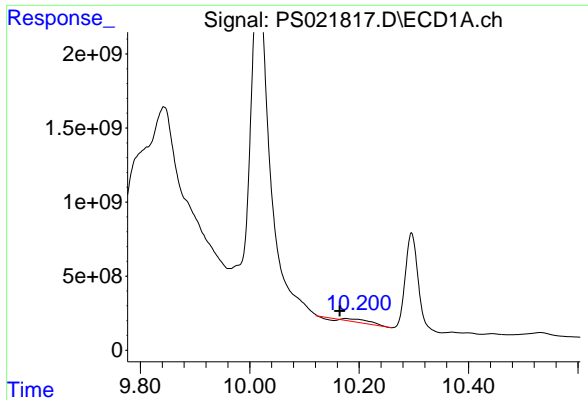
#15 Picloram

R.T.: 0.000 min
 Exp R.T. : 9.734 min
 Response: 0
 Conc: N.D.



#15 Picloram

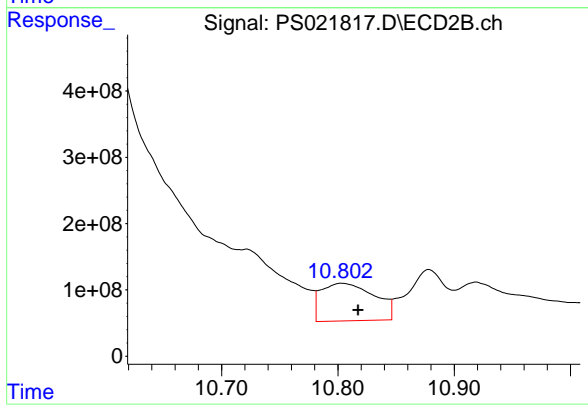
R.T.: 10.878 min
 Delta R.T.: 0.016 min
 Response: 1669590314
 Conc: 94.28 ng/ml



#16 DCPA

R.T.: 10.175 min
 Delta R.T.: 0.011 min
 Response: 571084528
 Conc: 23.12 ng/ml

Instrument :
 ECD_S
 ClientSampleId :



#16 DCPA

R.T.: 10.803 min
 Delta R.T.: -0.014 min
 Response: 1805544814
 Conc: 129.52 ng/ml