

Data Path : Z:\pestpcbsrv\HPCHEM1\ECD_S\Data\PS011923\
 Data File : PS021820.D
 Signal(s) : Signal #1: ECD1A.ch Signal #2: ECD2B.ch
 Acq On : 20 Jan 2023 00:44
 Operator : AR\AJ
 Sample : I.BLK
 Misc :
 ALS Vial : 2 Sample Multiplier: 1

Instrument :
 ECD_S
 ClientSampleId :

Integration File signal 1: autoint1.e
 Integration File signal 2: autoint2.e
 Quant Time: Jan 20 03:30:23 2023
 Quant Method : Z:\pestpcbsrv\HPCHEM1\ECD_S\Method\PS010923.M
 Quant Title : 8080.M
 QLast Update : Tue Jan 10 10:34:52 2023
 Response via : Initial Calibration
 Integrator: ChemStation

Volume Inj. : 2 µl
 Signal #1 Phase : Rtx-CLPesticides Signal #2 Phase: Rtx-CLPesticides2
 Signal #1 Info : 30M x 0.32mm x0.5 Signal #2 Info : 30M x 0.32mm x 0.25µm

	Compound	RT#1	RT#2	Resp#1	Resp#2	ng/ml	ng/ml

System Monitoring Compounds							
4) S	2,4-DCAA	6.376	6.809	1582.6E6	1102.8E6	568.550	613.802
Target Compounds							
1) T	Dalapon	2.518	0.000	705713	0	<MDL	N.D. #
2) T	3,5-DICHL...	0.000	6.016	0	953415	N.D.	<MDL
3) T	4-Nitroph...	6.220	0.000	6313039	0	4.331	N.D. #
5) T	DICAMBA	0.000	7.031f	0	6152954	N.D.	<MDL
6) T	MCP P	0.000	7.031f	0	6152954	N.D.	<MDL
7) T	MCPA	6.746f	0.000	9964303	0	<MDL	N.D. #
8) T	DICHLORPROP	7.108	7.618	379090	33883295	<MDL	15.881 #
9) T	2,4-D	7.298	7.850f	8681183	2913939	2.235	1.153 #
10) T	Pentachlo...	7.533	8.358	756367	4809405	<MDL	<MDL #
11) T	2,4,5-TP ...	8.096	8.714	65624280	10001726	3.561	<MDL #
12) T	2,4,5-T	8.364	9.070	41343308	7590342	2.145	<MDL #
13) T	2,4-DB	8.863	9.576	941167	2932886	<MDL	1.958 #
14) T	DINOSEB	9.850f	9.900	48977672	1955586	2.984	<MDL #
15) T	Picloram	9.719	10.914f	18249780	27051060	<MDL	1.528 #
16) T	DCPA	10.162	0.000	1387911	0	<MDL	N.D. #

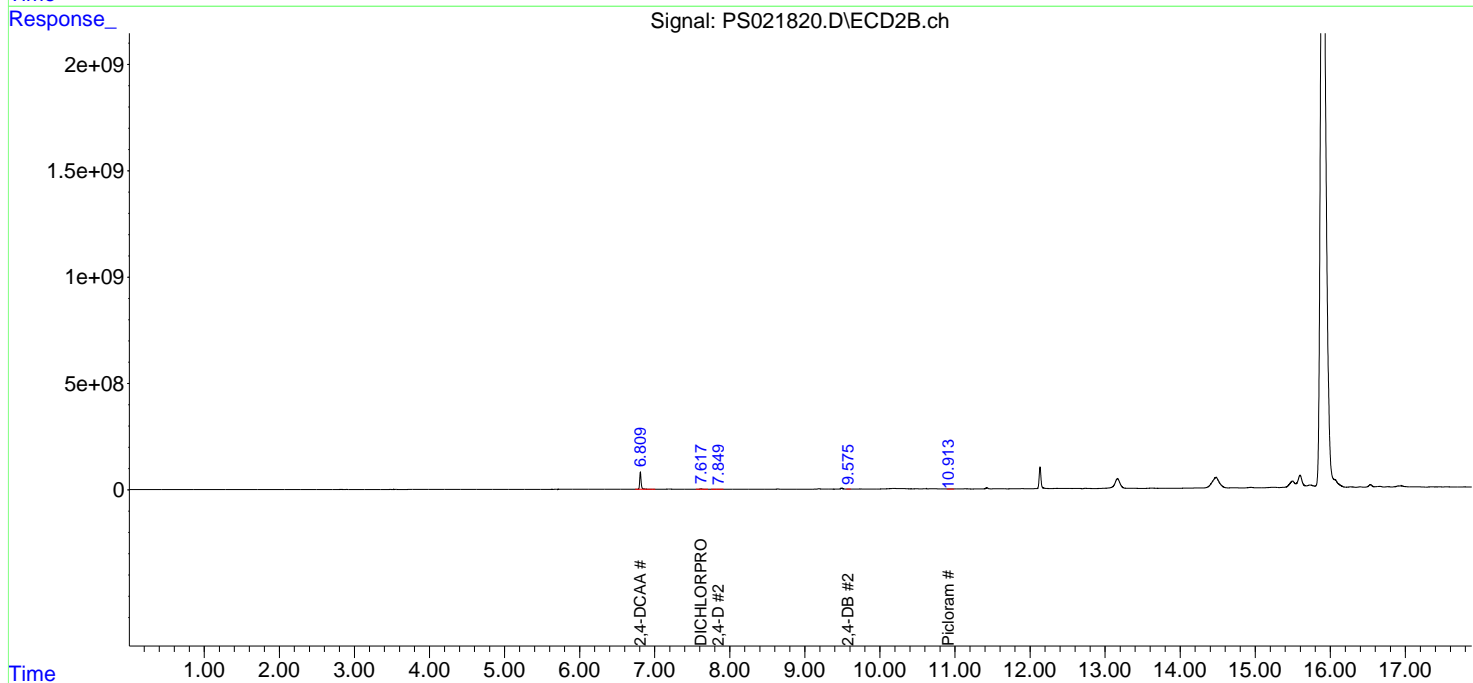
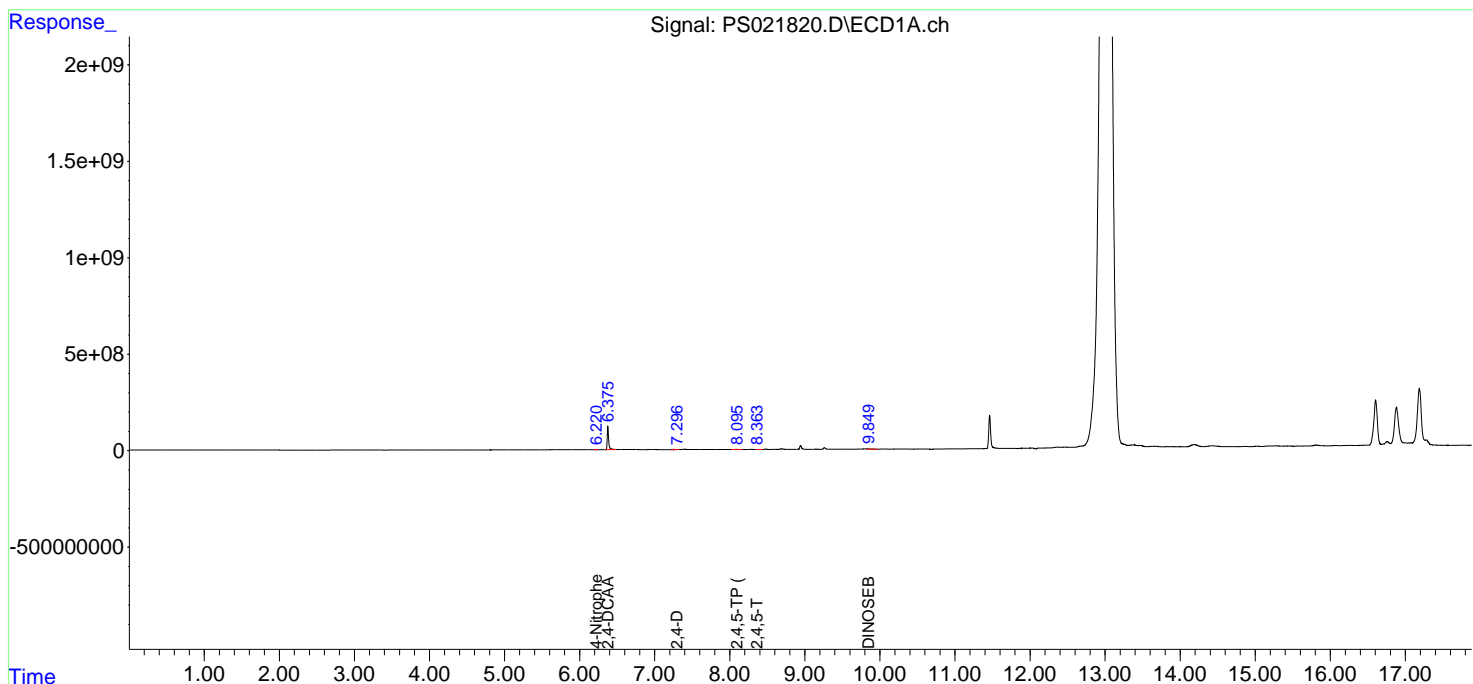
(f)=RT Delta > 1/2 Window (#)=Amounts differ by > 25% (m)=manual int.

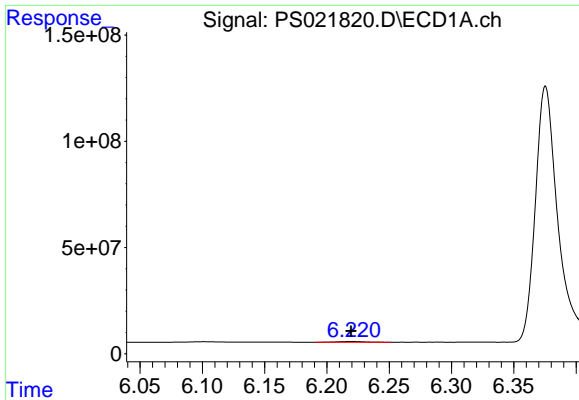
Data Path : Z:\pestpcbsrv\HPCHEM1\ECD_S\Data\PS011923\
 Data File : PS021820.D
 Signal(s) : Signal #1: ECD1A.ch Signal #2: ECD2B.ch
 Acq On : 20 Jan 2023 00:44
 Operator : AR\AJ
 Sample : I.BLK
 Misc :
 ALS Vial : 2 Sample Multiplier: 1

Instrument :
 ECD_S
 ClientSampleId :

Integration File signal 1: autoint1.e
 Integration File signal 2: autoint2.e
 Quant Time: Jan 20 03:30:23 2023
 Quant Method : Z:\pestpcbsrv\HPCHEM1\ECD_S\Method\PS010923.M
 Quant Title : 8080.M
 QLast Update : Tue Jan 10 10:34:52 2023
 Response via : Initial Calibration
 Integrator: ChemStation

Volume Inj. : 2 µl
 Signal #1 Phase : Rtx-CLPesticides Signal #2 Phase: Rtx-CLPesticides2
 Signal #1 Info : 30M x 0.32mm x 0.5 Signal #2 Info : 30M x 0.32mm x 0.25µm

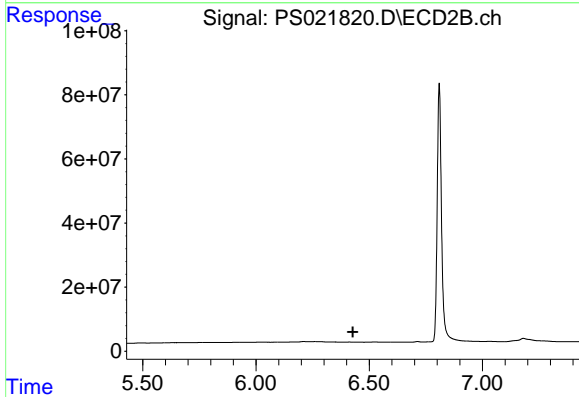




#3 4-Nitrophenol

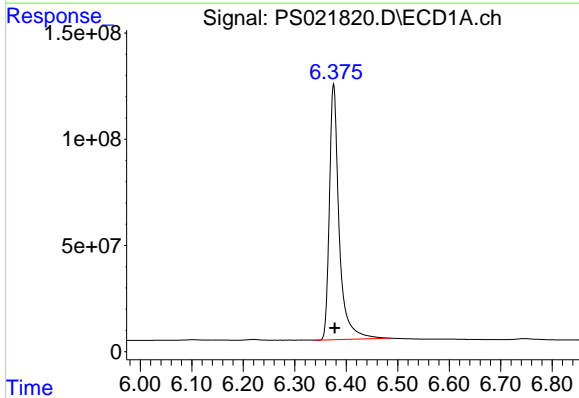
R.T.: 6.220 min
 Delta R.T.: 0.000 min
 Response: 6313039
 Conc: 4.33 ng/ml

Instrument :
 ECD_S
 ClientSampleId :



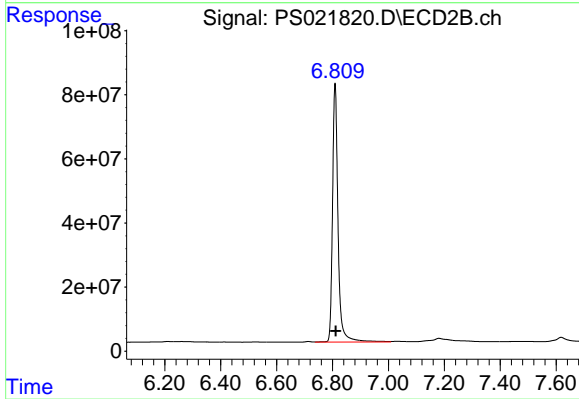
#3 4-Nitrophenol

R.T.: 0.000 min
 Exp R.T. : 6.428 min
 Response: 0
 Conc: N.D.



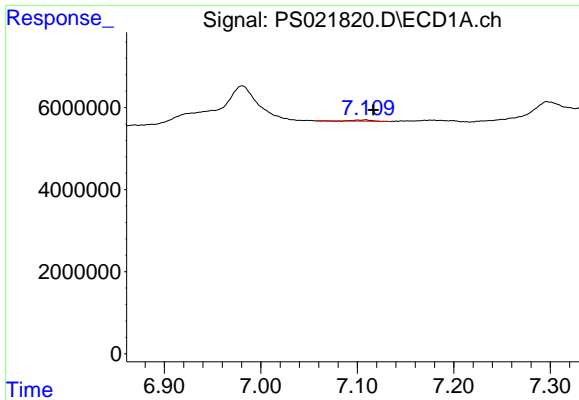
#4 2,4-DCAA

R.T.: 6.376 min
 Delta R.T.: -0.002 min
 Response: 1582596290
 Conc: 568.55 ng/ml



#4 2,4-DCAA

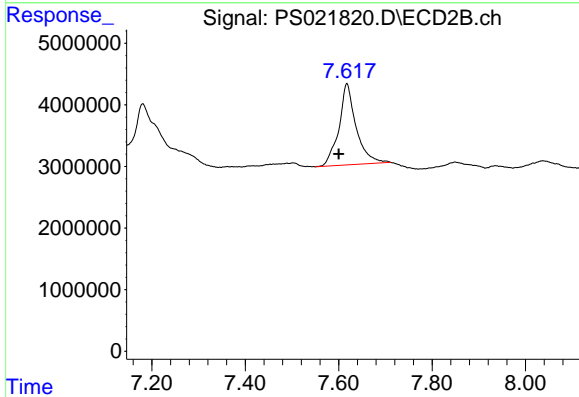
R.T.: 6.809 min
 Delta R.T.: -0.002 min
 Response: 1102810922
 Conc: 613.80 ng/ml



#8 DICHLORPROP

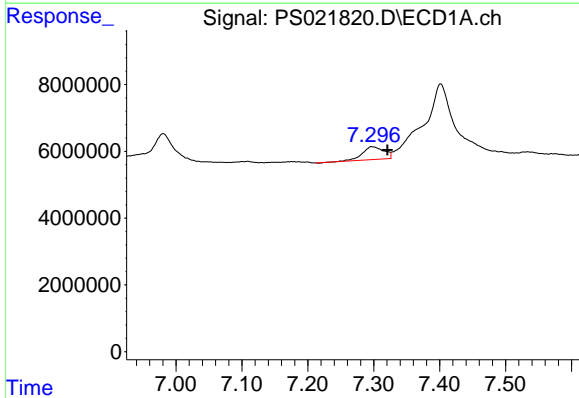
R.T.: 7.108 min
 Delta R.T.: -0.008 min
 Response: 379090
 Conc: N.D.

Instrument :
 ECD_S
 ClientSampleId :



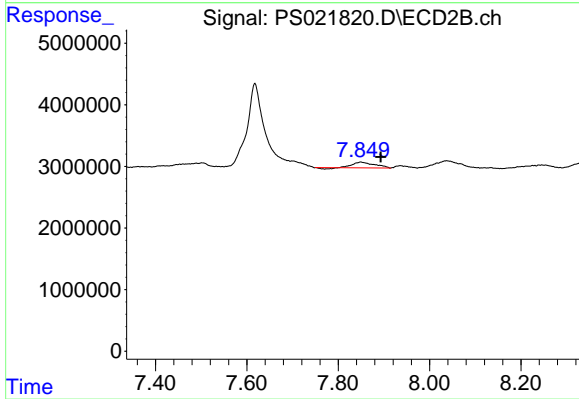
#8 DICHLORPROP

R.T.: 7.618 min
 Delta R.T.: 0.017 min
 Response: 33883295
 Conc: 15.88 ng/ml



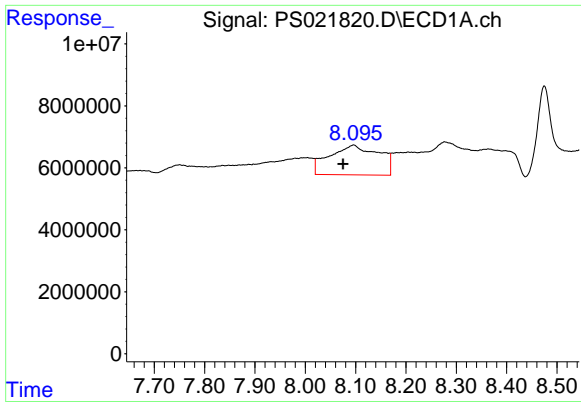
#9 2,4-D

R.T.: 7.298 min
 Delta R.T.: -0.023 min
 Response: 8681183
 Conc: 2.24 ng/ml



#9 2,4-D

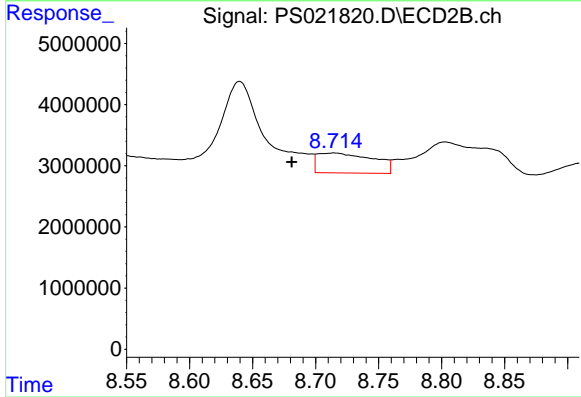
R.T.: 7.850 min
 Delta R.T.: -0.043 min
 Response: 2913939
 Conc: 1.15 ng/ml



#11 2,4,5-TP (SILVEX)

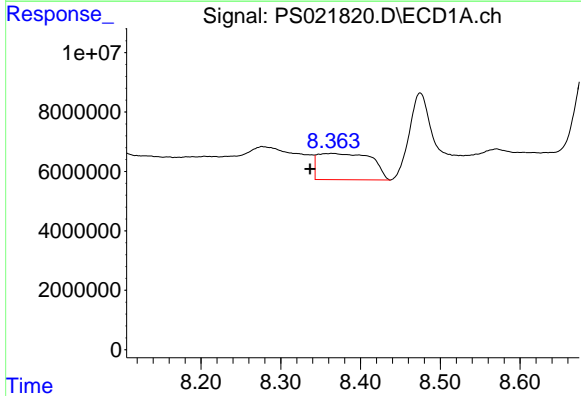
R.T.: 8.096 min
 Delta R.T.: 0.021 min
 Response: 65624280
 Conc: 3.56 ng/ml

Instrument :
 ECD_S
 ClientSampleId :



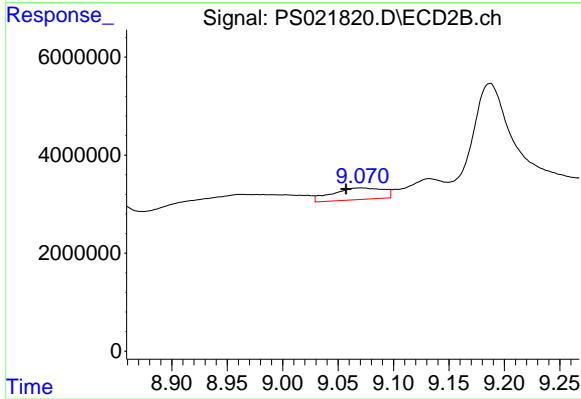
#11 2,4,5-TP (SILVEX)

R.T.: 8.714 min
 Delta R.T.: 0.034 min
 Response: 10001726
 Conc: N.D.



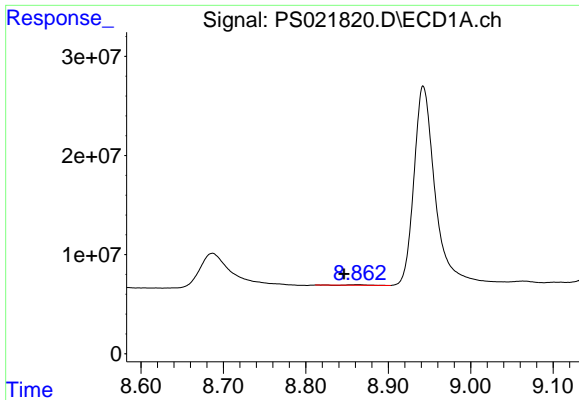
#12 2,4,5-T

R.T.: 8.364 min
 Delta R.T.: 0.028 min
 Response: 41343308
 Conc: 2.14 ng/ml



#12 2,4,5-T

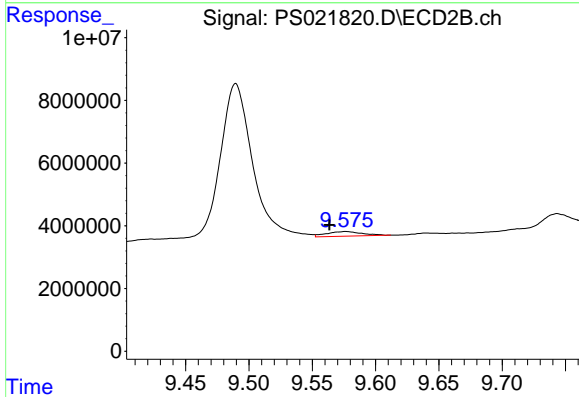
R.T.: 9.070 min
 Delta R.T.: 0.013 min
 Response: 7590342
 Conc: N.D.



#13 2,4-DB

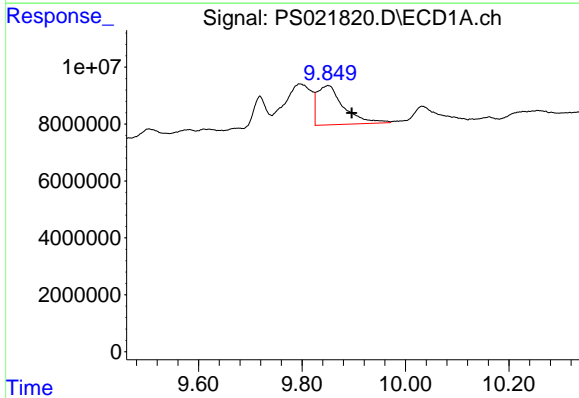
R.T.: 8.863 min
 Delta R.T.: 0.016 min
 Response: 941167
 Conc: N.D.

Instrument :
 ECD_S
 ClientSampleId :



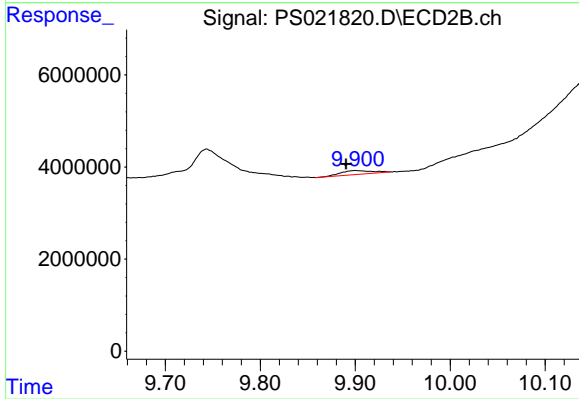
#13 2,4-DB

R.T.: 9.576 min
 Delta R.T.: 0.013 min
 Response: 2932886
 Conc: 1.96 ng/ml



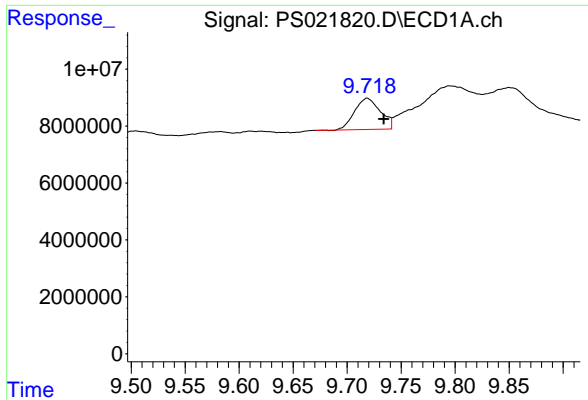
#14 DINOSEB

R.T.: 9.850 min
 Delta R.T.: -0.046 min
 Response: 48977672
 Conc: 2.98 ng/ml



#14 DINOSEB

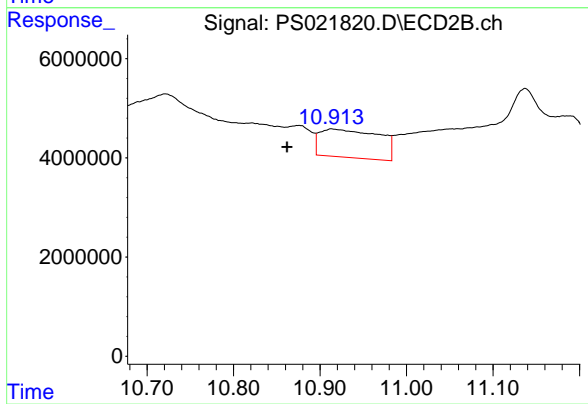
R.T.: 9.900 min
 Delta R.T.: 0.010 min
 Response: 1955586
 Conc: N.D.



#15 Picloram

R.T.: 9.719 min
Delta R.T.: -0.015 min
Response: 18249780
Conc: N.D.

Instrument :
ECD_S
ClientSampleId :



#15 Picloram

R.T.: 10.914 min
Delta R.T.: 0.052 min
Response: 27051060
Conc: 1.53 ng/ml