

Data Path : Z:\pestpcbsrv\HPCHEM1\ECD_S\Data\PS012219\
 Data File : PS002929.D
 Signal(s) : Signal #1: ECD1A.ch Signal #2: ECD2B.ch
 Acq On : 22 Jan 2019 14:37
 Operator : EI\SJ
 Sample : K1015-12
 Misc :
 ALS Vial : 142 Sample Multiplier: 1

Instrument :
 ECD_S
 ClientSampleId :
 SU-01-011719-B

Integration File signal 1: autoint1.e
 Integration File signal 2: autoint2.e
 Quant Time: Jan 22 15:34:13 2019
 Quant Method : Z:\pestpcbsrv\HPCHEM1\ECD_S\Method\PS012219.M
 Quant Title : 8080.M
 QLast Update : Tue Jan 22 12:56:17 2019
 Response via : Initial Calibration
 Integrator: ChemStation

Volume Inj. : 2 µl
 Signal #1 Phase : Rtx-CLPesticides Signal #2 Phase: Rtx-CLPesticides2
 Signal #1 Info : 30M x 0.32mm x0.5 Signal #2 Info : 30M x 0.32mm x 0.25µm

Compound	RT#1	RT#2	Resp#1	Resp#2	ng/ml	ng/ml

System Monitoring Compounds						
4) S 2,4-DCAA	11.302	10.801	186.5E6	175.6E6	527.187	453.989
Target Compounds						
1) T Dalapon	2.817	2.306	30795446	94054989	63.319	186.416 #
2) T 3,5-DICHL...	0.000	8.967	0	7292215	N.D.	14.912 #
6) T MCPP	11.963	0.000	45501643	0	43.783	N.D. #
7) T MCPA	12.162	11.749	10832722	169.3E6	6.843	103.869 #
9) T 2,4-D	0.000	12.765	0	6462514	N.D.	14.195 #
10) T Pentachlo...	13.530	13.215	7453659	3342206	1.280	0.575 #
12) T 2,4,5-T	0.000	14.373	0	7718248	N.D.	4.422 #
13) T 2,4-DB	15.575	0.000	27957835	0	108.013	N.D. #
14) T DINOSEB	0.000	15.510	0	17299438	N.D.	10.202 #
15) T Picloram	16.795	16.718	4175941	30093309	1.415	9.558 #
16) T DCPA	0.000	16.718	0	30093309	N.D.	10.146 #

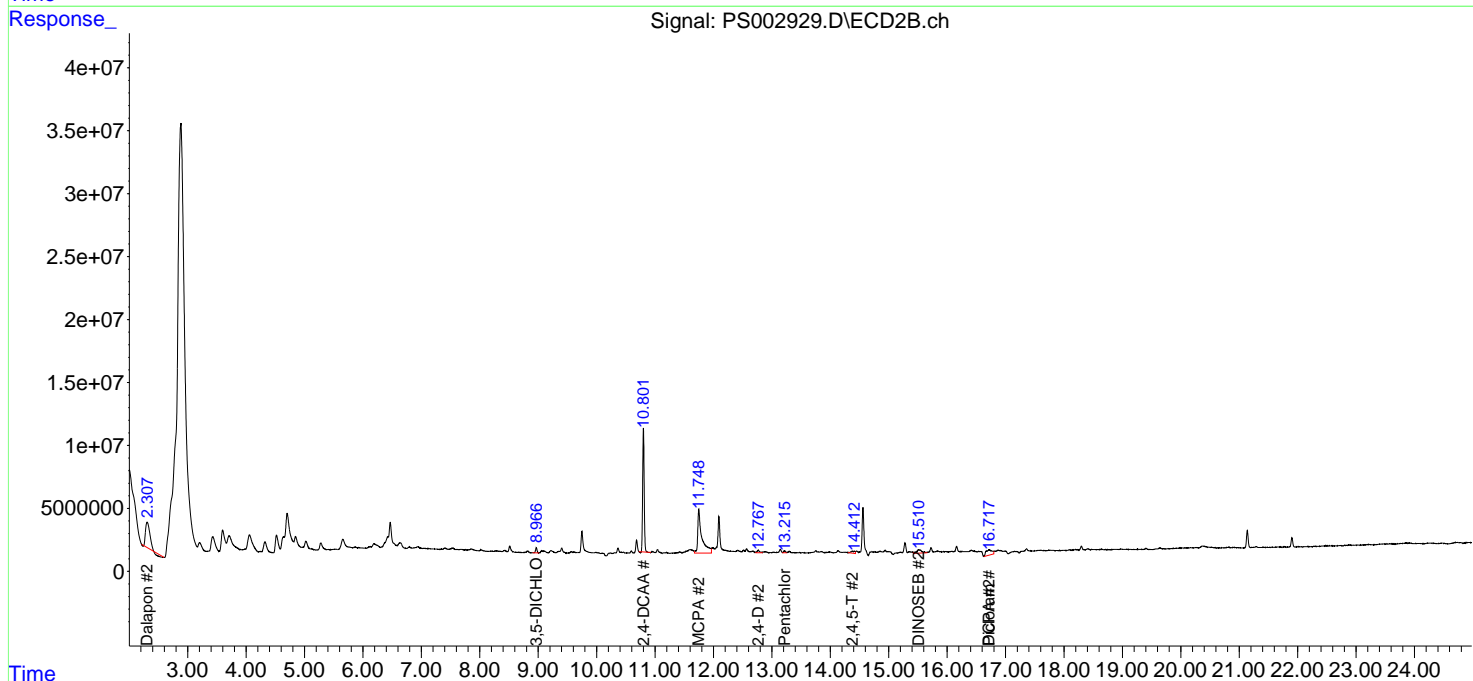
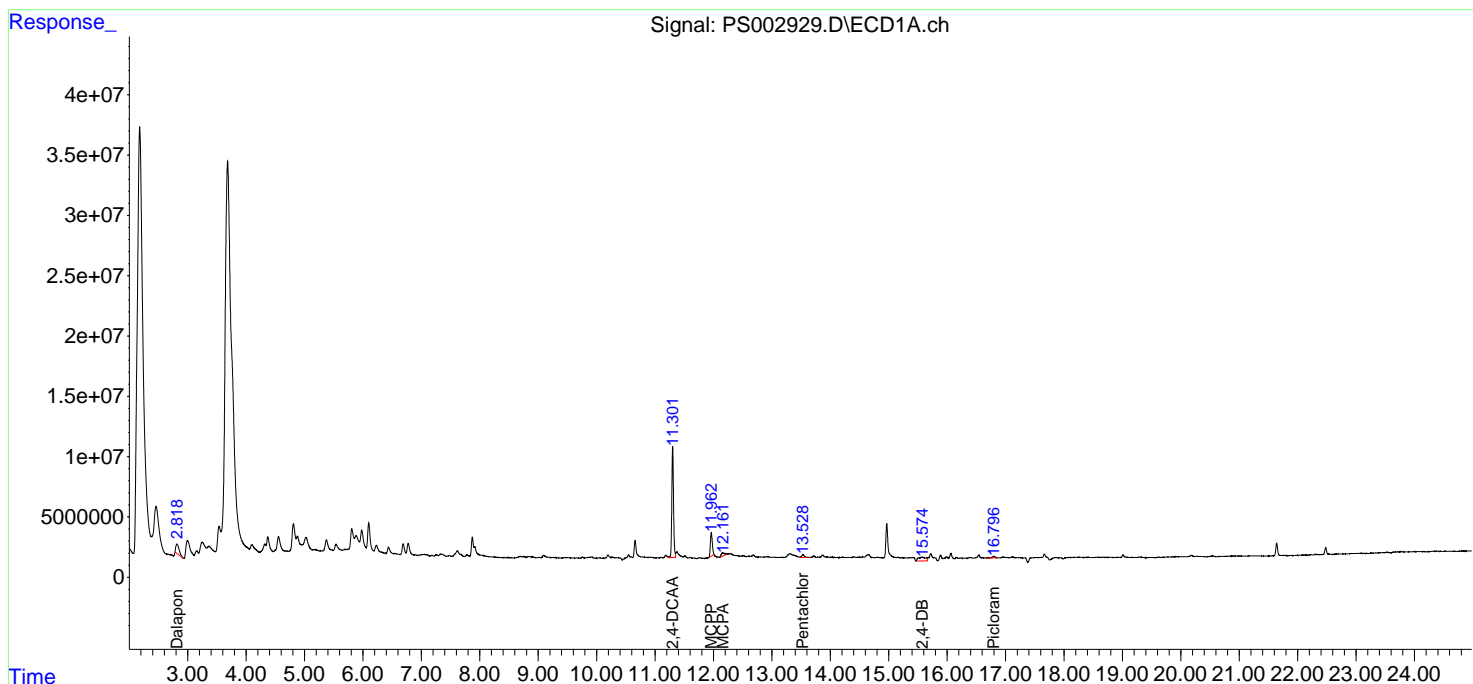
(f)=RT Delta > 1/2 Window (#)=Amounts differ by > 25% (m)=manual int.

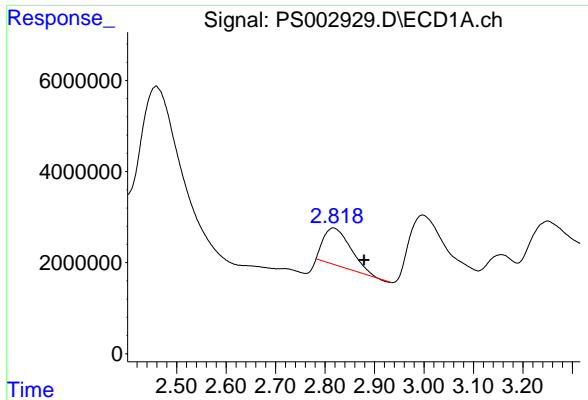
Data Path : Z:\pestpcbsrv\HPCHEM1\ECD_S\Data\PS012219\
 Data File : PS002929.D
 Signal(s) : Signal #1: ECD1A.ch Signal #2: ECD2B.ch
 Acq On : 22 Jan 2019 14:37
 Operator : EI\SJ
 Sample : K1015-12
 Misc :
 ALS Vial : 142 Sample Multiplier: 1

Instrument :
 ECD_S
 ClientSampleId :
 SU-01-011719-B

Integration File signal 1: autoint1.e
 Integration File signal 2: autoint2.e
 Quant Time: Jan 22 15:34:13 2019
 Quant Method : Z:\pestpcbsrv\HPCHEM1\ECD_S\Method\PS012219.M
 Quant Title : 8080.M
 QLast Update : Tue Jan 22 12:56:17 2019
 Response via : Initial Calibration
 Integrator: ChemStation

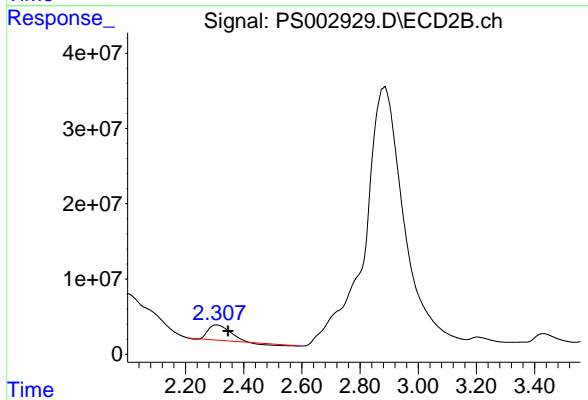
Volume Inj. : 2 µl
 Signal #1 Phase : Rtx-CLPesticides Signal #2 Phase: Rtx-CLPesticides2
 Signal #1 Info : 30M x 0.32mm x 0.5 Signal #2 Info : 30M x 0.32mm x 0.25µm



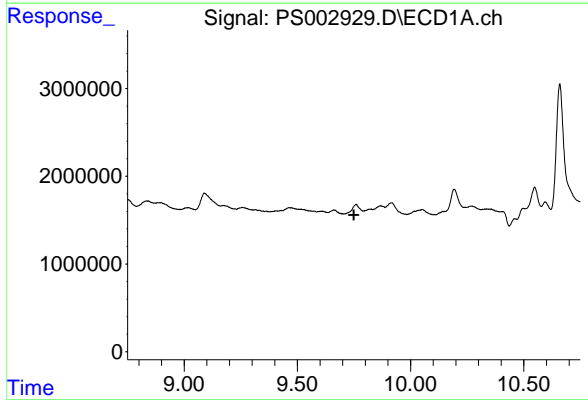


#1 Dalapon
 R.T.: 2.817 min
 Delta R.T.: -0.062 min
 Response: 30795446
 Conc: 63.32 ng/ml

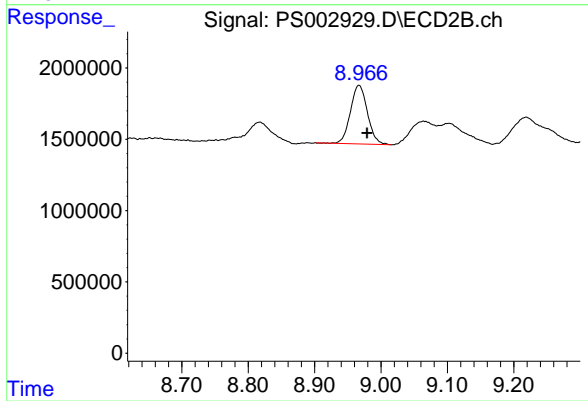
Instrument :
 ECD_S
 ClientSampleId :
 SU-01-011719-B



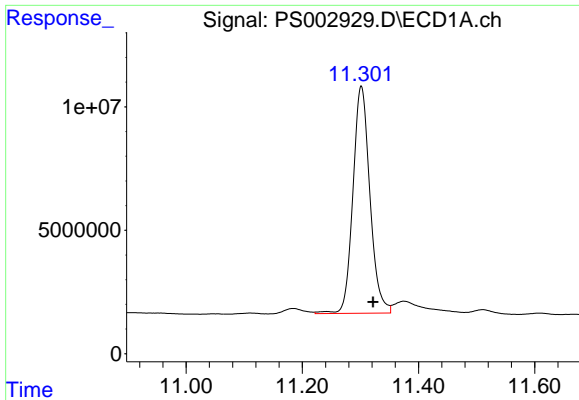
#1 Dalapon
 R.T.: 2.306 min
 Delta R.T.: -0.040 min
 Response: 94054989
 Conc: 186.42 ng/ml



#2 3,5-DICHLOROBENZOIC ACID
 R.T.: 0.000 min
 Exp R.T. : 9.749 min
 Response: 0
 Conc: N.D.



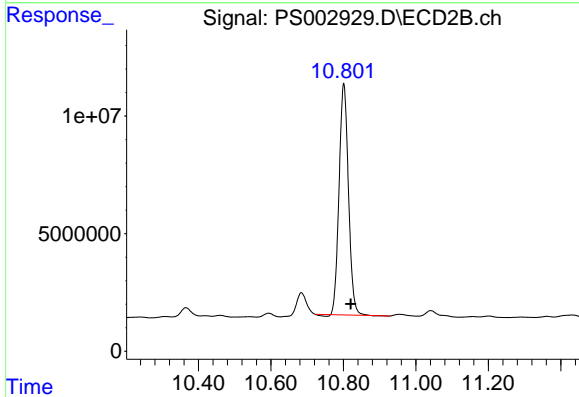
#2 3,5-DICHLOROBENZOIC ACID
 R.T.: 8.967 min
 Delta R.T.: -0.012 min
 Response: 7292215
 Conc: 14.91 ng/ml



#4 2,4-DCAA

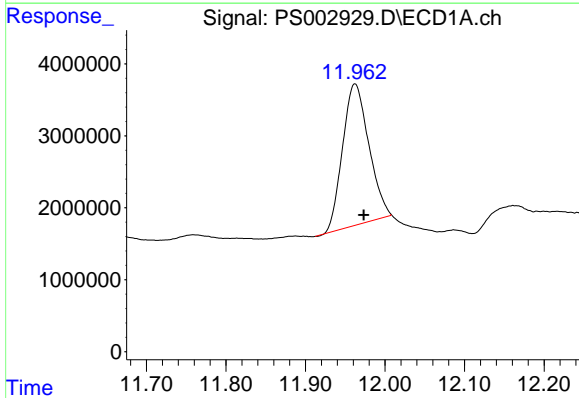
R.T.: 11.302 min
 Delta R.T.: -0.021 min
 Response: 186541013
 Conc: 527.19 ng/ml

Instrument :
 ECD_S
 ClientSampleId :
 SU-01-011719-B



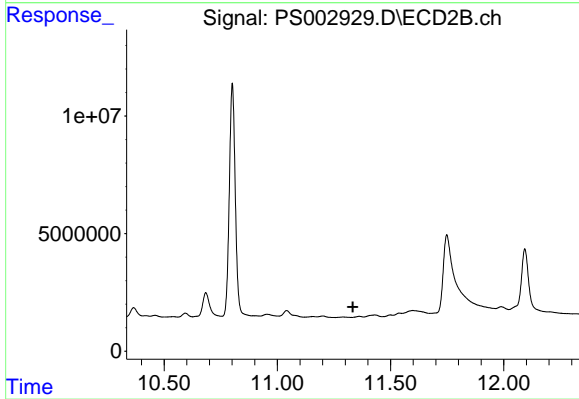
#4 2,4-DCAA

R.T.: 10.801 min
 Delta R.T.: -0.019 min
 Response: 175593378
 Conc: 453.99 ng/ml



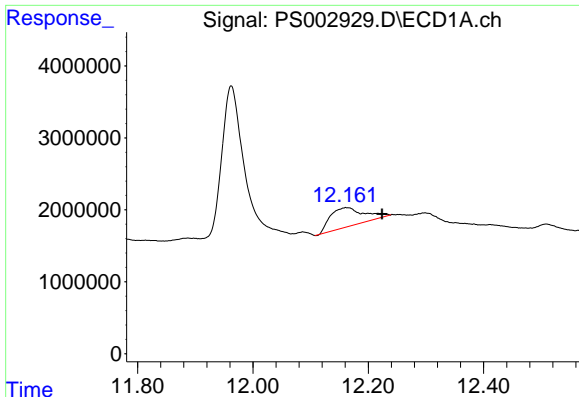
#6 MCPP

R.T.: 11.963 min
 Delta R.T.: -0.011 min
 Response: 45501643
 Conc: 43.78 ug/ml



#6 MCPP

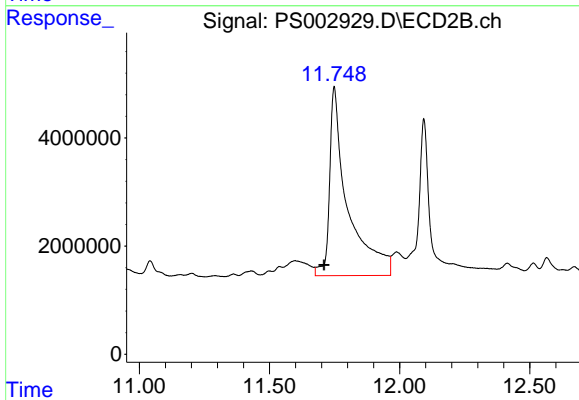
R.T.: 0.000 min
 Exp R.T. : 11.334 min
 Response: 0
 Conc: N.D.



#7 MCPA

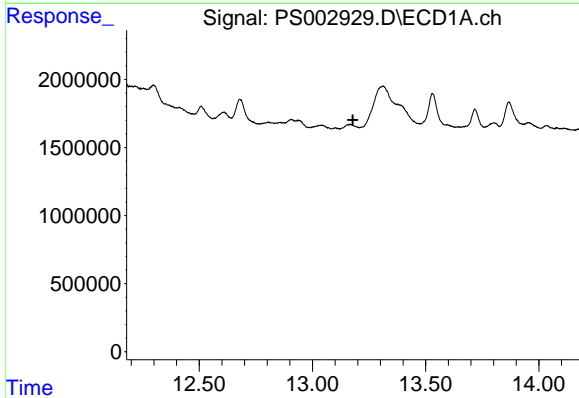
R.T.: 12.162 min
 Delta R.T.: -0.062 min
 Response: 10832722
 Conc: 6.84 ug/ml

Instrument :
 ECD_S
 ClientSampleId :
 SU-01-011719-B



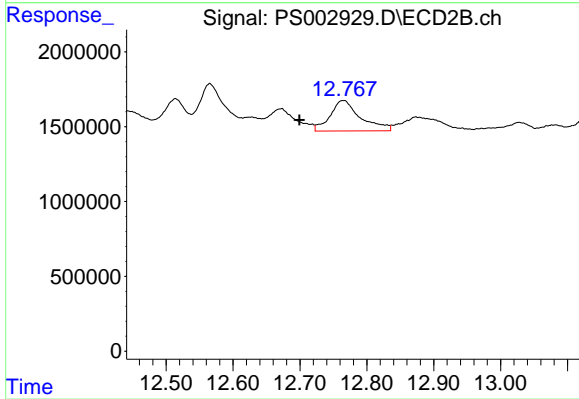
#7 MCPA

R.T.: 11.749 min
 Delta R.T.: 0.040 min
 Response: 169339554
 Conc: 103.87 ug/ml



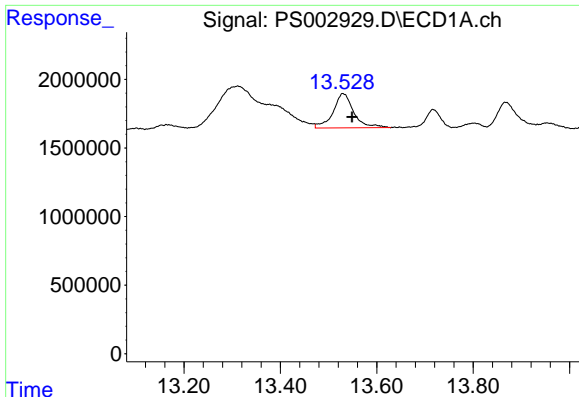
#9 2,4-D

R.T.: 0.000 min
 Exp R.T. : 13.179 min
 Response: 0
 Conc: N.D.



#9 2,4-D

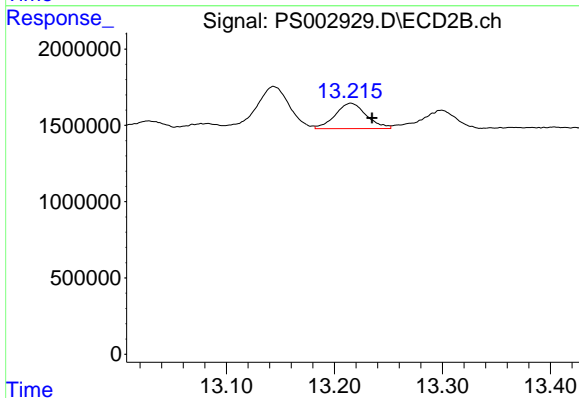
R.T.: 12.765 min
 Delta R.T.: 0.066 min
 Response: 6462514
 Conc: 14.19 ng/ml



#10 Pentachlorophenol

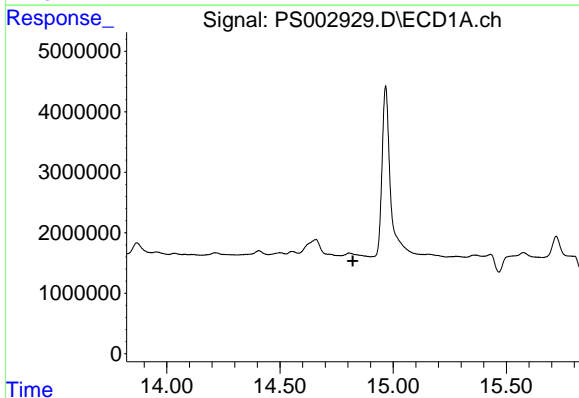
R.T.: 13.530 min
 Delta R.T.: -0.018 min
 Response: 7453659
 Conc: 1.28 ng/ml

Instrument :
 ECD_S
 ClientSampleId :
 SU-01-011719-B



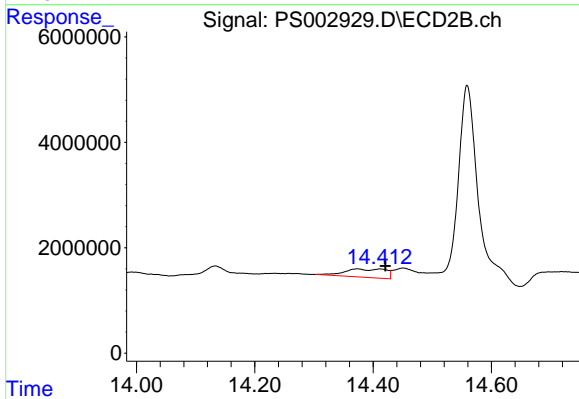
#10 Pentachlorophenol

R.T.: 13.215 min
 Delta R.T.: -0.020 min
 Response: 3342206
 Conc: 0.57 ng/ml



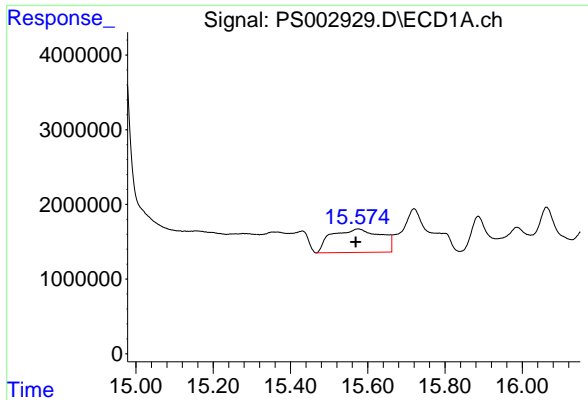
#12 2,4,5-T

R.T.: 0.000 min
 Exp R.T. : 14.822 min
 Response: 0
 Conc: N.D.



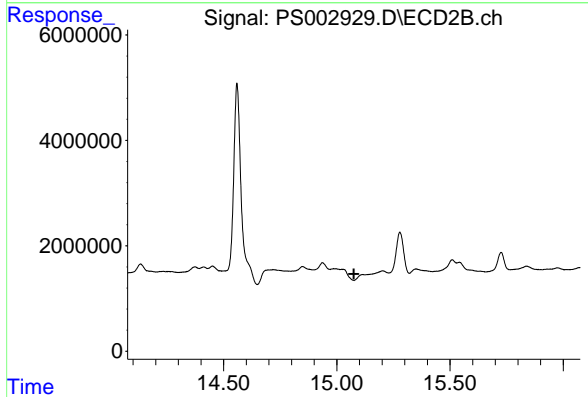
#12 2,4,5-T

R.T.: 14.373 min
 Delta R.T.: -0.048 min
 Response: 7718248
 Conc: 4.42 ng/ml

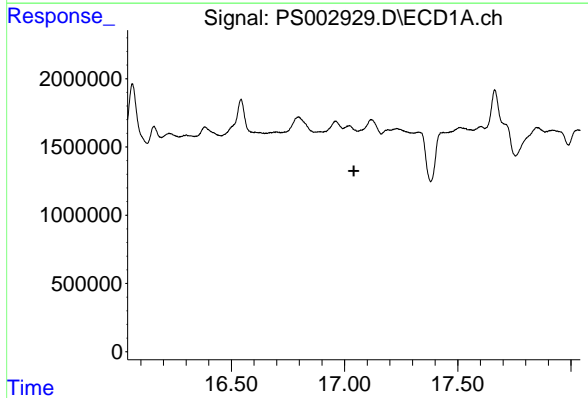


#13 2,4-DB
 R.T.: 15.575 min
 Delta R.T.: 0.006 min
 Response: 27957835
 Conc: 108.01 ng/ml

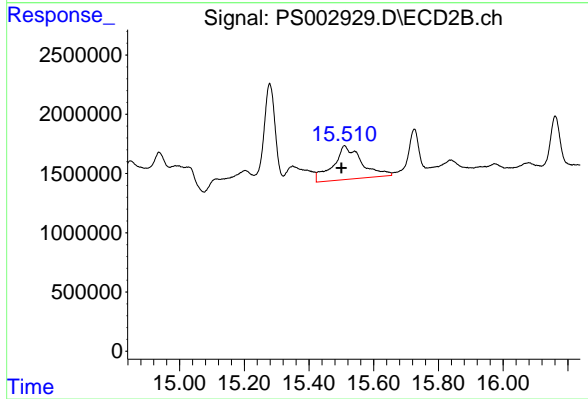
Instrument :
 ECD_S
 ClientSampled :
 SU-01-011719-B



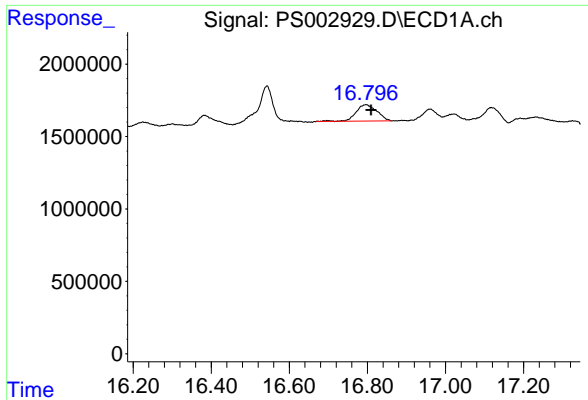
#13 2,4-DB
 R.T.: 0.000 min
 Exp R.T. : 15.075 min
 Response: 0
 Conc: N.D.



#14 DINOSEB
 R.T.: 0.000 min
 Exp R.T. : 17.041 min
 Response: 0
 Conc: N.D.

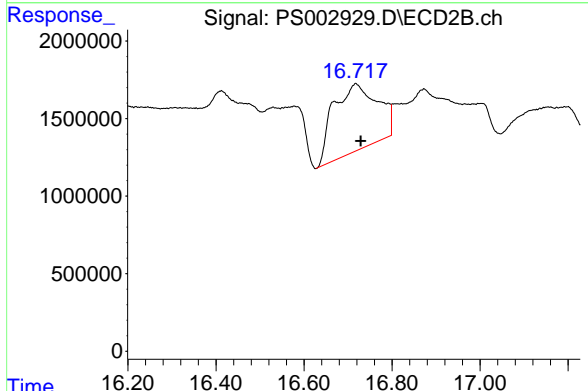


#14 DINOSEB
 R.T.: 15.510 min
 Delta R.T.: 0.010 min
 Response: 17299438
 Conc: 10.20 ng/ml

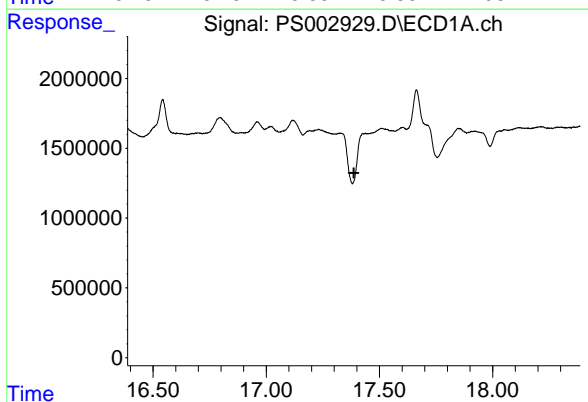


#15 Picloram
 R.T.: 16.795 min
 Delta R.T.: -0.014 min
 Response: 4175941
 Conc: 1.42 ng/ml

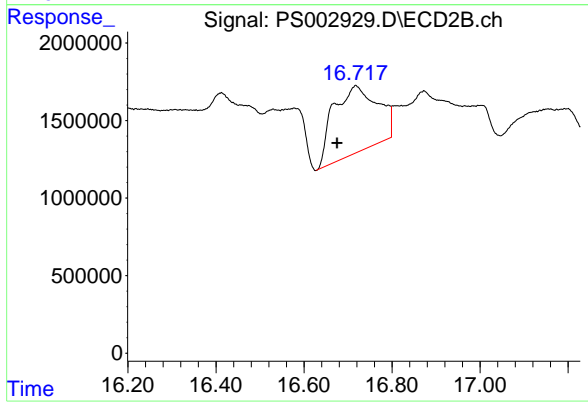
Instrument :
 ECD_S
 ClientSampleId :
 SU-01-011719-B



#15 Picloram
 R.T.: 16.718 min
 Delta R.T.: -0.011 min
 Response: 30093309
 Conc: 9.56 ng/ml



#16 DCPA
 R.T.: 0.000 min
 Exp R.T. : 17.387 min
 Response: 0
 Conc: N.D.



#16 DCPA
 R.T.: 16.718 min
 Delta R.T.: 0.043 min
 Response: 30093309
 Conc: 10.15 ng/ml