

Data Path : Z:\pestpcbsrv\HPCHEM1\ECD_S\Data\PS012220\
 Data File : PS008490.D
 Signal(s) : Signal #1: ECD1A.ch Signal #2: ECD2B.ch
 Acq On : 21 Jan 2020 16:21
 Operator : DD\AJ
 Sample : L1165-01
 Misc :
 ALS Vial : 7 Sample Multiplier: 1

Instrument :
 ECD_S
 ClientSampleId :
 QVD-GW-01-45

Integration File signal 1: autoint1.e
 Integration File signal 2: autoint2.e
 Quant Time: Jan 22 00:53:00 2020
 Quant Method : Z:\pestpcbsrv\HPCHEM1\ECD_S\Method\PS010820.M
 Quant Title : 8080.M
 QLast Update : Wed Jan 08 11:00:59 2020
 Response via : Initial Calibration
 Integrator: ChemStation

Volume Inj. : 2 µl
 Signal #1 Phase : Rtx-CLPesticides Signal #2 Phase: Rtx-CLPesticides2
 Signal #1 Info : 30M x 0.32mm x0.5 Signal #2 Info : 30M x 0.32mm x 0.25µm

Compound	RT#1	RT#2	Resp#1	Resp#2	ng/ml	ng/ml

System Monitoring Compounds						
4) S 2,4-DCAA	6.291	5.985	890.1E6	496.1E6	504.093	523.576
Target Compounds						
1) T Dalapon	2.525	2.206	69890268	60710985	27.260	47.889 #
2) T 3,5-DICHL...	0.000	5.172	0	111.4E6	N.D.	79.713
3) T 4-Nitroph...	6.068	5.617	18439236	92011096	18.932	154.967 #
5) T DICAMBA	6.479	6.120	2532562	17673938	<MDL	4.420 #
6) T MCPP	6.649	0.000	38303383	0	7.515	N.D. #
7) T MCPA	6.731	0.000	22233686	0	3.043	N.D. #
8) T DICHLORPROP	7.125	6.807	58203339	23449299	35.478	24.271 #
9) T 2,4-D	7.364	7.053	32040999	24519228	17.614	20.917
10) T Pentachlo...	7.774	0.000	62512329	0	2.571	N.D. #
11) T 2,4,5-TP ...	0.000	7.836	0	43528693	N.D.	8.328
12) T 2,4,5-T	8.493	0.000	72219147	0	7.827	N.D. #
13) T 2,4-DB	9.121	0.000	29506606	0	21.285	N.D. #
14) T DINOSEB	0.000	9.100	0	19436932	N.D.	5.145
15) T Picloram	10.074	10.066	28781228	45992303	2.306	6.191 #
16) T DCPA	0.000	10.066	0	45992303	N.D.	7.058

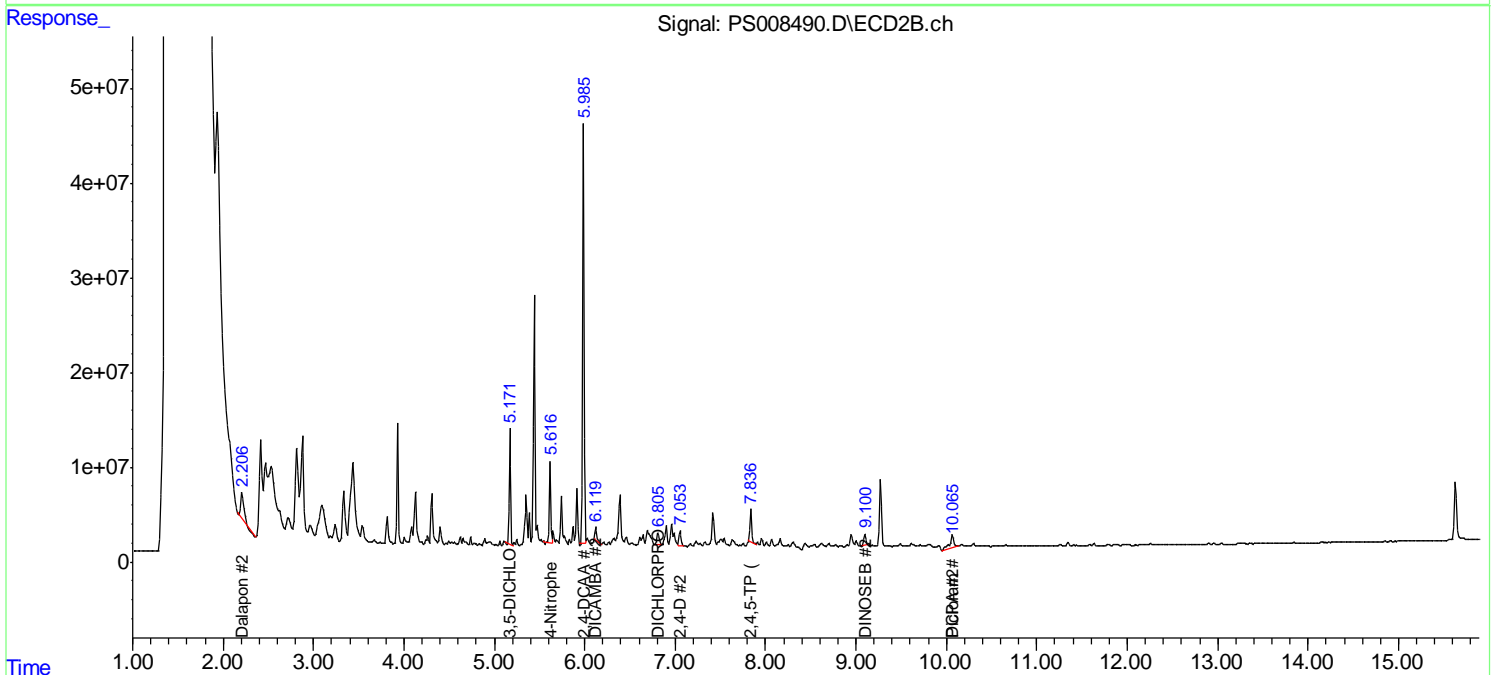
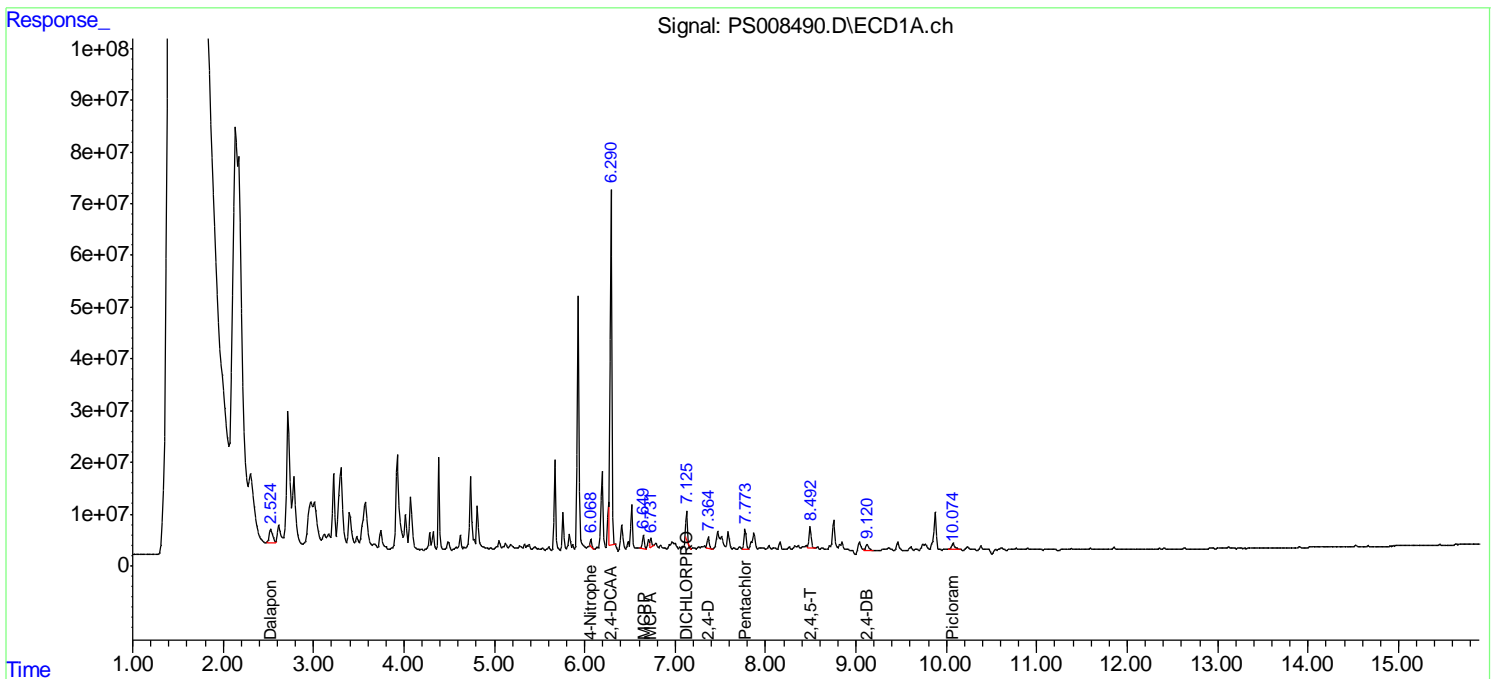
(f)=RT Delta > 1/2 Window (#)=Amounts differ by > 25% (m)=manual int.

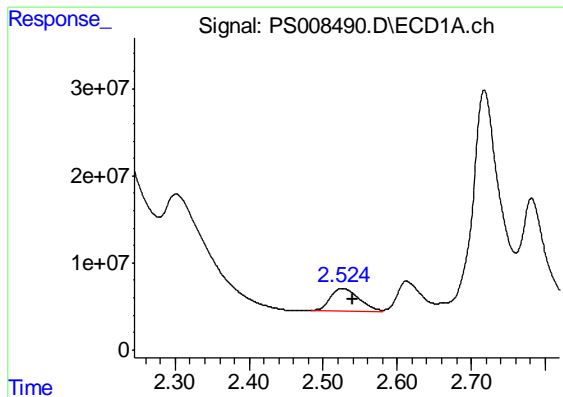
Data Path : Z:\pestpcbsrv\HPCHEM1\ECD_S\Data\PS012220\
 Data File : PS008490.D
 Signal(s) : Signal #1: ECD1A.ch Signal #2: ECD2B.ch
 Acq On : 21 Jan 2020 16:21
 Operator : DD\AJ
 Sample : L1165-01
 Misc :
 ALS Vial : 7 Sample Multiplier: 1

Instrument :
 ECD_S
 ClientSampled :
 QVD-GW-01-45

Integration File signal 1: autoint1.e
 Integration File signal 2: autoint2.e
 Quant Time: Jan 22 00:53:00 2020
 Quant Method : Z:\pestpcbsrv\HPCHEM1\ECD_S\Method\PS010820.M
 Quant Title : 8080.M
 QLast Update : Wed Jan 08 11:00:59 2020
 Response via : Initial Calibration
 Integrator: ChemStation

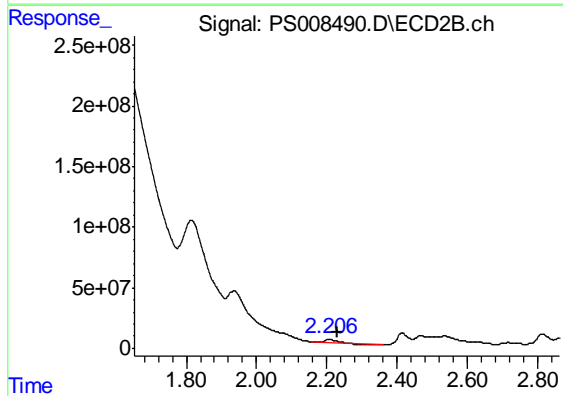
Volume Inj. : 2 µl
 Signal #1 Phase : Rtx-CLPesticides Signal #2 Phase: Rtx-CLPesticides2
 Signal #1 Info : 30M x 0.32mm x0.5 Signal #2 Info : 30M x 0.32mm x 0.25µm



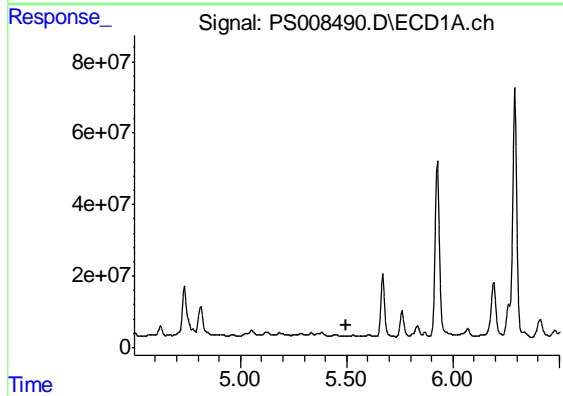


#1 Dalapon
 R.T.: 2.525 min
 Delta R.T.: -0.015 min
 Response: 69890268
 Conc: 27.26 ng/ml

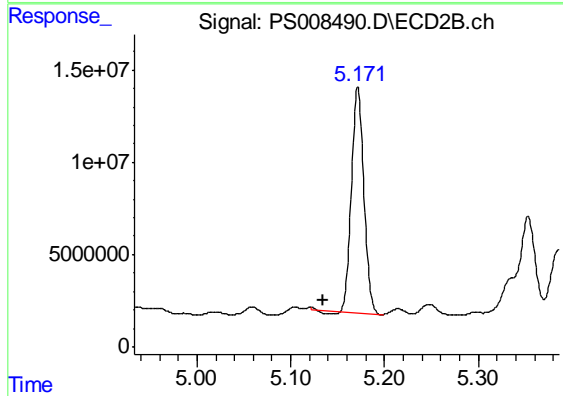
Instrument :
 ECD_S
 ClientSampleId :
 QVD-GW-01-45



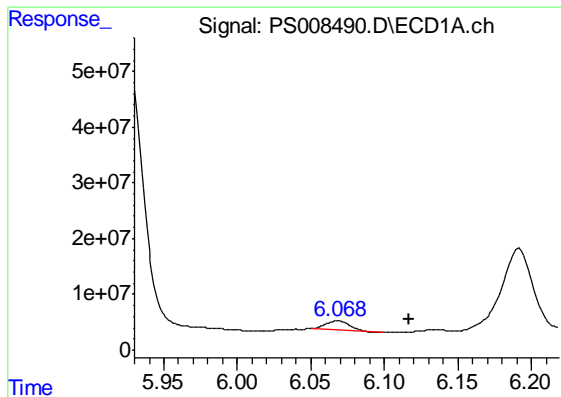
#1 Dalapon
 R.T.: 2.206 min
 Delta R.T.: -0.025 min
 Response: 60710985
 Conc: 47.89 ng/ml



#2 3,5-DICHLOROBENZOIC ACID
 R.T.: 0.000 min
 Exp R.T. : 5.501 min
 Response: 0
 Conc: N.D.



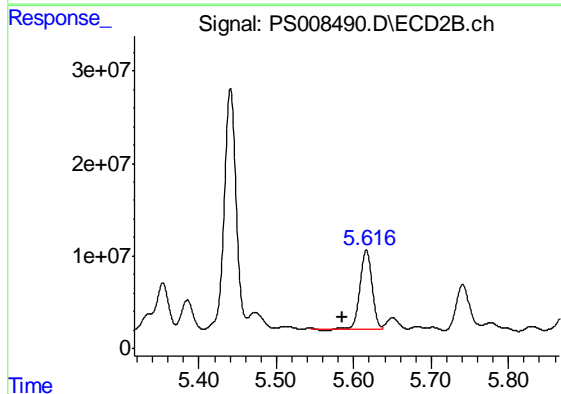
#2 3,5-DICHLOROBENZOIC ACID
 R.T.: 5.172 min
 Delta R.T.: 0.037 min
 Response: 111373126
 Conc: 79.71 ng/ml



#3 4-Nitrophenol

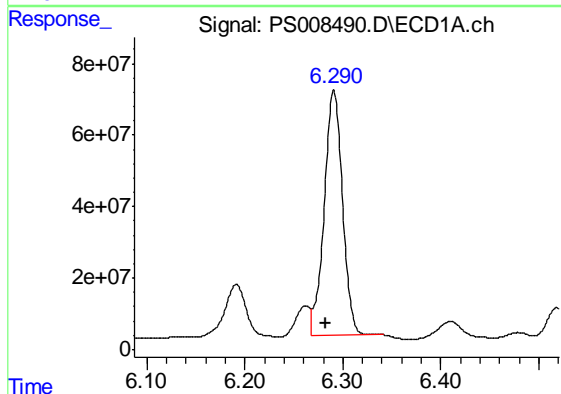
R.T.: 6.068 min
 Delta R.T.: -0.048 min
 Response: 18439236
 Conc: 18.93 ng/ml

Instrument :
 ECD_S
 ClientSampleId :
 QVD-GW-01-45



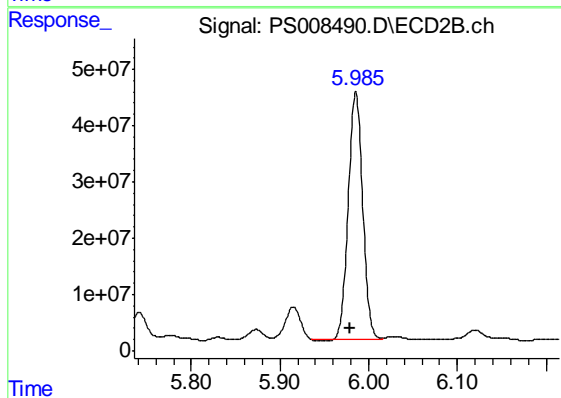
#3 4-Nitrophenol

R.T.: 5.617 min
 Delta R.T.: 0.031 min
 Response: 92011096
 Conc: 154.97 ng/ml



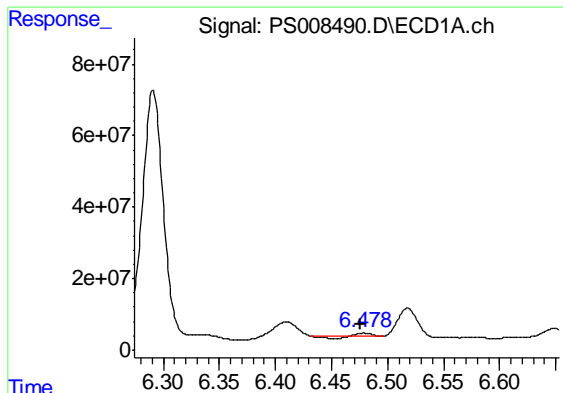
#4 2,4-DCAA

R.T.: 6.291 min
 Delta R.T.: 0.008 min
 Response: 890079189
 Conc: 504.09 ng/ml



#4 2,4-DCAA

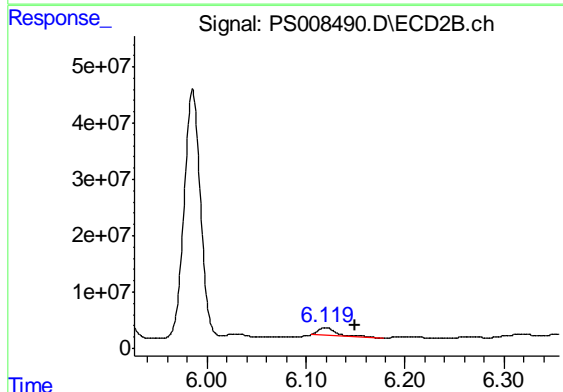
R.T.: 5.985 min
 Delta R.T.: 0.006 min
 Response: 496068815
 Conc: 523.58 ng/ml



#5 DICAMBA

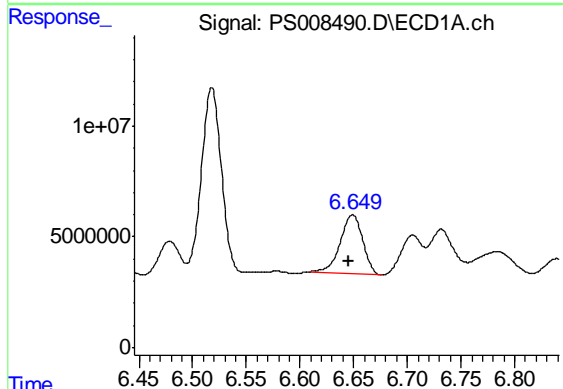
R.T.: 6.479 min
 Delta R.T.: 0.003 min
 Response: 2532562
 Conc: N.D.

Instrument :
 ECD_S
 ClientSampleId :
 QVD-GW-01-45



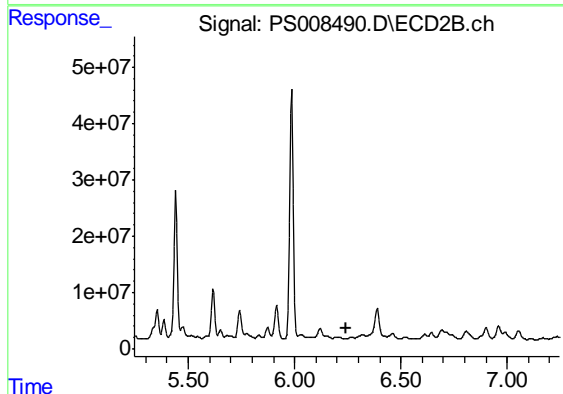
#5 DICAMBA

R.T.: 6.120 min
 Delta R.T.: -0.030 min
 Response: 17673938
 Conc: 4.42 ng/ml



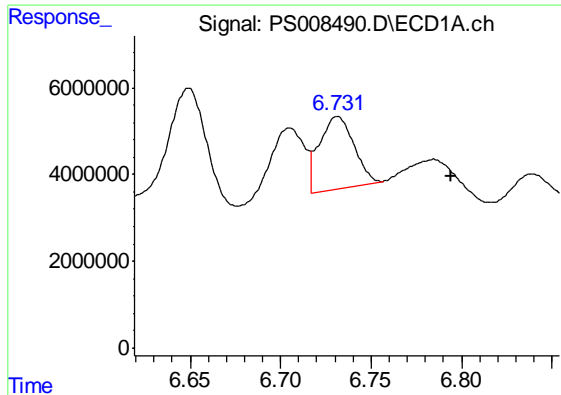
#6 MCPP

R.T.: 6.649 min
 Delta R.T.: 0.004 min
 Response: 38303383
 Conc: 7.52 ug/ml



#6 MCPP

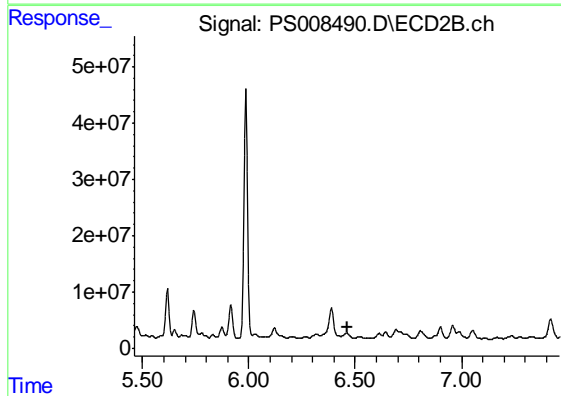
R.T.: 0.000 min
 Exp R.T. : 6.246 min
 Response: 0
 Conc: N.D.



#7 MCPA

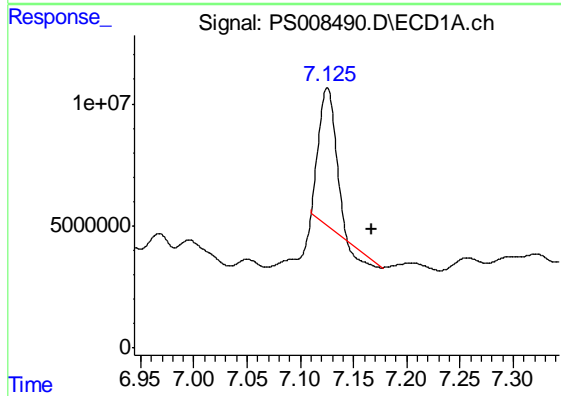
R.T.: 6.731 min
 Delta R.T.: -0.063 min
 Response: 22233686
 Conc: 3.04 ug/ml

Instrument :
 ECD_S
 ClientSampleId :
 QVD-GW-01-45



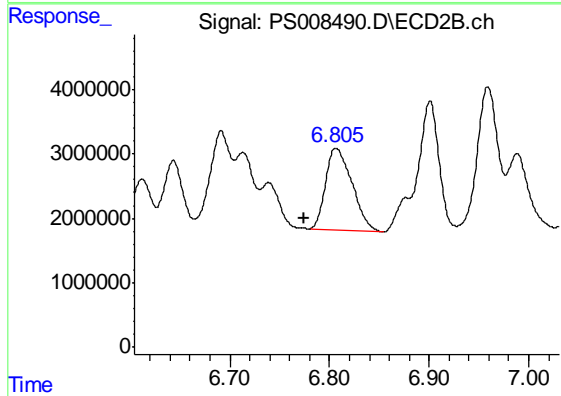
#7 MCPA

R.T.: 0.000 min
 Exp R.T. : 6.462 min
 Response: 0
 Conc: N.D.



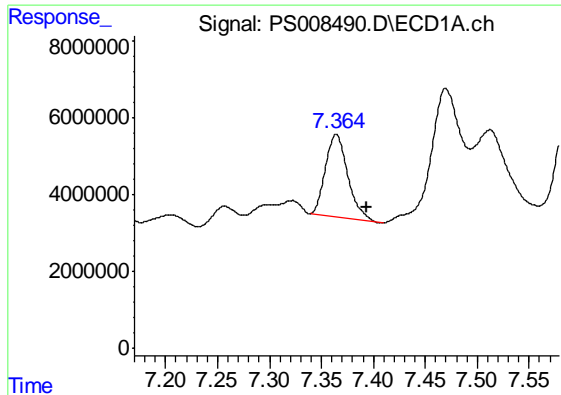
#8 DICHLORPROP

R.T.: 7.125 min
 Delta R.T.: -0.042 min
 Response: 58203339
 Conc: 35.48 ng/ml



#8 DICHLORPROP

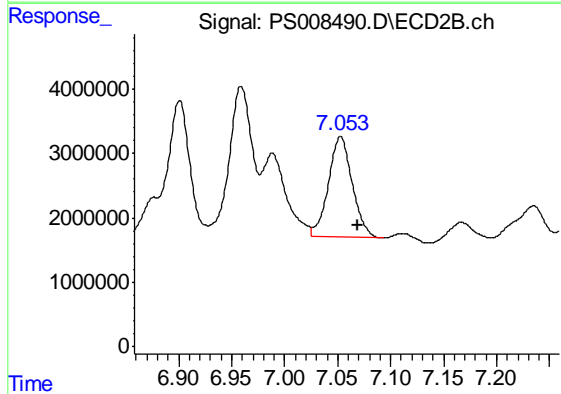
R.T.: 6.807 min
 Delta R.T.: 0.032 min
 Response: 23449299
 Conc: 24.27 ng/ml



#9 2,4-D

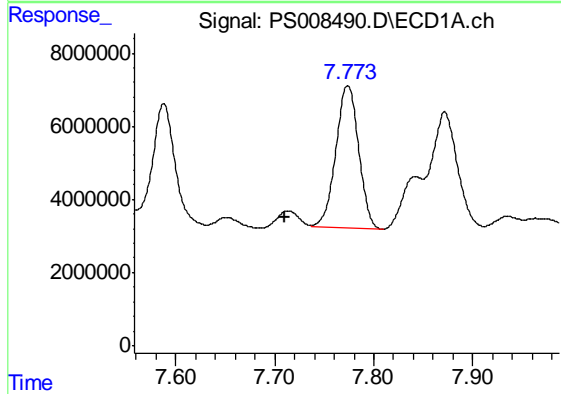
R.T.: 7.364 min
 Delta R.T.: -0.030 min
 Response: 32040999
 Conc: 17.61 ng/ml

Instrument :
 ECD_S
 ClientSampleId :
 QVD-GW-01-45



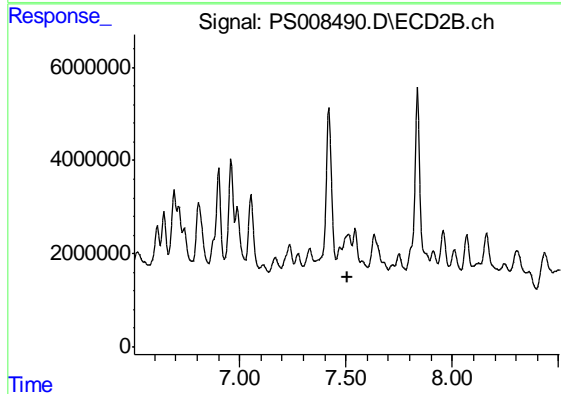
#9 2,4-D

R.T.: 7.053 min
 Delta R.T.: -0.016 min
 Response: 24519228
 Conc: 20.92 ng/ml



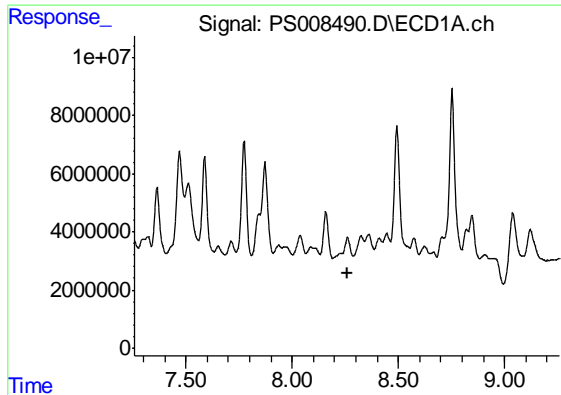
#10 Pentachlorophenol

R.T.: 7.774 min
 Delta R.T.: 0.064 min
 Response: 62512329
 Conc: 2.57 ng/ml



#10 Pentachlorophenol

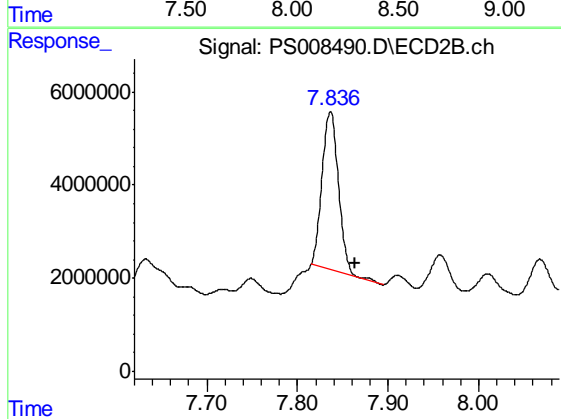
R.T.: 0.000 min
 Exp R.T. : 7.505 min
 Response: 0
 Conc: N.D.



#11 2,4,5-TP (SILVEX)

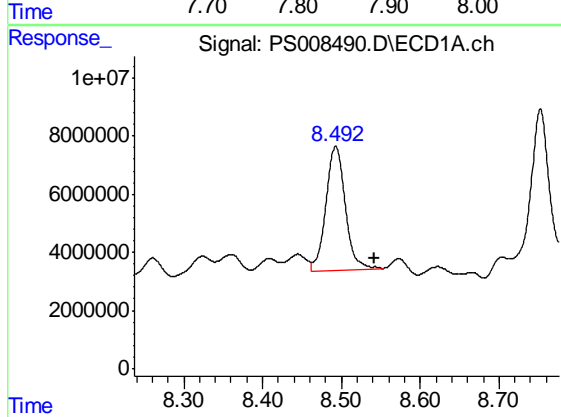
R.T.: 0.000 min
 Exp R.T. : 8.258 min
 Response: 0
 Conc: N.D.

Instrument :
 ECD_S
 ClientSampleId :
 QVD-GW-01-45



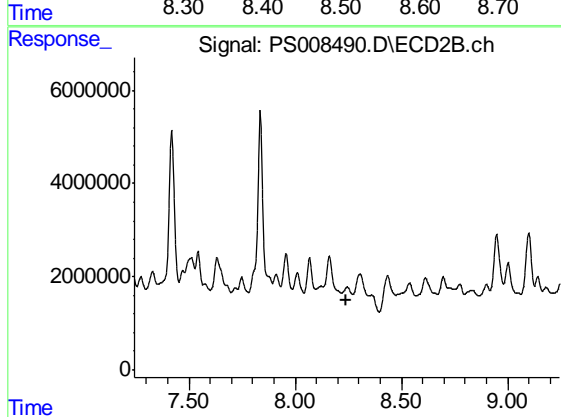
#11 2,4,5-TP (SILVEX)

R.T.: 7.836 min
 Delta R.T.: -0.027 min
 Response: 43528693
 Conc: 8.33 ng/ml



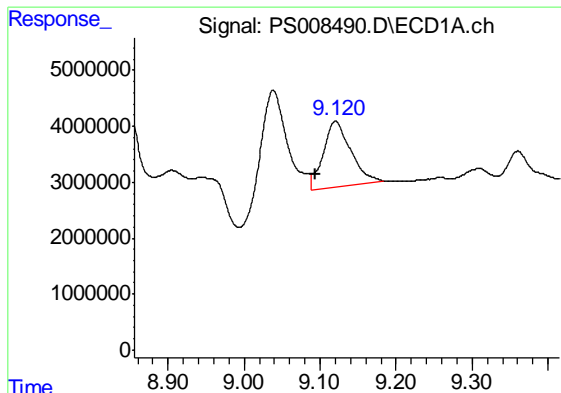
#12 2,4,5-T

R.T.: 8.493 min
 Delta R.T.: -0.049 min
 Response: 72219147
 Conc: 7.83 ng/ml



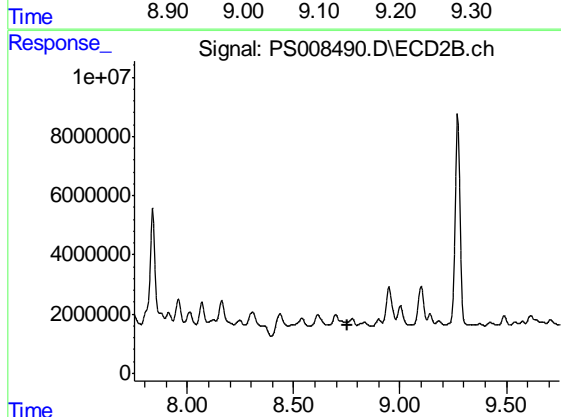
#12 2,4,5-T

R.T.: 0.000 min
 Exp R.T. : 8.243 min
 Response: 0
 Conc: N.D.

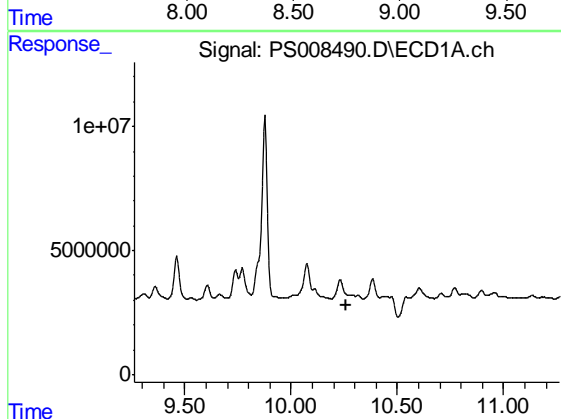


#13 2,4-DB
 R.T.: 9.121 min
 Delta R.T.: 0.026 min
 Response: 29506606
 Conc: 21.29 ng/ml

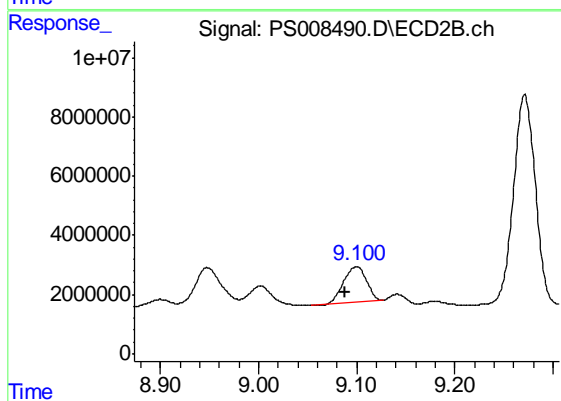
Instrument :
 ECD_S
 ClientSampleId :
 QVD-GW-01-45



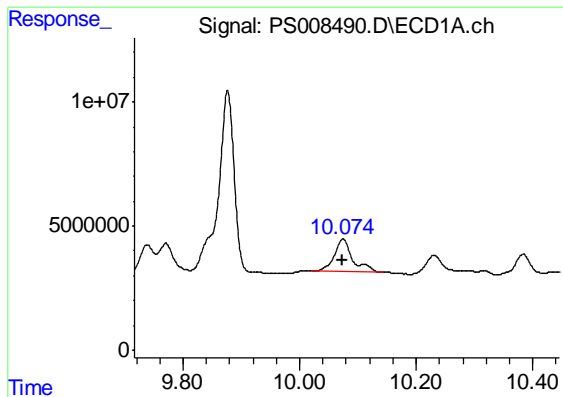
#13 2,4-DB
 R.T.: 0.000 min
 Exp R.T. : 8.751 min
 Response: 0
 Conc: N.D.



#14 DINOSEB
 R.T.: 0.000 min
 Exp R.T. : 10.263 min
 Response: 0
 Conc: N.D.



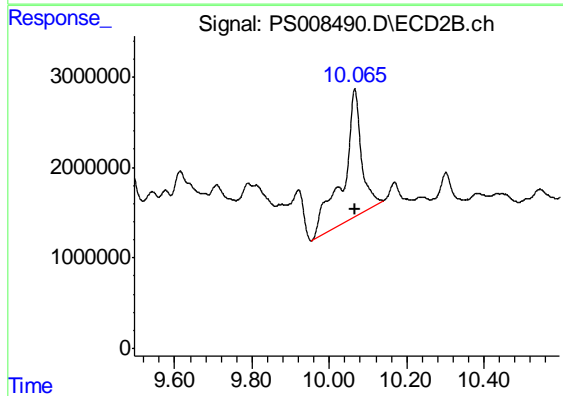
#14 DINOSEB
 R.T.: 9.100 min
 Delta R.T.: 0.012 min
 Response: 19436932
 Conc: 5.15 ng/ml



#15 Picloram

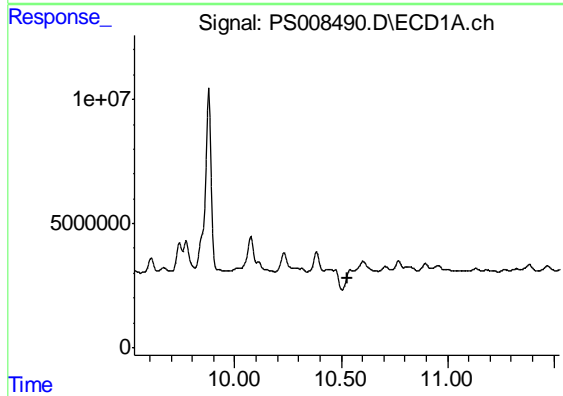
R.T.: 10.074 min
 Delta R.T.: 0.001 min
 Response: 28781228
 Conc: 2.31 ng/ml

Instrument :
 ECD_S
 ClientSampleId :
 QVD-GW-01-45



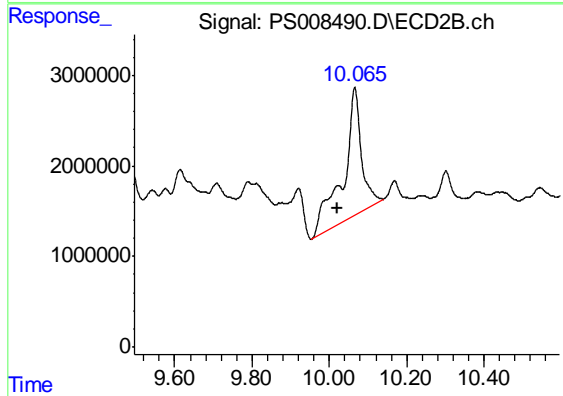
#15 Picloram

R.T.: 10.066 min
 Delta R.T.: -0.002 min
 Response: 45992303
 Conc: 6.19 ng/ml



#16 DCPA

R.T.: 0.000 min
 Exp R.T. : 10.527 min
 Response: 0
 Conc: N.D.



#16 DCPA

R.T.: 10.066 min
 Delta R.T.: 0.047 min
 Response: 45992303
 Conc: 7.06 ng/ml