

Data Path : Z:\pestpcbsrv\HPCHEM1\ECD\_S\Data\PS012220\  
 Data File : PS008494.D  
 Signal(s) : Signal #1: ECD1A.ch Signal #2: ECD2B.ch  
 Acq On : 21 Jan 2020 17:48  
 Operator : DD\AJ  
 Sample : PB126244TB  
 Misc :  
 ALS Vial : 11 Sample Multiplier: 1

Instrument :  
 ECD\_S  
 ClientSampleId :  
 PB126244TB

Integration File signal 1: autoint1.e  
 Integration File signal 2: autoint2.e  
 Quant Time: Jan 22 00:54:06 2020  
 Quant Method : Z:\pestpcbsrv\HPCHEM1\ECD\_S\Method\PS010820.M  
 Quant Title : 8080.M  
 QLast Update : Wed Jan 08 11:00:59 2020  
 Response via : Initial Calibration  
 Integrator: ChemStation

Volume Inj. : 2 µl  
 Signal #1 Phase : Rtx-CLPesticides Signal #2 Phase: Rtx-CLPesticides2  
 Signal #1 Info : 30M x 0.32mm x0.5 Signal #2 Info : 30M x 0.32mm x 0.25µm

	Compound	RT#1	RT#2	Resp#1	Resp#2	ng/ml	ng/ml
-----							
System Monitoring Compounds							
4) S	2,4-DCAA	6.270	5.964	500.1E6	294.9E6	283.224	311.300
Target Compounds							
1) T	Dalapon	2.504	2.186	100.3E6	36345164	39.114	28.669 #
2) T	3,5-DICHL...	0.000	5.150	0	125.5E6	N.D.	89.811
5) T	DICAMBA	6.534	6.097	28436239	614669	4.138	<MDL #
6) T	MCPD	6.684	0.000	37520397	0	7.361	N.D. #
7) T	MCPA	0.000	6.435	0	9945786	N.D.	2.329
8) T	DICHLORPROP	0.000	6.783	0	22547400	N.D.	23.337
9) T	2,4-D	7.450	7.030	11852918	10960353	6.516	9.350 #
10) T	Pentachlo...	7.753	0.000	28191979	0	1.160	N.D. #
11) T	2,4,5-TP ...	0.000	7.804	0	12387523	N.D.	2.370
12) T	2,4,5-T	0.000	8.291	0	15362445	N.D.	2.905
15) T	Picloram	0.000	10.048	0	18473360	N.D.	2.487
16) T	DCPA	0.000	10.048	0	18473360	N.D.	2.835
-----							

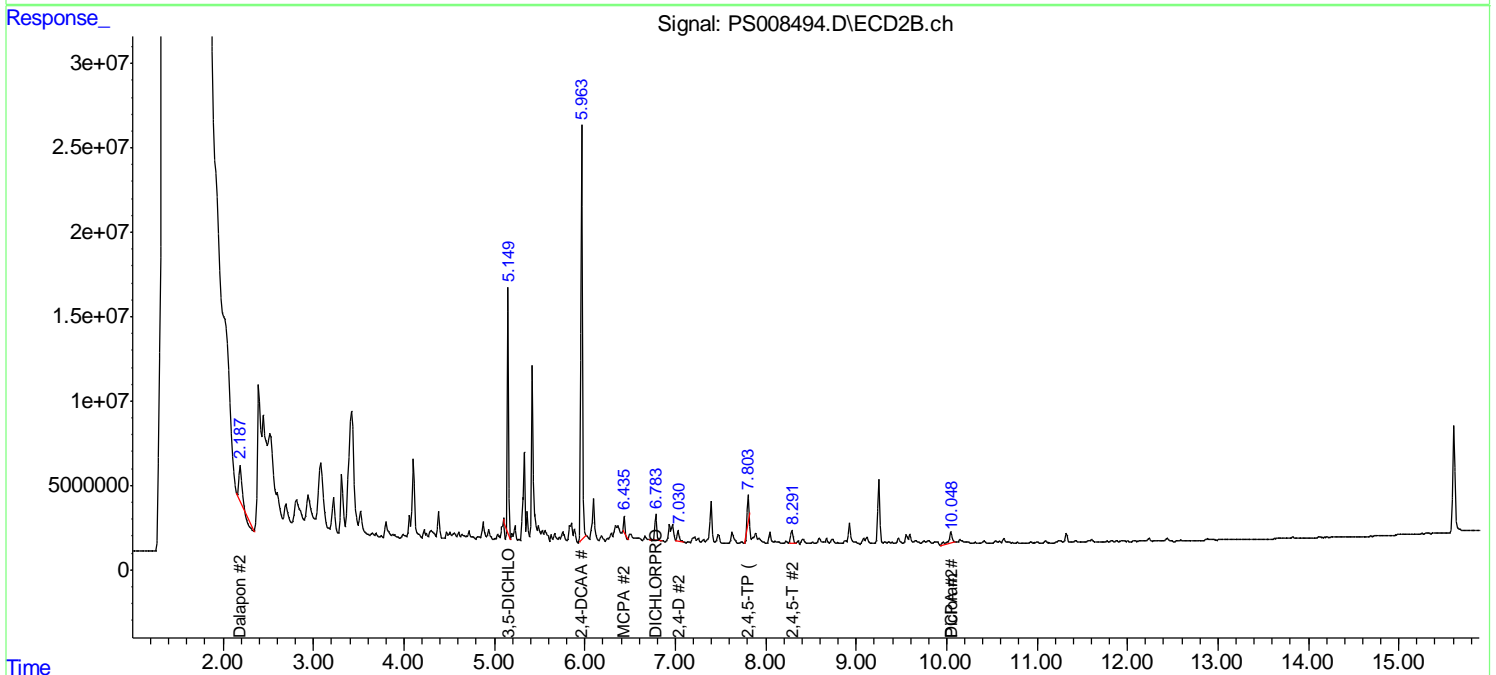
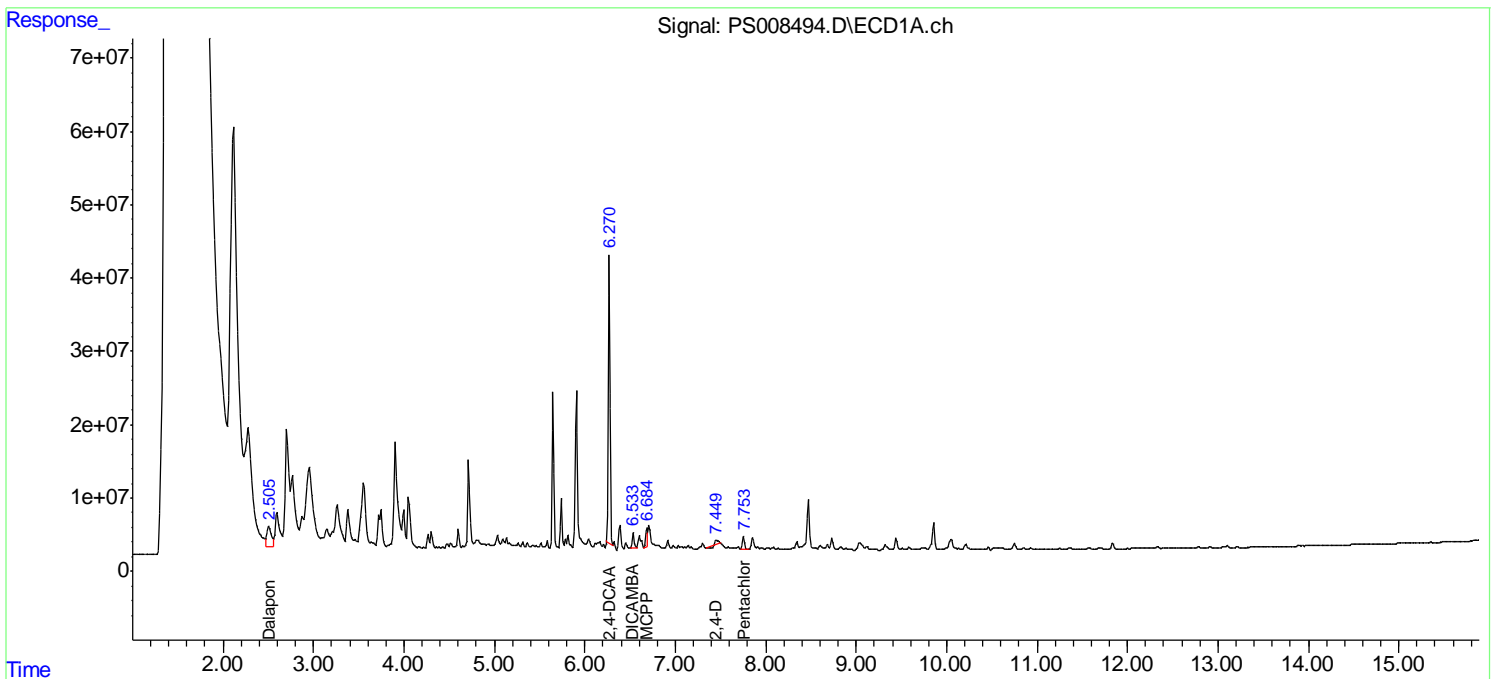
(f)=RT Delta > 1/2 Window (#)=Amounts differ by > 25% (m)=manual int.

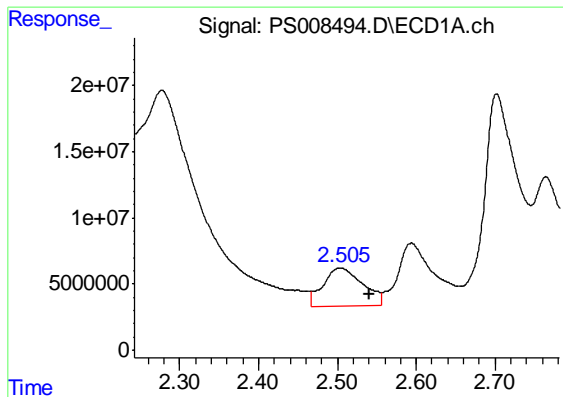
Data Path : Z:\pestpcbsrv\HPCHEM1\ECD\_S\Data\PS012220\  
 Data File : PS008494.D  
 Signal(s) : Signal #1: ECD1A.ch Signal #2: ECD2B.ch  
 Acq On : 21 Jan 2020 17:48  
 Operator : DD\AJ  
 Sample : PB126244TB  
 Misc :  
 ALS Vial : 11 Sample Multiplier: 1

Instrument :  
 ECD\_S  
 ClientSampleId :  
 PB126244TB

Integration File signal 1: autoint1.e  
 Integration File signal 2: autoint2.e  
 Quant Time: Jan 22 00:54:06 2020  
 Quant Method : Z:\pestpcbsrv\HPCHEM1\ECD\_S\Method\PS010820.M  
 Quant Title : 8080.M  
 QLast Update : Wed Jan 08 11:00:59 2020  
 Response via : Initial Calibration  
 Integrator: ChemStation

Volume Inj. : 2 µl  
 Signal #1 Phase : Rtx-CLPesticides Signal #2 Phase: Rtx-CLPesticides2  
 Signal #1 Info : 30M x 0.32mm x0.5 Signal #2 Info : 30M x 0.32mm x 0.25µm

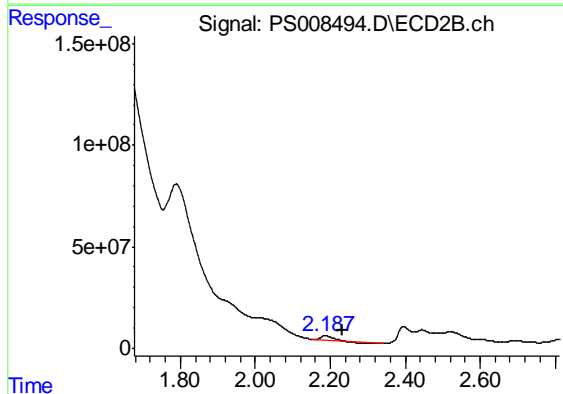




#1 Dalapon

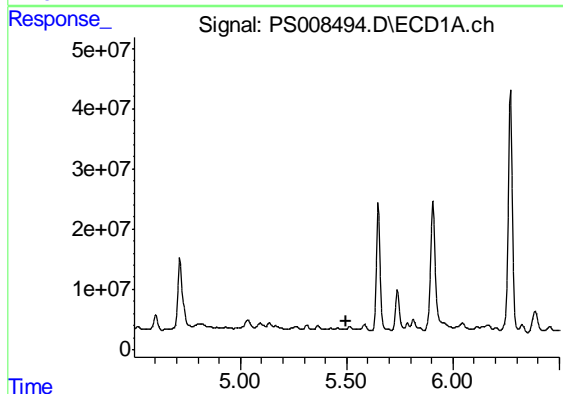
R.T.: 2.504 min  
 Delta R.T.: -0.036 min  
 Response: 100282227  
 Conc: 39.11 ng/ml

Instrument :  
 ECD\_S  
 ClientSampleId :  
 PB126244TB



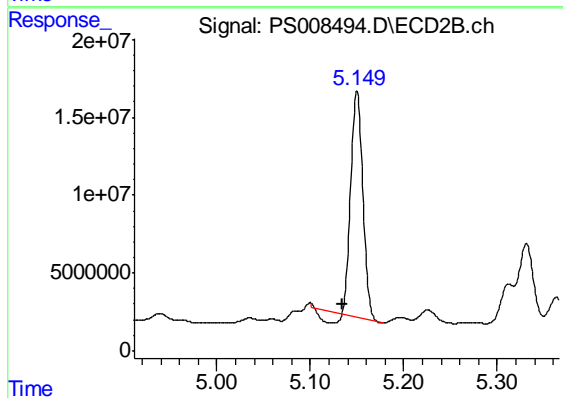
#1 Dalapon

R.T.: 2.186 min  
 Delta R.T.: -0.045 min  
 Response: 36345164  
 Conc: 28.67 ng/ml



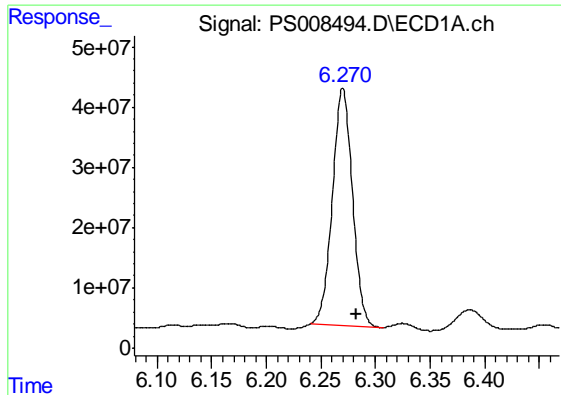
#2 3,5-DICHLOROBENZOIC ACID

R.T.: 0.000 min  
 Exp R.T. : 5.501 min  
 Response: 0  
 Conc: N.D.



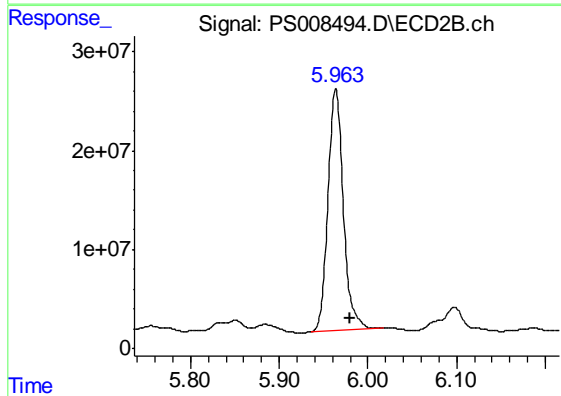
#2 3,5-DICHLOROBENZOIC ACID

R.T.: 5.150 min  
 Delta R.T.: 0.016 min  
 Response: 125482262  
 Conc: 89.81 ng/ml

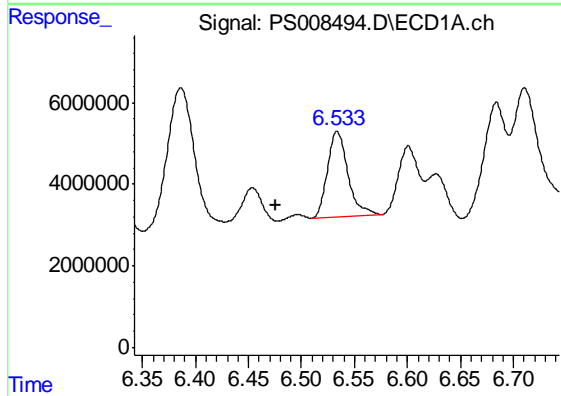


#4 2,4-DCAA  
 R.T.: 6.270 min  
 Delta R.T.: -0.013 min  
 Response: 500090517  
 Conc: 283.22 ng/ml

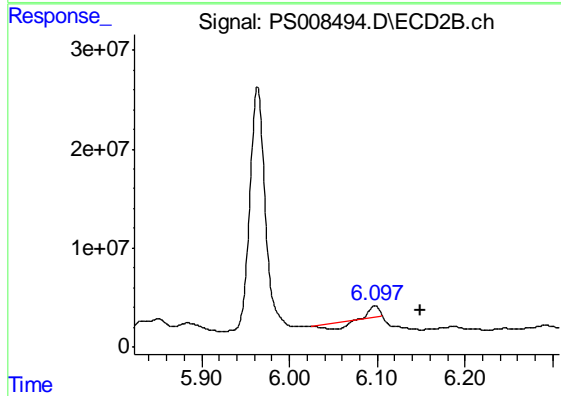
Instrument :  
 ECD\_S  
 ClientSampleId :  
 PB126244TB



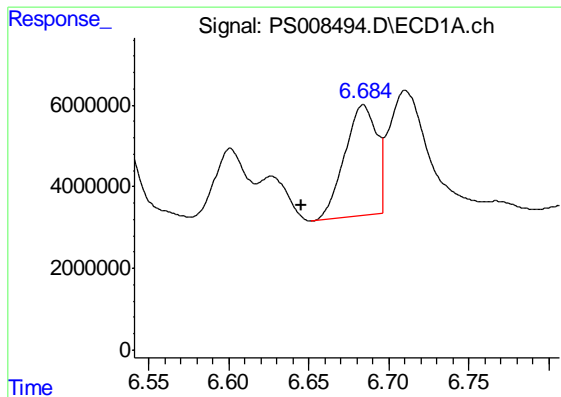
#4 2,4-DCAA  
 R.T.: 5.964 min  
 Delta R.T.: -0.016 min  
 Response: 294945503  
 Conc: 311.30 ng/ml



#5 DICAMBA  
 R.T.: 6.534 min  
 Delta R.T.: 0.058 min  
 Response: 28436239  
 Conc: 4.14 ng/ml

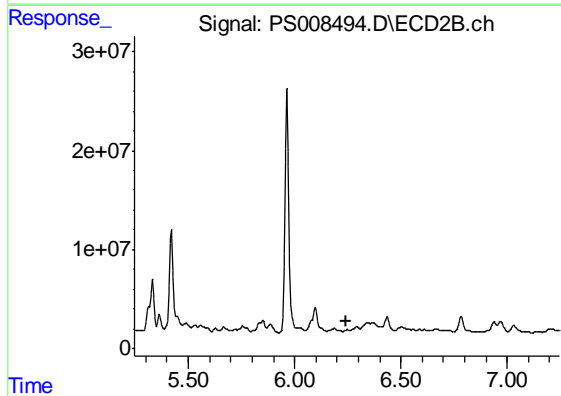


#5 DICAMBA  
 R.T.: 6.097 min  
 Delta R.T.: -0.052 min  
 Response: 614669  
 Conc: N.D.

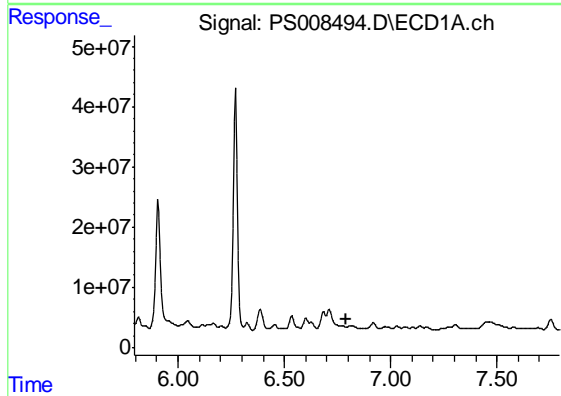


#6 MCPP  
 R.T.: 6.684 min  
 Delta R.T.: 0.038 min  
 Response: 37520397  
 Conc: 7.36 ug/ml

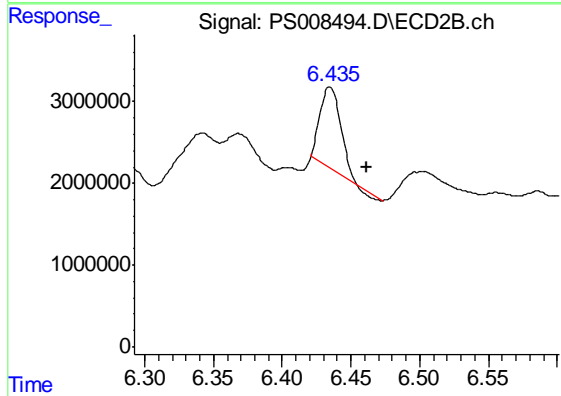
Instrument :  
 ECD\_S  
 ClientSampleId :  
 PB126244TB



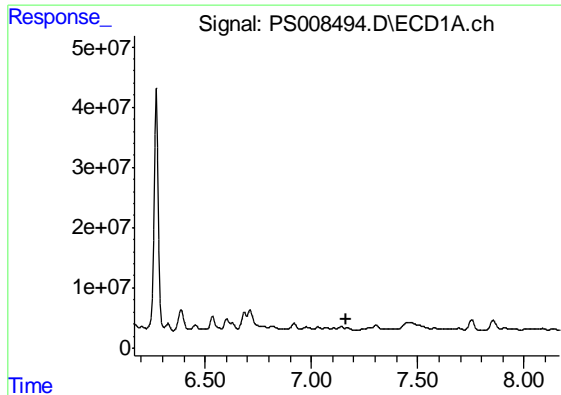
#6 MCPP  
 R.T.: 0.000 min  
 Exp R.T. : 6.246 min  
 Response: 0  
 Conc: N.D.



#7 MCPA  
 R.T.: 0.000 min  
 Exp R.T. : 6.794 min  
 Response: 0  
 Conc: N.D.



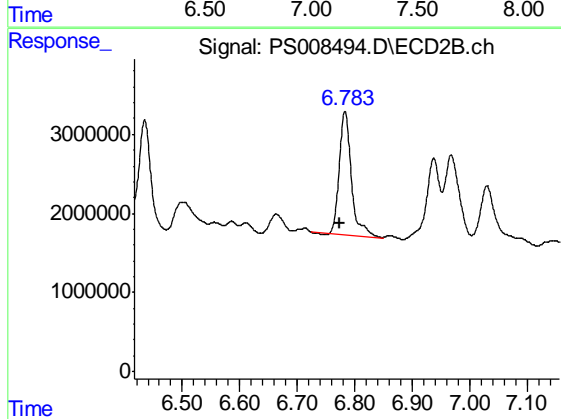
#7 MCPA  
 R.T.: 6.435 min  
 Delta R.T.: -0.027 min  
 Response: 9945786  
 Conc: 2.33 ug/ml



#8 DICHLORPROP

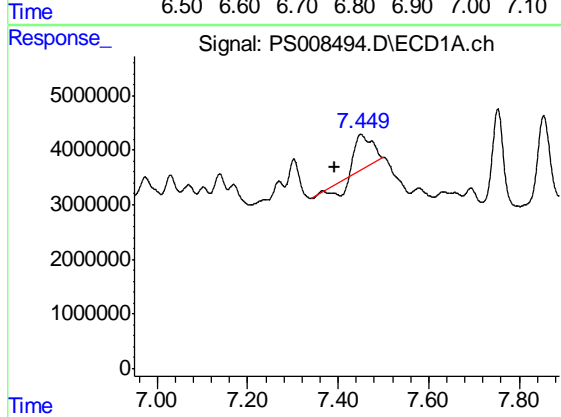
R.T.: 0.000 min  
 Exp R.T. : 7.167 min  
 Response: 0  
 Conc: N.D.

Instrument :  
 ECD\_S  
 ClientSampleId :  
 PB126244TB



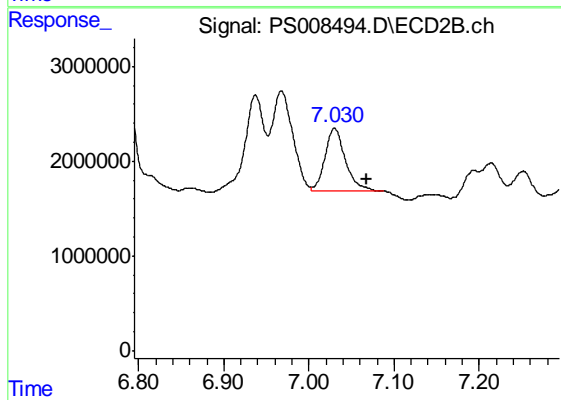
#8 DICHLORPROP

R.T.: 6.783 min  
 Delta R.T.: 0.008 min  
 Response: 22547400  
 Conc: 23.34 ng/ml



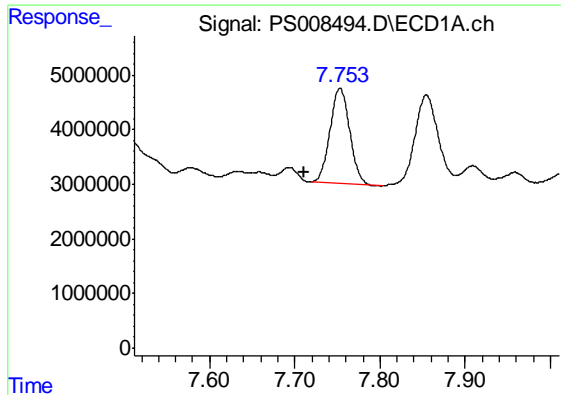
#9 2,4-D

R.T.: 7.450 min  
 Delta R.T.: 0.057 min  
 Response: 11852918  
 Conc: 6.52 ng/ml



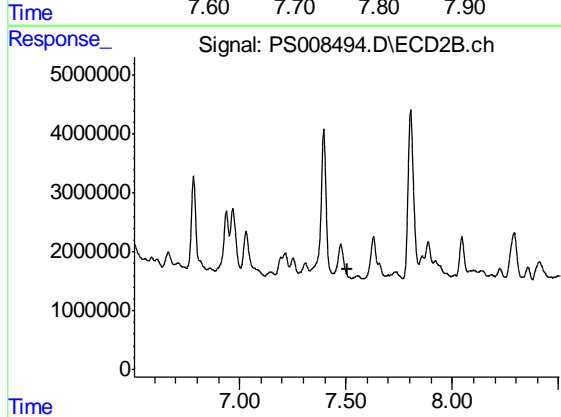
#9 2,4-D

R.T.: 7.030 min  
 Delta R.T.: -0.039 min  
 Response: 10960353  
 Conc: 9.35 ng/ml

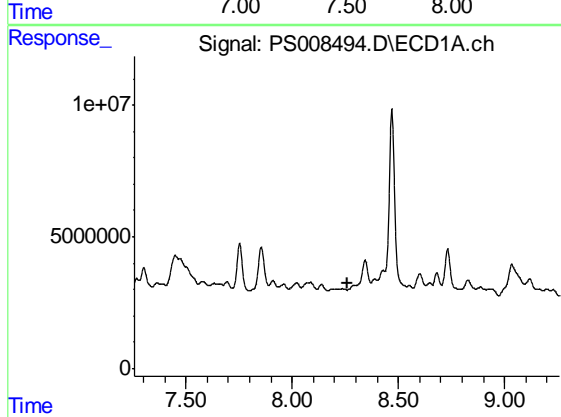


#10 Pentachlorophenol  
 R.T.: 7.753 min  
 Delta R.T.: 0.043 min  
 Response: 28191979  
 Conc: 1.16 ng/ml

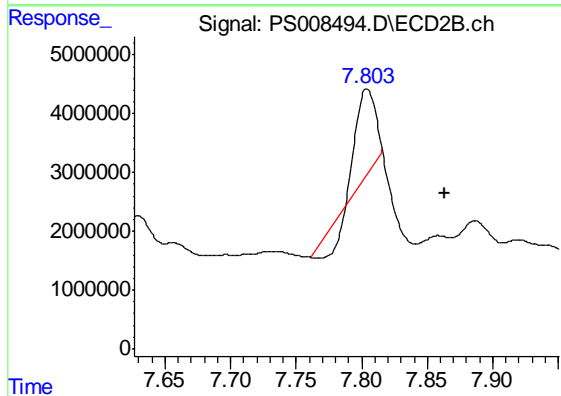
Instrument :  
 ECD\_S  
 ClientSampled :  
 PB126244TB



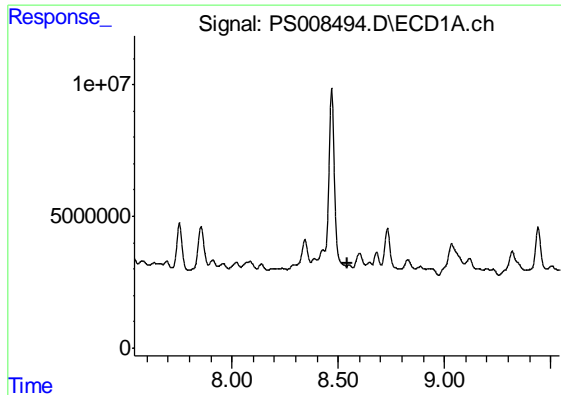
#10 Pentachlorophenol  
 R.T.: 0.000 min  
 Exp R.T. : 7.505 min  
 Response: 0  
 Conc: N.D.



#11 2,4,5-TP (SILVEX)  
 R.T.: 0.000 min  
 Exp R.T. : 8.258 min  
 Response: 0  
 Conc: N.D.

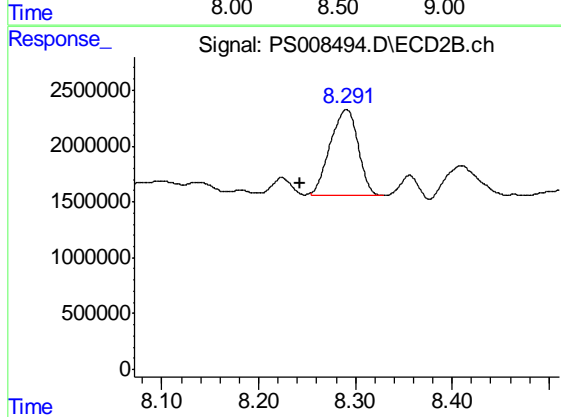


#11 2,4,5-TP (SILVEX)  
 R.T.: 7.804 min  
 Delta R.T.: -0.059 min  
 Response: 12387523  
 Conc: 2.37 ng/ml

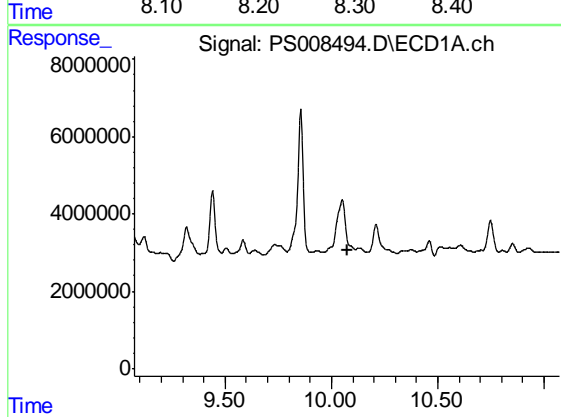


#12 2,4,5-T  
 R.T.: 0.000 min  
 Exp R.T. : 8.541 min  
 Response: 0  
 Conc: N.D.

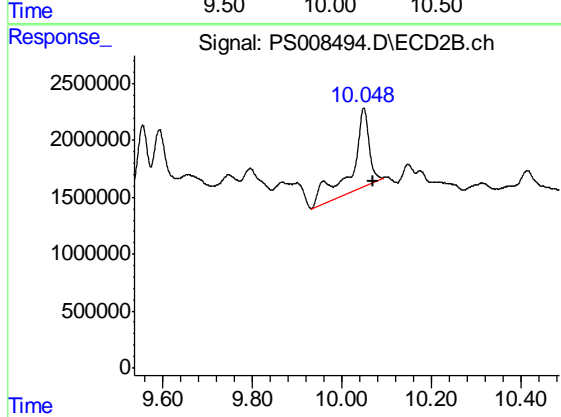
Instrument :  
 ECD\_S  
 ClientSampleId :  
 PB126244TB



#12 2,4,5-T  
 R.T.: 8.291 min  
 Delta R.T.: 0.047 min  
 Response: 15362445  
 Conc: 2.91 ng/ml

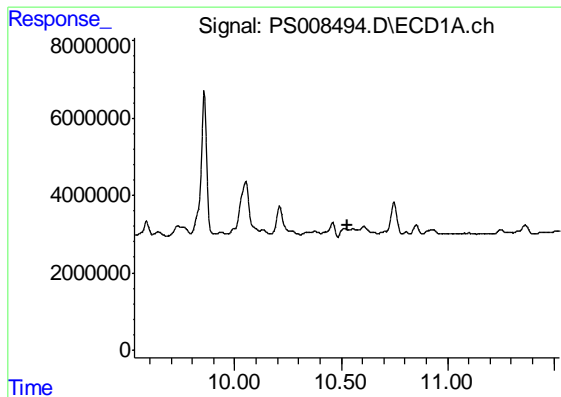


#15 Picloram  
 R.T.: 0.000 min  
 Exp R.T. : 10.073 min  
 Response: 0  
 Conc: N.D.



#15 Picloram  
 R.T.: 10.048 min  
 Delta R.T.: -0.020 min  
 Response: 18473360  
 Conc: 2.49 ng/ml

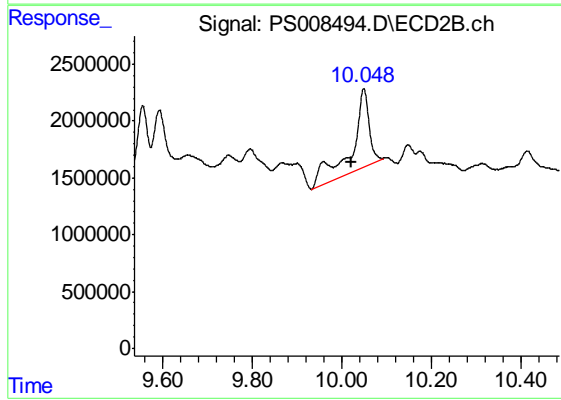




#16 DCPA

R.T.: 0.000 min  
Exp R.T. : 10.527 min  
Response: 0  
Conc: N.D.

Instrument :  
ECD\_S  
ClientSampleId :  
PB126244TB



#16 DCPA

R.T.: 10.048 min  
Delta R.T.: 0.029 min  
Response: 18473360  
Conc: 2.83 ng/ml