

Data Path : Z:\pestpcbsrv\HPCHEM1\ECD_S\Data\PS012220\
 Data File : PS008506.D
 Signal(s) : Signal #1: ECD1A.ch Signal #2: ECD2B.ch
 Acq On : 21 Jan 2020 22:11
 Operator : DD\AJ
 Sample : L1181-06
 Misc :
 ALS Vial : 21 Sample Multiplier: 1

Instrument :
 ECD_S
 ClientSampleId :
 93OAK-AVE-COMP

Integration File signal 1: autoint1.e
 Integration File signal 2: autoint2.e
 Quant Time: Jan 22 00:56:57 2020
 Quant Method : Z:\pestpcbsrv\HPCHEM1\ECD_S\Method\PS010820.M
 Quant Title : 8080.M
 QLast Update : Wed Jan 08 11:00:59 2020
 Response via : Initial Calibration
 Integrator: ChemStation

Volume Inj. : 2 µl
 Signal #1 Phase : Rtx-CLPesticides Signal #2 Phase: Rtx-CLPesticides2
 Signal #1 Info : 30M x 0.32mm x0.5 Signal #2 Info : 30M x 0.32mm x 0.25µm

	Compound	RT#1	RT#2	Resp#1	Resp#2	ng/ml	ng/ml

System Monitoring Compounds							
4) S	2,4-DCAA	6.290	5.984	523.9E6	305.5E6	296.710	322.439
Target Compounds							
1) T	Dalapon	2.524	2.207	145.4E6	49682167	56.704	39.189 #
2) T	3,5-DICHL...	0.000	5.170	0	149.1E6	N.D.	106.687
5) T	DICAMBA	0.000	6.117	0	10398302	N.D.	2.600
6) T	MCPD	6.704	0.000	34039473	0	6.679	N.D. #
7) T	MCPA	6.731	6.508	138.0E6	16230931	18.887	3.801 #
8) T	DICHLORPROP	0.000	6.803	0	11199375	N.D.	11.592
9) T	2,4-D	0.000	7.050	0	11182420	N.D.	9.539
10) T	Pentachlo...	7.774	0.000	28769522	0	1.183	N.D. #
12) T	2,4,5-T	8.490	8.313	132.6E6	14491821	14.368	2.740 #
13) T	2,4-DB	9.053	0.000	26707372	0	19.266	N.D. #

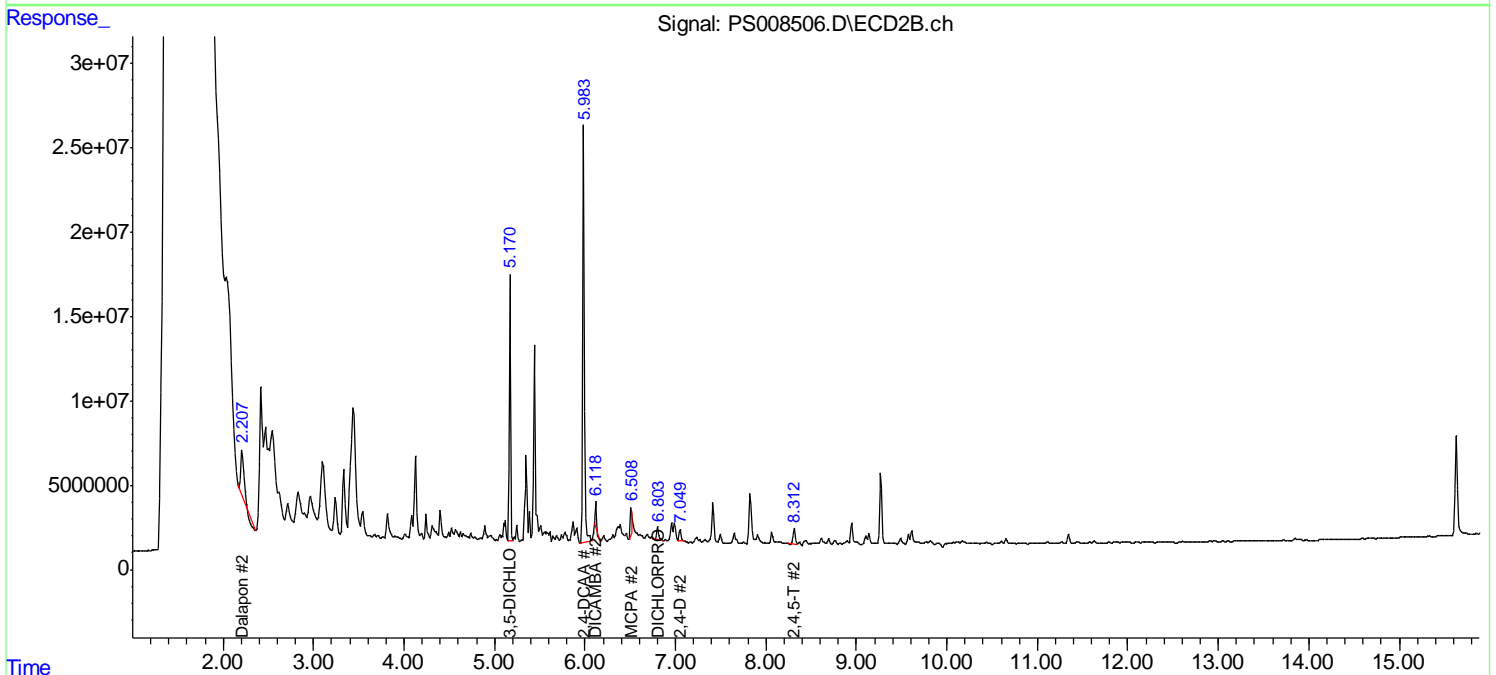
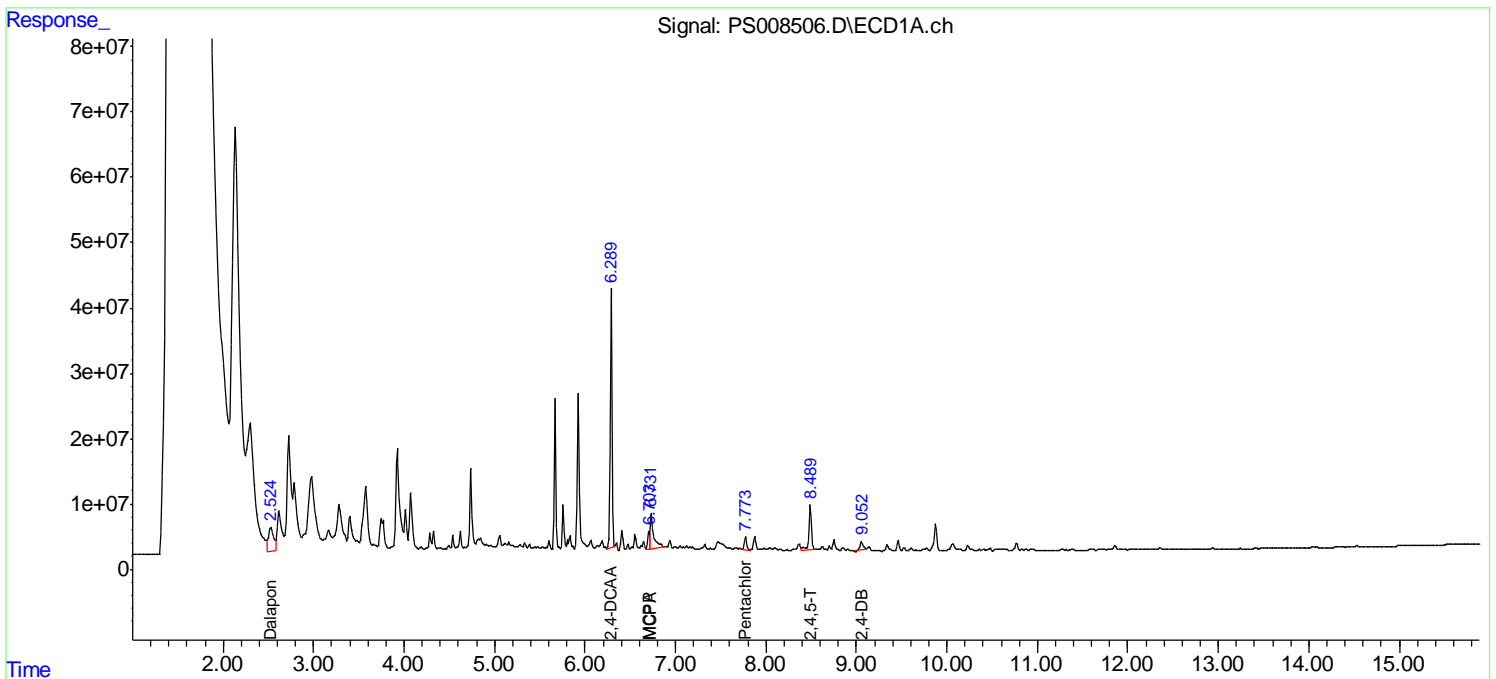
(f)=RT Delta > 1/2 Window (#)=Amounts differ by > 25% (m)=manual int.

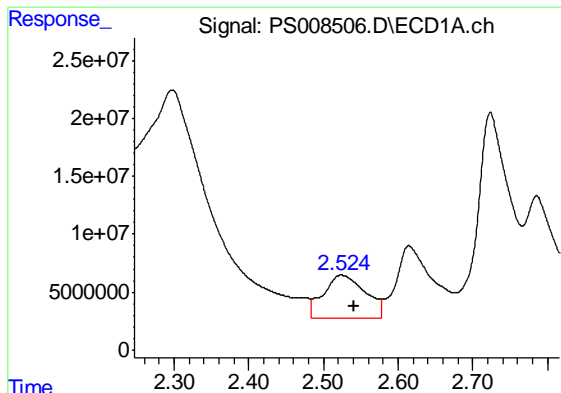
Data Path : Z:\pestpcbsrv\HPCHEM1\ECD_S\Data\PS012220\
 Data File : PS008506.D
 Signal(s) : Signal #1: ECD1A.ch Signal #2: ECD2B.ch
 Acq On : 21 Jan 2020 22:11
 Operator : DD\AJ
 Sample : L1181-06
 Misc :
 ALS Vial : 21 Sample Multiplier: 1

Instrument :
 ECD_S
 ClientSampleId :
 93OAK-AVE-COMP

Integration File signal 1: autoint1.e
 Integration File signal 2: autoint2.e
 Quant Time: Jan 22 00:56:57 2020
 Quant Method : Z:\pestpcbsrv\HPCHEM1\ECD_S\Method\PS010820.M
 Quant Title : 8080.M
 QLast Update : Wed Jan 08 11:00:59 2020
 Response via : Initial Calibration
 Integrator: ChemStation

Volume Inj. : 2 µl
 Signal #1 Phase : Rtx-CLPesticides Signal #2 Phase: Rtx-CLPesticides2
 Signal #1 Info : 30M x 0.32mm x0.5 Signal #2 Info : 30M x 0.32mm x 0.25µm

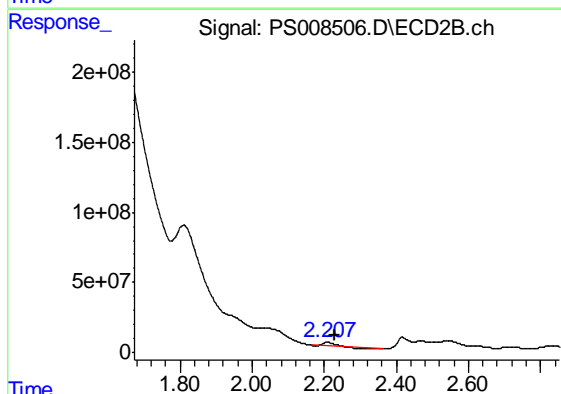




#1 Dalapon

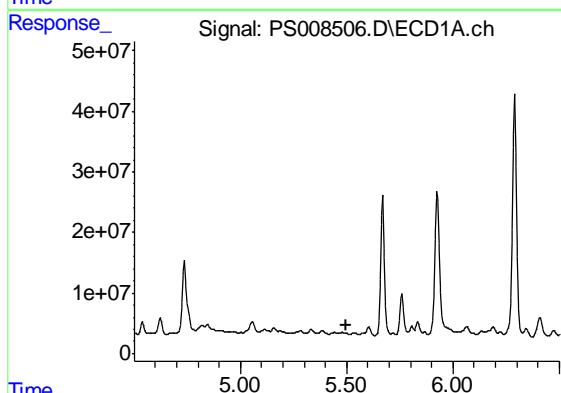
R.T.: 2.524 min
 Delta R.T.: -0.016 min
 Response: 145379221
 Conc: 56.70 ng/ml

Instrument :
 ECD_S
 ClientSampleId :
 93OAK-AVE-COMP



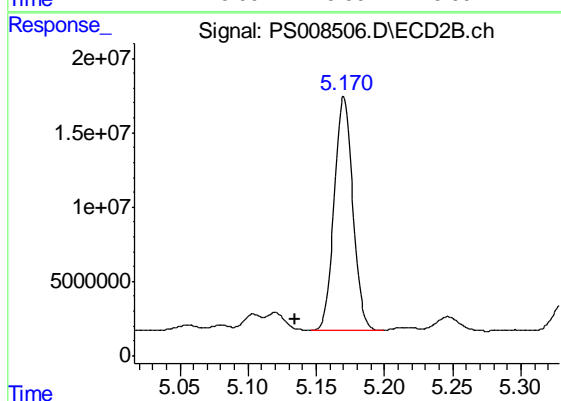
#1 Dalapon

R.T.: 2.207 min
 Delta R.T.: -0.024 min
 Response: 49682167
 Conc: 39.19 ng/ml



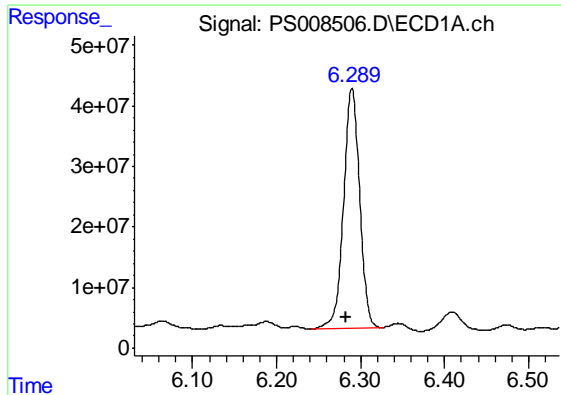
#2 3,5-DICHLOROBENZOIC ACID

R.T.: 0.000 min
 Exp R.T. : 5.501 min
 Response: 0
 Conc: N.D.



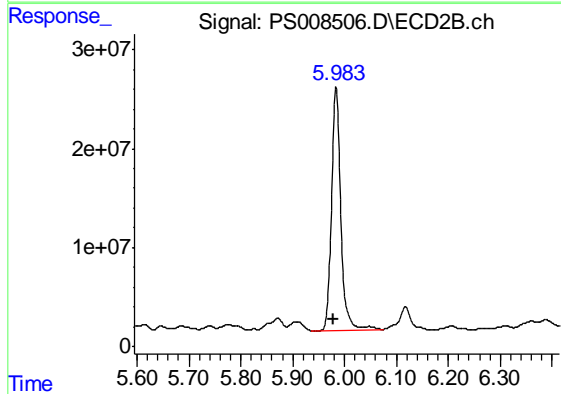
#2 3,5-DICHLOROBENZOIC ACID

R.T.: 5.170 min
 Delta R.T.: 0.036 min
 Response: 149060655
 Conc: 106.69 ng/ml

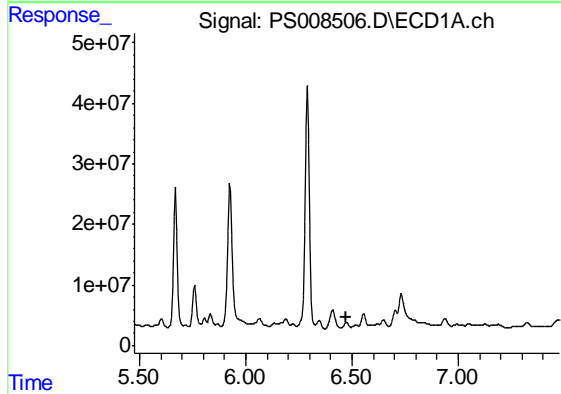


#4 2,4-DCAA
 R.T.: 6.290 min
 Delta R.T.: 0.007 min
 Response: 523902241
 Conc: 296.71 ng/ml

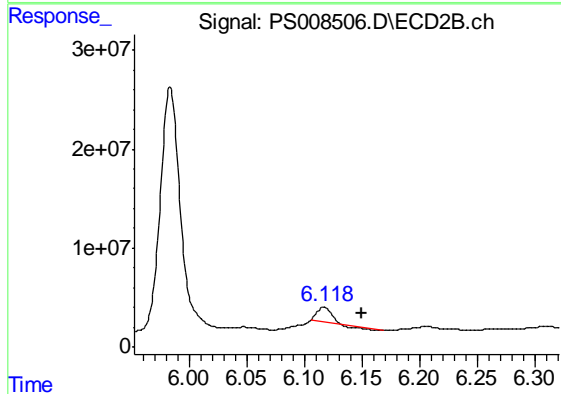
Instrument :
 ECD_S
 ClientSampleId :
 93OAK-AVE-COMP



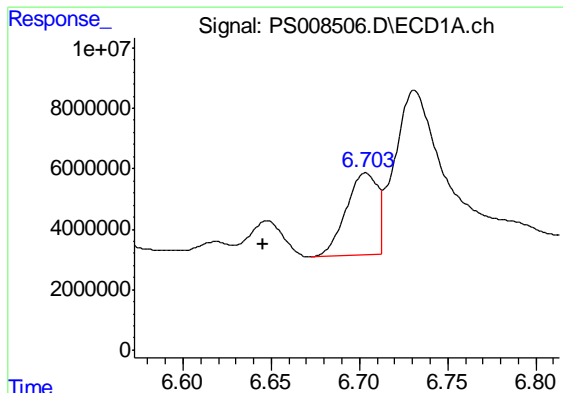
#4 2,4-DCAA
 R.T.: 5.984 min
 Delta R.T.: 0.004 min
 Response: 305498658
 Conc: 322.44 ng/ml



#5 DICAMBA
 R.T.: 0.000 min
 Exp R.T. : 6.476 min
 Response: 0
 Conc: N.D.



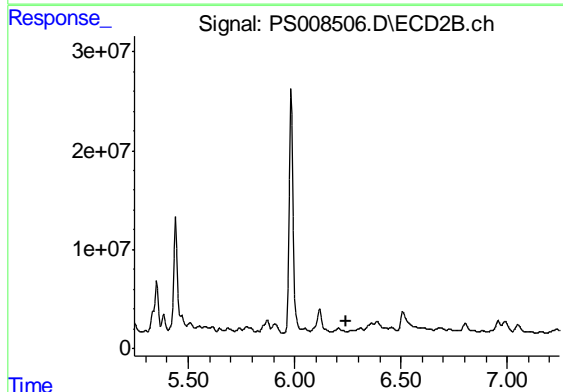
#5 DICAMBA
 R.T.: 6.117 min
 Delta R.T.: -0.032 min
 Response: 10398302
 Conc: 2.60 ng/ml



#6 MCPP

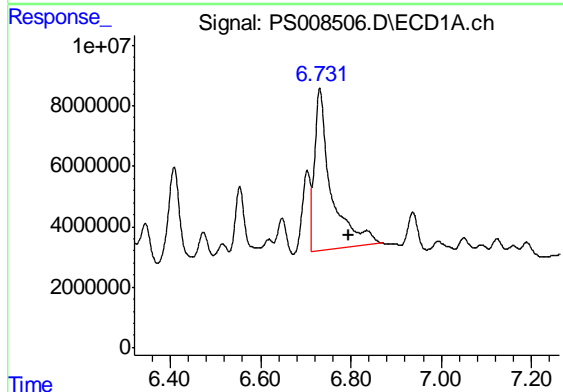
R.T.: 6.704 min
 Delta R.T.: 0.058 min
 Response: 34039473
 Conc: 6.68 ug/ml

Instrument :
 ECD_S
 ClientSampleId :
 93OAK-AVE-COMP



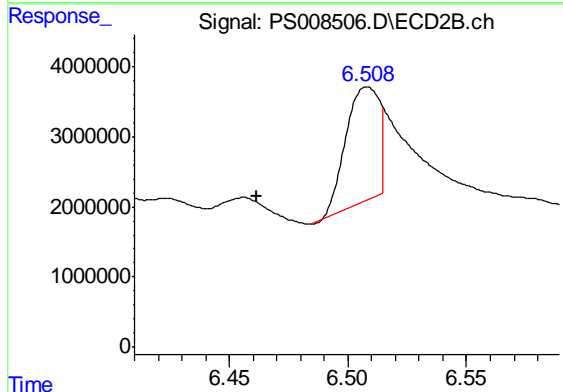
#6 MCPP

R.T.: 0.000 min
 Exp R.T. : 6.246 min
 Response: 0
 Conc: N.D.



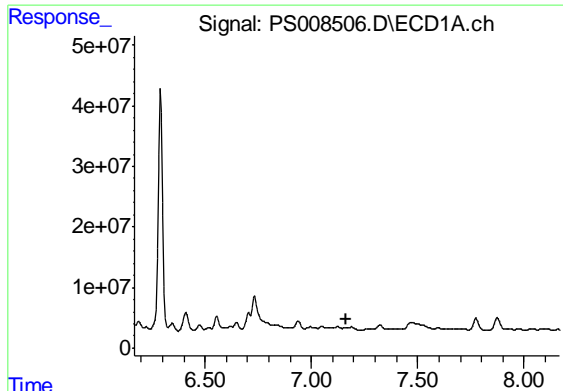
#7 MCPA

R.T.: 6.731 min
 Delta R.T.: -0.063 min
 Response: 138013395
 Conc: 18.89 ug/ml



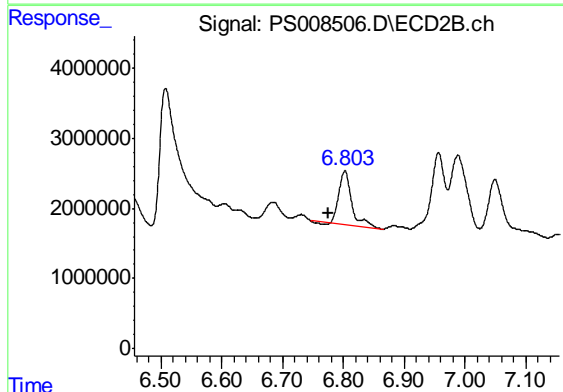
#7 MCPA

R.T.: 6.508 min
 Delta R.T.: 0.047 min
 Response: 16230931
 Conc: 3.80 ug/ml

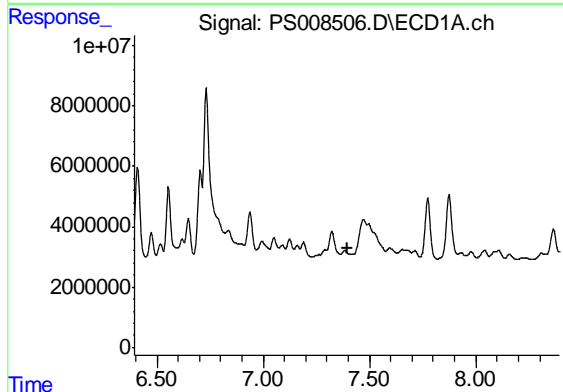


#8 DICHLORPROP
 R.T.: 0.000 min
 Exp R.T. : 7.167 min
 Response: 0
 Conc: N.D.

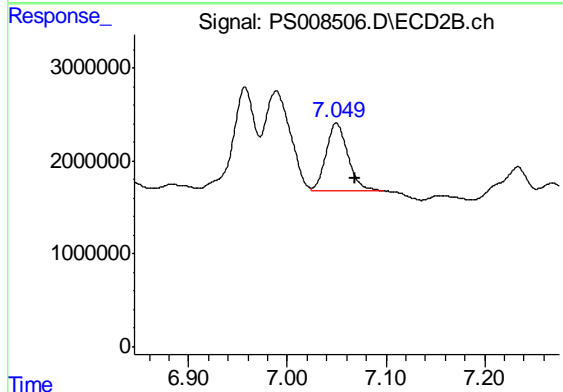
Instrument :
 ECD_S
 ClientSampleId :
 93OAK-AVE-COMP



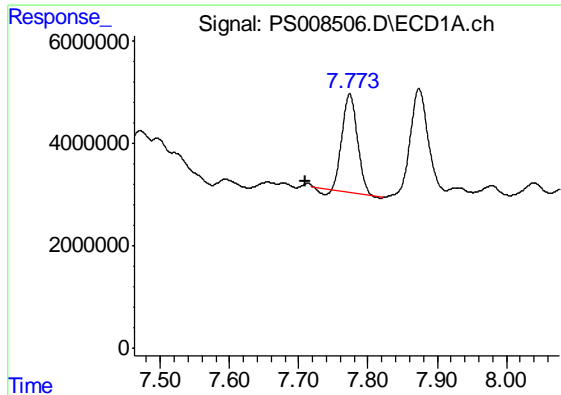
#8 DICHLORPROP
 R.T.: 6.803 min
 Delta R.T.: 0.028 min
 Response: 11199375
 Conc: 11.59 ng/ml



#9 2,4-D
 R.T.: 0.000 min
 Exp R.T. : 7.394 min
 Response: 0
 Conc: N.D.

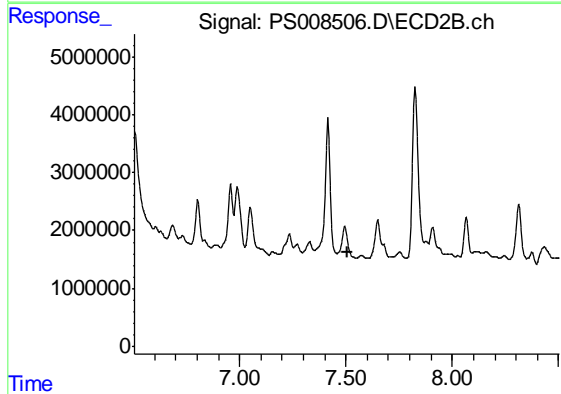


#9 2,4-D
 R.T.: 7.050 min
 Delta R.T.: -0.019 min
 Response: 11182420
 Conc: 9.54 ng/ml

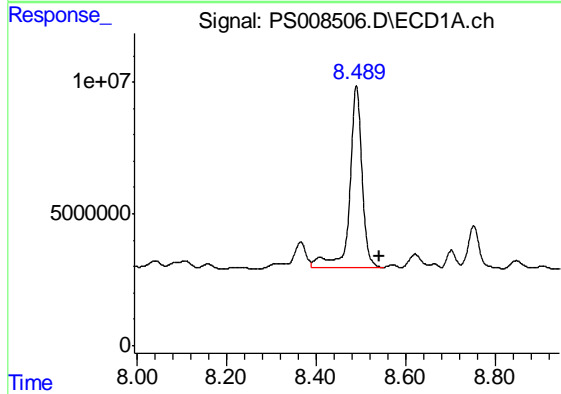


#10 Pentachlorophenol
 R.T.: 7.774 min
 Delta R.T.: 0.064 min
 Response: 28769522
 Conc: 1.18 ng/ml

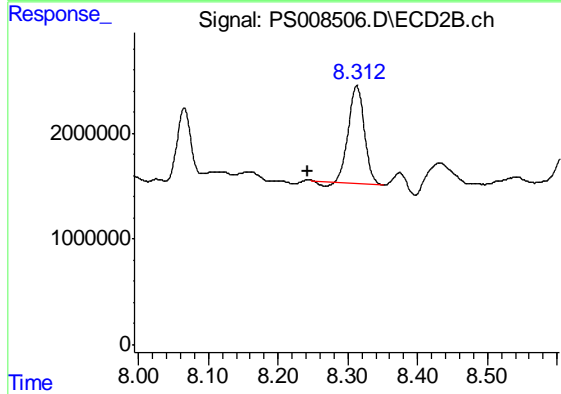
Instrument :
 ECD_S
 ClientSampleId :
 93OAK-AVE-COMP



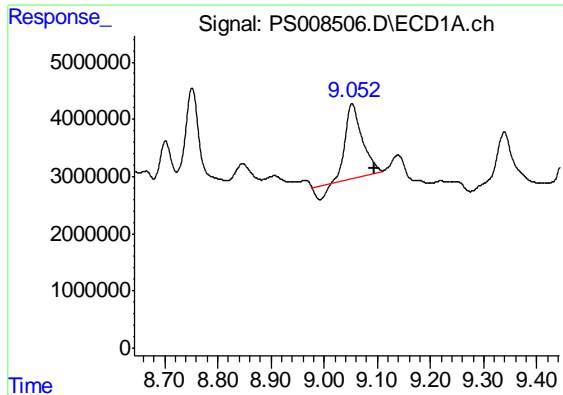
#10 Pentachlorophenol
 R.T.: 0.000 min
 Exp R.T. : 7.505 min
 Response: 0
 Conc: N.D.



#12 2,4,5-T
 R.T.: 8.490 min
 Delta R.T.: -0.051 min
 Response: 132566635
 Conc: 14.37 ng/ml



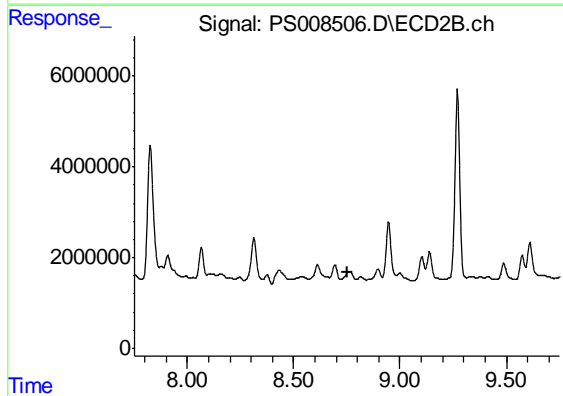
#12 2,4,5-T
 R.T.: 8.313 min
 Delta R.T.: 0.069 min
 Response: 14491821
 Conc: 2.74 ng/ml



#13 2,4-DB

R.T.: 9.053 min
Delta R.T.: -0.042 min
Response: 26707372
Conc: 19.27 ng/ml

Instrument :
ECD_S
ClientSampleId :
93OAK-AVE-COMP



#13 2,4-DB

R.T.: 0.000 min
Exp R.T. : 8.751 min
Response: 0
Conc: N.D.