

Data Path : Z:\pestpcbsrv\HPCHEM1\ECD_S\Data\PS012323\
 Data File : PS021843.D
 Signal(s) : Signal #1: ECD1A.ch Signal #2: ECD2B.ch
 Acq On : 23 Jan 2023 13:12
 Operator : AR\AJ
 Sample : 01214-15RE
 Misc :
 ALS Vial : 7 Sample Multiplier: 1

Instrument :
 ECD_S
 ClientSampleId :

Integration File signal 1: autoint1.e
 Integration File signal 2: autoint2.e
 Quant Time: Jan 23 20:54:42 2023
 Quant Method : Z:\pestpcbsrv\HPCHEM1\ECD_S\Method\PS010923.M
 Quant Title : 8080.M
 QLast Update : Tue Jan 10 10:34:52 2023
 Response via : Initial Calibration
 Integrator: ChemStation

Volume Inj. : 2 µl
 Signal #1 Phase : Rtx-CLPesticides Signal #2 Phase: Rtx-CLPesticides2
 Signal #1 Info : 30M x 0.32mm x0.5 Signal #2 Info : 30M x 0.32mm x 0.25µm

Compound	RT#1	RT#2	Resp#1	Resp#2	ng/ml	ng/ml
System Monitoring Compounds						
4) S 2,4-DCAA	6.385	6.807	12493.6E6	1193.6E6	4488.328	664.338 #
Target Compounds						
1) T Dalapon	2.430f	2.518	81229947	695.4E6	28.714	270.150 #
2) T 3,5-DICHL...	5.738	5.984	208.4E6	121.6E6	53.862	44.118
3) T 4-Nitroph...	6.247	6.440	167.2E6	39222523	114.726	35.780 #
7) T MCPA	6.824	7.281	111.1E6	37645222	8.603	4.151 #
8) T DICHLORPROP	7.151	7.566	806.1E6	1982723	249.947	<MDL #
9) T 2,4-D	7.308	7.904	85749677	144.6E6	22.079	57.220 #
11) T 2,4,5-TP ...	8.091	8.634f	2802.1E6	27277.5E6	152.071	2294.087 #
12) T 2,4,5-T	8.333	9.076	848.5E6	547.4E6	44.018	49.003
13) T 2,4-DB	8.863	9.575	11699.4E6	8688.0E6	3695.989	5798.720 #
14) T DINOSEB	9.848f	9.876	113305.0E6	832.6E6	6903.109	100.179 #
15) T Picloram	9.742	10.875	2956277	10908.3E6	<MDL	615.990 #
16) T DCPA	0.000	10.875f	0	10908.3E6	N.D.	782.529

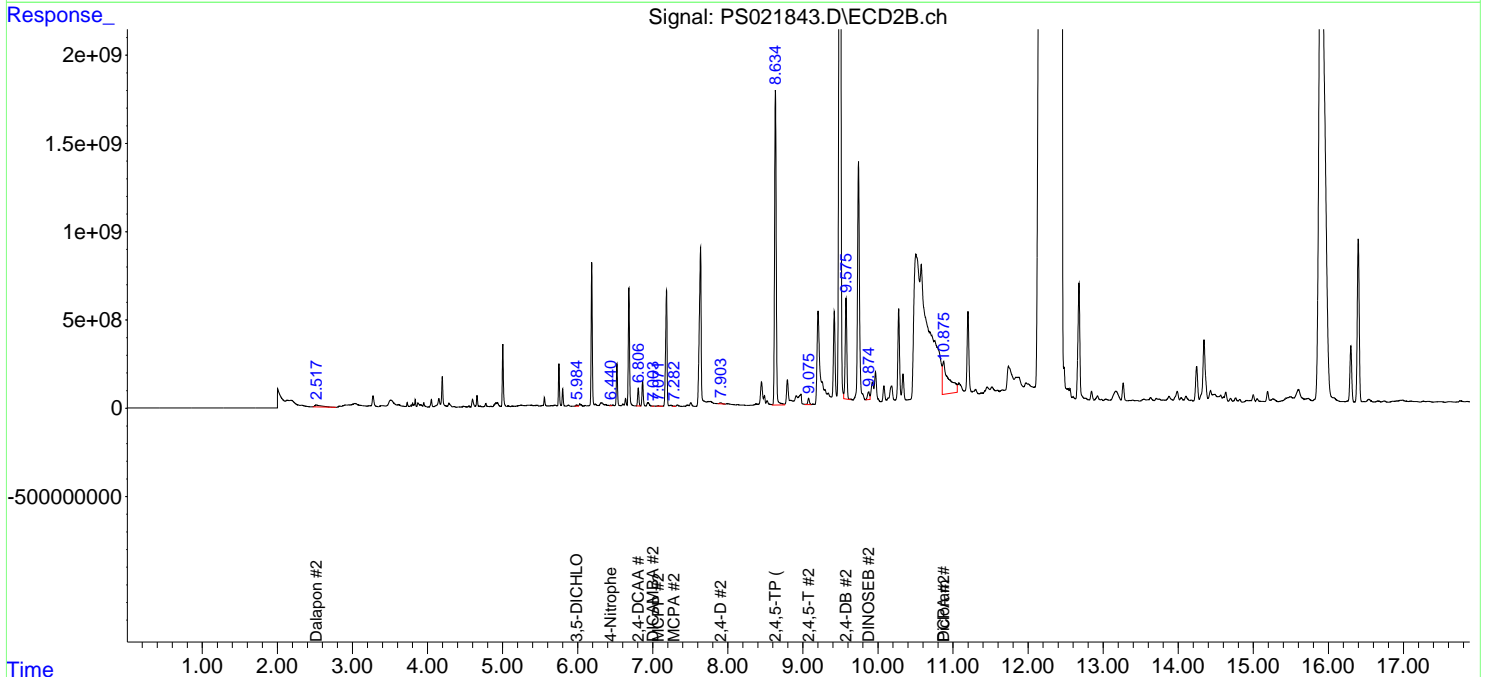
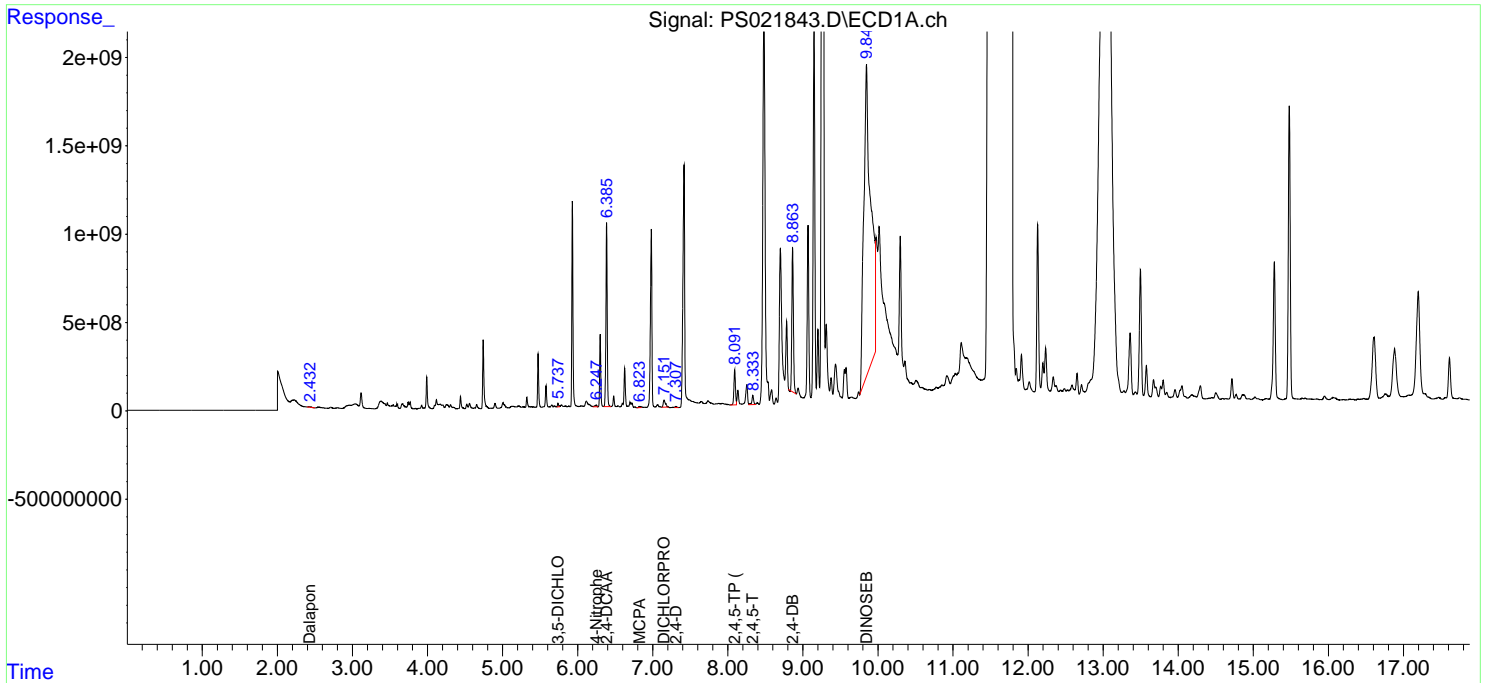
(f)=RT Delta > 1/2 Window (#)=Amounts differ by > 25% (m)=manual int.

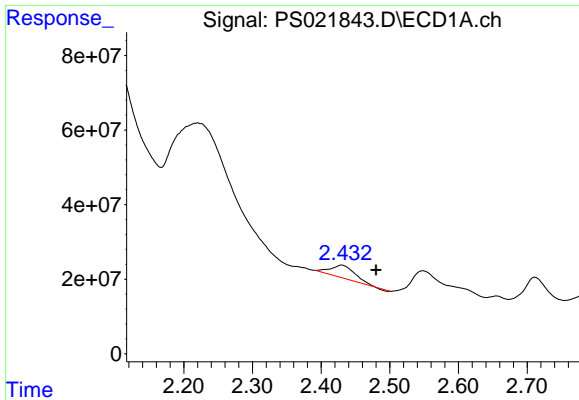
Data Path : Z:\pestpcbsrv\HPCHEM1\ECD_S\Data\PS012323\
Data File : PS021843.D
Signal(s) : Signal #1: ECD1A.ch Signal #2: ECD2B.ch
Acq On : 23 Jan 2023 13:12
Operator : AR\AJ
Sample : 01214-15RE
Misc :
ALS Vial : 7 Sample Multiplier: 1

Instrument :
ECD_S
ClientSampleId :

Integration File signal 1: autoint1.e
Integration File signal 2: autoint2.e
Quant Time: Jan 23 20:54:42 2023
Quant Method : Z:\pestpcbsrv\HPCHEM1\ECD_S\Method\PS010923.M
Quant Title : 8080.M
QLast Update : Tue Jan 10 10:34:52 2023
Response via : Initial Calibration
Integrator: ChemStation

Volume Inj. : 2 µl
Signal #1 Phase : Rtx-CLPesticides Signal #2 Phase: Rtx-CLPesticides2
Signal #1 Info : 30M x 0.32mm x 0.5 Signal #2 Info : 30M x 0.32mm x 0.25µm

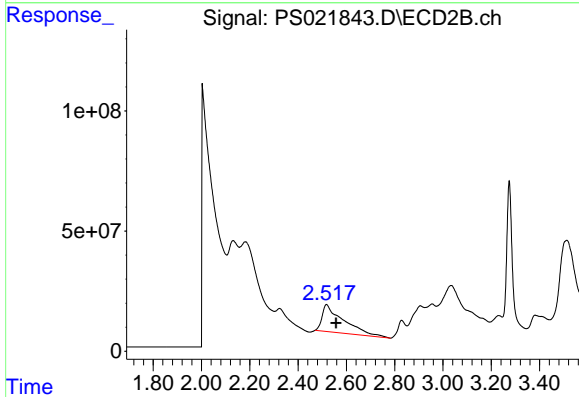




#1 Dalapon

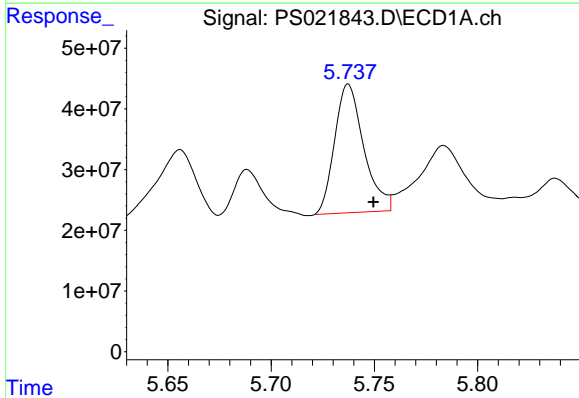
R.T.: 2.430 min
 Delta R.T.: -0.050 min
 Response: 81229947
 Conc: 28.71 ng/ml

Instrument :
 ECD_S
 ClientSampleId :



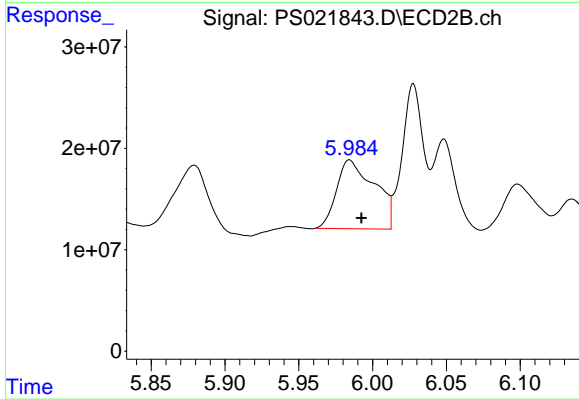
#1 Dalapon

R.T.: 2.518 min
 Delta R.T.: -0.039 min
 Response: 695442957
 Conc: 270.15 ng/ml



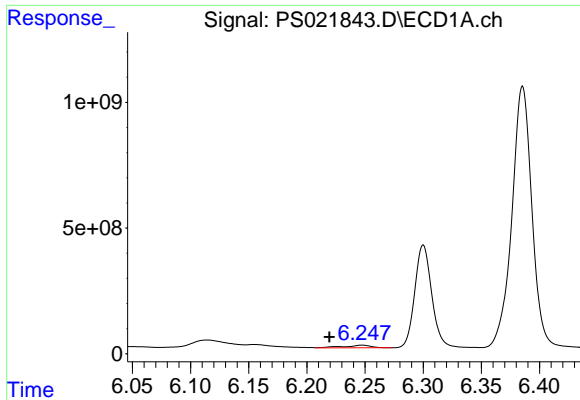
#2 3,5-DICHLOROBENZOIC ACID

R.T.: 5.738 min
 Delta R.T.: -0.012 min
 Response: 208352771
 Conc: 53.86 ng/ml



#2 3,5-DICHLOROBENZOIC ACID

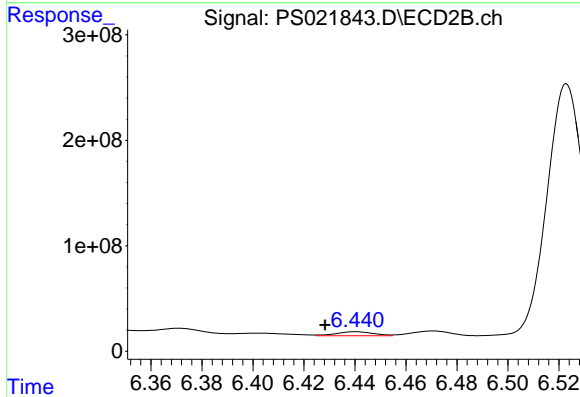
R.T.: 5.984 min
 Delta R.T.: -0.008 min
 Response: 121581359
 Conc: 44.12 ng/ml



#3 4-Nitrophenol

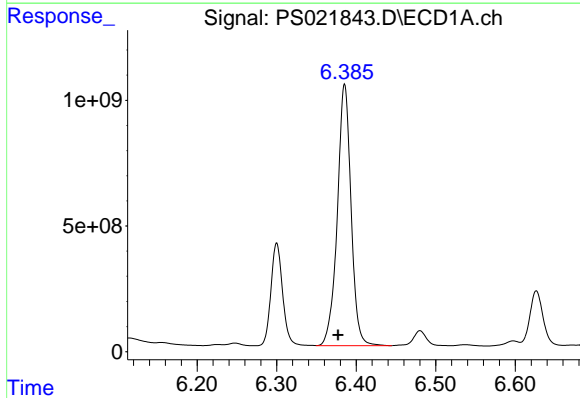
R.T.: 6.247 min
 Delta R.T.: 0.028 min
 Response: 167227281
 Conc: 114.73 ng/ml

Instrument :
 ECD_S
 ClientSampleId :



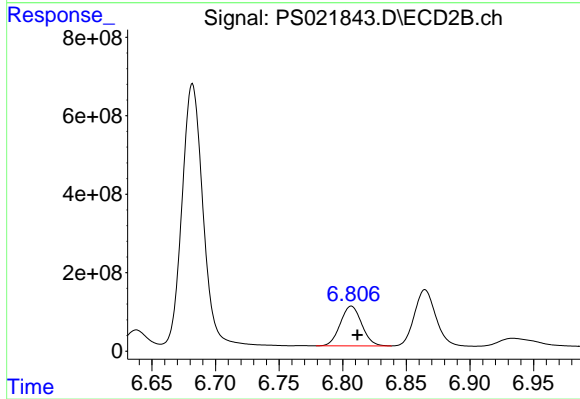
#3 4-Nitrophenol

R.T.: 6.440 min
 Delta R.T.: 0.012 min
 Response: 39222523
 Conc: 35.78 ng/ml



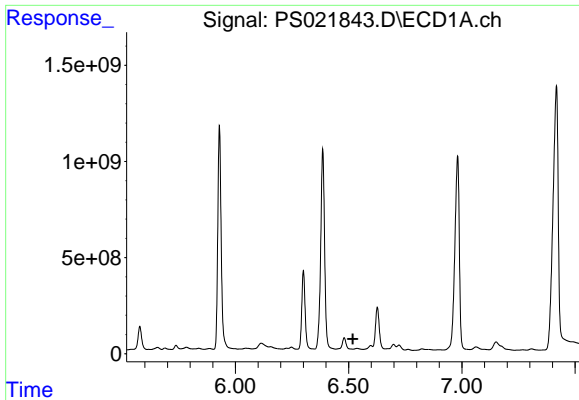
#4 2,4-DCAA

R.T.: 6.385 min
 Delta R.T.: 0.008 min
 Response: 12493560906
 Conc: 4488.33 ng/ml



#4 2,4-DCAA

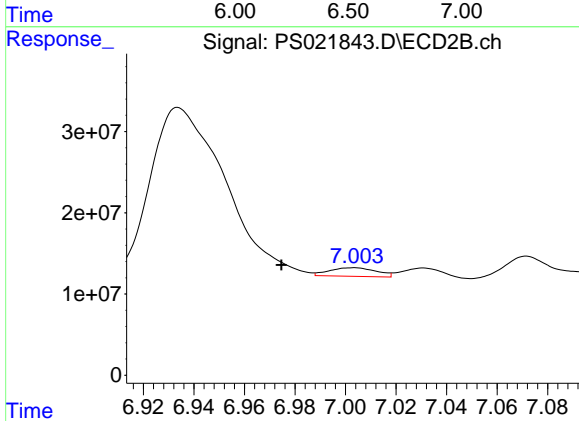
R.T.: 6.807 min
 Delta R.T.: -0.005 min
 Response: 1193608465
 Conc: 664.34 ng/ml



#5 DICAMBA

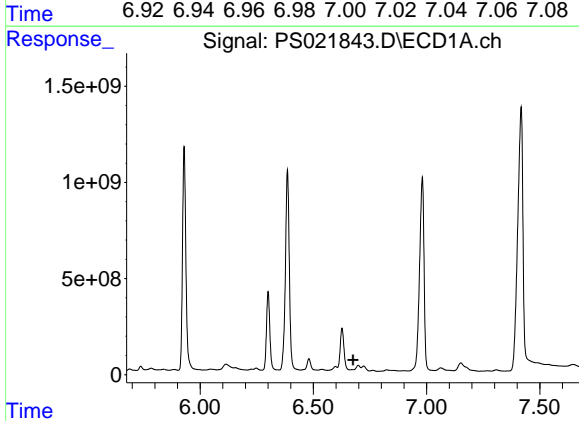
R.T.: 6.537 min
 Delta R.T.: 0.018 min
 Response: -357993961
 Conc: N.D.

Instrument :
 ECD_S
 ClientSampleId :



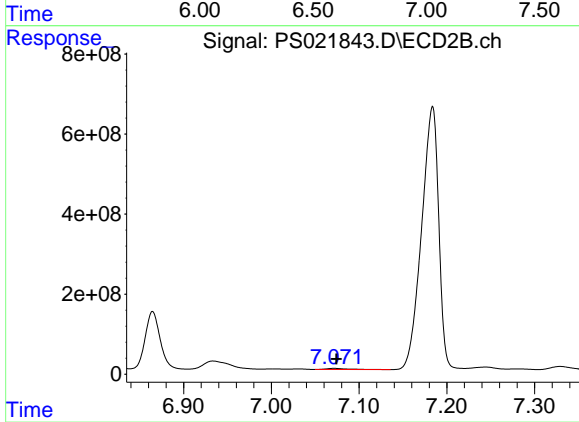
#5 DICAMBA

R.T.: 7.003 min
 Delta R.T.: 0.029 min
 Response: 13804328
 Conc: 1.62 ng/ml



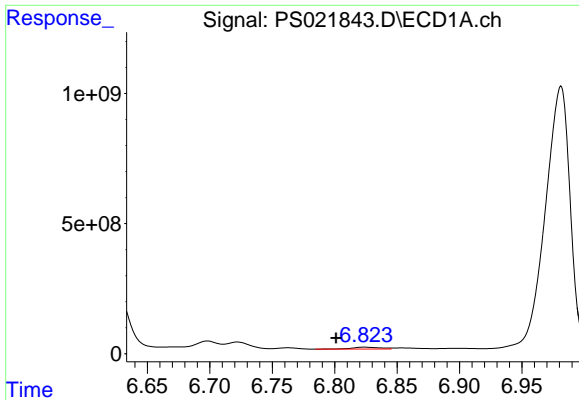
#6 MCP

R.T.: 6.698 min
 Delta R.T.: 0.023 min
 Response: -183556831
 Conc: N.D.



#6 MCP

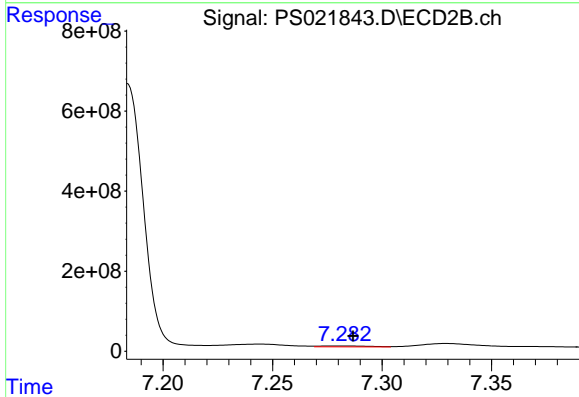
R.T.: 7.072 min
 Delta R.T.: -0.002 min
 Response: 49516361
 Conc: 7.47 ug/ml



#7 MCPA

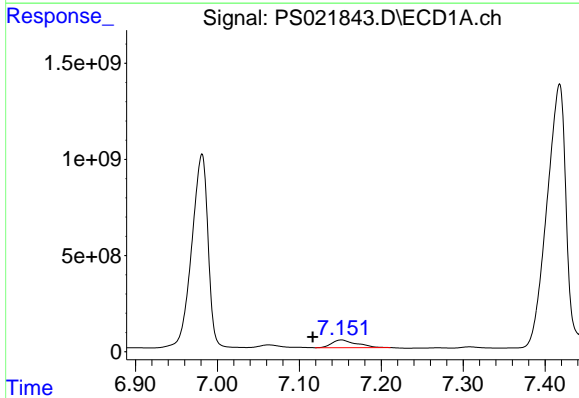
R.T.: 6.824 min
 Delta R.T.: 0.023 min
 Response: 111124477
 Conc: 8.60 ug/ml

Instrument :
 ECD_S
 ClientSampleId :



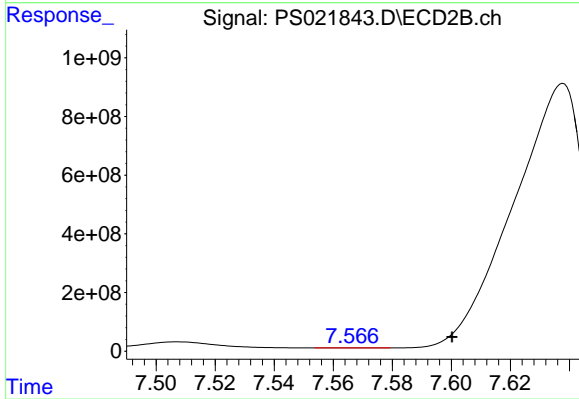
#7 MCPA

R.T.: 7.281 min
 Delta R.T.: -0.005 min
 Response: 37645222
 Conc: 4.15 ug/ml



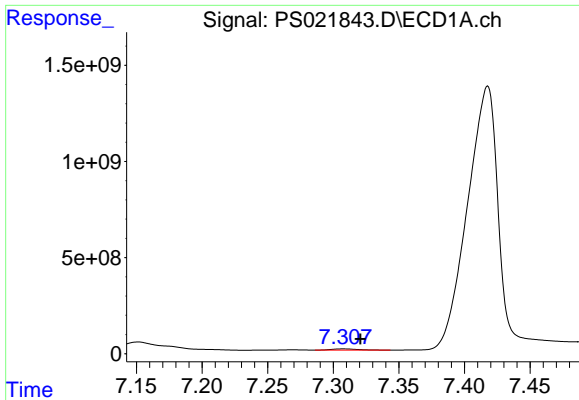
#8 DICHLORPROP

R.T.: 7.151 min
 Delta R.T.: 0.035 min
 Response: 806147251
 Conc: 249.95 ng/ml



#8 DICHLORPROP

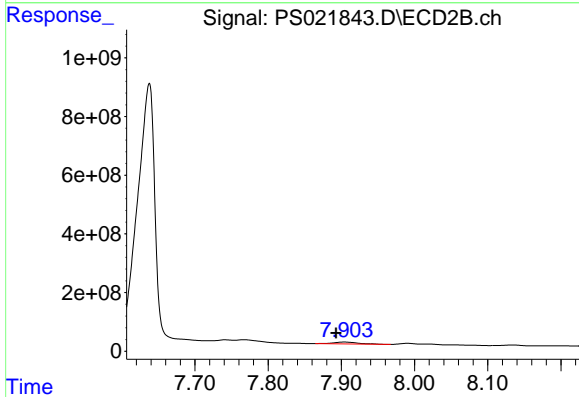
R.T.: 7.566 min
 Delta R.T.: -0.034 min
 Response: 1982723
 Conc: N.D.



#9 2,4-D

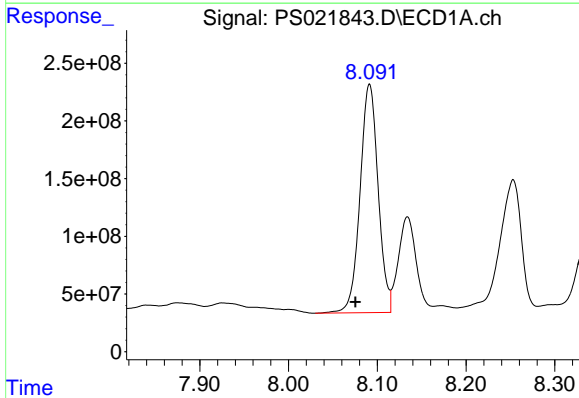
R.T.: 7.308 min
 Delta R.T.: -0.013 min
 Response: 85749677
 Conc: 22.08 ng/ml

Instrument :
 ECD_S
 ClientSampleId :



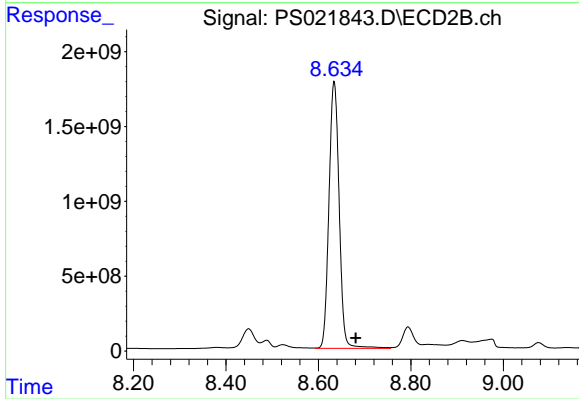
#9 2,4-D

R.T.: 7.904 min
 Delta R.T.: 0.011 min
 Response: 144566604
 Conc: 57.22 ng/ml



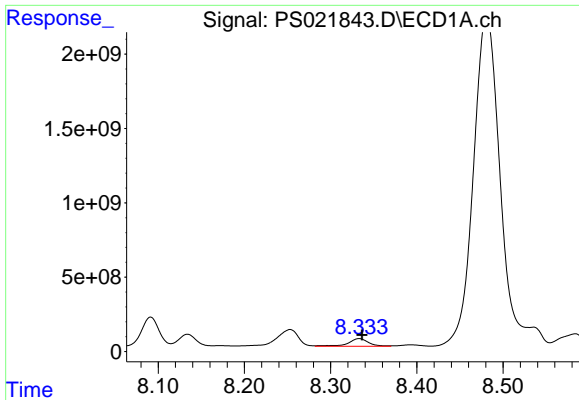
#11 2,4,5-TP (SILVEX)

R.T.: 8.091 min
 Delta R.T.: 0.016 min
 Response: 2802076051
 Conc: 152.07 ng/ml



#11 2,4,5-TP (SILVEX)

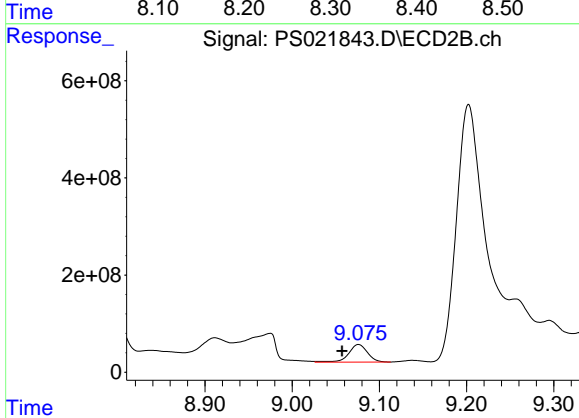
R.T.: 8.634 min
 Delta R.T.: -0.047 min
 Response: 27277515250
 Conc: 2294.09 ng/ml



#12 2,4,5-T

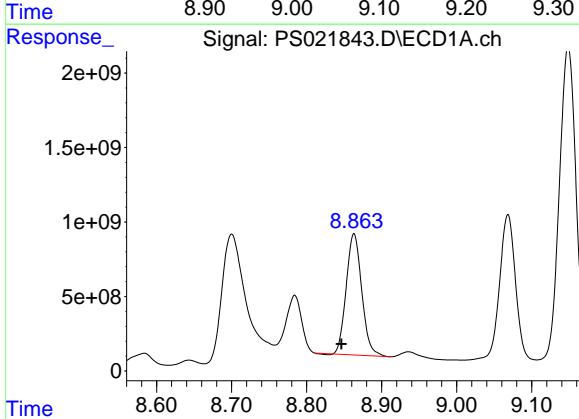
R.T.: 8.333 min
 Delta R.T.: -0.004 min
 Response: 848480531
 Conc: 44.02 ng/ml

Instrument :
 ECD_S
 ClientSampleId :



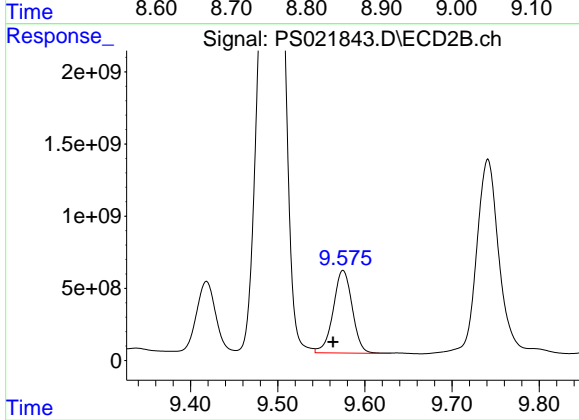
#12 2,4,5-T

R.T.: 9.076 min
 Delta R.T.: 0.019 min
 Response: 547362059
 Conc: 49.00 ng/ml



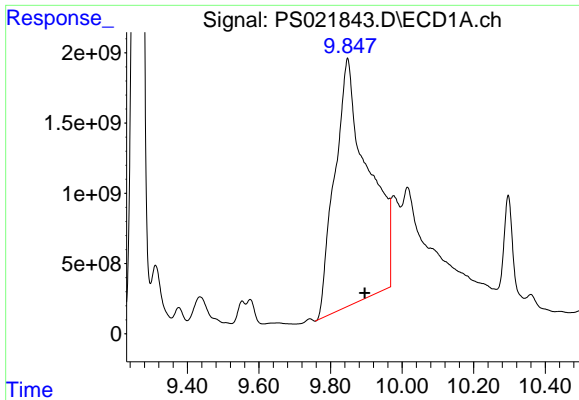
#13 2,4-DB

R.T.: 8.863 min
 Delta R.T.: 0.017 min
 Response: 11699397444
 Conc: 3695.99 ng/ml



#13 2,4-DB

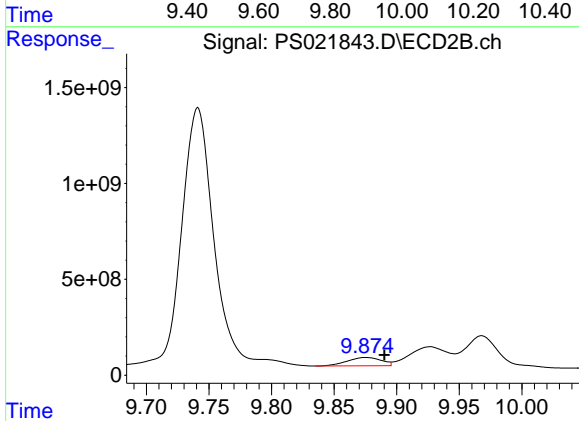
R.T.: 9.575 min
 Delta R.T.: 0.011 min
 Response: 8687974526
 Conc: 5798.72 ng/ml



#14 DINOSEB

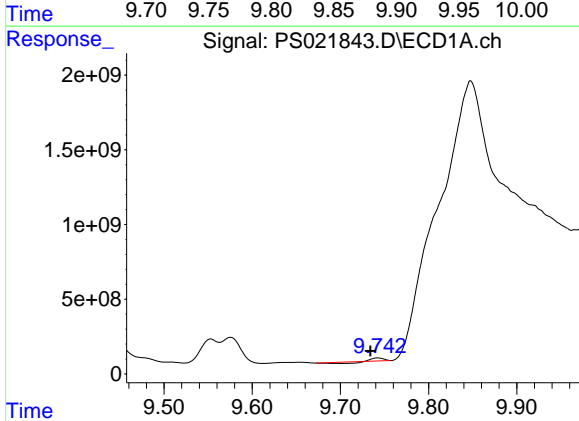
R.T.: 9.848 min
 Delta R.T.: -0.048 min
 Response: 1.13305e+011
 Conc: 6903.11 ng/m

Instrument :
 ECD_S
 ClientSampleId :



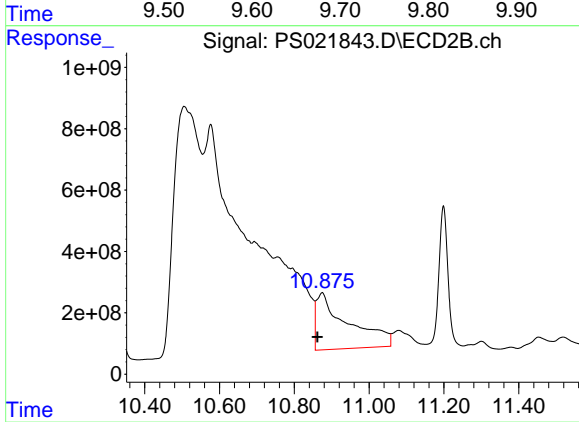
#14 DINOSEB

R.T.: 9.876 min
 Delta R.T.: -0.015 min
 Response: 832568264
 Conc: 100.18 ng/ml



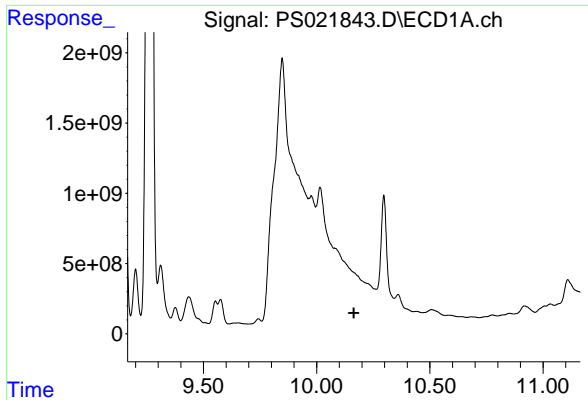
#15 Picloram

R.T.: 9.742 min
 Delta R.T.: 0.008 min
 Response: 2956277
 Conc: N.D.



#15 Picloram

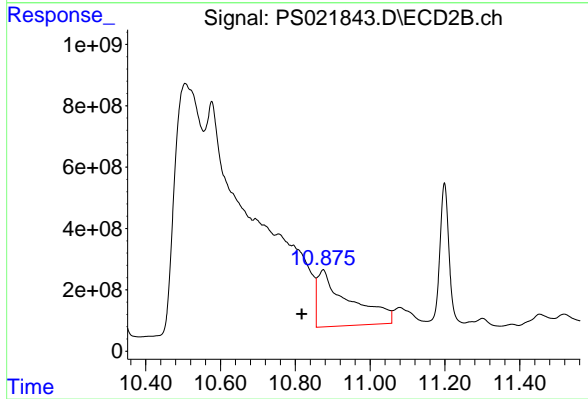
R.T.: 10.875 min
 Delta R.T.: 0.013 min
 Response: 10908252977
 Conc: 615.99 ng/ml



#16 DCPA

R.T.: 0.000 min
 Exp R.T.: 10.165 min
 Response: 0
 Conc: N.D.

Instrument :
 ECD_S
 ClientSampleId :



#16 DCPA

R.T.: 10.875 min
 Delta R.T.: 0.057 min
 Response: 10908252977
 Conc: 782.53 ng/ml