

Data Path : Z:\pestpcbsrv\HPCHEM1\ECD_S\Data\PS012324\
 Data File : PS025626.D
 Signal(s) : Signal #1: ECD1A.ch Signal #2: ECD2B.ch
 Acq On : 23 Jan 2024 16:23
 Operator : AR\AJ
 Sample : PB158583BL
 Misc :
 ALS Vial : 4 Sample Multiplier: 1

Instrument :
 ECD_S
ClientSampleId :
 PB158583BL

Manual Integrations
APPROVED
 Reviewed By :Abdul Mirza 01/24/2024
 Supervised By :Ankita Jodhani 01/24/2024

Integration File signal 1: autoint1.e
 Integration File signal 2: autoint2.e
 Quant Time: Jan 24 00:00:16 2024
 Quant Method : Z:\pestpcbsrv\HPCHEM1\ECD_S\Method\PS011124.M
 Quant Title : 8080.M
 QLast Update : Thu Jan 11 16:45:24 2024
 Response via : Initial Calibration
 Integrator: ChemStation

Volume Inj. : 2 µl
 Signal #1 Phase : Rtx-CLPesticides Signal #2 Phase: Rtx-CLPesticides2
 Signal #1 Info : 30M x 0.32mm x0.5 Signal #2 Info : 30M x 0.32mm x 0.25µm

Compound	RT#1	RT#2	Resp#1	Resp#2	ng/ml	ng/ml

System Monitoring Compounds						
4) S 2,4-DCAA	6.349	6.758	823.4E6	435.3E6	552.846m	566.962

Target Compounds

(f)=RT Delta > 1/2 Window (#)=Amounts differ by > 25% (m)=manual int.

Data Path : Z:\pestpcbsrv\HPCHEM1\ECD_S\Data\PS012324\
Data File : PS025626.D
Signal(s) : Signal #1: ECD1A.ch Signal #2: ECD2B.ch
Acq On : 23 Jan 2024 16:23
Operator : AR\AJ
Sample : PB158583BL
Misc :
ALS Vial : 4 Sample Multiplier: 1

Instrument :

ECD_S

ClientSampleId :

PB158583BL

Manual Integrations

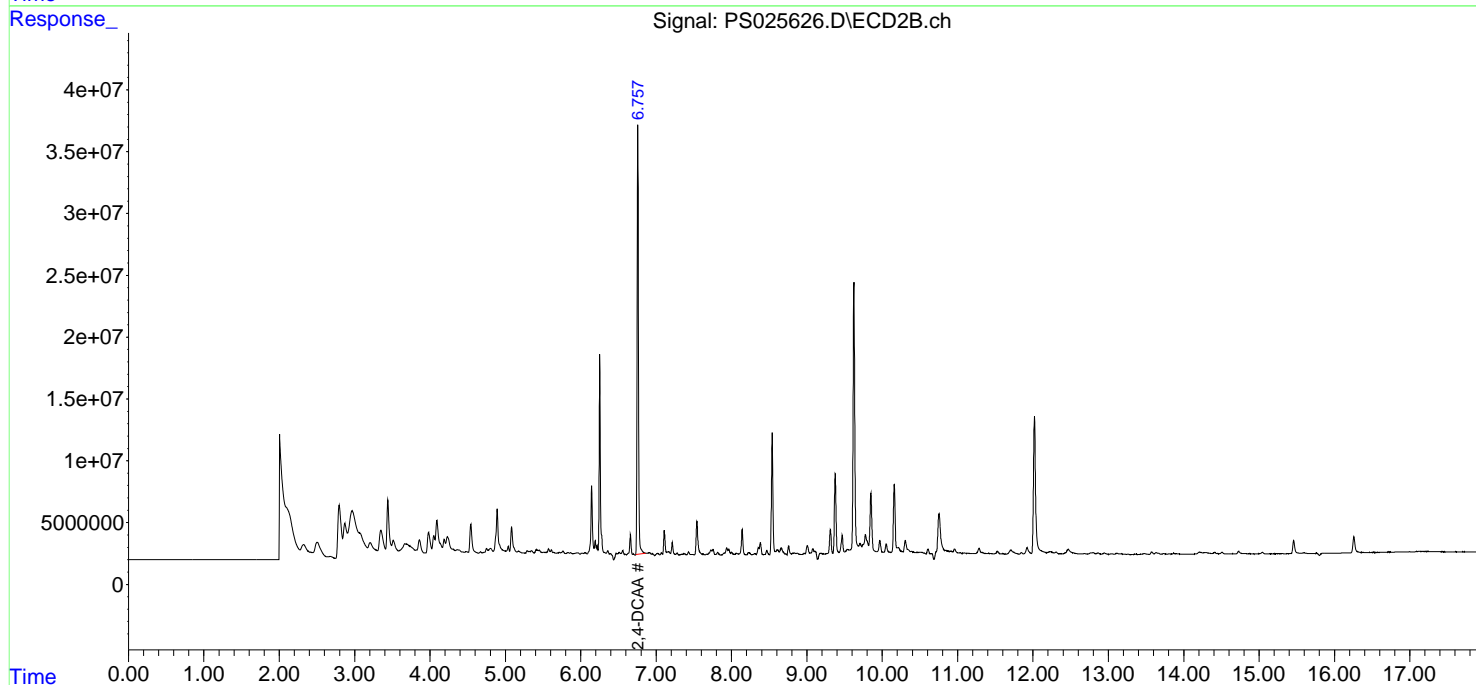
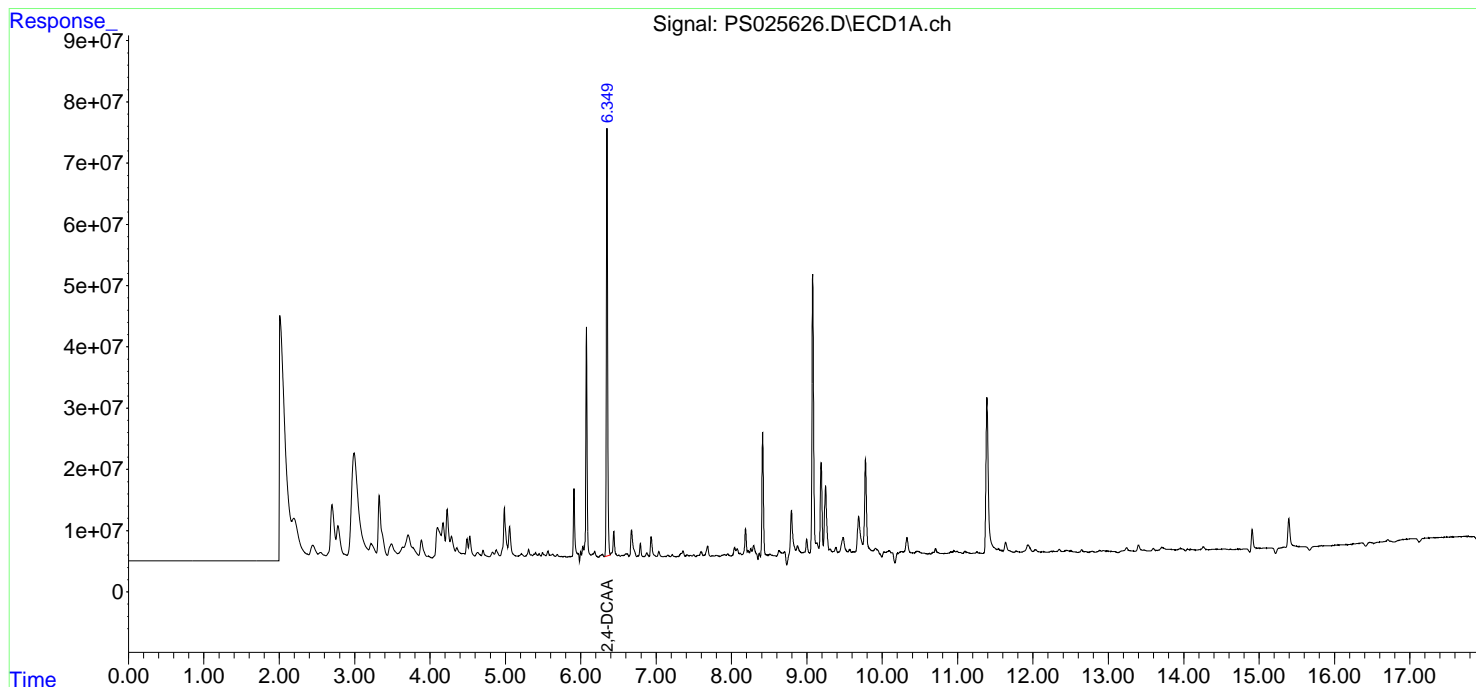
APPROVED

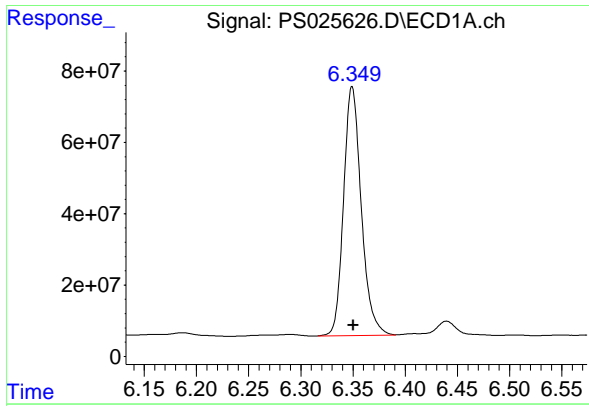
Reviewed By :Abdul Mirza 01/24/2024

Supervised By :Ankita Jodhani 01/24/2024

Integration File signal 1: autoint1.e
Integration File signal 2: autoint2.e
Quant Time: Jan 24 00:00:16 2024
Quant Method : Z:\pestpcbsrv\HPCHEM1\ECD_S\Method\PS011124.M
Quant Title : 8080.M
QLast Update : Thu Jan 11 16:45:24 2024
Response via : Initial Calibration
Integrator: ChemStation

Volume Inj. : 2 µl
Signal #1 Phase : Rtx-CLPesticides Signal #2 Phase: Rtx-CLPesticides2
Signal #1 Info : 30M x 0.32mm x0.5 Signal #2 Info : 30M x 0.32mm x 0.25µm





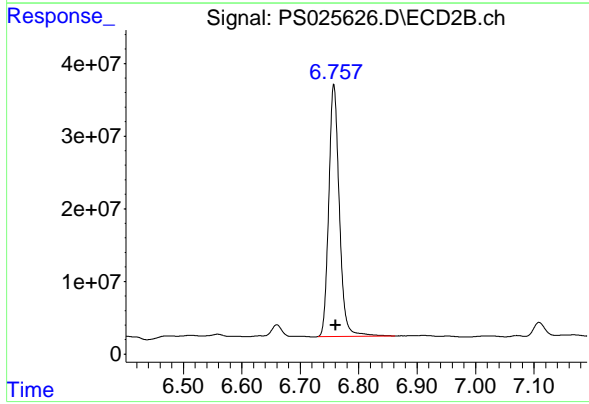
#4 2,4-DCAA

R.T.: 6.349 min
 Delta R.T.: -0.002 min
 Response: 823443238
 Conc: 552.85 ng/ml

Instrument :
 ECD_S
 ClientSampleId :
 PB158583BL

Manual Integrations
 APPROVED

Reviewed By :Abdul Mirza 01/24/2024
 Supervised By :Ankita Jodhani 01/24/2024



#4 2,4-DCAA

R.T.: 6.758 min
 Delta R.T.: -0.003 min
 Response: 435313506
 Conc: 566.96 ng/ml