

Data Path : Z:\pestpcbsrv\HPCHEM1\ECD\_S\Data\PS012420\  
 Data File : PS008543.D  
 Signal(s) : Signal #1: ECD1A.ch Signal #2: ECD2B.ch  
 Acq On : 25 Jan 2020 01:04  
 Operator : DD\AJ  
 Sample : PB126319BL  
 Misc :  
 ALS Vial : 20 Sample Multiplier: 1

Instrument :  
 ECD\_S  
 ClientSampleId :  
 PB126319BL

Integration File signal 1: autoint1.e  
 Integration File signal 2: autoint2.e  
 Quant Time: Jan 25 03:25:55 2020  
 Quant Method : Z:\pestpcbsrv\HPCHEM1\ECD\_S\Method\PS010820.M  
 Quant Title : 8080.M  
 QLast Update : Wed Jan 08 11:00:59 2020  
 Response via : Initial Calibration  
 Integrator: ChemStation

Volume Inj. : 2 µl  
 Signal #1 Phase : Rtx-CLPesticides Signal #2 Phase: Rtx-CLPesticides2  
 Signal #1 Info : 30M x 0.32mm x0.5 Signal #2 Info : 30M x 0.32mm x 0.25µm

	Compound	RT#1	RT#2	Resp#1	Resp#2	ng/ml	ng/ml
-----							
System Monitoring Compounds							
4) S	2,4-DCAA	6.269	5.964	1285.1E6	679.8E6	727.791	717.502
Target Compounds							
1) T	Dalapon	2.502	2.186	57418701	59166897	22.396	46.671 #
2) T	3,5-DICHL...	0.000	5.151	0	32950519	N.D.	23.584
6) T	MCPP	6.710	0.000	32591912	0	6.395	N.D. #
7) T	MCPA	6.818	0.000	34839402	0	4.768	N.D. #
8) T	DICHLORPROP	0.000	6.784	0	12840819	N.D.	13.291
9) T	2,4-D	7.449	7.030	53354500	10740055	29.330	9.162 #
10) T	Pentachlo...	7.753	0.000	30961736	0	1.274	N.D. #
12) T	2,4,5-T	8.473	0.000	64329792	0	6.972	N.D. #
13) T	2,4-DB	9.031	0.000	1939459	0	1.399	N.D. #
-----							

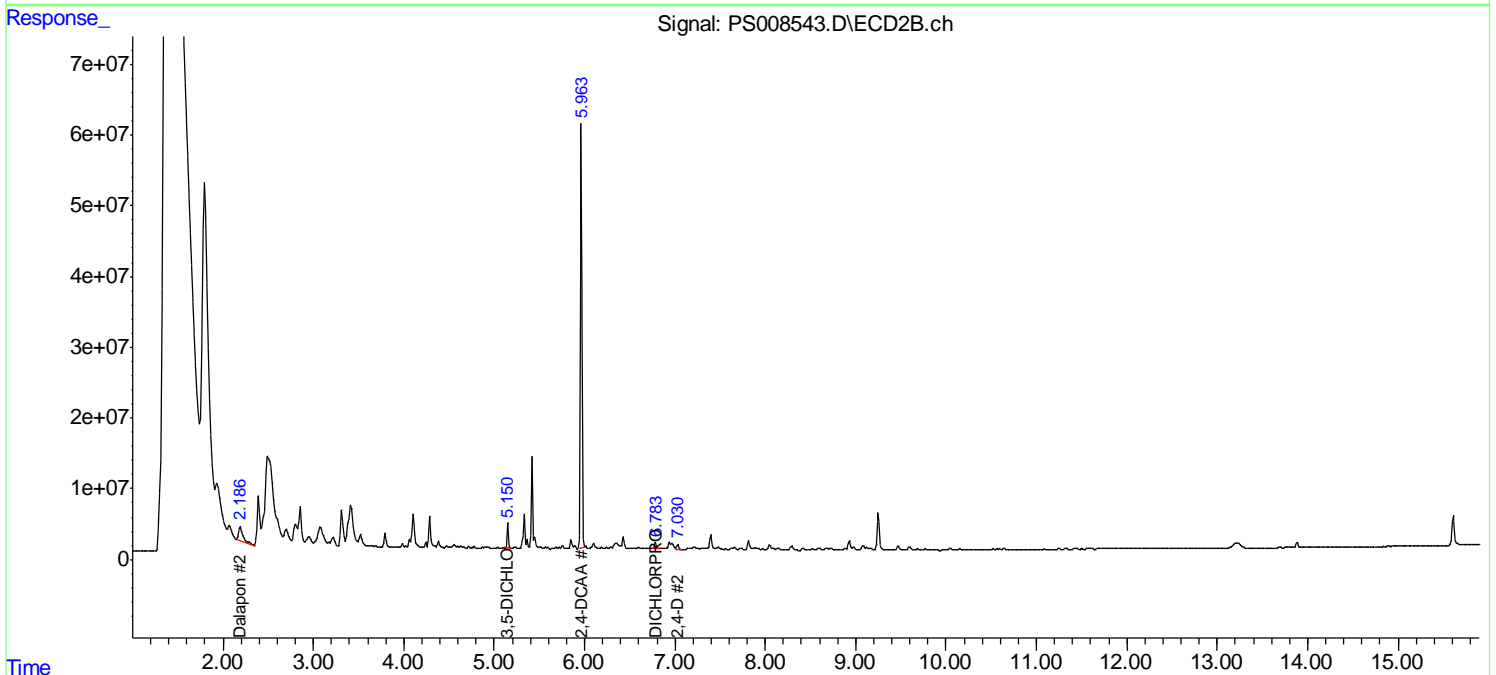
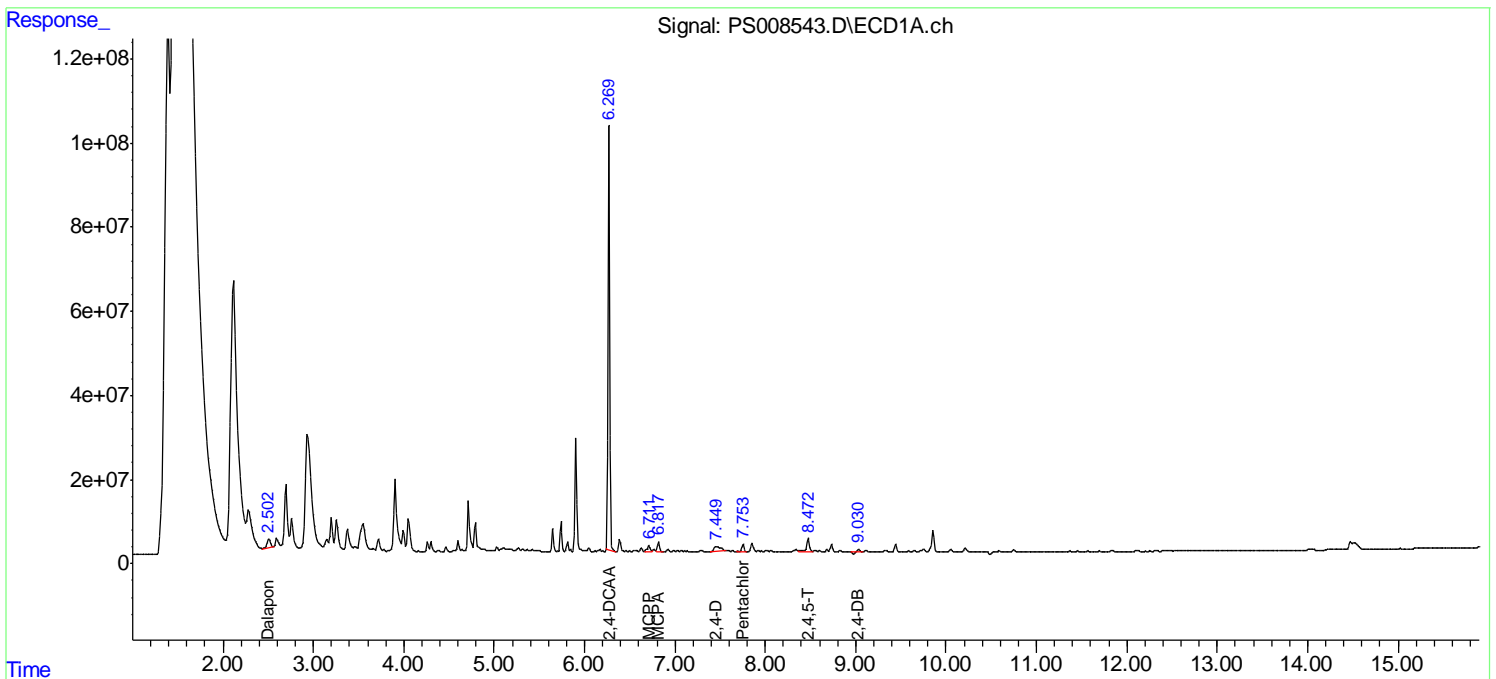
(f)=RT Delta > 1/2 Window (#)=Amounts differ by > 25% (m)=manual int.

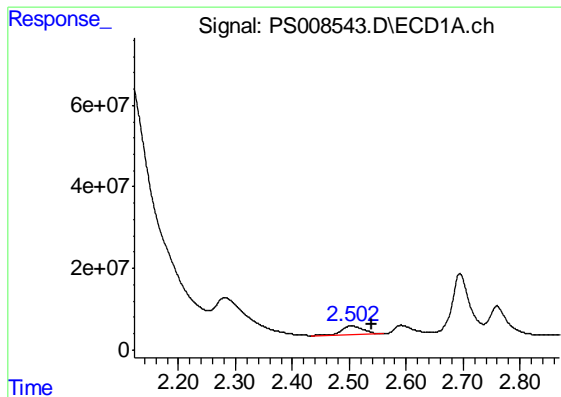
Data Path : Z:\pestpcbsrv\HPCHEM1\ECD\_S\Data\PS012420\  
 Data File : PS008543.D  
 Signal(s) : Signal #1: ECD1A.ch Signal #2: ECD2B.ch  
 Acq On : 25 Jan 2020 01:04  
 Operator : DD\AJ  
 Sample : PB126319BL  
 Misc :  
 ALS Vial : 20 Sample Multiplier: 1

Instrument :  
 ECD\_S  
 ClientSampled :  
 PB126319BL

Integration File signal 1: autoint1.e  
 Integration File signal 2: autoint2.e  
 Quant Time: Jan 25 03:25:55 2020  
 Quant Method : Z:\pestpcbsrv\HPCHEM1\ECD\_S\Method\PS010820.M  
 Quant Title : 8080.M  
 QLast Update : Wed Jan 08 11:00:59 2020  
 Response via : Initial Calibration  
 Integrator: ChemStation

Volume Inj. : 2 µl  
 Signal #1 Phase : Rtx-CLPesticides Signal #2 Phase: Rtx-CLPesticides2  
 Signal #1 Info : 30M x 0.32mm x0.5 Signal #2 Info : 30M x 0.32mm x 0.25µm

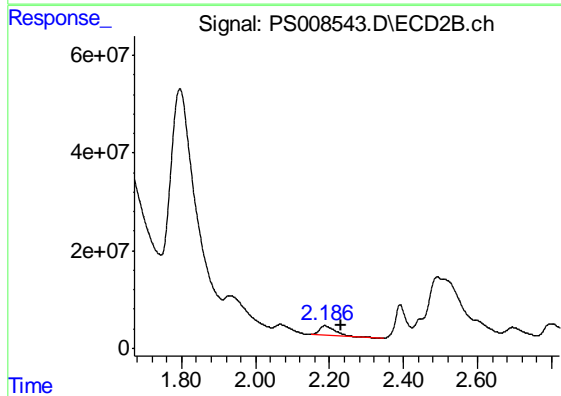




#1 Dalapon

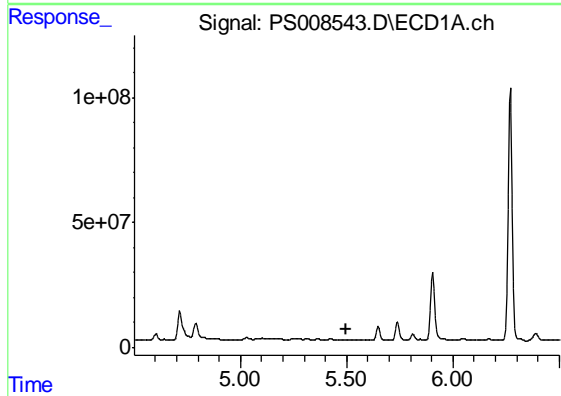
R.T.: 2.502 min  
 Delta R.T.: -0.038 min  
 Response: 57418701  
 Conc: 22.40 ng/ml

Instrument :  
 ECD\_S  
 ClientSampled :  
 PB126319BL



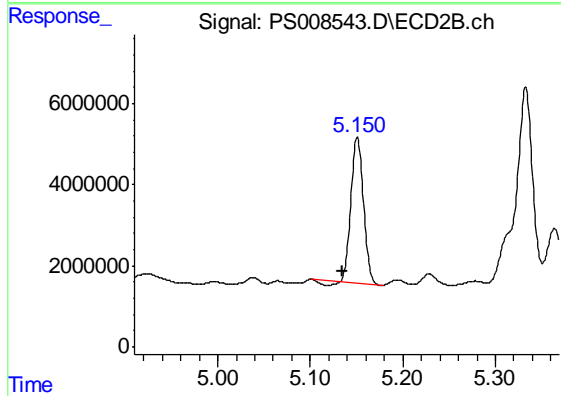
#1 Dalapon

R.T.: 2.186 min  
 Delta R.T.: -0.045 min  
 Response: 59166897  
 Conc: 46.67 ng/ml



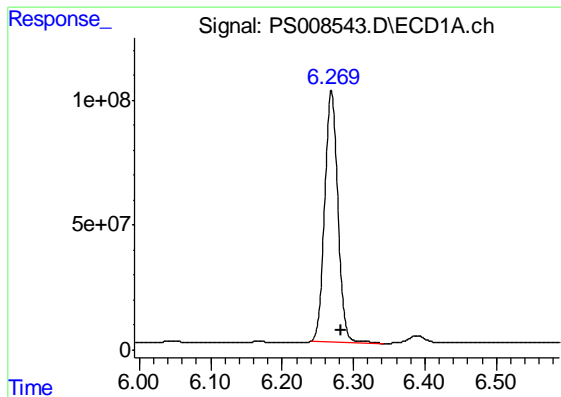
#2 3,5-DICHLOROBENZOIC ACID

R.T.: 0.000 min  
 Exp R.T. : 5.501 min  
 Response: 0  
 Conc: N.D.



#2 3,5-DICHLOROBENZOIC ACID

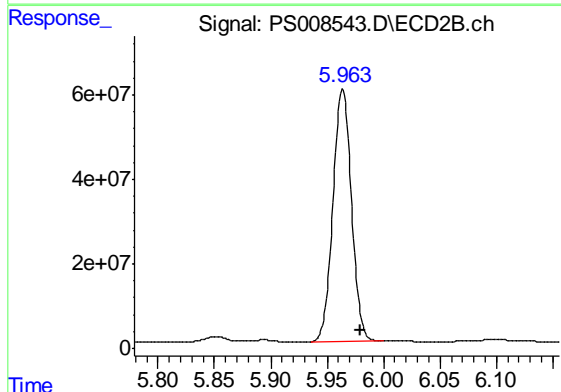
R.T.: 5.151 min  
 Delta R.T.: 0.017 min  
 Response: 32950519  
 Conc: 23.58 ng/ml



#4 2,4-DCAA

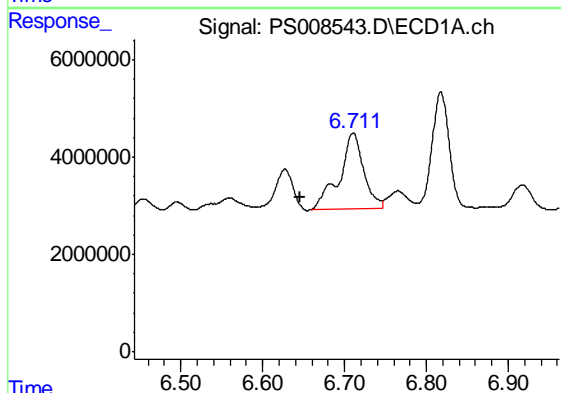
R.T.: 6.269 min  
 Delta R.T.: -0.014 min  
 Response: 1285062904  
 Conc: 727.79 ng/ml

Instrument :  
 ECD\_S  
 ClientSampleId :  
 PB126319BL



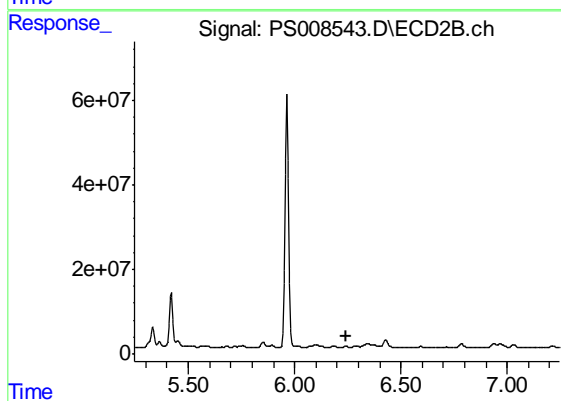
#4 2,4-DCAA

R.T.: 5.964 min  
 Delta R.T.: -0.016 min  
 Response: 679806501  
 Conc: 717.50 ng/ml



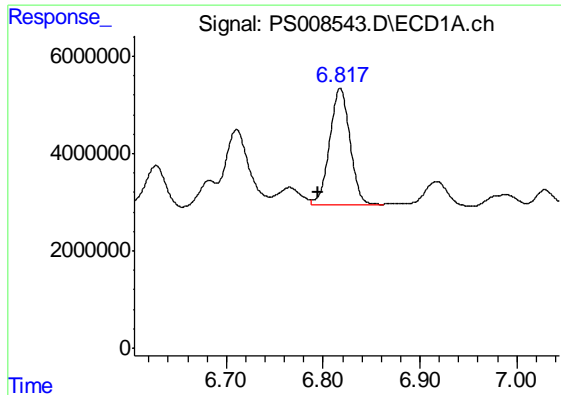
#6 MCPP

R.T.: 6.710 min  
 Delta R.T.: 0.065 min  
 Response: 32591912  
 Conc: 6.39 ug/ml



#6 MCPP

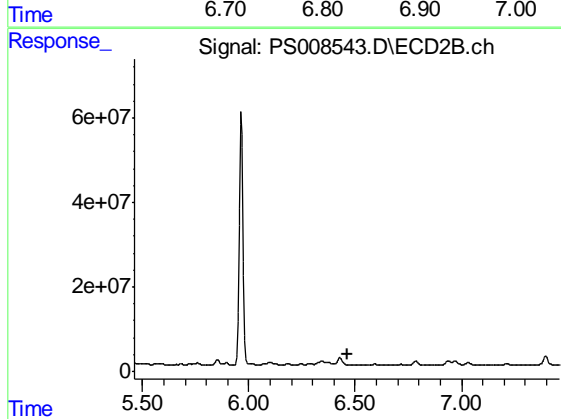
R.T.: 0.000 min  
 Exp R.T. : 6.246 min  
 Response: 0  
 Conc: N.D.



#7 MCPA

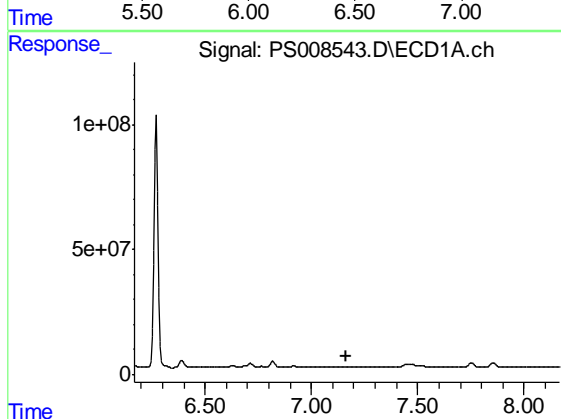
R.T.: 6.818 min  
 Delta R.T.: 0.023 min  
 Response: 34839402  
 Conc: 4.77 ug/ml

Instrument :  
 ECD\_S  
 ClientSampleId :  
 PB126319BL



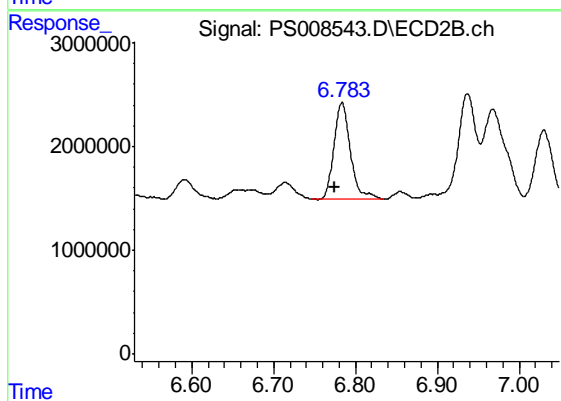
#7 MCPA

R.T.: 0.000 min  
 Exp R.T. : 6.462 min  
 Response: 0  
 Conc: N.D.



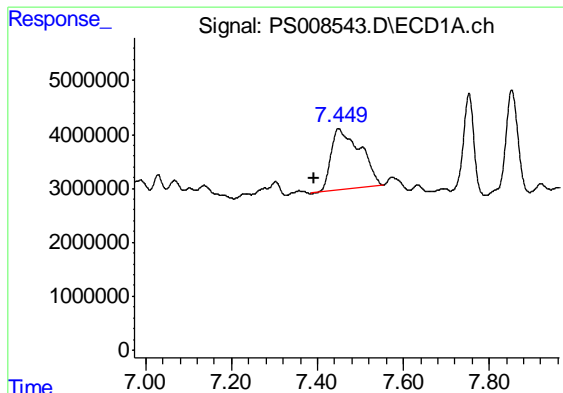
#8 DICHLORPROP

R.T.: 0.000 min  
 Exp R.T. : 7.167 min  
 Response: 0  
 Conc: N.D.



#8 DICHLORPROP

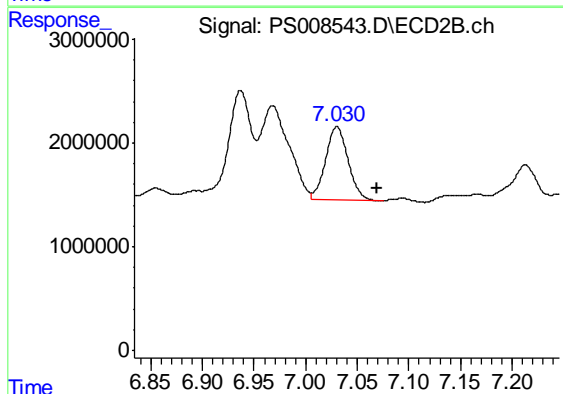
R.T.: 6.784 min  
 Delta R.T.: 0.009 min  
 Response: 12840819  
 Conc: 13.29 ng/ml



#9 2,4-D

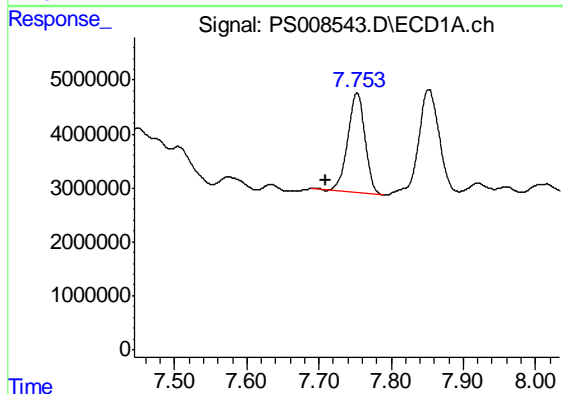
R.T.: 7.449 min  
 Delta R.T.: 0.055 min  
 Response: 53354500  
 Conc: 29.33 ng/ml

Instrument :  
 ECD\_S  
 ClientSampleId :  
 PB126319BL



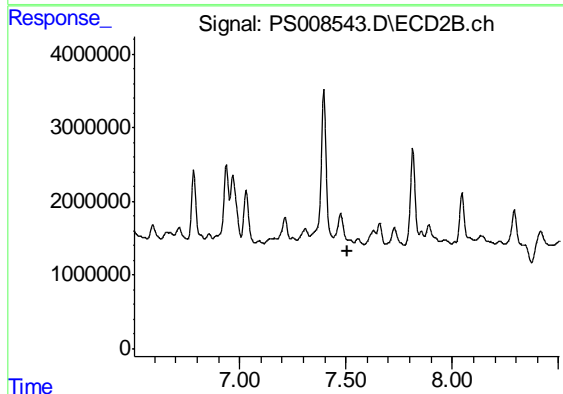
#9 2,4-D

R.T.: 7.030 min  
 Delta R.T.: -0.038 min  
 Response: 10740055  
 Conc: 9.16 ng/ml



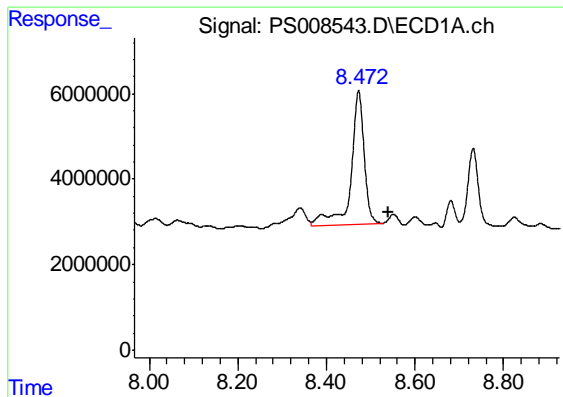
#10 Pentachlorophenol

R.T.: 7.753 min  
 Delta R.T.: 0.043 min  
 Response: 30961736  
 Conc: 1.27 ng/ml



#10 Pentachlorophenol

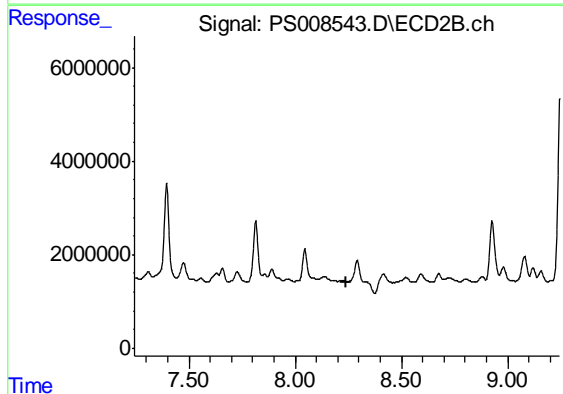
R.T.: 0.000 min  
 Exp R.T. : 7.505 min  
 Response: 0  
 Conc: N.D.



#12 2,4,5-T

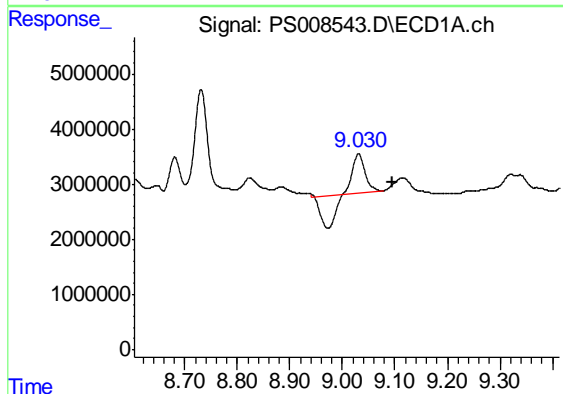
R.T.: 8.473 min  
 Delta R.T.: -0.069 min  
 Response: 64329792  
 Conc: 6.97 ng/ml

Instrument :  
 ECD\_S  
 ClientSampleId :  
 PB126319BL



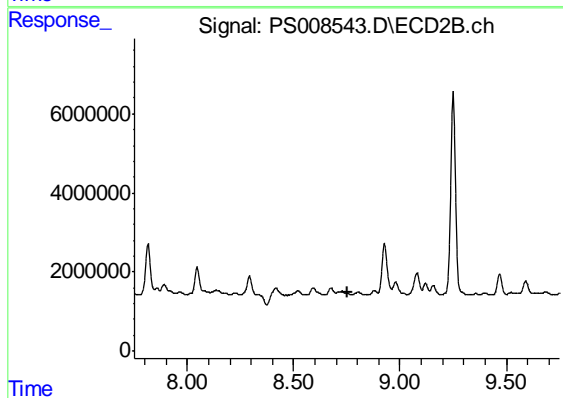
#12 2,4,5-T

R.T.: 0.000 min  
 Exp R.T. : 8.243 min  
 Response: 0  
 Conc: N.D.



#13 2,4-DB

R.T.: 9.031 min  
 Delta R.T.: -0.064 min  
 Response: 1939459  
 Conc: 1.40 ng/ml



#13 2,4-DB

R.T.: 0.000 min  
 Exp R.T. : 8.751 min  
 Response: 0  
 Conc: N.D.