

Data Path : Z:\pestpcbsrv\HPCHEM1\ECD\_S\Data\PS012819\  
 Data File : PS002948.D  
 Signal(s) : Signal #1: ECD1A.ch Signal #2: ECD2B.ch  
 Acq On : 28 Jan 2019 19:01  
 Operator : EI\SJ  
 Sample : HSTDICC1500  
 Misc :  
 ALS Vial : 7 Sample Multiplier: 1

Instrument :  
 ECD\_S  
 ClientSampleId :  
 HSTDICC1500

Integration File signal 1: autoint1.e  
 Integration File signal 2: autoint2.e  
 Quant Time: Jan 29 05:47:30 2019  
 Quant Method : Z:\pestpcbsrv\HPCHEM1\ECD\_S\Method\PS012819.M  
 Quant Title : 8080.M  
 QLast Update : Tue Jan 29 05:45:06 2019  
 Response via : Initial Calibration  
 Integrator: ChemStation

Volume Inj. : 2 µl  
 Signal #1 Phase : Rtx-CLPesticides Signal #2 Phase: Rtx-CLPesticides2  
 Signal #1 Info : 30M x 0.32mm x0.5 Signal #2 Info : 30M x 0.32mm x 0.25µm

Compound	RT#1	RT#2	Resp#1	Resp#2	ng/ml	ng/ml
-----						
System Monitoring Compounds						
4) S 2,4-DCAA	0.000	10.784	0	614.3E6	N.D.	1446.302 #
Target Compounds						
1) T Dalapon	2.847	2.318	387.6E6	702.1E6	712.493	1315.685 #
2) T 3,5-DICHL...	0.000	8.944	0	475.0E6	N.D.	855.251 #
3) T 4-Nitroph...	0.000	9.931	0	274.4E6	N.D.	1353.552 #
5) T DICAMBA	11.593	11.066	1699.3E6	1535.7E6	1058.181	967.643
6) T MCPP	0.000	11.308	0	70488193	N.D.	63.629 #
7) T MCPA	0.000	11.685	0	89445736	N.D.	55.932 #
8) T DICHLORPROP	0.000	12.190	0	523.9E6	N.D.	1395.078 #
9) T 2,4-D	0.000	12.660	0	610.1E6	N.D.	1224.888 #
10) T Pentachlo...	13.512	13.198	5459.0E6	3602.7E6	845.851	582.066 #
11) T 2,4,5-TP ...	14.387	13.823	3439.6E6	3355.5E6	1363.084	1352.811
12) T 2,4,5-T	14.784	14.385	3363.9E6	2189.8E6	1378.536	1136.047
14) T DINOSEB	17.003	15.463	2517.2E6	473.5E6	1352.229	270.412 #
15) T Picloram	16.770	16.691	4622.2E6	4387.6E6	1444.059	1444.980
16) T DCPA	17.349	16.691	2758.9E6	4387.6E6	916.186	1426.426 #
-----						

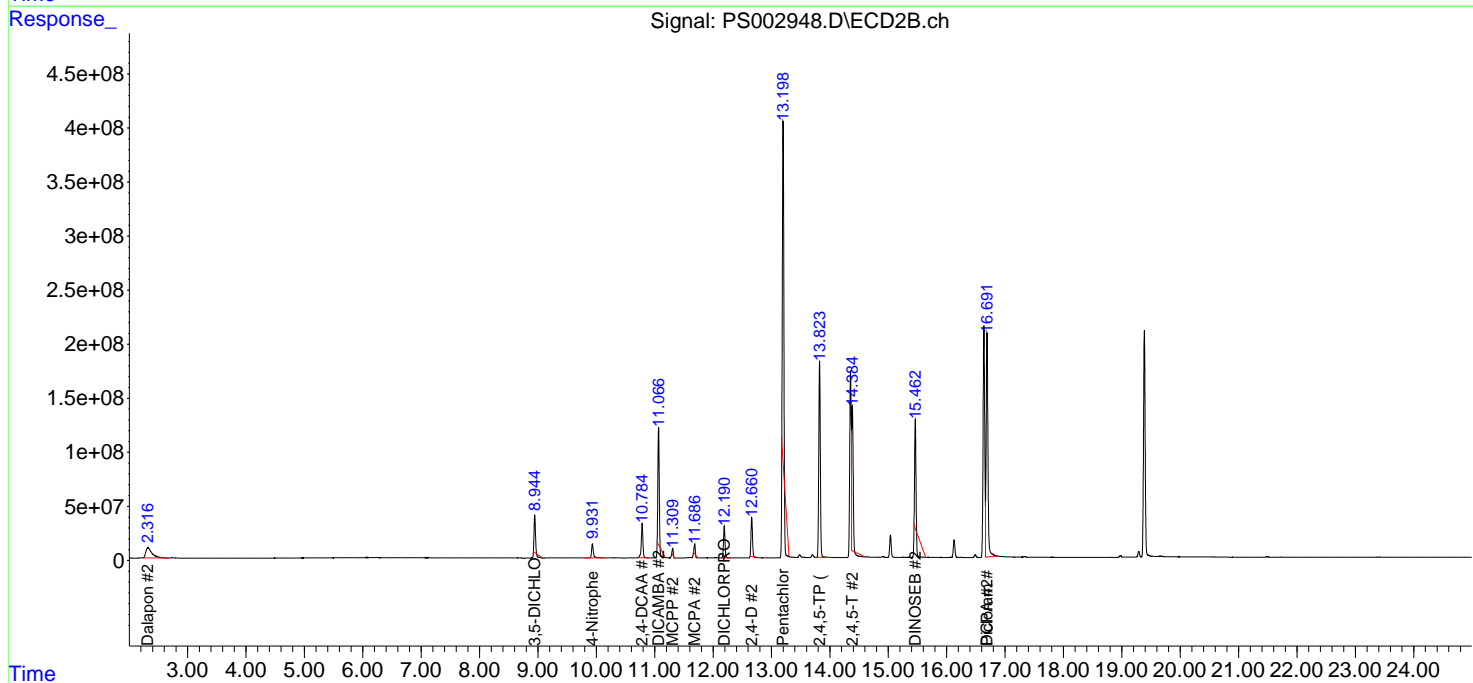
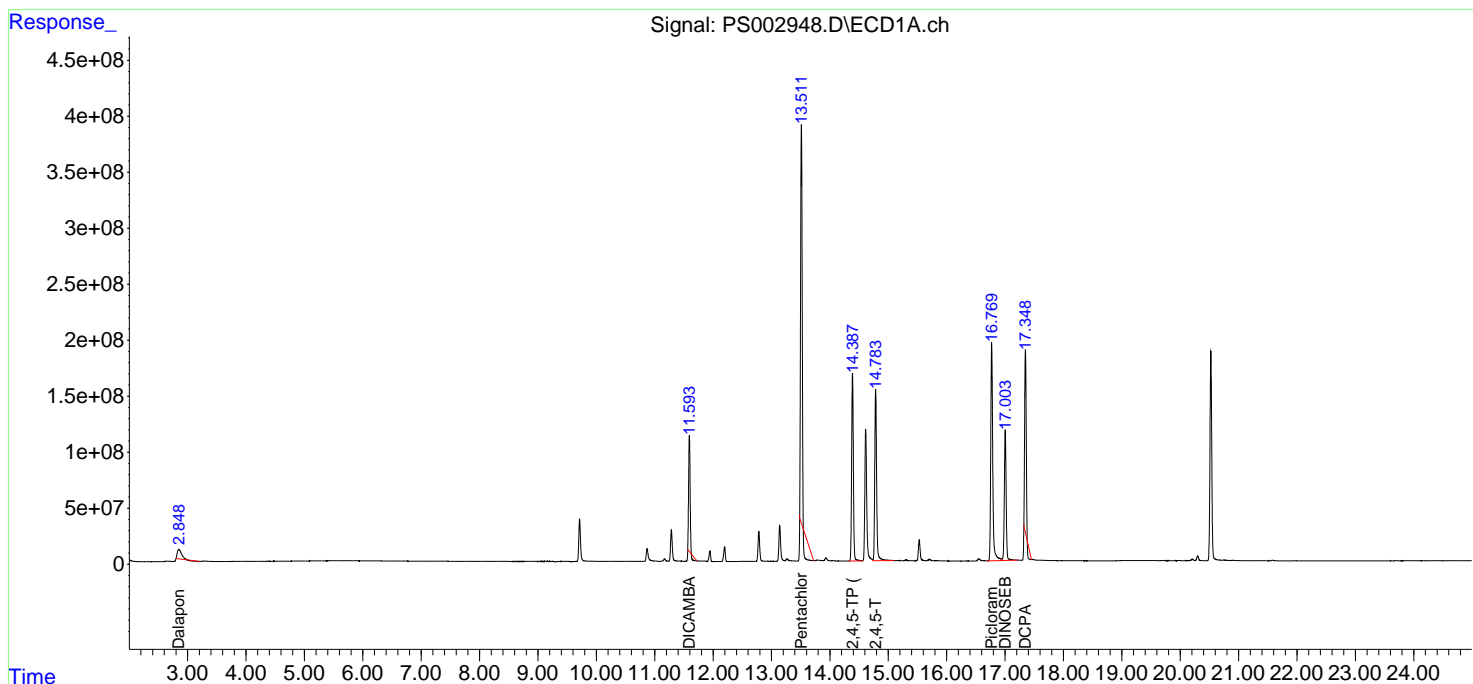
(f)=RT Delta > 1/2 Window (#)=Amounts differ by > 25% (m)=manual int.

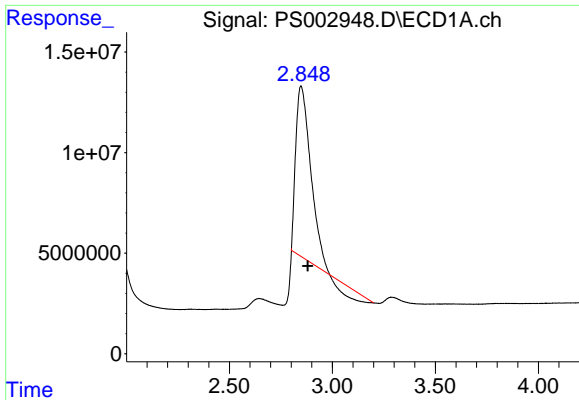
Data Path : Z:\pestpcbsrv\HPCHEM1\ECD\_S\Data\PS012819\  
 Data File : PS002948.D  
 Signal(s) : Signal #1: ECD1A.ch Signal #2: ECD2B.ch  
 Acq On : 28 Jan 2019 19:01  
 Operator : EI\SJ  
 Sample : HSTDICC1500  
 Misc :  
 ALS Vial : 7 Sample Multiplier: 1

Instrument :  
 ECD\_S  
 ClientSampleID :  
 HSTDICC1500

Integration File signal 1: autoint1.e  
 Integration File signal 2: autoint2.e  
 Quant Time: Jan 29 05:47:30 2019  
 Quant Method : Z:\pestpcbsrv\HPCHEM1\ECD\_S\Method\PS012819.M  
 Quant Title : 8080.M  
 QLast Update : Tue Jan 29 05:45:06 2019  
 Response via : Initial Calibration  
 Integrator: ChemStation

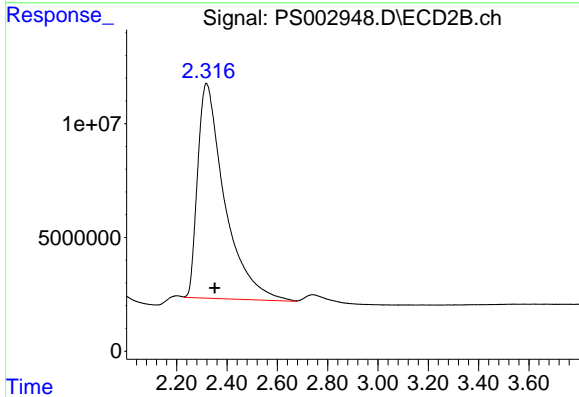
Volume Inj. : 2 µl  
 Signal #1 Phase : Rtx-CLPesticides Signal #2 Phase: Rtx-CLPesticides2  
 Signal #1 Info : 30M x 0.32mm x 0.5 Signal #2 Info : 30M x 0.32mm x 0.25µm



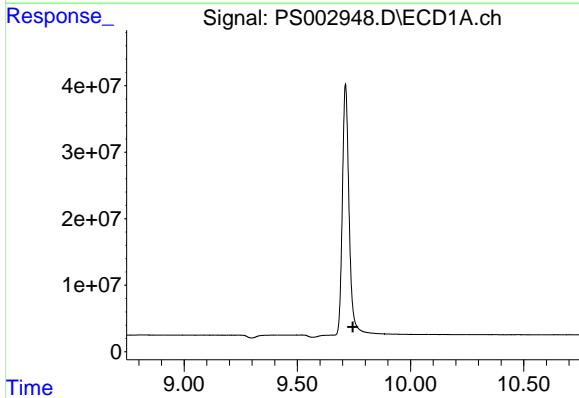


#1 Dalapon  
 R.T.: 2.847 min  
 Delta R.T.: -0.033 min  
 Response: 387565135  
 Conc: 712.49 ng/ml

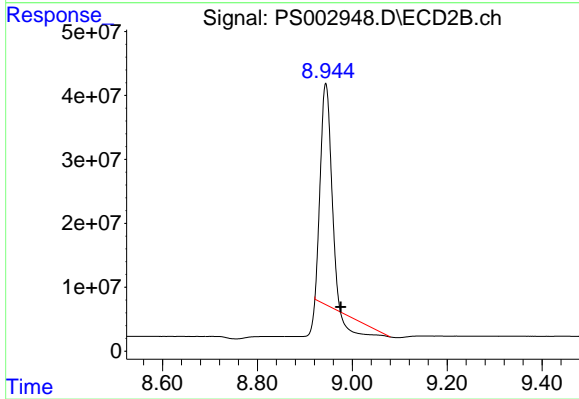
Instrument :  
 ECD\_S  
 ClientSampleId :  
 HSTDICC1500



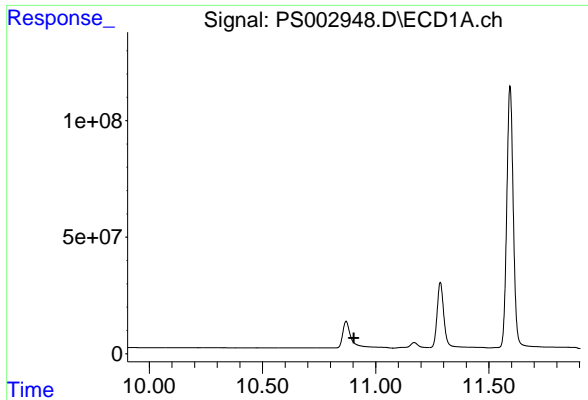
#1 Dalapon  
 R.T.: 2.318 min  
 Delta R.T.: -0.033 min  
 Response: 702051482  
 Conc: 1315.68 ng/ml



#2 3,5-DICHLOROBENZOIC ACID  
 R.T.: 0.000 min  
 Exp R.T. : 9.745 min  
 Response: 0  
 Conc: N.D.



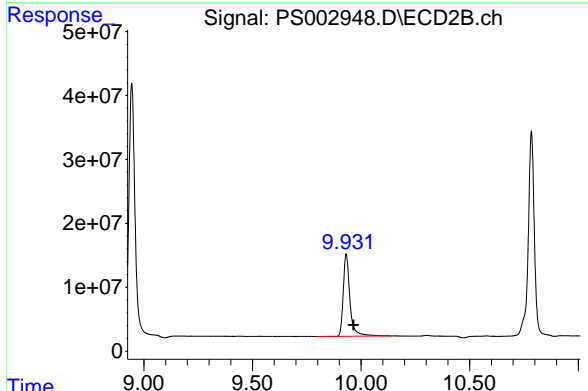
#2 3,5-DICHLOROBENZOIC ACID  
 R.T.: 8.944 min  
 Delta R.T.: -0.032 min  
 Response: 474989771  
 Conc: 855.25 ng/ml



#3 4-Nitrophenol

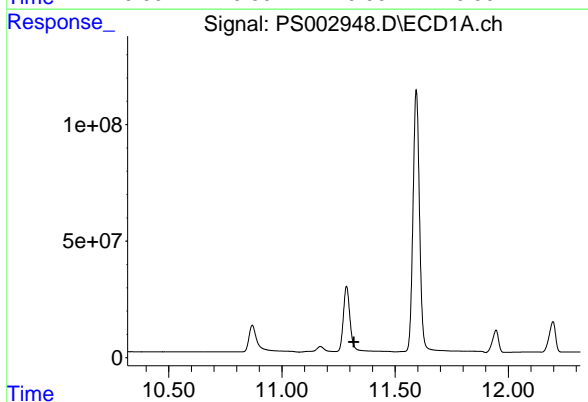
R.T.: 0.000 min  
 Exp R.T. : 10.904 min  
 Response: 0  
 Conc: N.D.

**Instrument :**  
 ECD\_S  
**ClientSampleId :**  
 HSTDICC1500



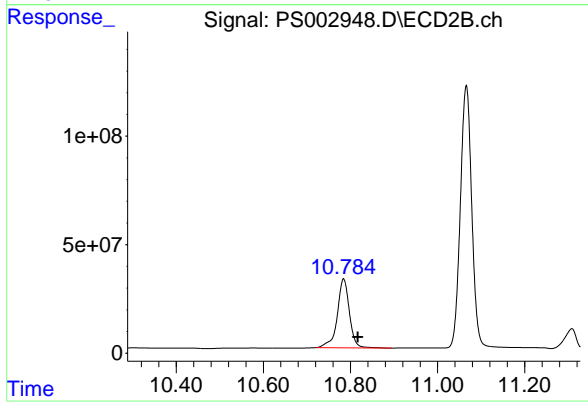
#3 4-Nitrophenol

R.T.: 9.931 min  
 Delta R.T.: -0.034 min  
 Response: 274418356  
 Conc: 1353.55 ng/ml



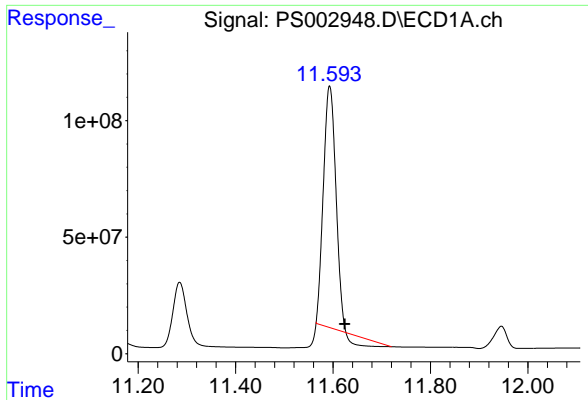
#4 2,4-DCAA

R.T.: 0.000 min  
 Exp R.T. : 11.318 min  
 Response: 0  
 Conc: N.D.



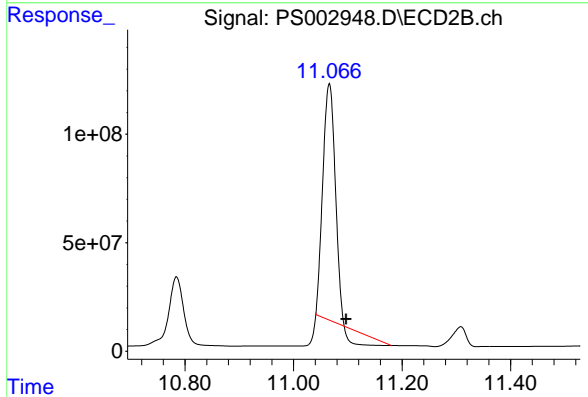
#4 2,4-DCAA

R.T.: 10.784 min  
 Delta R.T.: -0.033 min  
 Response: 614297798  
 Conc: 1446.30 ng/ml

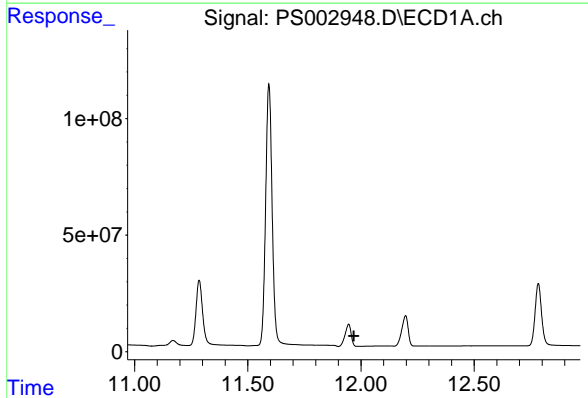


#5 DICAMBA  
 R.T.: 11.593 min  
 Delta R.T.: -0.031 min  
 Response: 1699301833  
 Conc: 1058.18 ng/ml

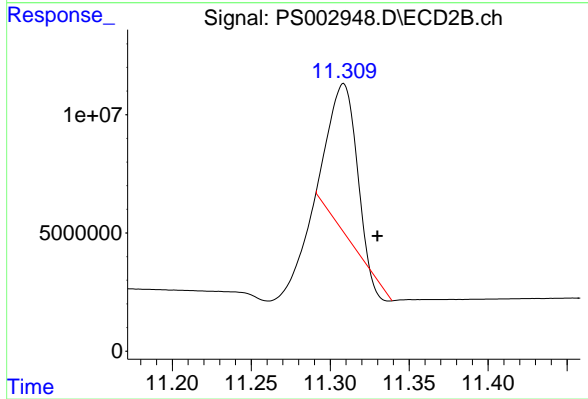
Instrument :  
 ECD\_S  
 ClientSampleId :  
 HSTDICC1500



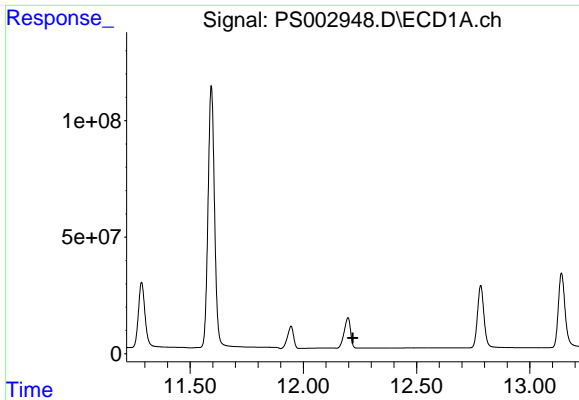
#5 DICAMBA  
 R.T.: 11.066 min  
 Delta R.T.: -0.031 min  
 Response: 1535742015  
 Conc: 967.64 ng/ml



#6 MCP  
 R.T.: 0.000 min  
 Exp R.T. : 11.969 min  
 Response: 0  
 Conc: N.D.



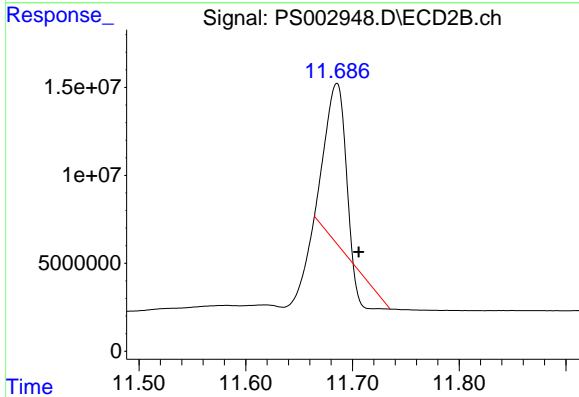
#6 MCP  
 R.T.: 11.308 min  
 Delta R.T.: -0.022 min  
 Response: 70488193  
 Conc: 63.63 ug/ml



#7 MCPA

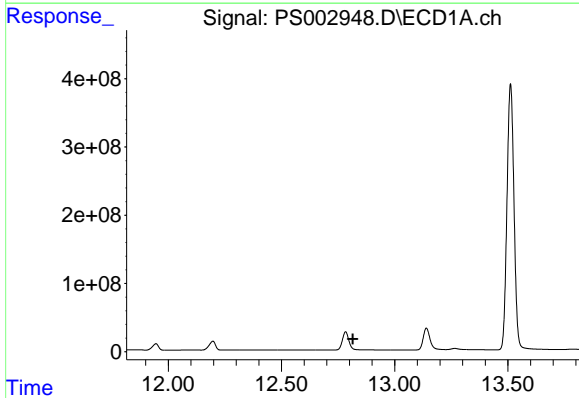
R.T.: 0.000 min  
 Exp R.T. : 12.219 min  
 Response: 0  
 Conc: N.D.

Instrument :  
 ECD\_S  
 ClientSampleId :  
 HSTDICC1500



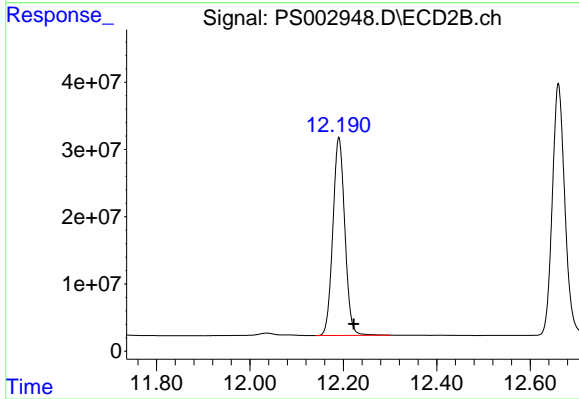
#7 MCPA

R.T.: 11.685 min  
 Delta R.T.: -0.021 min  
 Response: 89445736  
 Conc: 55.93 ug/ml



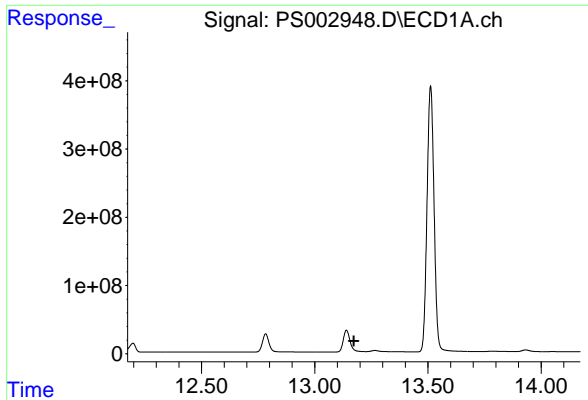
#8 DICHLORPROP

R.T.: 0.000 min  
 Exp R.T. : 12.815 min  
 Response: 0  
 Conc: N.D.



#8 DICHLORPROP

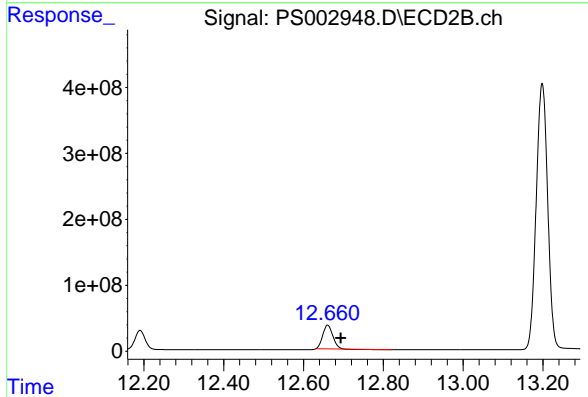
R.T.: 12.190 min  
 Delta R.T.: -0.032 min  
 Response: 523885592  
 Conc: 1395.08 ng/ml



#9 2,4-D

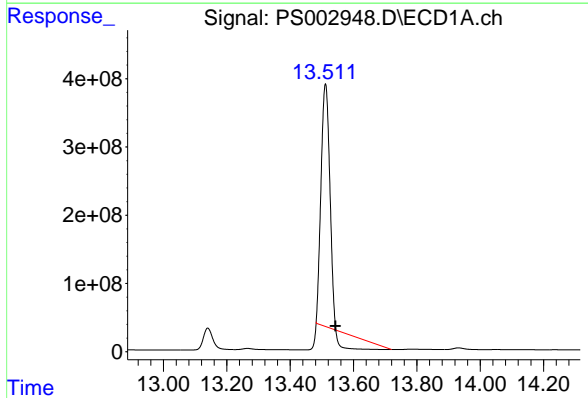
R.T.: 0.000 min  
 Exp R.T.: 13.173 min  
 Response: 0  
 Conc: N.D.

Instrument :  
 ECD\_S  
 ClientSampleId :  
 HSTDICC1500



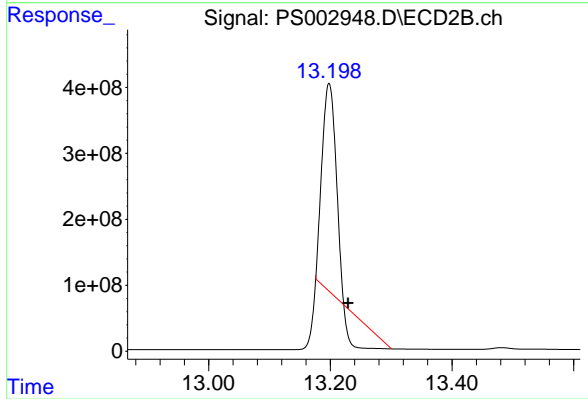
#9 2,4-D

R.T.: 12.660 min  
 Delta R.T.: -0.033 min  
 Response: 610113295  
 Conc: 1224.89 ng/ml



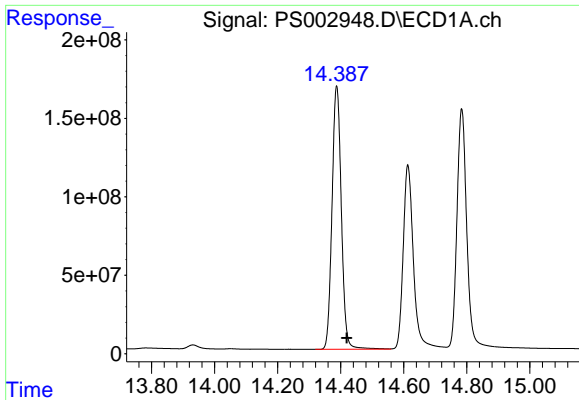
#10 Pentachlorophenol

R.T.: 13.512 min  
 Delta R.T.: -0.031 min  
 Response: 5459045885  
 Conc: 845.85 ng/ml



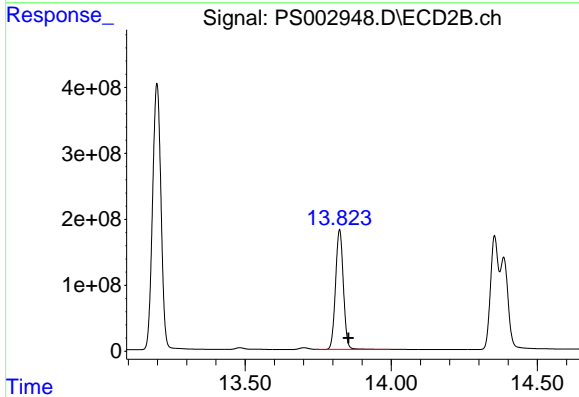
#10 Pentachlorophenol

R.T.: 13.198 min  
 Delta R.T.: -0.031 min  
 Response: 3602725248  
 Conc: 582.07 ng/ml

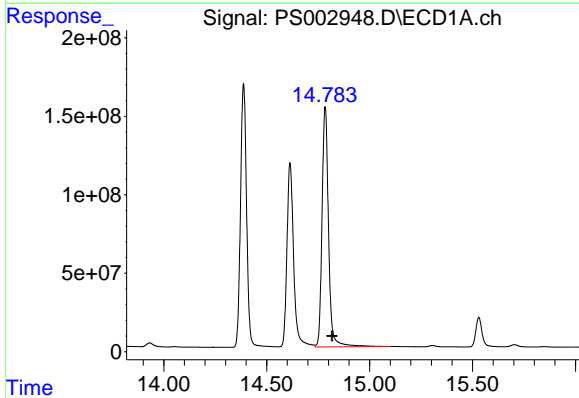


#11 2,4,5-TP (SILVEX)  
 R.T.: 14.387 min  
 Delta R.T.: -0.032 min  
 Response: 3439570900  
 Conc: 1363.08 ng/ml

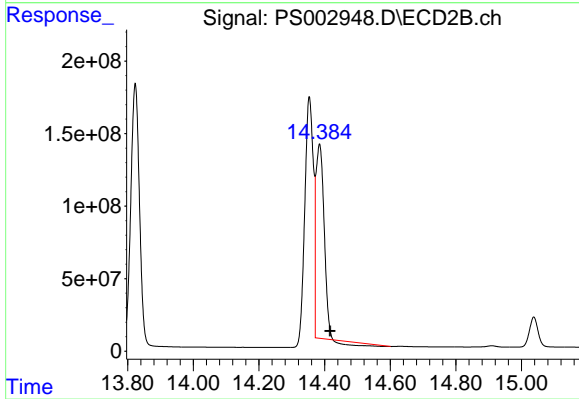
Instrument :  
 ECD\_S  
 ClientSampleId :  
 HSTDICC1500



#11 2,4,5-TP (SILVEX)  
 R.T.: 13.823 min  
 Delta R.T.: -0.031 min  
 Response: 3355475511  
 Conc: 1352.81 ng/ml

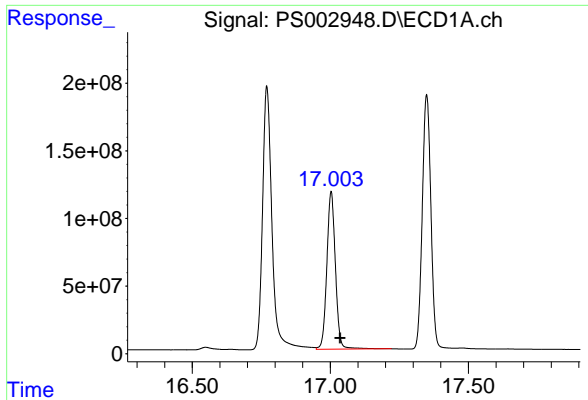


#12 2,4,5-T  
 R.T.: 14.784 min  
 Delta R.T.: -0.033 min  
 Response: 3363880238  
 Conc: 1378.54 ng/ml



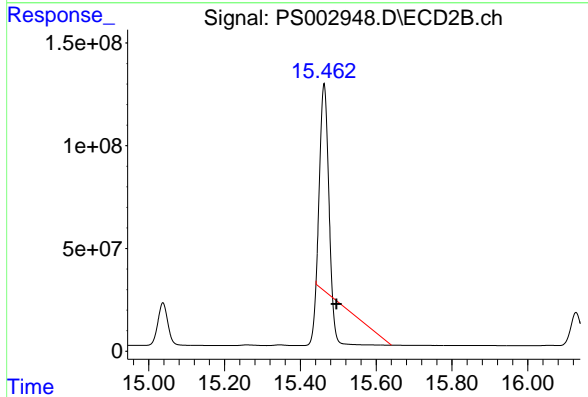
#12 2,4,5-T  
 R.T.: 14.385 min  
 Delta R.T.: -0.032 min  
 Response: 2189845412  
 Conc: 1136.05 ng/ml



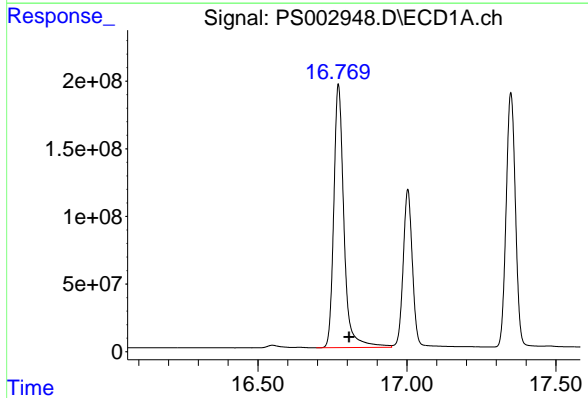


#14 DINOSEB  
 R.T.: 17.003 min  
 Delta R.T.: -0.032 min  
 Response: 2517241654  
 Conc: 1352.23 ng/ml

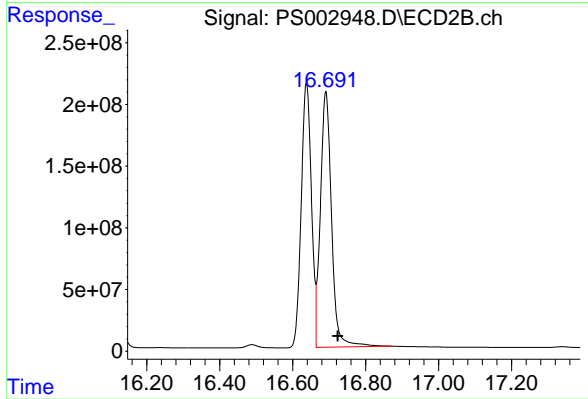
Instrument :  
 ECD\_S  
 ClientSampleId :  
 HSTDICC1500



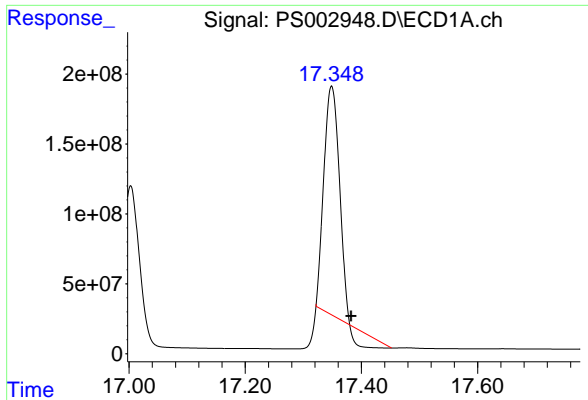
#14 DINOSEB  
 R.T.: 15.463 min  
 Delta R.T.: -0.032 min  
 Response: 473533941  
 Conc: 270.41 ng/ml



#15 Picloram  
 R.T.: 16.770 min  
 Delta R.T.: -0.036 min  
 Response: 4622181844  
 Conc: 1444.06 ng/ml



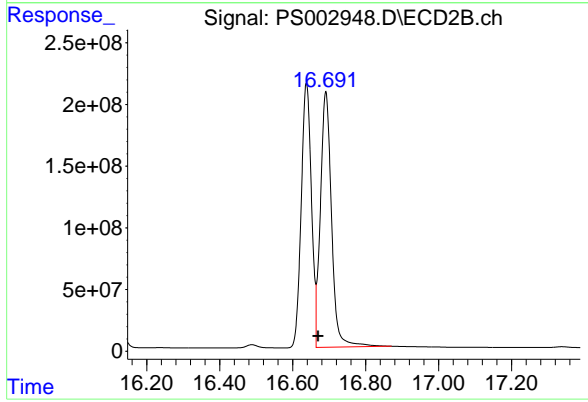
#15 Picloram  
 R.T.: 16.691 min  
 Delta R.T.: -0.033 min  
 Response: 4387562678  
 Conc: 1444.98 ng/ml



#16 DCPA

R.T.: 17.349 min  
Delta R.T.: -0.033 min  
Response: 2758905860  
Conc: 916.19 ng/ml

Instrument :  
ECD\_S  
ClientSampleId :  
HSTDICC1500



#16 DCPA

R.T.: 16.691 min  
Delta R.T.: 0.021 min  
Response: 4387562678  
Conc: 1426.43 ng/ml