

Data Path : Z:\pestpcbsrv\HPCHEM1\ECD\_S\Data\PS012819\  
 Data File : PS002956.D  
 Signal(s) : Signal #1: ECD1A.ch Signal #2: ECD2B.ch  
 Acq On : 28 Jan 2019 23:10  
 Operator : EI\SJ  
 Sample : K1011-10MS  
 Misc :  
 ALS Vial : 13 Sample Multiplier: 1

Instrument :  
 ECD\_S  
 ClientSampleId :  
 OR-01-012519-AMS

Integration File signal 1: autoint1.e  
 Integration File signal 2: autoint2.e  
 Quant Time: Jan 29 06:15:46 2019  
 Quant Method : Z:\pestpcbsrv\HPCHEM1\ECD\_S\Method\PS012819.M  
 Quant Title : 8080.M  
 QLast Update : Tue Jan 29 06:11:45 2019  
 Response via : Initial Calibration  
 Integrator: ChemStation

Volume Inj. : 2 µl  
 Signal #1 Phase : Rtx-CLPesticides Signal #2 Phase: Rtx-CLPesticides2  
 Signal #1 Info : 30M x 0.32mm x0.5 Signal #2 Info : 30M x 0.32mm x 0.25µm

Compound	RT#1	RT#2	Resp#1	Resp#2	ng/ml	ng/ml
-----						
System Monitoring Compounds						
4) S 2,4-DCAA	0.000	10.785	0	117.9E6	N.D.	275.774 #
Target Compounds						
1) T Dalapon	2.852	2.319	142.6E6	289.1E6	258.565	539.475 #
2) T 3,5-DICHL...	9.713	8.945	38198093	188.4E6	66.334	334.381 #
3) T 4-Nitroph...	0.000	10.018	0	29675430	N.D.	141.972 #
5) T DICAMBA	11.592	11.065	684.7E6	638.8E6	427.161	402.627
8) T DICHLORPROP	0.000	12.190	0	231.4E6	N.D.	605.158 #
9) T 2,4-D	0.000	12.661	0	247.0E6	N.D.	492.680 #
10) T Pentachlo...	13.511	0.000	1950.4E6	0	304.136	N.D. #
11) T 2,4,5-TP ...	14.387	13.822	1456.8E6	785.8E6	578.477	316.798 #
12) T 2,4,5-T	14.784	0.000	1388.7E6	0	569.290	N.D. #
14) T DINOSEB	17.003	0.000	539.6E6	0	286.812	N.D. #
15) T Picloram	16.772	16.692	1721.6E6	1687.6E6	544.184	561.347
16) T DCPA	17.348	16.692	813.2E6	1687.6E6	270.421	544.822 #

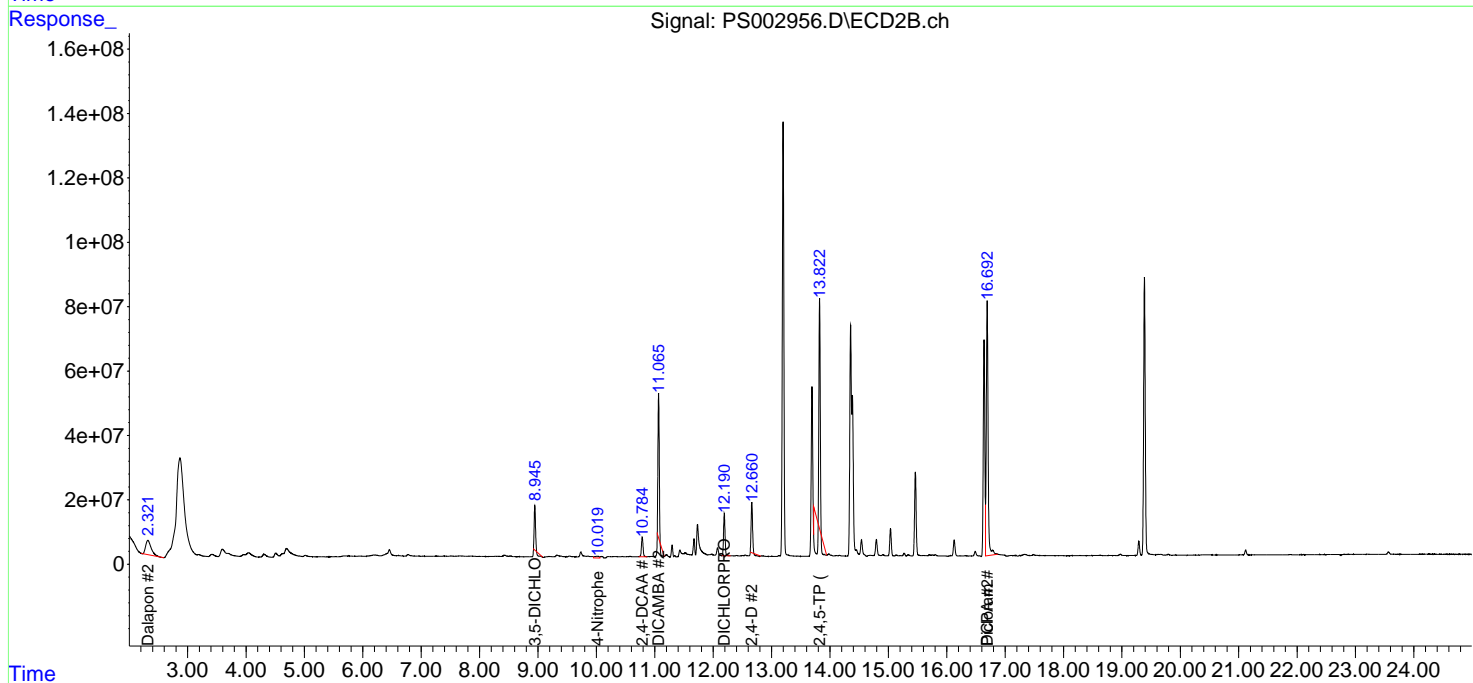
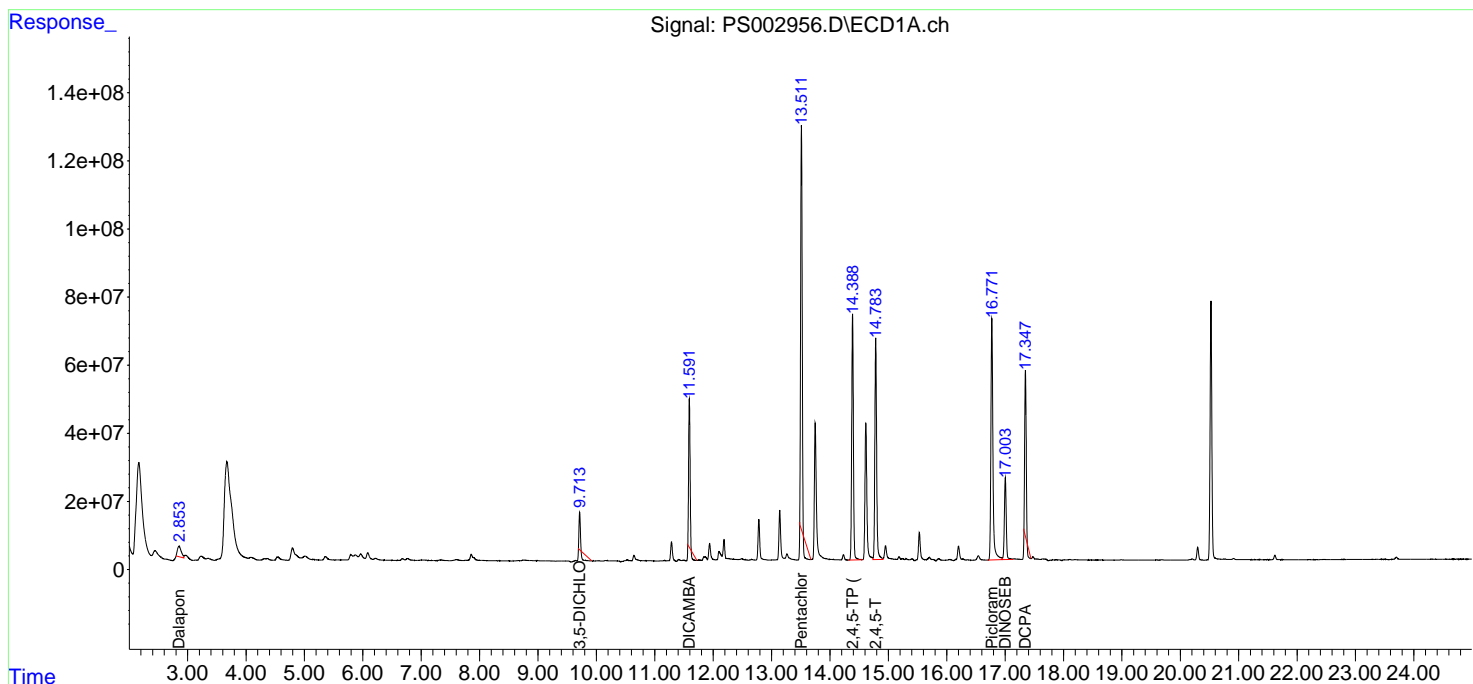
(f)=RT Delta > 1/2 Window (#)=Amounts differ by > 25% (m)=manual int.

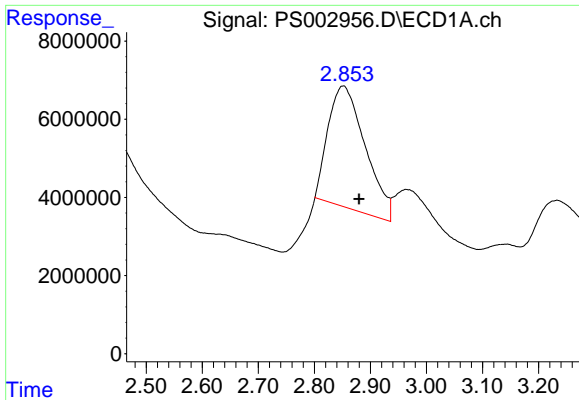
Data Path : Z:\pestpcbsrv\HPCHEM1\ECD\_S\Data\PS012819\  
 Data File : PS002956.D  
 Signal(s) : Signal #1: ECD1A.ch Signal #2: ECD2B.ch  
 Acq On : 28 Jan 2019 23:10  
 Operator : EI\SJ  
 Sample : K1011-10MS  
 Misc :  
 ALS Vial : 13 Sample Multiplier: 1

Instrument :  
 ECD\_S  
 ClientSampleId :  
 OR-01-012519-AMS

Integration File signal 1: autoint1.e  
 Integration File signal 2: autoint2.e  
 Quant Time: Jan 29 06:15:46 2019  
 Quant Method : Z:\pestpcbsrv\HPCHEM1\ECD\_S\Method\PS012819.M  
 Quant Title : 8080.M  
 QLast Update : Tue Jan 29 06:11:45 2019  
 Response via : Initial Calibration  
 Integrator: ChemStation

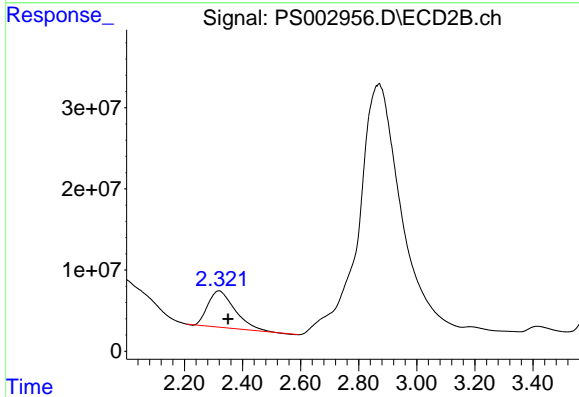
Volume Inj. : 2 µl  
 Signal #1 Phase : Rtx-CLPesticides Signal #2 Phase: Rtx-CLPesticides2  
 Signal #1 Info : 30M x 0.32mm x 0.5 Signal #2 Info : 30M x 0.32mm x 0.25µm



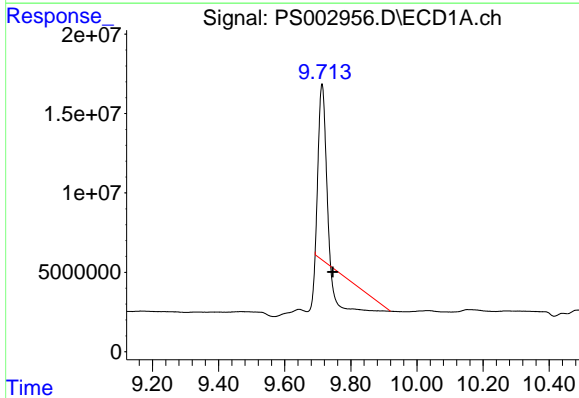


#1 Dalapon  
 R.T.: 2.852 min  
 Delta R.T.: -0.028 min  
 Response: 142636784  
 Conc: 258.57 ng/ml

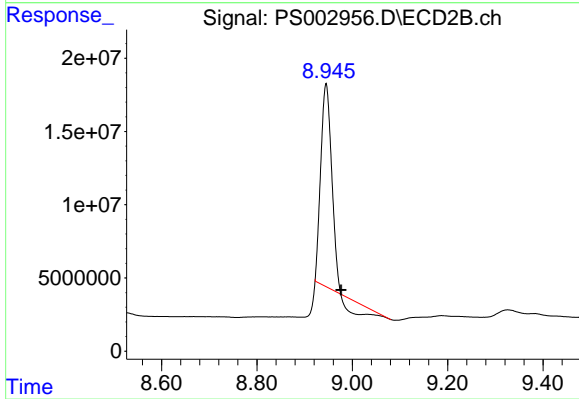
**Instrument :**  
 ECD\_S  
**ClientSampled :**  
 OR-01-012519-AMS



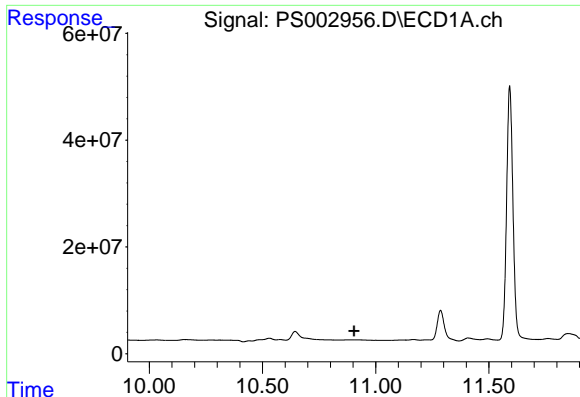
#1 Dalapon  
 R.T.: 2.319 min  
 Delta R.T.: -0.032 min  
 Response: 289116224  
 Conc: 539.48 ng/ml



#2 3,5-DICHLOROBENZOIC ACID  
 R.T.: 9.713 min  
 Delta R.T.: -0.033 min  
 Response: 38198093  
 Conc: 66.33 ng/ml



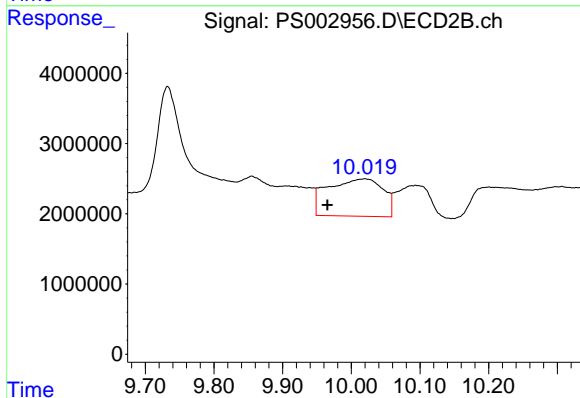
#2 3,5-DICHLOROBENZOIC ACID  
 R.T.: 8.945 min  
 Delta R.T.: -0.031 min  
 Response: 188446519  
 Conc: 334.38 ng/ml



#3 4-Nitrophenol

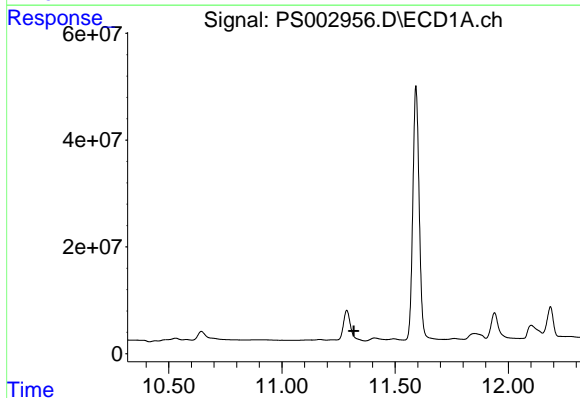
R.T.: 0.000 min  
 Exp R.T. : 10.904 min  
 Response: 0  
 Conc: N.D.

Instrument :  
 ECD\_S  
 ClientSampleId :  
 OR-01-012519-AMS



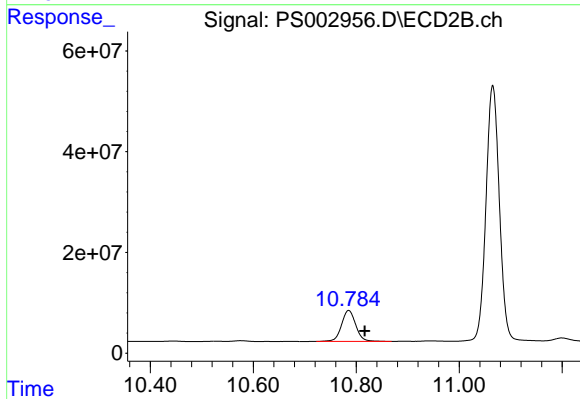
#3 4-Nitrophenol

R.T.: 10.018 min  
 Delta R.T.: 0.053 min  
 Response: 29675430  
 Conc: 141.97 ng/ml



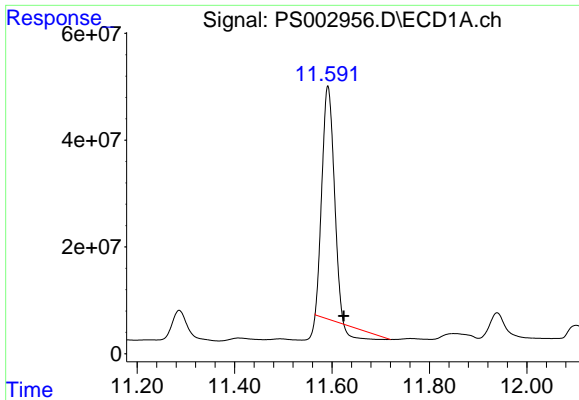
#4 2,4-DCAA

R.T.: 0.000 min  
 Exp R.T. : 11.318 min  
 Response: 0  
 Conc: N.D.



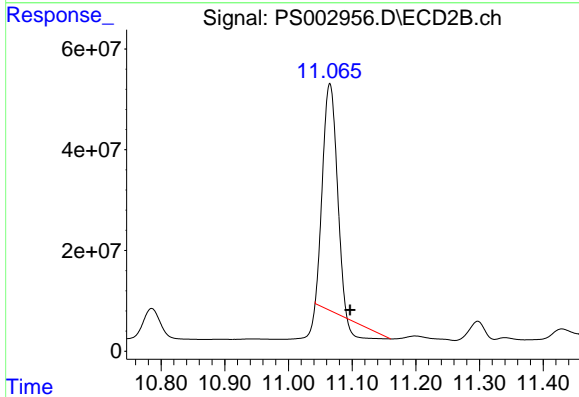
#4 2,4-DCAA

R.T.: 10.785 min  
 Delta R.T.: -0.031 min  
 Response: 117906068  
 Conc: 275.77 ng/ml

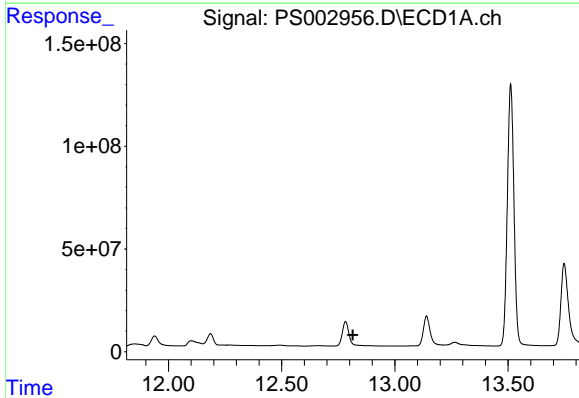


#5 DICAMBA  
 R.T.: 11.592 min  
 Delta R.T.: -0.032 min  
 Response: 684691930  
 Conc: 427.16 ng/ml

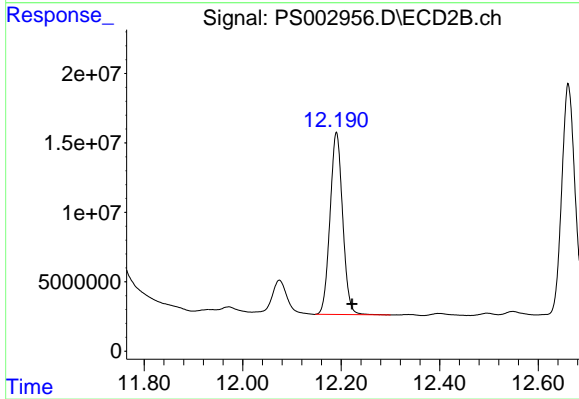
Instrument :  
 ECD\_S  
 ClientSampleId :  
 OR-01-012519-AMS



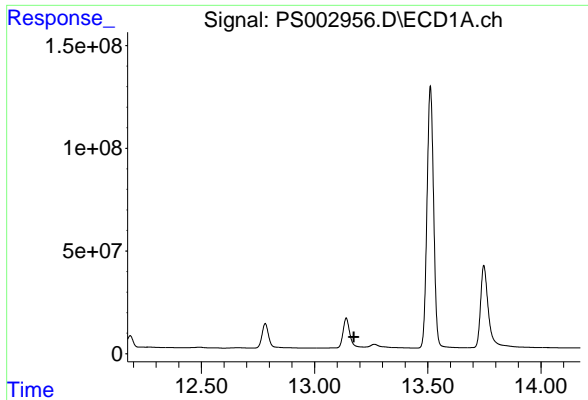
#5 DICAMBA  
 R.T.: 11.065 min  
 Delta R.T.: -0.032 min  
 Response: 638835268  
 Conc: 402.63 ng/ml



#8 DICHLORPROP  
 R.T.: 0.000 min  
 Exp R.T. : 12.815 min  
 Response: 0  
 Conc: N.D.

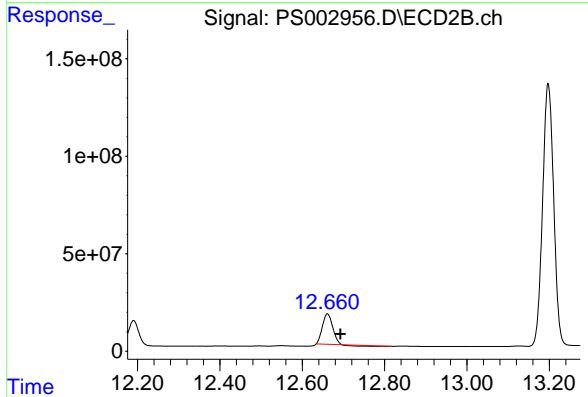


#8 DICHLORPROP  
 R.T.: 12.190 min  
 Delta R.T.: -0.032 min  
 Response: 231376805  
 Conc: 605.16 ng/ml

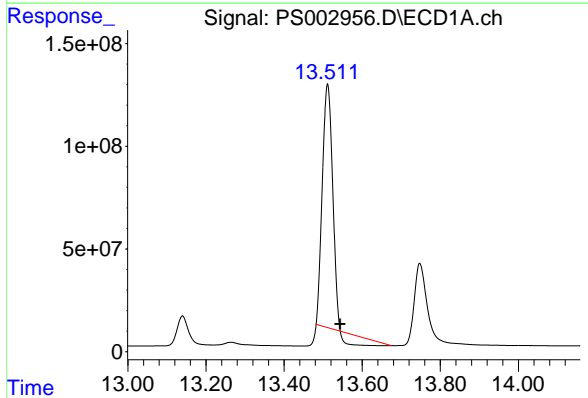


#9 2,4-D  
 R.T.: 0.000 min  
 Exp R.T. : 13.173 min  
 Response: 0  
 Conc: N.D.

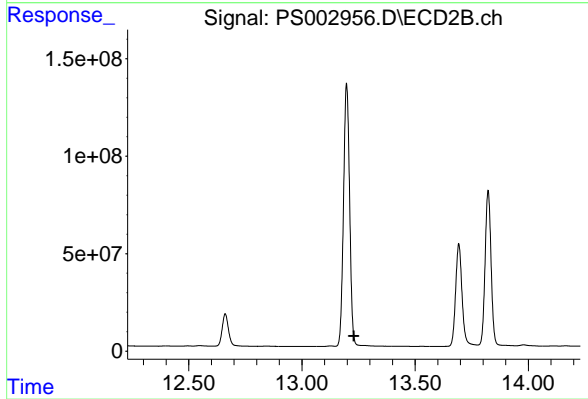
**Instrument :**  
 ECD\_S  
**ClientSampleId :**  
 OR-01-012519-AMS



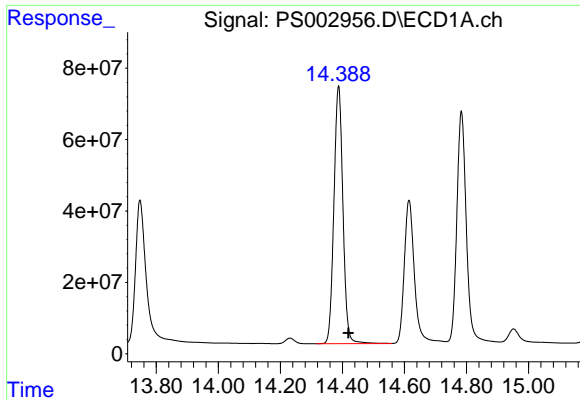
#9 2,4-D  
 R.T.: 12.661 min  
 Delta R.T.: -0.032 min  
 Response: 247022615  
 Conc: 492.68 ng/ml



#10 Pentachlorophenol  
 R.T.: 13.511 min  
 Delta R.T.: -0.032 min  
 Response: 1950421839  
 Conc: 304.14 ng/ml

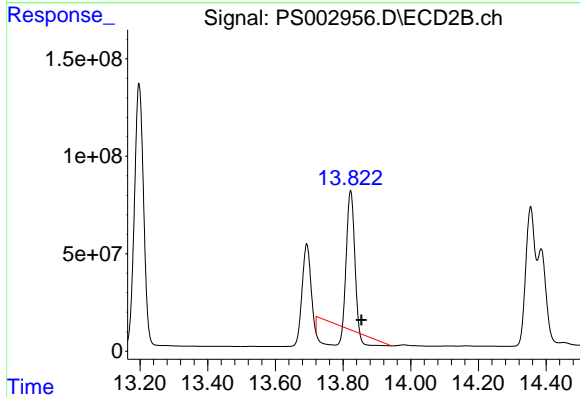


#10 Pentachlorophenol  
 R.T.: 0.000 min  
 Exp R.T. : 13.229 min  
 Response: 0  
 Conc: N.D.

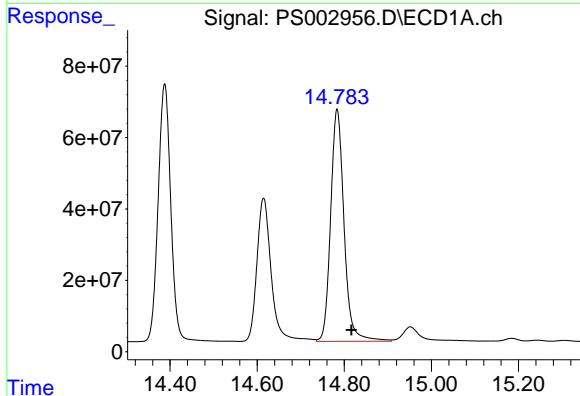


#11 2,4,5-TP (SILVEX)  
 R.T.: 14.387 min  
 Delta R.T.: -0.032 min  
 Response: 1456821775  
 Conc: 578.48 ng/ml

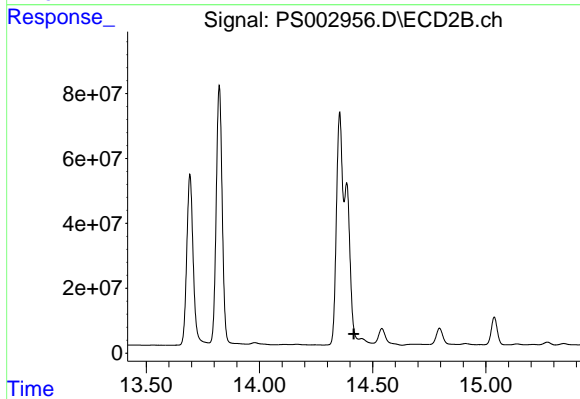
Instrument :  
 ECD\_S  
 ClientSampleId :  
 OR-01-012519-AMS



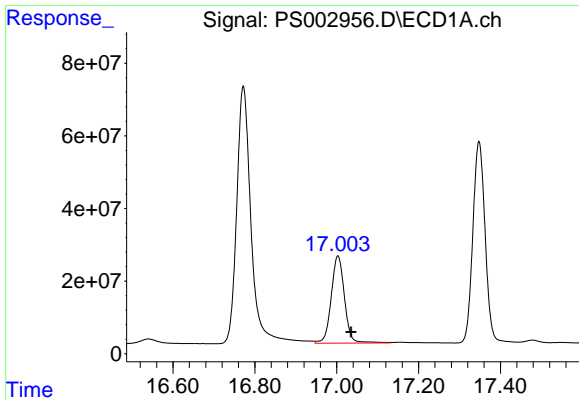
#11 2,4,5-TP (SILVEX)  
 R.T.: 13.822 min  
 Delta R.T.: -0.032 min  
 Response: 785770859  
 Conc: 316.80 ng/ml



#12 2,4,5-T  
 R.T.: 14.784 min  
 Delta R.T.: -0.033 min  
 Response: 1388729375  
 Conc: 569.29 ng/ml

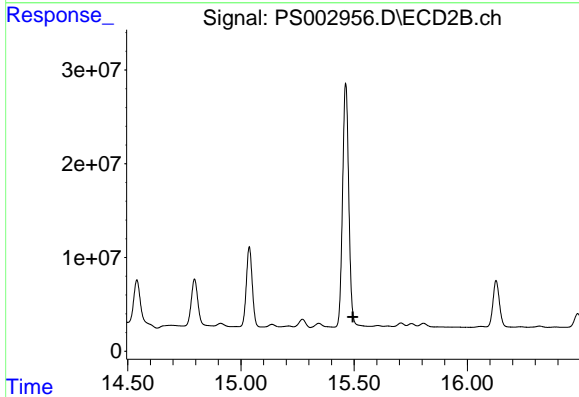


#12 2,4,5-T  
 R.T.: 0.000 min  
 Exp R.T. : 14.417 min  
 Response: 0  
 Conc: N.D.

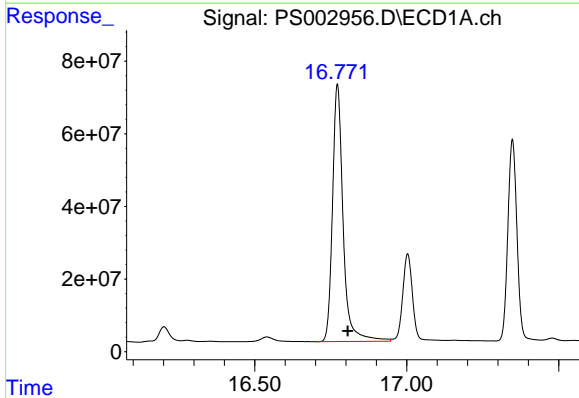


#14 DINOSEB  
 R.T.: 17.003 min  
 Delta R.T.: -0.032 min  
 Response: 539587351  
 Conc: 286.81 ng/ml

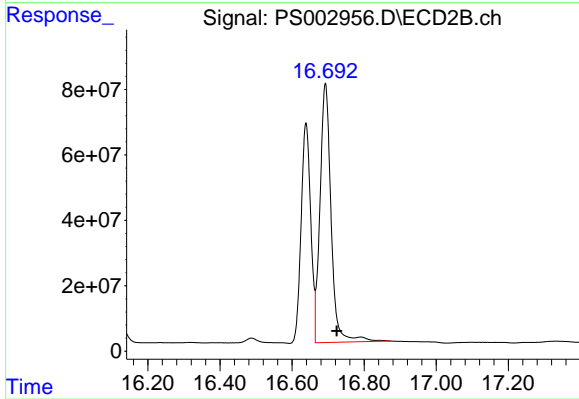
Instrument :  
 ECD\_S  
 ClientSampleId :  
 OR-01-012519-AMS



#14 DINOSEB  
 R.T.: 0.000 min  
 Exp R.T. : 15.495 min  
 Response: 0  
 Conc: N.D.

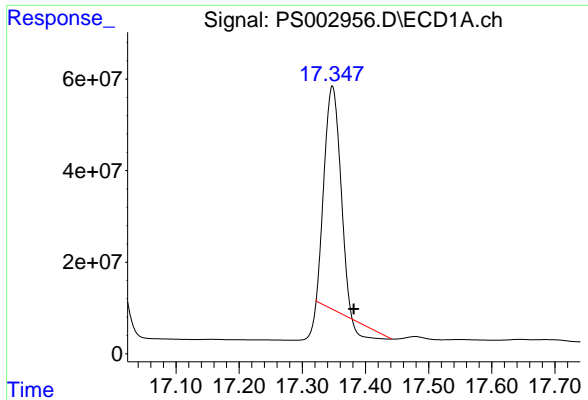


#15 Picloram  
 R.T.: 16.772 min  
 Delta R.T.: -0.034 min  
 Response: 1721597627  
 Conc: 544.18 ng/ml



#15 Picloram  
 R.T.: 16.692 min  
 Delta R.T.: -0.032 min  
 Response: 1687635579  
 Conc: 561.35 ng/ml

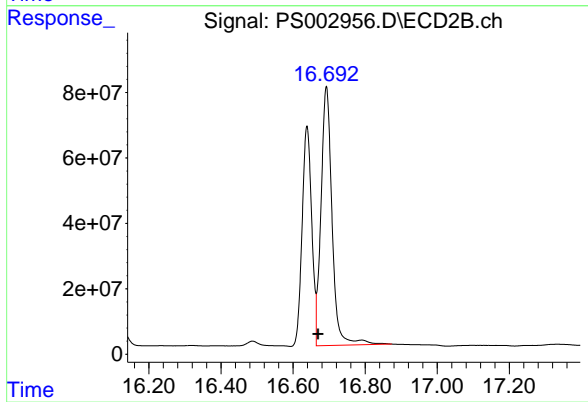




#16 DCPA

R.T.: 17.348 min  
Delta R.T.: -0.034 min  
Response: 813235579  
Conc: 270.42 ng/ml

Instrument :  
ECD\_S  
ClientSampleId :  
OR-01-012519-AMS



#16 DCPA

R.T.: 16.692 min  
Delta R.T.: 0.023 min  
Response: 1687635579  
Conc: 544.82 ng/ml