

Data Path : Z:\pestpcbsrv\HPCHEM1\ECD_S\Data\PS012819\
 Data File : PS002958.D
 Signal(s) : Signal #1: ECD1A.ch Signal #2: ECD2B.ch
 Acq On : 29 Jan 2019 00:12
 Operator : EI\SJ
 Sample : K1142-01MS
 Misc :
 ALS Vial : 15 Sample Multiplier: 1

Instrument :
 ECD_S
 ClientSampleId :
 FK-BPM-01-D9-E9-D9A-E9AMS

Integration File signal 1: autoint1.e
 Integration File signal 2: autoint2.e
 Quant Time: Jan 29 06:16:19 2019
 Quant Method : Z:\pestpcbsrv\HPCHEM1\ECD_S\Method\PS012819.M
 Quant Title : 8080.M
 QLast Update : Tue Jan 29 06:11:45 2019
 Response via : Initial Calibration
 Integrator: ChemStation

Volume Inj. : 2 µl
 Signal #1 Phase : Rtx-CLPesticides Signal #2 Phase: Rtx-CLPesticides2
 Signal #1 Info : 30M x 0.32mm x0.5 Signal #2 Info : 30M x 0.32mm x 0.25µm

	Compound	RT#1	RT#2	Resp#1	Resp#2	ng/ml	ng/ml

System Monitoring Compounds							
4) S	2,4-DCAA	11.302	10.801	125.6E6	146.2E6	330.874	341.882
Target Compounds							
1) T	Dalapon	2.863	2.327	89380522	158.2E6	162.025	295.260 #
2) T	3,5-DICHL...	9.729	8.961	181.6E6	175.2E6	315.389	310.876
3) T	4-Nitroph...	10.890	9.950	41983948	68521297	216.927	327.818 #
5) T	DICAMBA	11.608	11.081	513.9E6	496.4E6	320.617	312.869
6) T	MCP P	11.954	11.309	45770626	21373010	38.202	19.378 #
7) T	MCPA	12.199	11.684	40849381	29796663	23.079	18.942
8) T	DICHLORPROP	12.799	12.206	132.3E6	127.7E6	344.932	334.057
9) T	2,4-D	13.158	12.678	149.4E6	160.0E6	323.931	319.168
10) T	Pentachlo...	13.527	13.213	1973.8E6	1885.1E6	307.782	304.998
11) T	2,4,5-TP ...	14.403	13.839	769.2E6	772.8E6	305.418	311.583
12) T	2,4,5-T	14.801	14.369	719.1E6	762.1E6	294.778	398.253 #
13) T	2,4-DB	15.549	15.053	88997067	78848984	340.426	310.430
14) T	DINOSEB	17.020	15.478	127.8E6	85778514	67.944	48.933 #
15) T	Picloram	16.790	16.708	971.3E6	904.8E6	307.024	300.959
16) T	DCPA	17.364	16.655	487.4E6	640.8E6	162.089	206.877 #

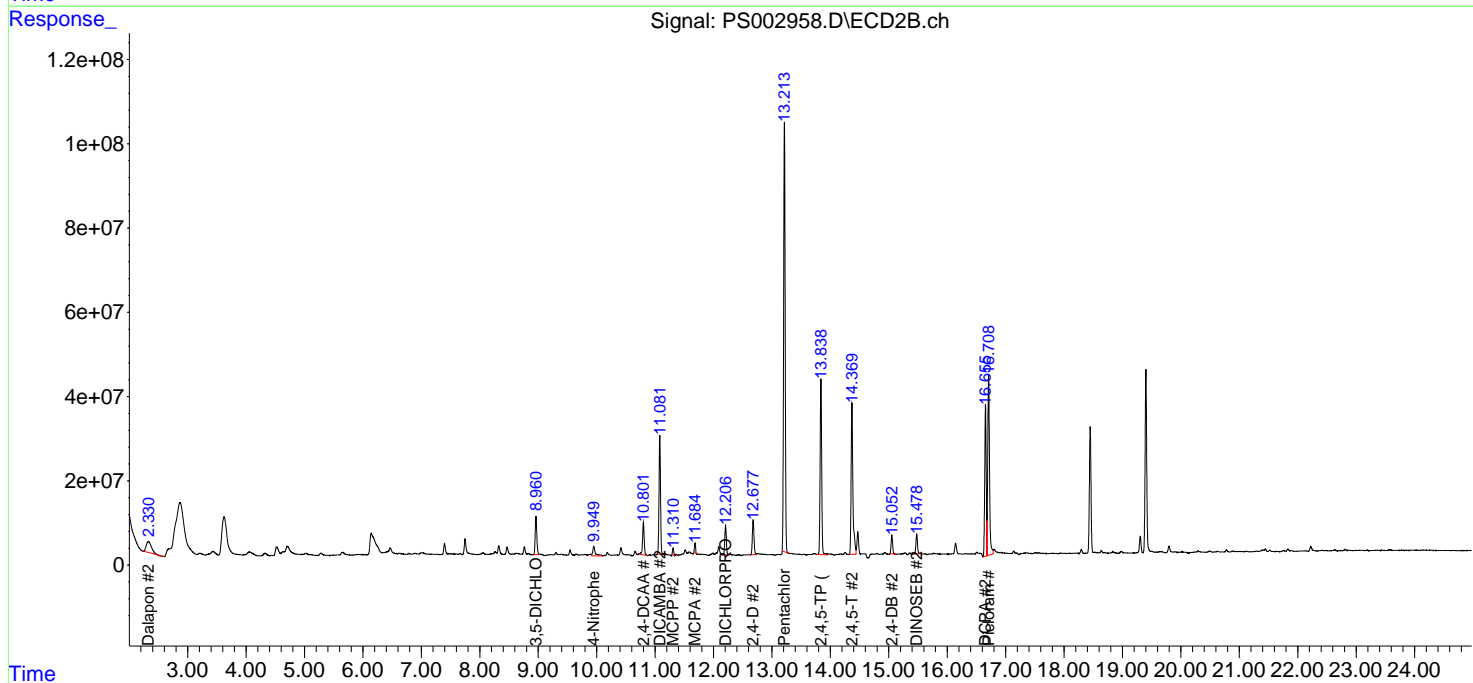
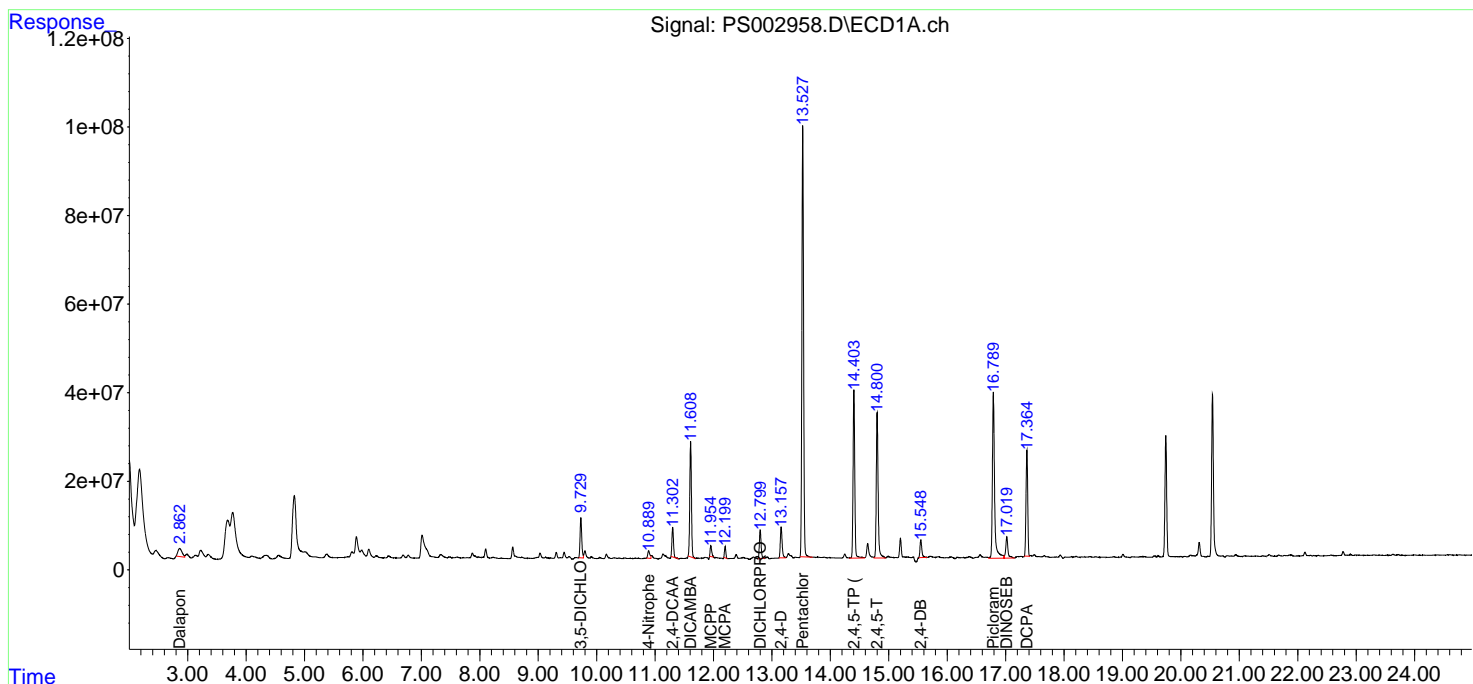
(f)=RT Delta > 1/2 Window (#)=Amounts differ by > 25% (m)=manual int.

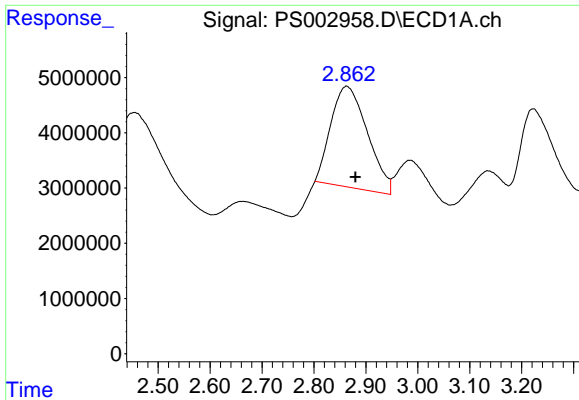
Data Path : Z:\pestpcbsrv\HPCHEM1\ECD_S\Data\PS012819\
 Data File : PS002958.D
 Signal(s) : Signal #1: ECD1A.ch Signal #2: ECD2B.ch
 Acq On : 29 Jan 2019 00:12
 Operator : EI\SJ
 Sample : K1142-01MS
 Misc :
 ALS Vial : 15 Sample Multiplier: 1

Instrument :
 ECD_S
 Client Sampled :
 FK-BPM-01-D9-E9-D9A-E9AMS

Integration File signal 1: autoint1.e
 Integration File signal 2: autoint2.e
 Quant Time: Jan 29 06:16:19 2019
 Quant Method : Z:\pestpcbsrv\HPCHEM1\ECD_S\Method\PS012819.M
 Quant Title : 8080.M
 QLast Update : Tue Jan 29 06:11:45 2019
 Response via : Initial Calibration
 Integrator: ChemStation

Volume Inj. : 2 µl
 Signal #1 Phase : Rtx-CLPesticides Signal #2 Phase: Rtx-CLPesticides2
 Signal #1 Info : 30M x 0.32mm x0.5 Signal #2 Info : 30M x 0.32mm x 0.25µm

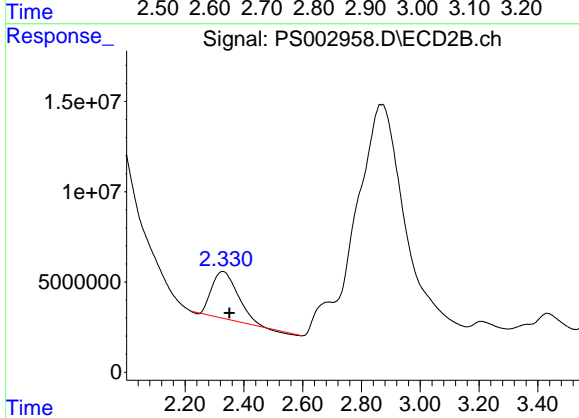




#1 Dalapon

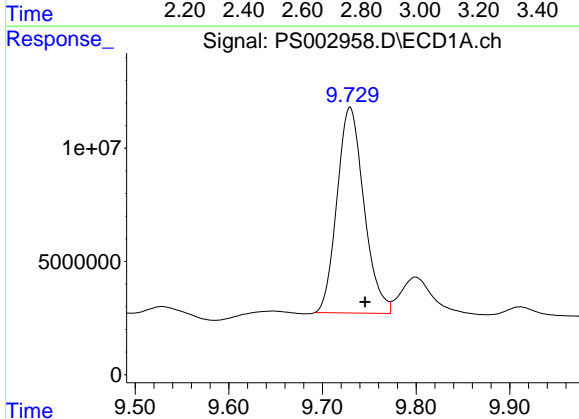
R.T.: 2.863 min
 Delta R.T.: -0.017 min
 Response: 89380522
 Conc: 162.02 ng/ml

Instrument :
 ECD_S
 ClientSampleId :
 FK-BPM-01-D9-E9-D9A-E9AMS



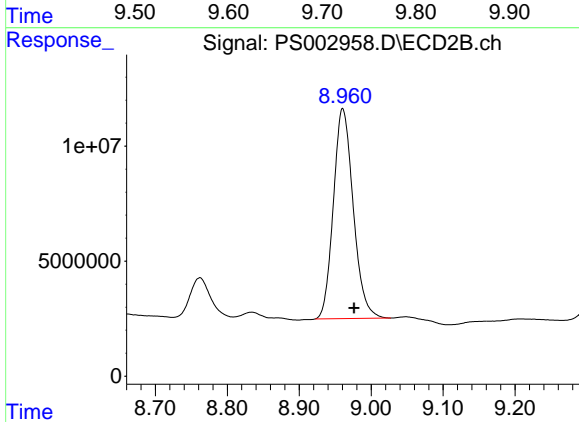
#1 Dalapon

R.T.: 2.327 min
 Delta R.T.: -0.024 min
 Response: 158236191
 Conc: 295.26 ng/ml



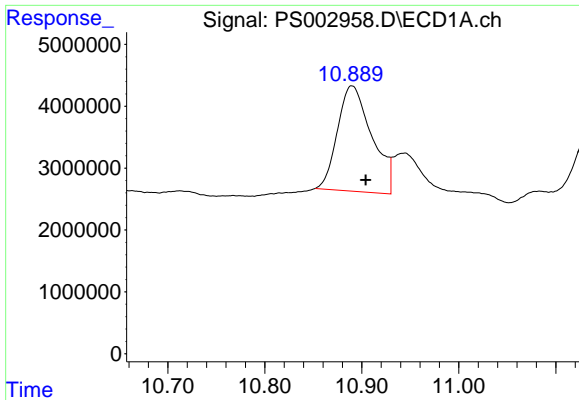
#2 3,5-DICHLOROBENZOIC ACID

R.T.: 9.729 min
 Delta R.T.: -0.016 min
 Response: 181614232
 Conc: 315.39 ng/ml



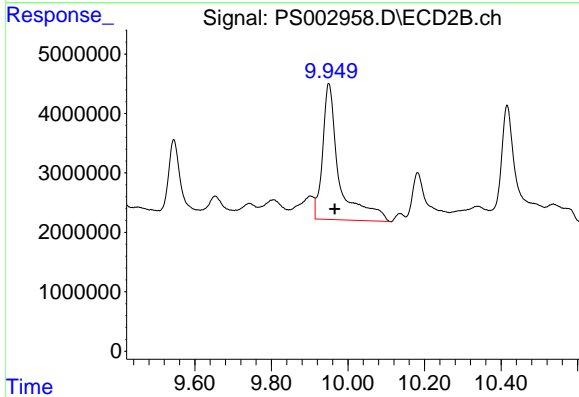
#2 3,5-DICHLOROBENZOIC ACID

R.T.: 8.961 min
 Delta R.T.: -0.016 min
 Response: 175199920
 Conc: 310.88 ng/ml

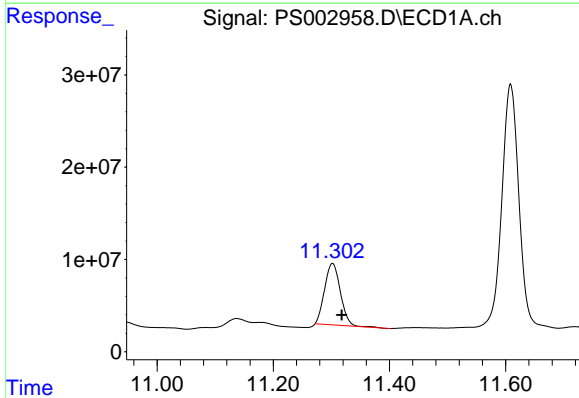


#3 4-Nitrophenol
 R.T.: 10.890 min
 Delta R.T.: -0.014 min
 Response: 41983948
 Conc: 216.93 ng/ml

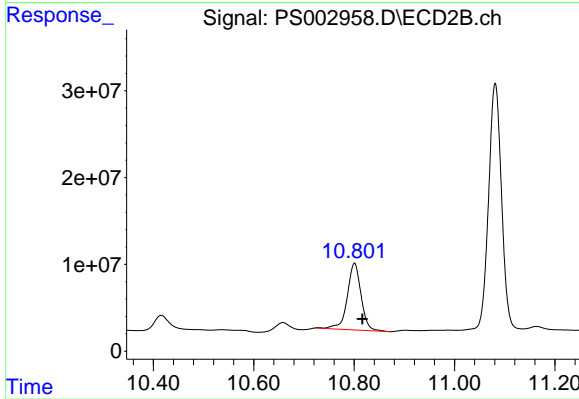
Instrument :
 ECD_S
 ClientSampleId :
 FK-BPM-01-D9-E9-D9A-E9AMS



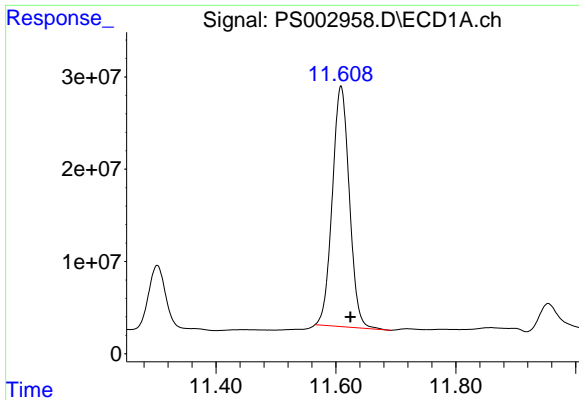
#3 4-Nitrophenol
 R.T.: 9.950 min
 Delta R.T.: -0.015 min
 Response: 68521297
 Conc: 327.82 ng/ml



#4 2,4-DCAA
 R.T.: 11.302 min
 Delta R.T.: -0.016 min
 Response: 125613115
 Conc: 330.87 ng/ml

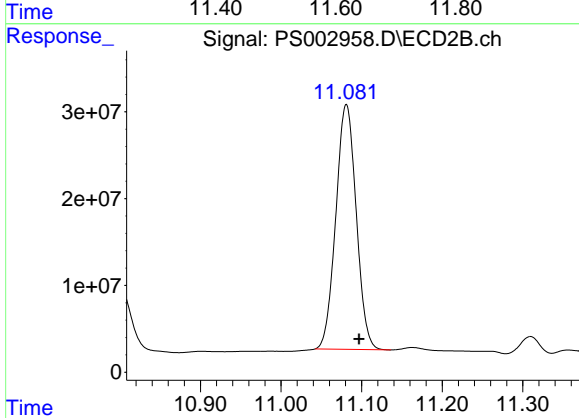


#4 2,4-DCAA
 R.T.: 10.801 min
 Delta R.T.: -0.016 min
 Response: 146170191
 Conc: 341.88 ng/ml

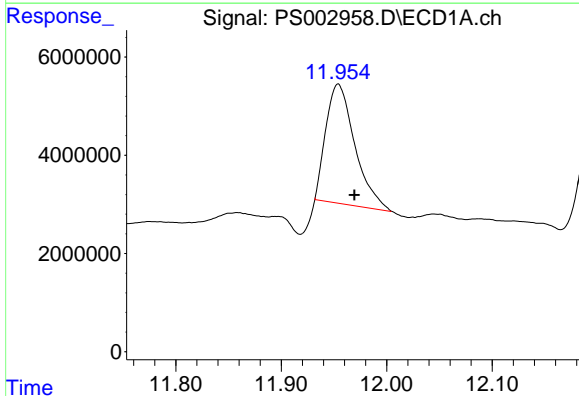


#5 DICAMBA
 R.T.: 11.608 min
 Delta R.T.: -0.016 min
 Response: 513912683
 Conc: 320.62 ng/ml

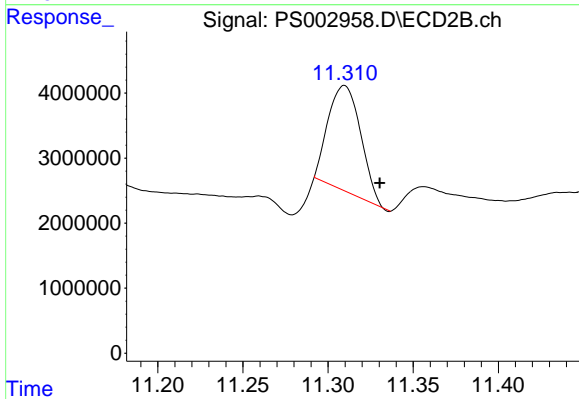
Instrument :
 ECD_S
 ClientSampleId :
 FK-BPM-01-D9-E9-D9A-E9AMS



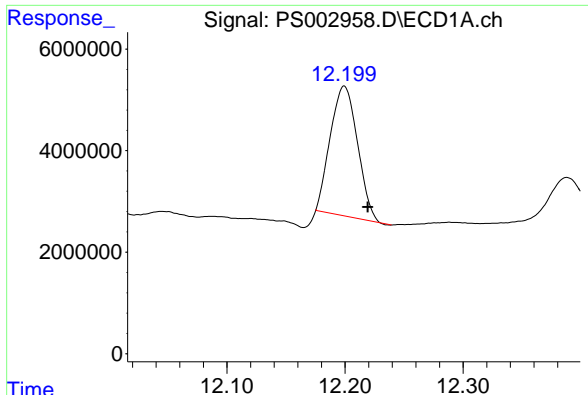
#5 DICAMBA
 R.T.: 11.081 min
 Delta R.T.: -0.016 min
 Response: 496418224
 Conc: 312.87 ng/ml



#6 MCP
 R.T.: 11.954 min
 Delta R.T.: -0.015 min
 Response: 45770626
 Conc: 38.20 ug/ml



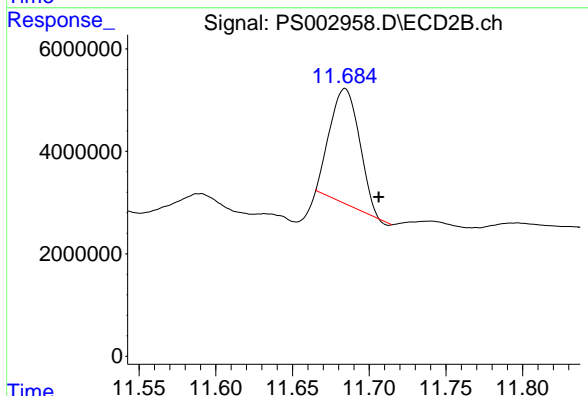
#6 MCP
 R.T.: 11.309 min
 Delta R.T.: -0.021 min
 Response: 21373010
 Conc: 19.38 ug/ml



#7 MCPA

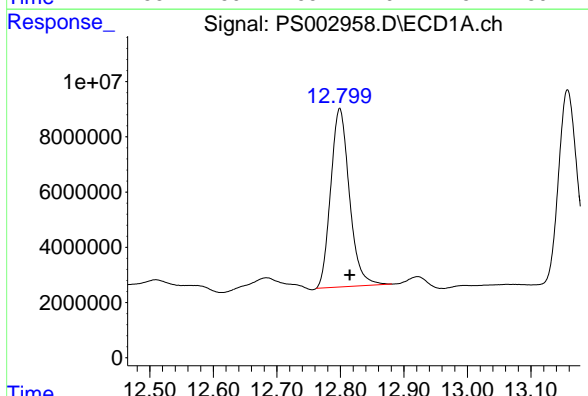
R.T.: 12.199 min
 Delta R.T.: -0.020 min
 Response: 40849381
 Conc: 23.08 ug/ml

Instrument :
 ECD_S
 ClientSampleId :
 FK-BPM-01-D9-E9-D9A-E9AMS



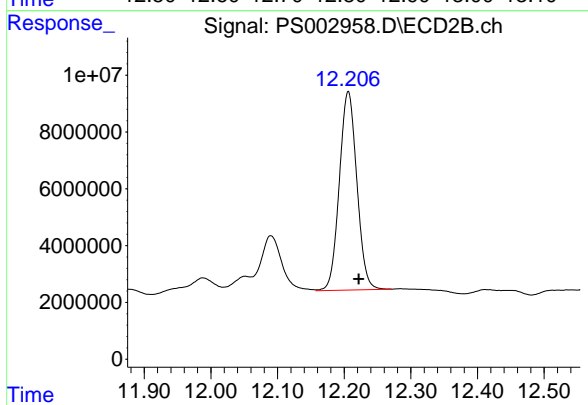
#7 MCPA

R.T.: 11.684 min
 Delta R.T.: -0.022 min
 Response: 29796663
 Conc: 18.94 ug/ml



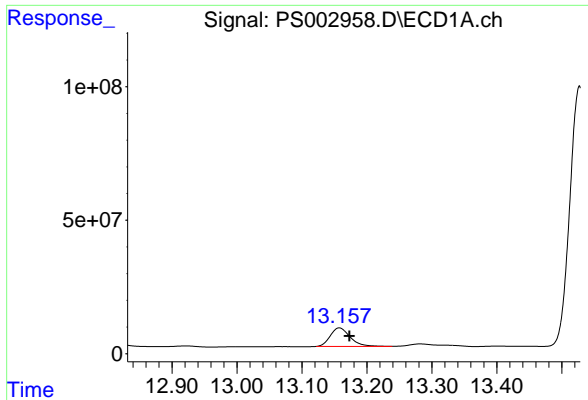
#8 DICHLORPROP

R.T.: 12.799 min
 Delta R.T.: -0.016 min
 Response: 132291965
 Conc: 344.93 ng/ml



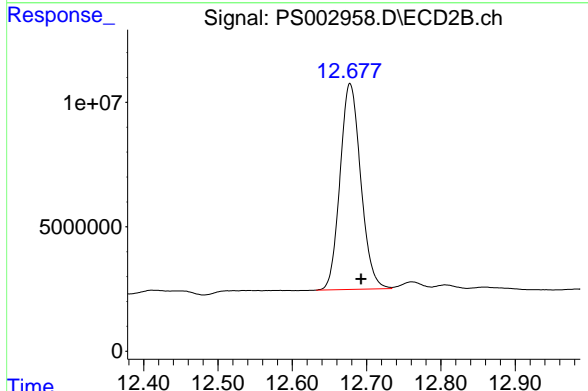
#8 DICHLORPROP

R.T.: 12.206 min
 Delta R.T.: -0.016 min
 Response: 127723718
 Conc: 334.06 ng/ml

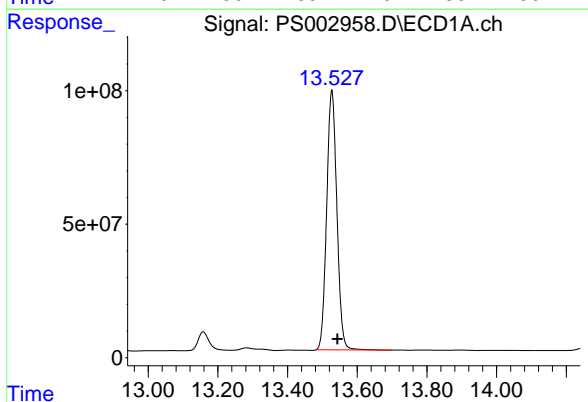


#9 2,4-D
 R.T.: 13.158 min
 Delta R.T.: -0.016 min
 Response: 149350921
 Conc: 323.93 ng/ml

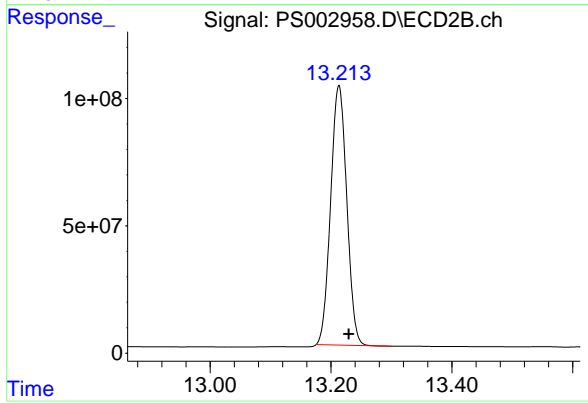
Instrument :
 ECD_S
 ClientSampleId :
 FK-BPM-01-D9-E9-D9A-E9AMS



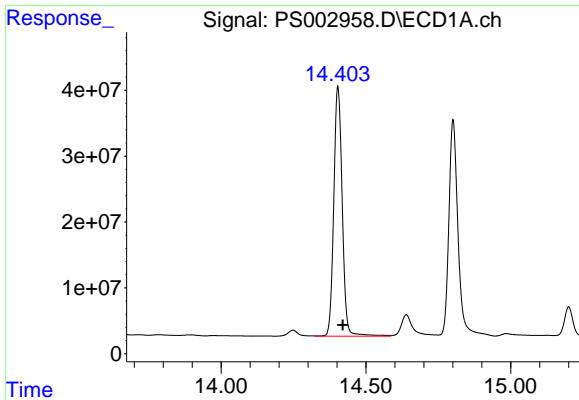
#9 2,4-D
 R.T.: 12.678 min
 Delta R.T.: -0.015 min
 Response: 160026127
 Conc: 319.17 ng/ml



#10 Pentachlorophenol
 R.T.: 13.527 min
 Delta R.T.: -0.016 min
 Response: 1973804774
 Conc: 307.78 ng/ml

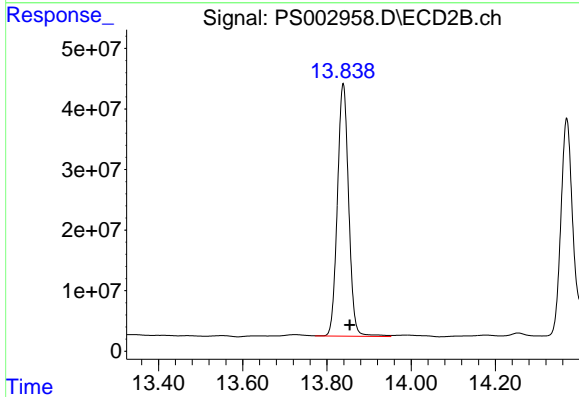


#10 Pentachlorophenol
 R.T.: 13.213 min
 Delta R.T.: -0.016 min
 Response: 1885072238
 Conc: 305.00 ng/ml

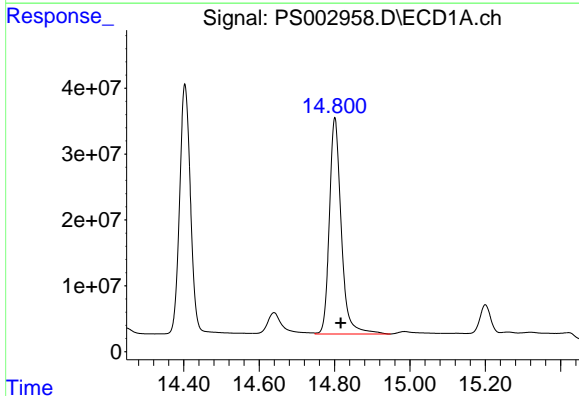


#11 2,4,5-TP (SILVEX)
 R.T.: 14.403 min
 Delta R.T.: -0.016 min
 Response: 769155875
 Conc: 305.42 ng/ml

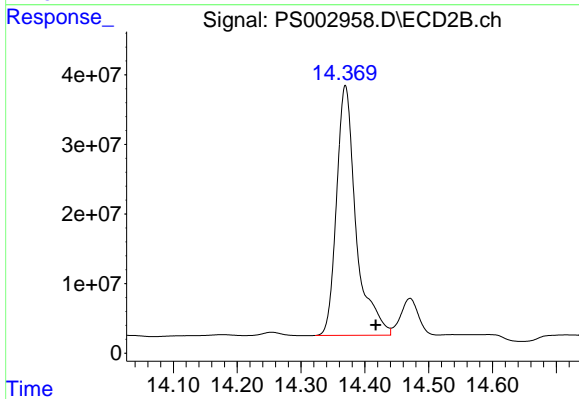
Instrument :
 ECD_S
 ClientSampleId :
 FK-BPM-01-D9-E9-D9A-E9AMS



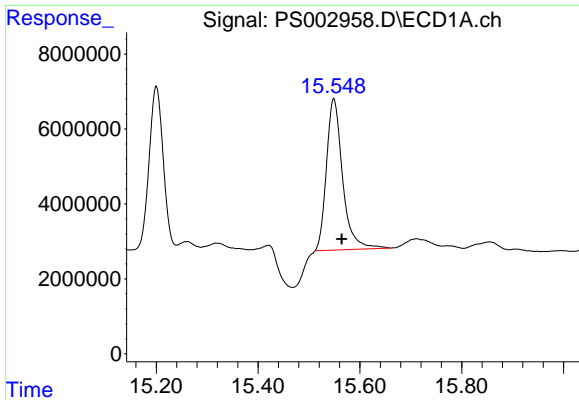
#11 2,4,5-TP (SILVEX)
 R.T.: 13.839 min
 Delta R.T.: -0.016 min
 Response: 772835471
 Conc: 311.58 ng/ml



#12 2,4,5-T
 R.T.: 14.801 min
 Delta R.T.: -0.016 min
 Response: 719082236
 Conc: 294.78 ng/ml



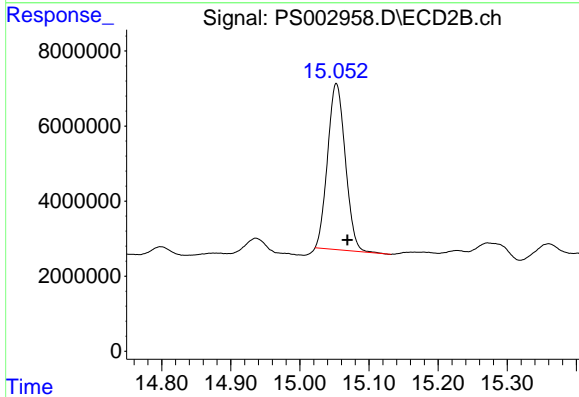
#12 2,4,5-T
 R.T.: 14.369 min
 Delta R.T.: -0.047 min
 Response: 762051945
 Conc: 398.25 ng/ml



#13 2,4-DB

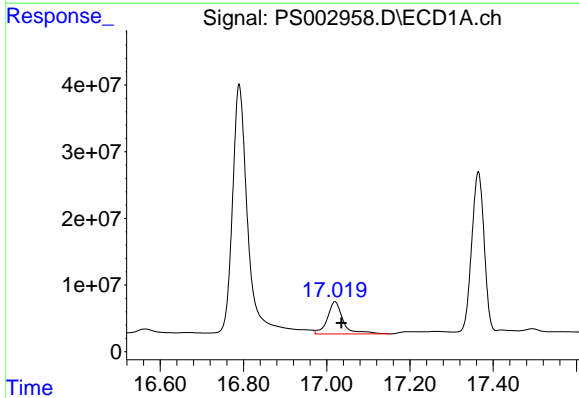
R.T.: 15.549 min
 Delta R.T.: -0.016 min
 Response: 88997067
 Conc: 340.43 ng/ml

Instrument :
 ECD_S
 ClientSampleId :
 FK-BPM-01-D9-E9-D9A-E9AMS



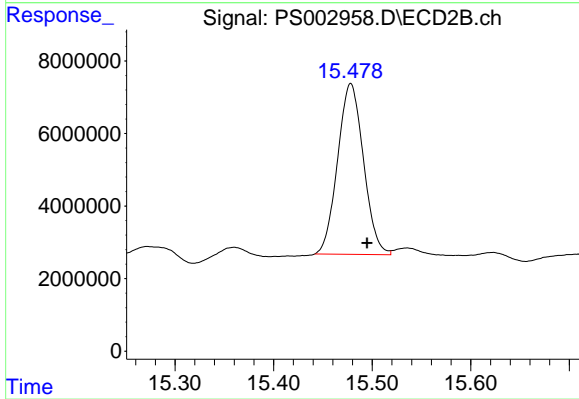
#13 2,4-DB

R.T.: 15.053 min
 Delta R.T.: -0.016 min
 Response: 78848984
 Conc: 310.43 ng/ml



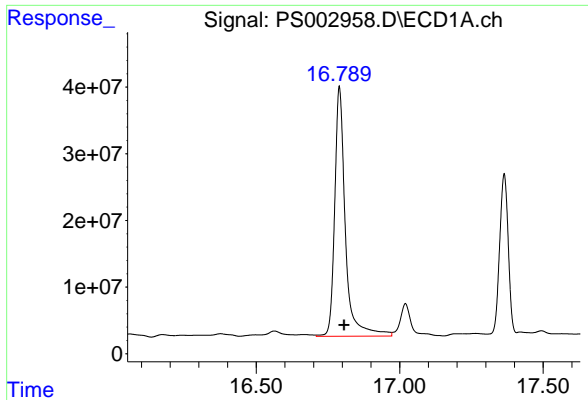
#14 DINOSEB

R.T.: 17.020 min
 Delta R.T.: -0.016 min
 Response: 127824172
 Conc: 67.94 ng/ml



#14 DINOSEB

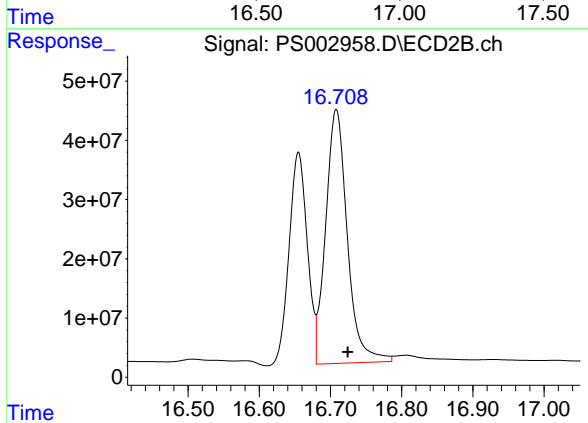
R.T.: 15.478 min
 Delta R.T.: -0.017 min
 Response: 85778514
 Conc: 48.93 ng/ml



#15 Picloram

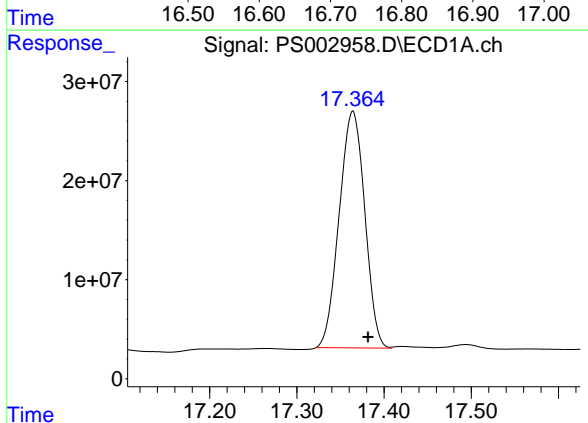
R.T.: 16.790 min
Delta R.T.: -0.016 min
Response: 971312426
Conc: 307.02 ng/ml

Instrument :
ECD_S
ClientSampleId :
FK-BPM-01-D9-E9-D9A-E9AMS



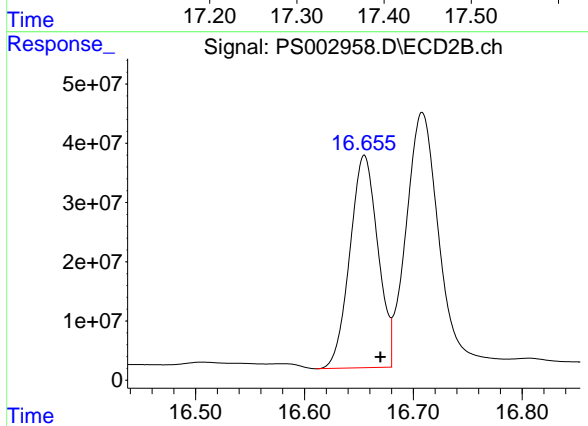
#15 Picloram

R.T.: 16.708 min
Delta R.T.: -0.016 min
Response: 904804025
Conc: 300.96 ng/ml



#16 DCPA

R.T.: 17.364 min
Delta R.T.: -0.017 min
Response: 487448184
Conc: 162.09 ng/ml



#16 DCPA

R.T.: 16.655 min
Delta R.T.: -0.015 min
Response: 640818548
Conc: 206.88 ng/ml