

Data Path : Z:\pestpcbsrv\HPCHEM1\ECD_S\Data\PS012820\
 Data File : PS008586.D
 Signal(s) : Signal #1: ECD1A.ch Signal #2: ECD2B.ch
 Acq On : 28 Jan 2020 19:00
 Operator : DD\AJ
 Sample : L1008-21
 Misc :
 ALS Vial : 7 Sample Multiplier: 1

Instrument :
 ECD_S
 ClientSampleId :
 CL-02-012420

Integration File signal 1: autoint1.e
 Integration File signal 2: autoint2.e
 Quant Time: Jan 29 03:56:31 2020
 Quant Method : Z:\pestpcbsrv\HPCHEM1\ECD_S\Method\PS010820.M
 Quant Title : 8080.M
 QLast Update : Wed Jan 08 11:00:59 2020
 Response via : Initial Calibration
 Integrator: ChemStation

Volume Inj. : 2 µl
 Signal #1 Phase : Rtx-CLPesticides Signal #2 Phase: Rtx-CLPesticides2
 Signal #1 Info : 30M x 0.32mm x0.5 Signal #2 Info : 30M x 0.32mm x 0.25µm

	Compound	RT#1	RT#2	Resp#1	Resp#2	ng/ml	ng/ml

System Monitoring Compounds							
4) S	2,4-DCAA	6.267	5.962	872.6E6	405.3E6	494.194	427.767
Target Compounds							
1) T	Dalapon	2.502	2.184	124.5E6	29941310	48.550	23.618 #
2) T	3,5-DICHL...	0.000	5.148	0	104.9E6	N.D.	75.047
3) T	4-Nitroph...	6.137	5.593	3147674	10474364	3.232	17.641 #
5) T	DICAMBA	6.495	6.095	14031785	10565852	2.042	2.642 #
6) T	MCPP	6.599	0.000	4053744	0	<MDL	N.D. #
7) T	MCPA	0.000	6.433	0	10994425	N.D.	2.575
8) T	DICHLORPROP	0.000	6.781	0	50382279	N.D.	52.148
9) T	2,4-D	7.447	7.028	17706312	10105466	9.734	8.621
10) T	Pentachlo...	7.750	0.000	30766521	0	1.266	N.D. #
12) T	2,4,5-T	0.000	8.289	0	20385199	N.D.	3.855
13) T	2,4-DB	9.029	0.000	32512809	0	23.454	N.D. #
14) T	DINOSEB	10.208	9.115	13295270	37304541	1.853	9.875 #

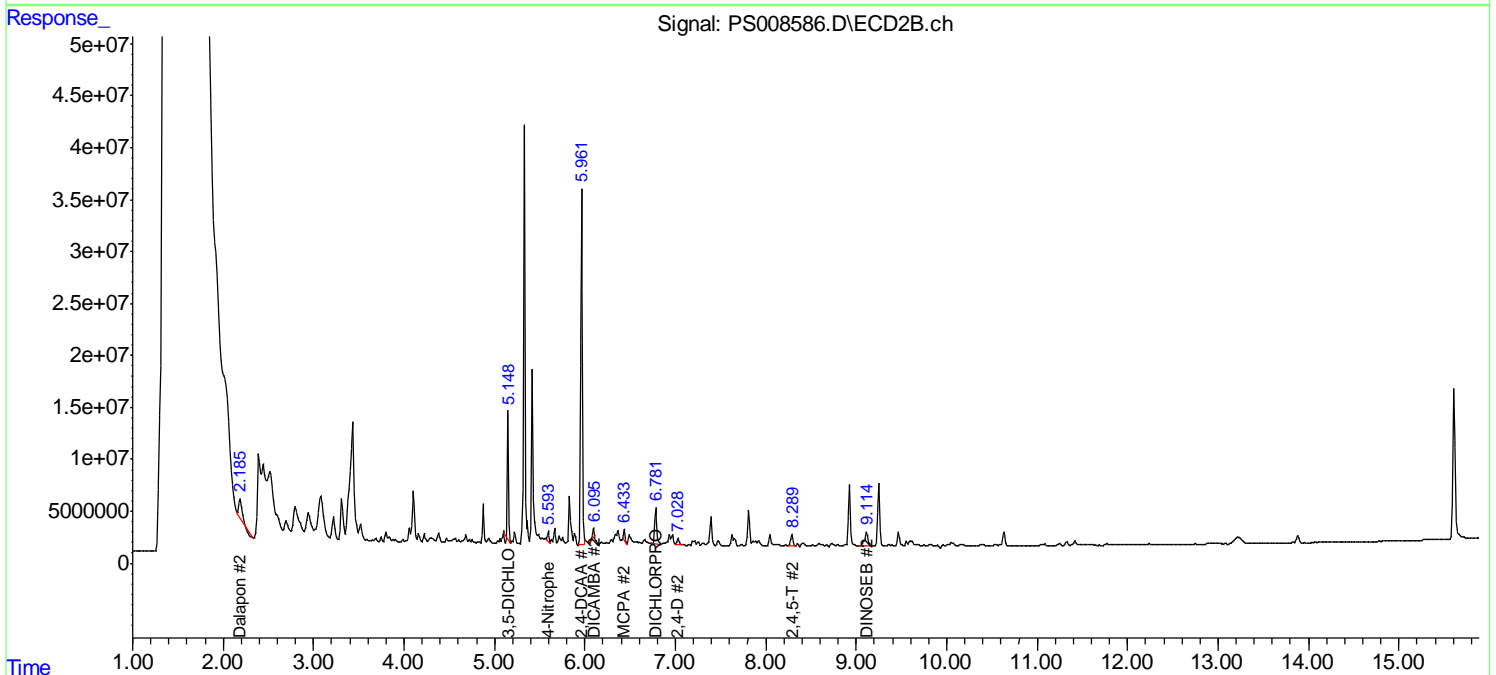
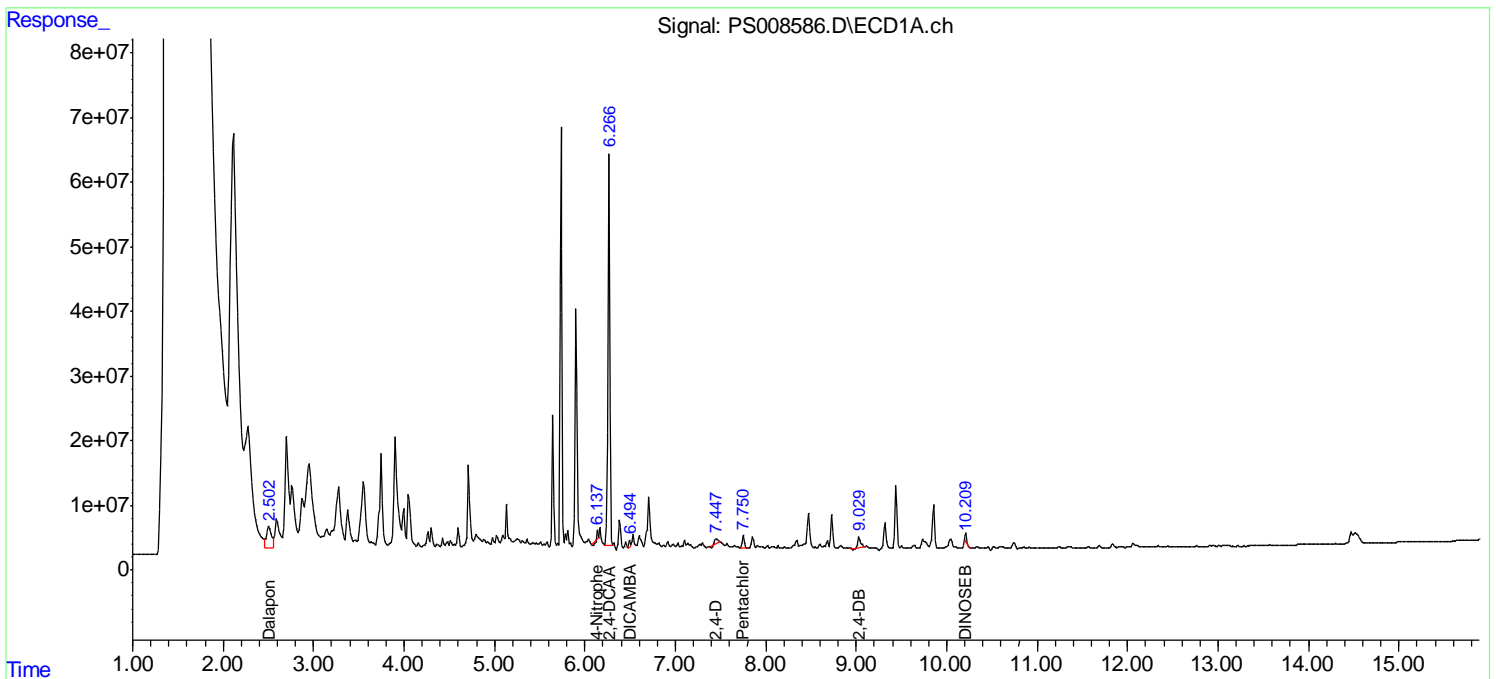
(f)=RT Delta > 1/2 Window (#)=Amounts differ by > 25% (m)=manual int.

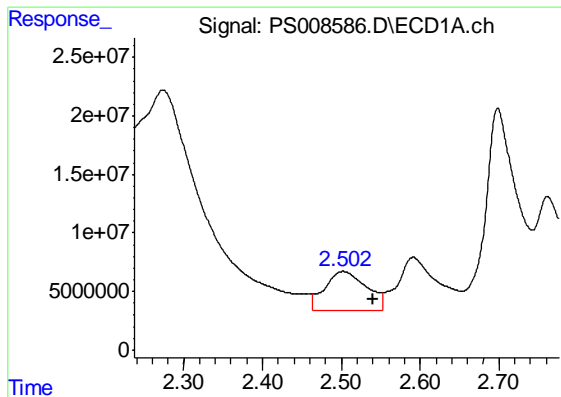
Data Path : Z:\pestpcbsrv\HPCHEM1\ECD_S\Data\PS012820\
 Data File : PS008586.D
 Signal(s) : Signal #1: ECD1A.ch Signal #2: ECD2B.ch
 Acq On : 28 Jan 2020 19:00
 Operator : DD\AJ
 Sample : L1008-21
 Misc :
 ALS Vial : 7 Sample Multiplier: 1

Instrument :
 ECD_S
 ClientSampled :
 CL-02-012420

Integration File signal 1: autoint1.e
 Integration File signal 2: autoint2.e
 Quant Time: Jan 29 03:56:31 2020
 Quant Method : Z:\pestpcbsrv\HPCHEM1\ECD_S\Method\PS010820.M
 Quant Title : 8080.M
 QLast Update : Wed Jan 08 11:00:59 2020
 Response via : Initial Calibration
 Integrator: ChemStation

Volume Inj. : 2 µl
 Signal #1 Phase : Rtx-CLPesticides Signal #2 Phase: Rtx-CLPesticides2
 Signal #1 Info : 30M x 0.32mm x0.5 Signal #2 Info : 30M x 0.32mm x 0.25µm

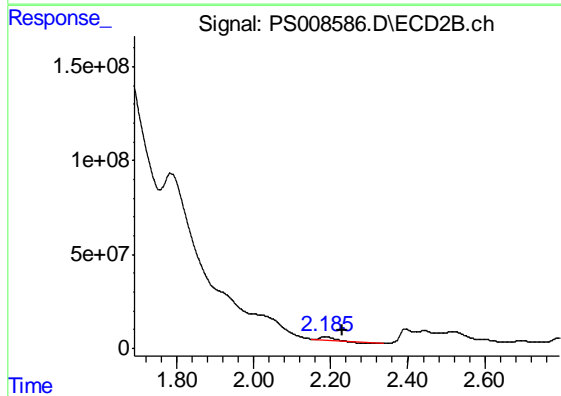




#1 Dalapon

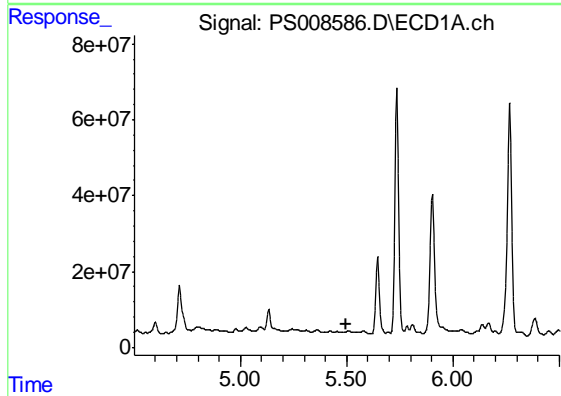
R.T.: 2.502 min
 Delta R.T.: -0.038 min
 Response: 124475237
 Conc: 48.55 ng/ml

Instrument :
 ECD_S
 ClientSampleId :
 CL-02-012420



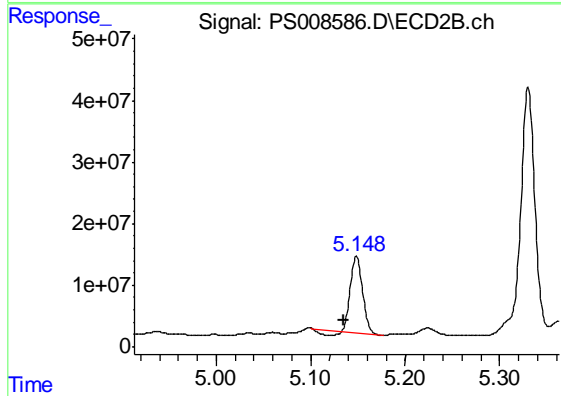
#1 Dalapon

R.T.: 2.184 min
 Delta R.T.: -0.047 min
 Response: 29941310
 Conc: 23.62 ng/ml



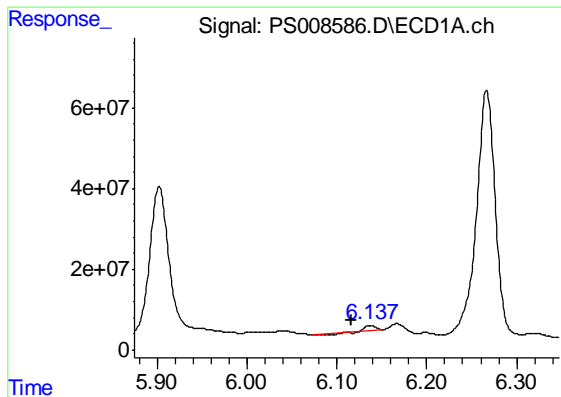
#2 3,5-DICHLOROBENZOIC ACID

R.T.: 0.000 min
 Exp R.T. : 5.501 min
 Response: 0
 Conc: N.D.



#2 3,5-DICHLOROBENZOIC ACID

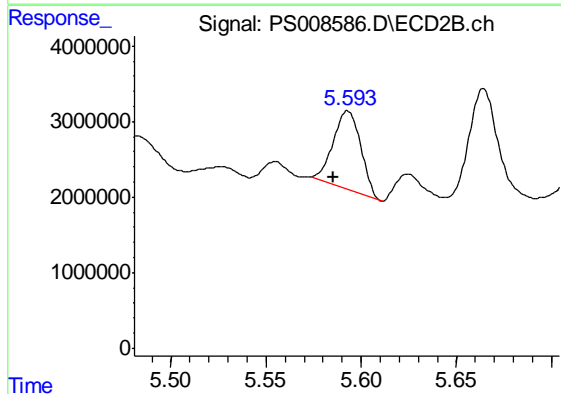
R.T.: 5.148 min
 Delta R.T.: 0.014 min
 Response: 104854372
 Conc: 75.05 ng/ml



#3 4-Nitrophenol

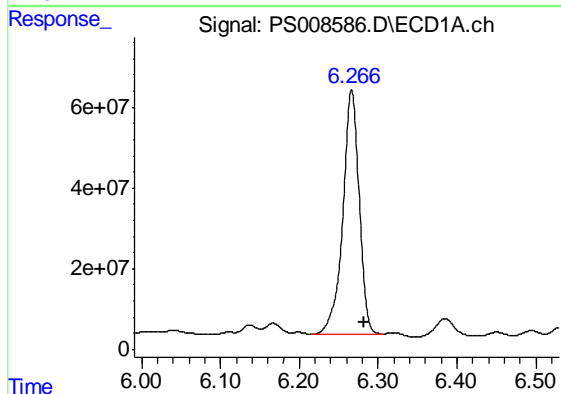
R.T.: 6.137 min
 Delta R.T.: 0.021 min
 Response: 3147674
 Conc: 3.23 ng/ml

Instrument :
 ECD_S
 ClientSampleId :
 CL-02-012420



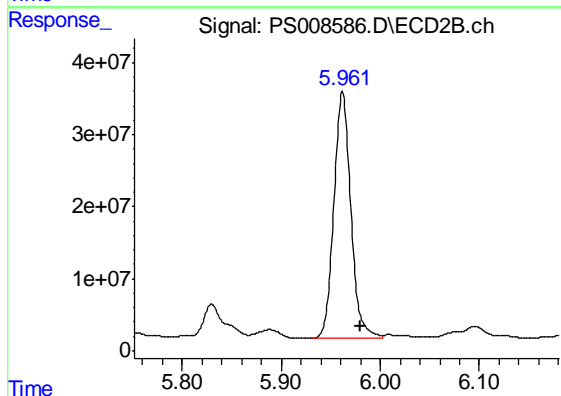
#3 4-Nitrophenol

R.T.: 5.593 min
 Delta R.T.: 0.008 min
 Response: 10474364
 Conc: 17.64 ng/ml



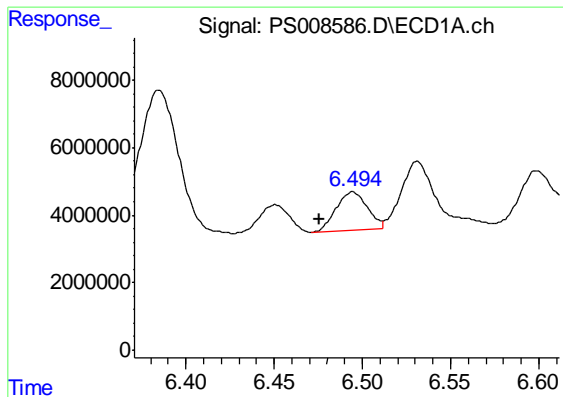
#4 2,4-DCAA

R.T.: 6.267 min
 Delta R.T.: -0.016 min
 Response: 872600342
 Conc: 494.19 ng/ml



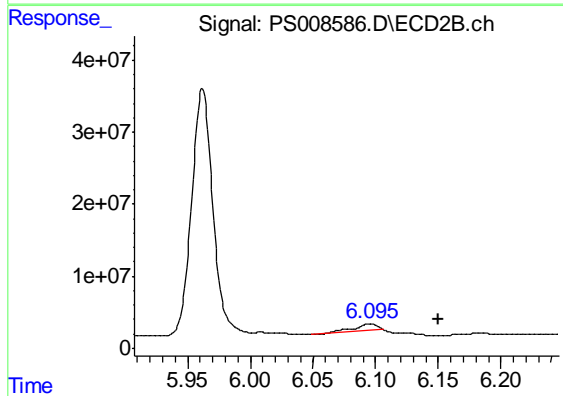
#4 2,4-DCAA

R.T.: 5.962 min
 Delta R.T.: -0.017 min
 Response: 405293856
 Conc: 427.77 ng/ml

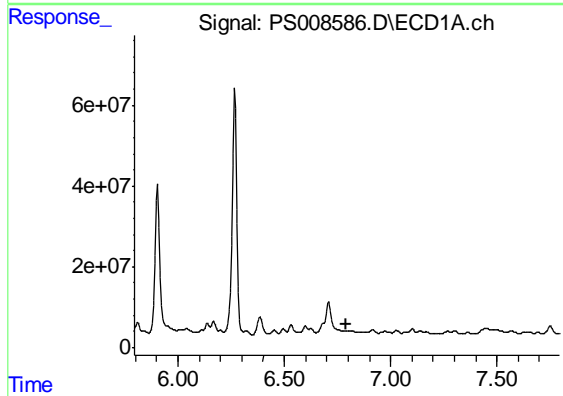


#5 DICAMBA
 R.T.: 6.495 min
 Delta R.T.: 0.019 min
 Response: 14031785
 Conc: 2.04 ng/ml

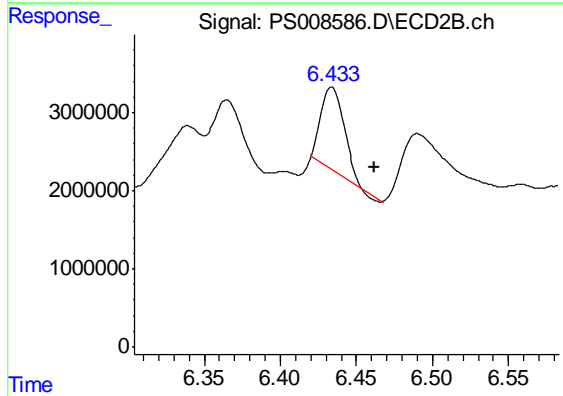
Instrument :
 ECD_S
 ClientSampleId :
 CL-02-012420



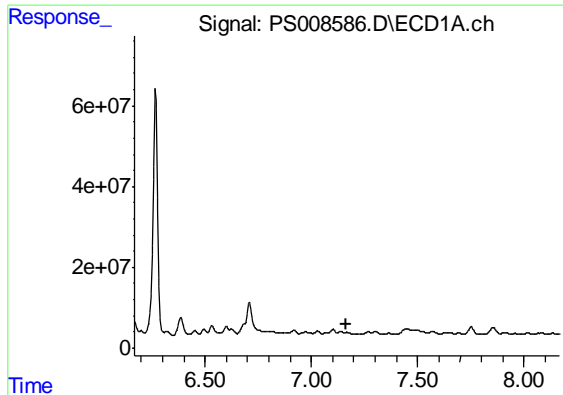
#5 DICAMBA
 R.T.: 6.095 min
 Delta R.T.: -0.054 min
 Response: 10565852
 Conc: 2.64 ng/ml



#7 MCPA
 R.T.: 0.000 min
 Exp R.T. : 6.794 min
 Response: 0
 Conc: N.D.

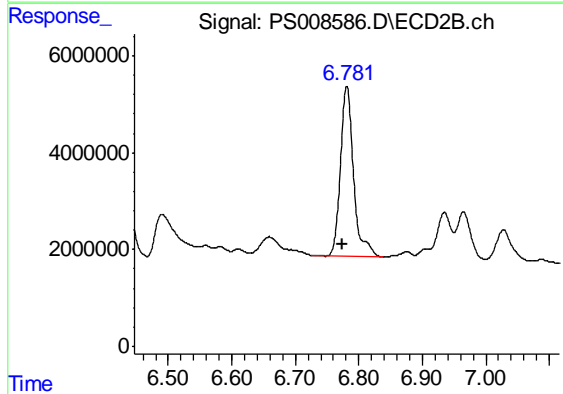


#7 MCPA
 R.T.: 6.433 min
 Delta R.T.: -0.028 min
 Response: 10994425
 Conc: 2.57 ug/ml

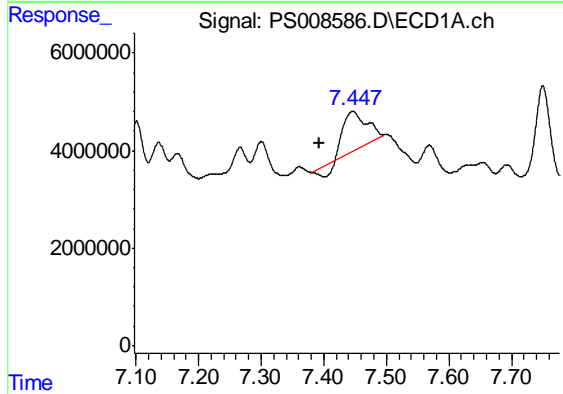


#8 DICHLORPROP
 R.T.: 0.000 min
 Exp R.T. : 7.167 min
 Response: 0
 Conc: N.D.

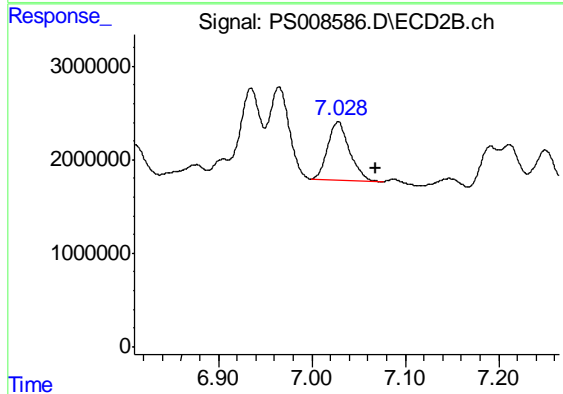
Instrument :
 ECD_S
 ClientSampleId :
 CL-02-012420



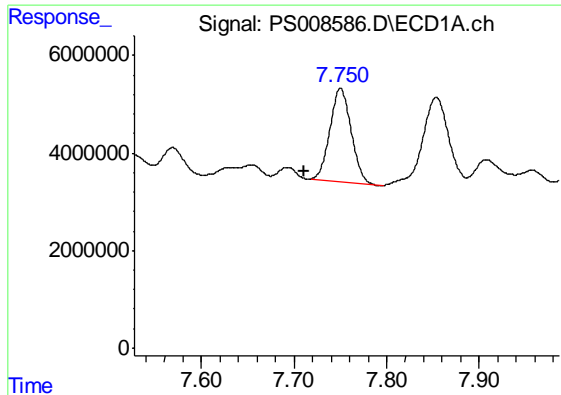
#8 DICHLORPROP
 R.T.: 6.781 min
 Delta R.T.: 0.006 min
 Response: 50382279
 Conc: 52.15 ng/ml



#9 2,4-D
 R.T.: 7.447 min
 Delta R.T.: 0.053 min
 Response: 17706312
 Conc: 9.73 ng/ml

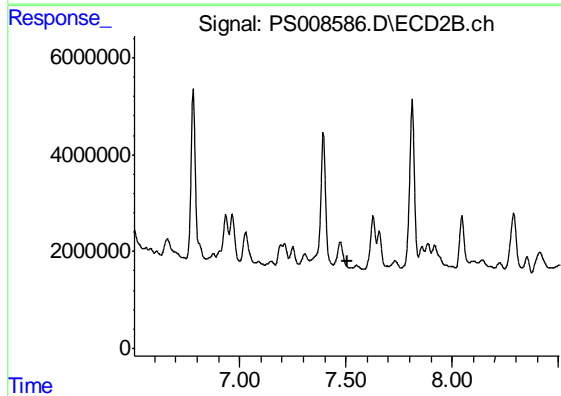


#9 2,4-D
 R.T.: 7.028 min
 Delta R.T.: -0.040 min
 Response: 10105466
 Conc: 8.62 ng/ml

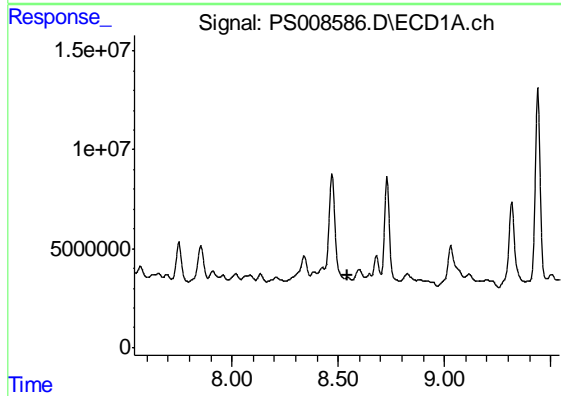


#10 Pentachlorophenol
 R.T.: 7.750 min
 Delta R.T.: 0.040 min
 Response: 30766521
 Conc: 1.27 ng/ml

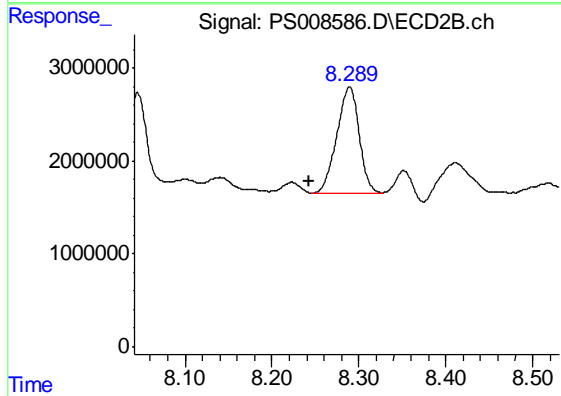
Instrument :
 ECD_S
ClientSampleId :
 CL-02-012420



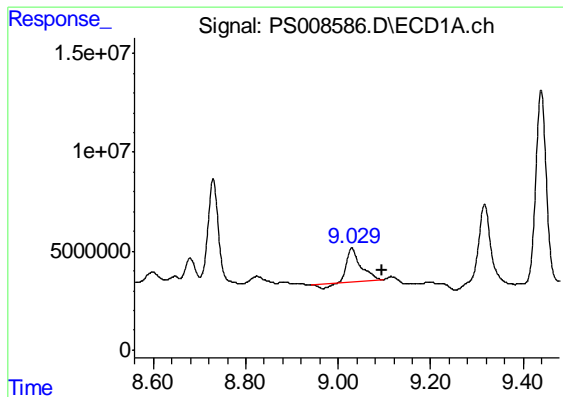
#10 Pentachlorophenol
 R.T.: 0.000 min
 Exp R.T. : 7.505 min
 Response: 0
 Conc: N.D.



#12 2,4,5-T
 R.T.: 0.000 min
 Exp R.T. : 8.541 min
 Response: 0
 Conc: N.D.

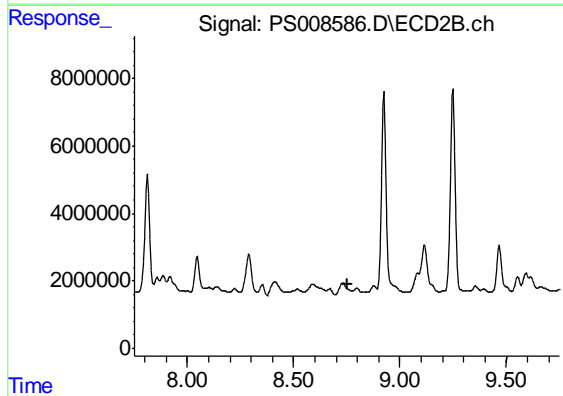


#12 2,4,5-T
 R.T.: 8.289 min
 Delta R.T.: 0.046 min
 Response: 20385199
 Conc: 3.85 ng/ml

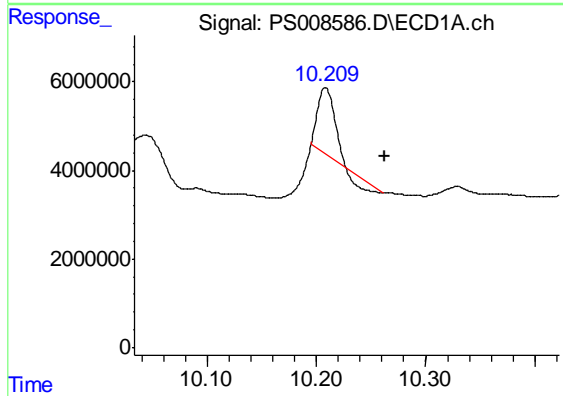


#13 2,4-DB
 R.T.: 9.029 min
 Delta R.T.: -0.065 min
 Response: 32512809
 Conc: 23.45 ng/ml

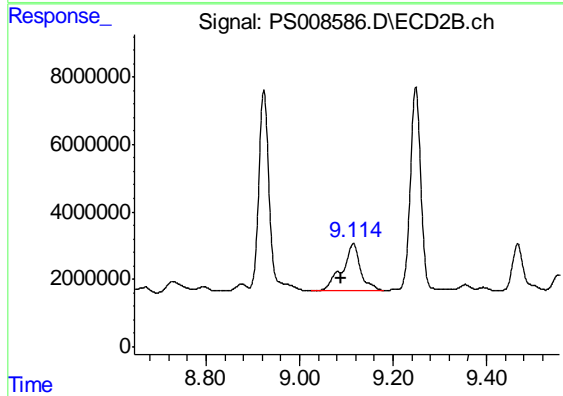
Instrument :
 ECD_S
 ClientSampleId :
 CL-02-012420



#13 2,4-DB
 R.T.: 0.000 min
 Exp R.T. : 8.751 min
 Response: 0
 Conc: N.D.



#14 DINOSEB
 R.T.: 10.208 min
 Delta R.T.: -0.054 min
 Response: 13295270
 Conc: 1.85 ng/ml



#14 DINOSEB
 R.T.: 9.115 min
 Delta R.T.: 0.027 min
 Response: 37304541
 Conc: 9.87 ng/ml