

Data Path : Z:\pestpcbsrv\HPCHEM1\ECD_S\Data\PS012820\
 Data File : PS008589.D
 Signal(s) : Signal #1: ECD1A.ch Signal #2: ECD2B.ch
 Acq On : 28 Jan 2020 20:06
 Operator : DD\AJ
 Sample : L1010-12
 Misc :
 ALS Vial : 10 Sample Multiplier: 1

Instrument :
 ECD_S
 ClientSampleId :
 OK-01-012420

Integration File signal 1: autoint1.e
 Integration File signal 2: autoint2.e
 Quant Time: Jan 29 03:58:57 2020
 Quant Method : Z:\pestpcbsrv\HPCHEM1\ECD_S\Method\PS010820.M
 Quant Title : 8080.M
 QLast Update : Wed Jan 08 11:00:59 2020
 Response via : Initial Calibration
 Integrator: ChemStation

Volume Inj. : 2 µl
 Signal #1 Phase : Rtx-CLPesticides Signal #2 Phase: Rtx-CLPesticides2
 Signal #1 Info : 30M x 0.32mm x0.5 Signal #2 Info : 30M x 0.32mm x 0.25µm

Compound	RT#1	RT#2	Resp#1	Resp#2	ng/ml	ng/ml

System Monitoring Compounds						
4) S 2,4-DCAA	6.268	5.961	893.6E6	425.3E6	506.113	448.830
Target Compounds						
1) T Dalapon	2.502	2.184	148.0E6	44195256	57.733	34.861 #
2) T 3,5-DICHL...	0.000	5.148	0	113.5E6	N.D.	81.241
3) T 4-Nitroph...	6.138	0.000	11596915	0	11.907	N.D. #
5) T DICAMBA	6.532	6.096	20012297	12420541	2.912	3.106
6) T MCPP	6.709	0.000	260.0E6	0	51.019	N.D. #
7) T MCPA	0.000	6.484	0	53316318	N.D.	12.487
8) T DICHLORPROP	0.000	6.781	0	43909874	N.D.	45.448
9) T 2,4-D	0.000	7.028	0	5810380	N.D.	4.957
10) T Pentachlo...	7.752	0.000	31858127	0	1.310	N.D. #
12) T 2,4,5-T	8.472	8.287	95869621	16273943	10.391	3.077 #
13) T 2,4-DB	9.029	0.000	28552248	0	20.597	N.D. #
14) T DINOSEB	10.210	9.114	10505027	38051778	1.464	10.073 #

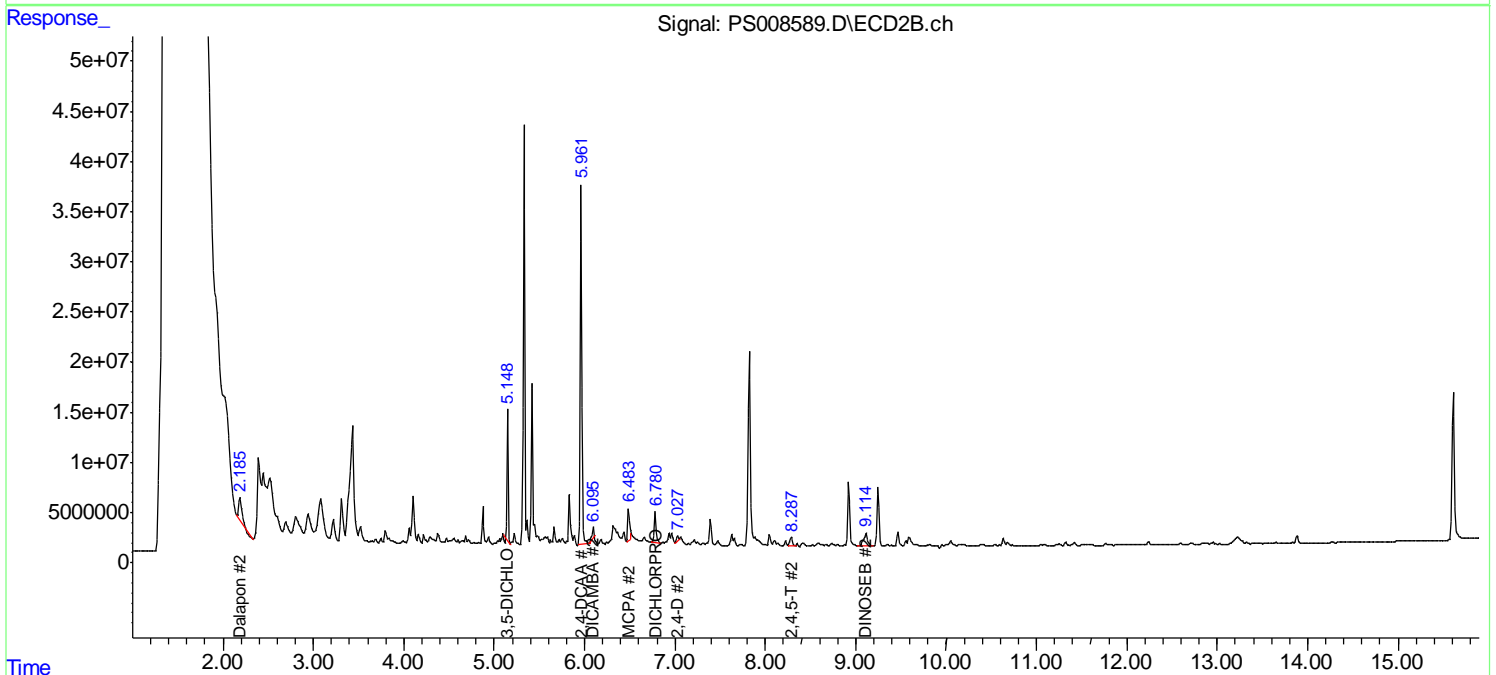
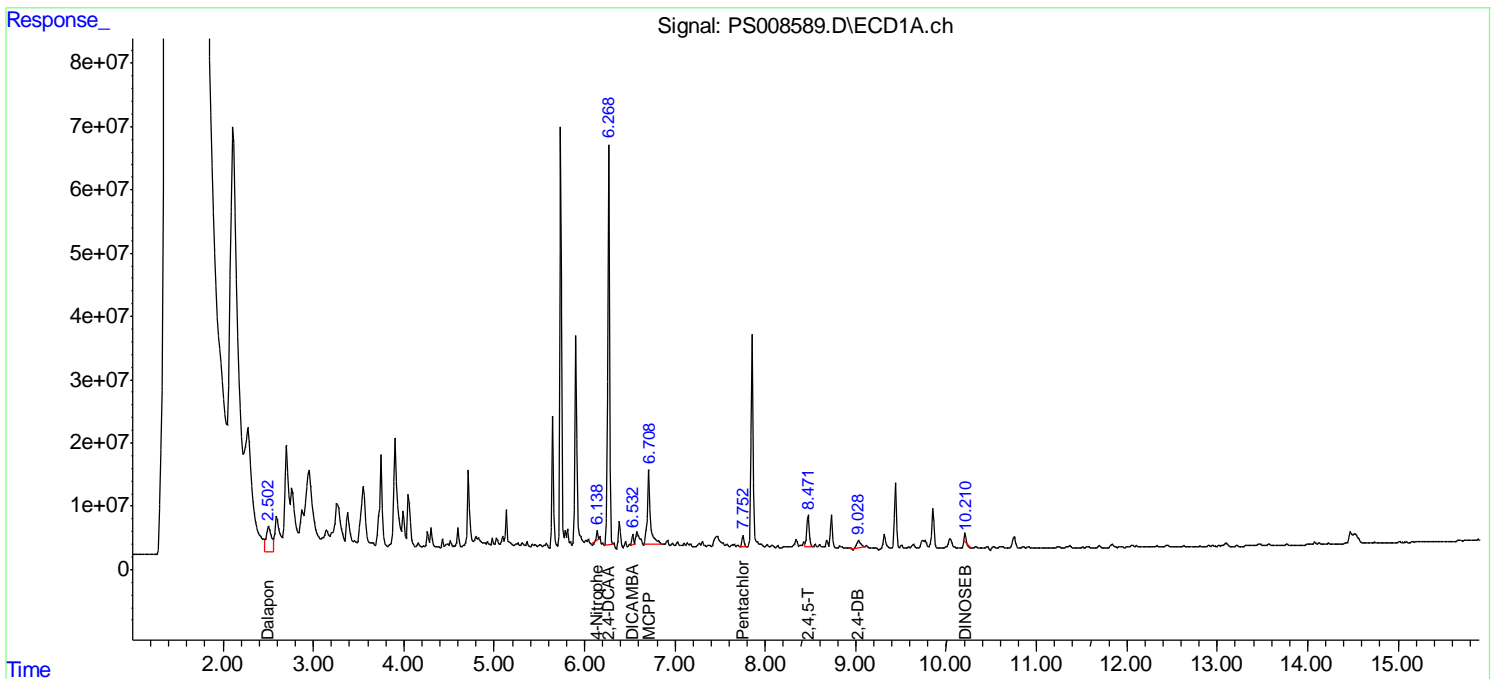
(f)=RT Delta > 1/2 Window (#)=Amounts differ by > 25% (m)=manual int.

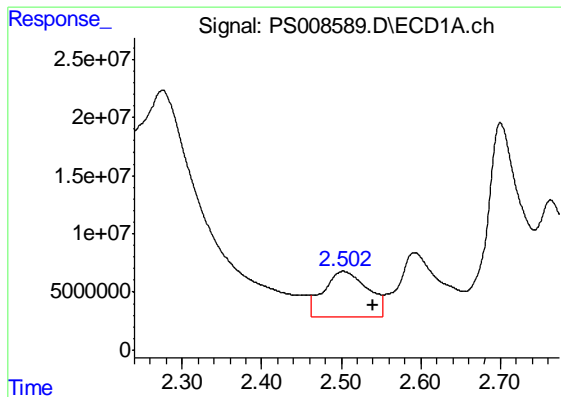
Data Path : Z:\pestpcbsrv\HPCHEM1\ECD_S\Data\PS012820\
 Data File : PS008589.D
 Signal(s) : Signal #1: ECD1A.ch Signal #2: ECD2B.ch
 Acq On : 28 Jan 2020 20:06
 Operator : DD\AJ
 Sample : L1010-12
 Misc :
 ALS Vial : 10 Sample Multiplier: 1

Instrument :
 ECD_S
 ClientSampled :
 OK-01-012420

Integration File signal 1: autoint1.e
 Integration File signal 2: autoint2.e
 Quant Time: Jan 29 03:58:57 2020
 Quant Method : Z:\pestpcbsrv\HPCHEM1\ECD_S\Method\PS010820.M
 Quant Title : 8080.M
 QLast Update : Wed Jan 08 11:00:59 2020
 Response via : Initial Calibration
 Integrator: ChemStation

Volume Inj. : 2 µl
 Signal #1 Phase : Rtx-CLPesticides Signal #2 Phase: Rtx-CLPesticides2
 Signal #1 Info : 30M x 0.32mm x0.5 Signal #2 Info : 30M x 0.32mm x 0.25µm

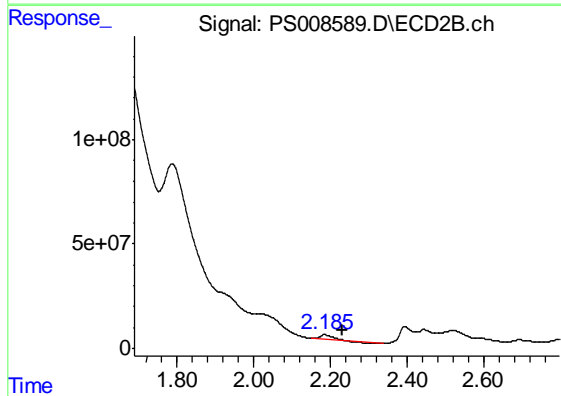




#1 Dalapon

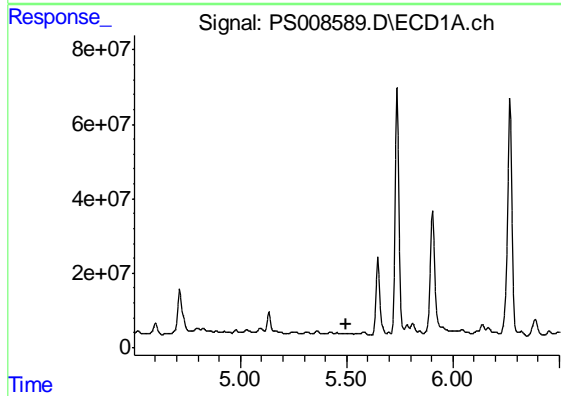
R.T.: 2.502 min
 Delta R.T.: -0.038 min
 Response: 148019398
 Conc: 57.73 ng/ml

Instrument :
 ECD_S
 ClientSampleId :
 OK-01-012420



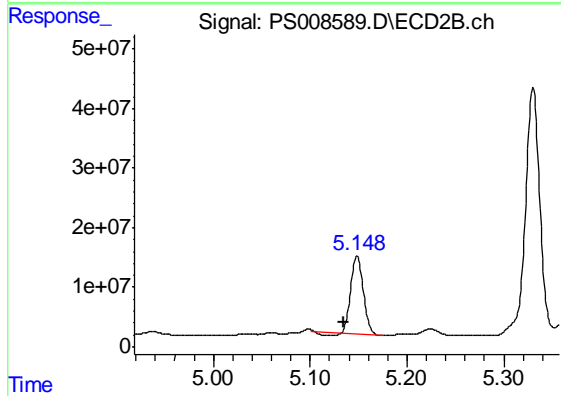
#1 Dalapon

R.T.: 2.184 min
 Delta R.T.: -0.047 min
 Response: 44195256
 Conc: 34.86 ng/ml



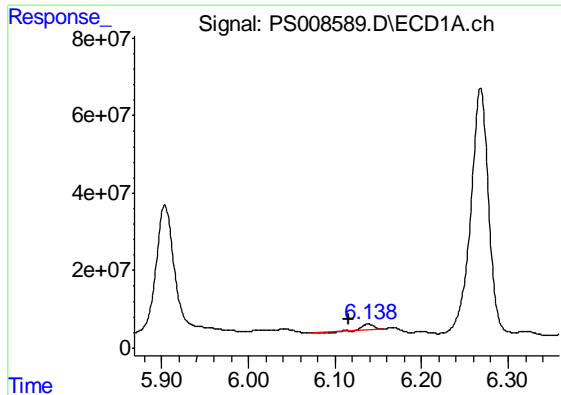
#2 3,5-DICHLOROBENZOIC ACID

R.T.: 0.000 min
 Exp R.T. : 5.501 min
 Response: 0
 Conc: N.D.



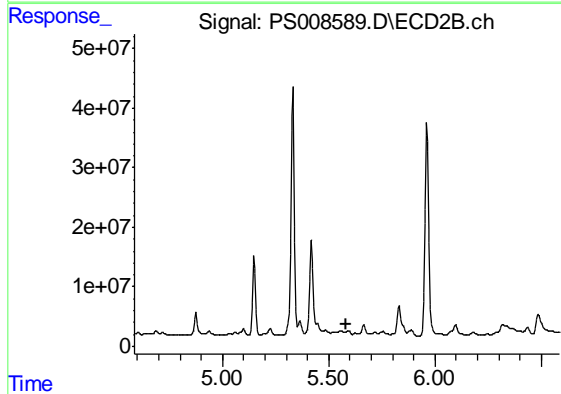
#2 3,5-DICHLOROBENZOIC ACID

R.T.: 5.148 min
 Delta R.T.: 0.014 min
 Response: 113507711
 Conc: 81.24 ng/ml

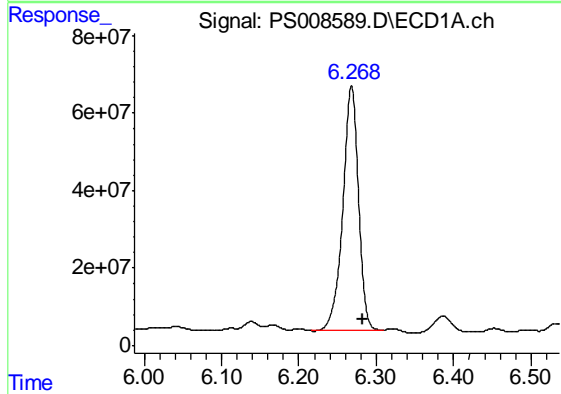


#3 4-Nitrophenol
 R.T.: 6.138 min
 Delta R.T.: 0.022 min
 Response: 11596915
 Conc: 11.91 ng/ml

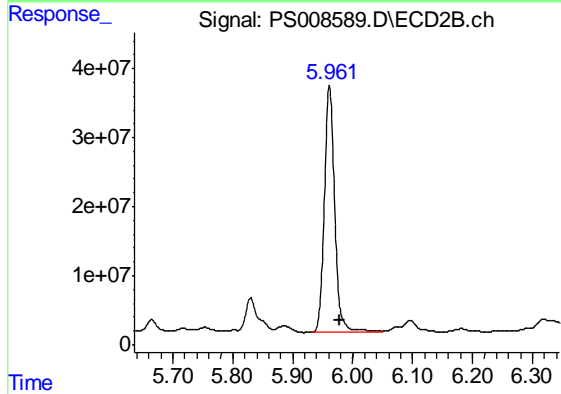
Instrument :
 ECD_S
 ClientSampled :
 OK-01-012420



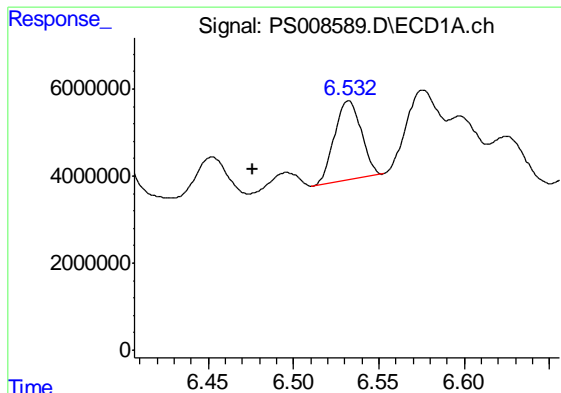
#3 4-Nitrophenol
 R.T.: 0.000 min
 Exp R.T. : 5.585 min
 Response: 0
 Conc: N.D.



#4 2,4-DCAA
 R.T.: 6.268 min
 Delta R.T.: -0.015 min
 Response: 893645927
 Conc: 506.11 ng/ml



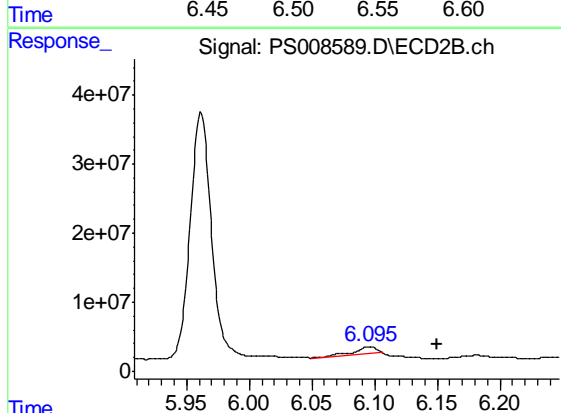
#4 2,4-DCAA
 R.T.: 5.961 min
 Delta R.T.: -0.018 min
 Response: 425250047
 Conc: 448.83 ng/ml



#5 DICAMBA

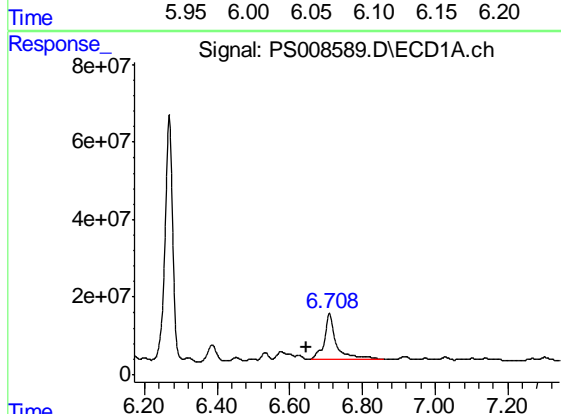
R.T.: 6.532 min
 Delta R.T.: 0.056 min
 Response: 20012297
 Conc: 2.91 ng/ml

Instrument :
 ECD_S
 ClientSampleId :
 OK-01-012420



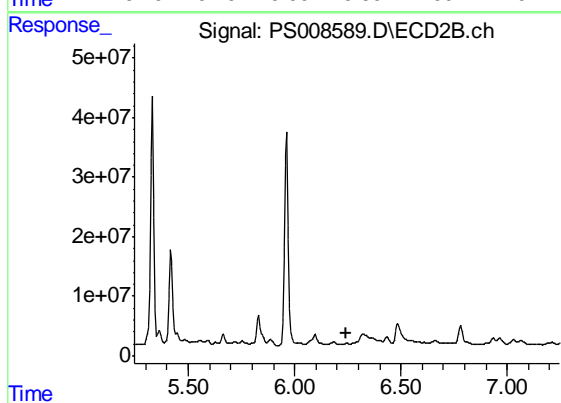
#5 DICAMBA

R.T.: 6.096 min
 Delta R.T.: -0.054 min
 Response: 12420541
 Conc: 3.11 ng/ml



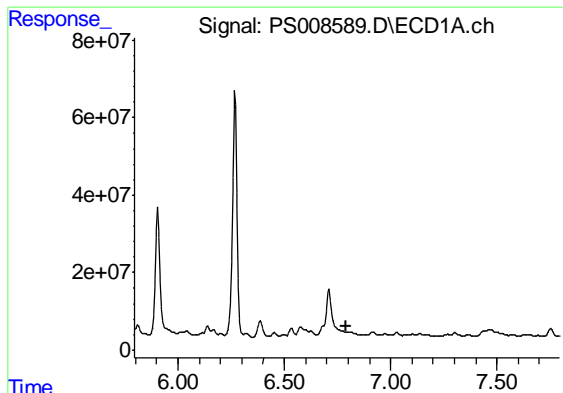
#6 MCPP

R.T.: 6.709 min
 Delta R.T.: 0.063 min
 Response: 260034800
 Conc: 51.02 ug/ml



#6 MCPP

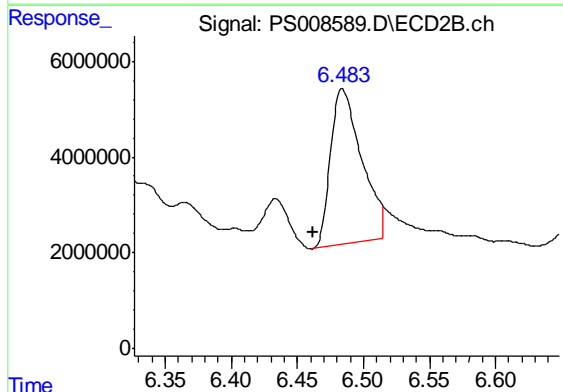
R.T.: 0.000 min
 Exp R.T. : 6.246 min
 Response: 0
 Conc: N.D.



#7 MCPA

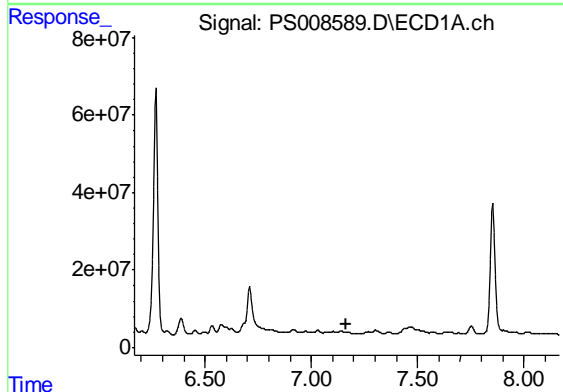
R.T.: 0.000 min
 Exp R.T. : 6.794 min
 Response: 0
 Conc: N.D.

Instrument :
 ECD_S
 ClientSampleId :
 OK-01-012420



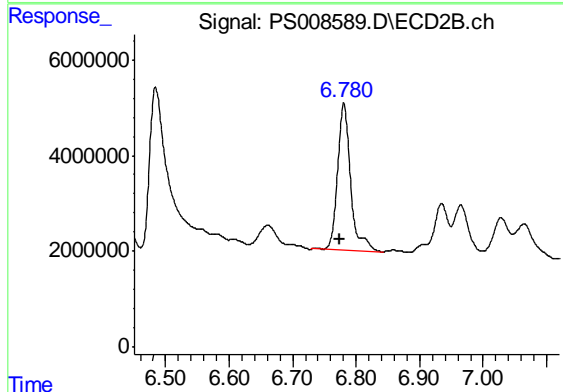
#7 MCPA

R.T.: 6.484 min
 Delta R.T.: 0.023 min
 Response: 53316318
 Conc: 12.49 ug/ml



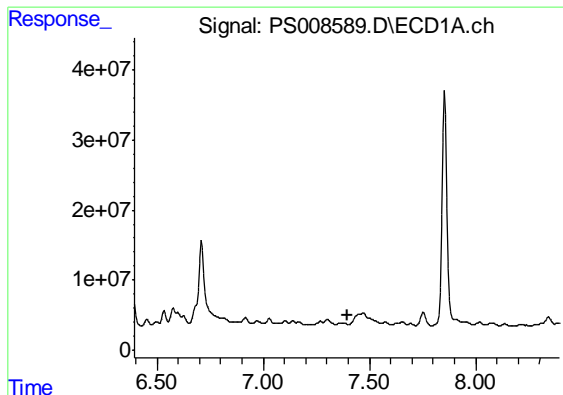
#8 DICHLORPROP

R.T.: 0.000 min
 Exp R.T. : 7.167 min
 Response: 0
 Conc: N.D.



#8 DICHLORPROP

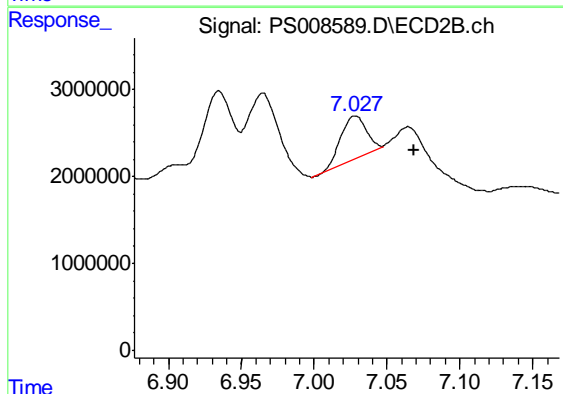
R.T.: 6.781 min
 Delta R.T.: 0.006 min
 Response: 43909874
 Conc: 45.45 ng/ml



#9 2,4-D

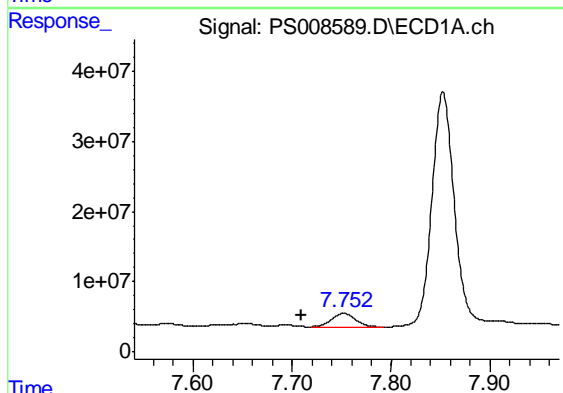
R.T.: 0.000 min
 Exp R.T. : 7.394 min
 Response: 0
 Conc: N.D.

Instrument :
 ECD_S
 ClientSampleId :
 OK-01-012420



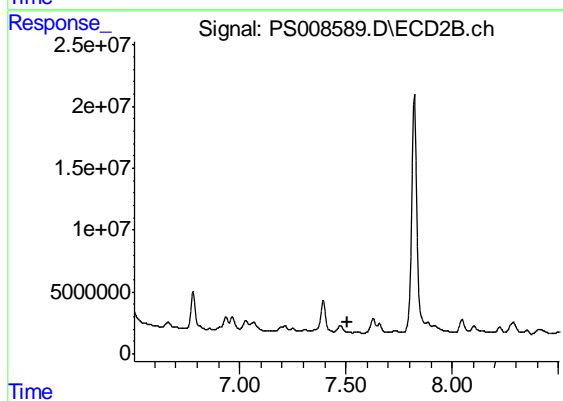
#9 2,4-D

R.T.: 7.028 min
 Delta R.T.: -0.041 min
 Response: 5810380
 Conc: 4.96 ng/ml



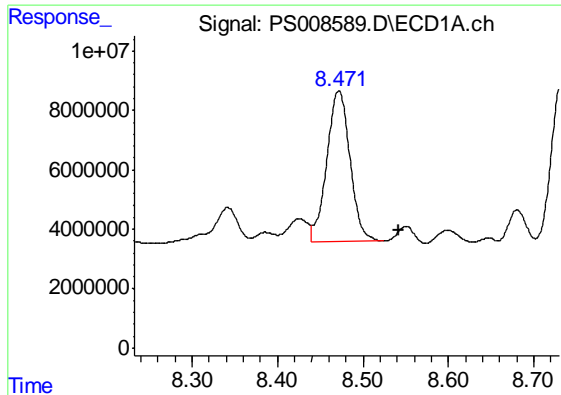
#10 Pentachlorophenol

R.T.: 7.752 min
 Delta R.T.: 0.042 min
 Response: 31858127
 Conc: 1.31 ng/ml



#10 Pentachlorophenol

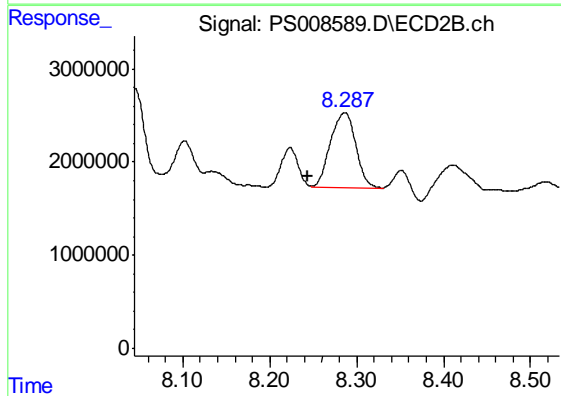
R.T.: 0.000 min
 Exp R.T. : 7.505 min
 Response: 0
 Conc: N.D.



#12 2,4,5-T

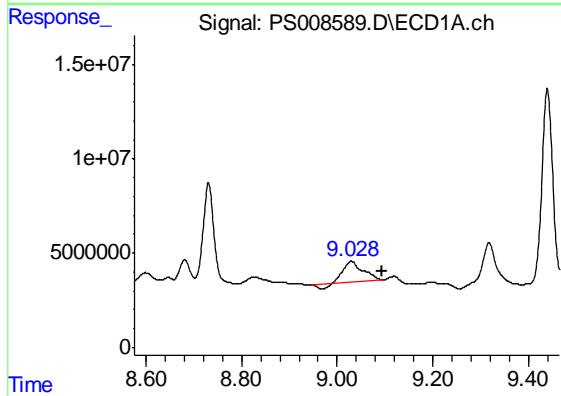
R.T.: 8.472 min
 Delta R.T.: -0.070 min
 Response: 95869621
 Conc: 10.39 ng/ml

Instrument :
 ECD_S
 ClientSampleId :
 OK-01-012420



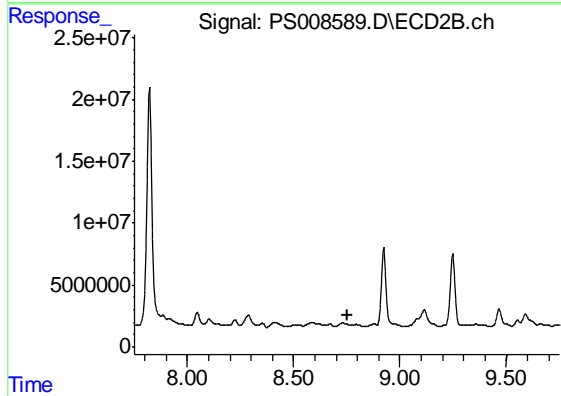
#12 2,4,5-T

R.T.: 8.287 min
 Delta R.T.: 0.043 min
 Response: 16273943
 Conc: 3.08 ng/ml



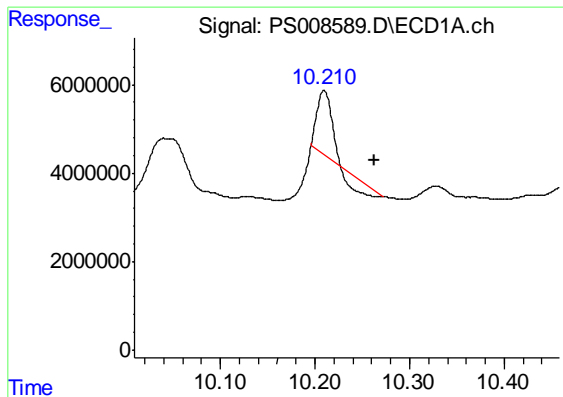
#13 2,4-DB

R.T.: 9.029 min
 Delta R.T.: -0.065 min
 Response: 28552248
 Conc: 20.60 ng/ml



#13 2,4-DB

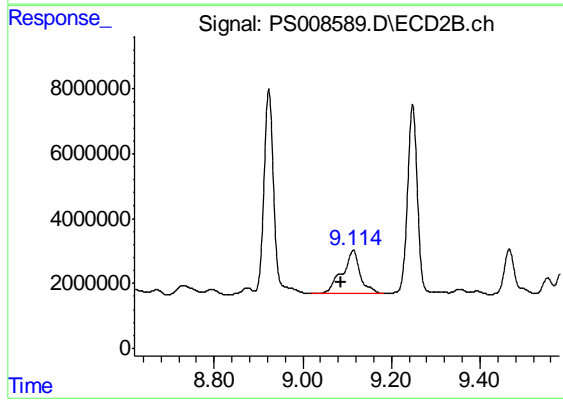
R.T.: 0.000 min
 Exp R.T. : 8.751 min
 Response: 0
 Conc: N.D.



#14 DINOSEB

R.T.: 10.210 min
Delta R.T.: -0.053 min
Response: 10505027
Conc: 1.46 ng/ml

Instrument :
ECD_S
ClientSampleId :
OK-01-012420



#14 DINOSEB

R.T.: 9.114 min
Delta R.T.: 0.026 min
Response: 38051778
Conc: 10.07 ng/ml