

Data Path : Z:\pestpcbsrv\HPCHEM1\ECD_S\Data\PS013125\
 Data File : PS029009.D
 Signal(s) : Signal #1: ECD1A.ch Signal #2: ECD2B.ch
 Acq On : 31 Jan 2025 16:44
 Operator : AR\AJ
 Sample : PB166416BL
 Misc :
 ALS Vial : 4 Sample Multiplier: 1

Instrument :
 ECD_S
 ClientSampleId :

Integration File signal 1: autoint1.e
 Integration File signal 2: autoint2.e
 Quant Time: Feb 01 00:26:11 2025
 Quant Method : Z:\pestpcbsrv\HPCHEM1\ECD_S\Method\PS011425.M
 Quant Title : 8080.M
 QLast Update : Tue Jan 14 12:25:39 2025
 Response via : Initial Calibration
 Integrator: ChemStation

Volume Inj. : 1 µl
 Signal #1 Phase : ZB-MR2 Signal #2 Phase: ZB-MR2
 Signal #1 Info : 30M x 0.32mm x0.5 Signal #2 Info : 30M x 0.32mm x 0.25µm

Compound	RT#1	RT#2	Resp#1	Resp#2	ng/ml	ng/ml

System Monitoring Compounds						
4) S 2,4-DCAA	7.198	7.668	1293.2E6	471.8E6	464.499	422.849
Target Compounds						
1) T Dalapon	2.585f	2.628f	252.5E6	240.7E6	84.684	118.001 #
2) T 3,5-DICHL...	6.391	6.659	2275006	15113044	<MDL	9.145 #
3) T 4-Nitroph...	6.998	7.202	6311075	-1707215	3.561	N.D. #
5) T DICAMBA	7.384	7.860	4168085	16685049	<MDL	2.996 #
7) T MCPA	7.712	0.000	18590742	0	1.887	N.D. #
8) T DICHLORPROP	8.108	8.622f	2134789	53615943	<MDL	38.145 #
10) T Pentachlo...	8.618	9.427	18957152	5438548	<MDL	<MDL #
11) T 2,4,5-TP ...	9.159f	9.839f	2173114	29075151	<MDL	3.087 #
12) T 2,4,5-T	9.485	10.193f	15531171	91727842	<MDL	10.182 #
13) T 2,4-DB	10.055	0.000	247.7E6	0	69.836	N.D. #
14) T DINOSEB	11.254	11.165	184.2E6	15786334	11.133	2.460 #
15) T Picloram	11.073	12.248	1123.0E6	344.5E6	35.592	25.672 #
16) T DCPA	11.522f	12.248f	172.2E6	344.5E6	6.004	30.347 #

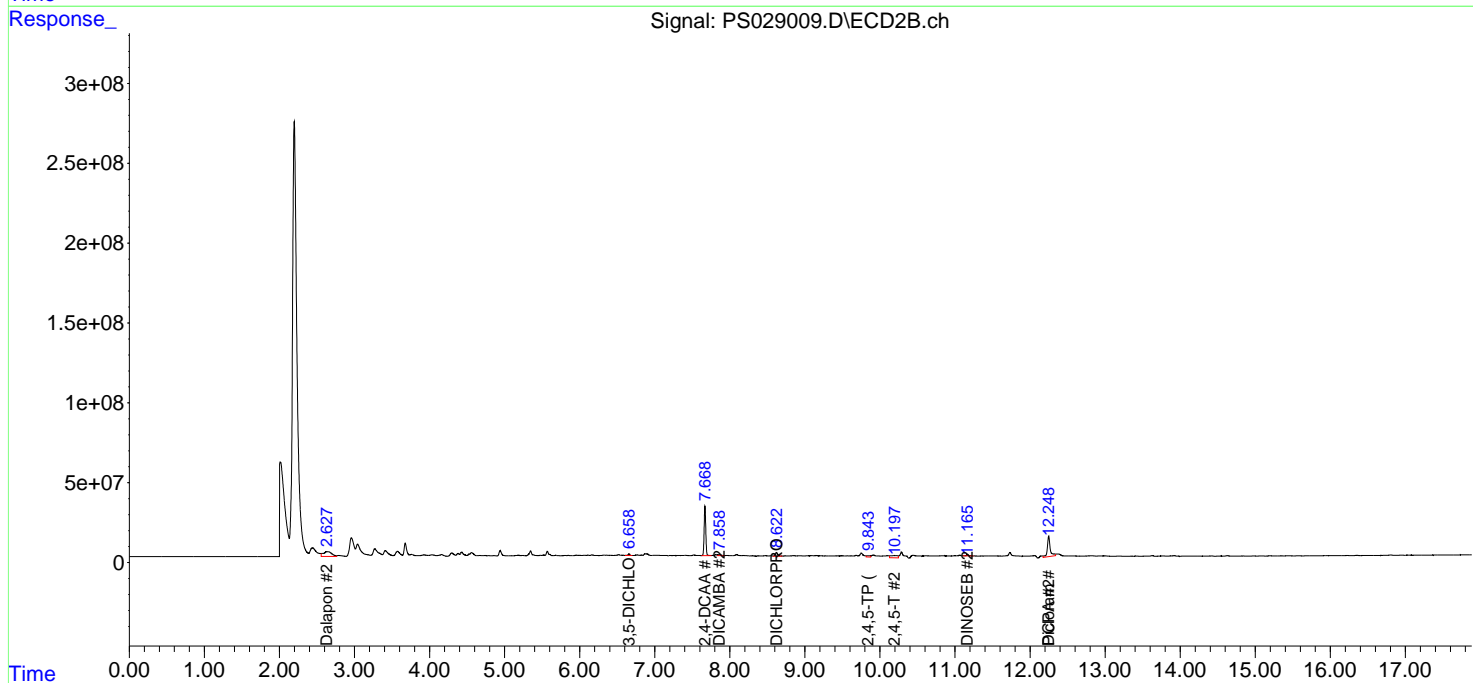
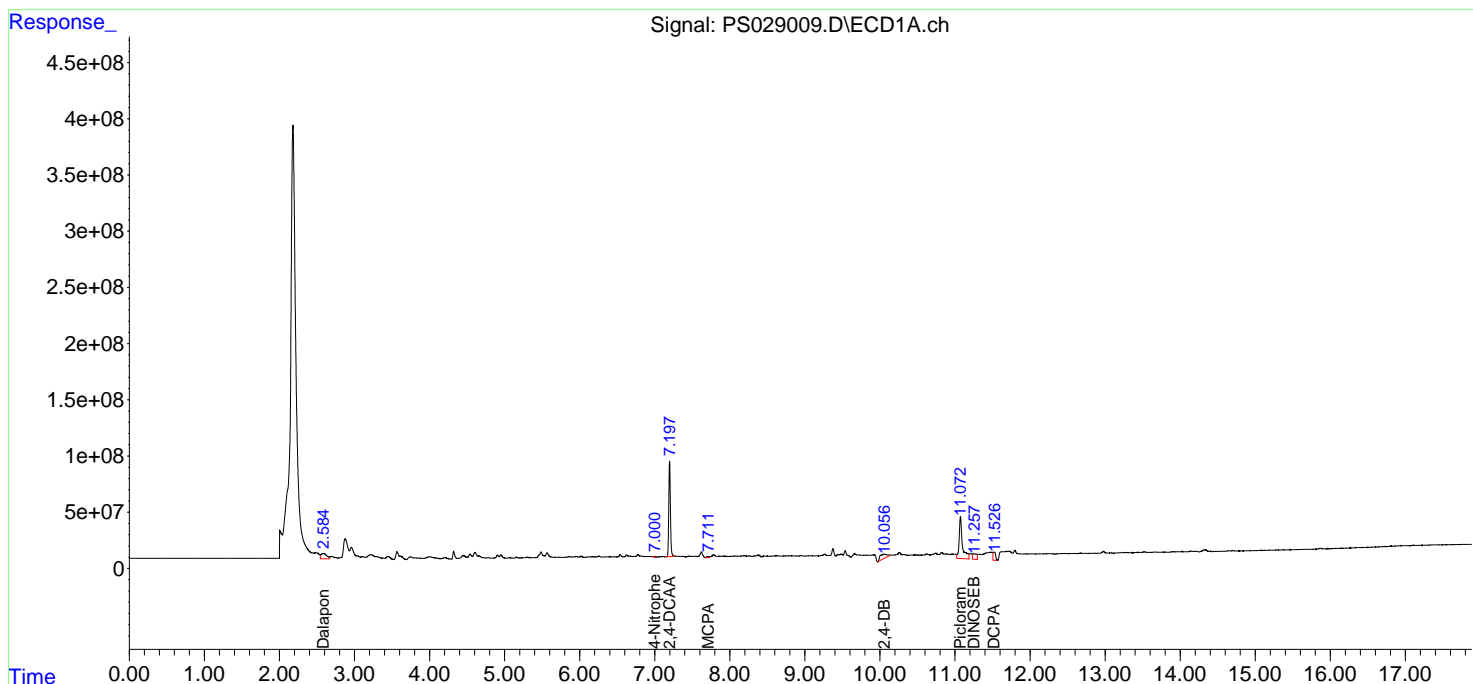
(f)=RT Delta > 1/2 Window (#)=Amounts differ by > 25% (m)=manual int.

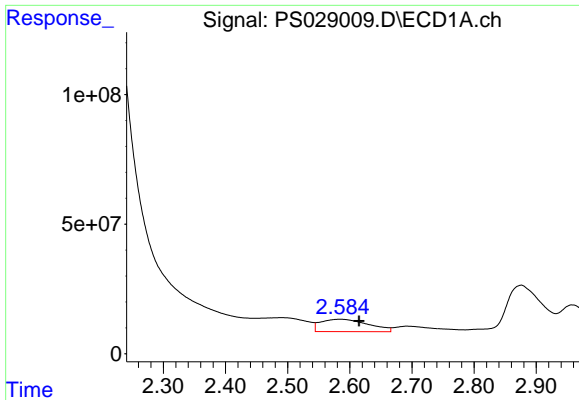
Data Path : Z:\pestpcbsrv\HPCHEM1\ECD_S\Data\PS013125\
 Data File : PS029009.D
 Signal(s) : Signal #1: ECD1A.ch Signal #2: ECD2B.ch
 Acq On : 31 Jan 2025 16:44
 Operator : AR\AJ
 Sample : PB166416BL
 Misc :
 ALS Vial : 4 Sample Multiplier: 1

Instrument :
 ECD_S
 ClientSampleId :

Integration File signal 1: autoint1.e
 Integration File signal 2: autoint2.e
 Quant Time: Feb 01 00:26:11 2025
 Quant Method : Z:\pestpcbsrv\HPCHEM1\ECD_S\Method\PS011425.M
 Quant Title : 8080.M
 QLast Update : Tue Jan 14 12:25:39 2025
 Response via : Initial Calibration
 Integrator: ChemStation

Volume Inj. : 1 µl
 Signal #1 Phase : ZB-MR1 Signal #2 Phase: ZB-MR2
 Signal #1 Info : 30M x 0.32mm x0.5 Signal #2 Info : 30M x 0.32mm x 0.25µm

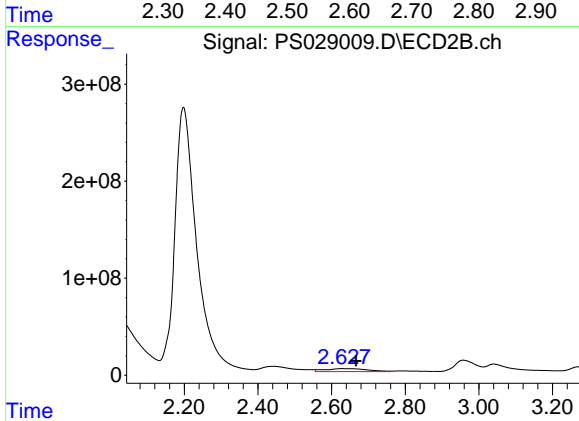




#1 Dalapon

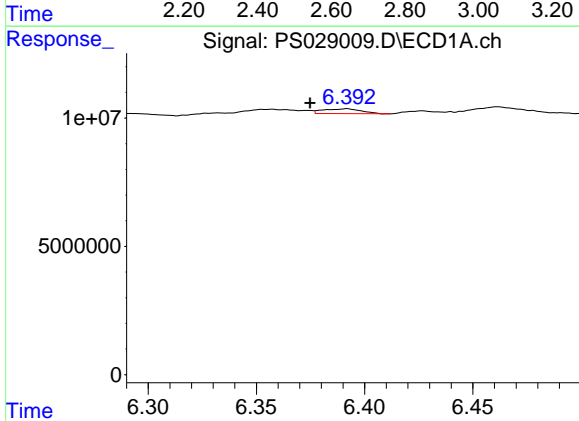
R.T.: 2.585 min
 Delta R.T.: -0.030 min
 Response: 252506412
 Conc: 84.68 ng/ml

Instrument :
 ECD_S
 ClientSampleId :



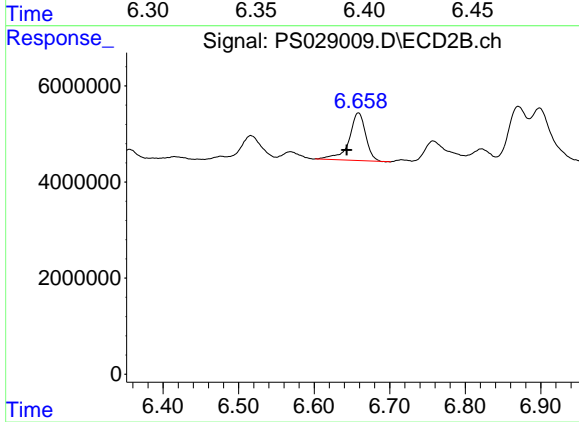
#1 Dalapon

R.T.: 2.628 min
 Delta R.T.: -0.039 min
 Response: 240739057
 Conc: 118.00 ng/ml



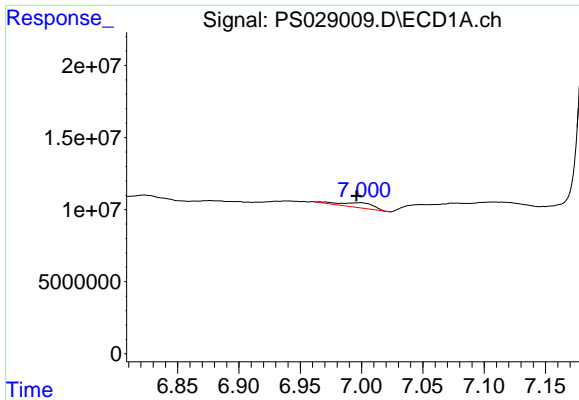
#2 3,5-DICHLOROBENZOIC ACID

R.T.: 6.391 min
 Delta R.T.: 0.016 min
 Response: 2275006
 Conc: N.D.



#2 3,5-DICHLOROBENZOIC ACID

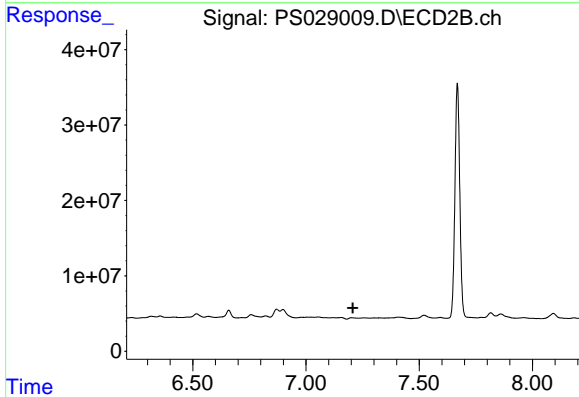
R.T.: 6.659 min
 Delta R.T.: 0.016 min
 Response: 15113044
 Conc: 9.14 ng/ml



#3 4-Nitrophenol

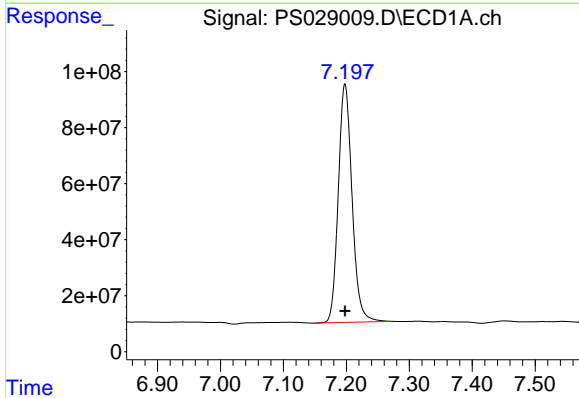
R.T.: 6.998 min
 Delta R.T.: 0.002 min
 Response: 6311075
 Conc: 3.56 ng/ml

Instrument :
 ECD_S
 ClientSampleId :



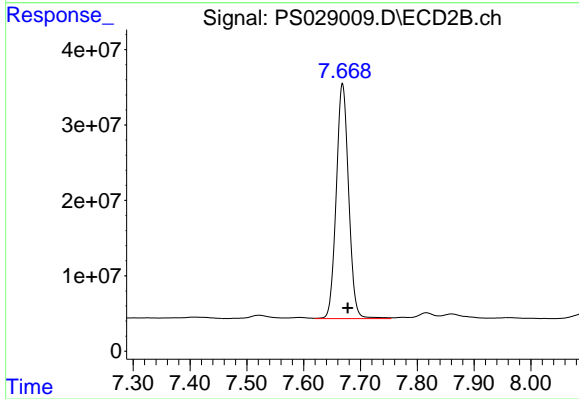
#3 4-Nitrophenol

R.T.: 7.202 min
 Delta R.T.: -0.005 min
 Response: -1707215
 Conc: N.D.



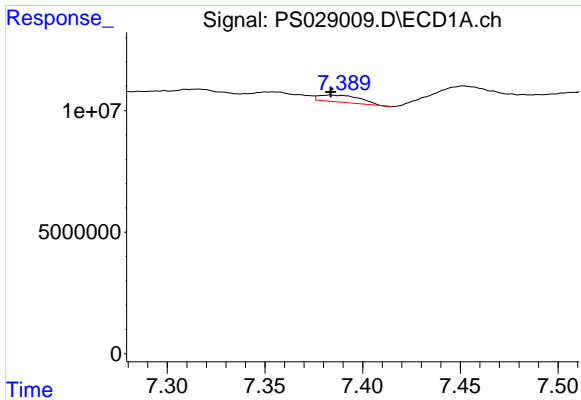
#4 2,4-DCAA

R.T.: 7.198 min
 Delta R.T.: 0.000 min
 Response: 1293169791
 Conc: 464.50 ng/ml



#4 2,4-DCAA

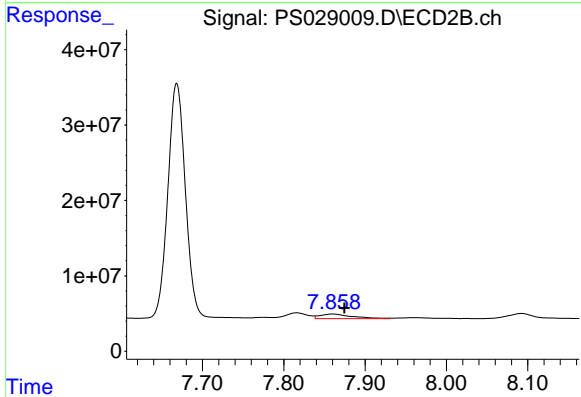
R.T.: 7.668 min
 Delta R.T.: -0.009 min
 Response: 471820261
 Conc: 422.85 ng/ml



#5 DICAMBA

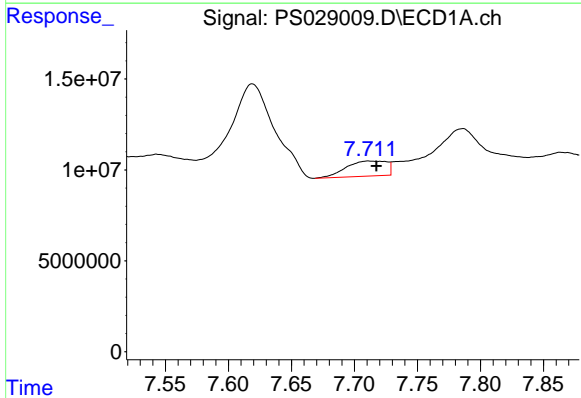
R.T.: 7.384 min
 Delta R.T.: 0.000 min
 Response: 4168085
 Conc: N.D.

Instrument :
 ECD_S
 ClientSampleId :



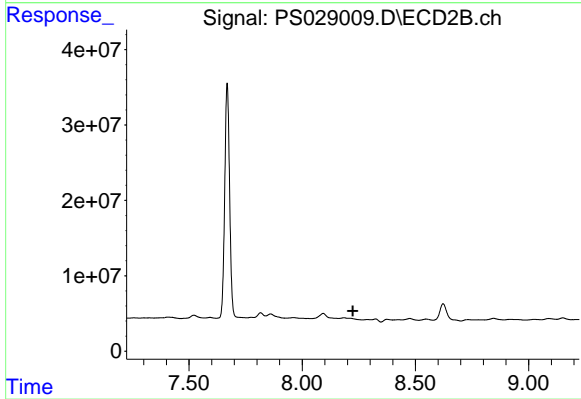
#5 DICAMBA

R.T.: 7.860 min
 Delta R.T.: -0.015 min
 Response: 16685049
 Conc: 3.00 ng/ml



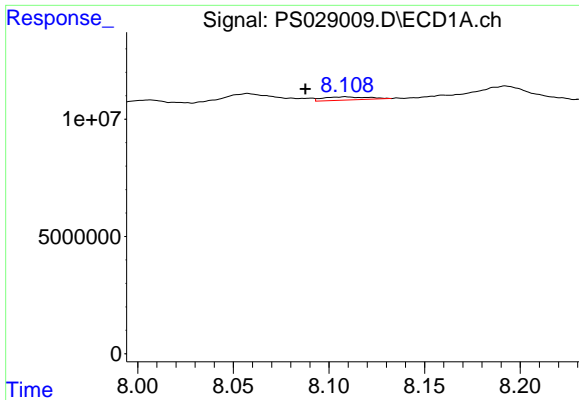
#7 MCPA

R.T.: 7.712 min
 Delta R.T.: -0.005 min
 Response: 18590742
 Conc: 1.89 ug/ml



#7 MCPA

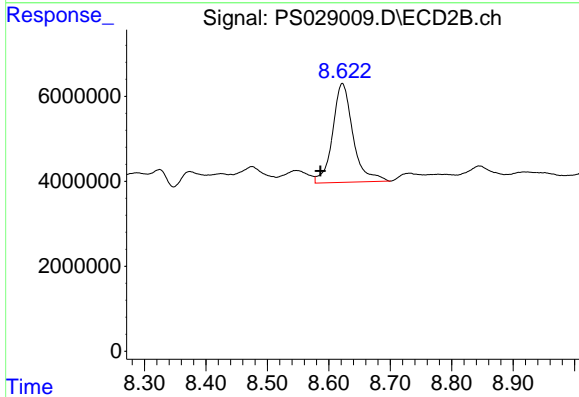
R.T.: 0.000 min
 Exp R.T.: 8.223 min
 Response: 0
 Conc: N.D.



#8 DICHLORPROP

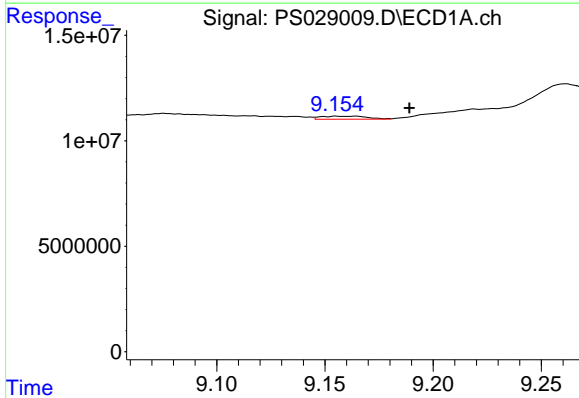
R.T.: 8.108 min
 Delta R.T.: 0.021 min
 Response: 2134789
 Conc: N.D.

Instrument :
 ECD_S
 ClientSampleId :



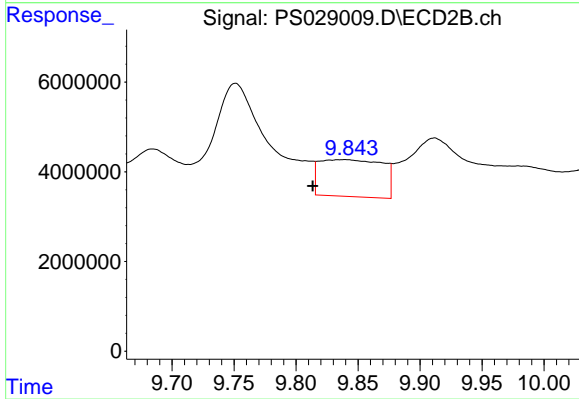
#8 DICHLORPROP

R.T.: 8.622 min
 Delta R.T.: 0.036 min
 Response: 53615943
 Conc: 38.14 ng/ml



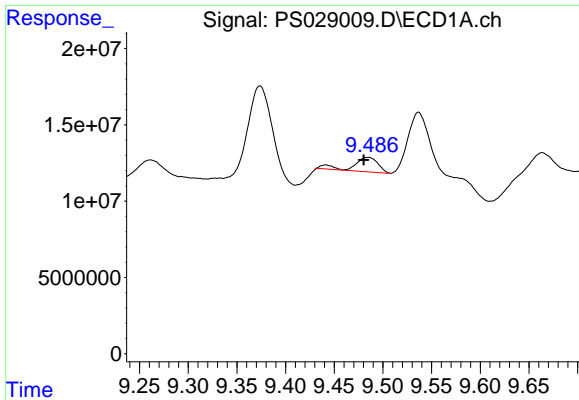
#11 2,4,5-TP (SILVEX)

R.T.: 9.159 min
 Delta R.T.: -0.030 min
 Response: 2173114
 Conc: N.D.



#11 2,4,5-TP (SILVEX)

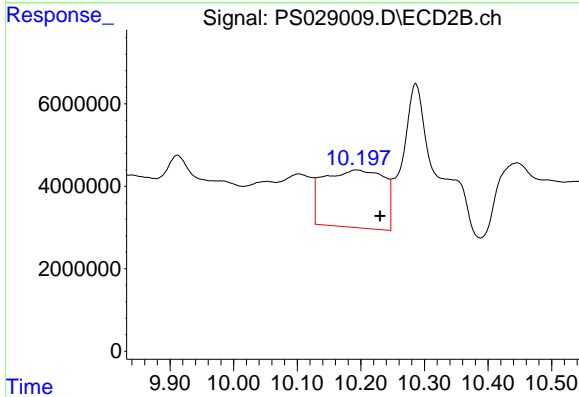
R.T.: 9.839 min
 Delta R.T.: 0.025 min
 Response: 29075151
 Conc: 3.09 ng/ml



#12 2,4,5-T

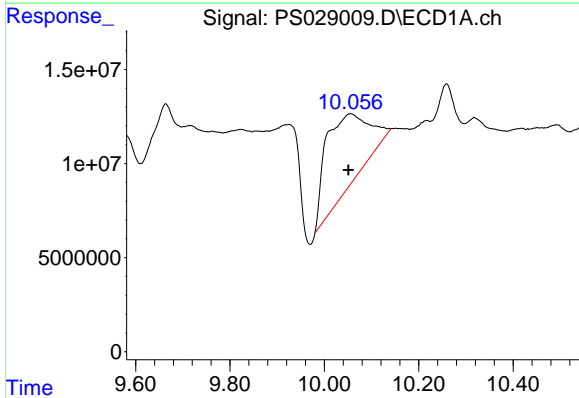
R.T.: 9.485 min
 Delta R.T.: 0.005 min
 Response: 15531171
 Conc: N.D.

Instrument :
 ECD_S
 ClientSampleId :



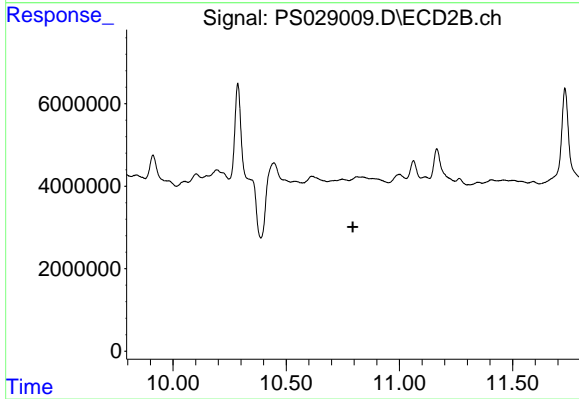
#12 2,4,5-T

R.T.: 10.193 min
 Delta R.T.: -0.037 min
 Response: 91727842
 Conc: 10.18 ng/ml



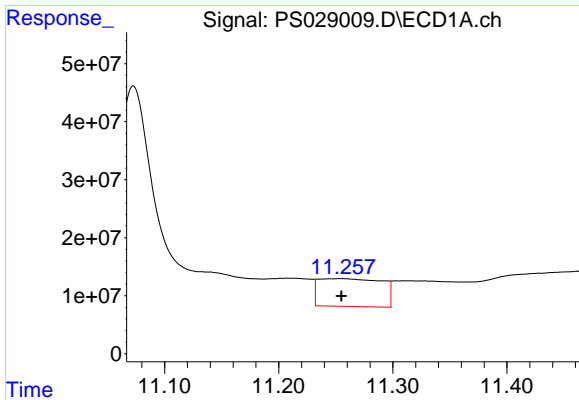
#13 2,4-DB

R.T.: 10.055 min
 Delta R.T.: 0.005 min
 Response: 247732124
 Conc: 69.84 ng/ml



#13 2,4-DB

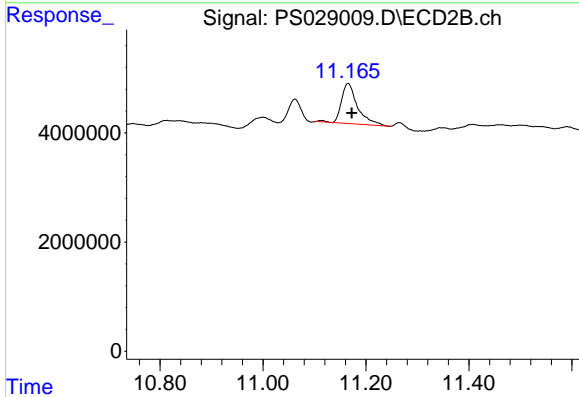
R.T.: 0.000 min
 Exp R.T. : 10.795 min
 Response: 0
 Conc: N.D.



#14 DINOSEB

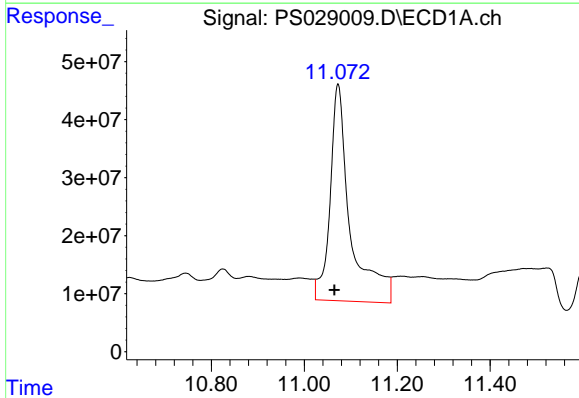
R.T.: 11.254 min
 Delta R.T.: 0.000 min
 Response: 184220822
 Conc: 11.13 ng/ml

Instrument :
 ECD_S
 ClientSampleId :



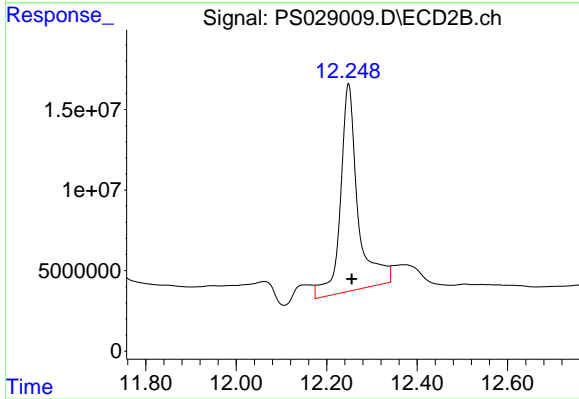
#14 DINOSEB

R.T.: 11.165 min
 Delta R.T.: -0.007 min
 Response: 15786334
 Conc: 2.46 ng/ml



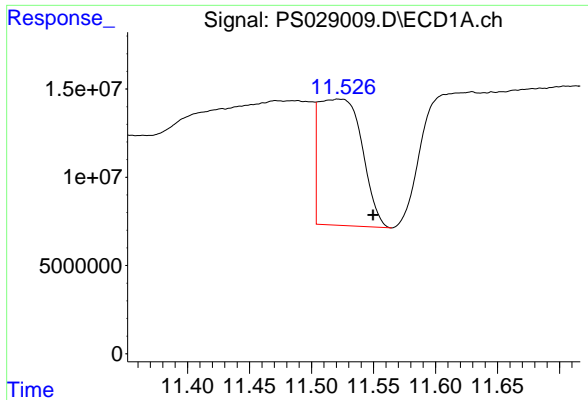
#15 Picloram

R.T.: 11.073 min
 Delta R.T.: 0.008 min
 Response: 1123009708
 Conc: 35.59 ng/ml



#15 Picloram

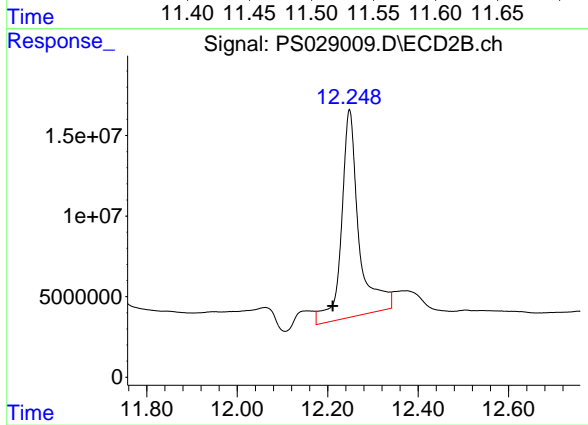
R.T.: 12.248 min
 Delta R.T.: -0.007 min
 Response: 344511142
 Conc: 25.67 ng/ml



#16 DCPA

R.T.: 11.522 min
 Delta R.T.: -0.028 min
 Response: 172188748
 Conc: 6.00 ng/ml

Instrument :
 ECD_S
 ClientSampleId :



#16 DCPA

R.T.: 12.248 min
 Delta R.T.: 0.037 min
 Response: 344511142
 Conc: 30.35 ng/ml