

Data Path : Z:\pestpcbsrv\HPCHEM1\ECD\_S\Data\PS013125\  
 Data File : PS029026.D  
 Signal(s) : Signal #1: ECD1A.ch Signal #2: ECD2B.ch  
 Acq On : 01 Feb 2025 00:20  
 Operator : AR\AJ  
 Sample : Q1215--04MD  
 Misc :  
 ALS Vial : 19 Sample Multiplier: 1

Instrument :  
 ECD\_S  
 ClientSampleId :

Integration File signal 1: autoint1.e  
 Integration File signal 2: autoint2.e  
 Quant Time: Feb 01 05:17:11 2025  
 Quant Method : Z:\pestpcbsrv\HPCHEM1\ECD\_S\Method\PS011425.M  
 Quant Title : 8080.M  
 QLast Update : Tue Jan 14 12:25:39 2025  
 Response via : Initial Calibration  
 Integrator: ChemStation

Volume Inj. : 1 µl  
 Signal #1 Phase : ZB-MR1 Signal #2 Phase: ZB-MR2  
 Signal #1 Info : 30M x 0.32mm x0.5 Signal #2 Info : 30M x 0.32mm x 0.25µm

	Compound	RT#1	RT#2	Resp#1	Resp#2	ng/ml	ng/ml
-----							
System Monitoring Compounds							
4) S	2,4-DCAA	7.195	7.672	1645.6E6	405.2E6	591.078	363.120 #
Target Compounds							
1) T	Dalapon	2.614	2.667	1758.0E6	1131.7E6	589.588	554.725
2) T	3,5-DICHL...	6.372	6.638	1912.1E6	708.2E6	478.402	428.523
3) T	4-Nitroph...	6.993	7.204	26757683	10589793	15.100	11.902
5) T	DICAMBA	7.380	7.868	5178.7E6	2380.7E6	436.600	427.496
6) T	MCPD	7.559	7.971	233.8E6	116.8E6	34.295	38.833
7) T	MCPA	7.708	8.211	407.9E6	193.4E6	41.404	45.526
8) T	DICHLORPROP	8.083	8.579	1447.3E6	595.9E6	456.754	423.943
9) T	2,4-D	8.311	8.905	1772.4E6	717.7E6	524.469	478.592
10) T	Pentachlo...	8.608	9.429	19939.8E6	8940.5E6	413.372	385.930
11) T	2,4,5-TP ...	9.184	9.806	9676.2E6	5982.5E6	505.743	635.130 #
12) T	2,4,5-T	9.475	10.222	9000.7E6	4133.8E6	468.862	458.847
13) T	2,4-DB	10.047	10.786	1248.2E6	387.6E6	351.860	389.218
14) T	DINOSEB	11.248	11.164	4730.8E6	1689.0E6	285.895	263.193
15) T	Picloram	11.058	12.245	12532.2E6	5135.6E6	397.189	382.695
16) T	DCPA	11.541	12.202	11253.8E6	5298.5E6	392.379	466.728
-----							

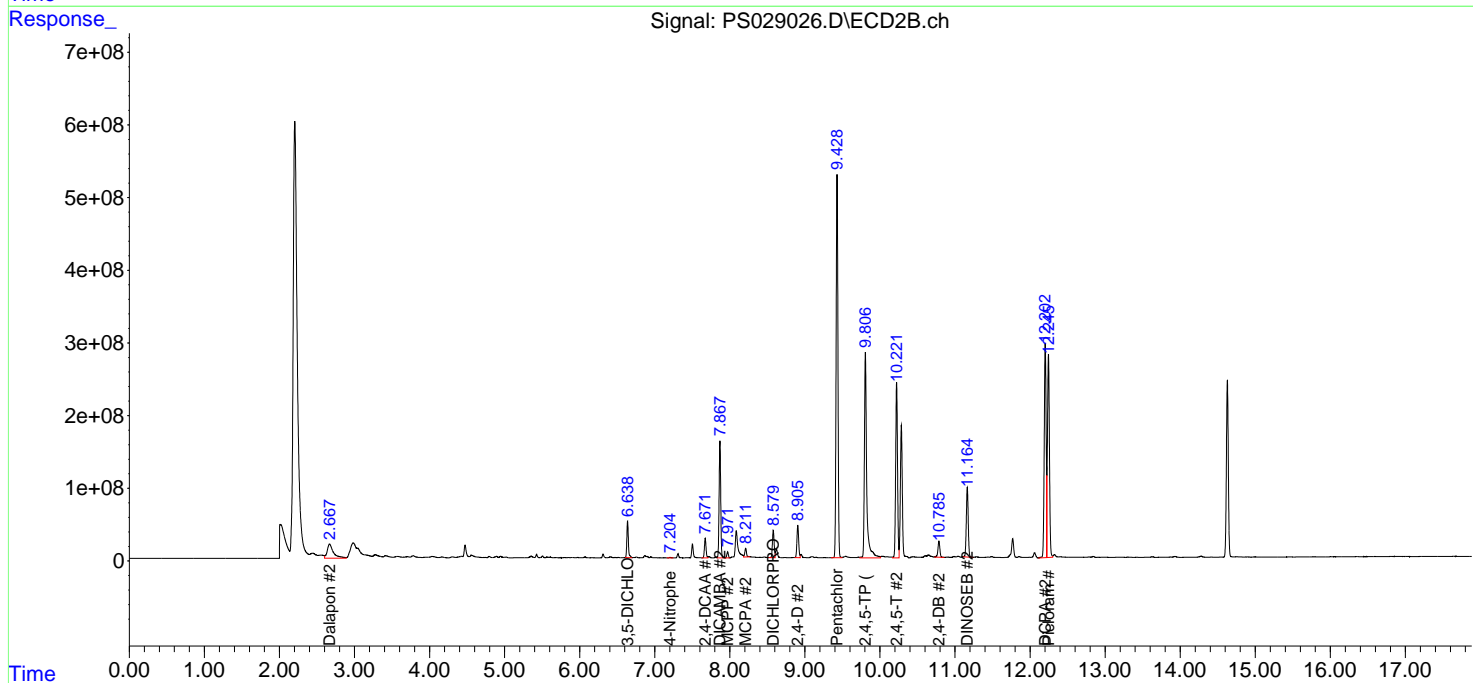
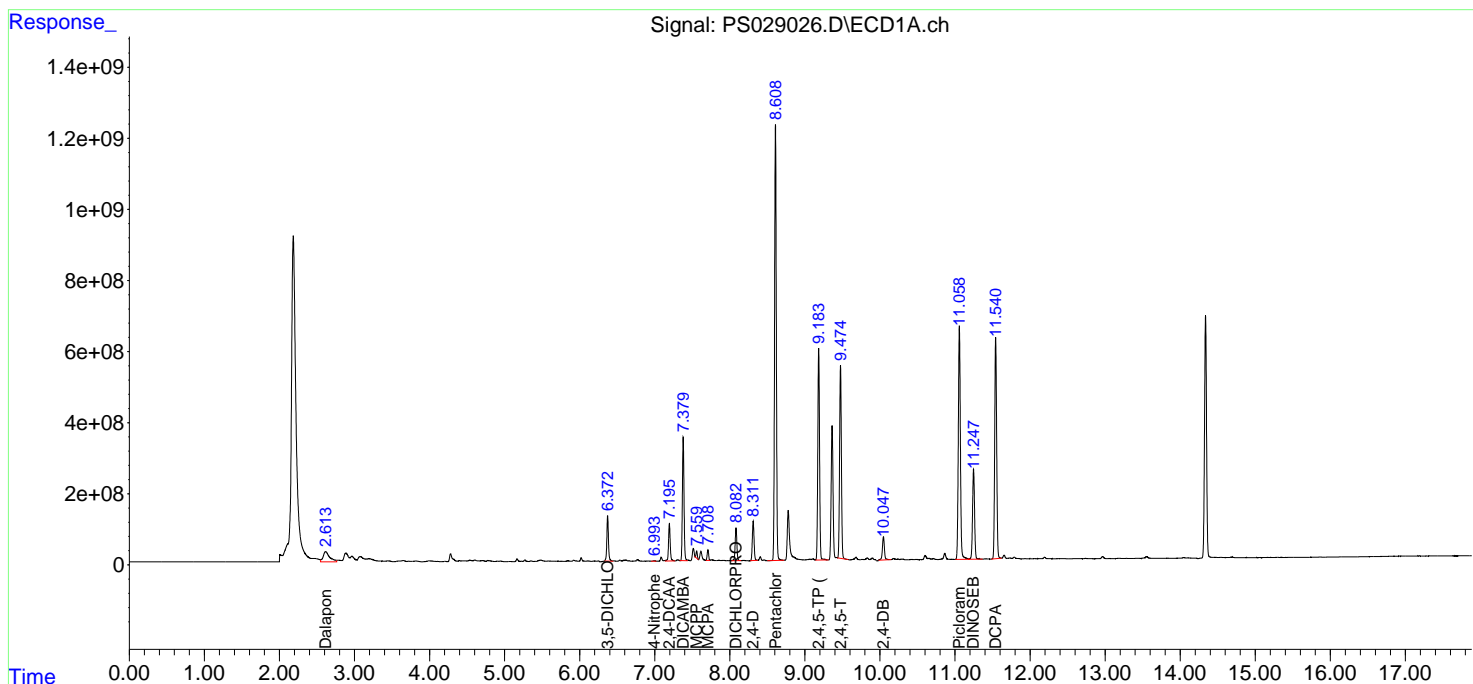
(f)=RT Delta > 1/2 Window (#)=Amounts differ by > 25% (m)=manual int.

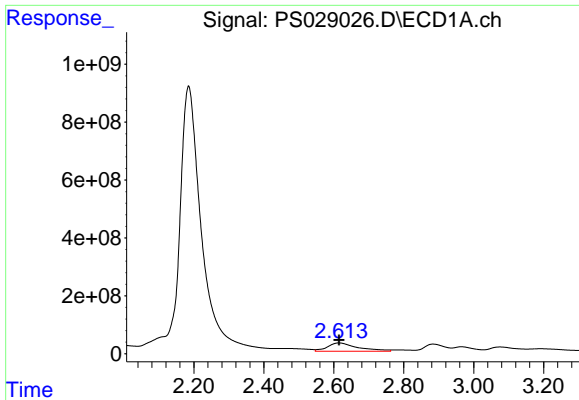
Data Path : Z:\pestpcbsrv\HPCHEM1\ECD\_S\Data\PS013125\  
 Data File : PS029026.D  
 Signal(s) : Signal #1: ECD1A.ch Signal #2: ECD2B.ch  
 Acq On : 01 Feb 2025 00:20  
 Operator : AR\AJ  
 Sample : Q1215--04MD  
 Misc :  
 ALS Vial : 19 Sample Multiplier: 1

Instrument :  
 ECD\_S  
 ClientSampleId :

Integration File signal 1: autoint1.e  
 Integration File signal 2: autoint2.e  
 Quant Time: Feb 01 05:17:11 2025  
 Quant Method : Z:\pestpcbsrv\HPCHEM1\ECD\_S\Method\PS011425.M  
 Quant Title : 8080.M  
 QLast Update : Tue Jan 14 12:25:39 2025  
 Response via : Initial Calibration  
 Integrator: ChemStation

Volume Inj. : 1 µl  
 Signal #1 Phase : ZB-MR1 Signal #2 Phase: ZB-MR2  
 Signal #1 Info : 30M x 0.32mm x0.5 Signal #2 Info : 30M x 0.32mm x 0.25µm

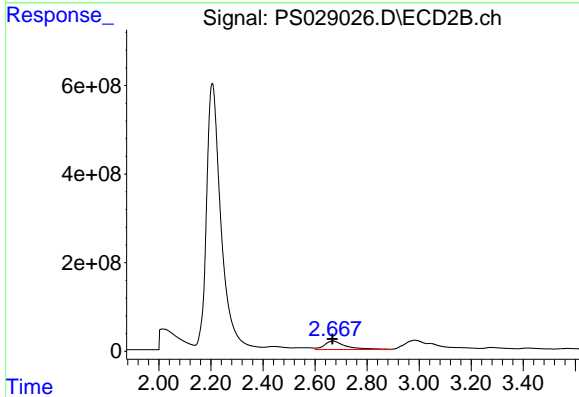




#1 Dalapon

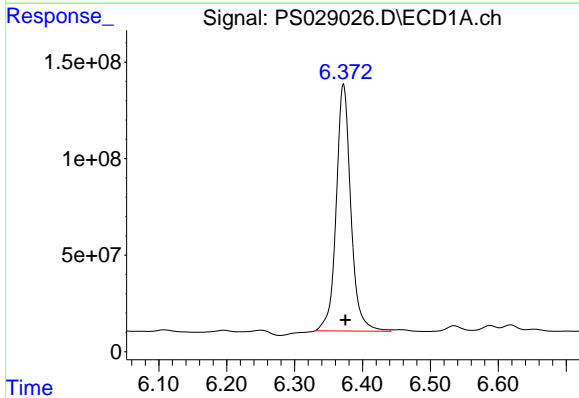
R.T.: 2.614 min  
 Delta R.T.: 0.000 min  
 Response: 1757998784  
 Conc: 589.59 ng/ml

Instrument :  
 ECD\_S  
 ClientSampleId :



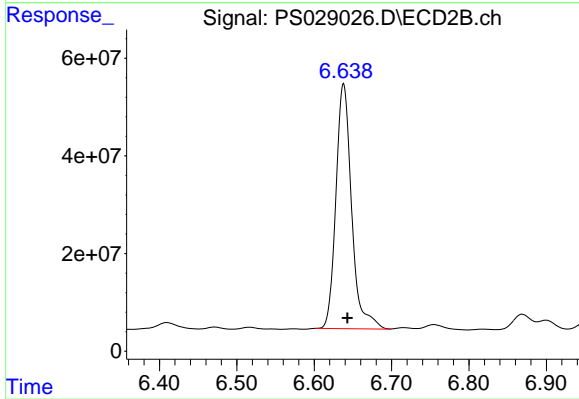
#1 Dalapon

R.T.: 2.667 min  
 Delta R.T.: 0.000 min  
 Response: 1131721008  
 Conc: 554.73 ng/ml



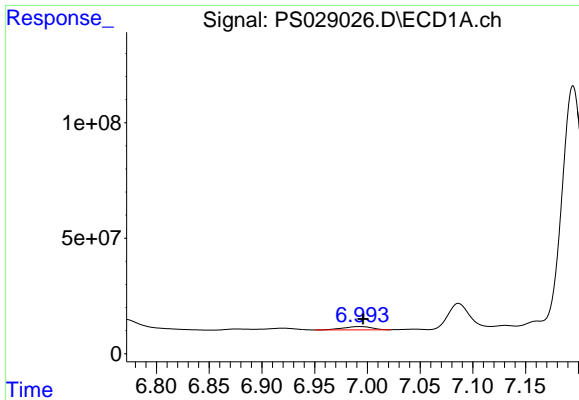
#2 3,5-DICHLOROBENZOIC ACID

R.T.: 6.372 min  
 Delta R.T.: -0.003 min  
 Response: 1912099971  
 Conc: 478.40 ng/ml



#2 3,5-DICHLOROBENZOIC ACID

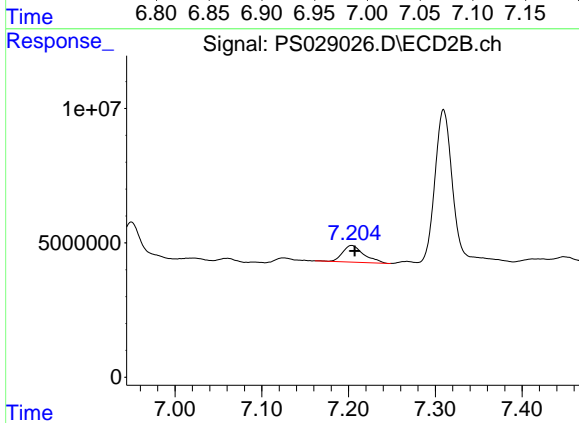
R.T.: 6.638 min  
 Delta R.T.: -0.005 min  
 Response: 708186511  
 Conc: 428.52 ng/ml



#3 4-Nitrophenol

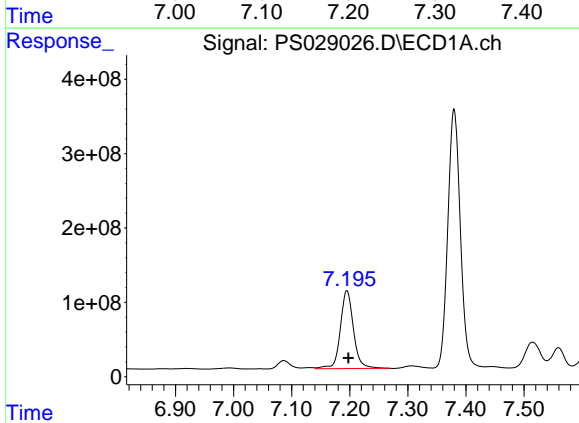
R.T.: 6.993 min  
 Delta R.T.: -0.003 min  
 Response: 26757683  
 Conc: 15.10 ng/ml

Instrument :  
 ECD\_S  
 ClientSampleId :



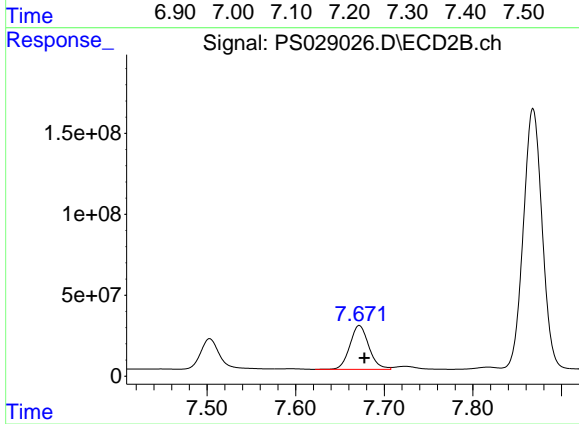
#3 4-Nitrophenol

R.T.: 7.204 min  
 Delta R.T.: -0.003 min  
 Response: 10589793  
 Conc: 11.90 ng/ml



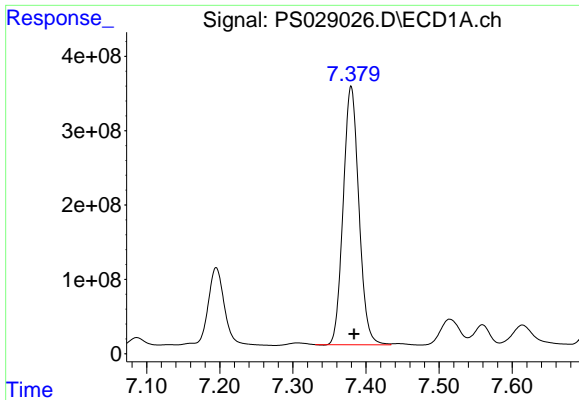
#4 2,4-DCAA

R.T.: 7.195 min  
 Delta R.T.: -0.003 min  
 Response: 1645568690  
 Conc: 591.08 ng/ml



#4 2,4-DCAA

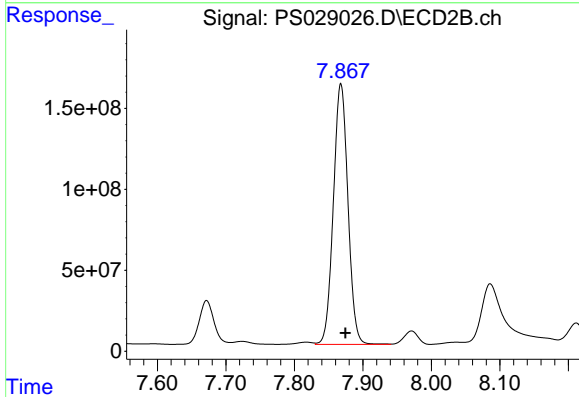
R.T.: 7.672 min  
 Delta R.T.: -0.006 min  
 Response: 405174152  
 Conc: 363.12 ng/ml



#5 DICAMBA

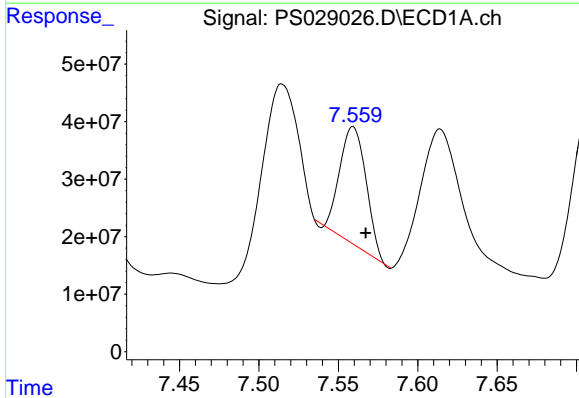
R.T.: 7.380 min  
 Delta R.T.: -0.004 min  
 Response: 5178703093  
 Conc: 436.60 ng/ml

Instrument :  
 ECD\_S  
 ClientSampleId :



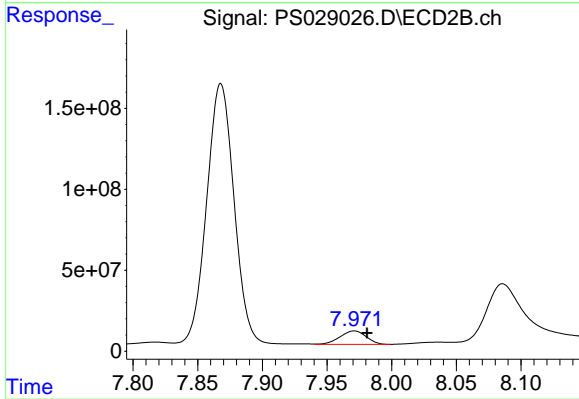
#5 DICAMBA

R.T.: 7.868 min  
 Delta R.T.: -0.007 min  
 Response: 2380739778  
 Conc: 427.50 ng/ml



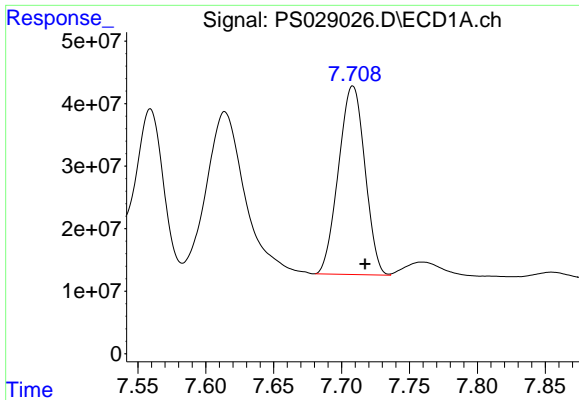
#6 MCPP

R.T.: 7.559 min  
 Delta R.T.: -0.008 min  
 Response: 233763140  
 Conc: 34.29 ug/ml



#6 MCPP

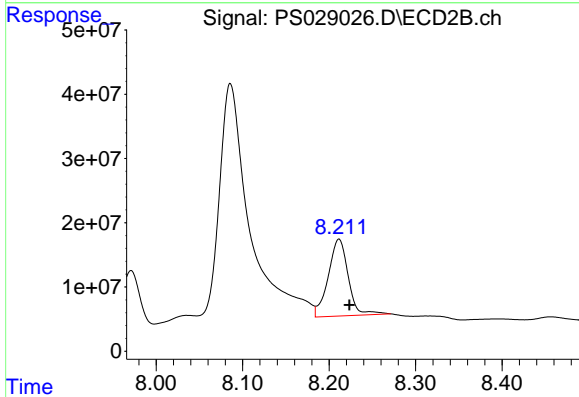
R.T.: 7.971 min  
 Delta R.T.: -0.010 min  
 Response: 116808638  
 Conc: 38.83 ug/ml



#7 MCPA

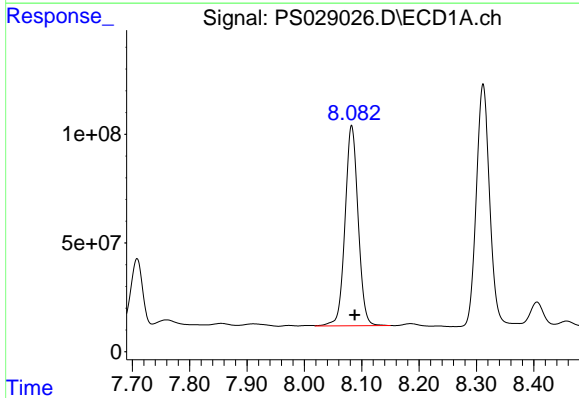
R.T.: 7.708 min  
 Delta R.T.: -0.009 min  
 Response: 407868901  
 Conc: 41.40 ug/ml

Instrument :  
 ECD\_S  
 ClientSampleId :



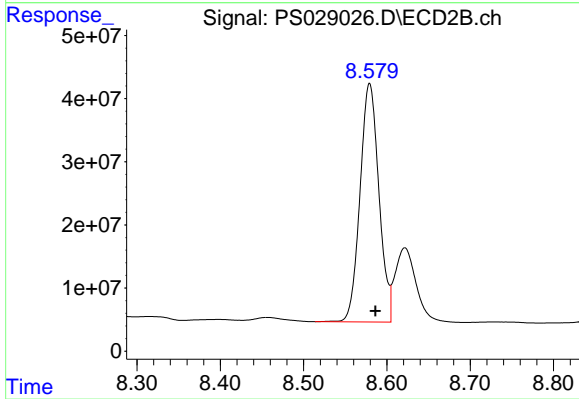
#7 MCPA

R.T.: 8.211 min  
 Delta R.T.: -0.012 min  
 Response: 193367716  
 Conc: 45.53 ug/ml



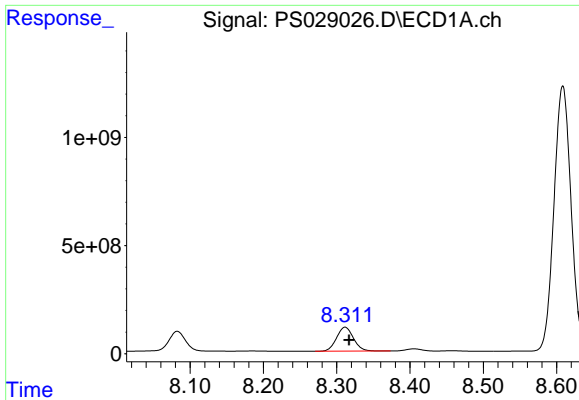
#8 DICHLORPROP

R.T.: 8.083 min  
 Delta R.T.: -0.005 min  
 Response: 1447257820  
 Conc: 456.75 ng/ml



#8 DICHLORPROP

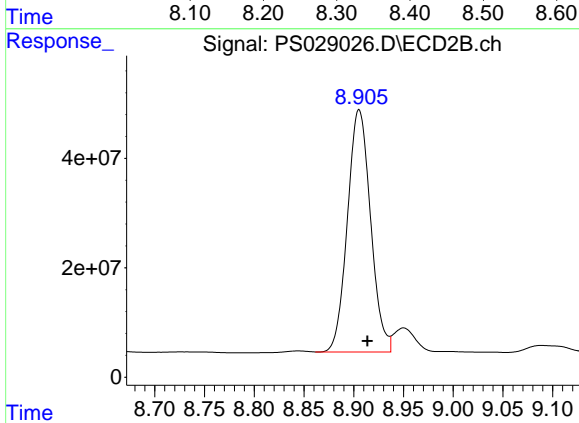
R.T.: 8.579 min  
 Delta R.T.: -0.007 min  
 Response: 595893517  
 Conc: 423.94 ng/ml



#9 2,4-D

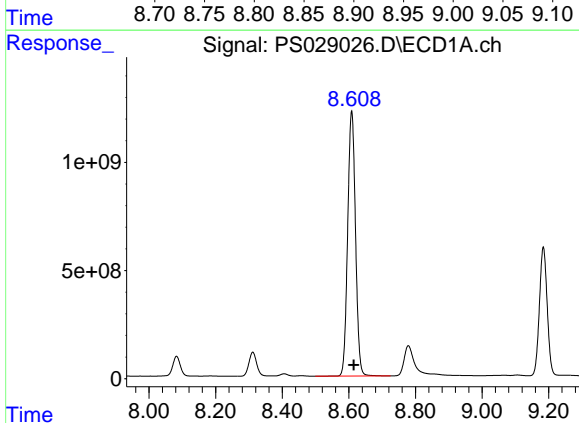
R.T.: 8.311 min  
 Delta R.T.: -0.005 min  
 Response: 1772418502  
 Conc: 524.47 ng/ml

Instrument :  
 ECD\_S  
 ClientSampleId :



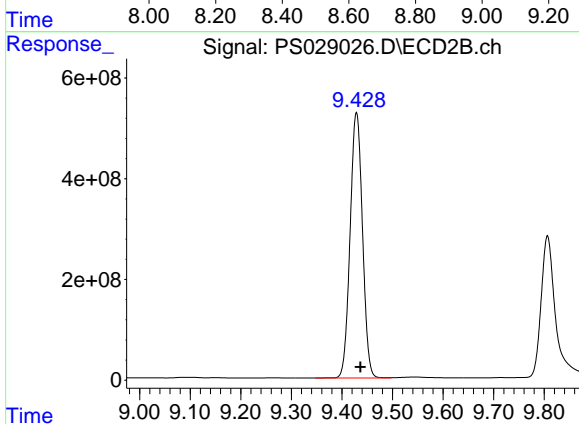
#9 2,4-D

R.T.: 8.905 min  
 Delta R.T.: -0.008 min  
 Response: 717656978  
 Conc: 478.59 ng/ml



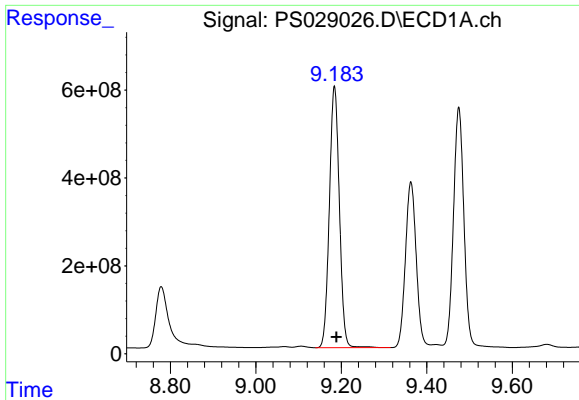
#10 Pentachlorophenol

R.T.: 8.608 min  
 Delta R.T.: -0.006 min  
 Response: 19939847238  
 Conc: 413.37 ng/ml



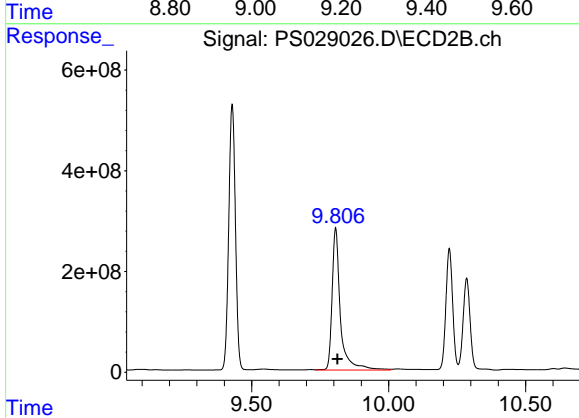
#10 Pentachlorophenol

R.T.: 9.429 min  
 Delta R.T.: -0.008 min  
 Response: 8940454460  
 Conc: 385.93 ng/ml

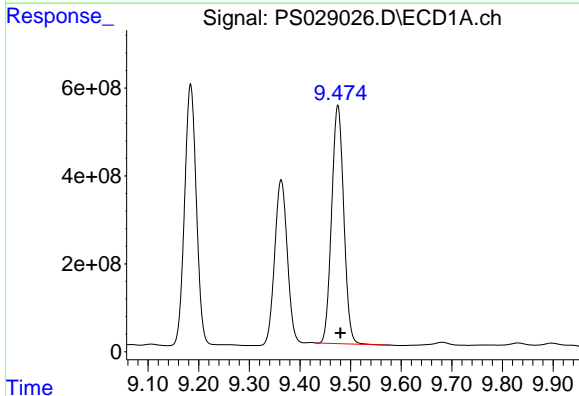


#11 2,4,5-TP (SILVEX)  
 R.T.: 9.184 min  
 Delta R.T.: -0.005 min  
 Response: 9676217682  
 Conc: 505.74 ng/ml

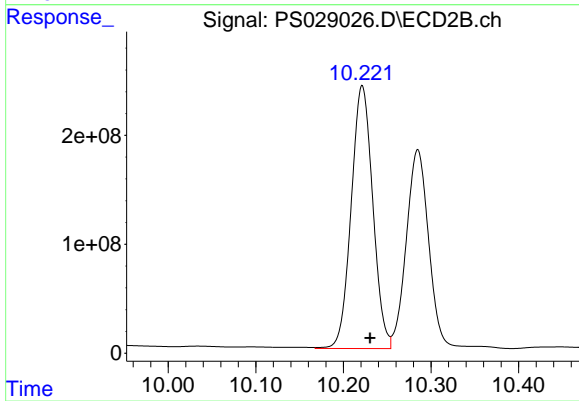
Instrument :  
 ECD\_S  
 ClientSampleId :



#11 2,4,5-TP (SILVEX)  
 R.T.: 9.806 min  
 Delta R.T.: -0.007 min  
 Response: 5982540276  
 Conc: 635.13 ng/ml

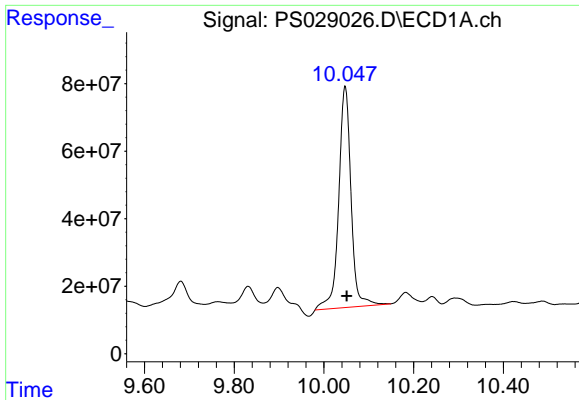


#12 2,4,5-T  
 R.T.: 9.475 min  
 Delta R.T.: -0.005 min  
 Response: 9000704007  
 Conc: 468.86 ng/ml



#12 2,4,5-T  
 R.T.: 10.222 min  
 Delta R.T.: -0.009 min  
 Response: 4133754227  
 Conc: 458.85 ng/ml

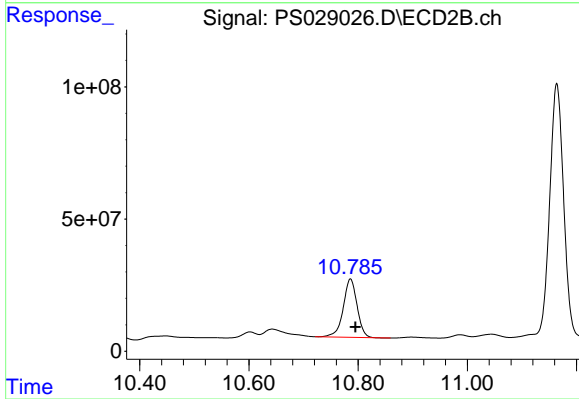




#13 2,4-DB

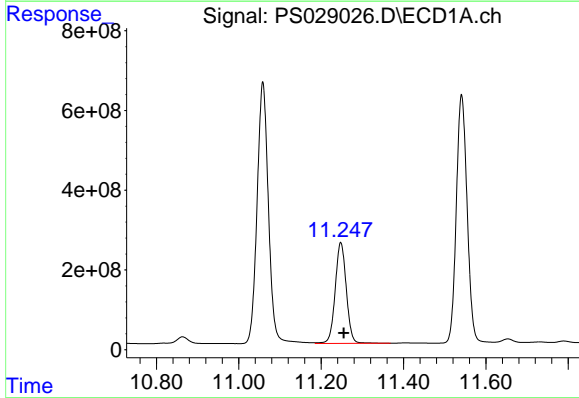
R.T.: 10.047 min  
Delta R.T.: -0.004 min  
Response: 1248172364  
Conc: 351.86 ng/ml

Instrument :  
ECD\_S  
ClientSampleId :



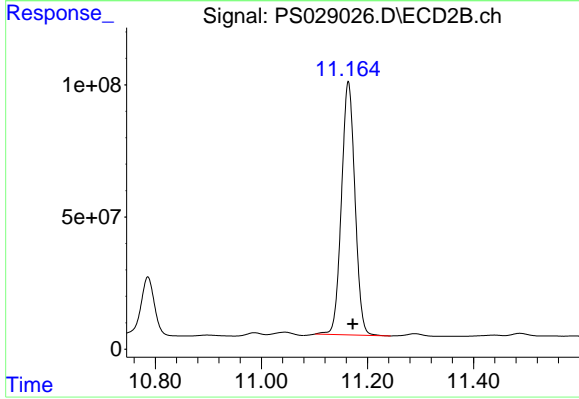
#13 2,4-DB

R.T.: 10.786 min  
Delta R.T.: -0.009 min  
Response: 387565827  
Conc: 389.22 ng/ml



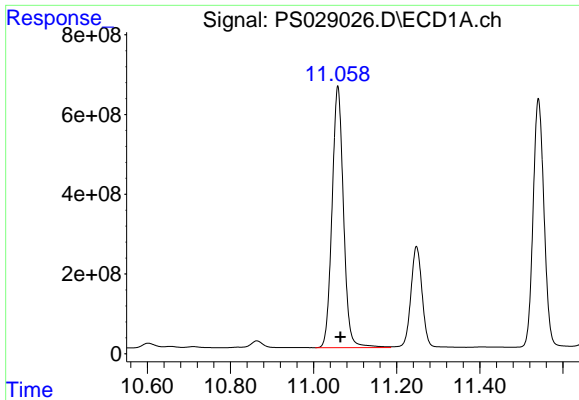
#14 DINOSEB

R.T.: 11.248 min  
Delta R.T.: -0.007 min  
Response: 4730790143  
Conc: 285.89 ng/ml



#14 DINOSEB

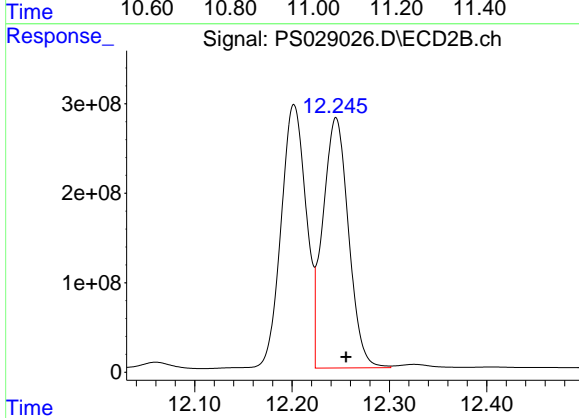
R.T.: 11.164 min  
Delta R.T.: -0.009 min  
Response: 1688995609  
Conc: 263.19 ng/ml



#15 Picloram

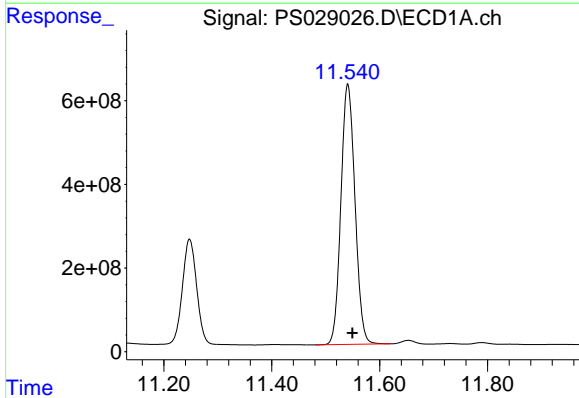
R.T.: 11.058 min  
 Delta R.T.: -0.006 min  
 Response: 12532155156  
 Conc: 397.19 ng/ml

Instrument :  
 ECD\_S  
 ClientSampleId :



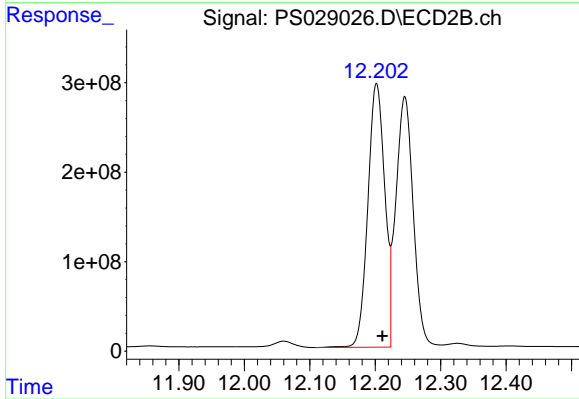
#15 Picloram

R.T.: 12.245 min  
 Delta R.T.: -0.011 min  
 Response: 5135641112  
 Conc: 382.70 ng/ml



#16 DCPA

R.T.: 11.541 min  
 Delta R.T.: -0.009 min  
 Response: 11253834570  
 Conc: 392.38 ng/ml



#16 DCPA

R.T.: 12.202 min  
 Delta R.T.: -0.009 min  
 Response: 5298456478  
 Conc: 466.73 ng/ml