

Data Path : Z:\pestpcbsrv\HPCHEM1\ECD\_S\Data\PS013125\  
 Data File : PS029033.D  
 Signal(s) : Signal #1: ECD1A.ch Signal #2: ECD2B.ch  
 Acq On : 01 Feb 2025 03:56  
 Operator : AR\AJ  
 Sample : Q1216-12  
 Misc :  
 ALS Vial : 24 Sample Multiplier: 1

Instrument :  
 ECD\_S  
 ClientSampleId :

Integration File signal 1: autoint1.e  
 Integration File signal 2: autoint2.e  
 Quant Time: Feb 03 00:57:24 2025  
 Quant Method : Z:\pestpcbsrv\HPCHEM1\ECD\_S\Method\PS011425.M  
 Quant Title : 8080.M  
 QLast Update : Tue Jan 14 12:25:39 2025  
 Response via : Initial Calibration  
 Integrator: ChemStation

Volume Inj. : 1 µl  
 Signal #1 Phase : ZB-MR2 Signal #2 Phase: ZB-MR2  
 Signal #1 Info : 30M x 0.32mm x0.5 Signal #2 Info : 30M x 0.32mm x 0.25µm

Compound	RT#1	RT#2	Resp#1	Resp#2	ng/ml	ng/ml
-----						
System Monitoring Compounds						
4) S 2,4-DCAA	7.195	7.672	1479.5E6	388.0E6	531.417	347.692 #
Target Compounds						
1) T Dalapon	2.588f	2.672	284.5E6	207.0E6	95.401	101.456
2) T 3,5-DICHL...	6.348f	6.639	68413775	10150998	17.117	6.142 #
3) T 4-Nitroph...	6.980	7.227	9753373	1081965	5.504	1.216 #
5) T DICAMBA	0.000	7.858	0	26443241	N.D.	4.748
6) T MCPP	7.612f	7.963	361.9E6	10218037	53.093	3.397 #
7) T MCPA	7.723	8.218	13104868	17422200	1.330	4.102 #
8) T DICHLORPROP	8.107	8.621f	16909207	164.0E6	5.337	116.682 #
9) T 2,4-D	8.319	0.000	1971974	0	<MDL	N.D. #
10) T Pentachlo...	8.609	9.431	36916899	15730614	<MDL	<MDL #
11) T 2,4,5-TP ...	9.189	9.836	5387229	36903525	<MDL	3.918 #
12) T 2,4,5-T	9.475	10.198f	-681373	54350923	N.D.	6.033
13) T 2,4-DB	10.031	10.814	114.7E6	-1561111	32.346	N.D. #
14) T DINOSEB	11.225f	11.167	292.4E6	2316537	17.669	<MDL #
15) T Picloram	11.062	12.248	549.7E6	168.7E6	17.422	12.572 #
16) T DCPA	11.518f	12.248f	373.5E6	168.7E6	13.022	14.862
-----						

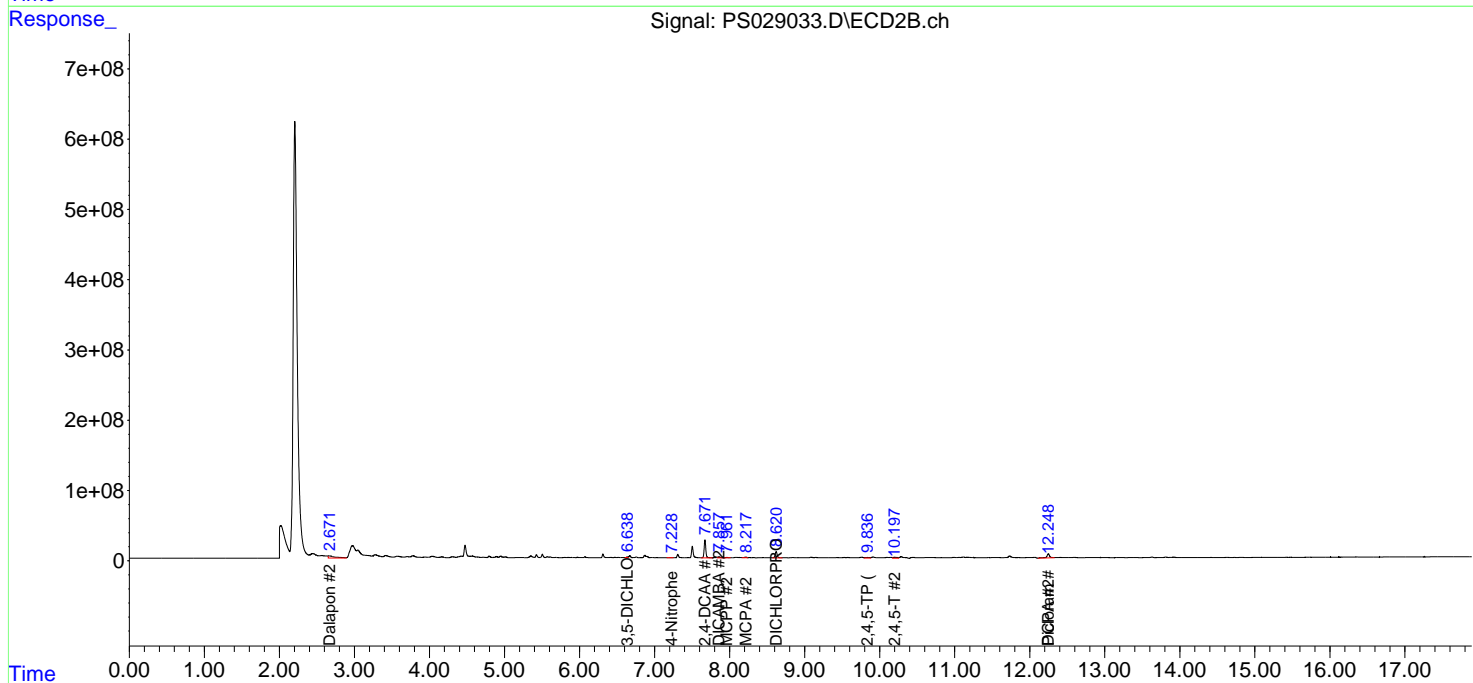
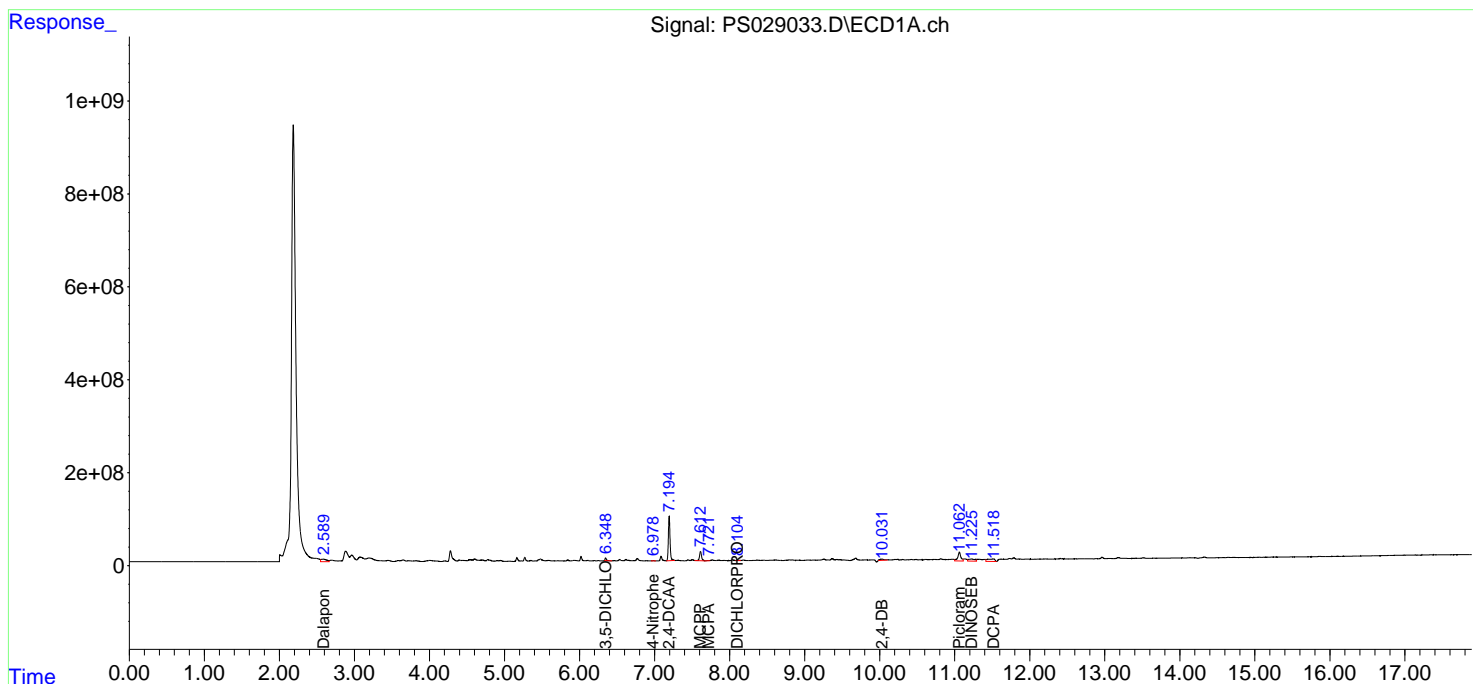
(f)=RT Delta > 1/2 Window (#)=Amounts differ by > 25% (m)=manual int.

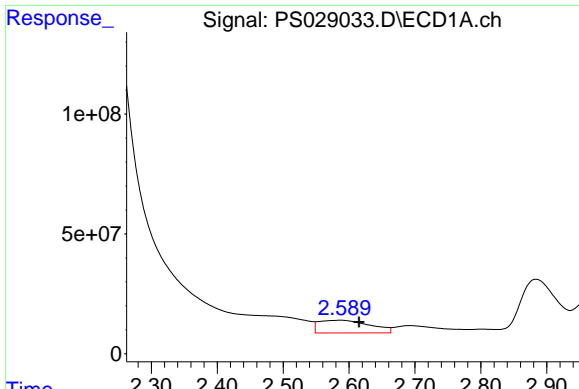
Data Path : Z:\pestpcbsrv\HPCHEM1\ECD\_S\Data\PS013125\  
 Data File : PS029033.D  
 Signal(s) : Signal #1: ECD1A.ch Signal #2: ECD2B.ch  
 Acq On : 01 Feb 2025 03:56  
 Operator : AR\AJ  
 Sample : Q1216-12  
 Misc :  
 ALS Vial : 24 Sample Multiplier: 1

Instrument :  
 ECD\_S  
 ClientSampleId :

Integration File signal 1: autoint1.e  
 Integration File signal 2: autoint2.e  
 Quant Time: Feb 03 00:57:24 2025  
 Quant Method : Z:\pestpcbsrv\HPCHEM1\ECD\_S\Method\PS011425.M  
 Quant Title : 8080.M  
 QLast Update : Tue Jan 14 12:25:39 2025  
 Response via : Initial Calibration  
 Integrator: ChemStation

Volume Inj. : 1 µl  
 Signal #1 Phase : ZB-MR1 Signal #2 Phase: ZB-MR2  
 Signal #1 Info : 30M x 0.32mm x0.5 Signal #2 Info : 30M x 0.32mm x 0.25µm

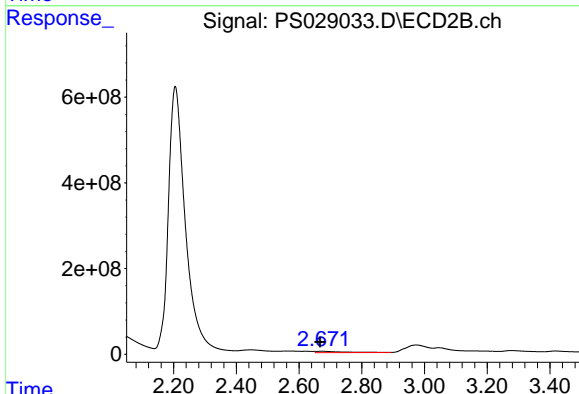




#1 Dalapon

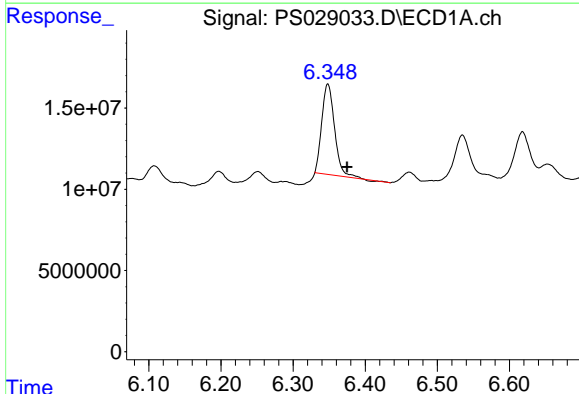
R.T.: 2.588 min  
 Delta R.T.: -0.027 min  
 Response: 284462545  
 Conc: 95.40 ng/ml

Instrument :  
 ECD\_S  
 ClientSampleId :



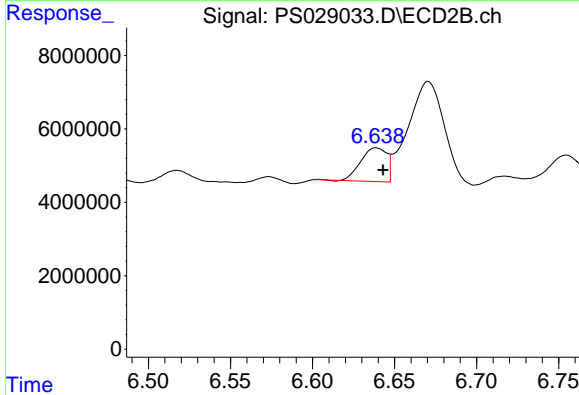
#1 Dalapon

R.T.: 2.672 min  
 Delta R.T.: 0.005 min  
 Response: 206984470  
 Conc: 101.46 ng/ml



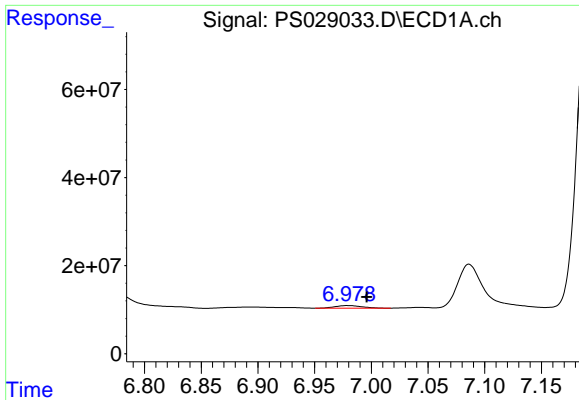
#2 3,5-DICHLOROBENZOIC ACID

R.T.: 6.348 min  
 Delta R.T.: -0.026 min  
 Response: 68413775  
 Conc: 17.12 ng/ml



#2 3,5-DICHLOROBENZOIC ACID

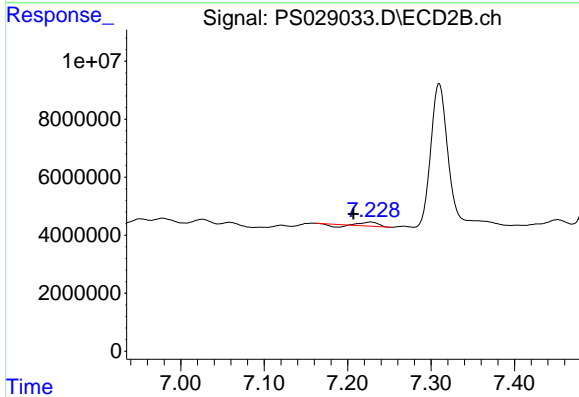
R.T.: 6.639 min  
 Delta R.T.: -0.004 min  
 Response: 10150998  
 Conc: 6.14 ng/ml



#3 4-Nitrophenol

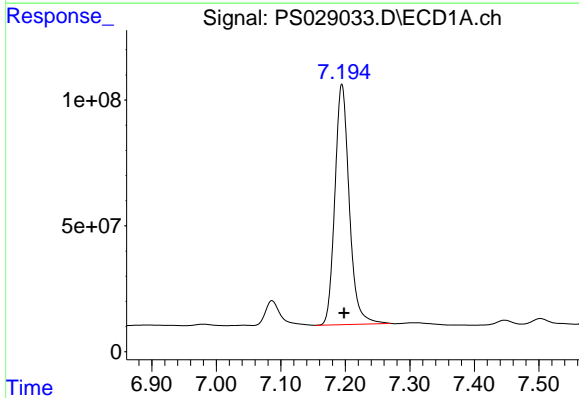
R.T.: 6.980 min  
Delta R.T.: -0.016 min  
Response: 9753373  
Conc: 5.50 ng/ml

Instrument :  
ECD\_S  
ClientSampleId :



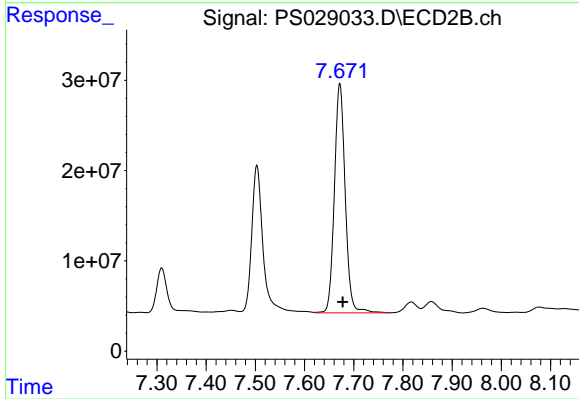
#3 4-Nitrophenol

R.T.: 7.227 min  
Delta R.T.: 0.020 min  
Response: 1081965  
Conc: 1.22 ng/ml



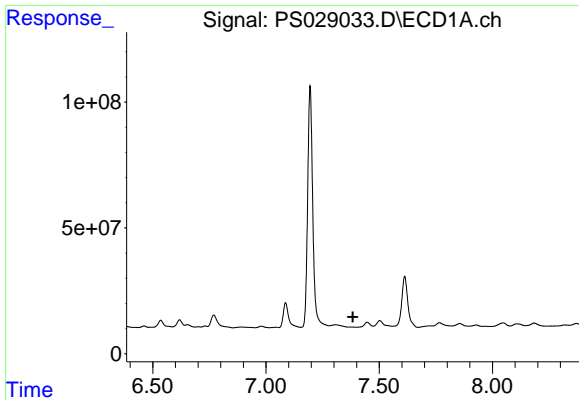
#4 2,4-DCAA

R.T.: 7.195 min  
Delta R.T.: -0.003 min  
Response: 1479472858  
Conc: 531.42 ng/ml



#4 2,4-DCAA

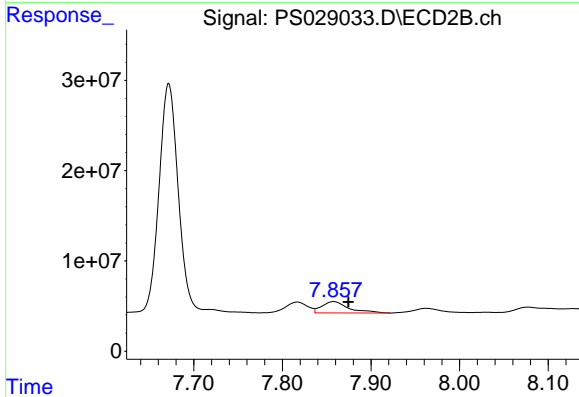
R.T.: 7.672 min  
Delta R.T.: -0.006 min  
Response: 387958817  
Conc: 347.69 ng/ml



#5 DICAMBA

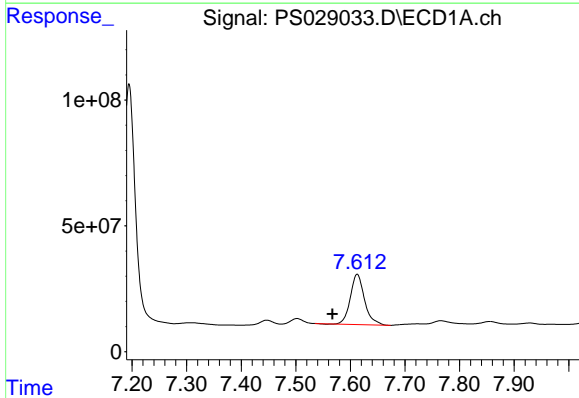
R.T.: 0.000 min  
 Exp R.T.: 7.384 min  
 Response: 0  
 Conc: N.D.

Instrument :  
 ECD\_S  
 ClientSampleId :



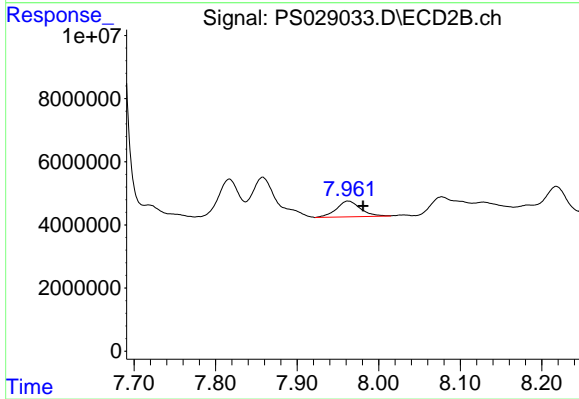
#5 DICAMBA

R.T.: 7.858 min  
 Delta R.T.: -0.017 min  
 Response: 26443241  
 Conc: 4.75 ng/ml



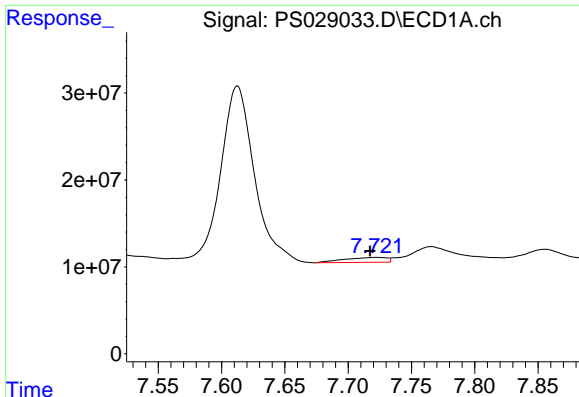
#6 MCPP

R.T.: 7.612 min  
 Delta R.T.: 0.045 min  
 Response: 361896685  
 Conc: 53.09 ug/ml



#6 MCPP

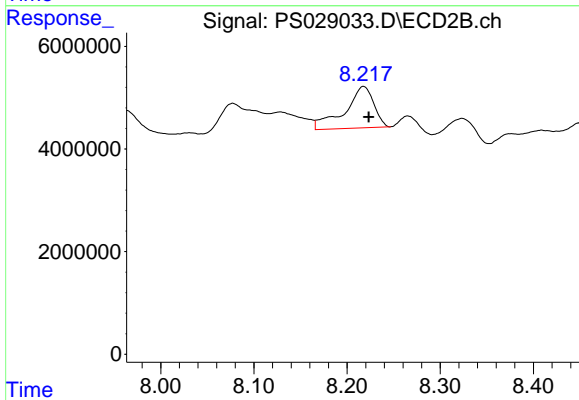
R.T.: 7.963 min  
 Delta R.T.: -0.018 min  
 Response: 10218037  
 Conc: 3.40 ug/ml



#7 MCPA

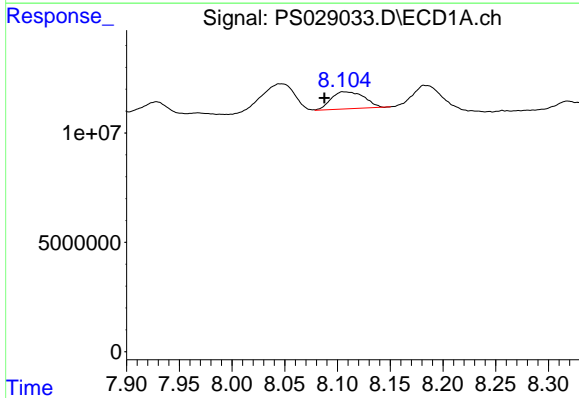
R.T.: 7.723 min  
 Delta R.T.: 0.005 min  
 Response: 13104868  
 Conc: 1.33 ug/ml

Instrument :  
 ECD\_S  
 ClientSampleId :



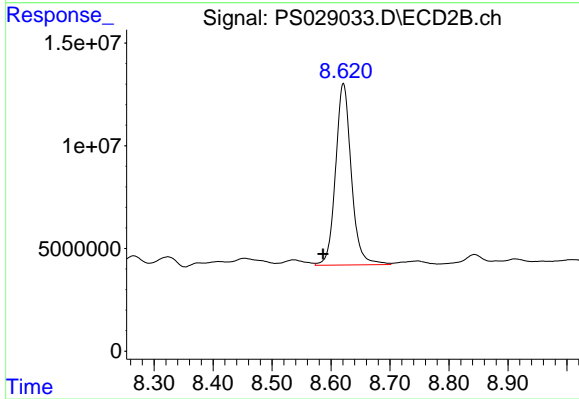
#7 MCPA

R.T.: 8.218 min  
 Delta R.T.: -0.006 min  
 Response: 17422200  
 Conc: 4.10 ug/ml



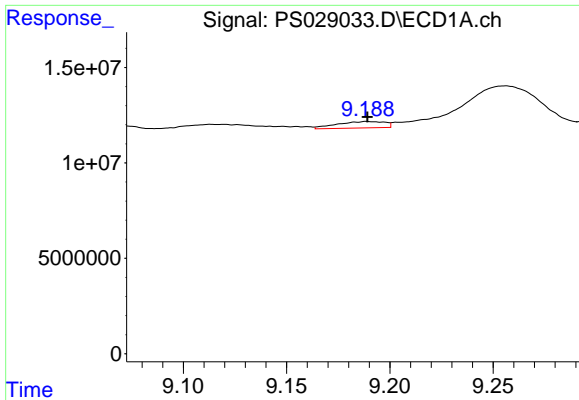
#8 DICHLORPROP

R.T.: 8.107 min  
 Delta R.T.: 0.020 min  
 Response: 16909207  
 Conc: 5.34 ng/ml



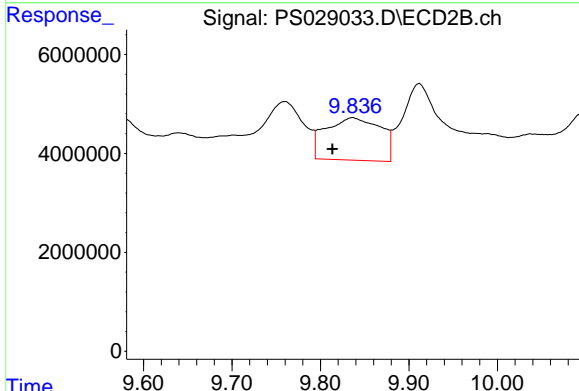
#8 DICHLORPROP

R.T.: 8.621 min  
 Delta R.T.: 0.035 min  
 Response: 164007581  
 Conc: 116.68 ng/ml

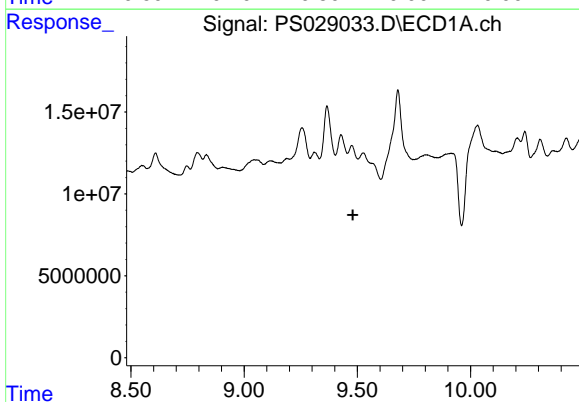


#11 2,4,5-TP (SILVEX)  
 R.T.: 9.189 min  
 Delta R.T.: 0.000 min  
 Response: 5387229  
 Conc: N.D.

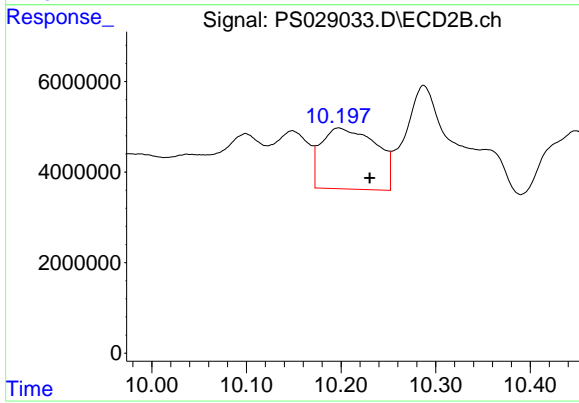
Instrument :  
 ECD\_S  
 ClientSampleId :



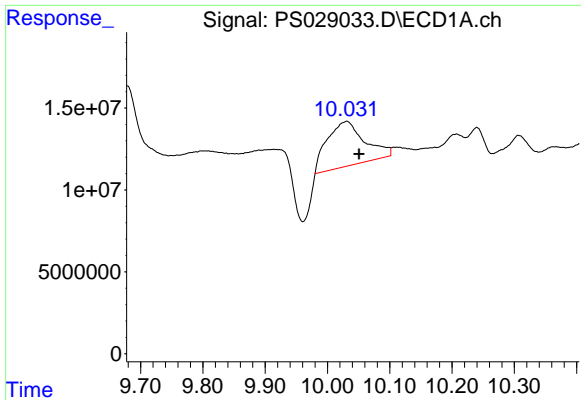
#11 2,4,5-TP (SILVEX)  
 R.T.: 9.836 min  
 Delta R.T.: 0.023 min  
 Response: 36903525  
 Conc: 3.92 ng/ml



#12 2,4,5-T  
 R.T.: 9.475 min  
 Delta R.T.: -0.005 min  
 Response: -681373  
 Conc: N.D.



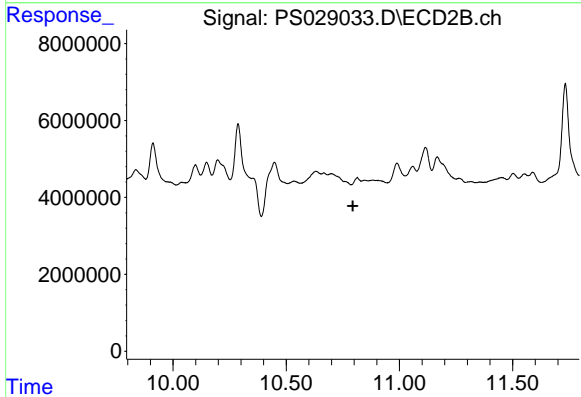
#12 2,4,5-T  
 R.T.: 10.198 min  
 Delta R.T.: -0.033 min  
 Response: 54350923  
 Conc: 6.03 ng/ml



#13 2,4-DB

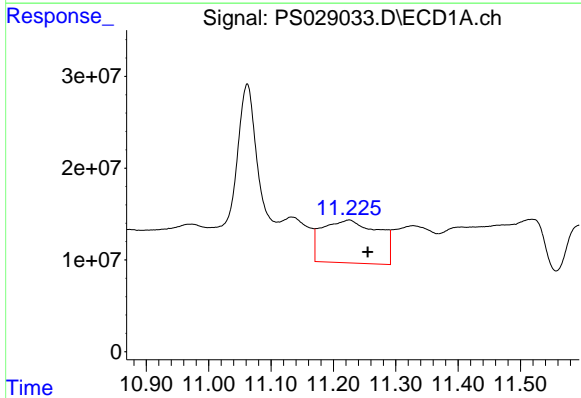
R.T.: 10.031 min  
 Delta R.T.: -0.020 min  
 Response: 114741123  
 Conc: 32.35 ng/ml

Instrument :  
 ECD\_S  
 ClientSampleId :



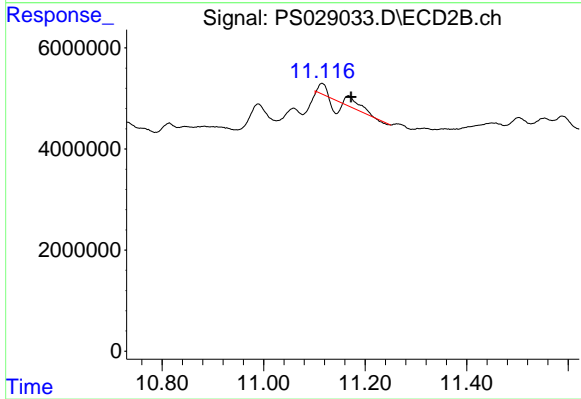
#13 2,4-DB

R.T.: 10.814 min  
 Delta R.T.: 0.019 min  
 Response: -1561111  
 Conc: N.D.



#14 DINOSEB

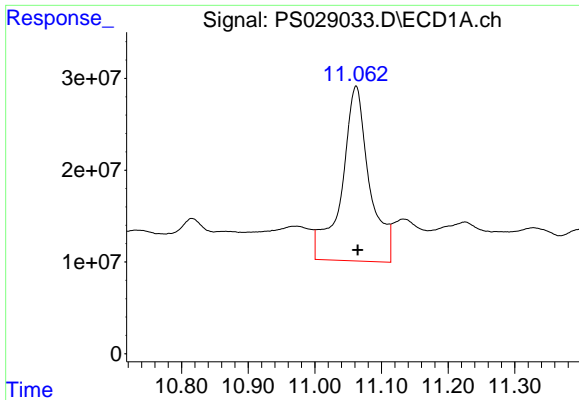
R.T.: 11.225 min  
 Delta R.T.: -0.030 min  
 Response: 292370512  
 Conc: 17.67 ng/ml



#14 DINOSEB

R.T.: 11.167 min  
 Delta R.T.: -0.005 min  
 Response: 2316537  
 Conc: N.D.

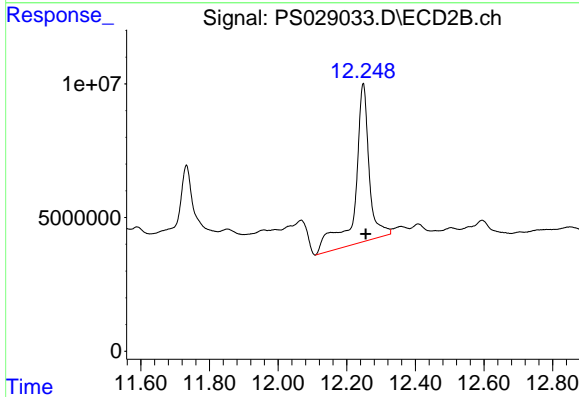




#15 Picloram

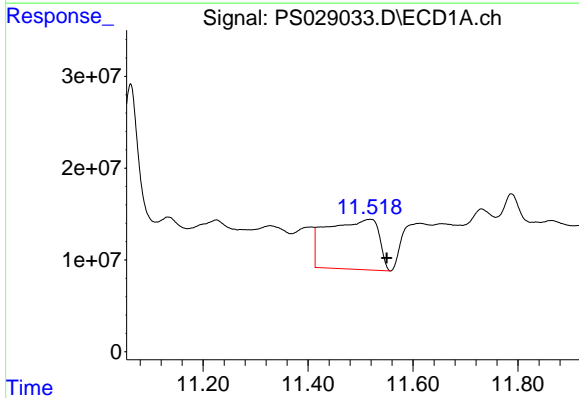
R.T.: 11.062 min  
 Delta R.T.: -0.003 min  
 Response: 549710396  
 Conc: 17.42 ng/ml

Instrument :  
 ECD\_S  
 ClientSampleId :



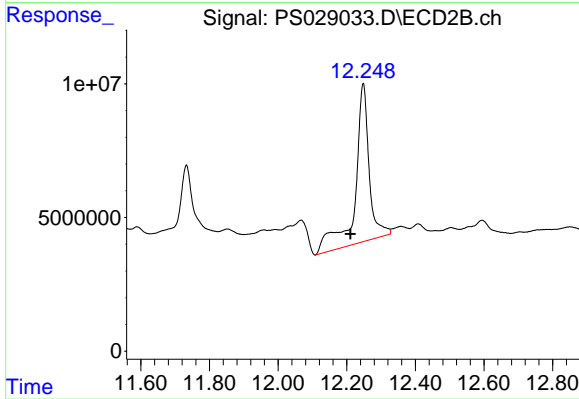
#15 Picloram

R.T.: 12.248 min  
 Delta R.T.: -0.008 min  
 Response: 168714367  
 Conc: 12.57 ng/ml



#16 DCPA

R.T.: 11.518 min  
 Delta R.T.: -0.032 min  
 Response: 373485946  
 Conc: 13.02 ng/ml



#16 DCPA

R.T.: 12.248 min  
 Delta R.T.: 0.037 min  
 Response: 168714367  
 Conc: 14.86 ng/ml