

Data Path : Z:\pestpcbsrv\HPCHEM1\ECD_S\Data\PS020323\
 Data File : PS022027.D
 Signal(s) : Signal #1: ECD1A.ch Signal #2: ECD2B.ch
 Acq On : 03 Feb 2023 14:44
 Operator : AR\AJ
 Sample : 01386-04
 Misc :
 ALS Vial : 8 Sample Multiplier: 1

Instrument :
 ECD_S
 ClientSampleId :

Integration File signal 1: autoint1.e
 Integration File signal 2: autoint2.e
 Quant Time: Feb 03 23:39:52 2023
 Quant Method : Z:\pestpcbsrv\HPCHEM1\ECD_S\Method\PS020223.M
 Quant Title : 8080.M
 QLast Update : Fri Feb 03 10:03:01 2023
 Response via : Initial Calibration
 Integrator: ChemStation

Volume Inj. : 2 µl
 Signal #1 Phase : Rtx-CLPesticides Signal #2 Phase: Rtx-CLPesticides2
 Signal #1 Info : 30M x 0.32mm x0.5 Signal #2 Info : 30M x 0.32mm x 0.25µm

	Compound	RT#1	RT#2	Resp#1	Resp#2	ng/ml	ng/ml

System Monitoring Compounds							
4) S	2,4-DCAA	6.300	6.727	1048.7E6	996.8E6	460.073	492.439
Target Compounds							
1) T	Dalapon	2.371f	2.446	140.4E6	413.1E6	45.214	132.750 #
3) T	4-Nitroph...	6.139	6.336	19483531	15054362	14.476	11.273
5) T	DICAMBA	6.463	6.889	6318678	4470760	<MDL	<MDL #
6) T	MCPD	6.629	6.991	16965120	6146197	2.356	<MDL #
7) T	MCPA	0.000	7.195	0	9112375	N.D.	<MDL
8) T	DICHLORPROP	6.954f	7.526	4374889	133.4E6	1.770	55.773 #
9) T	2,4-D	7.184f	7.788	1442626	6968119	<MDL	2.471 #
10) T	Pentachlo...	7.441	8.218	6994433	4939212	<MDL	<MDL #
11) T	2,4,5-TP ...	8.012f	8.581	57612060	30429281	4.324	2.310 #
12) T	2,4,5-T	8.250	8.964	14782664	18687401	1.030	1.546 #
13) T	2,4-DB	8.753	9.458	61297204	4776814	27.879	2.829 #
14) T	DINOSEB	9.736f	9.822	47154863	103.8E6	4.585	11.109 #
15) T	Picloram	9.636	10.765	311.1E6	370.7E6	16.706	20.428
16) T	DCPA	10.047	10.713	49552078	23262780	2.916	1.512 #

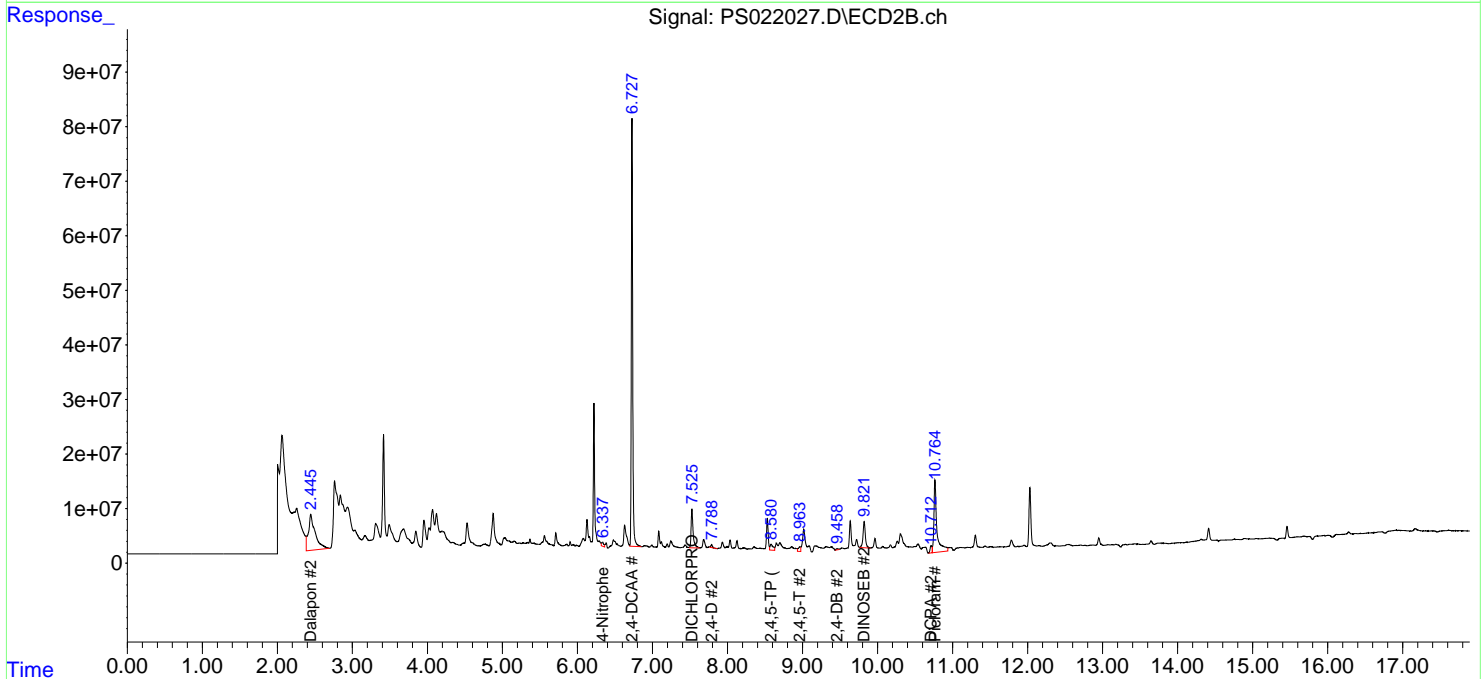
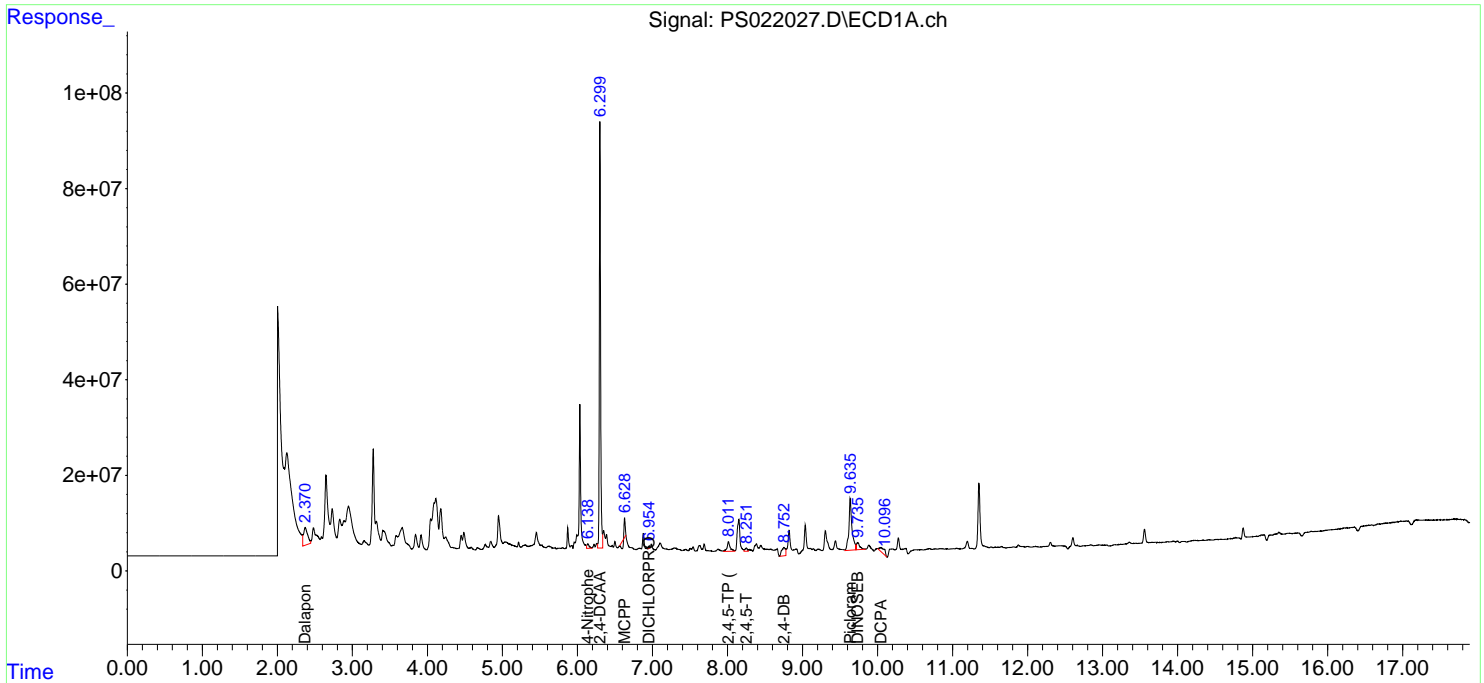
(f)=RT Delta > 1/2 Window (#)=Amounts differ by > 25% (m)=manual int.

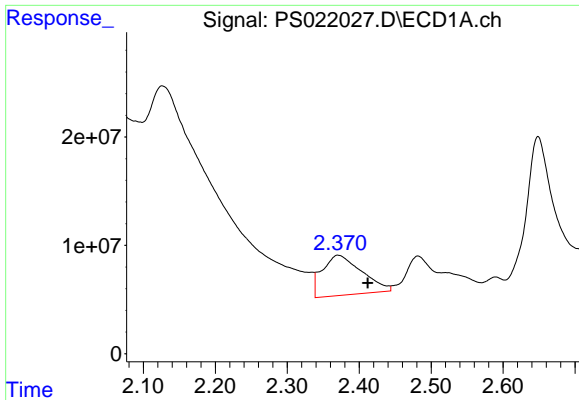
Data Path : Z:\pestpcbsrv\HPCHEM1\ECD_S\Data\PS020323\
 Data File : PS022027.D
 Signal(s) : Signal #1: ECD1A.ch Signal #2: ECD2B.ch
 Acq On : 03 Feb 2023 14:44
 Operator : AR\AJ
 Sample : 01386-04
 Misc :
 ALS Vial : 8 Sample Multiplier: 1

Instrument :
 ECD_S
 ClientSampleId :

Integration File signal 1: autoint1.e
 Integration File signal 2: autoint2.e
 Quant Time: Feb 03 23:39:52 2023
 Quant Method : Z:\pestpcbsrv\HPCHEM1\ECD_S\Method\PS020223.M
 Quant Title : 8080.M
 QLast Update : Fri Feb 03 10:03:01 2023
 Response via : Initial Calibration
 Integrator: ChemStation

Volume Inj. : 2 µl
 Signal #1 Phase : Rtx-CLPesticides Signal #2 Phase: Rtx-CLPesticides2
 Signal #1 Info : 30M x 0.32mm x0.5 Signal #2 Info : 30M x 0.32mm x 0.25µm

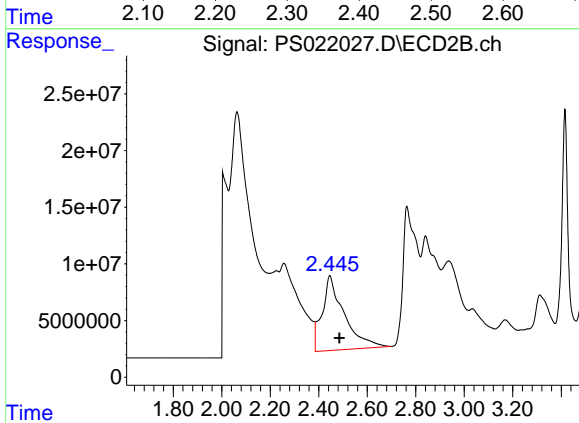




#1 Dalapon

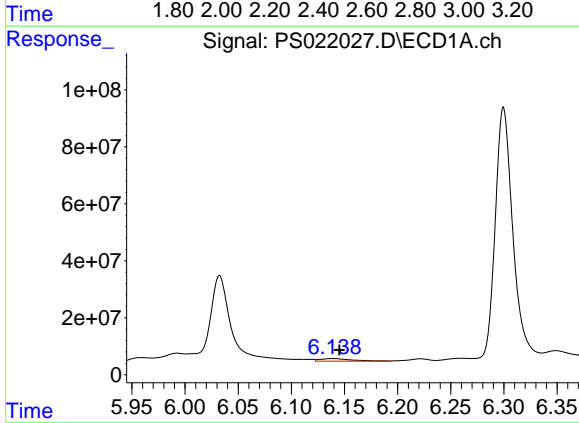
R.T.: 2.371 min
 Delta R.T.: -0.041 min
 Response: 140385281
 Conc: 45.21 ng/ml

Instrument :
 ECD_S
 ClientSampleId :



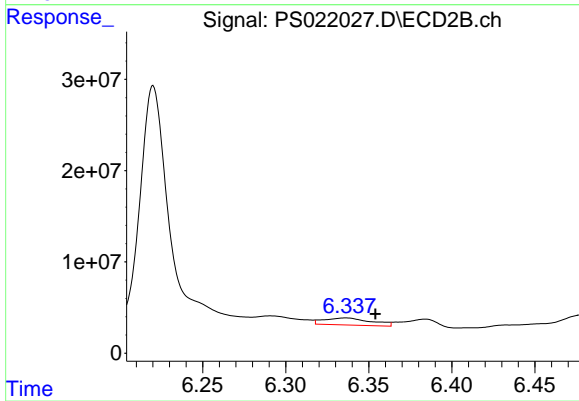
#1 Dalapon

R.T.: 2.446 min
 Delta R.T.: -0.039 min
 Response: 413068385
 Conc: 132.75 ng/ml



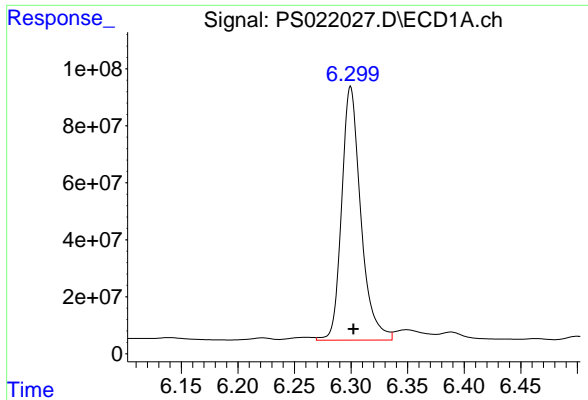
#3 4-Nitrophenol

R.T.: 6.139 min
 Delta R.T.: -0.006 min
 Response: 19483531
 Conc: 14.48 ng/ml



#3 4-Nitrophenol

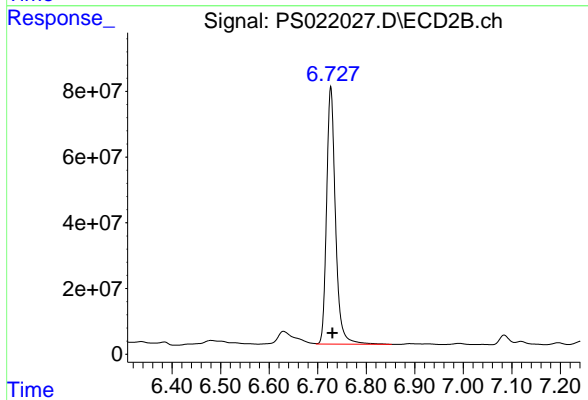
R.T.: 6.336 min
 Delta R.T.: -0.018 min
 Response: 15054362
 Conc: 11.27 ng/ml



#4 2,4-DCAA

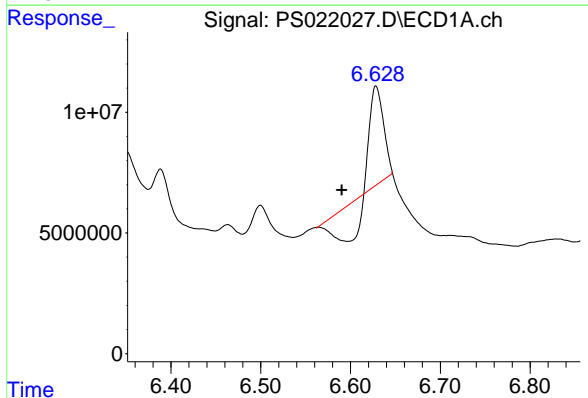
R.T.: 6.300 min
 Delta R.T.: -0.002 min
 Response: 1048674980
 Conc: 460.07 ng/ml

Instrument :
 ECD_S
 ClientSampleId :



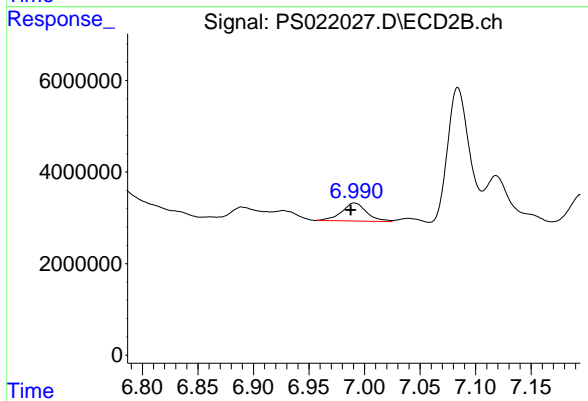
#4 2,4-DCAA

R.T.: 6.727 min
 Delta R.T.: -0.003 min
 Response: 996814588
 Conc: 492.44 ng/ml



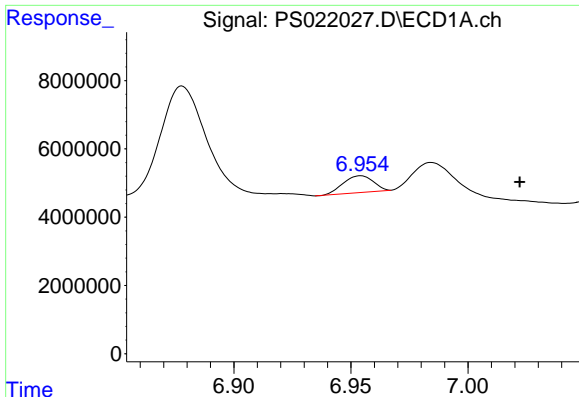
#6 MCP

R.T.: 6.629 min
 Delta R.T.: 0.038 min
 Response: 16965120
 Conc: 2.36 ug/ml



#6 MCP

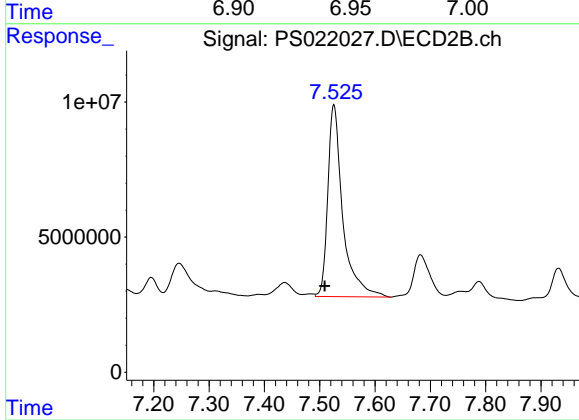
R.T.: 6.991 min
 Delta R.T.: 0.003 min
 Response: 6146197
 Conc: N.D.



#8 DICHLORPROP

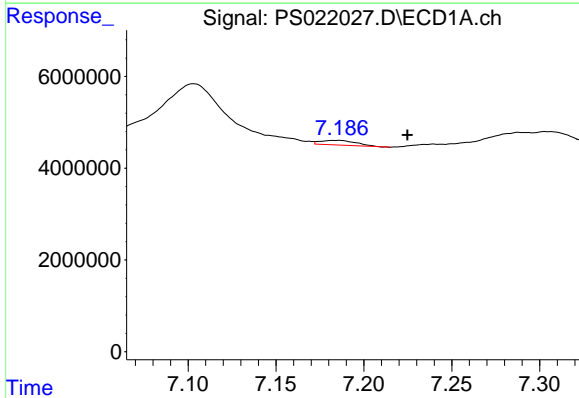
R.T.: 6.954 min
 Delta R.T.: -0.068 min
 Response: 4374889
 Conc: 1.77 ng/ml

Instrument :
 ECD_S
 ClientSampleId :



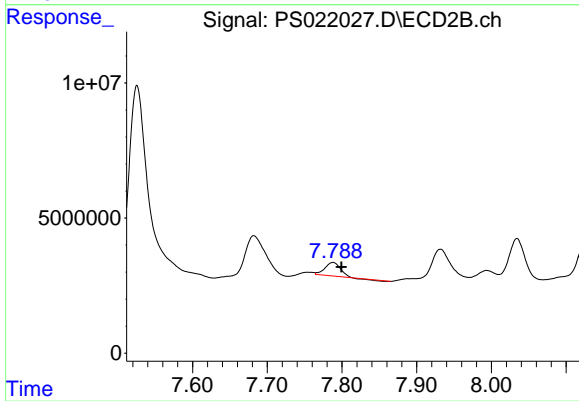
#8 DICHLORPROP

R.T.: 7.526 min
 Delta R.T.: 0.017 min
 Response: 133436316
 Conc: 55.77 ng/ml



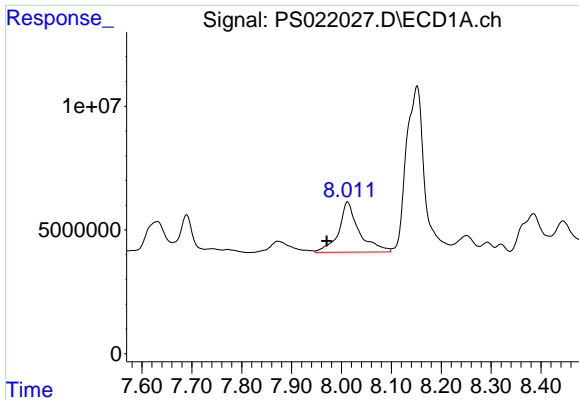
#9 2,4-D

R.T.: 7.184 min
 Delta R.T.: -0.040 min
 Response: 1442626
 Conc: N.D.



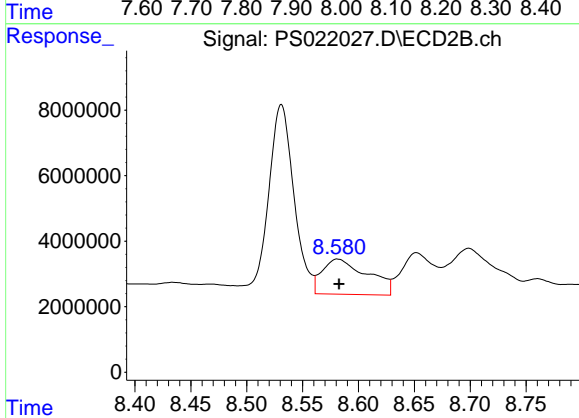
#9 2,4-D

R.T.: 7.788 min
 Delta R.T.: -0.011 min
 Response: 6968119
 Conc: 2.47 ng/ml

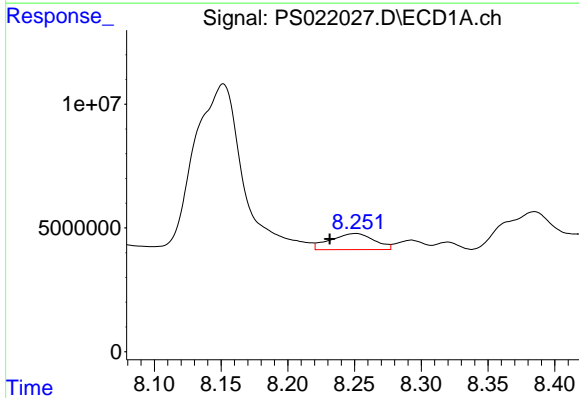


#11 2,4,5-TP (SILVEX)
 R.T.: 8.012 min
 Delta R.T.: 0.041 min
 Response: 57612060
 Conc: 4.32 ng/ml

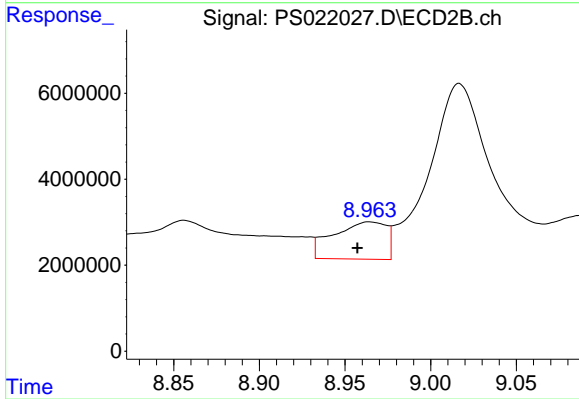
Instrument :
 ECD_S
 ClientSampleId :



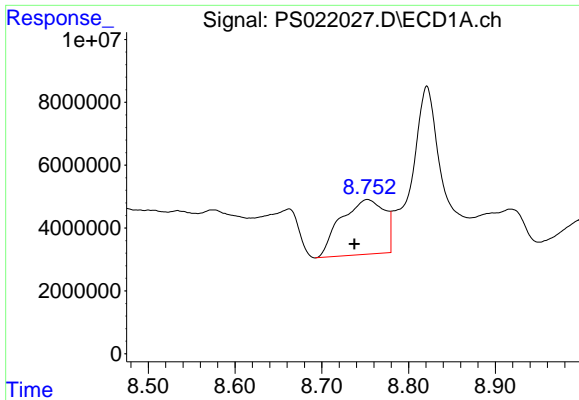
#11 2,4,5-TP (SILVEX)
 R.T.: 8.581 min
 Delta R.T.: -0.001 min
 Response: 30429281
 Conc: 2.31 ng/ml



#12 2,4,5-T
 R.T.: 8.250 min
 Delta R.T.: 0.019 min
 Response: 14782664
 Conc: 1.03 ng/ml



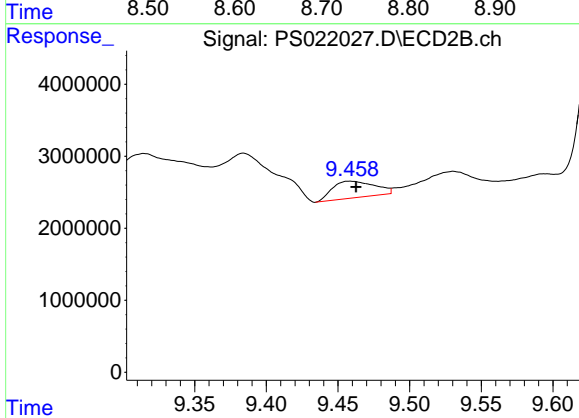
#12 2,4,5-T
 R.T.: 8.964 min
 Delta R.T.: 0.007 min
 Response: 18687401
 Conc: 1.55 ng/ml



#13 2,4-DB

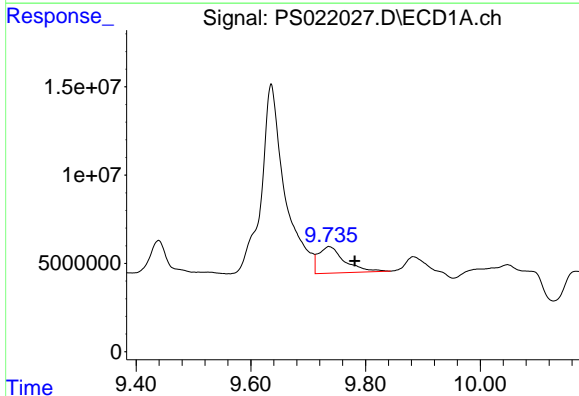
R.T.: 8.753 min
 Delta R.T.: 0.015 min
 Response: 61297204
 Conc: 27.88 ng/ml

Instrument :
 ECD_S
 ClientSampleId :



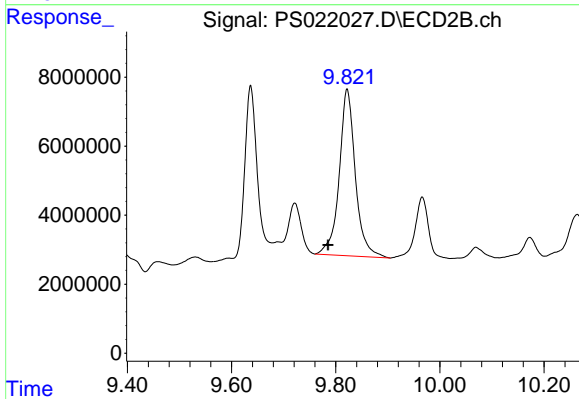
#13 2,4-DB

R.T.: 9.458 min
 Delta R.T.: -0.005 min
 Response: 4776814
 Conc: 2.83 ng/ml



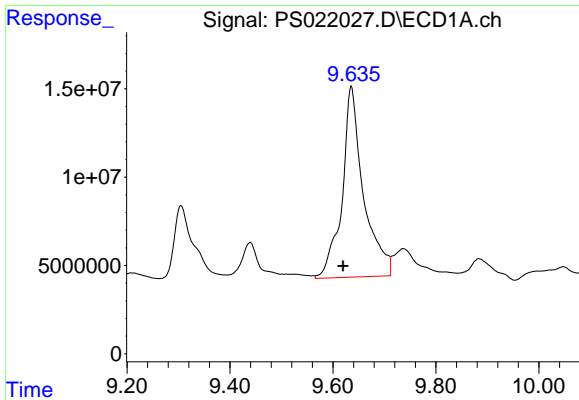
#14 DINOSEB

R.T.: 9.736 min
 Delta R.T.: -0.044 min
 Response: 47154863
 Conc: 4.59 ng/ml



#14 DINOSEB

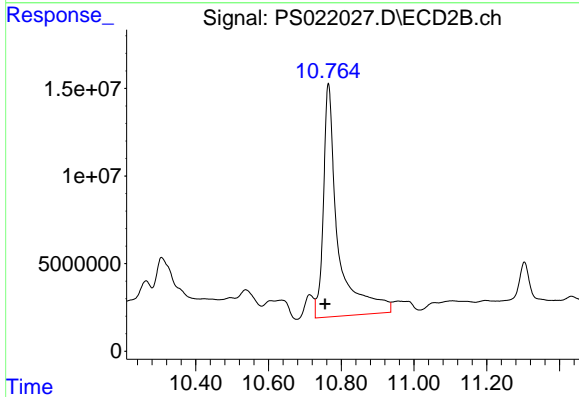
R.T.: 9.822 min
 Delta R.T.: 0.036 min
 Response: 103840899
 Conc: 11.11 ng/ml



#15 Picloram

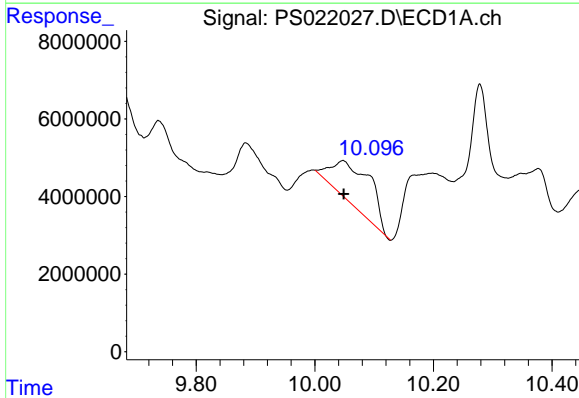
R.T.: 9.636 min
 Delta R.T.: 0.016 min
 Response: 311132333
 Conc: 16.71 ng/ml

Instrument :
 ECD_S
 ClientSampleId :



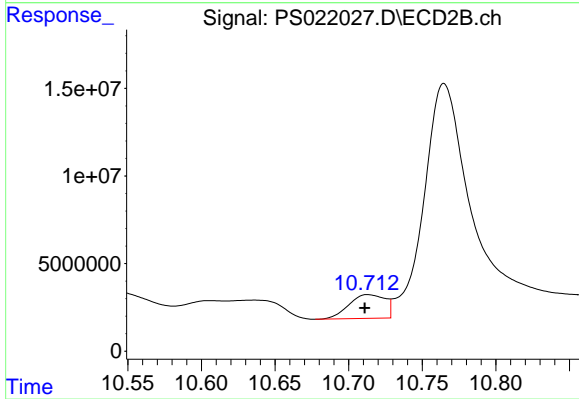
#15 Picloram

R.T.: 10.765 min
 Delta R.T.: 0.009 min
 Response: 370744666
 Conc: 20.43 ng/ml



#16 DCPA

R.T.: 10.047 min
 Delta R.T.: -0.001 min
 Response: 49552078
 Conc: 2.92 ng/ml



#16 DCPA

R.T.: 10.713 min
 Delta R.T.: 0.002 min
 Response: 23262780
 Conc: 1.51 ng/ml