

Data Path : Z:\pestpcbsrv\HPCHEM1\ECD_S\Data\PS020422\
 Data File : PS018238.D
 Signal(s) : Signal #1: ECD1A.ch Signal #2: ECD2B.ch
 Acq On : 04 Feb 2022 10:50
 Operator : AJ\MA
 Sample : HSTDCCC750
 Misc :
 ALS Vial : 3 Sample Multiplier: 1

Instrument :
 ECD_S
 ClientSampleId :
 HSTDCCC750

Integration File signal 1: autoint1.e
 Integration File signal 2: autoint2.e
 Quant Time: Feb 04 21:34:20 2022
 Quant Method : Z:\pestpcbsrv\HPCHEM1\ECD_S\Method\PS010522.M
 Quant Title : 8080.M
 QLast Update : Thu Jan 06 10:21:08 2022
 Response via : Initial Calibration
 Integrator: ChemStation

Volume Inj. : 2 µl
 Signal #1 Phase : Rtx-CLPesticides Signal #2 Phase: Rtx-CLPesticides2
 Signal #1 Info : 30M x 0.32mm x0.5 Signal #2 Info : 30M x 0.32mm x 0.25µm

Compound	RT#1	RT#2	Resp#1	Resp#2	ng/ml	ng/ml
System Monitoring Compounds						
4) S 2,4-DCAA	7.047	6.650	1055.0E6	441.2E6	729.849	760.343
Target Compounds						
1) T Dalapon	2.905	2.411	1620.2E6	479.6E6	660.437	627.133
2) T 3,5-DICHL...	6.287	5.865	1435.4E6	624.0E6	667.229	705.409
3) T 4-Nitroph...	6.878	6.288	575.7E6	227.3E6	712.830	741.627
5) T DICAMBA	7.232	6.803	4264.5E6	1828.7E6	682.933	695.572
6) T MCPP	7.400	6.897	322.2E6	144.6E6	69.003	67.222
7) T MCPA	7.548	7.107	445.2E6	203.4E6	66.729	68.155
8) T DICHLORPROP	7.919	7.415	1078.2E6	455.7E6	685.403	682.707
9) T 2,4-D	8.151	7.708	1268.4E6	518.3E6	696.564	704.302
10) T Pentachlo...	8.443	8.116	14404.7E6	5811.0E6	681.843	689.948
11) T 2,4,5-TP ...	8.994	8.481	5829.7E6	2519.7E6	688.913	706.859
12) T 2,4,5-T	9.280	8.857	6394.7E6	2358.9E6	721.411	721.140
13) T 2,4-DB	9.830	9.361	1190.2E6	318.9E6	720.011	720.834
14) T DINOSEB	10.968	9.679	4631.4E6	1666.0E6	705.262	667.726
15) T Picloram	10.813	10.676	7242.8E6	2962.8E6	606.810	633.591
16) T DCPA	11.237	10.605	7411.2E6	3083.4E6	685.914	698.310

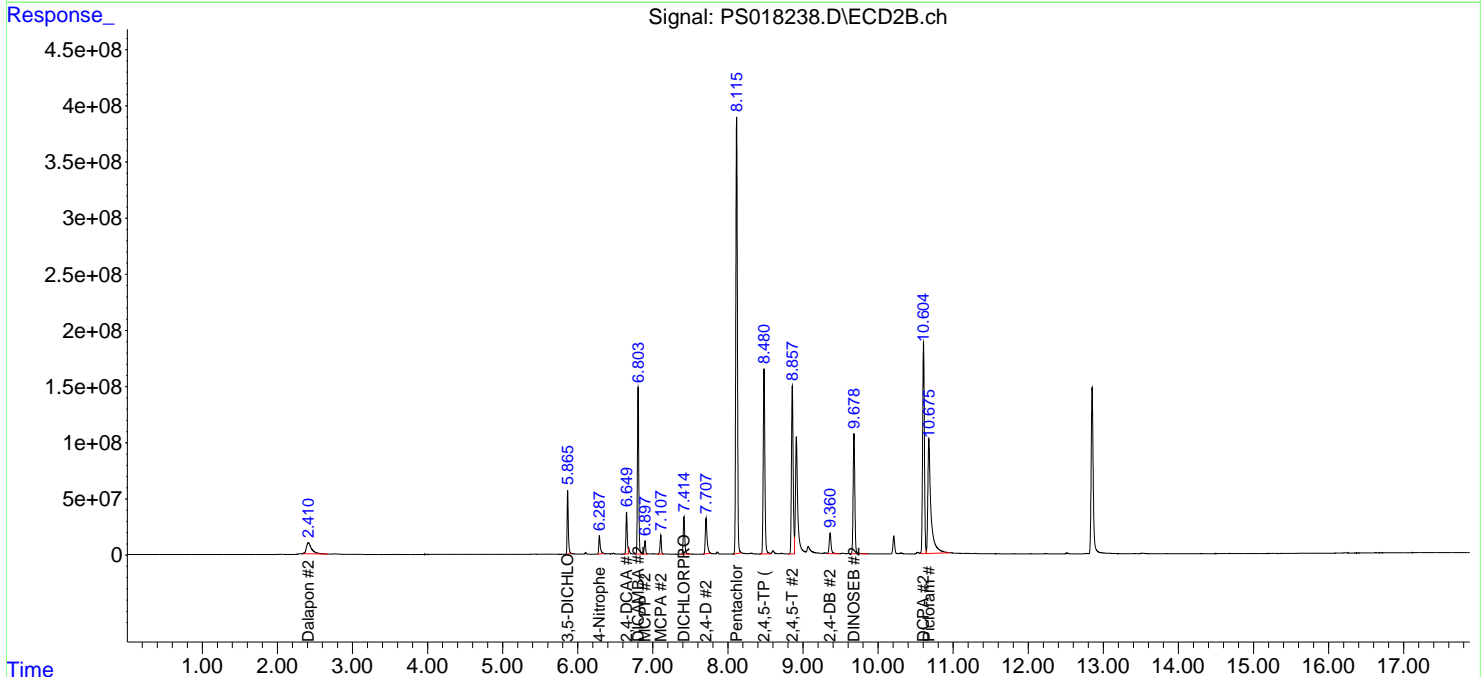
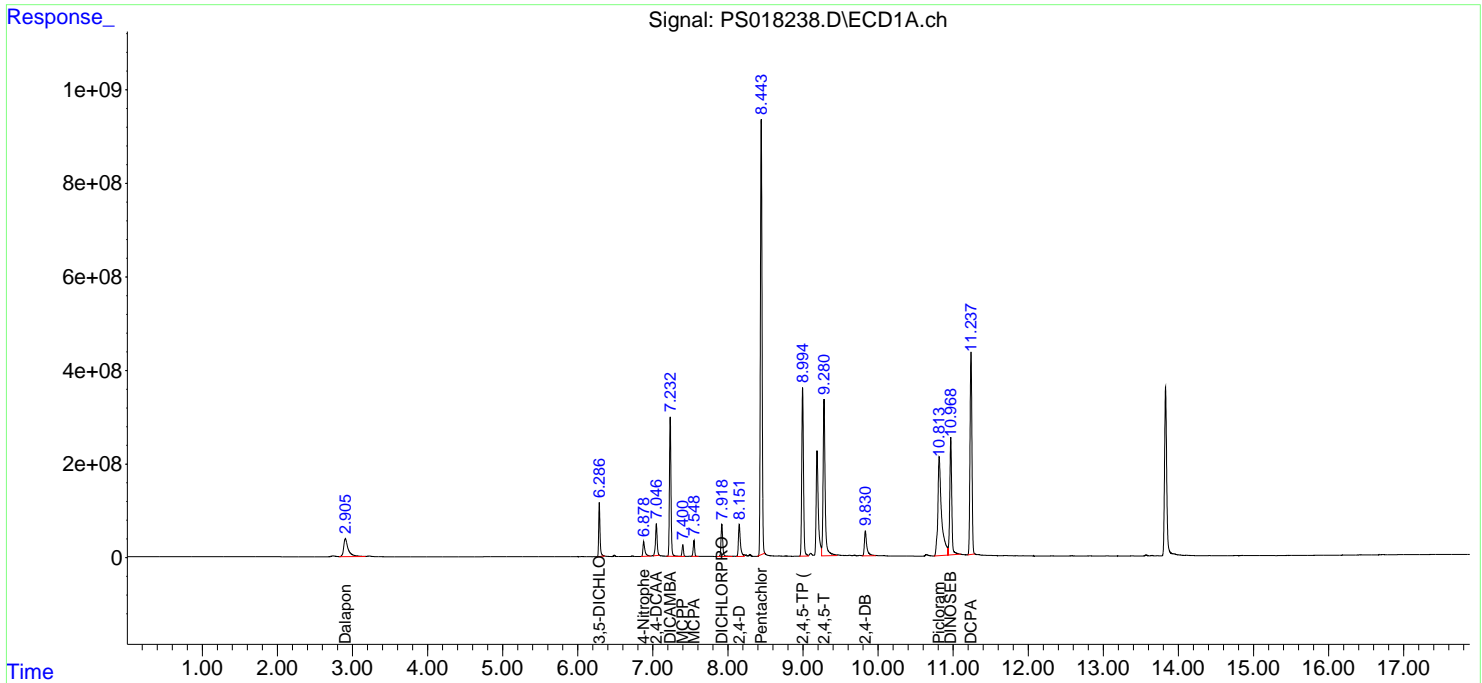
(f)=RT Delta > 1/2 Window (#)=Amounts differ by > 25% (m)=manual int.

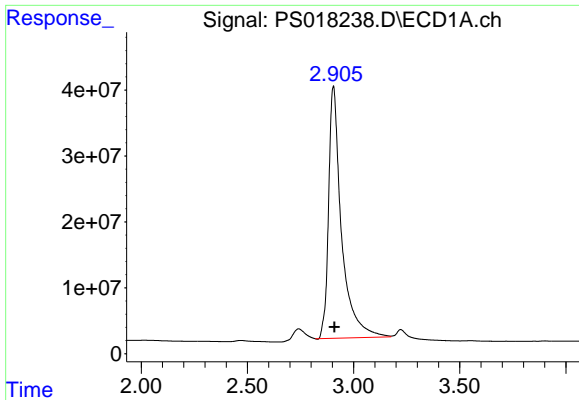
Data Path : Z:\pestpcbsrv\HPCHEM1\ECD_S\Data\PS020422\
 Data File : PS018238.D
 Signal(s) : Signal #1: ECD1A.ch Signal #2: ECD2B.ch
 Acq On : 04 Feb 2022 10:50
 Operator : AJ\MA
 Sample : HSTDCCC750
 Misc :
 ALS Vial : 3 Sample Multiplier: 1

Instrument :
 ECD_S
ClientSampleId :
 HSTDCCC750

Integration File signal 1: autoint1.e
 Integration File signal 2: autoint2.e
 Quant Time: Feb 04 21:34:20 2022
 Quant Method : Z:\pestpcbsrv\HPCHEM1\ECD_S\Method\PS010522.M
 Quant Title : 8080.M
 QLast Update : Thu Jan 06 10:21:08 2022
 Response via : Initial Calibration
 Integrator: ChemStation

Volume Inj. : 2 µl
 Signal #1 Phase : Rtx-CLPesticides Signal #2 Phase: Rtx-CLPesticides2
 Signal #1 Info : 30M x 0.32mm x0.5 Signal #2 Info : 30M x 0.32mm x 0.25µm

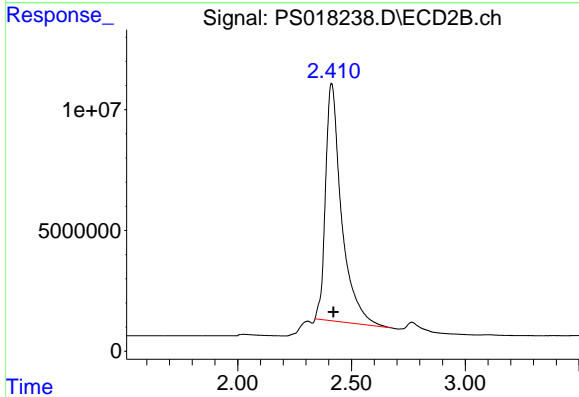




#1 Dalapon

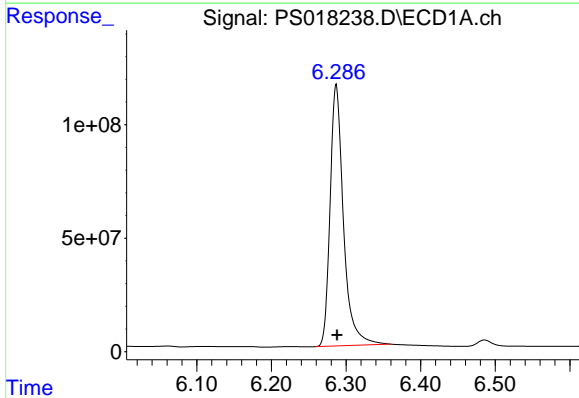
R.T.: 2.905 min
 Delta R.T.: -0.004 min
 Response: 1620200198
 Conc: 660.44 ng/ml

Instrument :
 ECD_S
 ClientSampleId :
 HSTDCCC750



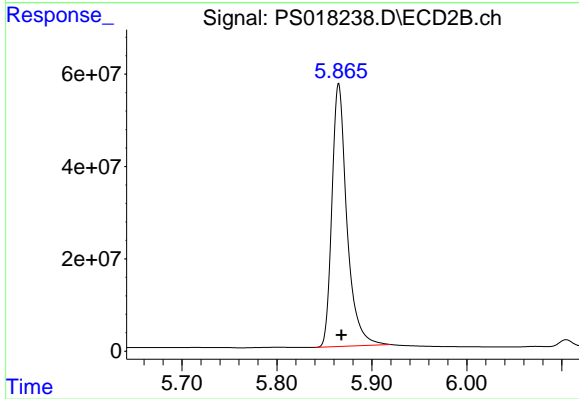
#1 Dalapon

R.T.: 2.411 min
 Delta R.T.: -0.010 min
 Response: 479561429
 Conc: 627.13 ng/ml



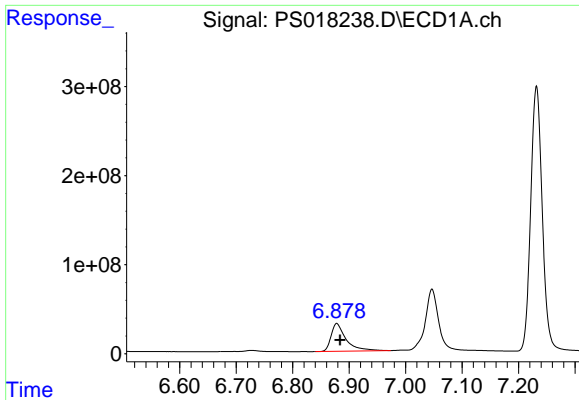
#2 3,5-DICHLOROBENZOIC ACID

R.T.: 6.287 min
 Delta R.T.: -0.001 min
 Response: 1435371437
 Conc: 667.23 ng/ml



#2 3,5-DICHLOROBENZOIC ACID

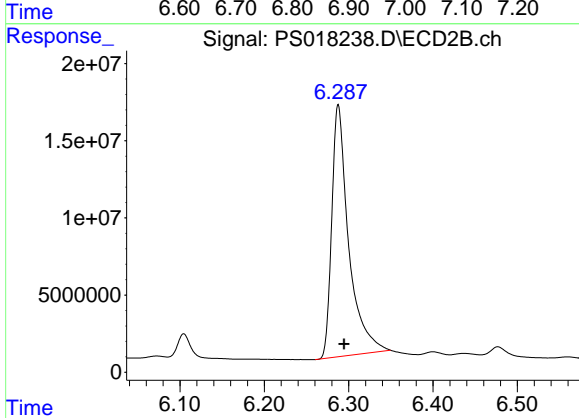
R.T.: 5.865 min
 Delta R.T.: -0.003 min
 Response: 624025705
 Conc: 705.41 ng/ml



#3 4-Nitrophenol

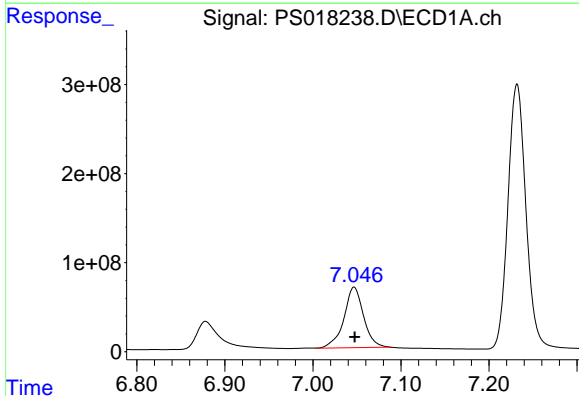
R.T.: 6.878 min
Delta R.T.: -0.006 min
Response: 575741325
Conc: 712.83 ng/ml

Instrument :
ECD_S
ClientSampleId :
HSTDCCC750



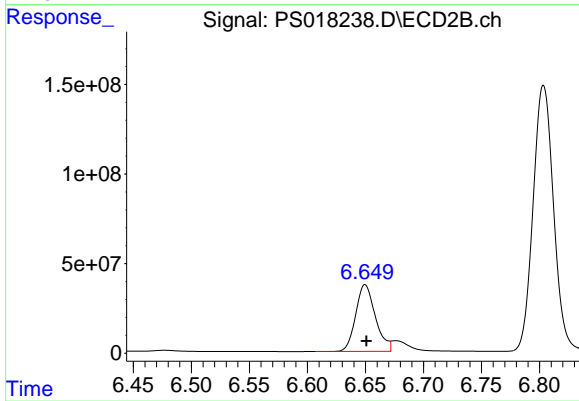
#3 4-Nitrophenol

R.T.: 6.288 min
Delta R.T.: -0.007 min
Response: 227325253
Conc: 741.63 ng/ml



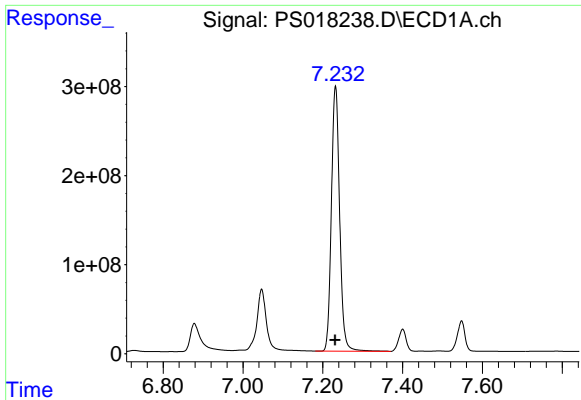
#4 2,4-DCAA

R.T.: 7.047 min
Delta R.T.: 0.000 min
Response: 1054987225
Conc: 729.85 ng/ml



#4 2,4-DCAA

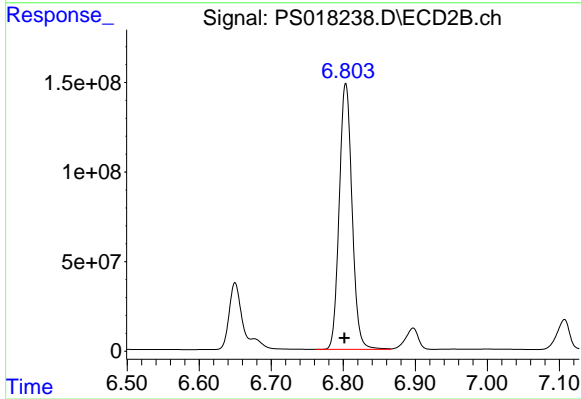
R.T.: 6.650 min
Delta R.T.: -0.001 min
Response: 441188035
Conc: 760.34 ng/ml



#5 DICAMBA

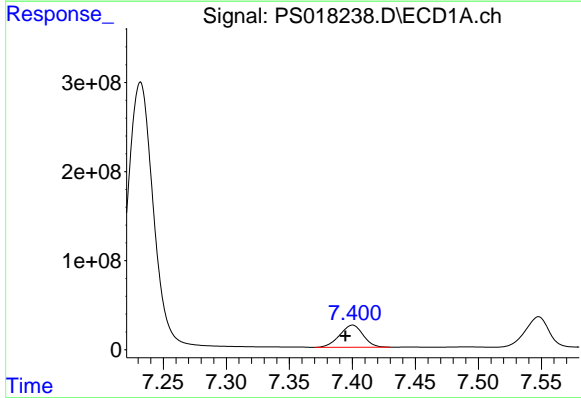
R.T.: 7.232 min
 Delta R.T.: 0.000 min
 Response: 4264514883
 Conc: 682.93 ng/ml

Instrument :
 ECD_S
 ClientSampleId :
 HSTDCCC750



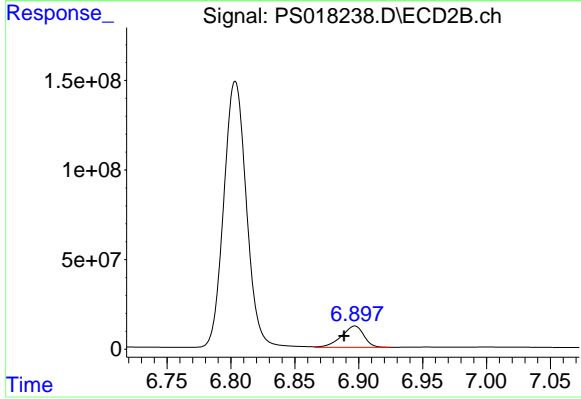
#5 DICAMBA

R.T.: 6.803 min
 Delta R.T.: 0.002 min
 Response: 1828695056
 Conc: 695.57 ng/ml



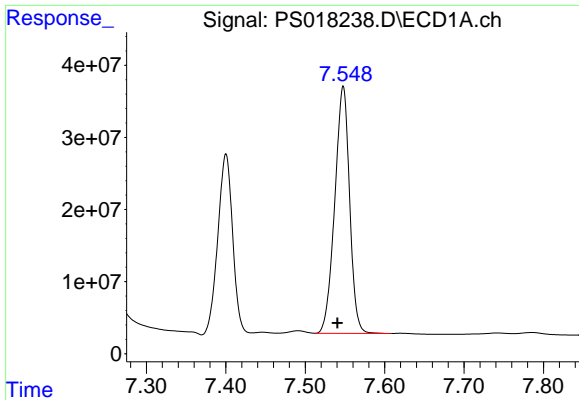
#6 MCP

R.T.: 7.400 min
 Delta R.T.: 0.006 min
 Response: 322171793
 Conc: 69.00 ug/ml



#6 MCP

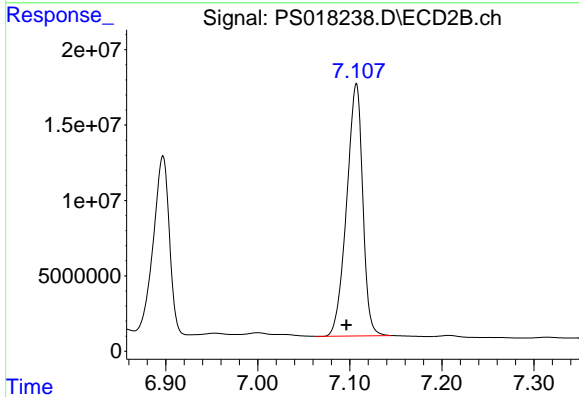
R.T.: 6.897 min
 Delta R.T.: 0.009 min
 Response: 144589540
 Conc: 67.22 ug/ml



#7 MCPA

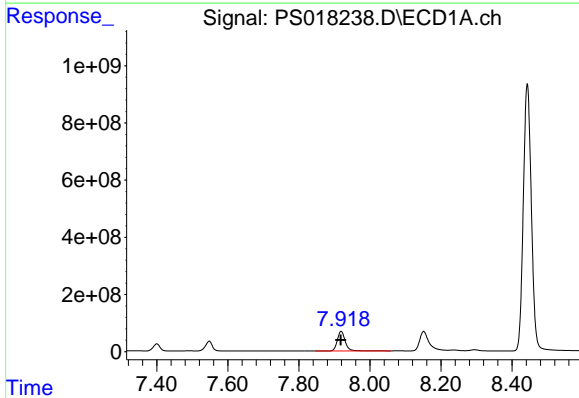
R.T.: 7.548 min
 Delta R.T.: 0.007 min
 Response: 445195792
 Conc: 66.73 ug/ml

Instrument :
 ECD_S
 ClientSampleId :
 HSTDCCC750



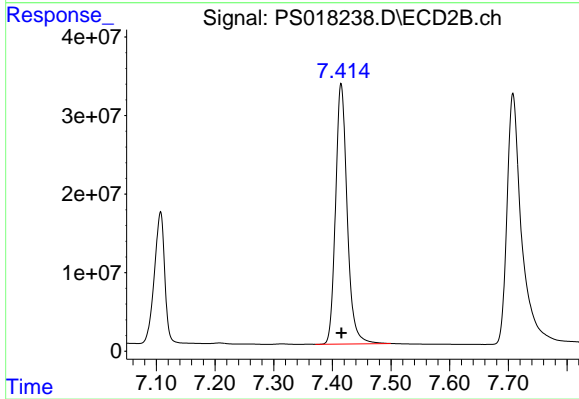
#7 MCPA

R.T.: 7.107 min
 Delta R.T.: 0.011 min
 Response: 203370191
 Conc: 68.16 ug/ml



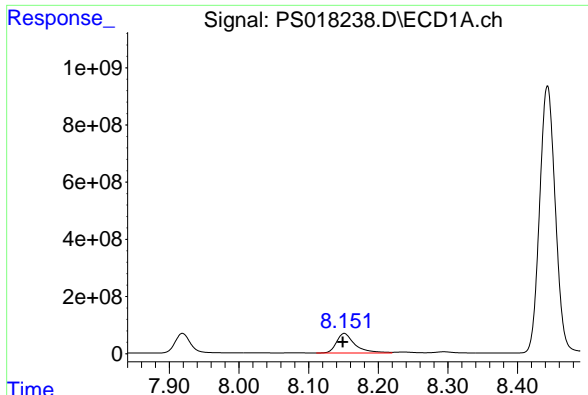
#8 DICHLORPROP

R.T.: 7.919 min
 Delta R.T.: 0.000 min
 Response: 1078171307
 Conc: 685.40 ng/ml



#8 DICHLORPROP

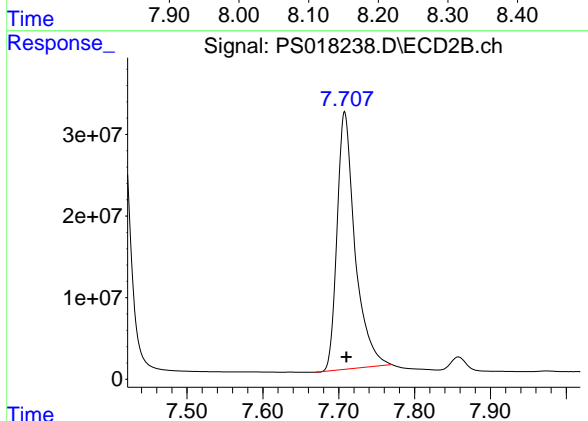
R.T.: 7.415 min
 Delta R.T.: 0.000 min
 Response: 455655182
 Conc: 682.71 ng/ml



#9 2,4-D

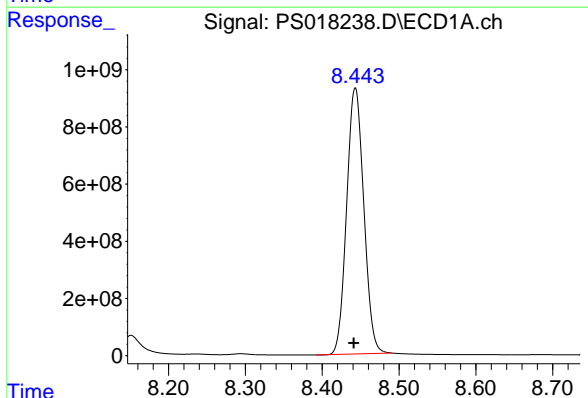
R.T.: 8.151 min
Delta R.T.: 0.002 min
Response: 1268397402
Conc: 696.56 ng/ml

Instrument :
ECD_S
ClientSampleId :
HSTDCCC750



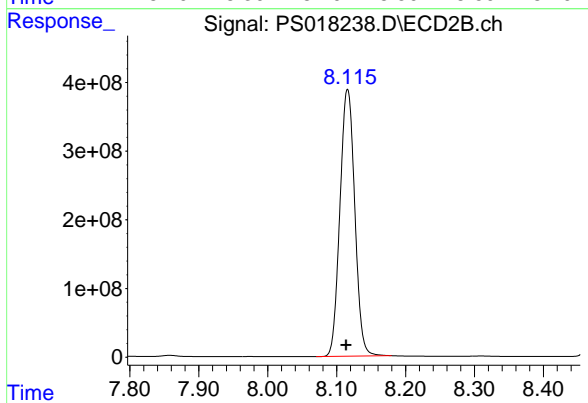
#9 2,4-D

R.T.: 7.708 min
Delta R.T.: -0.002 min
Response: 518328335
Conc: 704.30 ng/ml



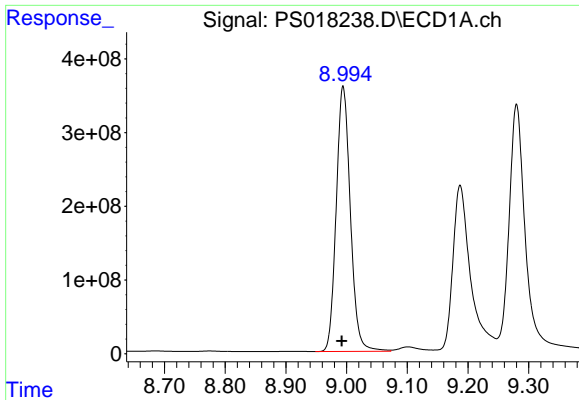
#10 Pentachlorophenol

R.T.: 8.443 min
Delta R.T.: 0.002 min
Response: 14404655364
Conc: 681.84 ng/ml



#10 Pentachlorophenol

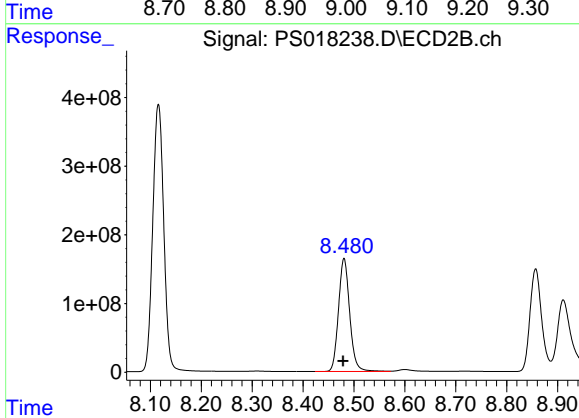
R.T.: 8.116 min
Delta R.T.: 0.002 min
Response: 5810989341
Conc: 689.95 ng/ml



#11 2,4,5-TP (SILVEX)

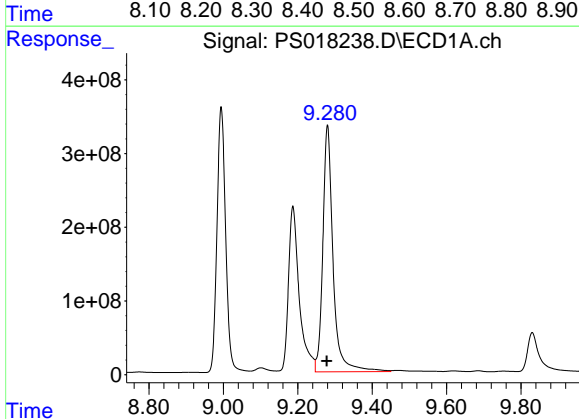
R.T.: 8.994 min
 Delta R.T.: 0.002 min
 Response: 5829675622
 Conc: 688.91 ng/ml

Instrument :
 ECD_S
 ClientSampleId :
 HSTDCCC750



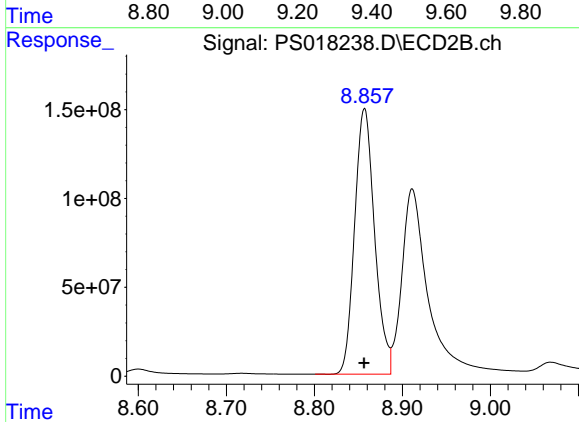
#11 2,4,5-TP (SILVEX)

R.T.: 8.481 min
 Delta R.T.: 0.002 min
 Response: 2519733511
 Conc: 706.86 ng/ml



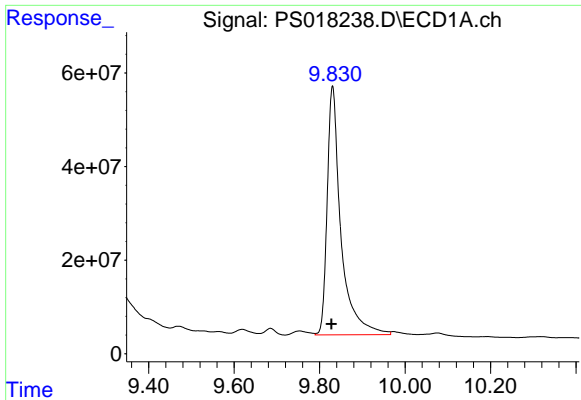
#12 2,4,5-T

R.T.: 9.280 min
 Delta R.T.: 0.002 min
 Response: 6394686793
 Conc: 721.41 ng/ml



#12 2,4,5-T

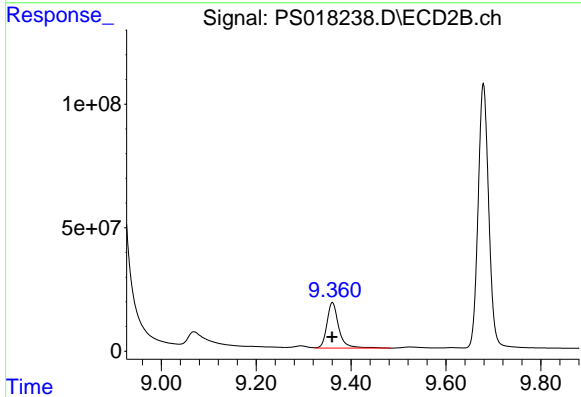
R.T.: 8.857 min
 Delta R.T.: 0.000 min
 Response: 2358860798
 Conc: 721.14 ng/ml



#13 2,4-DB

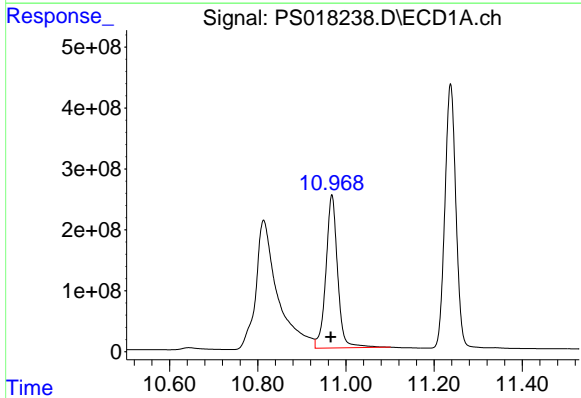
R.T.: 9.830 min
 Delta R.T.: 0.003 min
 Response: 1190202996
 Conc: 720.01 ng/ml

Instrument :
 ECD_S
 ClientSampleId :
 HSTDCCC750



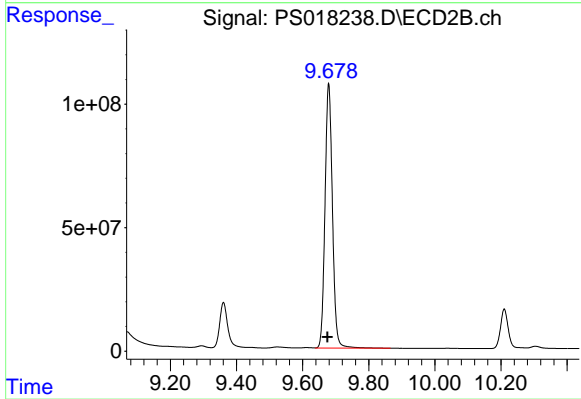
#13 2,4-DB

R.T.: 9.361 min
 Delta R.T.: 0.000 min
 Response: 318938347
 Conc: 720.83 ng/ml



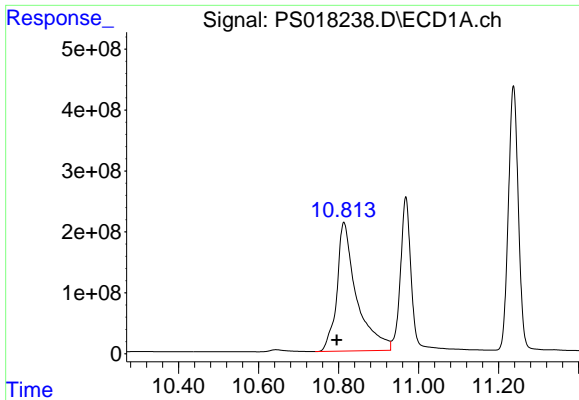
#14 DINOSEB

R.T.: 10.968 min
 Delta R.T.: 0.003 min
 Response: 4631415653
 Conc: 705.26 ng/ml



#14 DINOSEB

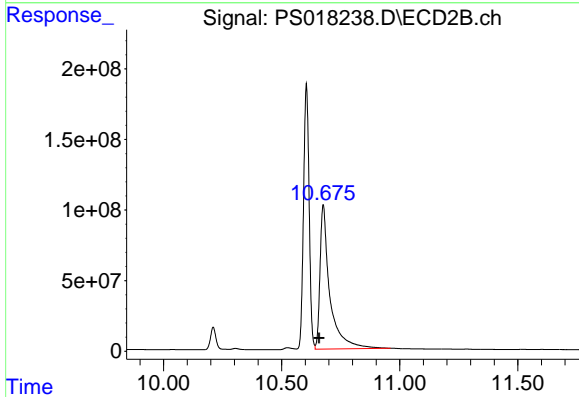
R.T.: 9.679 min
 Delta R.T.: 0.004 min
 Response: 1665985840
 Conc: 667.73 ng/ml



#15 Picloram

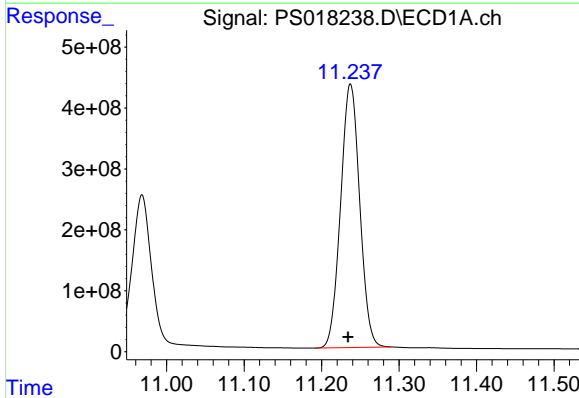
R.T.: 10.813 min
 Delta R.T.: 0.017 min
 Response: 7242836178
 Conc: 606.81 ng/ml

Instrument :
 ECD_S
 ClientSampleId :
 HSTDCCC750



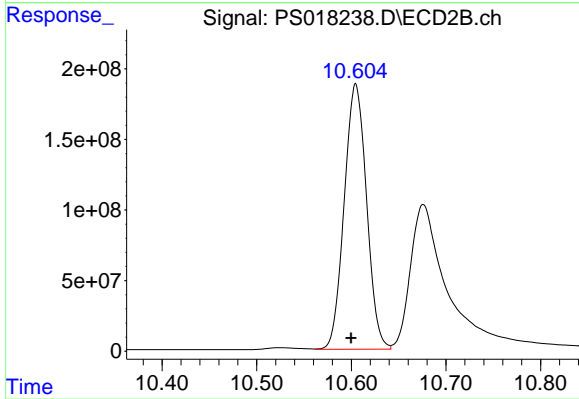
#15 Picloram

R.T.: 10.676 min
 Delta R.T.: 0.017 min
 Response: 2962765687
 Conc: 633.59 ng/ml



#16 DCPA

R.T.: 11.237 min
 Delta R.T.: 0.003 min
 Response: 7411157961
 Conc: 685.91 ng/ml



#16 DCPA

R.T.: 10.605 min
 Delta R.T.: 0.005 min
 Response: 3083377388
 Conc: 698.31 ng/ml