

Data Path : Z:\pestpcbsrv\HPCHEM1\ECD_S\Data\PS020519\
 Data File : PS003019.D
 Signal(s) : Signal #1: ECD1A.ch Signal #2: ECD2B.ch
 Acq On : 05 Feb 2019 11:22
 Operator : EI\SJ
 Sample : K1011-14
 Misc :
 ALS Vial : 4 Sample Multiplier: 1

Instrument :
 ECD_S
 ClientSampleId :
 OR-02-013119-A

Integration File signal 1: autoint1.e
 Integration File signal 2: autoint2.e
 Quant Time: Feb 05 13:24:50 2019
 Quant Method : Z:\pestpcbsrv\HPCHEM1\ECD_S\Method\PS012819.M
 Quant Title : 8080.M
 QLast Update : Tue Jan 29 06:11:45 2019
 Response via : Initial Calibration
 Integrator: ChemStation

Volume Inj. : 2 µl
 Signal #1 Phase : Rtx-CLPesticides Signal #2 Phase: Rtx-CLPesticides2
 Signal #1 Info : 30M x 0.32mm x0.5 Signal #2 Info : 30M x 0.32mm x 0.25µm

Compound	RT#1	RT#2	Resp#1	Resp#2	ng/ml	ng/ml

System Monitoring Compounds						
4) S 2,4-DCAA	11.281	10.776	266.8E6	416.7E6	702.838	974.538 #
Target Compounds						
2) T 3,5-DICHL...	0.000	8.943	0	5077305	N.D.	9.009 #
6) T MCPP	0.000	11.340	0	2857036	N.D.	2.590 #
7) T MCPA	12.288	11.726	1894581	708971	1.070	0.451 #
10) T Pentachlo...	13.526	13.276	5480838	629714	0.855	0.102 #
11) T 2,4,5-TP ...	14.406	0.000	56768107	0	22.542	N.D. #
12) T 2,4,5-T	0.000	14.436	0	3047774	N.D.	1.593 #
14) T DINOSEB	0.000	15.485	0	5595286	N.D.	3.192 #
15) T Picloram	16.789	16.699	9299615	21376569	2.940	7.110 #
16) T DCPA	17.407	16.699	-3347252	21376569	N.D.	6.901

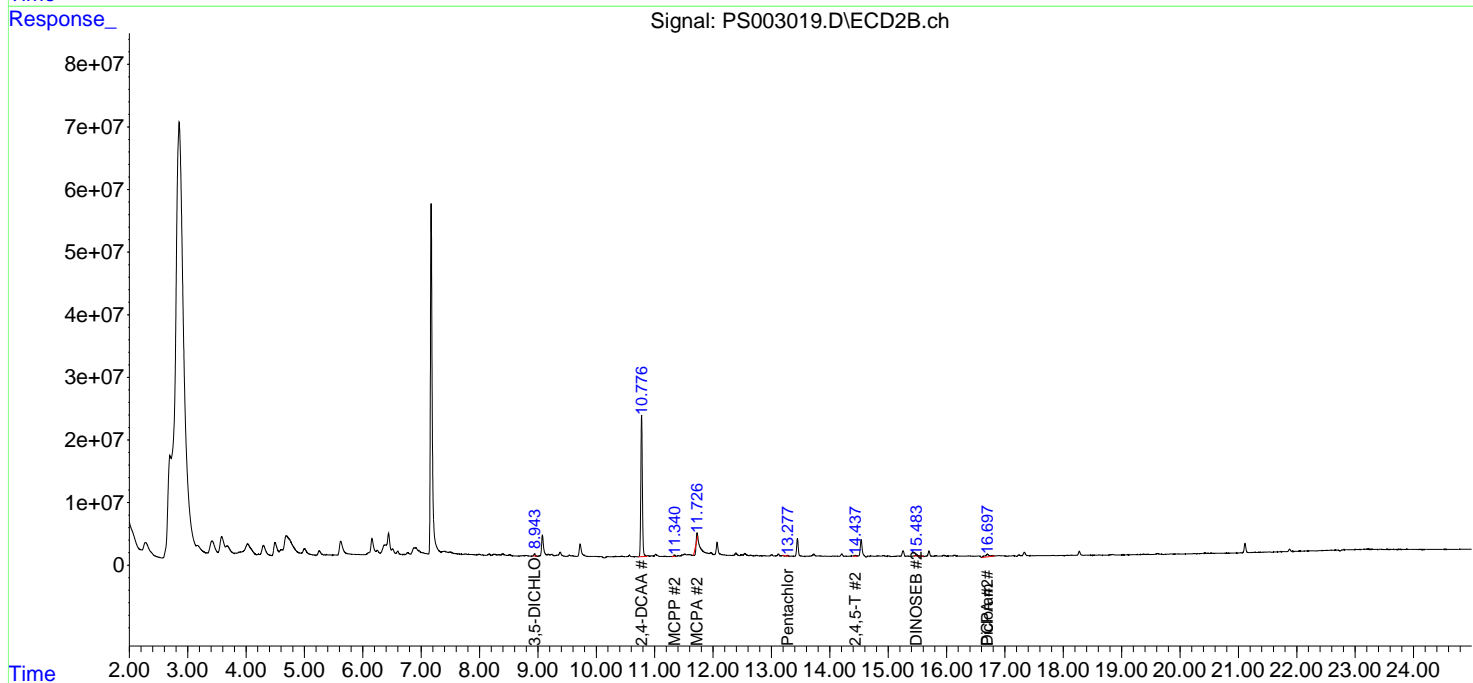
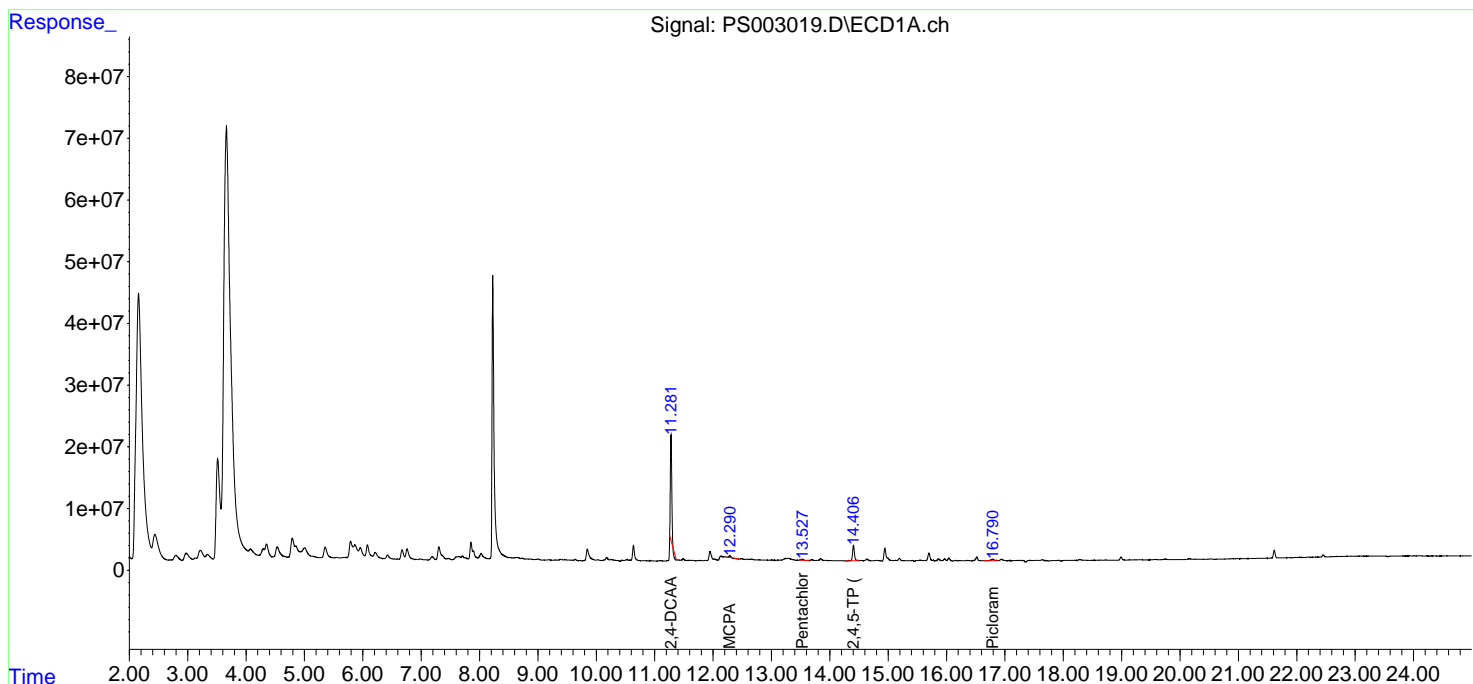
(f)=RT Delta > 1/2 Window (#)=Amounts differ by > 25% (m)=manual int.

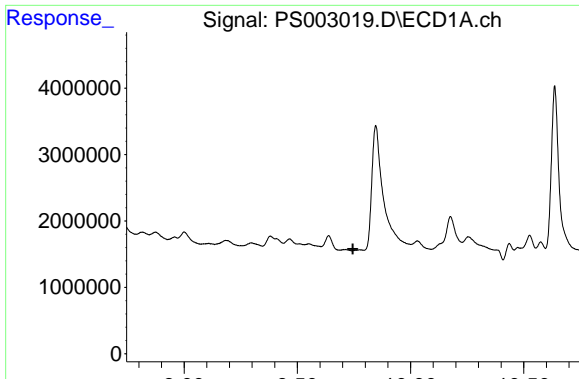
Data Path : Z:\pestpcbsrv\HPCHEM1\ECD_S\Data\PS020519\
 Data File : PS003019.D
 Signal(s) : Signal #1: ECD1A.ch Signal #2: ECD2B.ch
 Acq On : 05 Feb 2019 11:22
 Operator : EI\SJ
 Sample : K1011-14
 Misc :
 ALS Vial : 4 Sample Multiplier: 1

Instrument :
 ECD_S
 ClientSampled :
 OR-02-013119-A

Integration File signal 1: autoint1.e
 Integration File signal 2: autoint2.e
 Quant Time: Feb 05 13:24:50 2019
 Quant Method : Z:\pestpcbsrv\HPCHEM1\ECD_S\Method\PS012819.M
 Quant Title : 8080.M
 QLast Update : Tue Jan 29 06:11:45 2019
 Response via : Initial Calibration
 Integrator: ChemStation

Volume Inj. : 2 µl
 Signal #1 Phase : Rtx-CLPesticides Signal #2 Phase: Rtx-CLPesticides2
 Signal #1 Info : 30M x 0.32mm x 0.5 Signal #2 Info : 30M x 0.32mm x 0.25µm

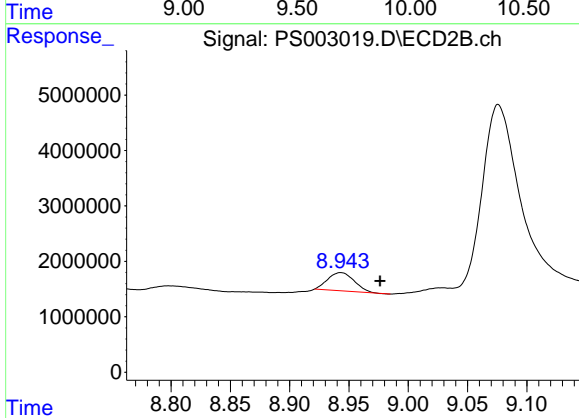




#2 3,5-DICHLORO BENZOIC ACID

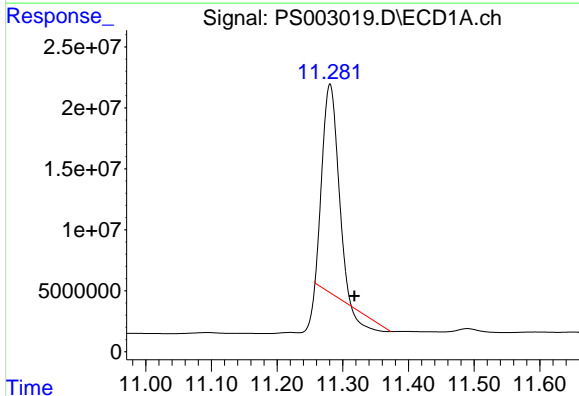
R.T.: 0.000 min
 Exp R.T.: 9.745 min
 Response: 0
 Conc: N.D.

Instrument :
 ECD_S
 ClientSampleId :
 OR-02-013119-A



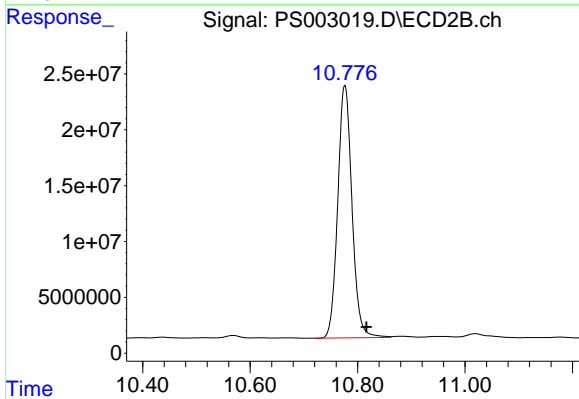
#2 3,5-DICHLORO BENZOIC ACID

R.T.: 8.943 min
 Delta R.T.: -0.033 min
 Response: 5077305
 Conc: 9.01 ng/ml



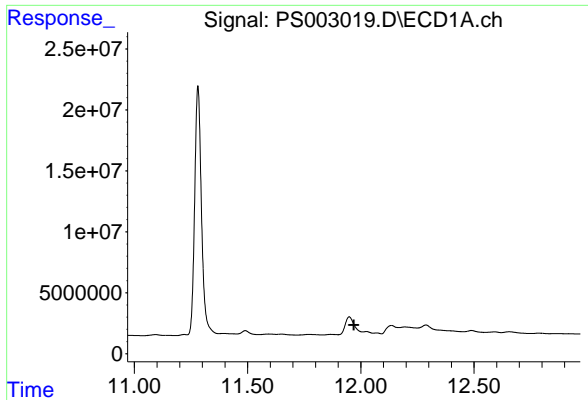
#4 2,4-DCAA

R.T.: 11.281 min
 Delta R.T.: -0.037 min
 Response: 266825807
 Conc: 702.84 ng/ml



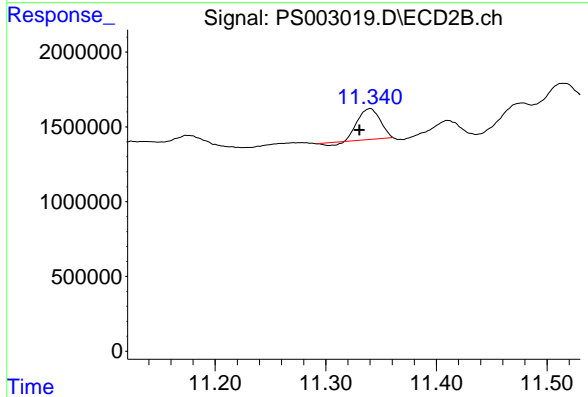
#4 2,4-DCAA

R.T.: 10.776 min
 Delta R.T.: -0.040 min
 Response: 416659523
 Conc: 974.54 ng/ml

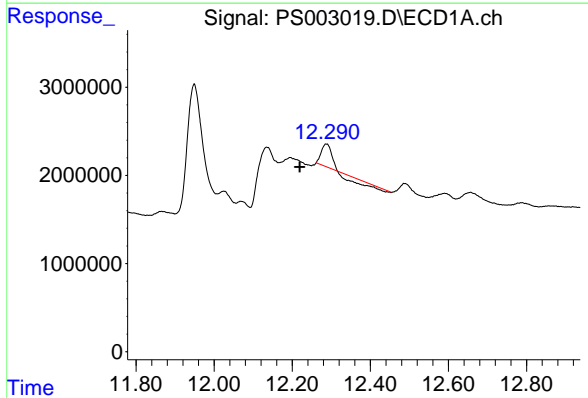


#6 MCPP
 R.T.: 0.000 min
 Exp R.T.: 11.969 min
 Response: 0
 Conc: N.D.

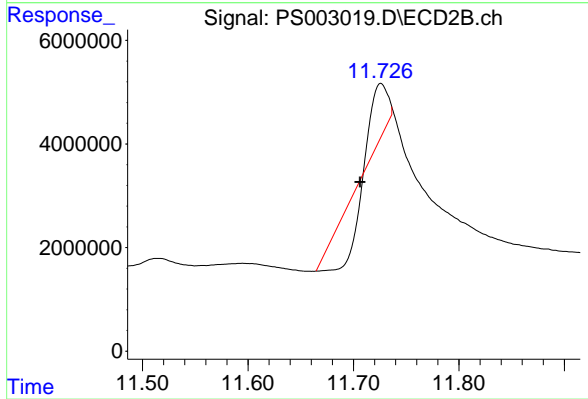
Instrument :
 ECD_S
 ClientSampleId :
 OR-02-013119-A



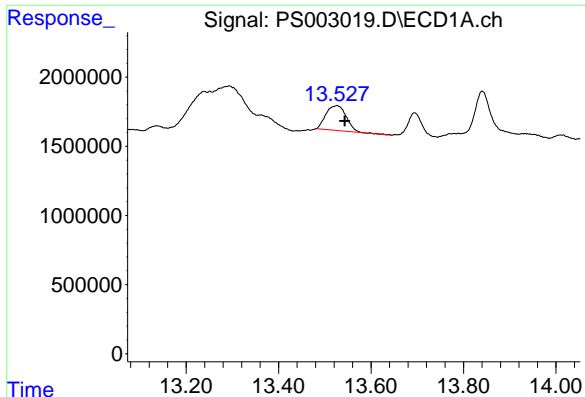
#6 MCPP
 R.T.: 11.340 min
 Delta R.T.: 0.009 min
 Response: 2857036
 Conc: 2.59 ug/ml



#7 MCPA
 R.T.: 12.288 min
 Delta R.T.: 0.068 min
 Response: 1894581
 Conc: 1.07 ug/ml



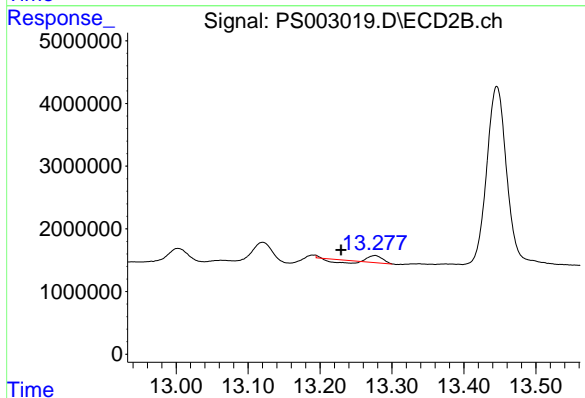
#7 MCPA
 R.T.: 11.726 min
 Delta R.T.: 0.020 min
 Response: 708971
 Conc: 0.45 ug/ml



#10 Pentachlorophenol

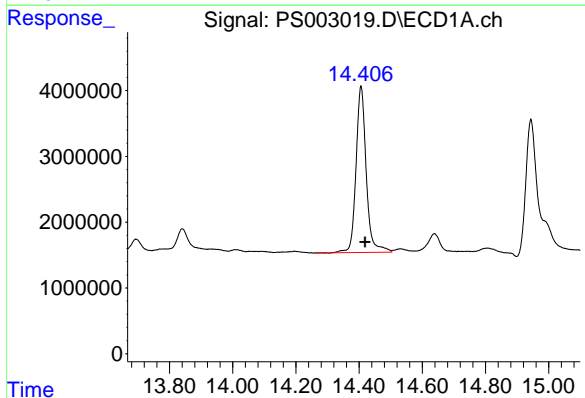
R.T.: 13.526 min
 Delta R.T.: -0.017 min
 Response: 5480838
 Conc: 0.85 ng/ml

Instrument :
 ECD_S
 ClientSampleId :
 OR-02-013119-A



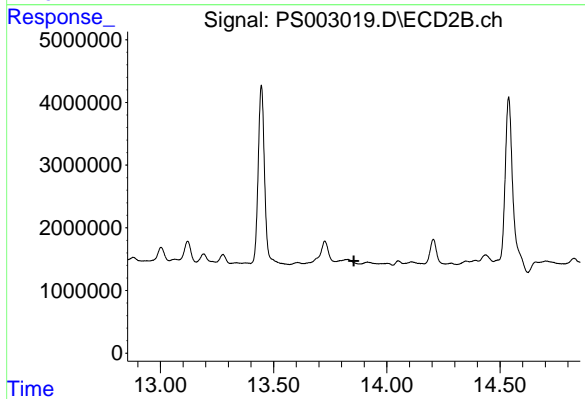
#10 Pentachlorophenol

R.T.: 13.276 min
 Delta R.T.: 0.047 min
 Response: 629714
 Conc: 0.10 ng/ml



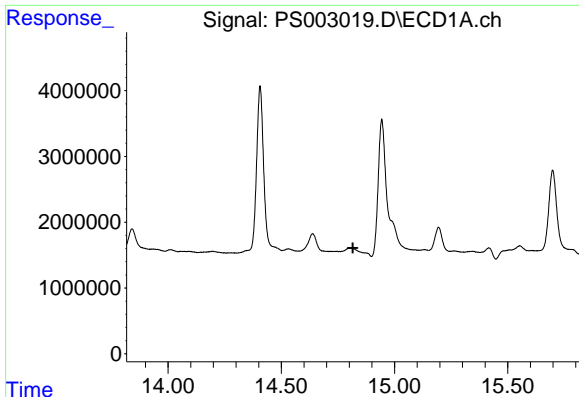
#11 2,4,5-TP (SILVEX)

R.T.: 14.406 min
 Delta R.T.: -0.013 min
 Response: 56768107
 Conc: 22.54 ng/ml



#11 2,4,5-TP (SILVEX)

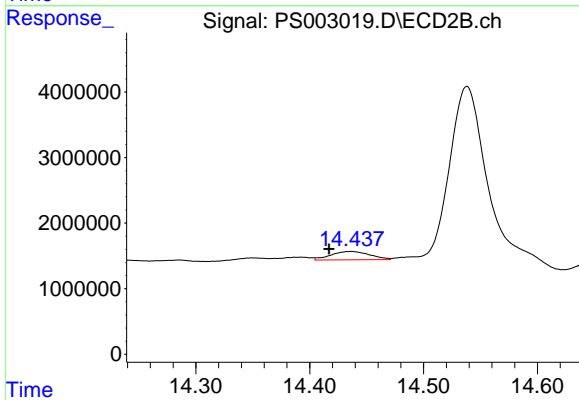
R.T.: 0.000 min
 Exp R.T. : 13.854 min
 Response: 0
 Conc: N.D.



#12 2,4,5-T

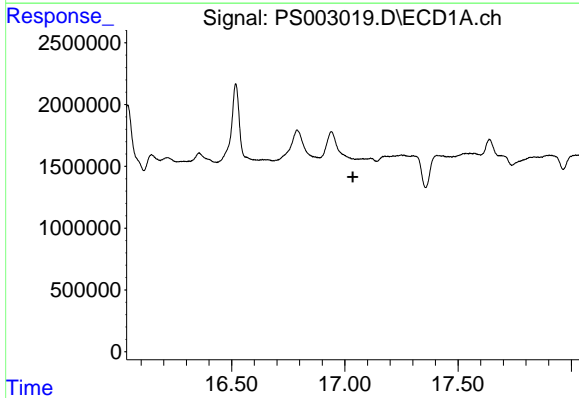
R.T.: 0.000 min
 Exp R.T. : 14.817 min
 Response: 0
 Conc: N.D.

Instrument :
 ECD_S
 ClientSampleId :
 OR-02-013119-A



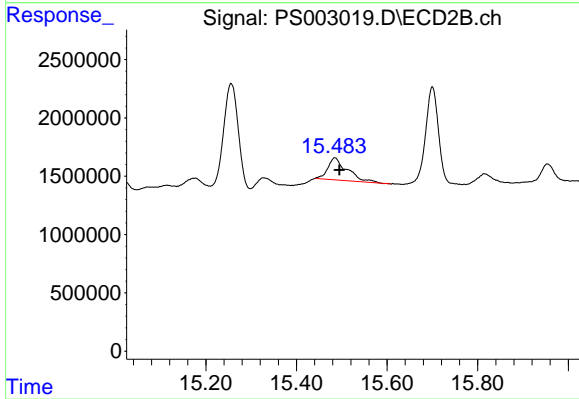
#12 2,4,5-T

R.T.: 14.436 min
 Delta R.T.: 0.019 min
 Response: 3047774
 Conc: 1.59 ng/ml



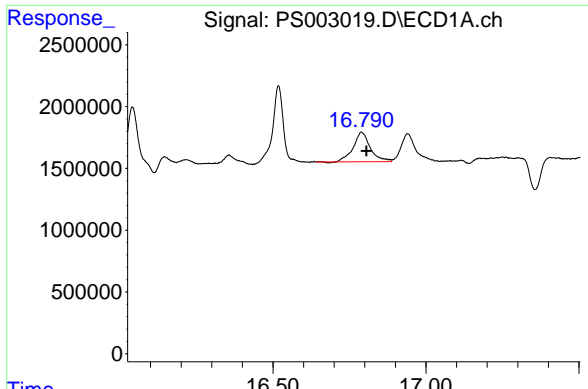
#14 DINOSEB

R.T.: 0.000 min
 Exp R.T. : 17.035 min
 Response: 0
 Conc: N.D.



#14 DINOSEB

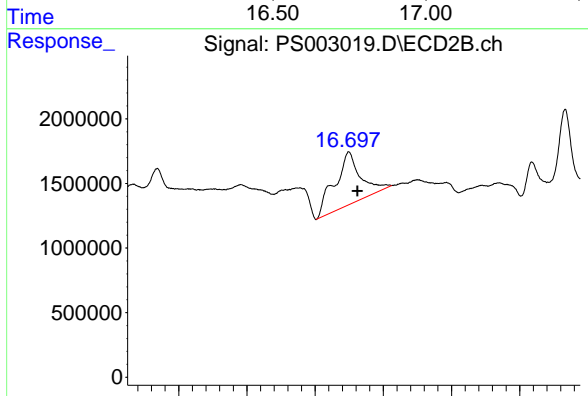
R.T.: 15.485 min
 Delta R.T.: -0.010 min
 Response: 5595286
 Conc: 3.19 ng/ml



#15 Picloram

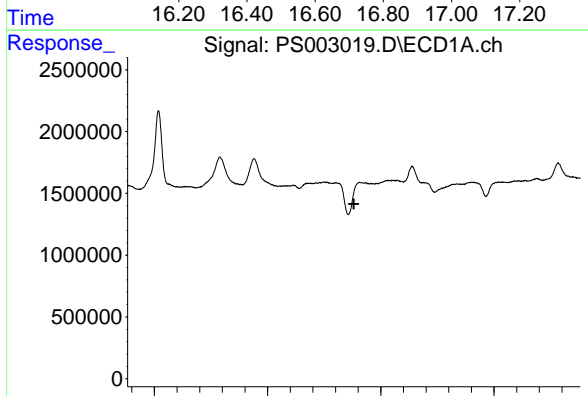
R.T.: 16.789 min
 Delta R.T.: -0.017 min
 Response: 9299615
 Conc: 2.94 ng/ml

Instrument :
 ECD_S
 ClientSampleId :
 OR-02-013119-A



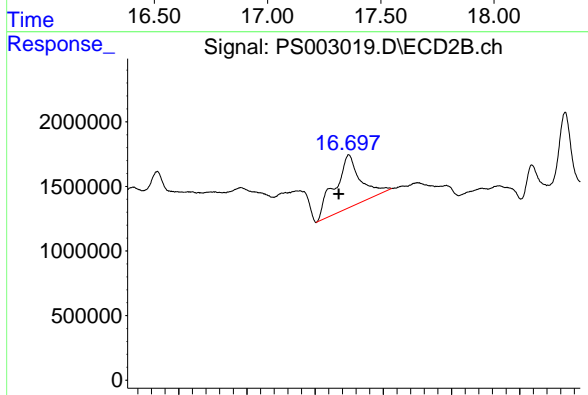
#15 Picloram

R.T.: 16.699 min
 Delta R.T.: -0.026 min
 Response: 21376569
 Conc: 7.11 ng/ml



#16 DCPA

R.T.: 17.407 min
 Delta R.T.: 0.025 min
 Response: -3347252
 Conc: N.D.



#16 DCPA

R.T.: 16.699 min
 Delta R.T.: 0.029 min
 Response: 21376569
 Conc: 6.90 ng/ml