

Data Path : Z:\pestpcbsrv\HPCHEM1\ECD_S\Data\PS020519\
 Data File : PS003025.D
 Signal(s) : Signal #1: ECD1A.ch Signal #2: ECD2B.ch
 Acq On : 05 Feb 2019 14:28
 Operator : EI\SJ
 Sample : PB116800BL
 Misc :
 ALS Vial : 9 Sample Multiplier: 1

Instrument :
 ECD_S
 ClientSampleId :
 PB116800BL

Integration File signal 1: autoint1.e
 Integration File signal 2: autoint2.e
 Quant Time: Feb 06 00:12:36 2019
 Quant Method : Z:\pestpcbsrv\HPCHEM1\ECD_S\Method\PS012819.M
 Quant Title : 8080.M
 QLast Update : Tue Jan 29 06:11:45 2019
 Response via : Initial Calibration
 Integrator: ChemStation

Volume Inj. : 2 µl
 Signal #1 Phase : Rtx-CLPesticides Signal #2 Phase: Rtx-CLPesticides2
 Signal #1 Info : 30M x 0.32mm x0.5 Signal #2 Info : 30M x 0.32mm x 0.25µm

Compound	RT#1	RT#2	Resp#1	Resp#2	ng/ml	ng/ml

System Monitoring Compounds						
4) S 2,4-DCAA	11.303	10.802	92016694	94149053	242.378	220.208
Target Compounds						
1) T Dalapon	2.820	2.304	6693730	103.0E6	12.134	192.105 #
2) T 3,5-DICHL...	0.000	8.968	0	8518561	N.D.	15.115 #
6) T MCPP	11.973	0.000	18569868	0	15.499	N.D. #
14) T DINOSEB	0.000	15.504	0	5896711	N.D.	3.364 #
15) T Picloram	0.000	16.726	0	9159178	N.D.	3.047 #
16) T DCPA	0.000	16.726	0	9159178	N.D.	2.957 #

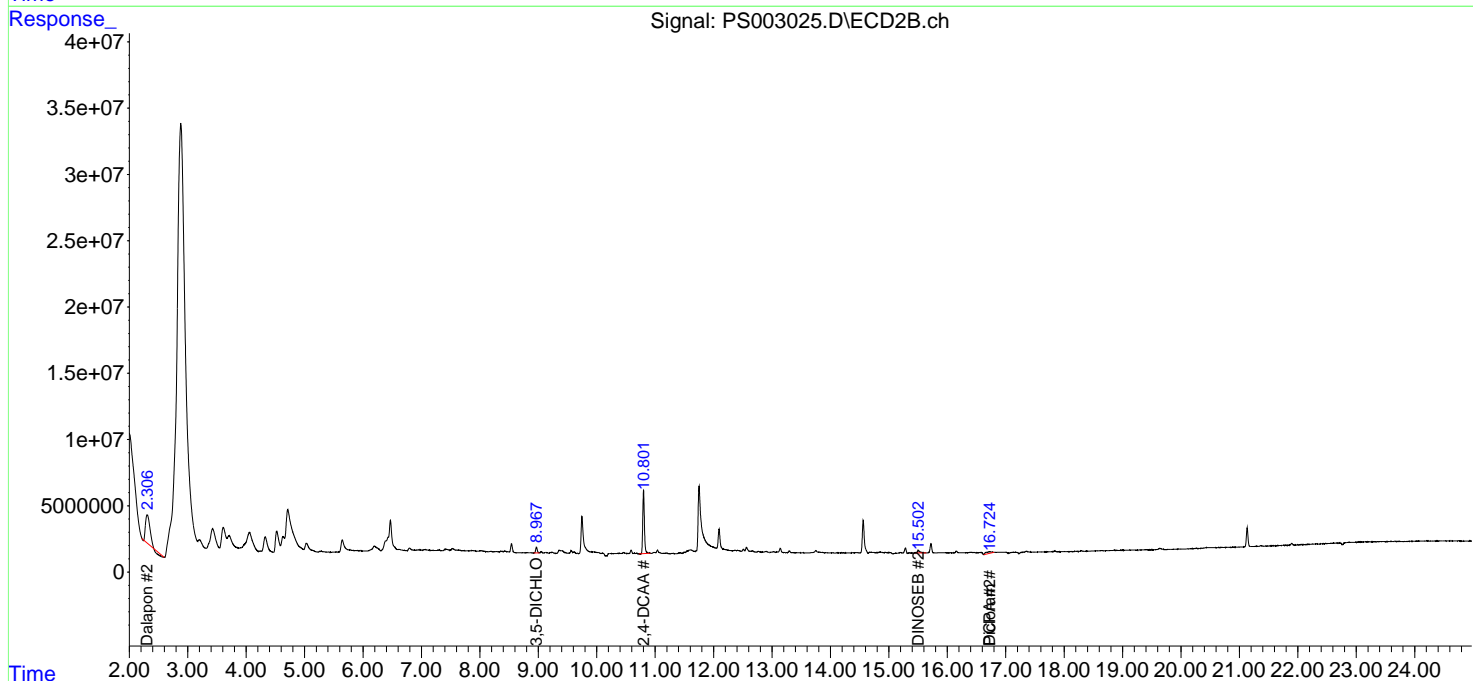
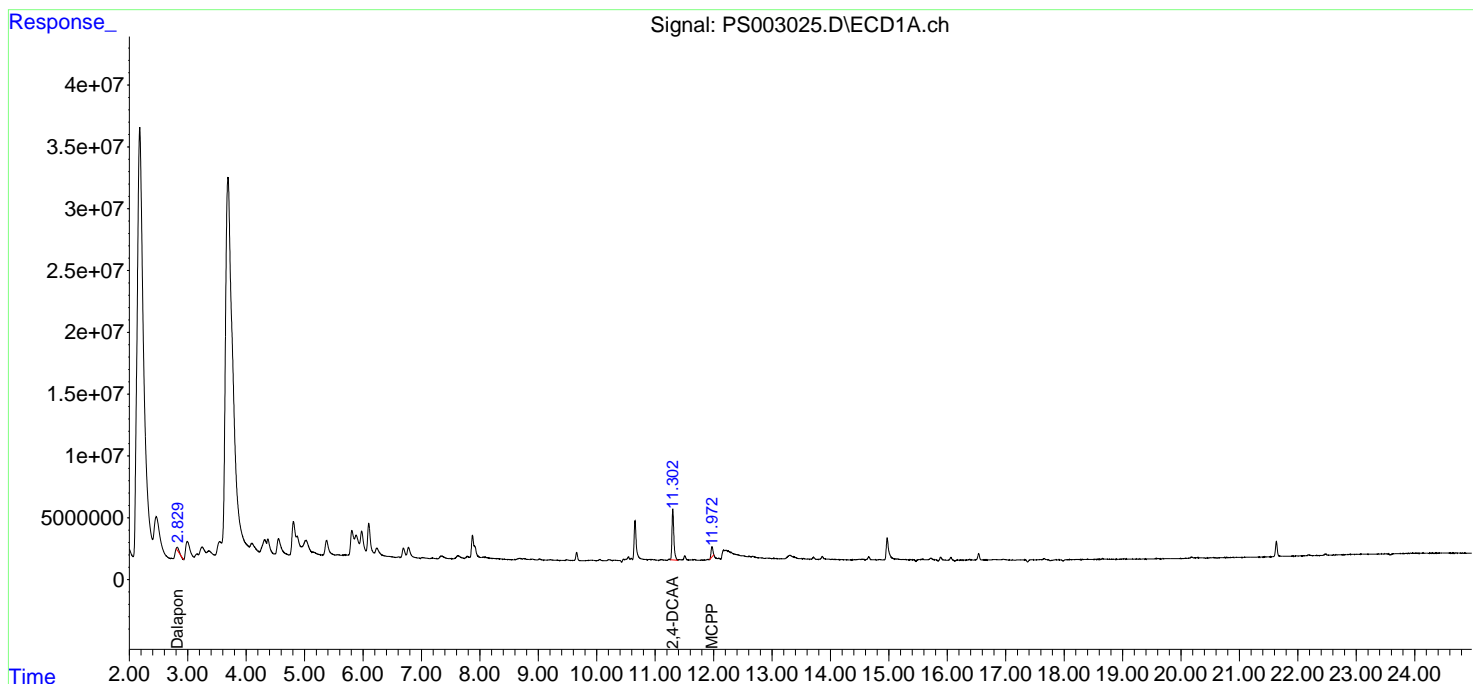
(f)=RT Delta > 1/2 Window (#)=Amounts differ by > 25% (m)=manual int.

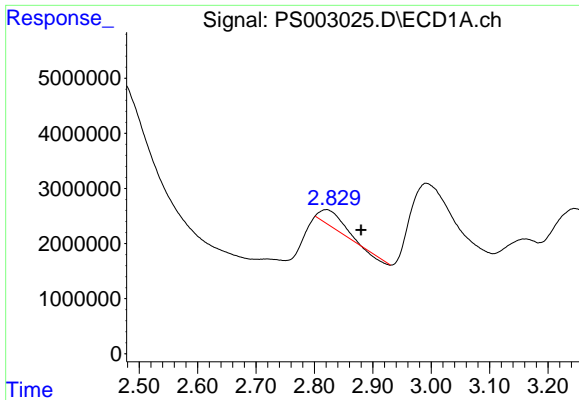
Data Path : Z:\pestpcbsrv\HPCHEM1\ECD_S\Data\PS020519\
 Data File : PS003025.D
 Signal(s) : Signal #1: ECD1A.ch Signal #2: ECD2B.ch
 Acq On : 05 Feb 2019 14:28
 Operator : EI\SJ
 Sample : PB116800BL
 Misc :
 ALS Vial : 9 Sample Multiplier: 1

Instrument :
 ECD_S
 ClientSampled :
 PB116800BL

Integration File signal 1: autoint1.e
 Integration File signal 2: autoint2.e
 Quant Time: Feb 06 00:12:36 2019
 Quant Method : Z:\pestpcbsrv\HPCHEM1\ECD_S\Method\PS012819.M
 Quant Title : 8080.M
 QLast Update : Tue Jan 29 06:11:45 2019
 Response via : Initial Calibration
 Integrator: ChemStation

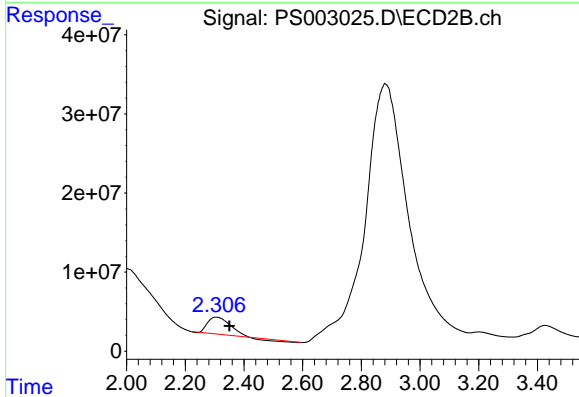
Volume Inj. : 2 µl
 Signal #1 Phase : Rtx-CLPesticides Signal #2 Phase: Rtx-CLPesticides2
 Signal #1 Info : 30M x 0.32mm x 0.5 Signal #2 Info : 30M x 0.32mm x 0.25µm



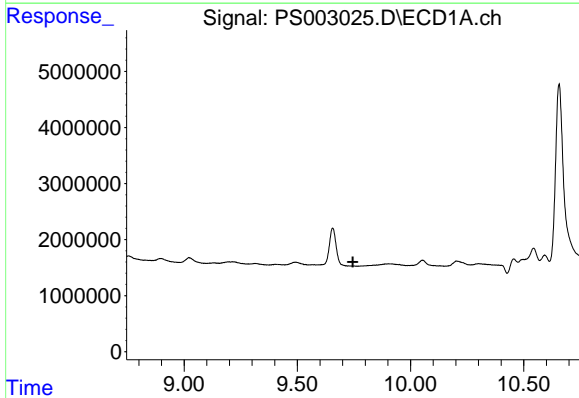


#1 Dalapon
 R.T.: 2.820 min
 Delta R.T.: -0.060 min
 Response: 6693730
 Conc: 12.13 ng/ml

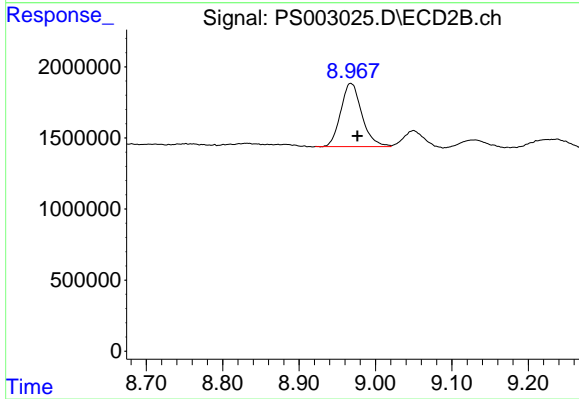
Instrument :
 ECD_S
 ClientSampled :
 PB116800BL



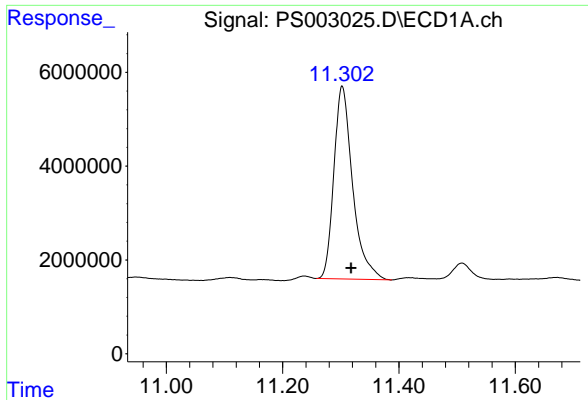
#1 Dalapon
 R.T.: 2.304 min
 Delta R.T.: -0.046 min
 Response: 102953029
 Conc: 192.10 ng/ml



#2 3,5-DICHLOROBENZOIC ACID
 R.T.: 0.000 min
 Exp R.T. : 9.745 min
 Response: 0
 Conc: N.D.

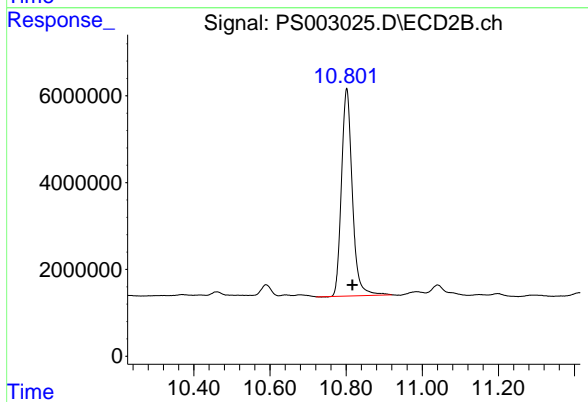


#2 3,5-DICHLOROBENZOIC ACID
 R.T.: 8.968 min
 Delta R.T.: -0.008 min
 Response: 8518561
 Conc: 15.12 ng/ml

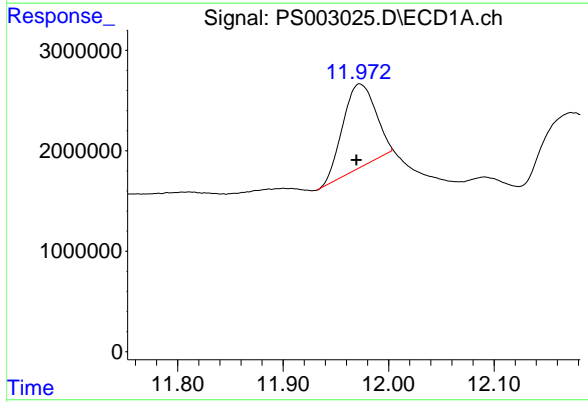


#4 2,4-DCAA
 R.T.: 11.303 min
 Delta R.T.: -0.015 min
 Response: 92016694
 Conc: 242.38 ng/ml

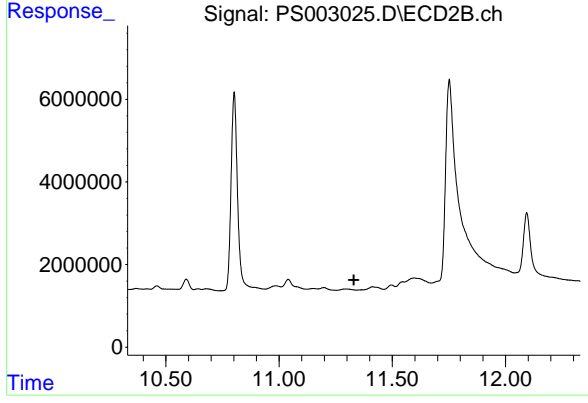
Instrument :
 ECD_S
 ClientSampleId :
 PB116800BL



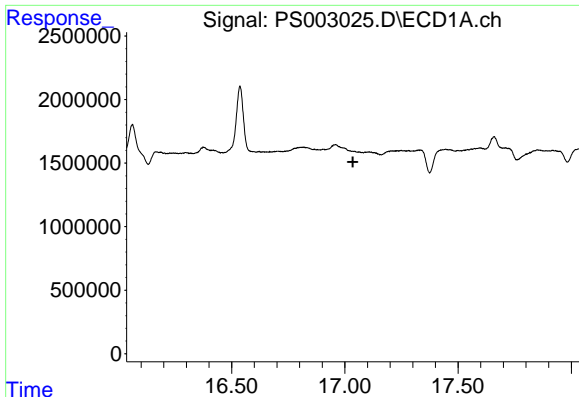
#4 2,4-DCAA
 R.T.: 10.802 min
 Delta R.T.: -0.015 min
 Response: 94149053
 Conc: 220.21 ng/ml



#6 MCP
 R.T.: 11.973 min
 Delta R.T.: 0.004 min
 Response: 18569868
 Conc: 15.50 ug/ml



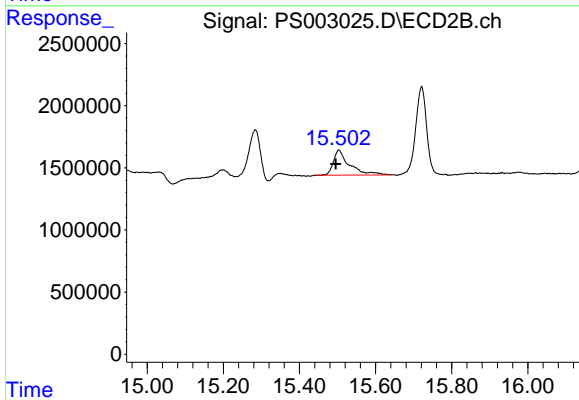
#6 MCP
 R.T.: 0.000 min
 Exp R.T. : 11.330 min
 Response: 0
 Conc: N.D.



#14 DINOSEB

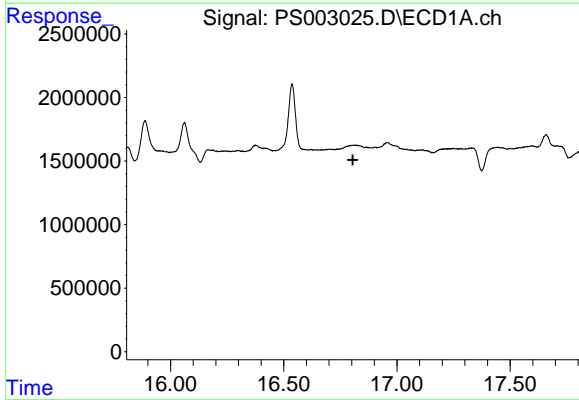
R.T.: 0.000 min
 Exp R.T. : 17.035 min
 Response: 0
 Conc: N.D.

Instrument :
 ECD_S
 ClientSampleId :
 PB116800BL



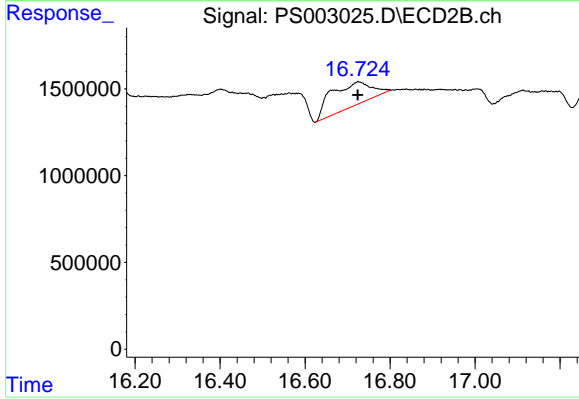
#14 DINOSEB

R.T.: 15.504 min
 Delta R.T.: 0.009 min
 Response: 5896711
 Conc: 3.36 ng/ml



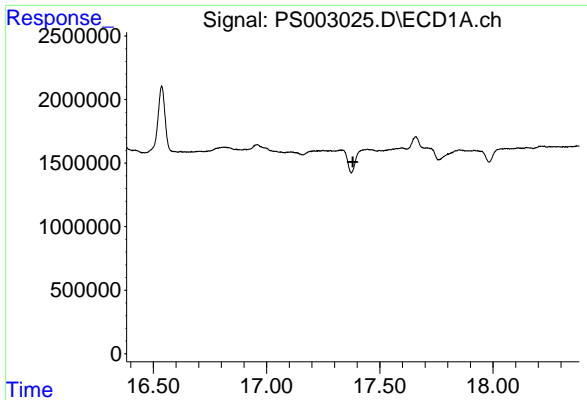
#15 Picloram

R.T.: 0.000 min
 Exp R.T. : 16.806 min
 Response: 0
 Conc: N.D.



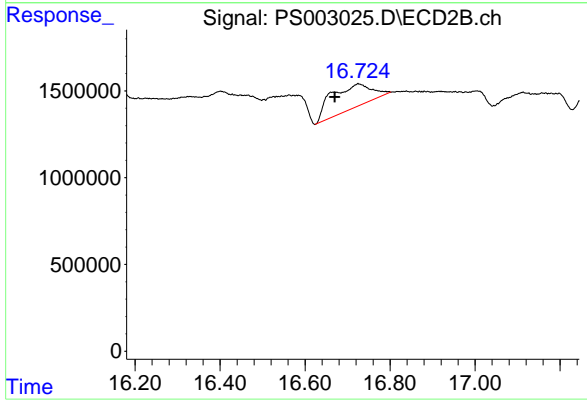
#15 Picloram

R.T.: 16.726 min
 Delta R.T.: 0.001 min
 Response: 9159178
 Conc: 3.05 ng/ml



#16 DCPA
 R.T.: 0.000 min
 Exp R.T.: 17.382 min
 Response: 0
 Conc: N.D.

Instrument :
 ECD_S
ClientSampled :
 PB116800BL



#16 DCPA
 R.T.: 16.726 min
 Delta R.T.: 0.056 min
 Response: 9159178
 Conc: 2.96 ng/ml