

Data Path : Z:\pestpcbsrv\HPCHEM1\ECD_S\Data\PS020521\
 Data File : PS013946.D
 Signal(s) : Signal #1: ECD1A.ch Signal #2: ECD2B.ch
 Acq On : 05 Feb 2021 15:08
 Operator : DD\AJ
 Sample : PB134471BS
 Misc :
 ALS Vial : 5 Sample Multiplier: 1

Instrument :
 ECD_S
 ClientSampleId :

Integration File signal 1: autoint1.e
 Integration File signal 2: autoint2.e
 Quant Time: Feb 05 17:41:25 2021
 Quant Method : Z:\pestpcbsrv\HPCHEM1\ECD_S\Method\PS012721.M
 Quant Title : 8080.M
 QLast Update : Thu Jan 28 01:00:30 2021
 Response via : Initial Calibration
 Integrator: ChemStation

Volume Inj. : 2 µl
 Signal #1 Phase : Rtx-CLPesticides Signal #2 Phase: Rtx-CLPesticides2
 Signal #1 Info : 30M x 0.32mm x0.5 Signal #2 Info : 30M x 0.32mm x 0.25µm

	Compound	RT#1	RT#2	Resp#1	Resp#2	ng/ml	ng/ml

System Monitoring Compounds							
4) S	2,4-DCAA	7.206	6.903	536.3E6	261.1E6	498.529	676.762 #
Target Compounds							
1) T	Dalapon	3.025	2.619	580.5E6	339.8E6	465.077	660.805 #
2) T	3,5-DICHL...	6.422	6.060	679.0E6	282.8E6	456.934	465.731
3) T	4-Nitroph...	7.041	6.519	233.1E6	108.7E6	429.006	432.359
5) T	DICAMBA	7.395	7.069	1888.1E6	837.1E6	439.126	507.984
6) T	MCPD	7.561	7.162	158.8E6	69491078	50.314	51.740
7) T	MCPA	7.709	7.375	195.5E6	118.9E6	43.188	61.355 #
8) T	DICHLORPROP	8.086	7.695	485.5E6	223.1E6	446.633	524.446
9) T	2,4-D	8.319	7.992	546.5E6	262.2E6	445.039	491.844
10) T	Pentachlo...	8.625	8.415	7535.1E6	3059.5E6	475.809	549.219
11) T	2,4,5-TP ...	9.172	8.775	3019.2E6	1295.7E6	480.847	564.431
12) T	2,4,5-T	9.459	9.157	2961.9E6	1178.4E6	459.840	529.206
13) T	2,4-DB	10.013	9.664	375.4E6	154.7E6	340.093	517.255 #
14) T	DINOSEB	11.165	9.992	2214.2E6	808.9E6	436.903	495.101
15) T	Picloram	11.005	10.992	2937.4E6	1403.4E6	345.937	411.243
16) T	DCPA	11.433	10.919	3415.0E6	1585.1E6	422.446	529.087 #

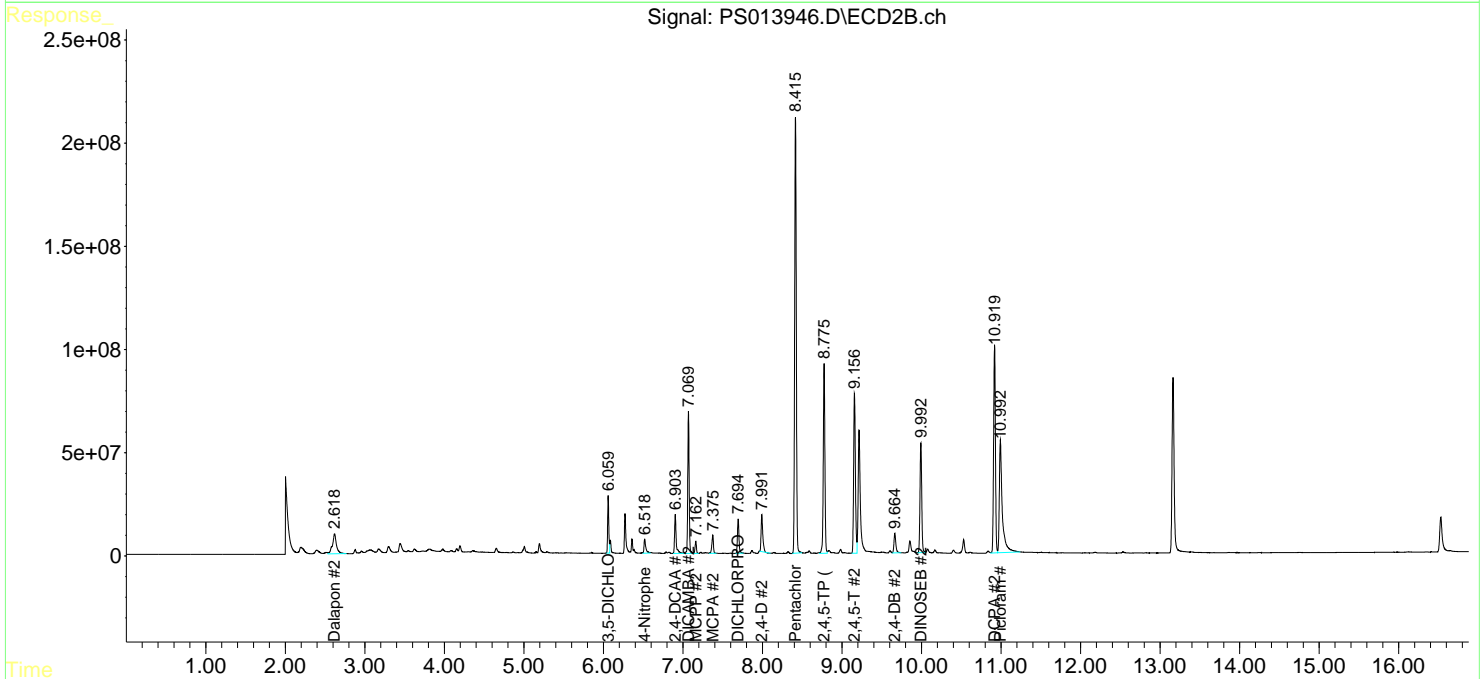
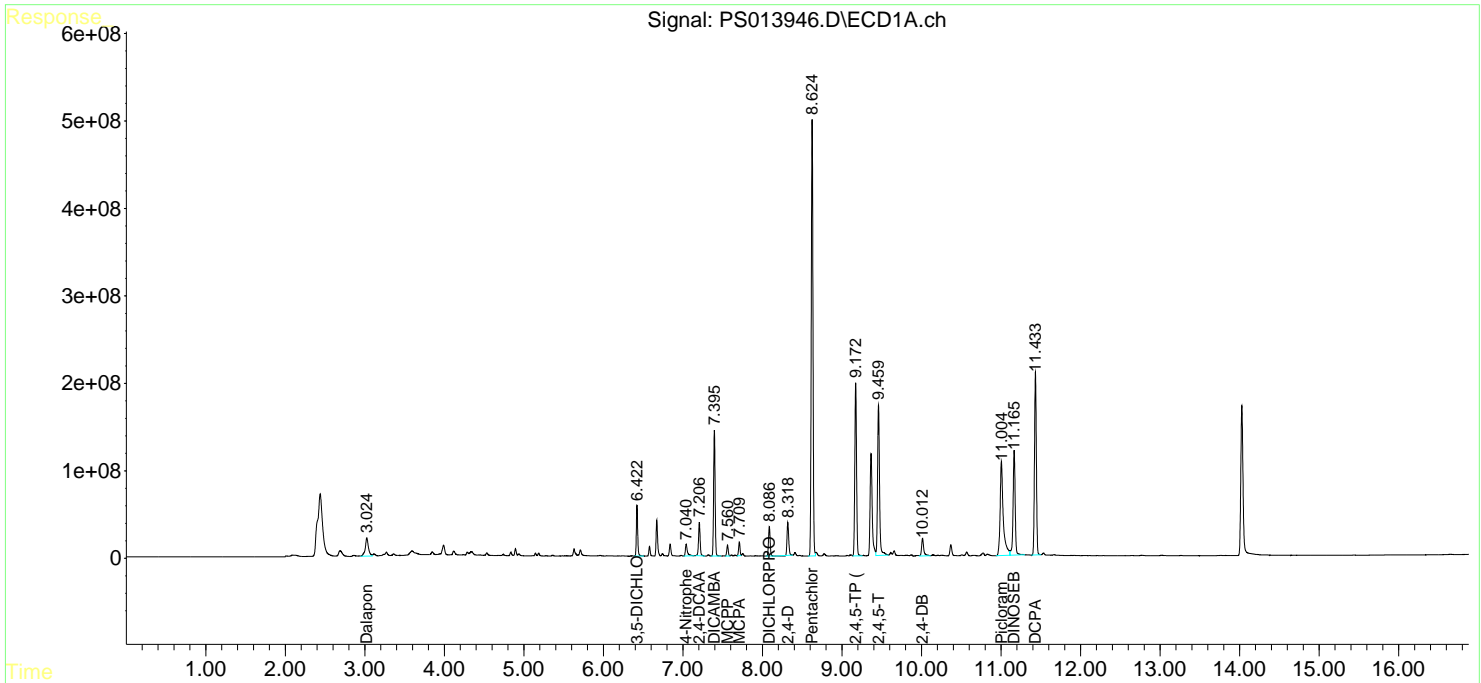
(f)=RT Delta > 1/2 Window (#)=Amounts differ by > 25% (m)=manual int.

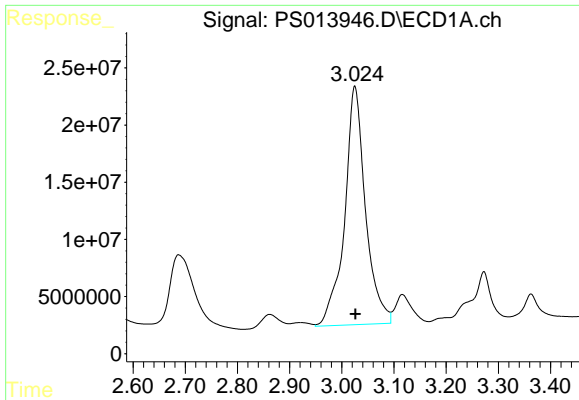
Data Path : Z:\pestpcbsrv\HPCHEM1\ECD_S\Data\PS020521\
 Data File : PS013946.D
 Signal(s) : Signal #1: ECD1A.ch Signal #2: ECD2B.ch
 Acq On : 05 Feb 2021 15:08
 Operator : DD\AJ
 Sample : PB134471BS
 Misc :
 ALS Vial : 5 Sample Multiplier: 1

Instrument :
 ECD_S
 ClientSampled :

Integration File signal 1: autoint1.e
 Integration File signal 2: autoint2.e
 Quant Time: Feb 05 17:41:25 2021
 Quant Method : Z:\pestpcbsrv\HPCHEM1\ECD_S\Method\PS012721.M
 Quant Title : 8080.M
 QLast Update : Thu Jan 28 01:00:30 2021
 Response via : Initial Calibration
 Integrator: ChemStation

Volume Inj. : 2 µl
 Signal #1 Phase : Rtx-CLPesticides Signal #2 Phase: Rtx-CLPesticides2
 Signal #1 Info : 30M x 0.32mm x0.5 Signal #2 Info : 30M x 0.32mm x 0.25µm

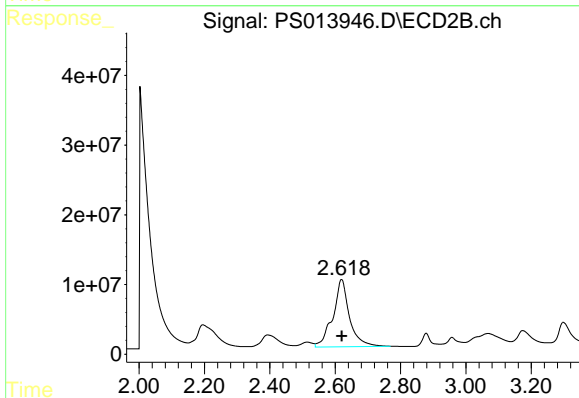




#1 Dalapon

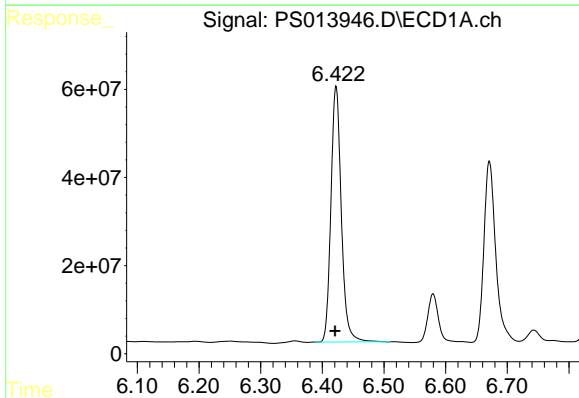
R.T.: 3.025 min
 Delta R.T.: -0.001 min
 Response: 580452503
 Conc: 465.08 ng/ml

Instrument :
 ECD_S
 ClientSampled :



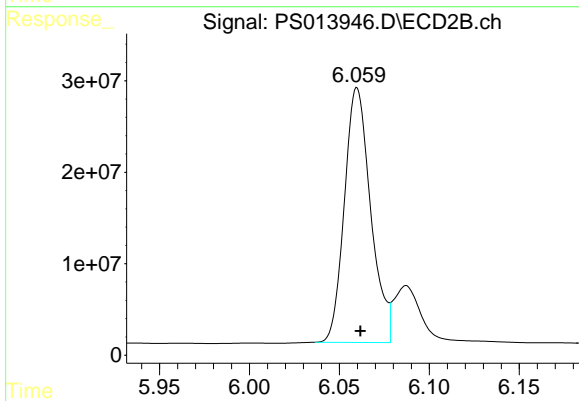
#1 Dalapon

R.T.: 2.619 min
 Delta R.T.: -0.001 min
 Response: 339760450
 Conc: 660.81 ng/ml



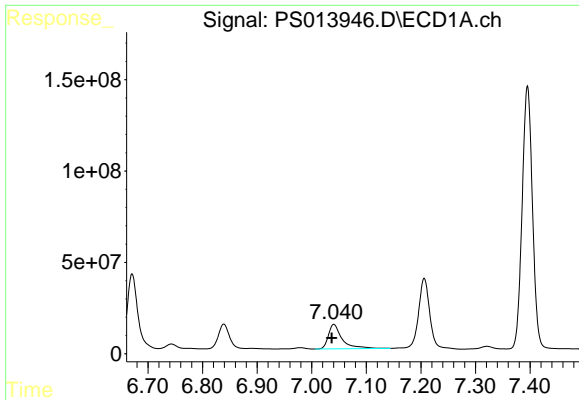
#2 3,5-DICHLOROBENZOIC ACID

R.T.: 6.422 min
 Delta R.T.: 0.002 min
 Response: 679021369
 Conc: 456.93 ng/ml



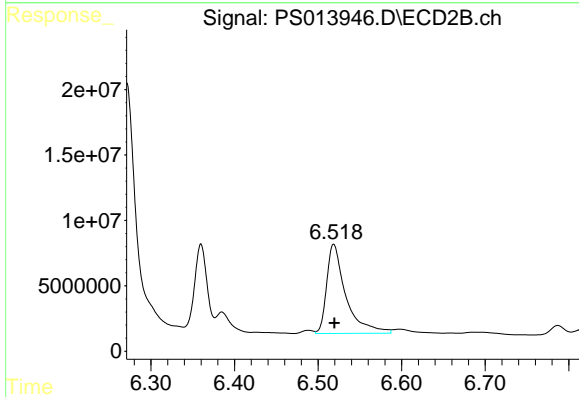
#2 3,5-DICHLOROBENZOIC ACID

R.T.: 6.060 min
 Delta R.T.: -0.002 min
 Response: 282766227
 Conc: 465.73 ng/ml

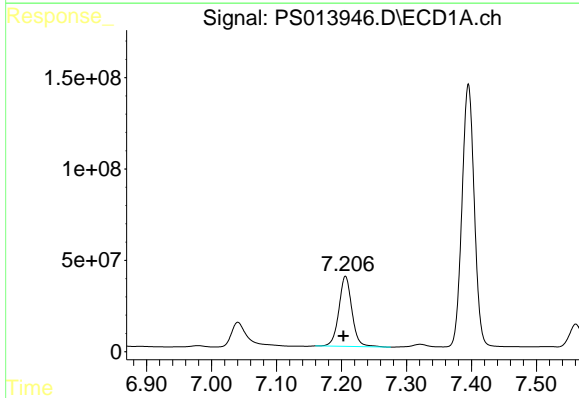


#3 4-Nitrophenol
 R.T.: 7.041 min
 Delta R.T.: 0.004 min
 Response: 233114242
 Conc: 429.01 ng/ml

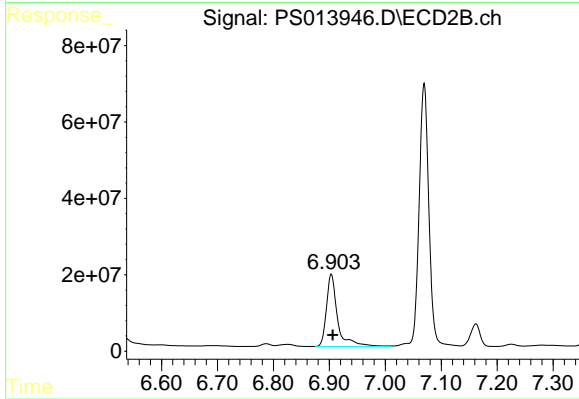
Instrument :
 ECD_S
 ClientSampled :



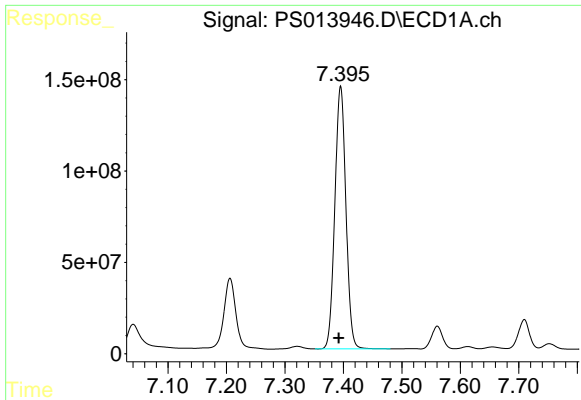
#3 4-Nitrophenol
 R.T.: 6.519 min
 Delta R.T.: 0.000 min
 Response: 108727246
 Conc: 432.36 ng/ml



#4 2,4-DCAA
 R.T.: 7.206 min
 Delta R.T.: 0.003 min
 Response: 536344918
 Conc: 498.53 ng/ml



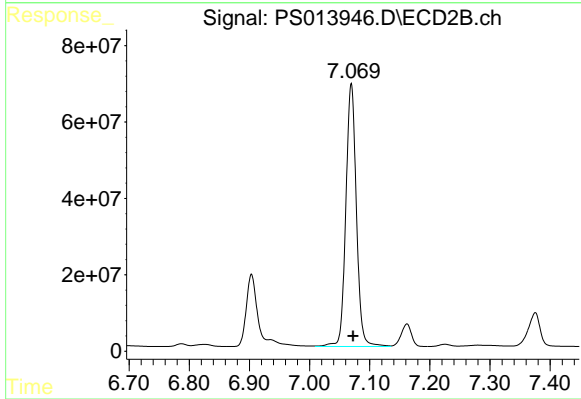
#4 2,4-DCAA
 R.T.: 6.903 min
 Delta R.T.: -0.003 min
 Response: 261063186
 Conc: 676.76 ng/ml



#5 DICAMBA

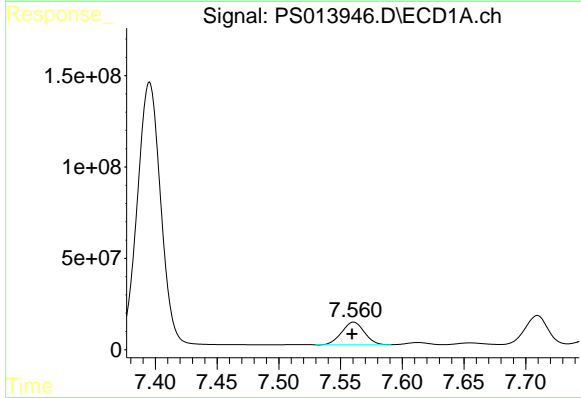
R.T.: 7.395 min
 Delta R.T.: 0.003 min
 Response: 1888138048
 Conc: 439.13 ng/ml

Instrument :
 ECD_S
 ClientSampled :



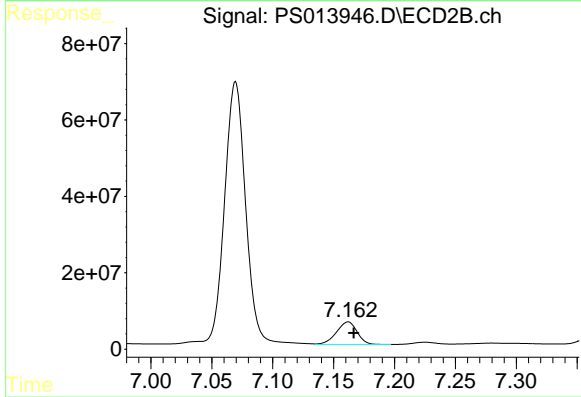
#5 DICAMBA

R.T.: 7.069 min
 Delta R.T.: -0.003 min
 Response: 837132804
 Conc: 507.98 ng/ml



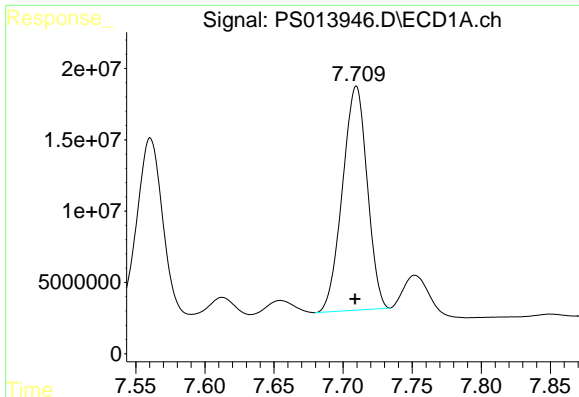
#6 MCPP

R.T.: 7.561 min
 Delta R.T.: 0.001 min
 Response: 158773221
 Conc: 50.31 ug/ml



#6 MCPP

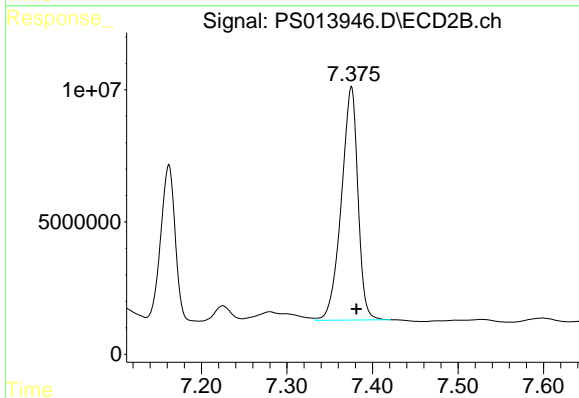
R.T.: 7.162 min
 Delta R.T.: -0.005 min
 Response: 69491078
 Conc: 51.74 ug/ml



#7 MCPA

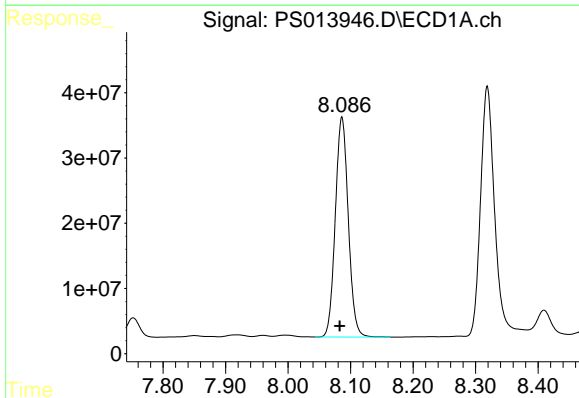
R.T.: 7.709 min
Delta R.T.: 0.000 min
Response: 195460290
Conc: 43.19 ug/ml

Instrument :
ECD_S
ClientSampleId :



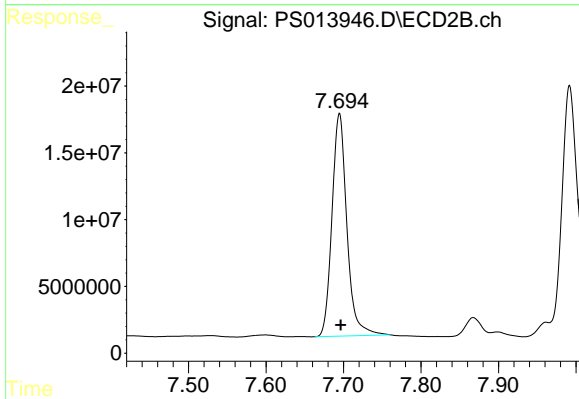
#7 MCPA

R.T.: 7.375 min
Delta R.T.: -0.006 min
Response: 118938939
Conc: 61.35 ug/ml



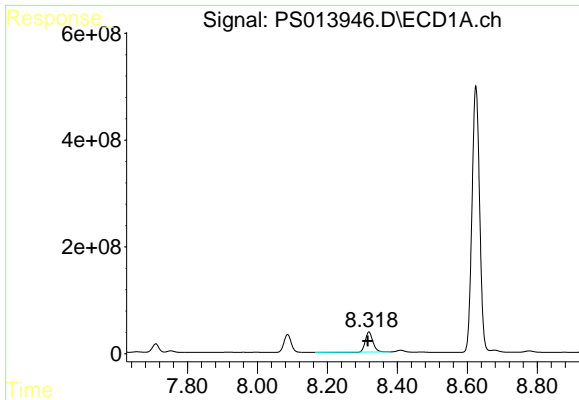
#8 DICHLORPROP

R.T.: 8.086 min
Delta R.T.: 0.003 min
Response: 485456046
Conc: 446.63 ng/ml



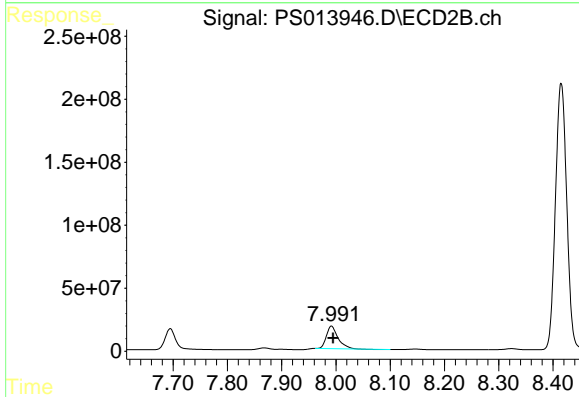
#8 DICHLORPROP

R.T.: 7.695 min
Delta R.T.: -0.002 min
Response: 223140241
Conc: 524.45 ng/ml

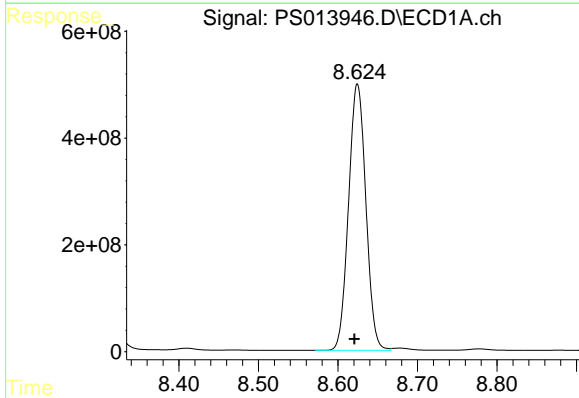


#9 2,4-D
 R.T.: 8.319 min
 Delta R.T.: 0.004 min
 Response: 546456131
 Conc: 445.04 ng/ml

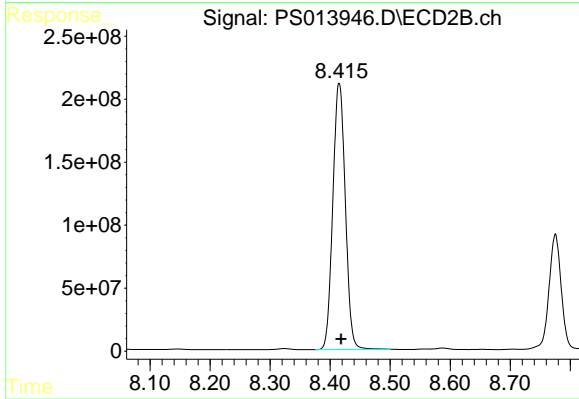
Instrument :
 ECD_S
 ClientSampleId :



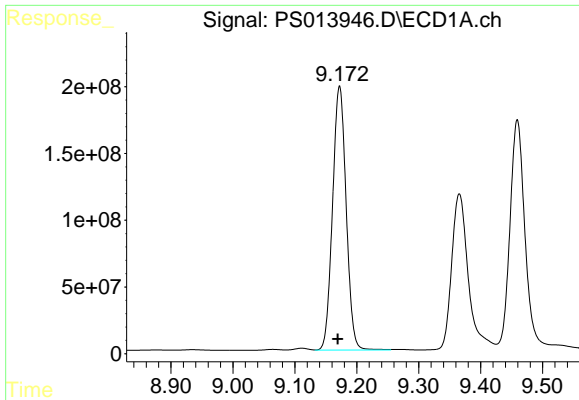
#9 2,4-D
 R.T.: 7.992 min
 Delta R.T.: -0.003 min
 Response: 262176458
 Conc: 491.84 ng/ml



#10 Pentachlorophenol
 R.T.: 8.625 min
 Delta R.T.: 0.004 min
 Response: 7535097891
 Conc: 475.81 ng/ml

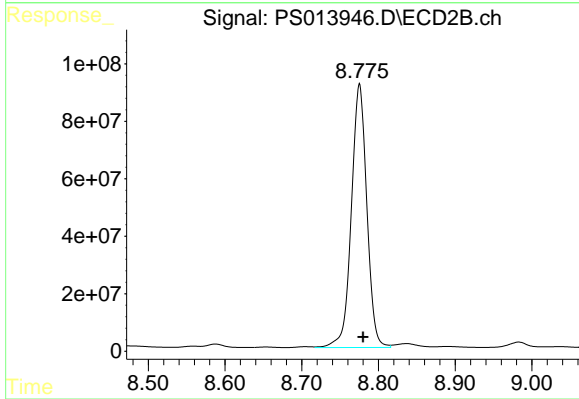


#10 Pentachlorophenol
 R.T.: 8.415 min
 Delta R.T.: -0.003 min
 Response: 3059529952
 Conc: 549.22 ng/ml

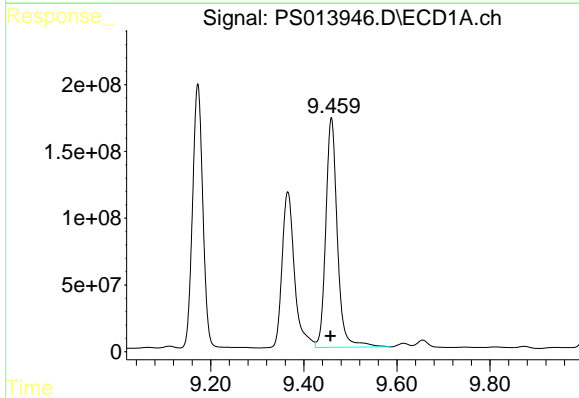


#11 2,4,5-TP (SILVEX)
 R.T.: 9.172 min
 Delta R.T.: 0.003 min
 Response: 3019193037
 Conc: 480.85 ng/ml

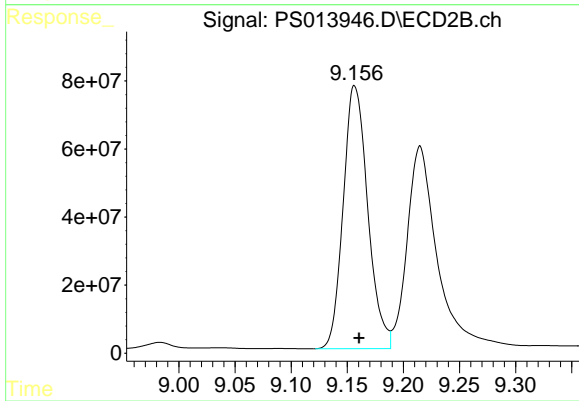
Instrument :
 ECD_S
 ClientSampleId :



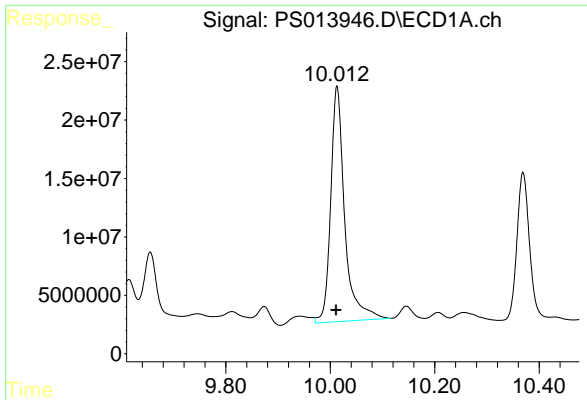
#11 2,4,5-TP (SILVEX)
 R.T.: 8.775 min
 Delta R.T.: -0.005 min
 Response: 1295660931
 Conc: 564.43 ng/ml



#12 2,4,5-T
 R.T.: 9.459 min
 Delta R.T.: 0.002 min
 Response: 2961887596
 Conc: 459.84 ng/ml



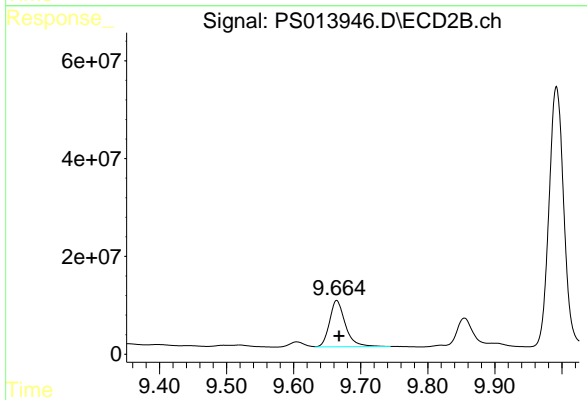
#12 2,4,5-T
 R.T.: 9.157 min
 Delta R.T.: -0.004 min
 Response: 1178408243
 Conc: 529.21 ng/ml



#13 2,4-DB

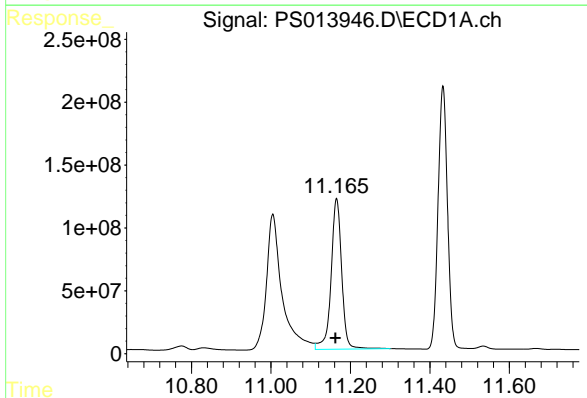
R.T.: 10.013 min
 Delta R.T.: 0.002 min
 Response: 375413976
 Conc: 340.09 ng/ml

Instrument :
 ECD_S
 ClientSampleId :



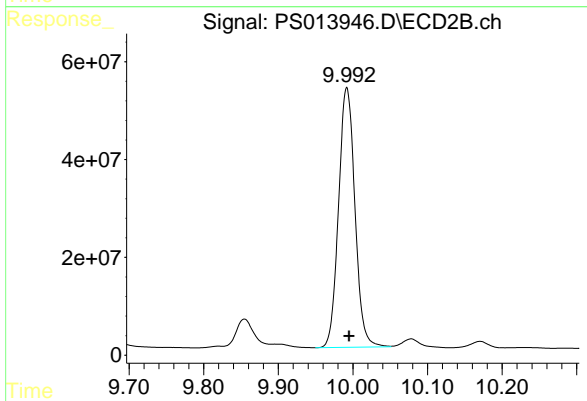
#13 2,4-DB

R.T.: 9.664 min
 Delta R.T.: -0.003 min
 Response: 154668392
 Conc: 517.25 ng/ml



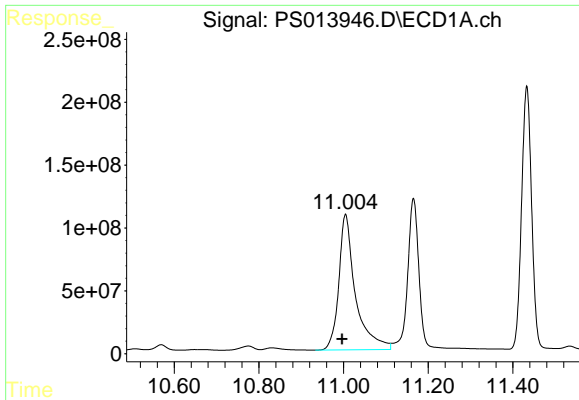
#14 DINOSEB

R.T.: 11.165 min
 Delta R.T.: 0.003 min
 Response: 2214224869
 Conc: 436.90 ng/ml



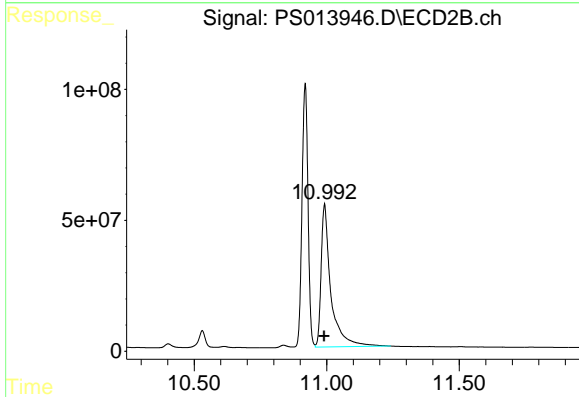
#14 DINOSEB

R.T.: 9.992 min
 Delta R.T.: -0.003 min
 Response: 808850979
 Conc: 495.10 ng/ml

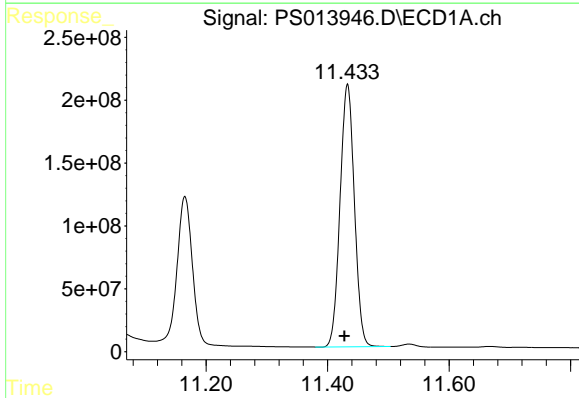


#15 Picloram
 R.T.: 11.005 min
 Delta R.T.: 0.008 min
 Response: 2937398135
 Conc: 345.94 ng/ml

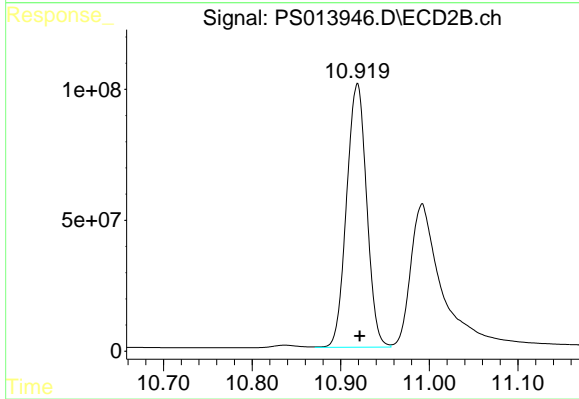
Instrument :
 ECD_S
 ClientSampled :



#15 Picloram
 R.T.: 10.992 min
 Delta R.T.: 0.002 min
 Response: 1403426145
 Conc: 411.24 ng/ml



#16 DCPA
 R.T.: 11.433 min
 Delta R.T.: 0.005 min
 Response: 3414998723
 Conc: 422.45 ng/ml



#16 DCPA
 R.T.: 10.919 min
 Delta R.T.: -0.002 min
 Response: 1585085213
 Conc: 529.09 ng/ml