

Data Path : Z:\pestpcbsrv\HPCHEM1\ECD_S\Data\PS020525\
Data File : PS029070.D
Signal(s) : Signal #1: ECD1A.ch Signal #2: ECD2B.ch
Acq On : 05 Feb 2025 08:46
Operator : AR\AJ
Sample : HEXANE
Misc :
ALS Vial : 1 Sample Multiplier: 1

Instrument :
ECD_S
ClientSampleId :
HEXANE

Integration File signal 1: autoint1.e
Integration File signal 2: autoint2.e
Quant Time: Feb 06 02:12:43 2025
Quant Method : Z:\pestpcbsrv\HPCHEM1\ECD_S\Method\PS011425.M
Quant Title : 8080.M
QLast Update : Tue Feb 04 17:44:08 2025
Response via : Initial Calibration
Integrator: ChemStation

Volume Inj. : 1 µl
Signal #1 Phase : ZB-MR1 Signal #2 Phase: ZB-MR2
Signal #1 Info : 30M x 0.32mm x0.5 Signal #2 Info : 30M x 0.32mm x 0.25µm

Compound	RT#1	RT#2	Resp#1	Resp#2	ng/ml	ng/ml
----------	------	------	--------	--------	-------	-------

System Monitoring Compounds

Target Compounds

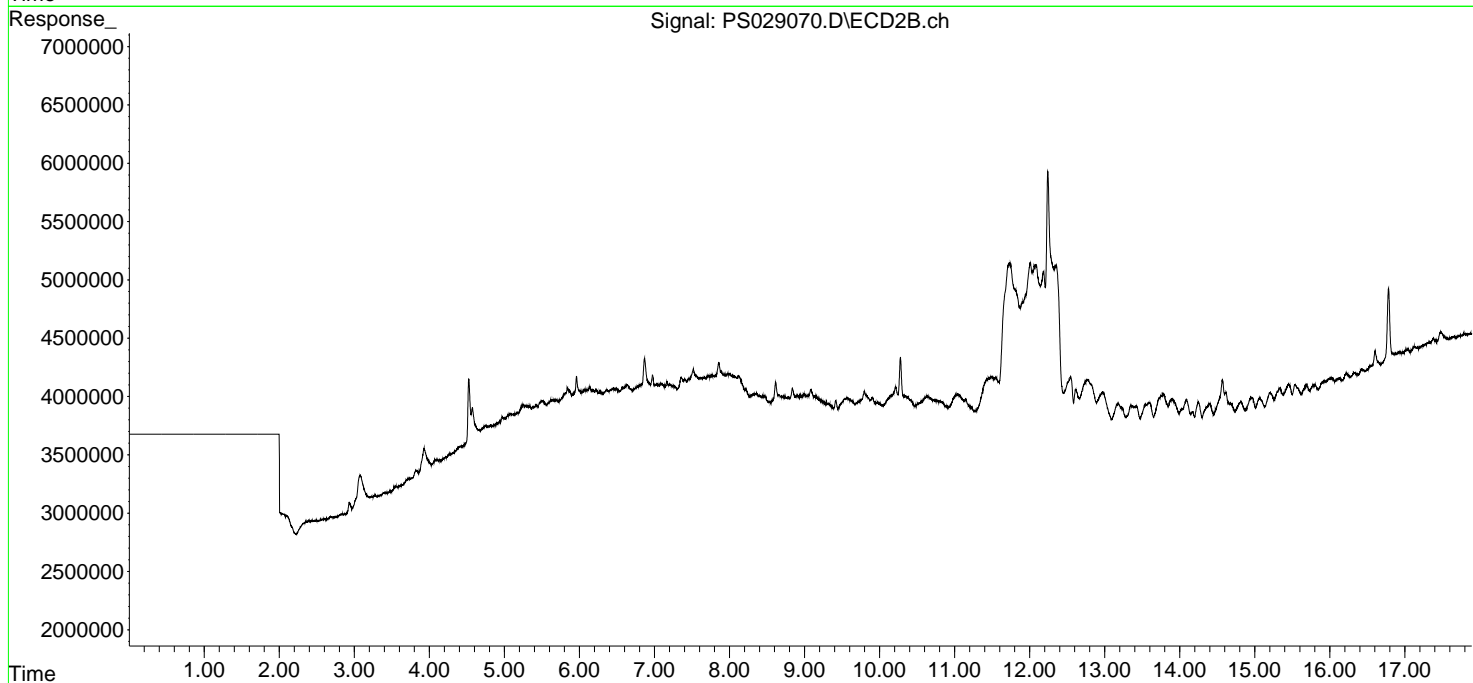
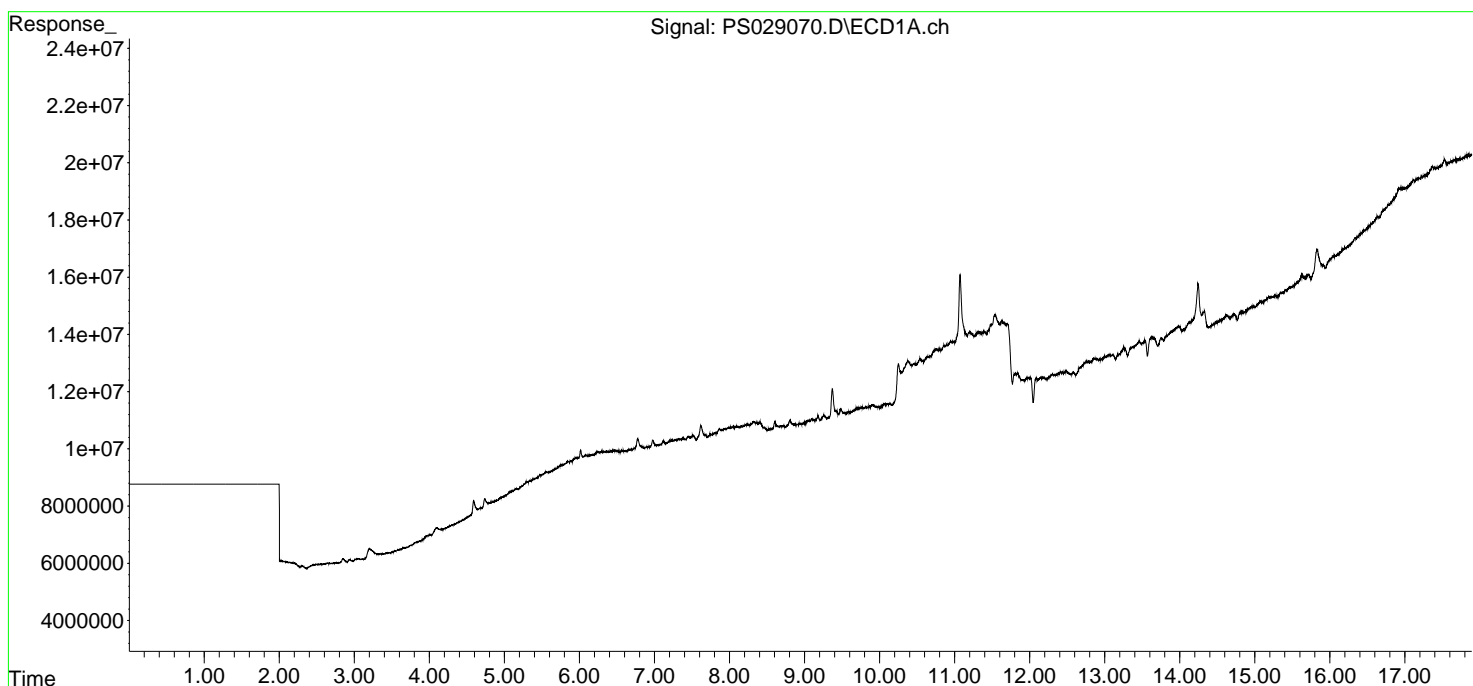
(f)=RT Delta > 1/2 Window (#)=Amounts differ by > 25% (m)=manual int.

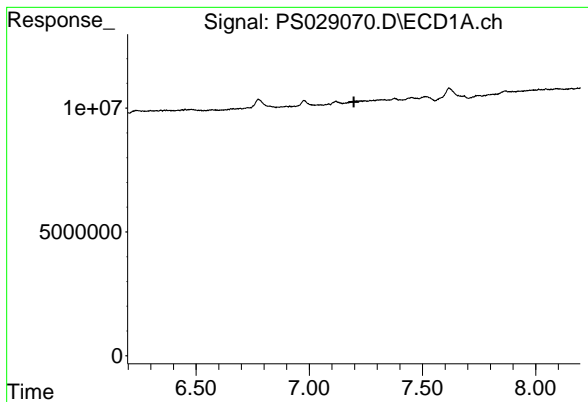
Data Path : Z:\pestpcbsrv\HPCHEM1\ECD_S\Data\PS020525\
Data File : PS029070.D
Signal(s) : Signal #1: ECD1A.ch Signal #2: ECD2B.ch
Acq On : 05 Feb 2025 08:46
Operator : AR\AJ
Sample : HEXANE
Misc :
ALS Vial : 1 Sample Multiplier: 1

Instrument :
ECD_S
ClientSampleId :
HEXANE

Integration File signal 1: autoint1.e
Integration File signal 2: autoint2.e
Quant Time: Feb 06 02:12:43 2025
Quant Method : Z:\pestpcbsrv\HPCHEM1\ECD_S\Method\PS011425.M
Quant Title : 8080.M
QLast Update : Tue Feb 04 17:44:08 2025
Response via : Initial Calibration
Integrator: ChemStation

Volume Inj. : 1 µl
Signal #1 Phase : ZB-MR1 Signal #2 Phase: ZB-MR2
Signal #1 Info : 30M x 0.32mm x 0.5 Signal #2 Info : 30M x 0.32mm x 0.25µm

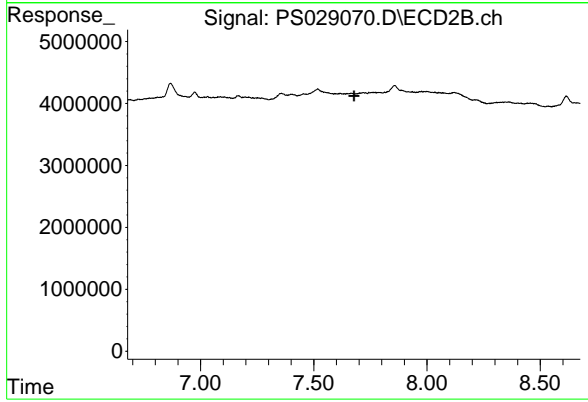




#4 2,4-DCAA

R.T.: 0.000 min
 Exp R.T. : 7.197 min
 Response: 0
 Conc: N.D.

Instrument :
 ECD_S
 ClientSampleId :
 HEXANE



#4 2,4-DCAA

R.T.: 0.000 min
 Exp R.T. : 7.677 min
 Response: 0
 Conc: N.D.