

Data Path : Z:\pestpcbsrv\HPCHEM1\ECD\_S\Data\PS020720\  
 Data File : PS008753.D  
 Signal(s) : Signal #1: ECD1A.ch Signal #2: ECD2B.ch  
 Acq On : 07 Feb 2020 13:44  
 Operator : DD\AJ  
 Sample : L1408-09  
 Misc :  
 ALS Vial : 9 Sample Multiplier: 1

**Instrument :**  
 ECD\_S  
**ClientSampleId :**  
 SHORE-RD-PATH-BH-02-A

**Manual Integrations**  
**APPROVED**  
 Sohil  
 2/10/2020 1:48:50 PM

Integration File signal 1: autoint1.e  
 Integration File signal 2: autoint2.e  
 Quant Time: Feb 07 22:43:39 2020  
 Quant Method : Z:\pestpcbsrv\HPCHEM1\ECD\_S\Method\PS020420.M  
 Quant Title : 8080.M  
 QLast Update : Wed Feb 05 02:36:36 2020  
 Response via : Initial Calibration  
 Integrator: ChemStation

Volume Inj. : 2 µl  
 Signal #1 Phase : Rtx-CLPesticides Signal #2 Phase: Rtx-CLPesticides2  
 Signal #1 Info : 30M x 0.32mm x0.5 Signal #2 Info : 30M x 0.32mm x 0.25µm

Compound	RT#1	RT#2	Resp#1	Resp#2	ng/ml	ng/ml
-----						
System Monitoring Compounds						
4) S 2,4-DCAA	7.252	6.946	793.7E6	338.7E6	369.801	365.482m
Target Compounds						
-----						

(f)=RT Delta > 1/2 Window (#)=Amounts differ by > 25% (m)=manual int.

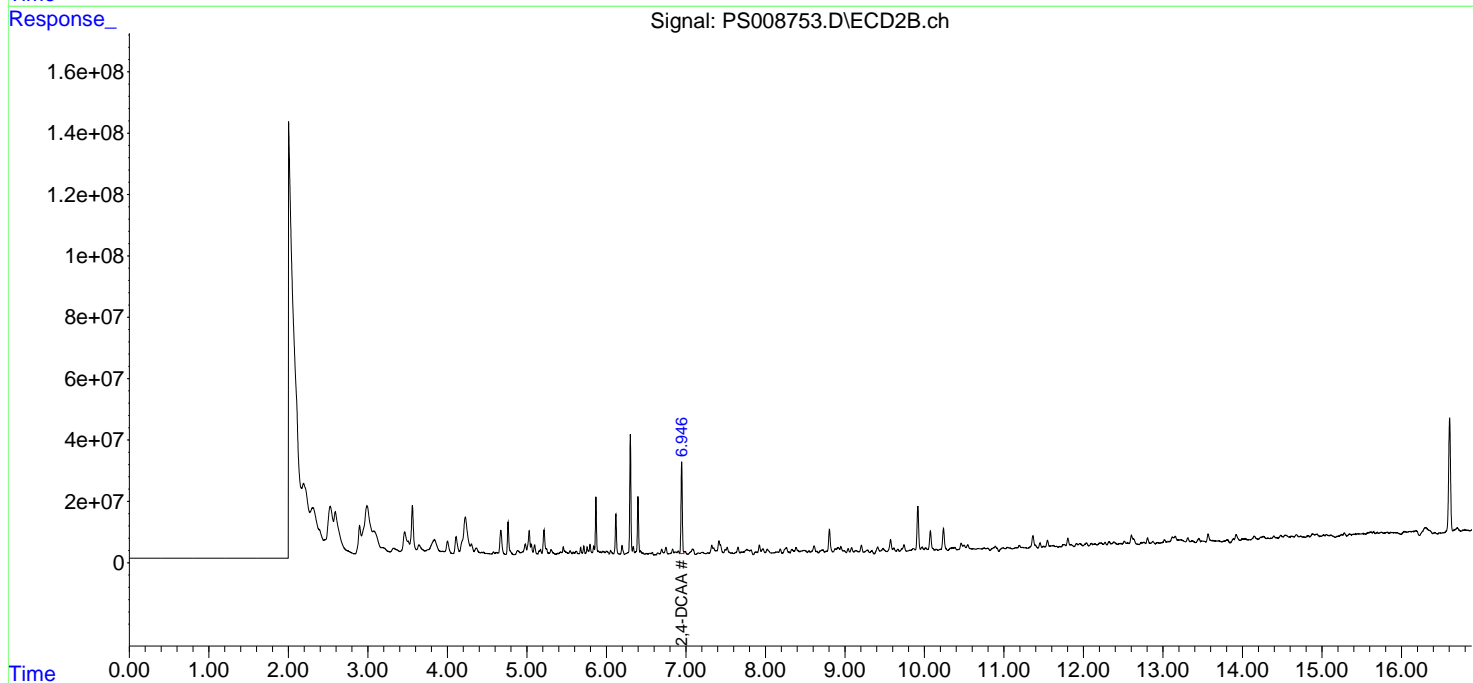
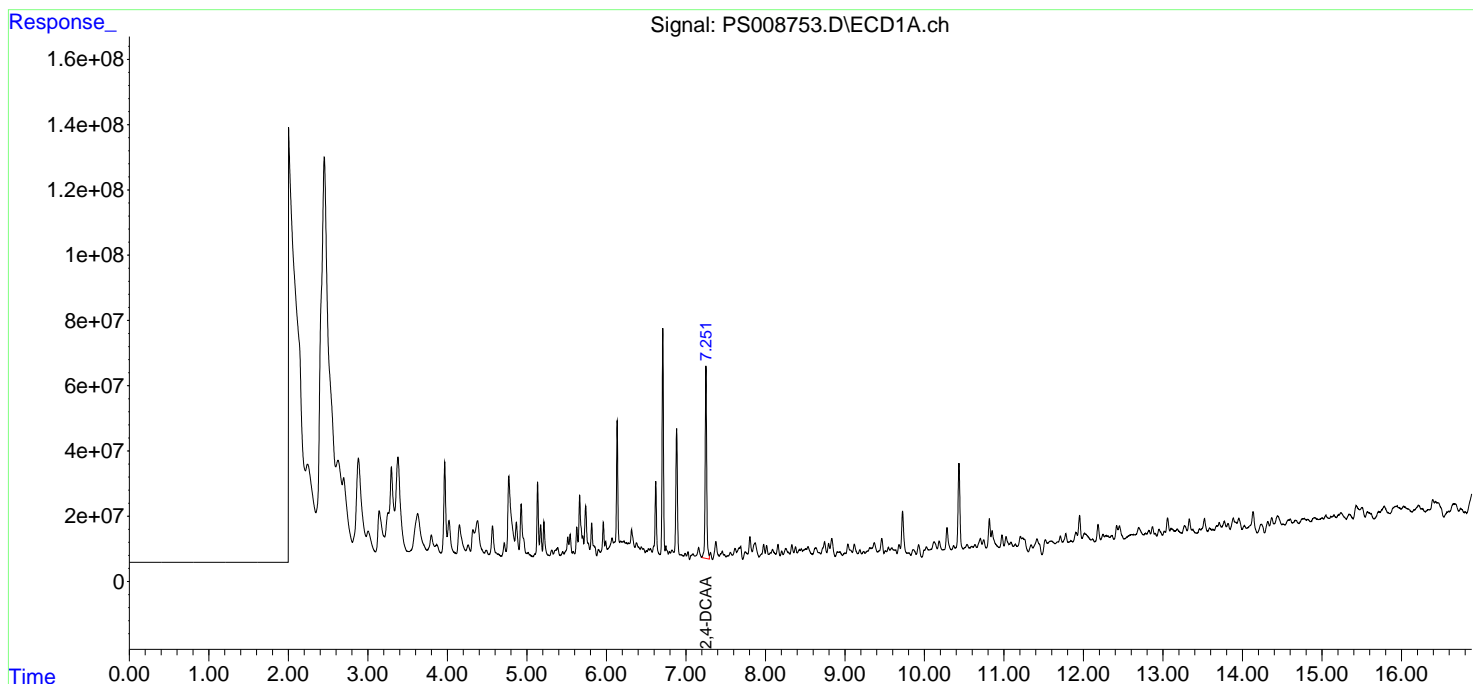
Data Path : Z:\pestpcbsrv\HPCHEM1\ECD\_S\Data\PS020720\  
 Data File : PS008753.D  
 Signal(s) : Signal #1: ECD1A.ch Signal #2: ECD2B.ch  
 Acq On : 07 Feb 2020 13:44  
 Operator : DD\AJ  
 Sample : L1408-09  
 Misc :  
 ALS Vial : 9 Sample Multiplier: 1

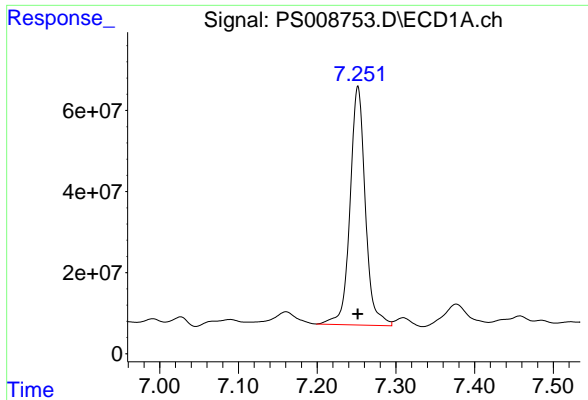
**Instrument :**  
 ECD\_S  
**ClientSampled :**  
 SHORE-RD-PATH-BH-02-A

**Manual Integrations**  
**APPROVED**  
 Sohil  
 2/10/2020 1:48:50 PM

Integration File signal 1: autoint1.e  
 Integration File signal 2: autoint2.e  
 Quant Time: Feb 07 22:43:39 2020  
 Quant Method : Z:\pestpcbsrv\HPCHEM1\ECD\_S\Method\PS020420.M  
 Quant Title : 8080.M  
 QLast Update : Wed Feb 05 02:36:36 2020  
 Response via : Initial Calibration  
 Integrator: ChemStation

Volume Inj. : 2 µl  
 Signal #1 Phase : Rtx-CLPesticides Signal #2 Phase: Rtx-CLPesticides2  
 Signal #1 Info : 30M x 0.32mm x 0.5 Signal #2 Info : 30M x 0.32mm x 0.25µm





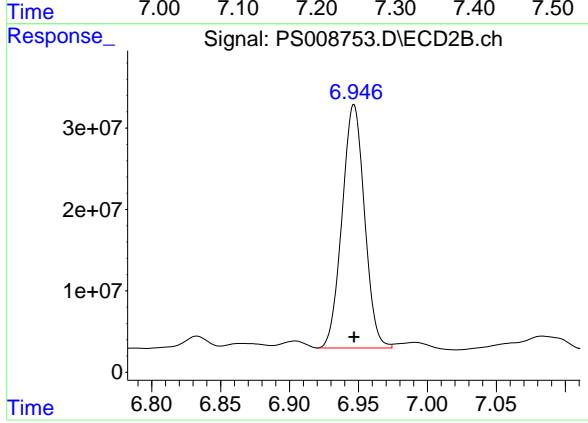
#4 2,4-DCAA

R.T.: 7.252 min  
Delta R.T.: 0.000 min  
Response: 793707968  
Conc: 369.80 ng/ml

Instrument :  
ECD\_S  
ClientSampleId :  
SHORE-RD-PATH-BH-02-A

Manual Integrations  
APPROVED

Sohil  
2/10/2020 1:48:50 PM



#4 2,4-DCAA

R.T.: 6.946 min  
Delta R.T.: 0.000 min  
Response: 338737533  
Conc: 365.48 ng/ml m