

Data Path : Z:\pestpcbsrv\HPCHEM1\ECD_S\Data\PS020723\
 Data File : PS022040.D
 Signal(s) : Signal #1: ECD1A.ch Signal #2: ECD2B.ch
 Acq On : 07 Feb 2023 09:23
 Operator : AR\AJ
 Sample : HSTDCCC750
 Misc :
 ALS Vial : 3 Sample Multiplier: 1

Instrument :
 ECD_S
 ClientSampleId :

Integration File signal 1: autoint1.e
 Integration File signal 2: autoint2.e
 Quant Time: Feb 07 21:44:30 2023
 Quant Method : Z:\pestpcbsrv\HPCHEM1\ECD_S\Method\PS020223.M
 Quant Title : 8080.M
 QLast Update : Fri Feb 03 10:03:01 2023
 Response via : Initial Calibration
 Integrator: ChemStation

Volume Inj. : 2 µl
 Signal #1 Phase : Rtx-CLPesticides Signal #2 Phase: Rtx-CLPesticides2
 Signal #1 Info : 30M x 0.32mm x0.5 Signal #2 Info : 30M x 0.32mm x 0.25µm

| | Compound | RT#1 | RT#2 | Resp#1 | Resp#2 | ng/ml | ng/ml |
|-----------------------------|--------------|--------|--------|-----------|-----------|---------|---------|
| ----- | | | | | | | |
| System Monitoring Compounds | | | | | | | |
| 4) S | 2,4-DCAA | 6.301 | 6.727 | 1638.3E6 | 1435.0E6 | 718.756 | 708.904 |
| Target Compounds | | | | | | | |
| 1) T | Dalapon | 2.413 | 2.488 | 2029.3E6 | 2009.1E6 | 653.572 | 645.660 |
| 2) T | 3,5-DICHL... | 5.682 | 5.925 | 2306.2E6 | 2001.5E6 | 669.711 | 669.788 |
| 3) T | 4-Nitroph... | 6.144 | 6.352 | 882.0E6 | 873.1E6 | 655.320 | 653.774 |
| 5) T | DICAMBA | 6.438 | 6.886 | 6670.7E6 | 6527.7E6 | 689.648 | 690.935 |
| 6) T | MCP P | 6.590 | 6.985 | 505.0E6 | 519.8E6 | 70.127 | 69.651 |
| 7) T | MCPA | 6.713 | 7.196 | 689.9E6 | 685.8E6 | 68.895 | 68.277 |
| 8) T | DICHLORPROP | 7.021 | 7.506 | 1670.1E6 | 1619.5E6 | 675.511 | 676.891 |
| 9) T | 2,4-D | 7.223 | 7.797 | 2039.6E6 | 1910.1E6 | 678.401 | 677.399 |
| 10) T | Pentachlo... | 7.443 | 8.215 | 23228.8E6 | 22129.3E6 | 703.489 | 696.539 |
| 11) T | 2,4,5-TP ... | 7.971 | 8.579 | 9236.8E6 | 9115.9E6 | 693.282 | 692.144 |
| 12) T | 2,4,5-T | 8.230 | 8.954 | 9806.8E6 | 8478.7E6 | 683.323 | 701.600 |
| 13) T | 2,4-DB | 8.735 | 9.458 | 1608.8E6 | 1172.3E6 | 731.721 | 694.252 |
| 14) T | DINOSEB | 9.779 | 9.783 | 7011.2E6 | 6459.0E6 | 681.744 | 690.998 |
| 15) T | Picloram | 9.617 | 10.751 | 13699.1E6 | 13251.0E6 | 735.583 | 730.125 |
| 16) T | DCPA | 10.047 | 10.707 | 11844.6E6 | 10695.0E6 | 697.102 | 694.928 |

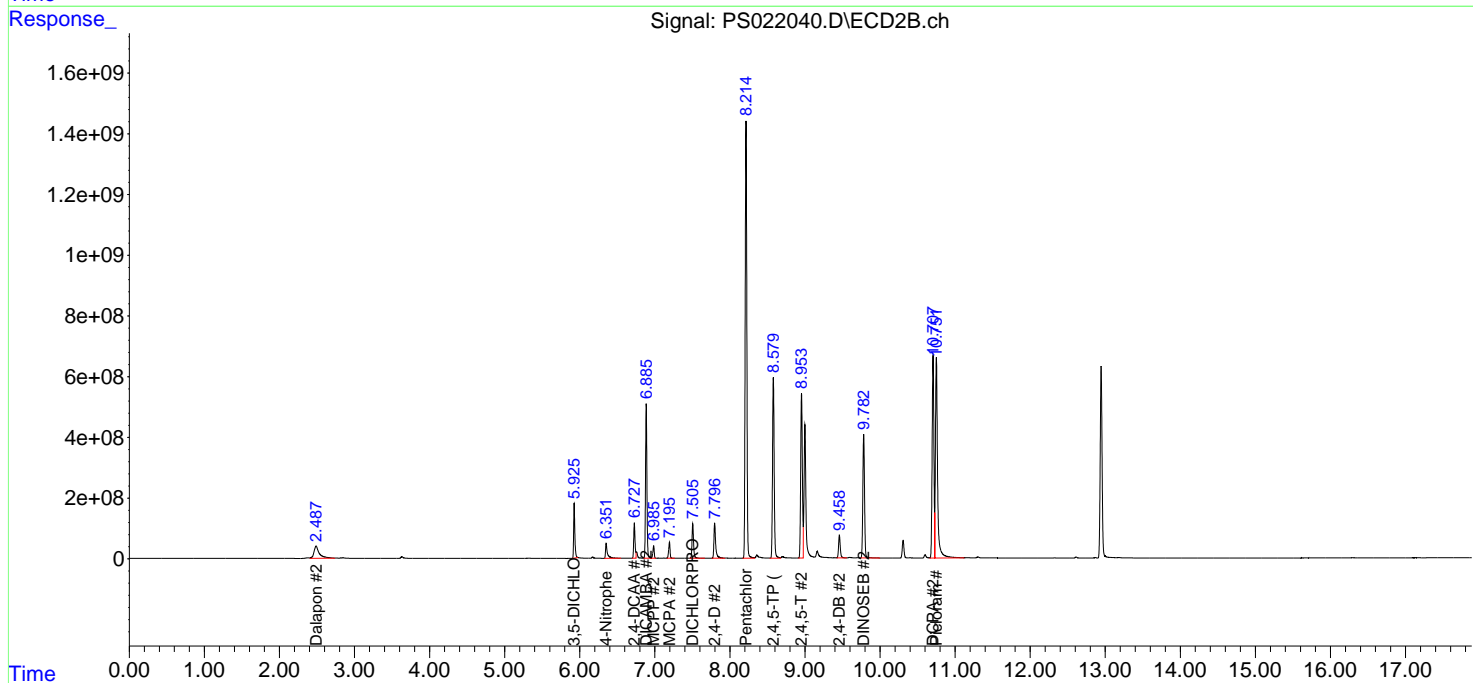
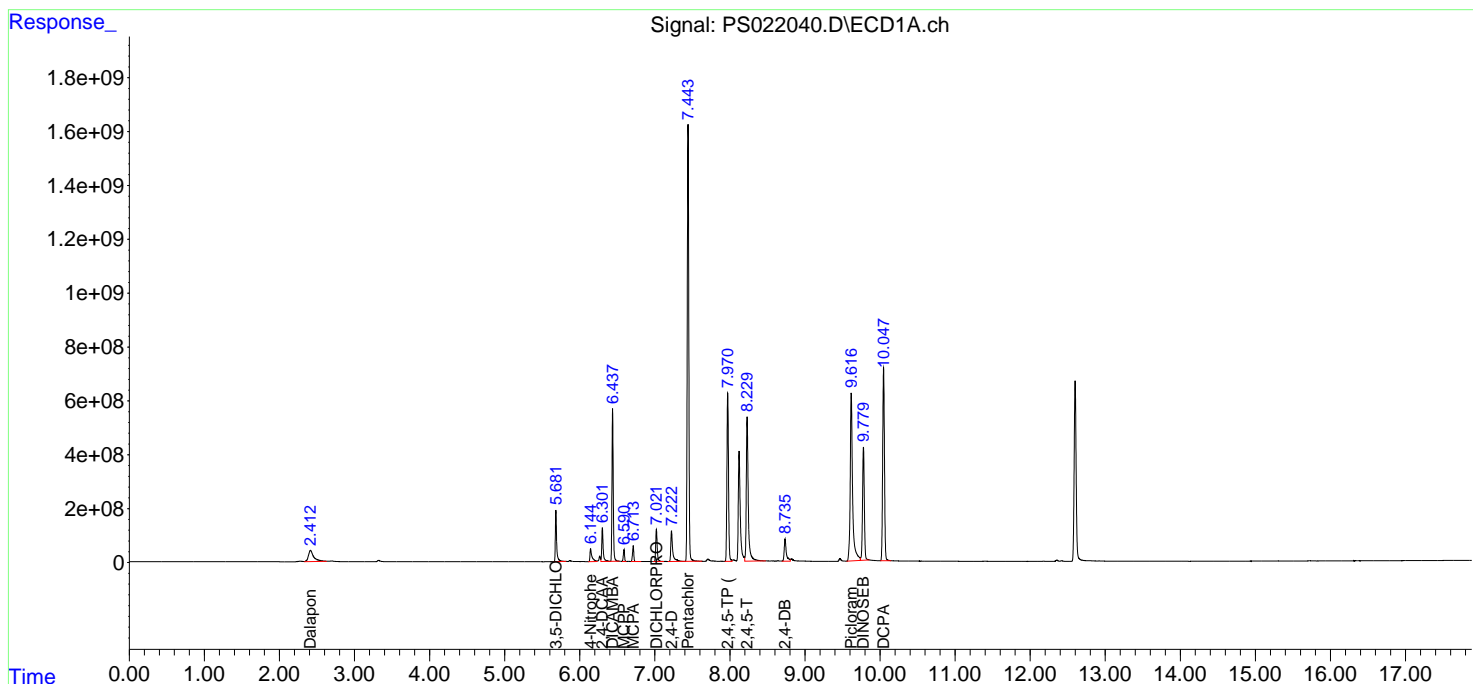
(f)=RT Delta > 1/2 Window (#)=Amounts differ by > 25% (m)=manual int.

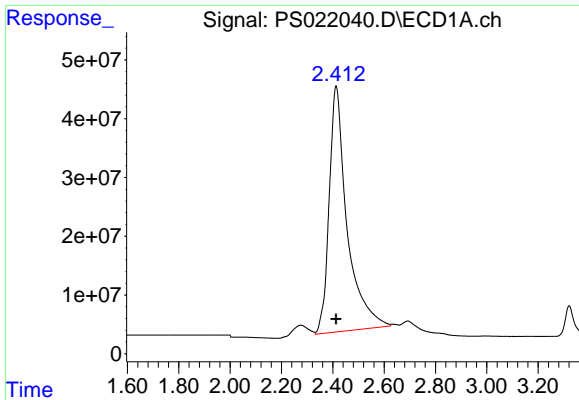
Data Path : Z:\pestpcbsrv\HPCHEM1\ECD_S\Data\PS020723\
 Data File : PS022040.D
 Signal(s) : Signal #1: ECD1A.ch Signal #2: ECD2B.ch
 Acq On : 07 Feb 2023 09:23
 Operator : AR\AJ
 Sample : HSTDCCC750
 Misc :
 ALS Vial : 3 Sample Multiplier: 1

Instrument :
 ECD_S
 ClientSampleId :

Integration File signal 1: autoint1.e
 Integration File signal 2: autoint2.e
 Quant Time: Feb 07 21:44:30 2023
 Quant Method : Z:\pestpcbsrv\HPCHEM1\ECD_S\Method\PS020223.M
 Quant Title : 8080.M
 QLast Update : Fri Feb 03 10:03:01 2023
 Response via : Initial Calibration
 Integrator: ChemStation

Volume Inj. : 2 µl
 Signal #1 Phase : Rtx-CLPesticides Signal #2 Phase: Rtx-CLPesticides2
 Signal #1 Info : 30M x 0.32mm x0.5 Signal #2 Info : 30M x 0.32mm x 0.25µm

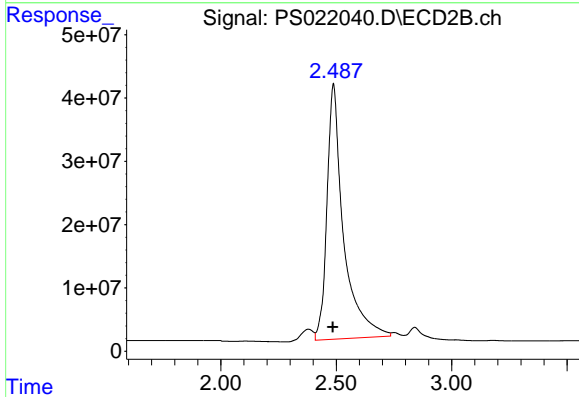




#1 Dalapon

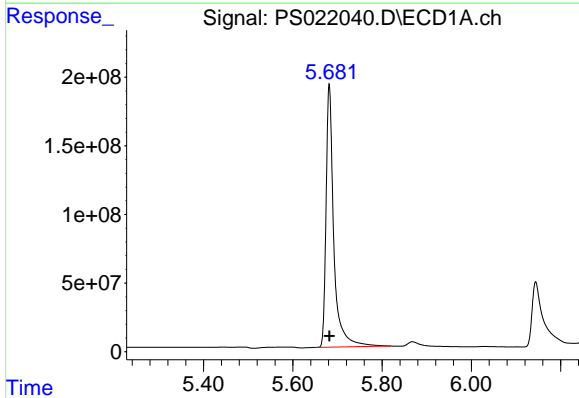
R.T.: 2.413 min
 Delta R.T.: 0.000 min
 Response: 2029256848
 Conc: 653.57 ng/ml

Instrument :
 ECD_S
 ClientSampleId :



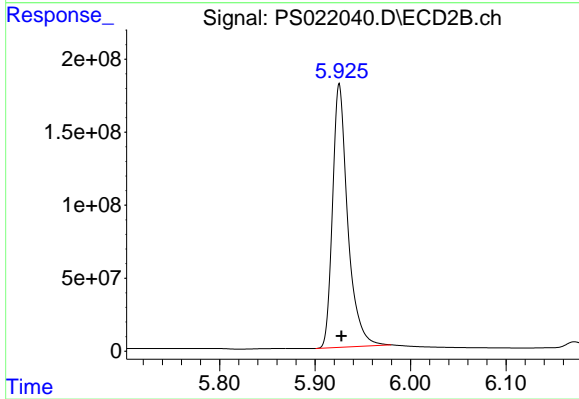
#1 Dalapon

R.T.: 2.488 min
 Delta R.T.: 0.003 min
 Response: 2009058034
 Conc: 645.66 ng/ml



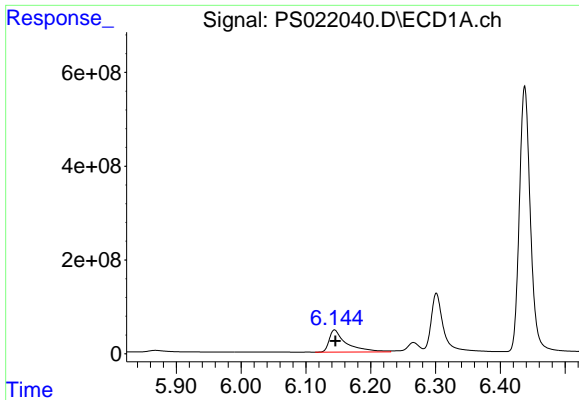
#2 3,5-DICHLOROBENZOIC ACID

R.T.: 5.682 min
 Delta R.T.: 0.000 min
 Response: 2306240199
 Conc: 669.71 ng/ml



#2 3,5-DICHLOROBENZOIC ACID

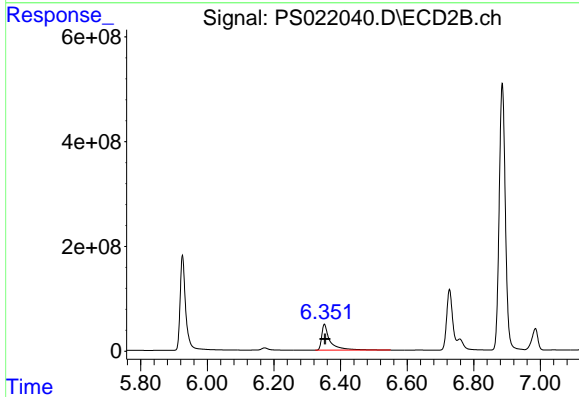
R.T.: 5.925 min
 Delta R.T.: -0.002 min
 Response: 2001470132
 Conc: 669.79 ng/ml



#3 4-Nitrophenol

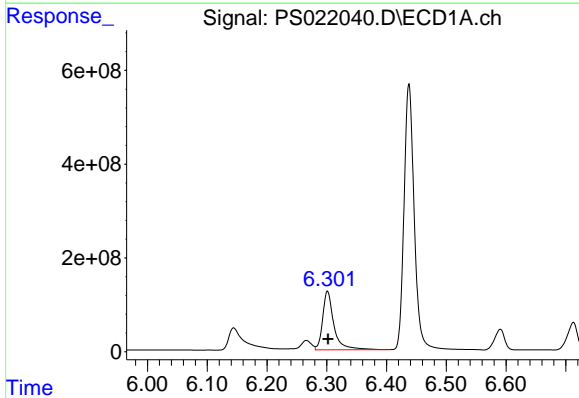
R.T.: 6.144 min
 Delta R.T.: 0.000 min
 Response: 881979847
 Conc: 655.32 ng/ml

Instrument :
 ECD_S
 ClientSampleId :



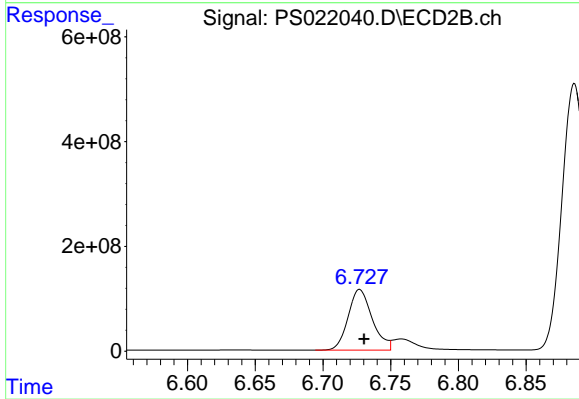
#3 4-Nitrophenol

R.T.: 6.352 min
 Delta R.T.: -0.002 min
 Response: 873060355
 Conc: 653.77 ng/ml



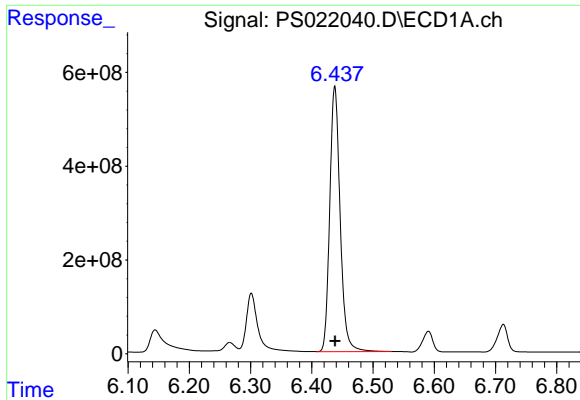
#4 2,4-DCAA

R.T.: 6.301 min
 Delta R.T.: 0.000 min
 Response: 1638306220
 Conc: 718.76 ng/ml



#4 2,4-DCAA

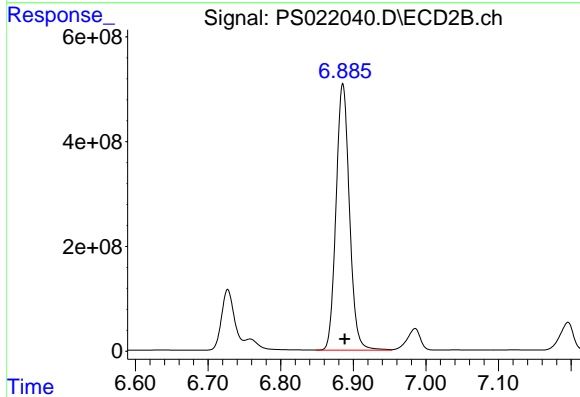
R.T.: 6.727 min
 Delta R.T.: -0.003 min
 Response: 1434991704
 Conc: 708.90 ng/ml



#5 DICAMBA

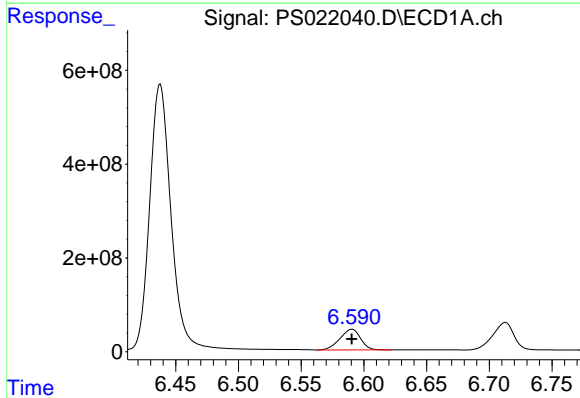
R.T.: 6.438 min
 Delta R.T.: 0.000 min
 Response: 6670740468
 Conc: 689.65 ng/ml

Instrument :
 ECD_S
 ClientSampleId :



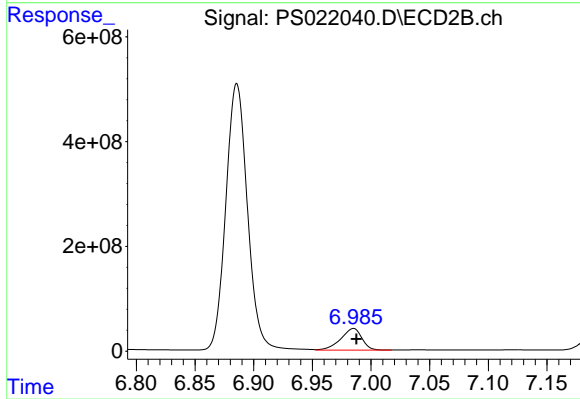
#5 DICAMBA

R.T.: 6.886 min
 Delta R.T.: -0.003 min
 Response: 6527652681
 Conc: 690.93 ng/ml



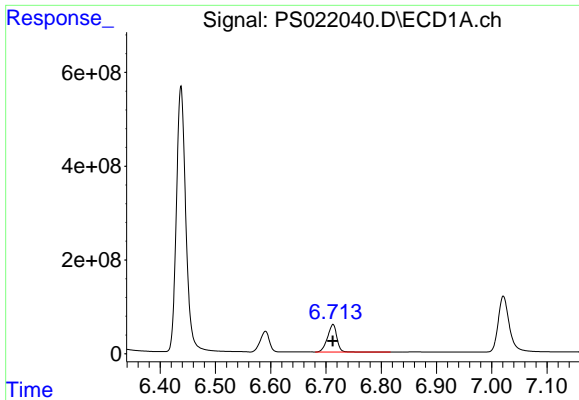
#6 MCP

R.T.: 6.590 min
 Delta R.T.: 0.000 min
 Response: 504979044
 Conc: 70.13 ug/ml



#6 MCP

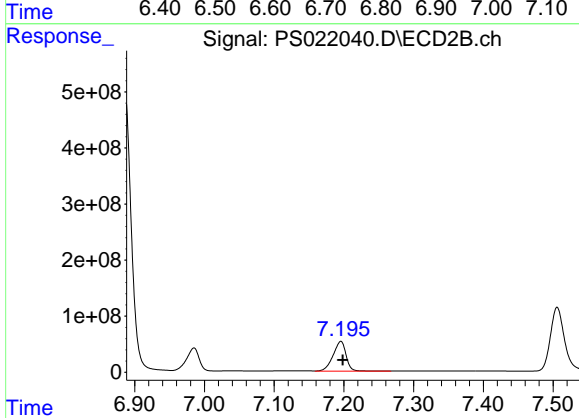
R.T.: 6.985 min
 Delta R.T.: -0.003 min
 Response: 519796025
 Conc: 69.65 ug/ml



#7 MCPA

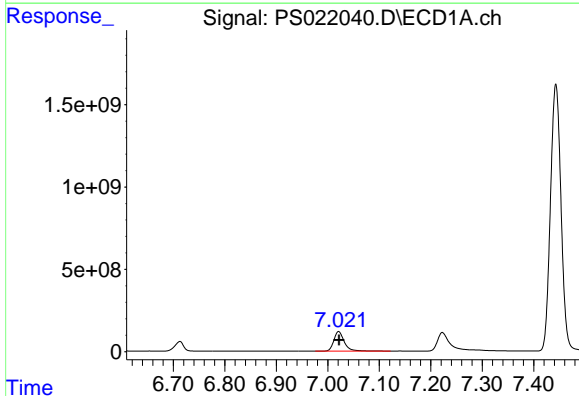
R.T.: 6.713 min
 Delta R.T.: 0.000 min
 Response: 689919799
 Conc: 68.89 ug/ml

Instrument :
 ECD_S
 ClientSampleId :



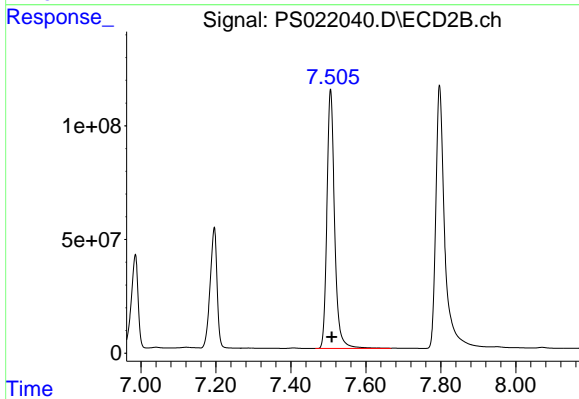
#7 MCPA

R.T.: 7.196 min
 Delta R.T.: -0.003 min
 Response: 685820025
 Conc: 68.28 ug/ml



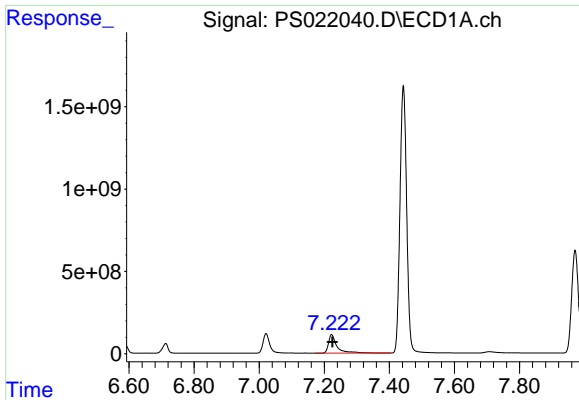
#8 DICHLORPROP

R.T.: 7.021 min
 Delta R.T.: -0.001 min
 Response: 1670058198
 Conc: 675.51 ng/ml



#8 DICHLORPROP

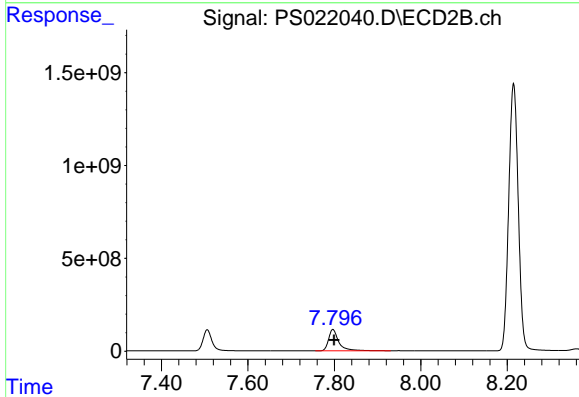
R.T.: 7.506 min
 Delta R.T.: -0.003 min
 Response: 1619464988
 Conc: 676.89 ng/ml



#9 2,4-D

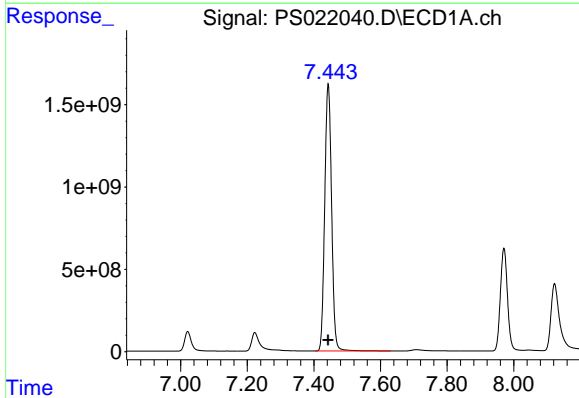
R.T.: 7.223 min
Delta R.T.: -0.002 min
Response: 2039590921
Conc: 678.40 ng/ml

Instrument :
ECD_S
ClientSampleId :



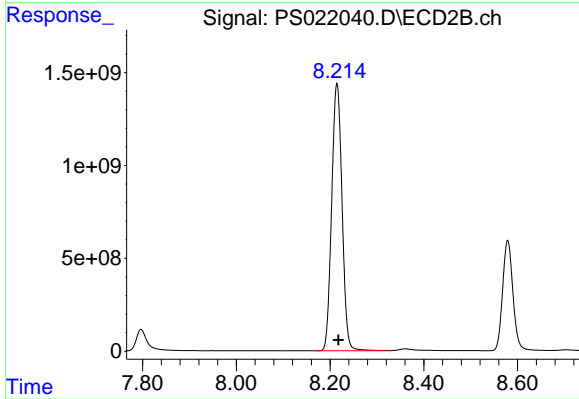
#9 2,4-D

R.T.: 7.797 min
Delta R.T.: -0.003 min
Response: 1910093481
Conc: 677.40 ng/ml



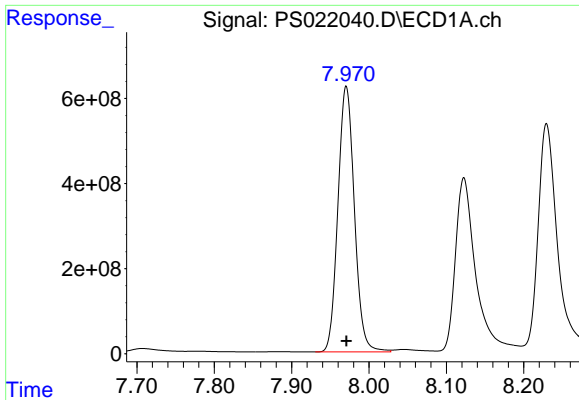
#10 Pentachlorophenol

R.T.: 7.443 min
Delta R.T.: 0.000 min
Response: 23228757479
Conc: 703.49 ng/ml



#10 Pentachlorophenol

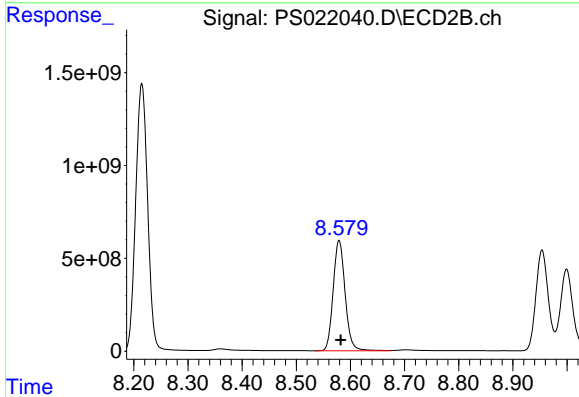
R.T.: 8.215 min
Delta R.T.: -0.003 min
Response: 22129313280
Conc: 696.54 ng/ml



#11 2,4,5-TP (SILVEX)

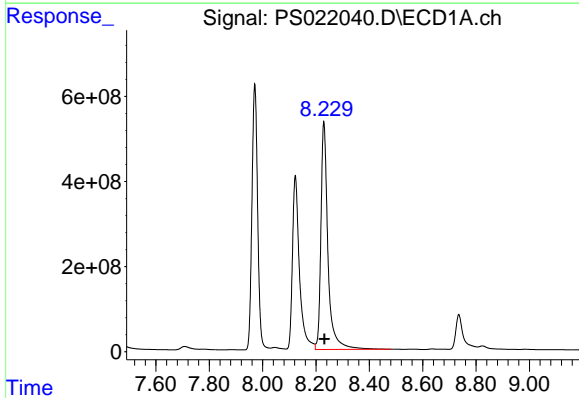
R.T.: 7.971 min
 Delta R.T.: 0.000 min
 Response: 9236807736
 Conc: 693.28 ng/ml

Instrument :
 ECD_S
 ClientSampleId :



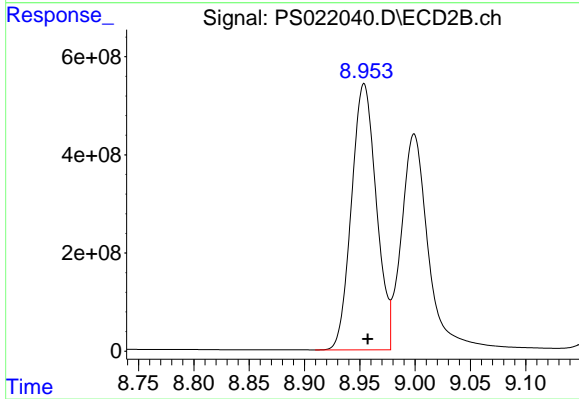
#11 2,4,5-TP (SILVEX)

R.T.: 8.579 min
 Delta R.T.: -0.004 min
 Response: 9115949460
 Conc: 692.14 ng/ml



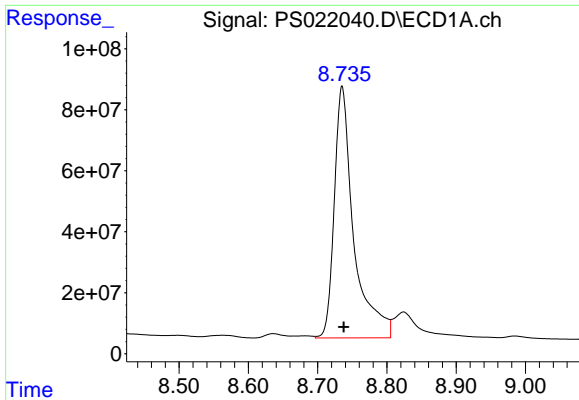
#12 2,4,5-T

R.T.: 8.230 min
 Delta R.T.: -0.002 min
 Response: 9806758253
 Conc: 683.32 ng/ml



#12 2,4,5-T

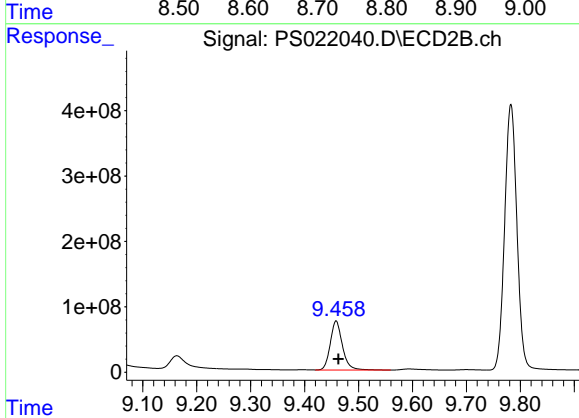
R.T.: 8.954 min
 Delta R.T.: -0.003 min
 Response: 8478707376
 Conc: 701.60 ng/ml



#13 2,4-DB

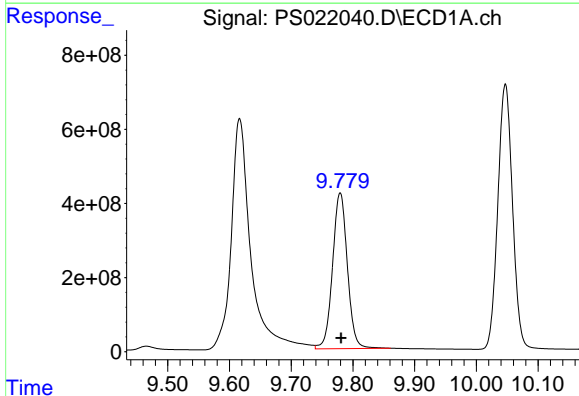
R.T.: 8.735 min
 Delta R.T.: -0.002 min
 Response: 1608833750
 Conc: 731.72 ng/ml

Instrument :
 ECD_S
 ClientSampleId :



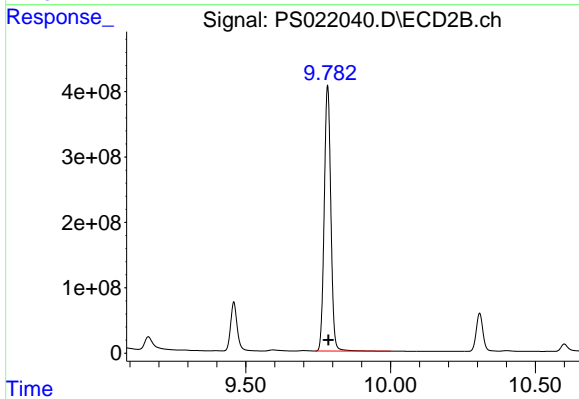
#13 2,4-DB

R.T.: 9.458 min
 Delta R.T.: -0.004 min
 Response: 1172316230
 Conc: 694.25 ng/ml



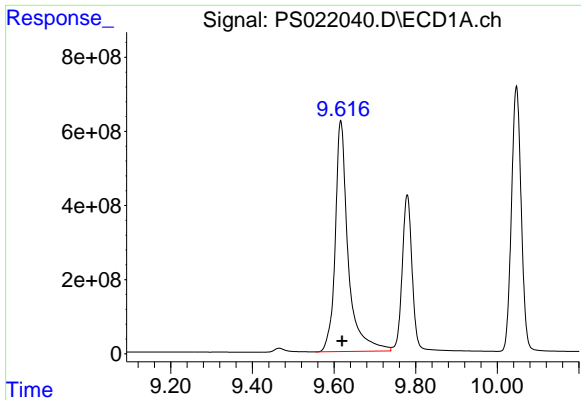
#14 DINOSEB

R.T.: 9.779 min
 Delta R.T.: -0.002 min
 Response: 7011180443
 Conc: 681.74 ng/ml



#14 DINOSEB

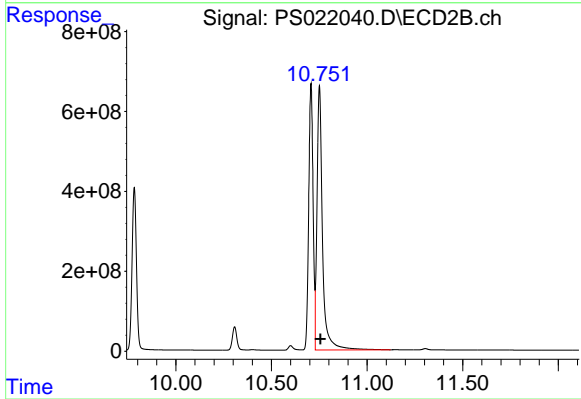
R.T.: 9.783 min
 Delta R.T.: -0.003 min
 Response: 6458977778
 Conc: 691.00 ng/ml



#15 Picloram

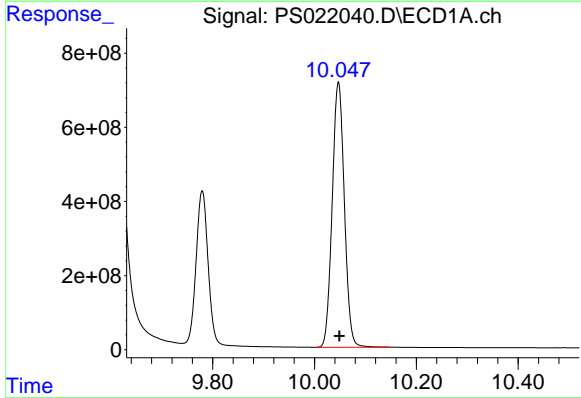
R.T.: 9.617 min
 Delta R.T.: -0.003 min
 Response: 13699118293
 Conc: 735.58 ng/ml

Instrument :
 ECD_S
 ClientSampleId :



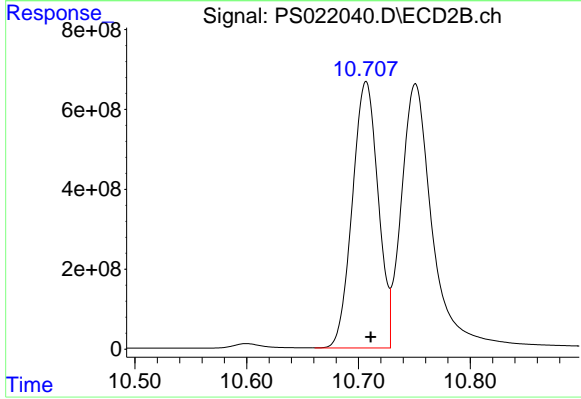
#15 Picloram

R.T.: 10.751 min
 Delta R.T.: -0.005 min
 Response: 13250960351
 Conc: 730.12 ng/ml



#16 DCPA

R.T.: 10.047 min
 Delta R.T.: -0.002 min
 Response: 11844561596
 Conc: 697.10 ng/ml



#16 DCPA

R.T.: 10.707 min
 Delta R.T.: -0.004 min
 Response: 10694999847
 Conc: 694.93 ng/ml