

Data Path : Z:\pestpcbsrv\HPCHEM1\ECD_S\Data\PS020724\
 Data File : PS025859.D
 Signal(s) : Signal #1: ECD1A.ch Signal #2: ECD2B.ch
 Acq On : 08 Feb 2024 05:59
 Operator : AR\AJ
 Sample : P1311-07RE
 Misc :
 ALS Vial : 37 Sample Multiplier: 1

Instrument :
 ECD_S
 ClientSampleId :
 TP-4RE

Integration File signal 1: autoint1.e
 Integration File signal 2: autoint2.e
 Quant Time: Feb 08 07:38:59 2024
 Quant Method : Z:\pestpcbsrv\HPCHEM1\ECD_S\Method\PS020624.M
 Quant Title : 8080.M
 QLast Update : Tue Feb 06 15:37:16 2024
 Response via : Initial Calibration
 Integrator: ChemStation

Volume Inj. : 2 µl
 Signal #1 Phase : Rtx-CLPesticides Signal #2 Phase: Rtx-CLPesticides2
 Signal #1 Info : 30M x 0.32mm x0.5 Signal #2 Info : 30M x 0.32mm x 0.25µm

	Compound	RT#1	RT#2	Resp#1	Resp#2	ng/ml	ng/ml

System Monitoring Compounds							
4) S	2,4-DCAA	6.348	6.754	471.6E6	243.0E6	334.147	345.436
Target Compounds							
2) T	3,5-DICHL...	0.000	5.978	0	960889	N.D.	<MDL
3) T	4-Nitroph...	0.000	6.393	0	5486894	N.D.	12.008
5) T	DICAMBA	0.000	6.911	0	1738651	N.D.	<MDL
6) T	MCPD	6.677	7.005	66870666	5673739	18.381	2.773 #
7) T	MCPA	6.791	7.210	5815467	4959602	1.080	1.592 #
8) T	DICHLORPROP	7.116f	7.537	14501626	24827166	9.226	31.090 #
9) T	2,4-D	0.000	7.809	0	3237951	N.D.	3.796
10) T	Pentachlo...	0.000	8.226	0	3862898	N.D.	<MDL
11) T	2,4,5-TP ...	8.030	8.612	8888472	1221371	1.007	<MDL #
12) T	2,4,5-T	8.292	8.956	36633186	3284581	3.870	<MDL #
13) T	2,4-DB	8.792	9.462	71791926	27946619	62.025	63.090
14) T	DINOSEB	9.772f	9.773	199.5E6	11259693	29.686	3.916 #
15) T	Picloram	9.706f	10.706	81194612	-401958	6.904	N.D. #
16) T	DCPA	10.089	10.706	24832475	-401958	2.118	N.D. #

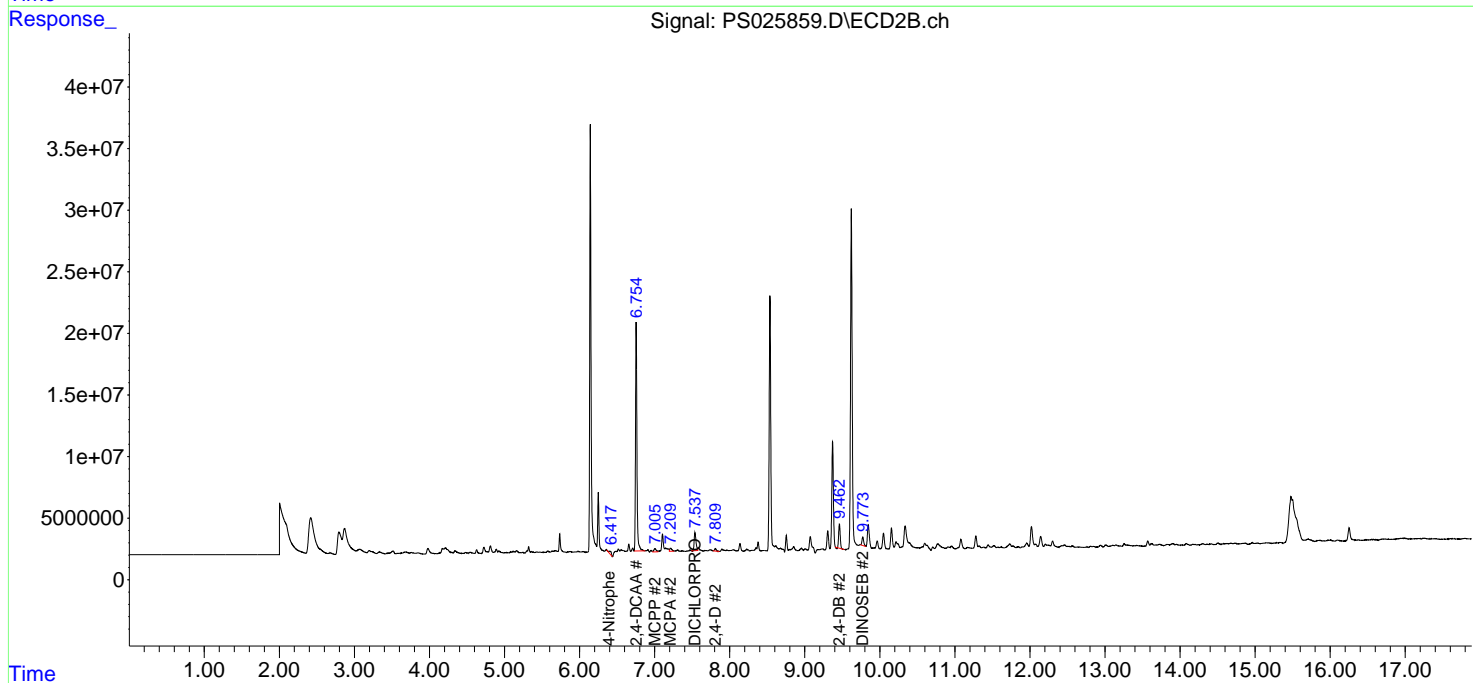
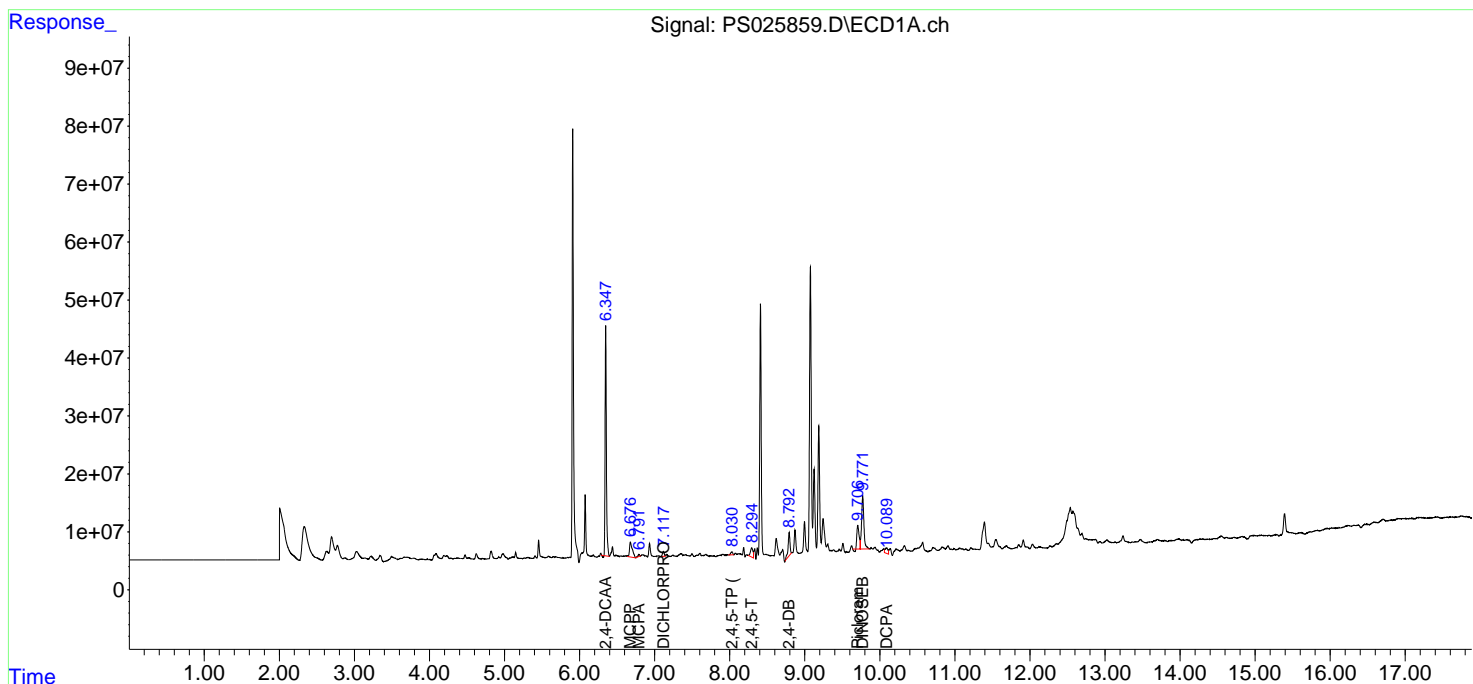
(f)=RT Delta > 1/2 Window (#)=Amounts differ by > 25% (m)=manual int.

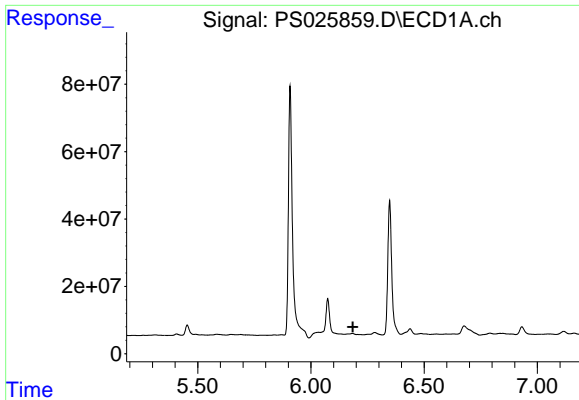
Data Path : Z:\pestpcbsrv\HPCHEM1\ECD_S\Data\PS020724\
 Data File : PS025859.D
 Signal(s) : Signal #1: ECD1A.ch Signal #2: ECD2B.ch
 Acq On : 08 Feb 2024 05:59
 Operator : AR\AJ
 Sample : P1311-07RE
 Misc :
 ALS Vial : 37 Sample Multiplier: 1

Instrument :
 ECD_S
 ClientSampleId :
 TP-4RE

Integration File signal 1: autoint1.e
 Integration File signal 2: autoint2.e
 Quant Time: Feb 08 07:38:59 2024
 Quant Method : Z:\pestpcbsrv\HPCHEM1\ECD_S\Method\PS020624.M
 Quant Title : 8080.M
 QLast Update : Tue Feb 06 15:37:16 2024
 Response via : Initial Calibration
 Integrator: ChemStation

Volume Inj. : 2 µl
 Signal #1 Phase : Rtx-CLPesticides Signal #2 Phase: Rtx-CLPesticides2
 Signal #1 Info : 30M x 0.32mm x0.5 Signal #2 Info : 30M x 0.32mm x 0.25µm

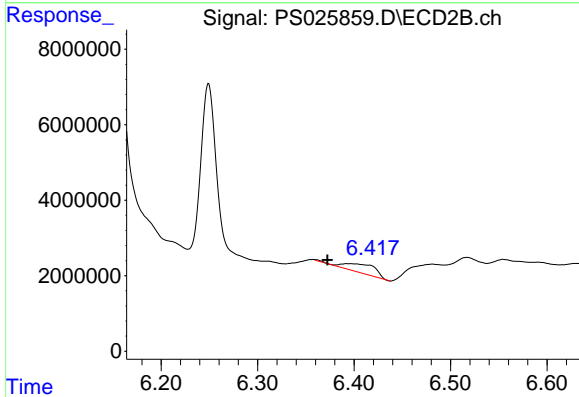




#3 4-Nitrophenol

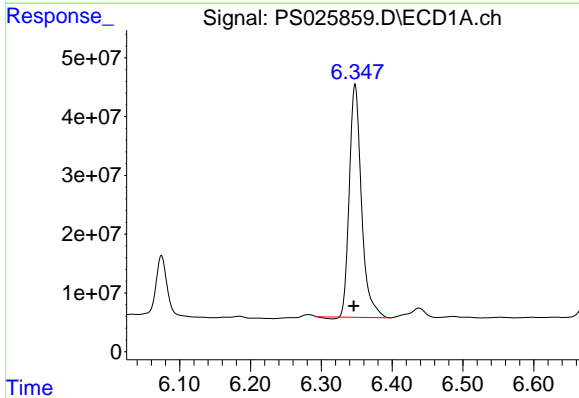
R.T.: 0.000 min
 Exp R.T.: 6.185 min
 Response: 0
 Conc: N.D.

Instrument :
 ECD_S
 ClientSampleId :
 TP-4RE



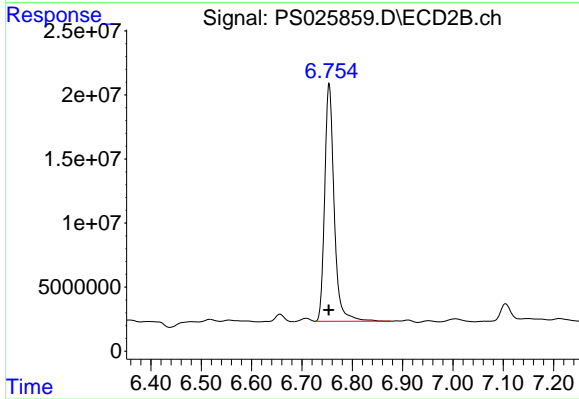
#3 4-Nitrophenol

R.T.: 6.393 min
 Delta R.T.: 0.021 min
 Response: 5486894
 Conc: 12.01 ng/ml



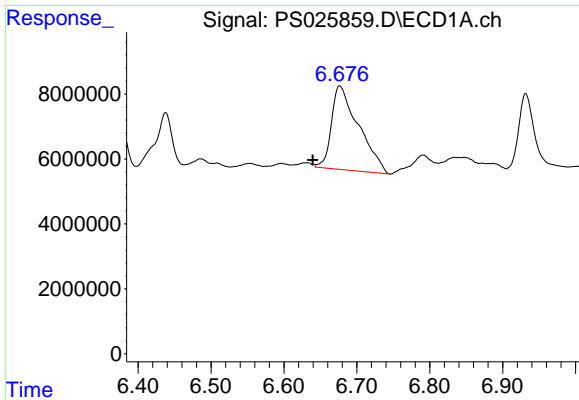
#4 2,4-DCAA

R.T.: 6.348 min
 Delta R.T.: 0.002 min
 Response: 471565968
 Conc: 334.15 ng/ml



#4 2,4-DCAA

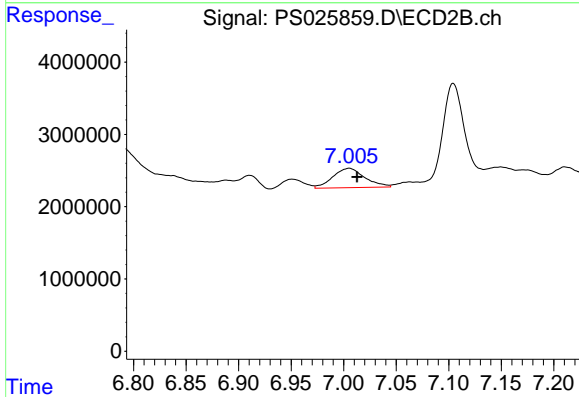
R.T.: 6.754 min
 Delta R.T.: 0.000 min
 Response: 242994670
 Conc: 345.44 ng/ml



#6 MCPP

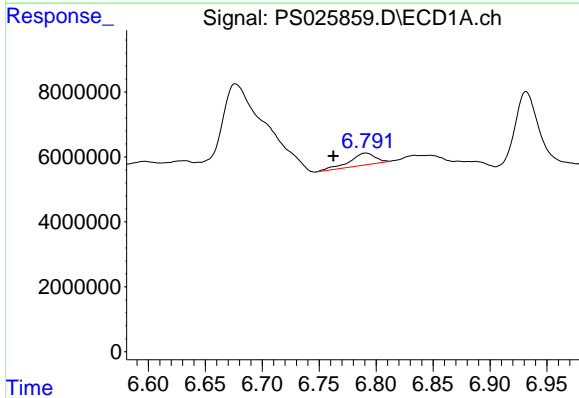
R.T.: 6.677 min
 Delta R.T.: 0.037 min
 Response: 66870666
 Conc: 18.38 ug/ml

Instrument :
 ECD_S
 ClientSampleId :
 TP-4RE



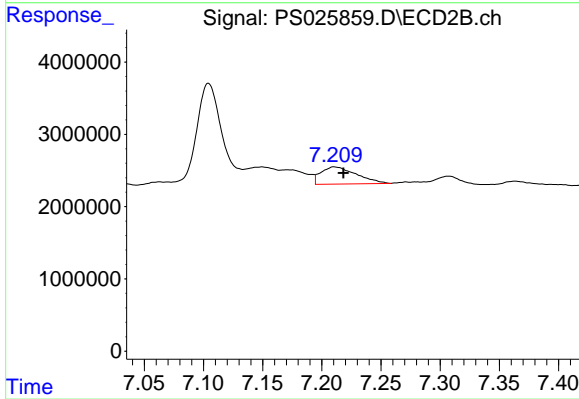
#6 MCPP

R.T.: 7.005 min
 Delta R.T.: -0.007 min
 Response: 5673739
 Conc: 2.77 ug/ml



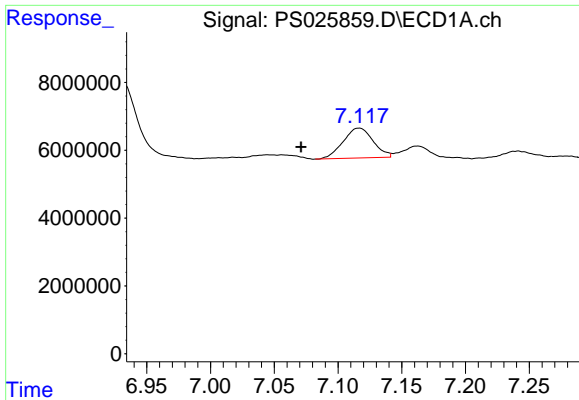
#7 MCPA

R.T.: 6.791 min
 Delta R.T.: 0.028 min
 Response: 5815467
 Conc: 1.08 ug/ml



#7 MCPA

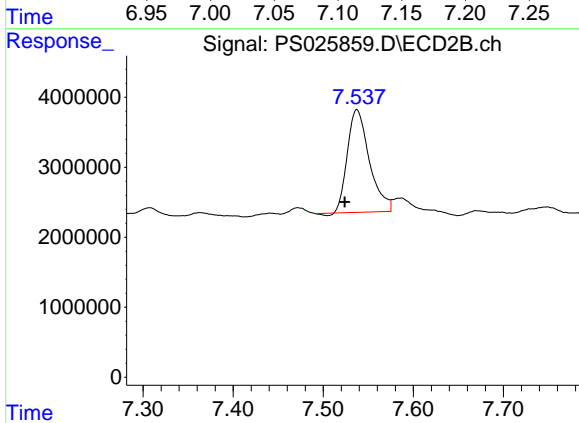
R.T.: 7.210 min
 Delta R.T.: -0.008 min
 Response: 4959602
 Conc: 1.59 ug/ml



#8 DICHLORPROP

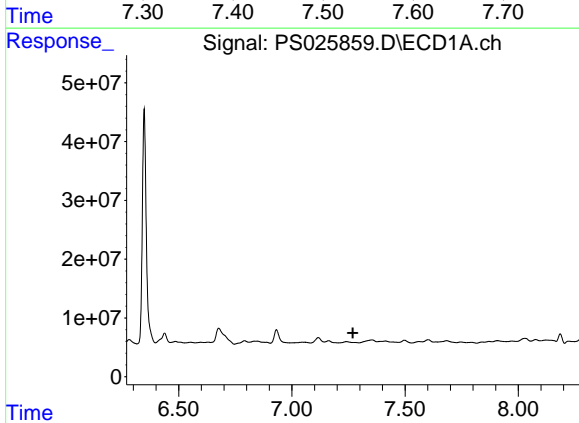
R.T.: 7.116 min
 Delta R.T.: 0.045 min
 Response: 14501626
 Conc: 9.23 ng/ml

Instrument :
 ECD_S
 ClientSampleId :
 TP-4RE



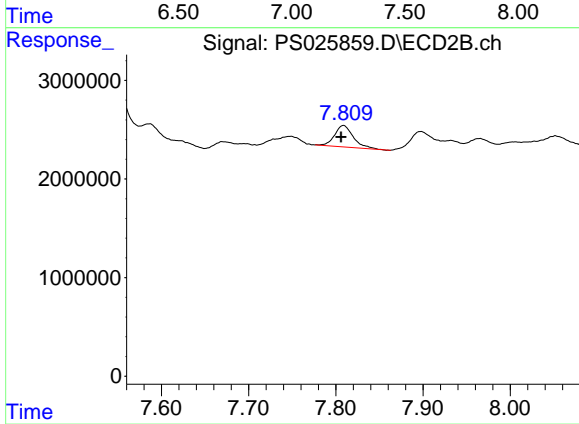
#8 DICHLORPROP

R.T.: 7.537 min
 Delta R.T.: 0.014 min
 Response: 24827166
 Conc: 31.09 ng/ml



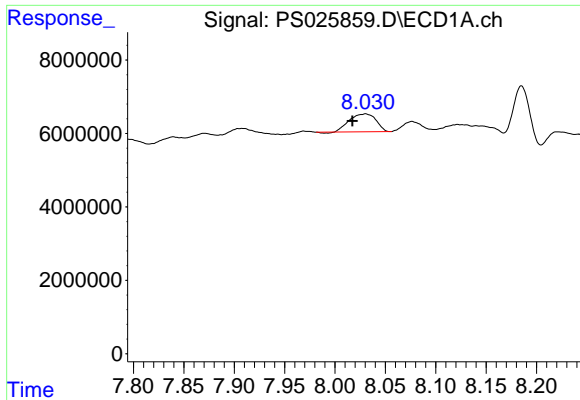
#9 2,4-D

R.T.: 0.000 min
 Exp R.T. : 7.269 min
 Response: 0
 Conc: N.D.



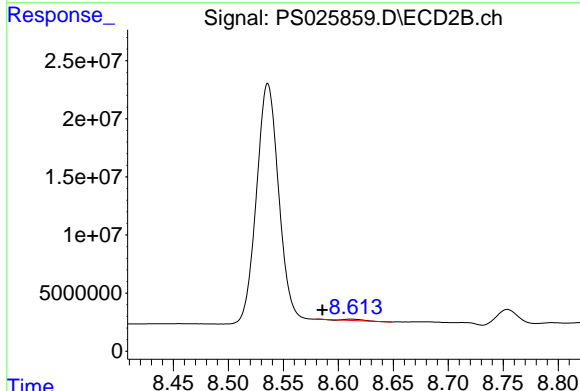
#9 2,4-D

R.T.: 7.809 min
 Delta R.T.: 0.003 min
 Response: 3237951
 Conc: 3.80 ng/ml

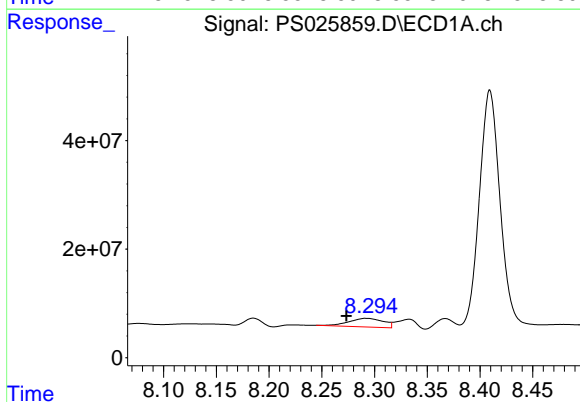


#11 2,4,5-TP (SILVEX)
 R.T.: 8.030 min
 Delta R.T.: 0.013 min
 Response: 8888472
 Conc: 1.01 ng/ml

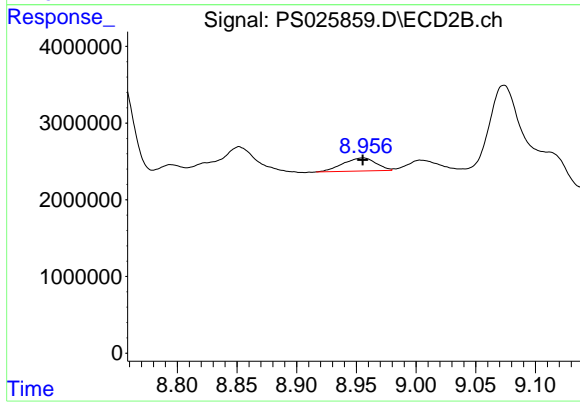
Instrument :
 ECD_S
 ClientSampleId :
 TP-4RE



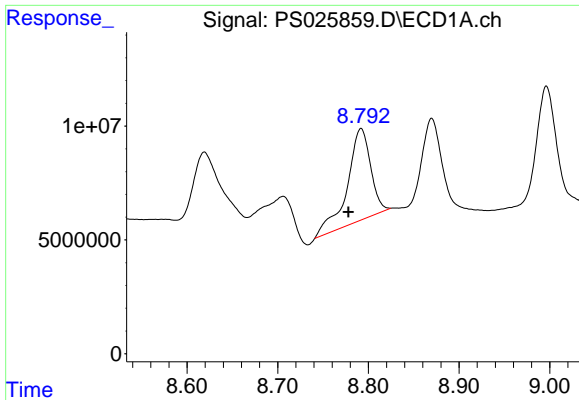
#11 2,4,5-TP (SILVEX)
 R.T.: 8.612 min
 Delta R.T.: 0.026 min
 Response: 1221371
 Conc: N.D.



#12 2,4,5-T
 R.T.: 8.292 min
 Delta R.T.: 0.019 min
 Response: 36633186
 Conc: 3.87 ng/ml



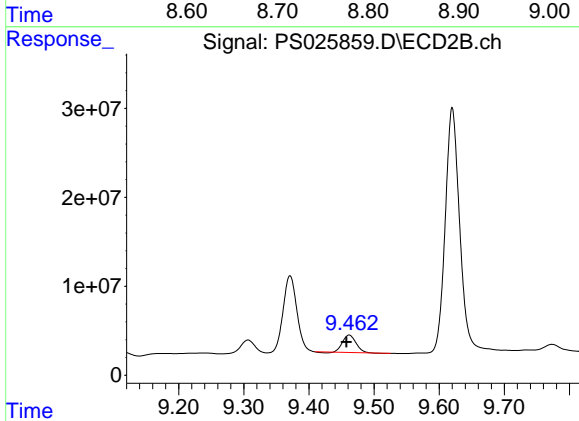
#12 2,4,5-T
 R.T.: 8.956 min
 Delta R.T.: 0.000 min
 Response: 3284581
 Conc: N.D.



#13 2,4-DB

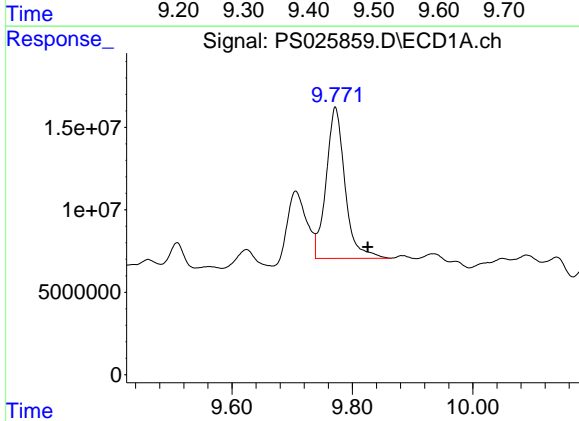
R.T.: 8.792 min
 Delta R.T.: 0.014 min
 Response: 71791926
 Conc: 62.02 ng/ml

Instrument :
 ECD_S
 ClientSampleId :
 TP-4RE



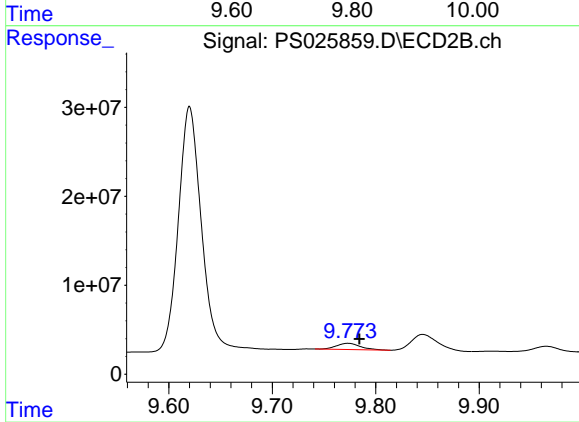
#13 2,4-DB

R.T.: 9.462 min
 Delta R.T.: 0.005 min
 Response: 27946619
 Conc: 63.09 ng/ml



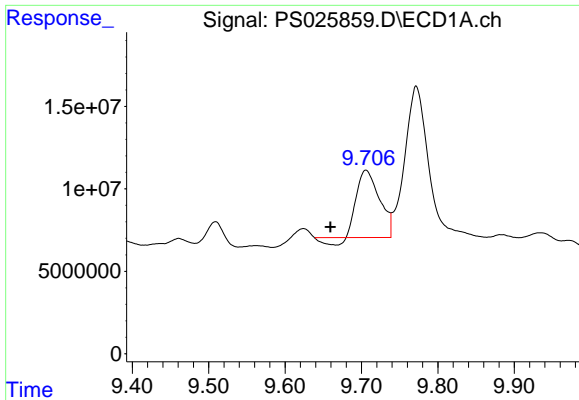
#14 DINOSEB

R.T.: 9.772 min
 Delta R.T.: -0.054 min
 Response: 199502307
 Conc: 29.69 ng/ml



#14 DINOSEB

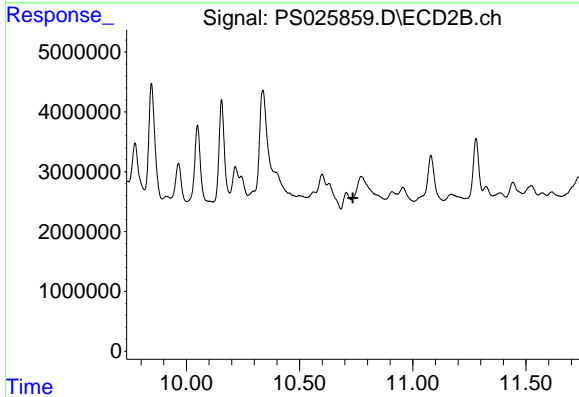
R.T.: 9.773 min
 Delta R.T.: -0.011 min
 Response: 11259693
 Conc: 3.92 ng/ml



#15 Picloram

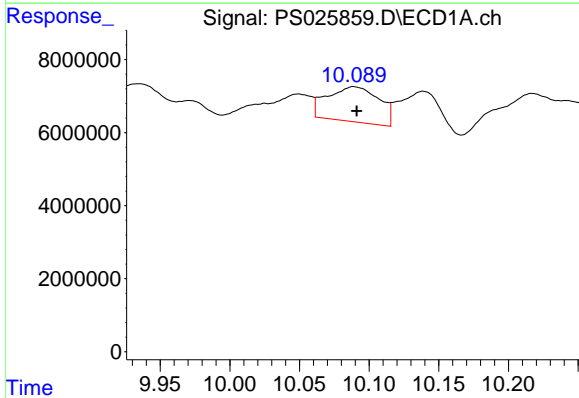
R.T.: 9.706 min
 Delta R.T.: 0.047 min
 Response: 81194612
 Conc: 6.90 ng/ml

Instrument :
 ECD_S
 ClientSampleId :
 TP-4RE



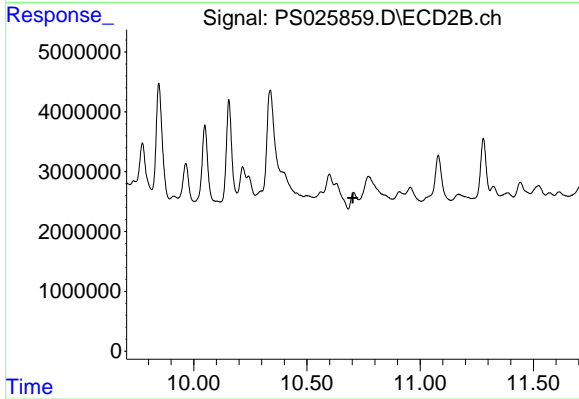
#15 Picloram

R.T.: 10.706 min
 Delta R.T.: -0.029 min
 Response: -401958
 Conc: N.D.



#16 DCPA

R.T.: 10.089 min
 Delta R.T.: -0.002 min
 Response: 24832475
 Conc: 2.12 ng/ml



#16 DCPA

R.T.: 10.706 min
 Delta R.T.: 0.004 min
 Response: -401958
 Conc: N.D.