

Data Path : Z:\pestpcbsrv\HPCHEM1\ECD_S\Data\PS020819\
 Data File : PS003082.D
 Signal(s) : Signal #1: ECD1A.ch Signal #2: ECD2B.ch
 Acq On : 08 Feb 2019 14:19
 Operator : EI\SJ
 Sample : K1389-04
 Misc :
 ALS Vial : 11 Sample Multiplier: 1

Instrument :
 ECD_S
 ClientSampleId :
 M-4

Integration File signal 1: autoint1.e
 Integration File signal 2: autoint2.e
 Quant Time: Feb 08 22:12:22 2019
 Quant Method : Z:\pestpcbsrv\HPCHEM1\ECD_S\Method\PS012819.M
 Quant Title : 8080.M
 QLast Update : Tue Jan 29 06:11:45 2019
 Response via : Initial Calibration
 Integrator: ChemStation

Volume Inj. : 2 µl
 Signal #1 Phase : Rtx-CLPesticides Signal #2 Phase: Rtx-CLPesticides2
 Signal #1 Info : 30M x 0.32mm x0.5 Signal #2 Info : 30M x 0.32mm x 0.25µm

Compound	RT#1	RT#2	Resp#1	Resp#2	ng/ml	ng/ml

System Monitoring Compounds						
4) S 2,4-DCAA	11.280	10.780	143.2E6	230.4E6	377.177	538.991 #
Target Compounds						
1) T Dalapon	0.000	2.287	0	109.1E6	N.D.	203.554 #
2) T 3,5-DICHL...	0.000	8.948	0	7659006	N.D.	13.590 #
3) T 4-Nitroph...	0.000	10.001	0	14905845	N.D.	71.312 #
10) T Pentachlo...	0.000	13.276	0	1584559	N.D.	0.256 #
11) T 2,4,5-TP ...	14.466	0.000	12908615	0	5.126	N.D. #
12) T 2,4,5-T	0.000	14.383	0	4652480	N.D.	2.431 #
14) T DINOSEB	0.000	15.486	0	6760462	N.D.	3.857 #
15) T Picloram	16.776	16.705	7339622	16654369	2.320	5.540 #
16) T DCPA	0.000	16.705	0	16654369	N.D.	5.377 #

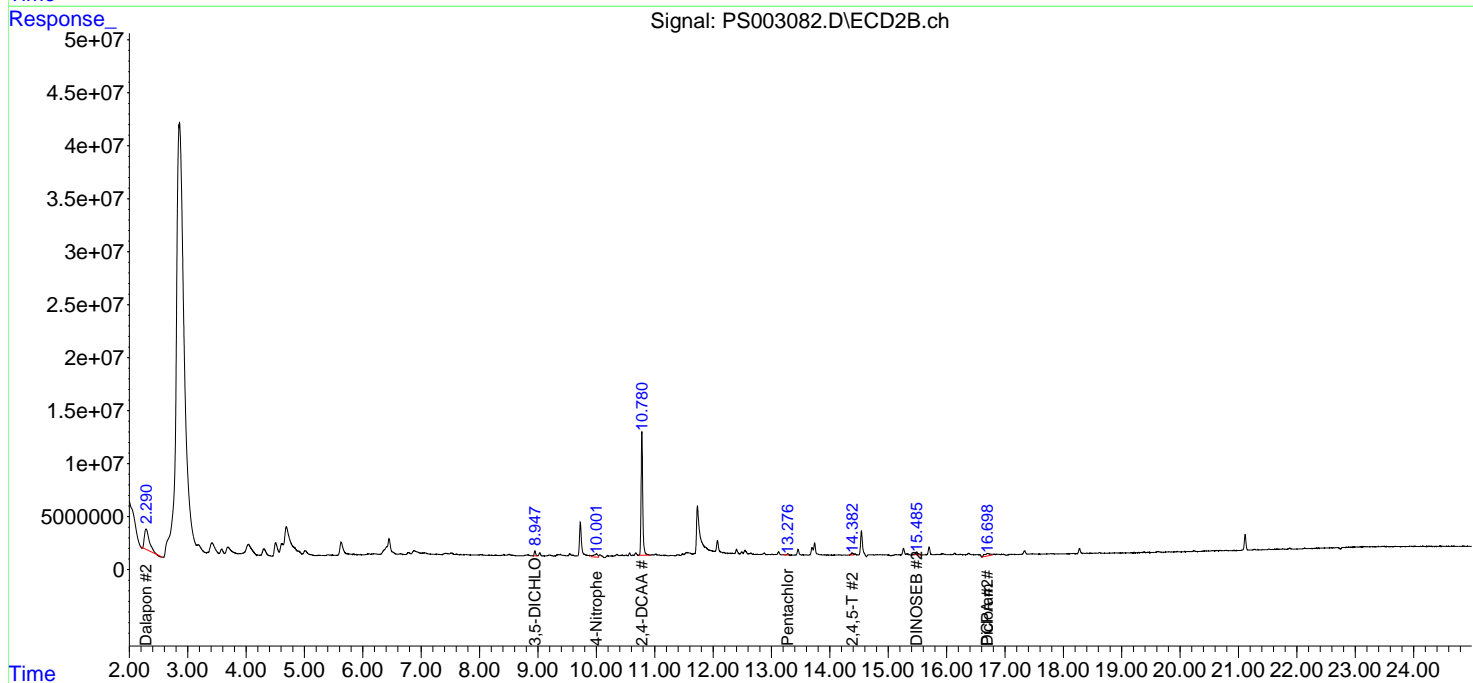
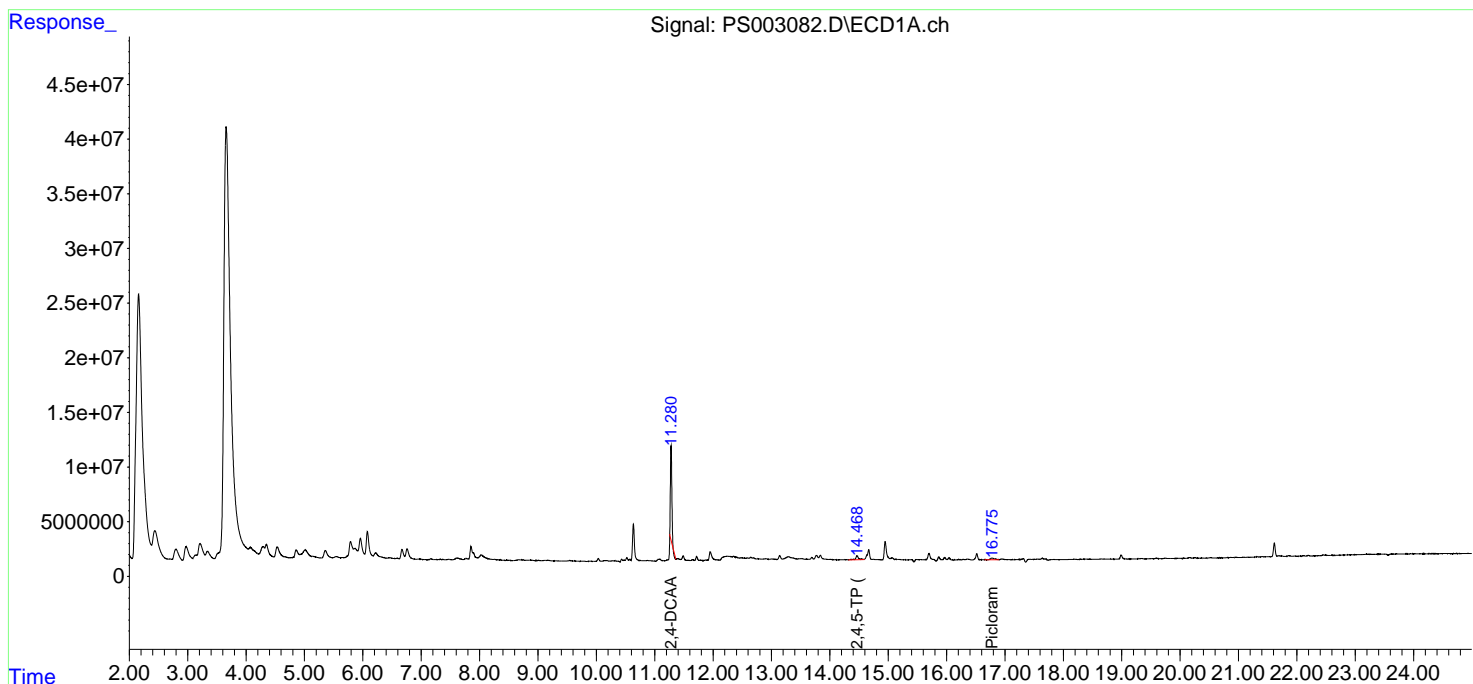
(f)=RT Delta > 1/2 Window (#)=Amounts differ by > 25% (m)=manual int.

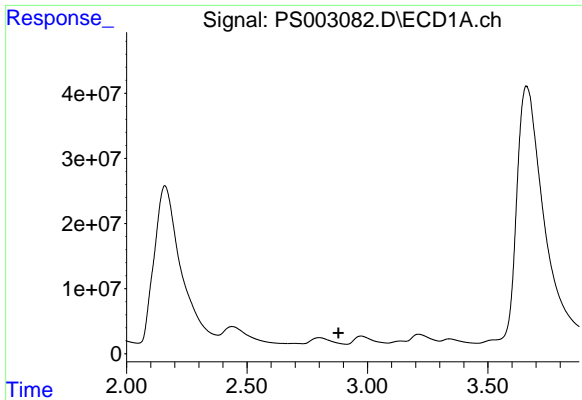
Data Path : Z:\pestpcbsrv\HPCHEM1\ECD_S\Data\PS020819\
 Data File : PS003082.D
 Signal(s) : Signal #1: ECD1A.ch Signal #2: ECD2B.ch
 Acq On : 08 Feb 2019 14:19
 Operator : EI\SJ
 Sample : K1389-04
 Misc :
 ALS Vial : 11 Sample Multiplier: 1

Instrument :
 ECD_S
 ClientSampled :
 M-4

Integration File signal 1: autoint1.e
 Integration File signal 2: autoint2.e
 Quant Time: Feb 08 22:12:22 2019
 Quant Method : Z:\pestpcbsrv\HPCHEM1\ECD_S\Method\PS012819.M
 Quant Title : 8080.M
 QLast Update : Tue Jan 29 06:11:45 2019
 Response via : Initial Calibration
 Integrator: ChemStation

Volume Inj. : 2 µl
 Signal #1 Phase : Rtx-CLPesticides Signal #2 Phase: Rtx-CLPesticides2
 Signal #1 Info : 30M x 0.32mm x0.5 Signal #2 Info : 30M x 0.32mm x 0.25µm

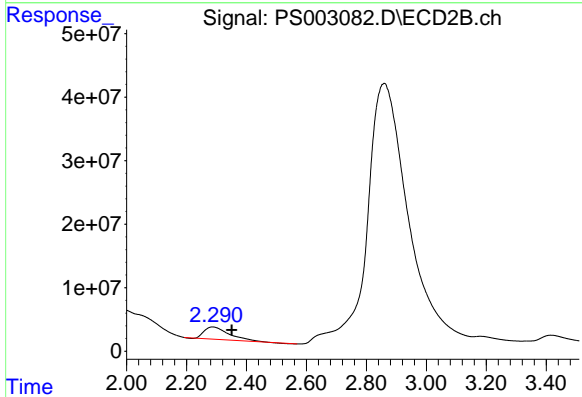




#1 Dalapon

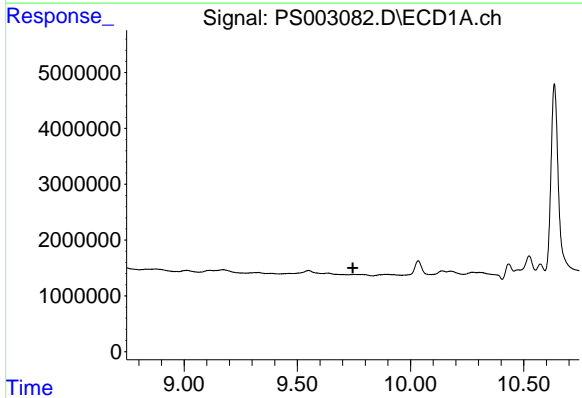
R.T.: 0.000 min
 Exp R.T.: 2.880 min
 Response: 0
 Conc: N.D.

Instrument :
 ECD_S
 ClientSampled :
 M-4



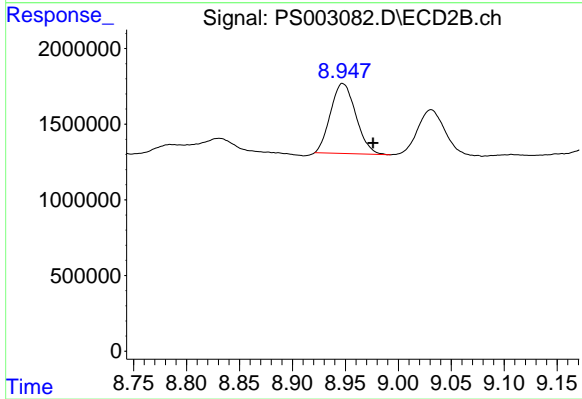
#1 Dalapon

R.T.: 2.287 min
 Delta R.T.: -0.064 min
 Response: 109088744
 Conc: 203.55 ng/ml



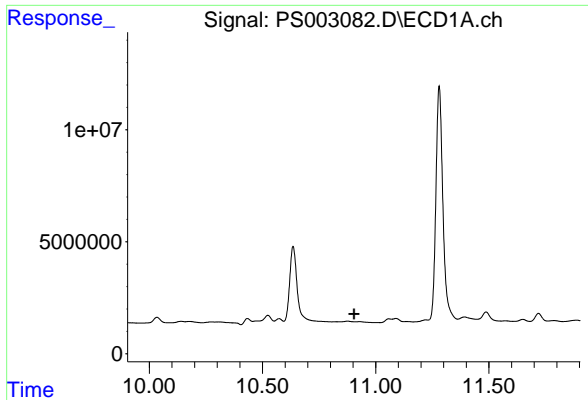
#2 3,5-DICHLOROBENZOIC ACID

R.T.: 0.000 min
 Exp R.T.: 9.745 min
 Response: 0
 Conc: N.D.



#2 3,5-DICHLOROBENZOIC ACID

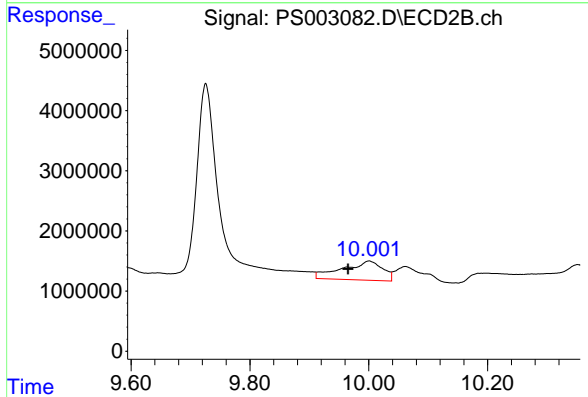
R.T.: 8.948 min
 Delta R.T.: -0.029 min
 Response: 7659006
 Conc: 13.59 ng/ml



#3 4-Nitrophenol

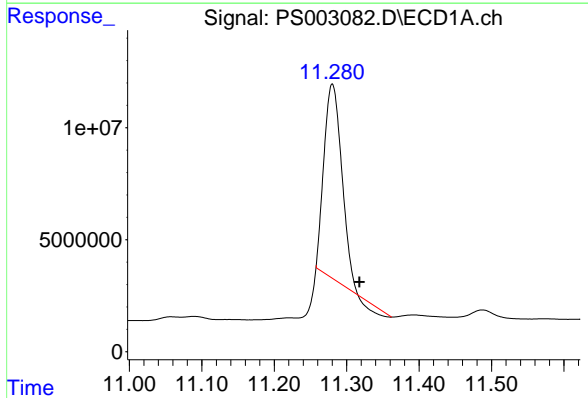
R.T.: 0.000 min
 Exp R.T.: 10.904 min
 Response: 0
 Conc: N.D.

Instrument :
 ECD_S
 ClientSampleId :
 M-4



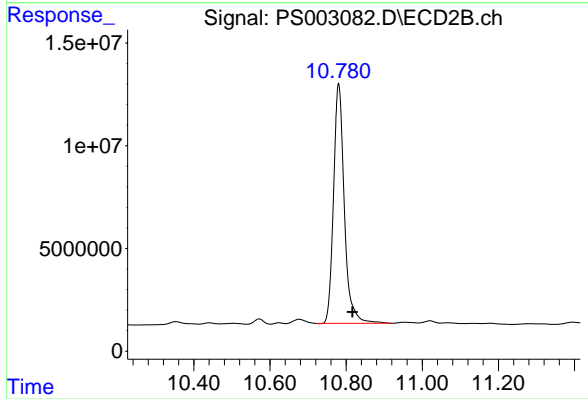
#3 4-Nitrophenol

R.T.: 10.001 min
 Delta R.T.: 0.035 min
 Response: 14905845
 Conc: 71.31 ng/ml



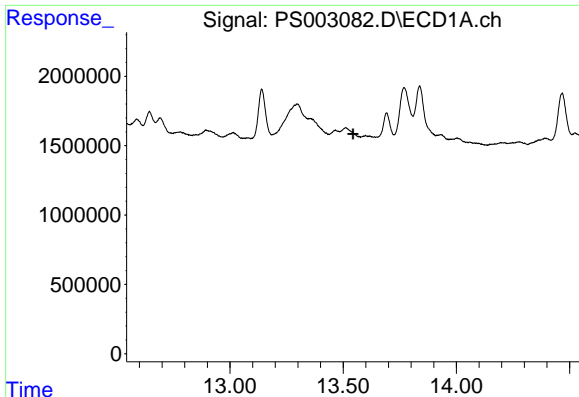
#4 2,4-DCAA

R.T.: 11.280 min
 Delta R.T.: -0.037 min
 Response: 143191677
 Conc: 377.18 ng/ml



#4 2,4-DCAA

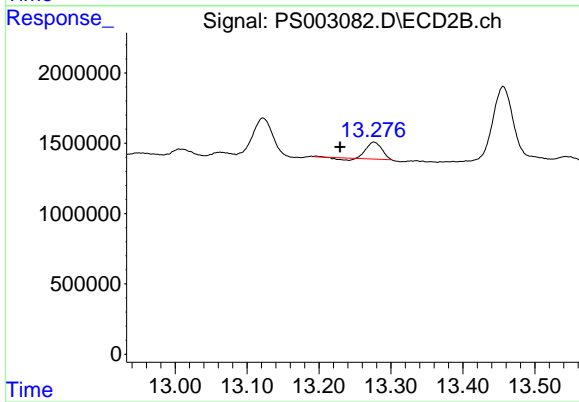
R.T.: 10.780 min
 Delta R.T.: -0.036 min
 Response: 230443480
 Conc: 538.99 ng/ml



#10 Pentachlorophenol

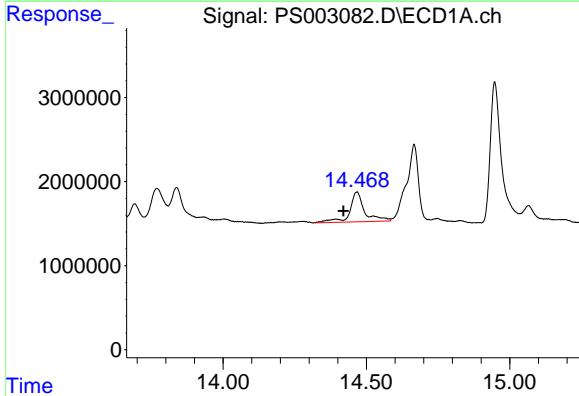
R.T.: 0.000 min
 Exp R.T. : 13.543 min
 Response: 0
 Conc: N.D.

Instrument :
 ECD_S
 ClientSampled :
 M-4



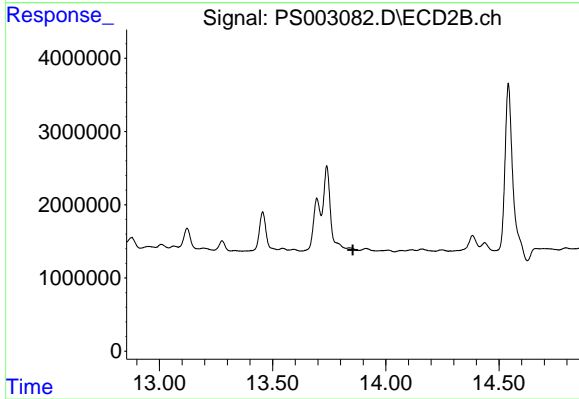
#10 Pentachlorophenol

R.T.: 13.276 min
 Delta R.T.: 0.047 min
 Response: 1584559
 Conc: 0.26 ng/ml



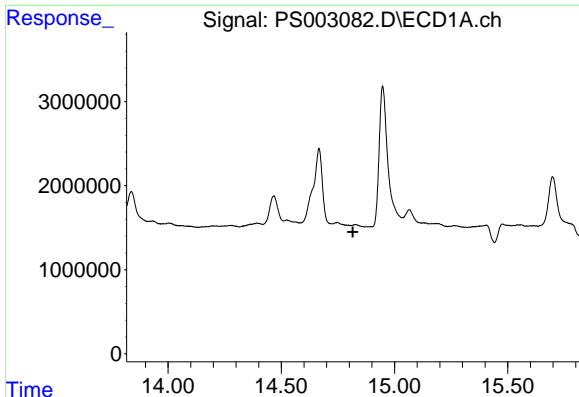
#11 2,4,5-TP (SILVEX)

R.T.: 14.466 min
 Delta R.T.: 0.047 min
 Response: 12908615
 Conc: 5.13 ng/ml



#11 2,4,5-TP (SILVEX)

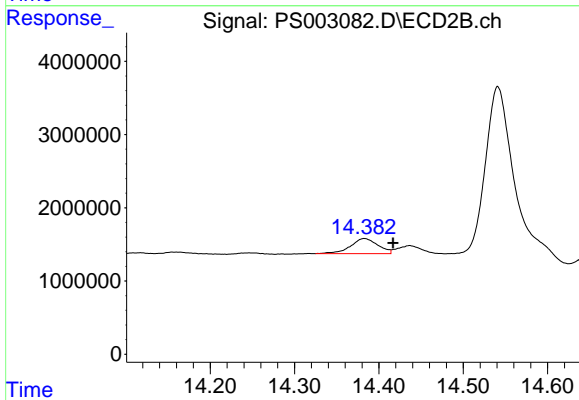
R.T.: 0.000 min
 Exp R.T. : 13.854 min
 Response: 0
 Conc: N.D.



#12 2,4,5-T

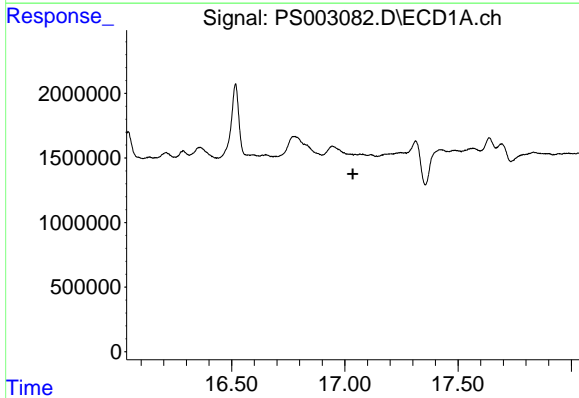
R.T.: 0.000 min
 Exp R.T. : 14.817 min
 Response: 0
 Conc: N.D.

Instrument :
 ECD_S
 ClientSampled :
 M-4



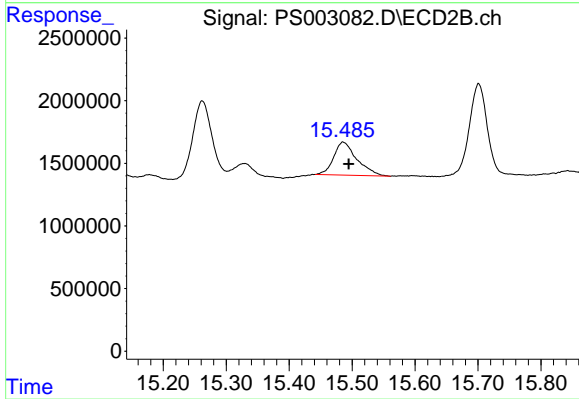
#12 2,4,5-T

R.T.: 14.383 min
 Delta R.T.: -0.034 min
 Response: 4652480
 Conc: 2.43 ng/ml



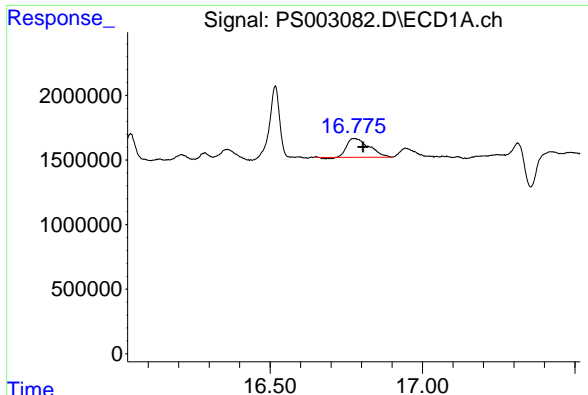
#14 DINOSEB

R.T.: 0.000 min
 Exp R.T. : 17.035 min
 Response: 0
 Conc: N.D.



#14 DINOSEB

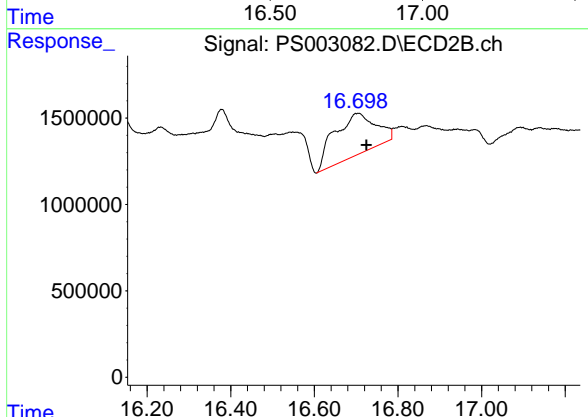
R.T.: 15.486 min
 Delta R.T.: -0.009 min
 Response: 6760462
 Conc: 3.86 ng/ml



#15 Picloram

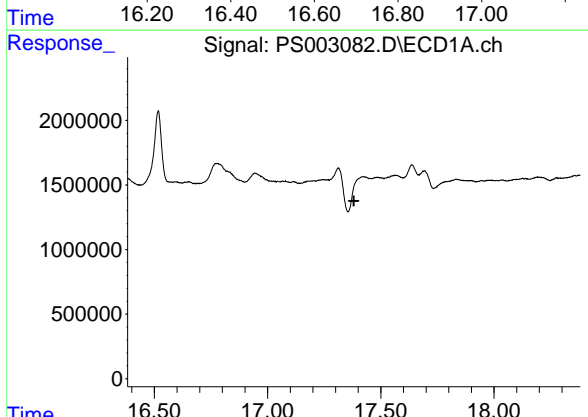
R.T.: 16.776 min
 Delta R.T.: -0.029 min
 Response: 7339622
 Conc: 2.32 ng/ml

Instrument :
 ECD_S
 ClientSampled :
 M-4



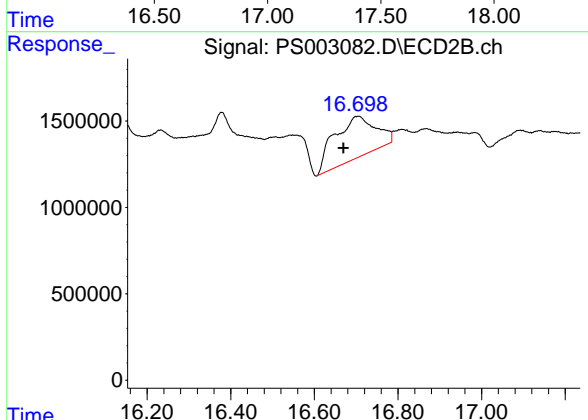
#15 Picloram

R.T.: 16.705 min
 Delta R.T.: -0.020 min
 Response: 16654369
 Conc: 5.54 ng/ml



#16 DCPA

R.T.: 0.000 min
 Exp R.T. : 17.382 min
 Response: 0
 Conc: N.D.



#16 DCPA

R.T.: 16.705 min
 Delta R.T.: 0.035 min
 Response: 16654369
 Conc: 5.38 ng/ml