

Data Path : Z:\pestpcbsrv\HPCHEM1\ECD_S\Data\PS020822\
 Data File : PS018266.D
 Signal(s) : Signal #1: ECD1A.ch Signal #2: ECD2B.ch
 Acq On : 08 Feb 2022 17:06
 Operator : AJ\MA
 Sample : PB142547BS
 Misc :
 ALS Vial : 5 Sample Multiplier: 1

Instrument :
 ECD_S
 ClientSampleId :
 PB142547BS

Integration File signal 1: autoint1.e
 Integration File signal 2: autoint2.e
 Quant Time: Feb 09 04:02:17 2022
 Quant Method : Z:\pestpcbsrv\HPCHEM1\ECD_S\Method\PS020822.M
 Quant Title : 8080.M
 QLast Update : Wed Feb 09 03:44:57 2022
 Response via : Initial Calibration
 Integrator: ChemStation

Volume Inj. : 2 µl
 Signal #1 Phase : Rtx-CLPesticides Signal #2 Phase: Rtx-CLPesticides2
 Signal #1 Info : 30M x 0.32mm x0.5 Signal #2 Info : 30M x 0.32mm x 0.25µm

	Compound	RT#1	RT#2	Resp#1	Resp#2	ng/ml	ng/ml

System Monitoring Compounds							
4) S	2,4-DCAA	7.029	6.640	799.1E6	314.5E6	507.971	501.373
Target Compounds							
1) T	Dalapon	2.889	2.406	1156.6E6	360.6E6	460.364	455.352
2) T	3,5-DICHL...	6.272	5.858	1070.5E6	449.2E6	478.537	473.331
3) T	4-Nitroph...	6.863	6.281	400.6E6	186.7E6	454.024	460.985
5) T	DICAMBA	7.213	6.792	3078.5E6	1326.6E6	487.347	489.049
6) T	MCP P	7.378	6.882	218.4E6	102.9E6	47.465	47.461
7) T	MCPA	7.524	7.090	308.7E6	144.9E6	47.389	46.944
8) T	DICHLORPROP	7.898	7.403	762.5E6	331.0E6	483.270	477.647
9) T	2,4-D	8.130	7.695	884.9E6	392.8E6	480.589	473.880
10) T	Pentachlo...	8.420	8.100	10838.5E6	4443.0E6	512.892	514.695
11) T	2,4,5-TP ...	8.972	8.465	4249.2E6	1840.6E6	497.340	496.913
12) T	2,4,5-T	9.257	8.842	4463.3E6	1742.3E6	504.355	492.062
13) T	2,4-DB	9.805	9.345	814.8E6	229.2E6	462.934	481.439
14) T	DINOSEB	10.942	9.662	3271.6E6	1211.2E6	489.950	479.959
15) T	Picloram	10.780	10.649	4743.4E6	2105.2E6	415.178	420.030
16) T	DCPA	11.212	10.586	5554.7E6	2292.6E6	503.953	503.744

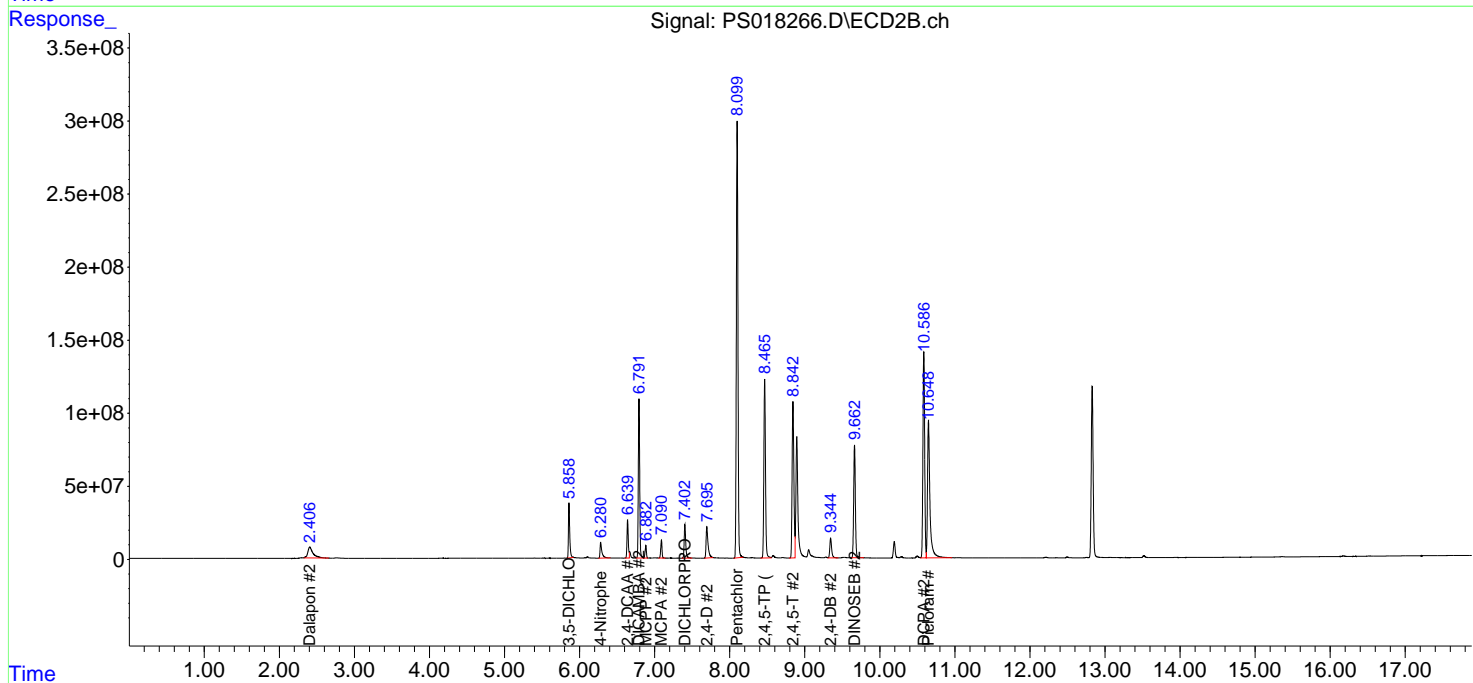
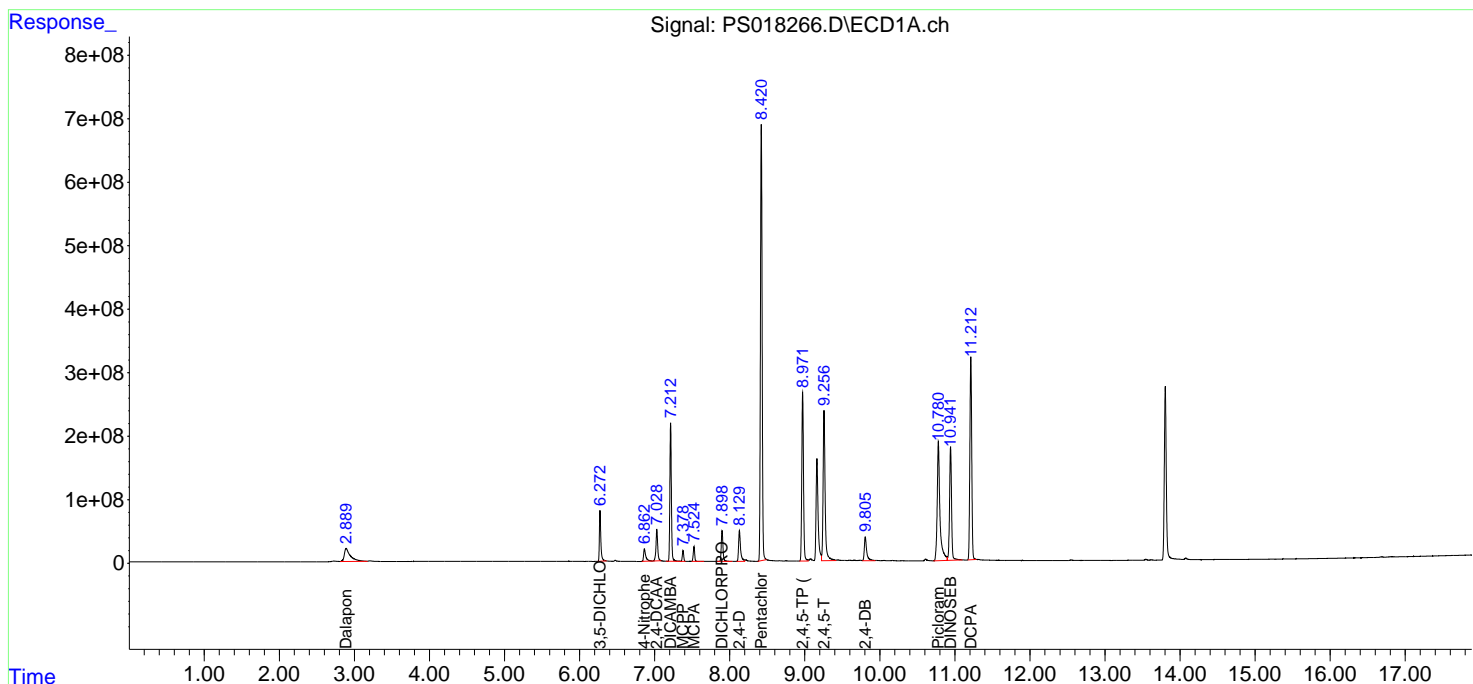
(f)=RT Delta > 1/2 Window (#)=Amounts differ by > 25% (m)=manual int.

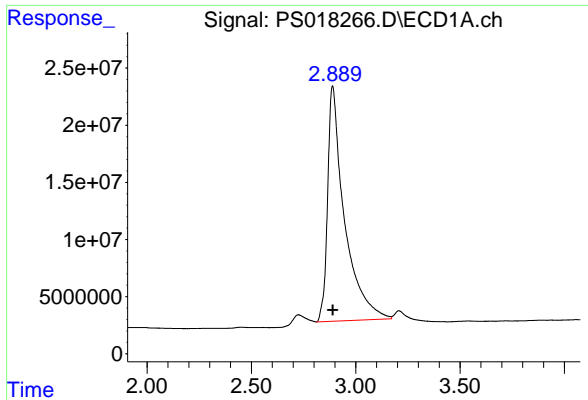
Data Path : Z:\pestpcbsrv\HPCHEM1\ECD_S\Data\PS020822\
 Data File : PS018266.D
 Signal(s) : Signal #1: ECD1A.ch Signal #2: ECD2B.ch
 Acq On : 08 Feb 2022 17:06
 Operator : AJ\MA
 Sample : PB142547BS
 Misc :
 ALS Vial : 5 Sample Multiplier: 1

Instrument :
 ECD_S
 ClientSampleId :
 PB142547BS

Integration File signal 1: autoint1.e
 Integration File signal 2: autoint2.e
 Quant Time: Feb 09 04:02:17 2022
 Quant Method : Z:\pestpcbsrv\HPCHEM1\ECD_S\Method\PS020822.M
 Quant Title : 8080.M
 QLast Update : Wed Feb 09 03:44:57 2022
 Response via : Initial Calibration
 Integrator: ChemStation

Volume Inj. : 2 µl
 Signal #1 Phase : Rtx-CLPesticides Signal #2 Phase: Rtx-CLPesticides2
 Signal #1 Info : 30M x 0.32mm x0.5 Signal #2 Info : 30M x 0.32mm x 0.25µm

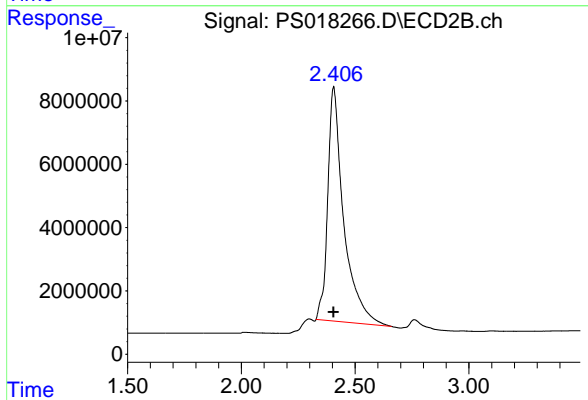




#1 Dalapon

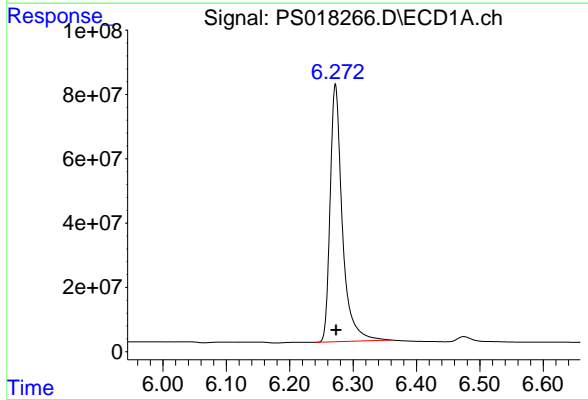
R.T.: 2.889 min
 Delta R.T.: 0.000 min
 Response: 1156597588
 Conc: 460.36 ng/ml

Instrument :
 ECD_S
 ClientSampleId :
 PB142547BS



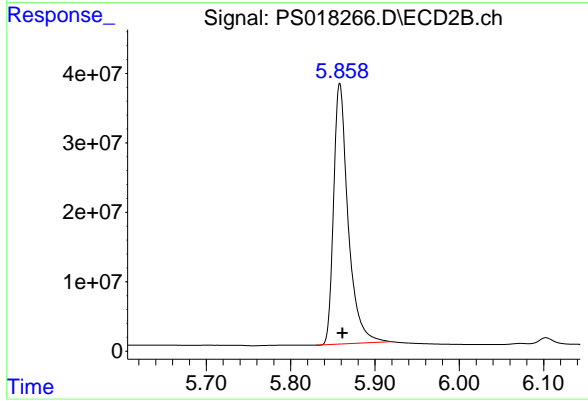
#1 Dalapon

R.T.: 2.406 min
 Delta R.T.: 0.001 min
 Response: 360638410
 Conc: 455.35 ng/ml



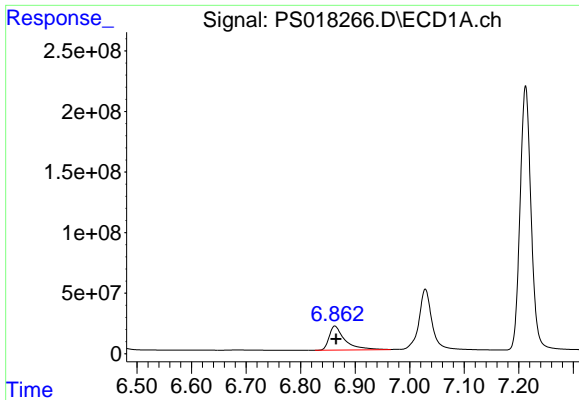
#2 3,5-DICHLOROBENZOIC ACID

R.T.: 6.272 min
 Delta R.T.: -0.001 min
 Response: 1070500942
 Conc: 478.54 ng/ml



#2 3,5-DICHLOROBENZOIC ACID

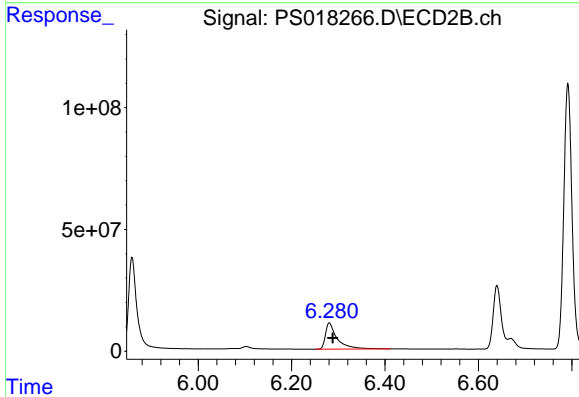
R.T.: 5.858 min
 Delta R.T.: -0.003 min
 Response: 449196677
 Conc: 473.33 ng/ml



#3 4-Nitrophenol

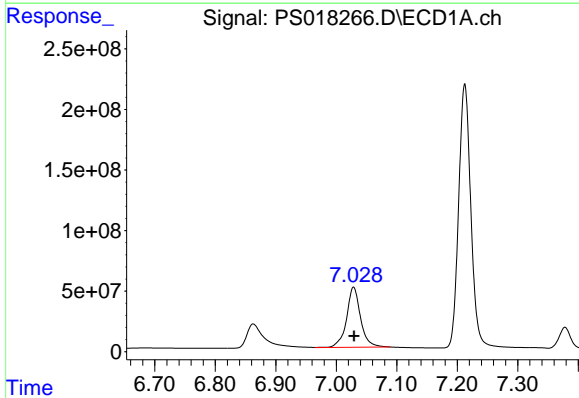
R.T.: 6.863 min
 Delta R.T.: -0.003 min
 Response: 400611063
 Conc: 454.02 ng/ml

Instrument :
 ECD_S
 ClientSampleId :
 PB142547BS



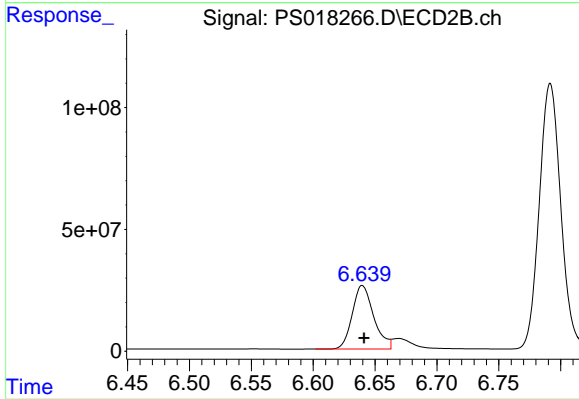
#3 4-Nitrophenol

R.T.: 6.281 min
 Delta R.T.: -0.008 min
 Response: 186699481
 Conc: 460.99 ng/ml



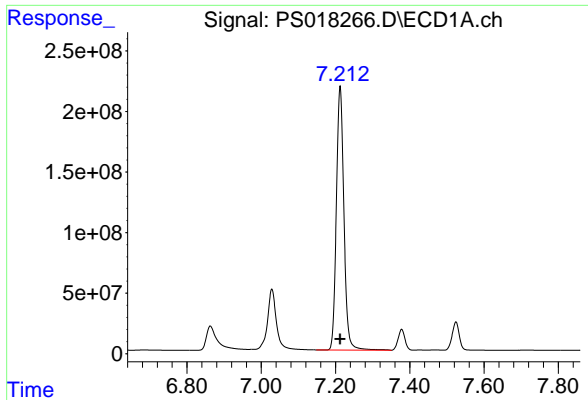
#4 2,4-DCAA

R.T.: 7.029 min
 Delta R.T.: 0.000 min
 Response: 799076163
 Conc: 507.97 ng/ml



#4 2,4-DCAA

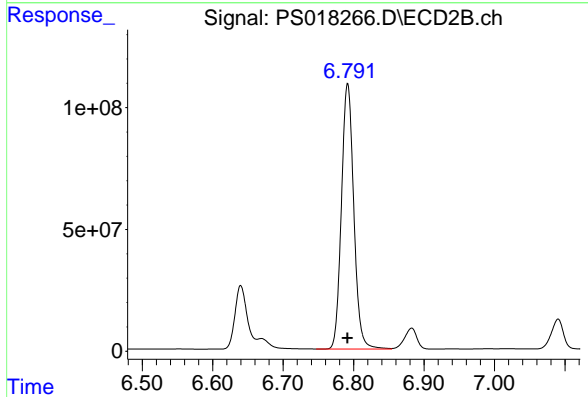
R.T.: 6.640 min
 Delta R.T.: -0.001 min
 Response: 314476252
 Conc: 501.37 ng/ml



#5 DICAMBA

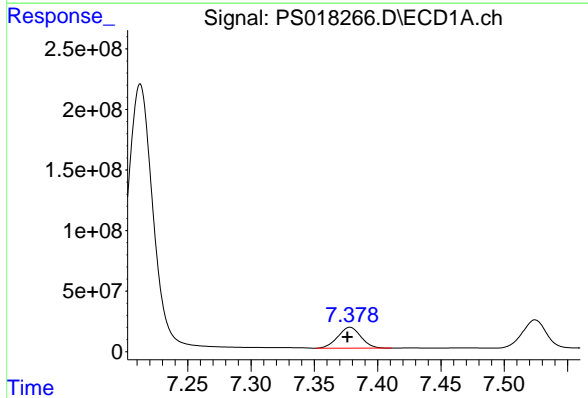
R.T.: 7.213 min
 Delta R.T.: 0.000 min
 Response: 3078464331
 Conc: 487.35 ng/ml

Instrument :
 ECD_S
 ClientSampleId :
 PB142547BS



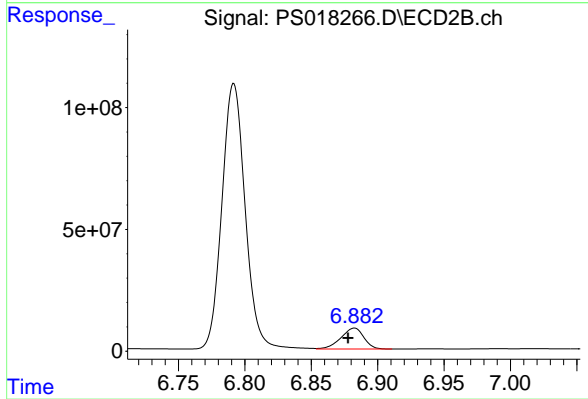
#5 DICAMBA

R.T.: 6.792 min
 Delta R.T.: 0.000 min
 Response: 1326629681
 Conc: 489.05 ng/ml



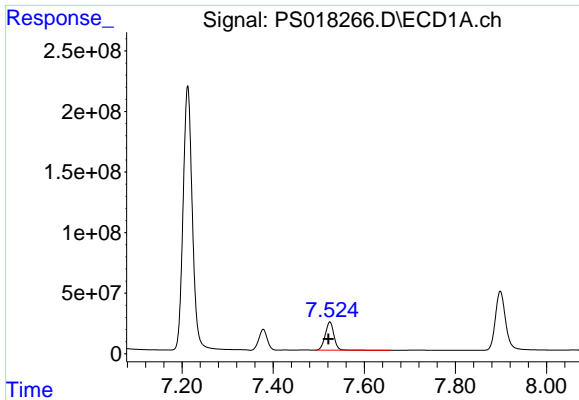
#6 MCP

R.T.: 7.378 min
 Delta R.T.: 0.002 min
 Response: 218442218
 Conc: 47.47 ug/ml



#6 MCP

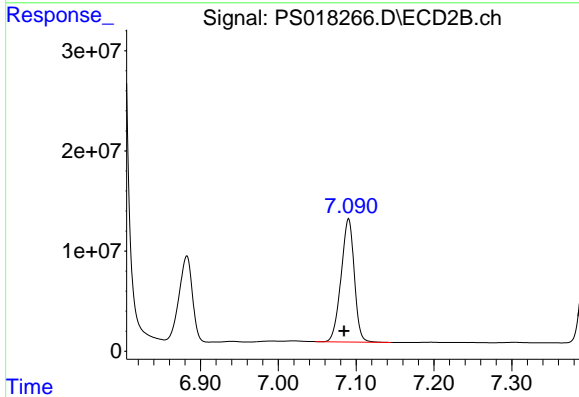
R.T.: 6.882 min
 Delta R.T.: 0.005 min
 Response: 102917007
 Conc: 47.46 ug/ml



#7 MCPA

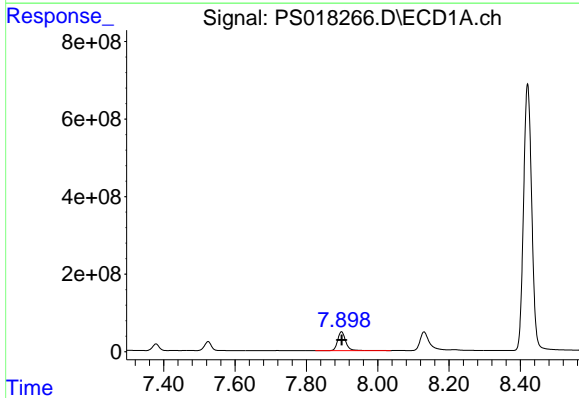
R.T.: 7.524 min
 Delta R.T.: 0.003 min
 Response: 308737928
 Conc: 47.39 ug/ml

Instrument :
 ECD_S
 ClientSampleId :
 PB142547BS



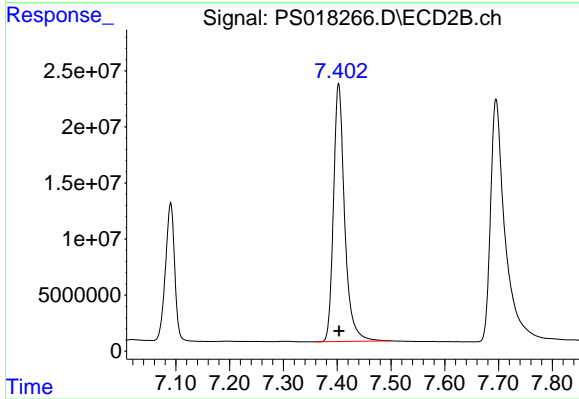
#7 MCPA

R.T.: 7.090 min
 Delta R.T.: 0.006 min
 Response: 144888147
 Conc: 46.94 ug/ml



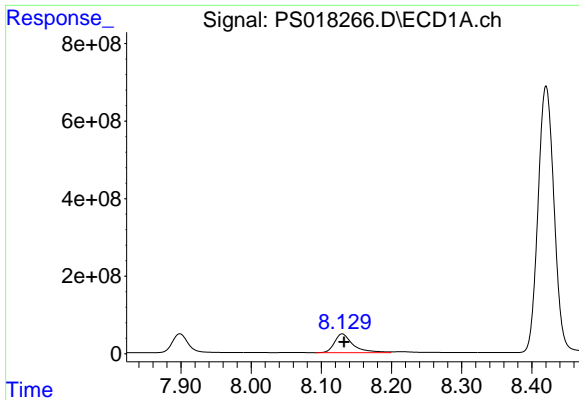
#8 DICHLORPROP

R.T.: 7.898 min
 Delta R.T.: 0.000 min
 Response: 762545515
 Conc: 483.27 ng/ml



#8 DICHLORPROP

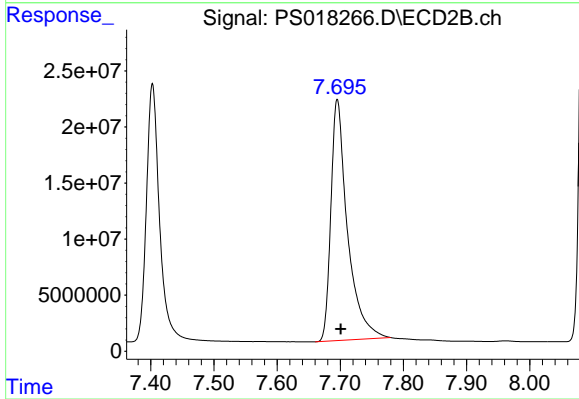
R.T.: 7.403 min
 Delta R.T.: 0.000 min
 Response: 331026047
 Conc: 477.65 ng/ml



#9 2,4-D

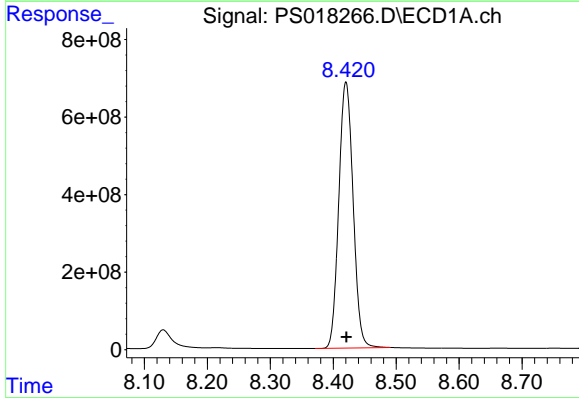
R.T.: 8.130 min
 Delta R.T.: -0.002 min
 Response: 884915567
 Conc: 480.59 ng/ml

Instrument :
 ECD_S
 ClientSampleId :
 PB142547BS



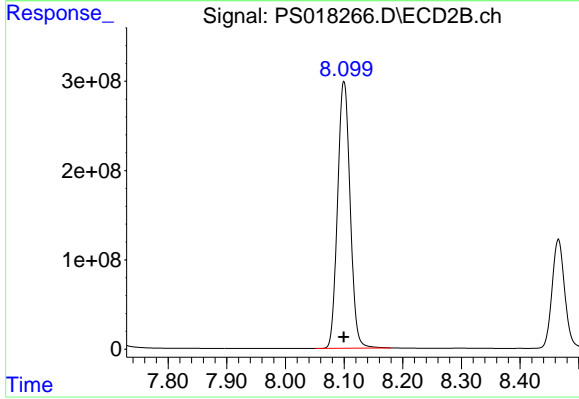
#9 2,4-D

R.T.: 7.695 min
 Delta R.T.: -0.005 min
 Response: 392799834
 Conc: 473.88 ng/ml



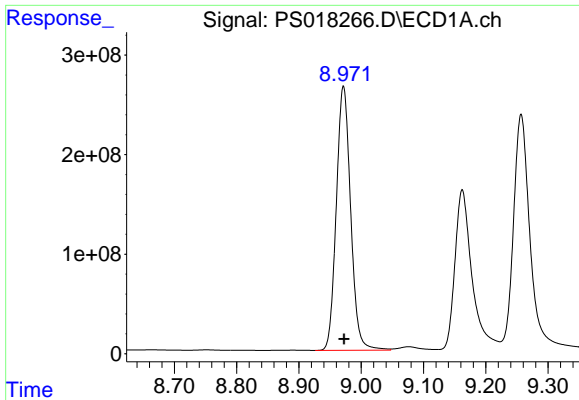
#10 Pentachlorophenol

R.T.: 8.420 min
 Delta R.T.: 0.000 min
 Response: 10838452123
 Conc: 512.89 ng/ml



#10 Pentachlorophenol

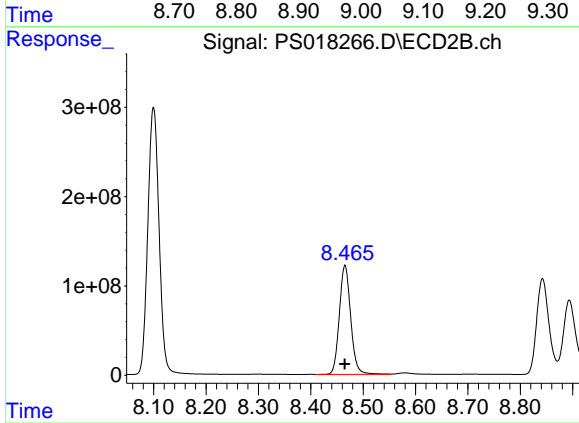
R.T.: 8.100 min
 Delta R.T.: 0.000 min
 Response: 4442963512
 Conc: 514.69 ng/ml



#11 2,4,5-TP (SILVEX)

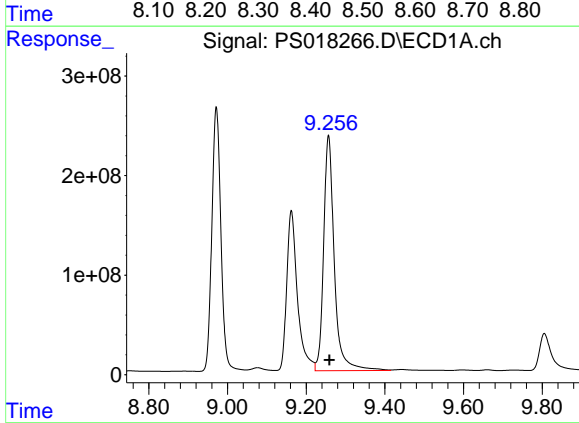
R.T.: 8.972 min
 Delta R.T.: -0.001 min
 Response: 4249187226
 Conc: 497.34 ng/ml

Instrument :
 ECD_S
 ClientSampleId :
 PB142547BS



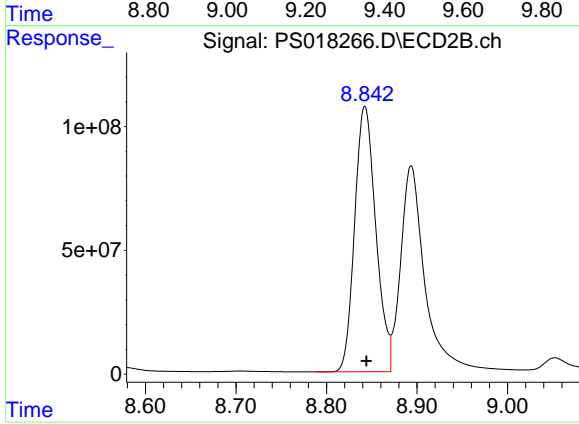
#11 2,4,5-TP (SILVEX)

R.T.: 8.465 min
 Delta R.T.: 0.000 min
 Response: 1840649243
 Conc: 496.91 ng/ml



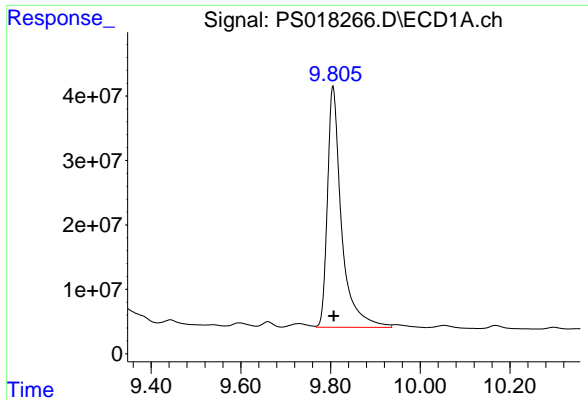
#12 2,4,5-T

R.T.: 9.257 min
 Delta R.T.: -0.002 min
 Response: 4463290768
 Conc: 504.36 ng/ml



#12 2,4,5-T

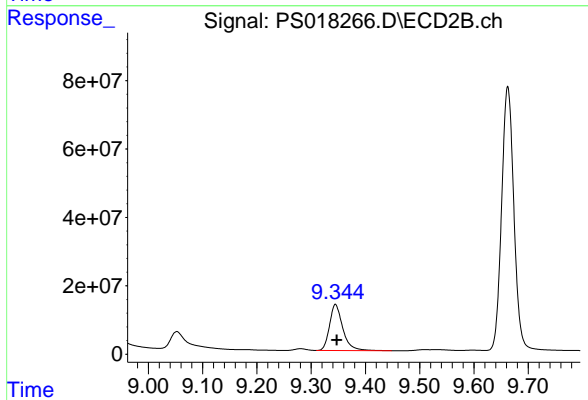
R.T.: 8.842 min
 Delta R.T.: -0.002 min
 Response: 1742250091
 Conc: 492.06 ng/ml



#13 2,4-DB

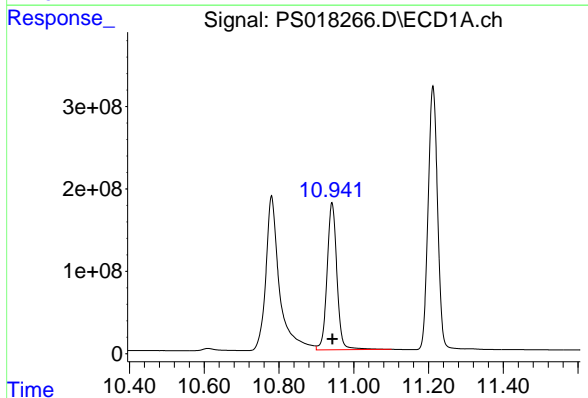
R.T.: 9.805 min
 Delta R.T.: -0.002 min
 Response: 814758510
 Conc: 462.93 ng/ml

Instrument :
 ECD_S
 ClientSampleId :
 PB142547BS



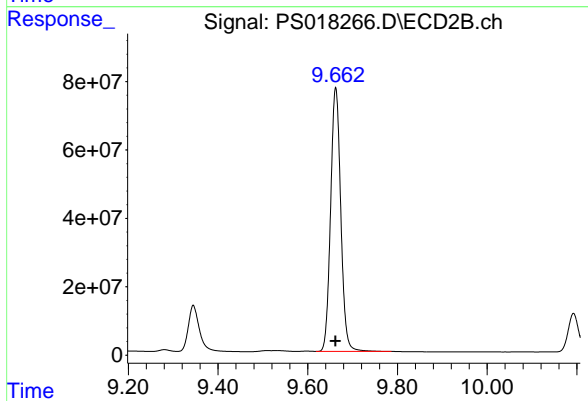
#13 2,4-DB

R.T.: 9.345 min
 Delta R.T.: -0.003 min
 Response: 229195076
 Conc: 481.44 ng/ml



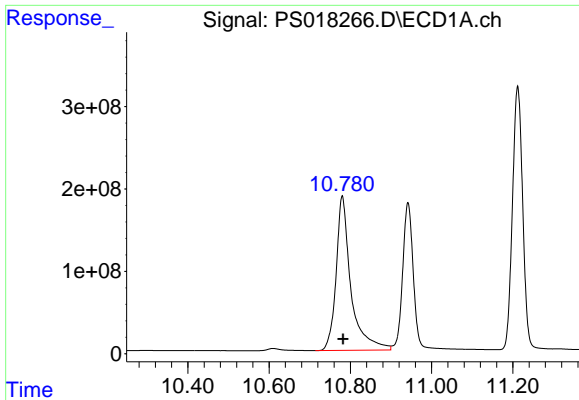
#14 DINOSEB

R.T.: 10.942 min
 Delta R.T.: 0.000 min
 Response: 3271594652
 Conc: 489.95 ng/ml



#14 DINOSEB

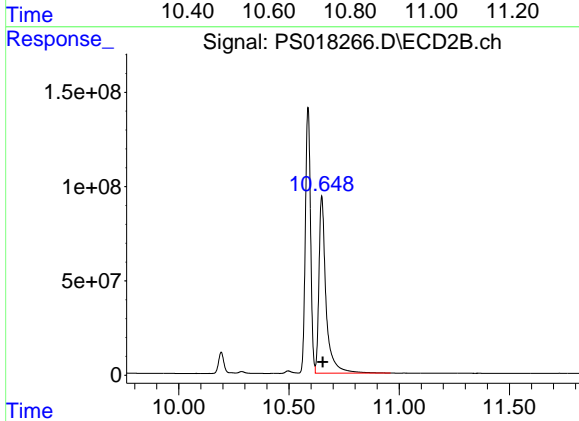
R.T.: 9.662 min
 Delta R.T.: 0.000 min
 Response: 1211240586
 Conc: 479.96 ng/ml



#15 Picloram

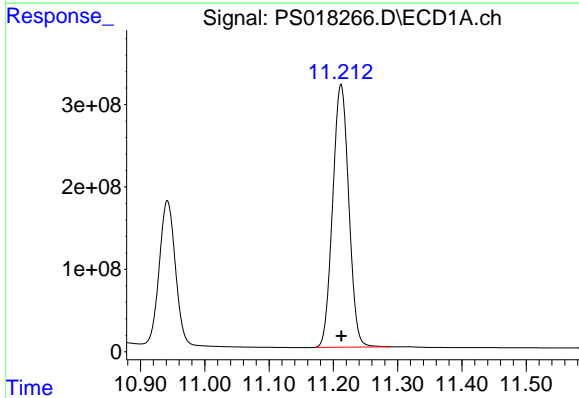
R.T.: 10.780 min
 Delta R.T.: -0.002 min
 Response: 4743357973
 Conc: 415.18 ng/ml

Instrument :
 ECD_S
 ClientSampleId :
 PB142547BS



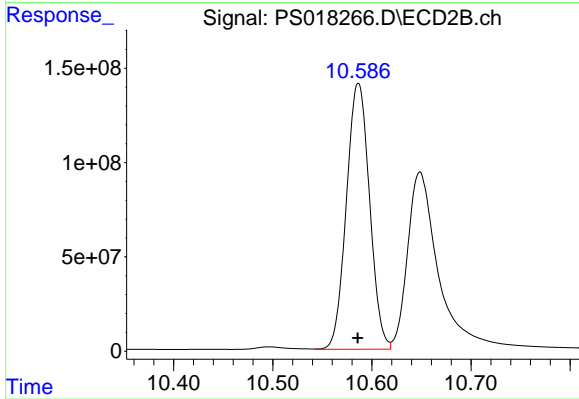
#15 Picloram

R.T.: 10.649 min
 Delta R.T.: -0.004 min
 Response: 2105150208
 Conc: 420.03 ng/ml



#16 DCPA

R.T.: 11.212 min
 Delta R.T.: 0.000 min
 Response: 5554745738
 Conc: 503.95 ng/ml



#16 DCPA

R.T.: 10.586 min
 Delta R.T.: 0.000 min
 Response: 2292583133
 Conc: 503.74 ng/ml