

Data Path : Z:\pestpcbsrv\HPCHEM1\ECD_S\Data\PS021120\
 Data File : PS008787.D
 Signal(s) : Signal #1: ECD1A.ch Signal #2: ECD2B.ch
 Acq On : 11 Feb 2020 16:55
 Operator : DD\AJ
 Sample : PB126747BL
 Misc :
 ALS Vial : 10 Sample Multiplier: 1

Instrument :
 ECD_S
 ClientSampleId :

Integration File signal 1: autoint1.e
 Integration File signal 2: autoint2.e
 Quant Time: Feb 12 03:31:46 2020
 Quant Method : Z:\pestpcbsrv\HPCHEM1\ECD_S\Method\PS020420.M
 Quant Title : 8080.M
 QLast Update : Wed Feb 05 02:36:36 2020
 Response via : Initial Calibration
 Integrator: ChemStation

Volume Inj. : 2 µl
 Signal #1 Phase : Rtx-CLPesticides Signal #2 Phase: Rtx-CLPesticides2
 Signal #1 Info : 30M x 0.32mm x0.5 Signal #2 Info : 30M x 0.32mm x 0.25µm

Compound	RT#1	RT#2	Resp#1	Resp#2	ng/ml	ng/ml

System Monitoring Compounds						
4) S 2,4-DCAA	7.249	6.944	1229.2E6	586.2E6	572.689	632.454
Target Compounds						
1) T Dalapon	0.000	2.595	0	232.4E6	N.D.	193.804
2) T 3,5-DICHL...	0.000	6.118	0	121.3E6	N.D.	88.142
7) T MCPA	7.802	7.412	77267475	40385537	8.995	9.676
8) T DICHLORPROP	0.000	7.697	0	43487532	N.D.	45.647
10) T Pentachlo...	8.679	0.000	66993454	0	2.357	N.D. #
11) T 2,4,5-TP ...	0.000	8.801	0	56254761	N.D.	10.976
12) T 2,4,5-T	0.000	9.264	0	93189569	N.D.	18.034
15) T Picloram	11.046	11.036	415.6E6	225.3E6	27.445	29.851
16) T DCPA	11.507	11.036	43272530	225.3E6	3.087	34.642 #

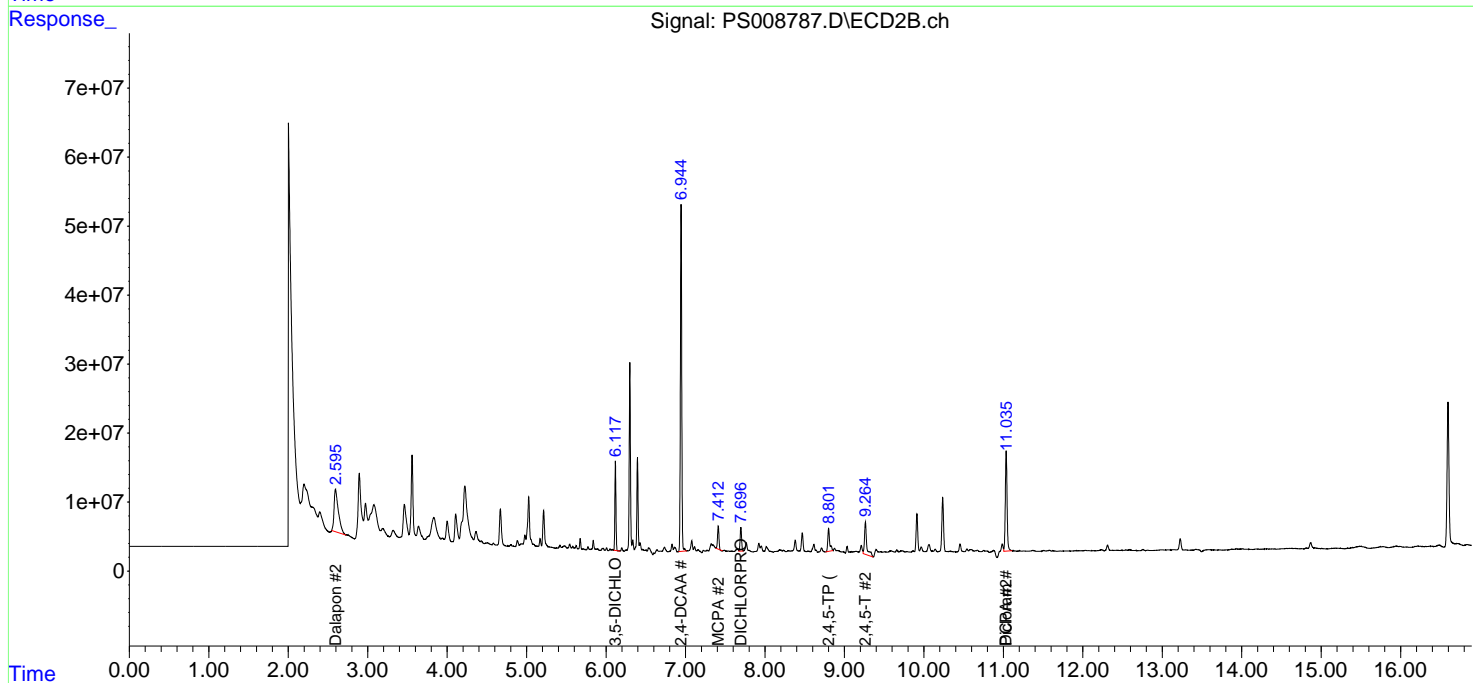
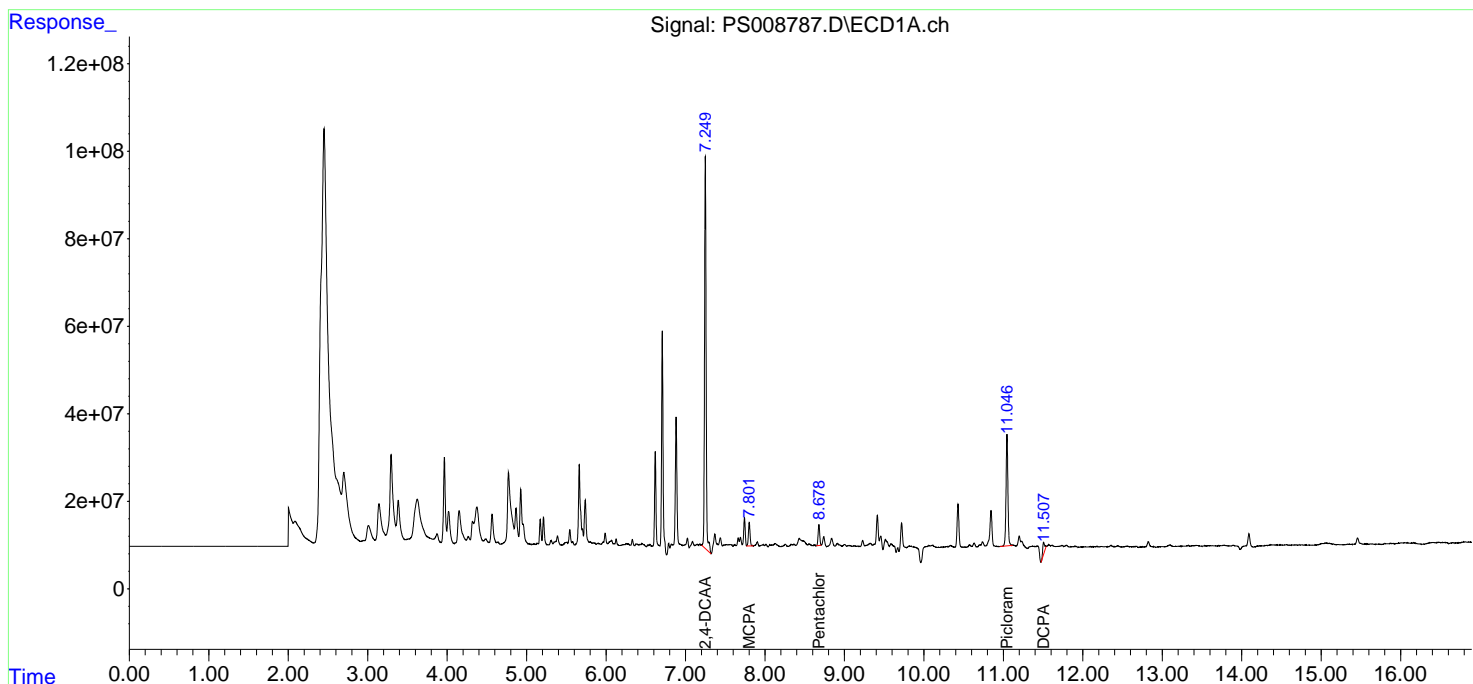
(f)=RT Delta > 1/2 Window (#)=Amounts differ by > 25% (m)=manual int.

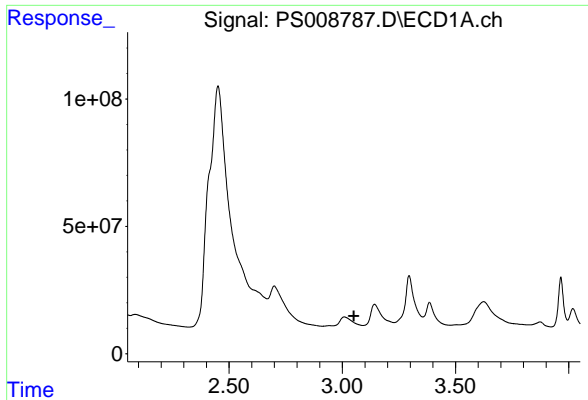
Data Path : Z:\pestpcbsrv\HPCHEM1\ECD_S\Data\PS021120\
 Data File : PS008787.D
 Signal(s) : Signal #1: ECD1A.ch Signal #2: ECD2B.ch
 Acq On : 11 Feb 2020 16:55
 Operator : DD\AJ
 Sample : PB126747BL
 Misc :
 ALS Vial : 10 Sample Multiplier: 1

Instrument :
 ECD_S
 ClientSampled :

Integration File signal 1: autoint1.e
 Integration File signal 2: autoint2.e
 Quant Time: Feb 12 03:31:46 2020
 Quant Method : Z:\pestpcbsrv\HPCHEM1\ECD_S\Method\PS020420.M
 Quant Title : 8080.M
 QLast Update : Wed Feb 05 02:36:36 2020
 Response via : Initial Calibration
 Integrator: ChemStation

Volume Inj. : 2 µl
 Signal #1 Phase : Rtx-CLPesticides Signal #2 Phase: Rtx-CLPesticides2
 Signal #1 Info : 30M x 0.32mm x 0.5 Signal #2 Info : 30M x 0.32mm x 0.25µm

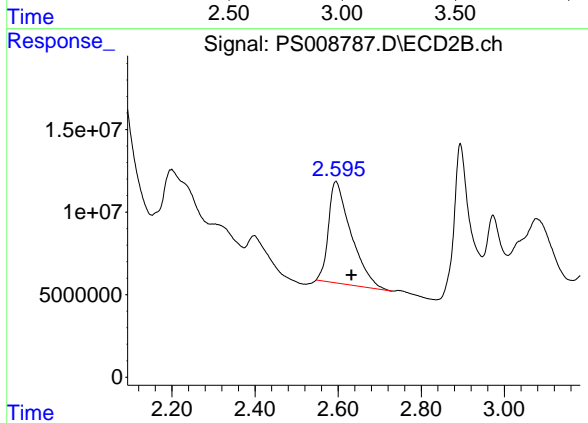




#1 Dalapon

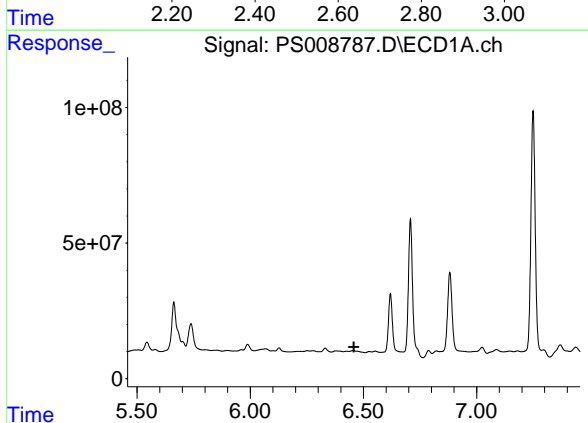
R.T.: 0.000 min
 Exp R.T.: 3.051 min
 Response: 0
 Conc: N.D.

Instrument :
 ECD_S
 ClientSampled :



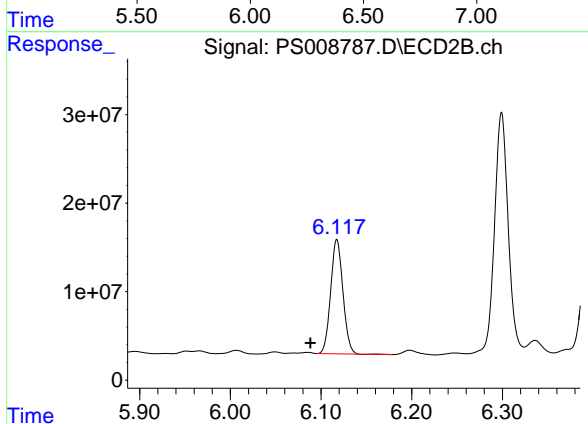
#1 Dalapon

R.T.: 2.595 min
 Delta R.T.: -0.037 min
 Response: 232432287
 Conc: 193.80 ng/ml



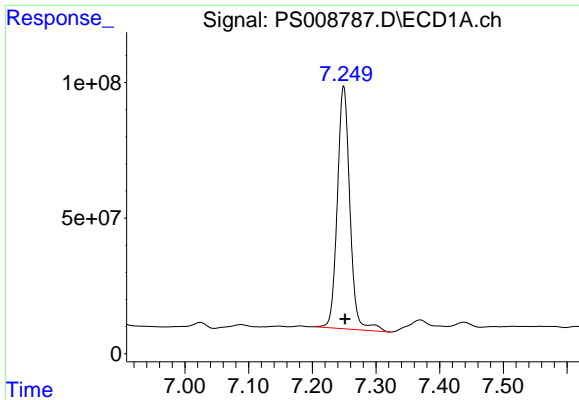
#2 3,5-DICHLOROBENZOIC ACID

R.T.: 0.000 min
 Exp R.T.: 6.458 min
 Response: 0
 Conc: N.D.



#2 3,5-DICHLOROBENZOIC ACID

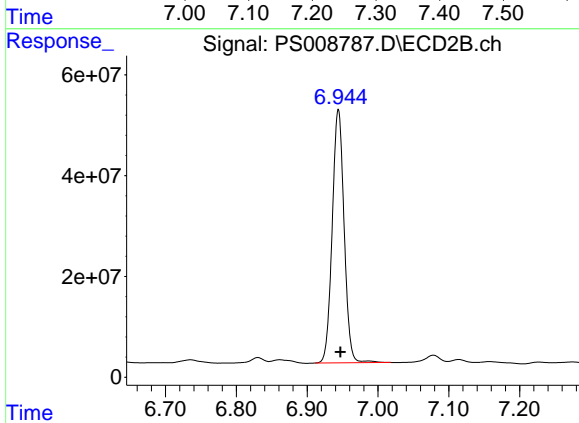
R.T.: 6.118 min
 Delta R.T.: 0.029 min
 Response: 121272513
 Conc: 88.14 ng/ml



#4 2,4-DCAA

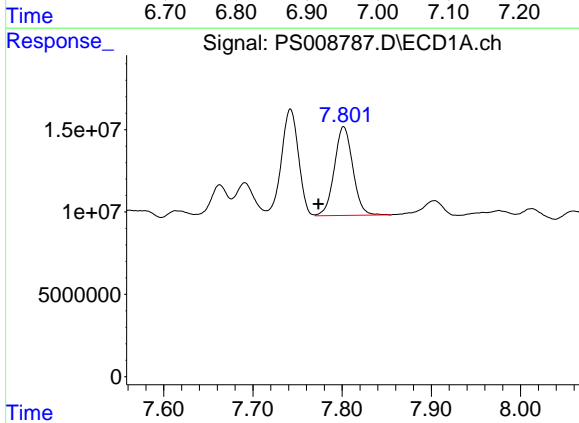
R.T.: 7.249 min
 Delta R.T.: -0.002 min
 Response: 1229167169
 Conc: 572.69 ng/ml

Instrument :
 ECD_S
 ClientSampleId :



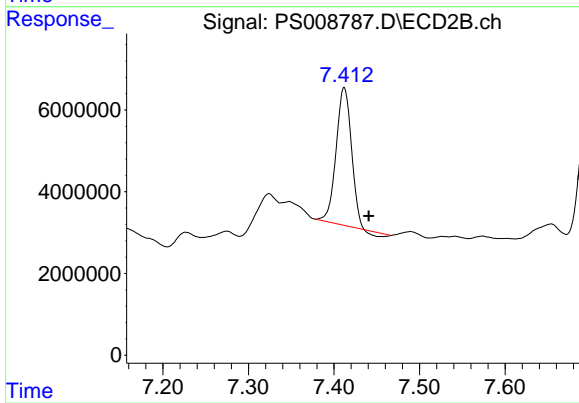
#4 2,4-DCAA

R.T.: 6.944 min
 Delta R.T.: -0.003 min
 Response: 586173416
 Conc: 632.45 ng/ml



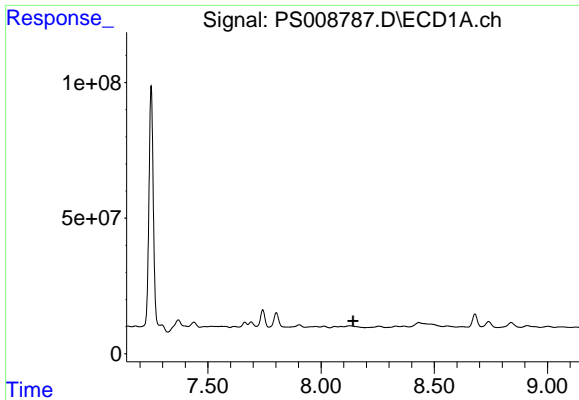
#7 MCPA

R.T.: 7.802 min
 Delta R.T.: 0.028 min
 Response: 77267475
 Conc: 8.99 ug/ml



#7 MCPA

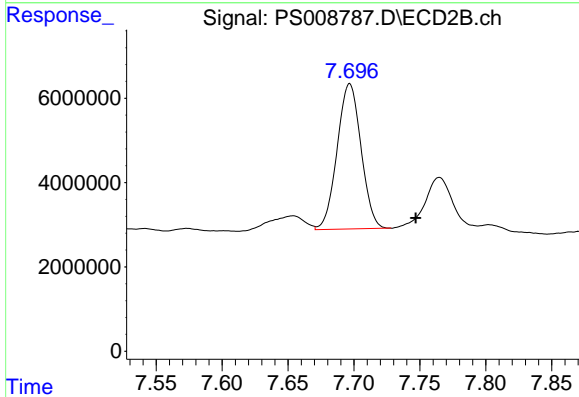
R.T.: 7.412 min
 Delta R.T.: -0.029 min
 Response: 40385537
 Conc: 9.68 ug/ml



#8 DICHLORPROP

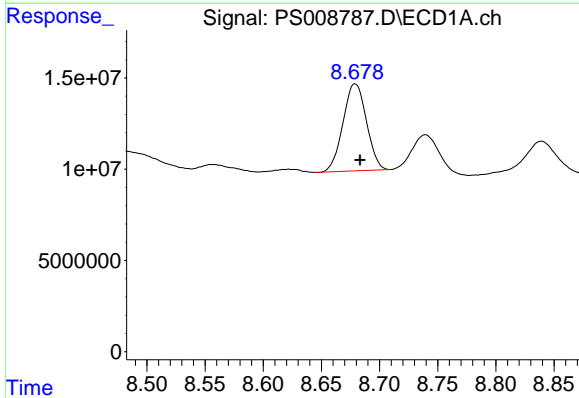
R.T.: 0.000 min
 Exp R.T.: 8.141 min
 Response: 0
 Conc: N.D.

Instrument :
 ECD_S
 ClientSampleId :



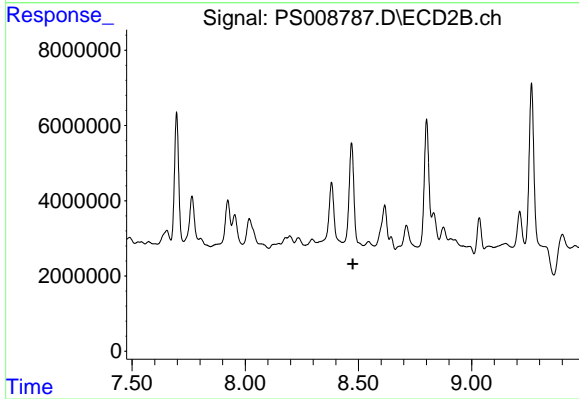
#8 DICHLORPROP

R.T.: 7.697 min
 Delta R.T.: -0.050 min
 Response: 43487532
 Conc: 45.65 ng/ml



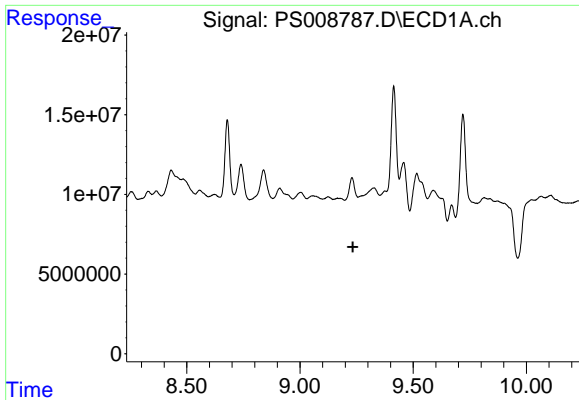
#10 Pentachlorophenol

R.T.: 8.679 min
 Delta R.T.: -0.004 min
 Response: 66993454
 Conc: 2.36 ng/ml



#10 Pentachlorophenol

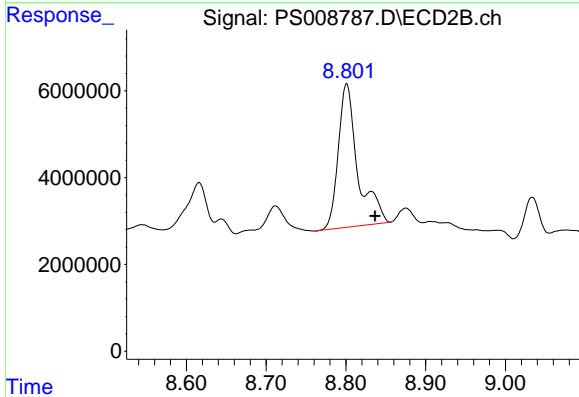
R.T.: 0.000 min
 Exp R.T.: 8.475 min
 Response: 0
 Conc: N.D.



#11 2,4,5-TP (SILVEX)

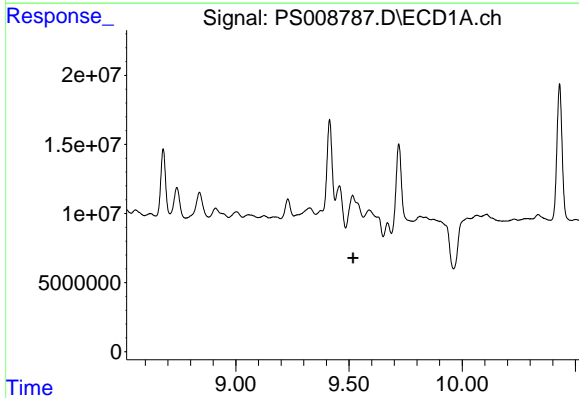
R.T.: 0.000 min
 Exp R.T.: 9.234 min
 Response: 0
 Conc: N.D.

Instrument :
 ECD_S
 ClientSampled :



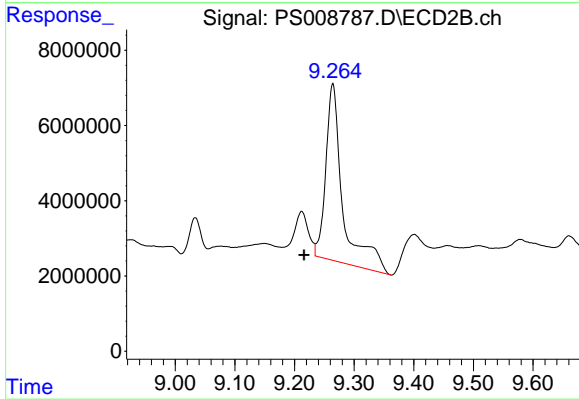
#11 2,4,5-TP (SILVEX)

R.T.: 8.801 min
 Delta R.T.: -0.035 min
 Response: 56254761
 Conc: 10.98 ng/ml



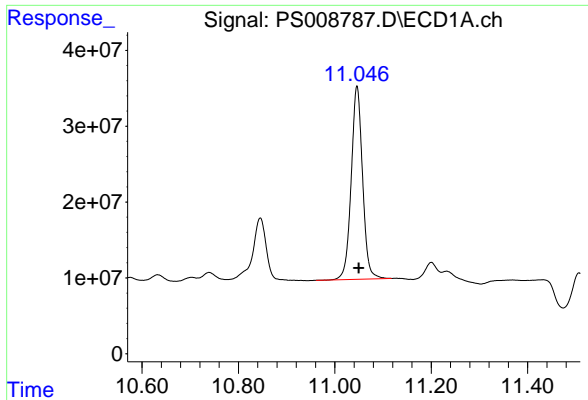
#12 2,4,5-T

R.T.: 0.000 min
 Exp R.T.: 9.517 min
 Response: 0
 Conc: N.D.



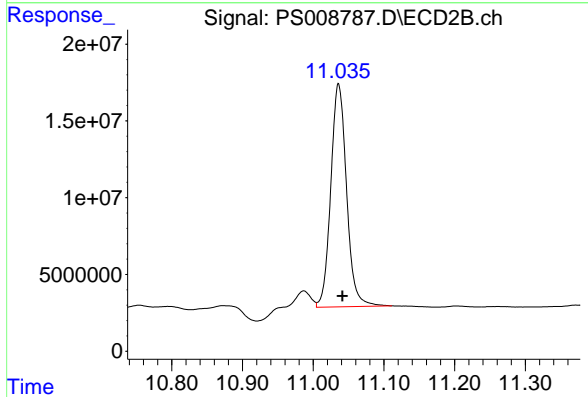
#12 2,4,5-T

R.T.: 9.264 min
 Delta R.T.: 0.048 min
 Response: 93189569
 Conc: 18.03 ng/ml

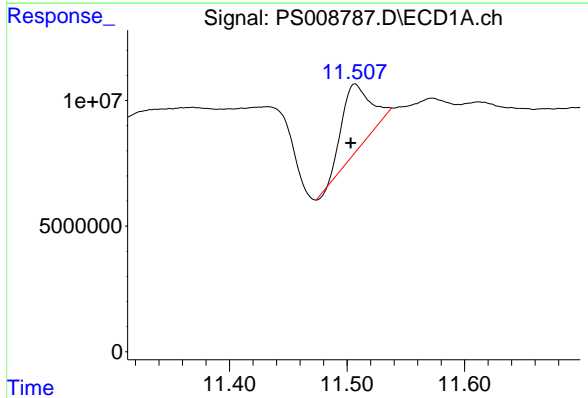


#15 Picloram
 R.T.: 11.046 min
 Delta R.T.: -0.004 min
 Response: 415626189
 Conc: 27.45 ng/ml

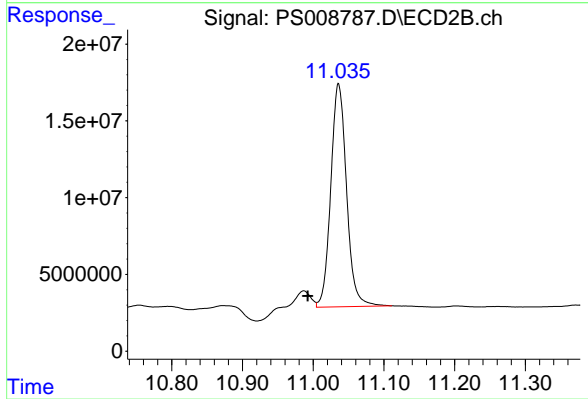
Instrument :
 ECD_S
 ClientSampled :



#15 Picloram
 R.T.: 11.036 min
 Delta R.T.: -0.005 min
 Response: 225318055
 Conc: 29.85 ng/ml



#16 DCPA
 R.T.: 11.507 min
 Delta R.T.: 0.004 min
 Response: 43272530
 Conc: 3.09 ng/ml



#16 DCPA
 R.T.: 11.036 min
 Delta R.T.: 0.044 min
 Response: 225318055
 Conc: 34.64 ng/ml