

Data Path : Z:\pestpcbsrv\HPCHEM1\ECD\_S\Data\PS021120\  
 Data File : PS008796.D  
 Signal(s) : Signal #1: ECD1A.ch Signal #2: ECD2B.ch  
 Acq On : 11 Feb 2020 20:21  
 Operator : DD\AJ  
 Sample : L1373-03  
 Misc :  
 ALS Vial : 19 Sample Multiplier: 1

Instrument :  
 ECD\_S  
 ClientSampleId :

Integration File signal 1: autoint1.e  
 Integration File signal 2: autoint2.e  
 Quant Time: Feb 12 03:34:27 2020  
 Quant Method : Z:\pestpcbsrv\HPCHEM1\ECD\_S\Method\PS020420.M  
 Quant Title : 8080.M  
 QLast Update : Wed Feb 05 02:36:36 2020  
 Response via : Initial Calibration  
 Integrator: ChemStation

Volume Inj. : 2 µl  
 Signal #1 Phase : Rtx-CLPesticides Signal #2 Phase: Rtx-CLPesticides2  
 Signal #1 Info : 30M x 0.32mm x0.5 Signal #2 Info : 30M x 0.32mm x 0.25µm

Compound	RT#1	RT#2	Resp#1	Resp#2	ng/ml	ng/ml
-----						
System Monitoring Compounds						
4) S 2,4-DCAA	7.248	6.942	1003.8E6	479.8E6	467.665	517.706
Target Compounds						
1) T Dalapon	0.000	2.596	0	355.0E6	N.D.	295.989
2) T 3,5-DICHL...	0.000	6.117	0	153.2E6	N.D.	111.381
11) T 2,4,5-TP ...	0.000	8.798	0	47440029	N.D.	9.256
-----						

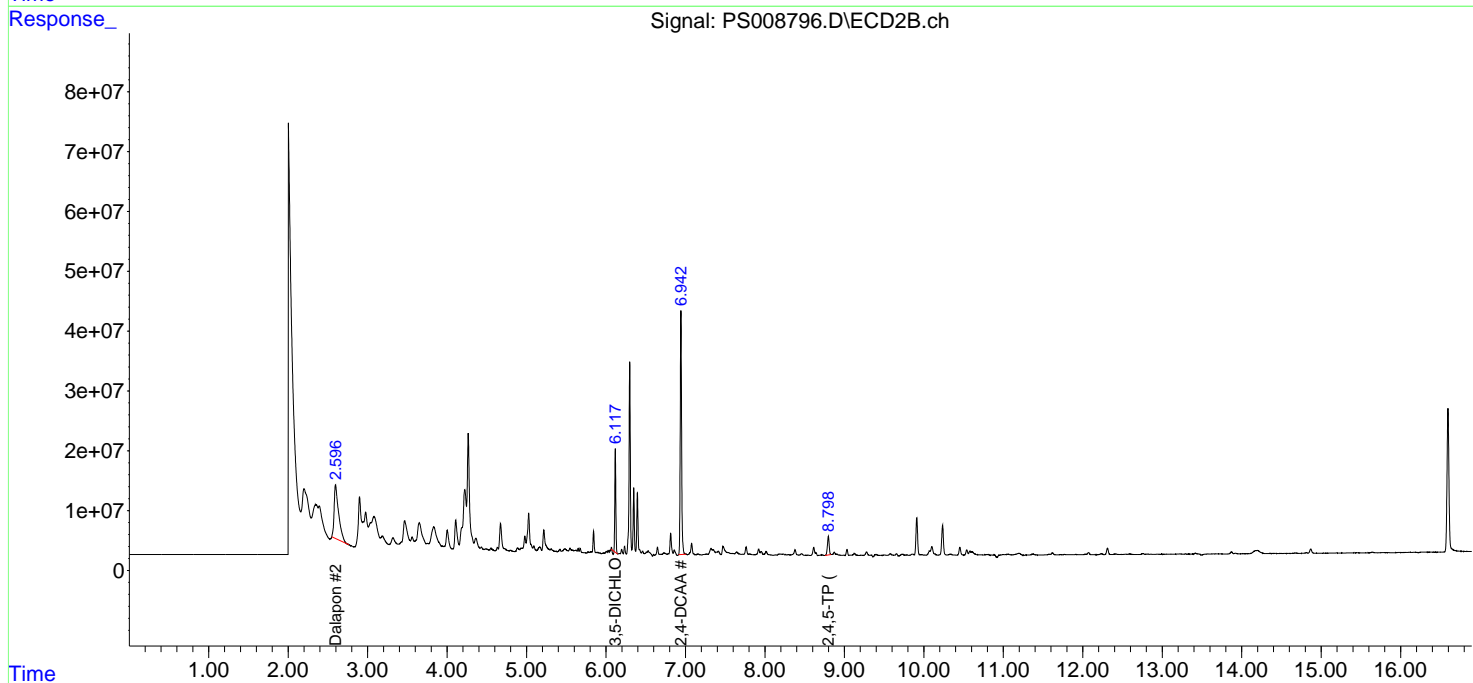
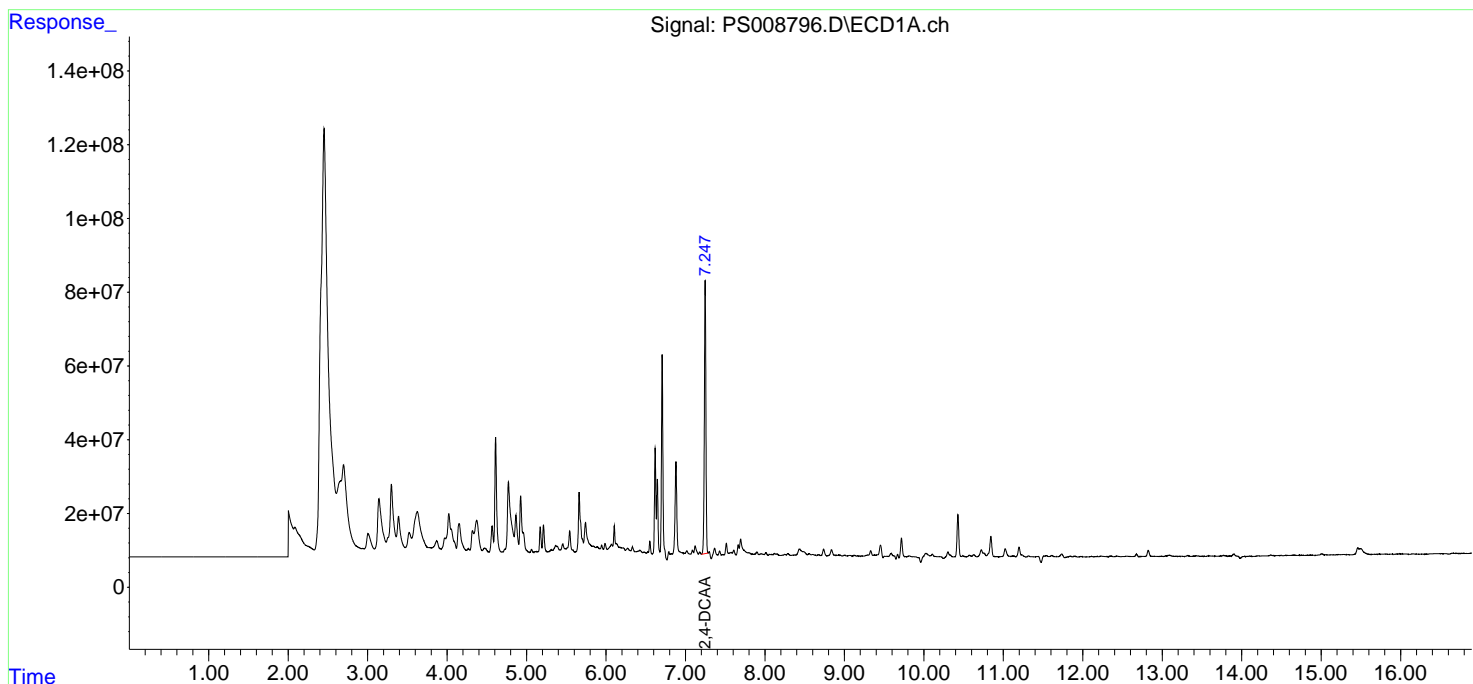
(f)=RT Delta > 1/2 Window (#)=Amounts differ by > 25% (m)=manual int.

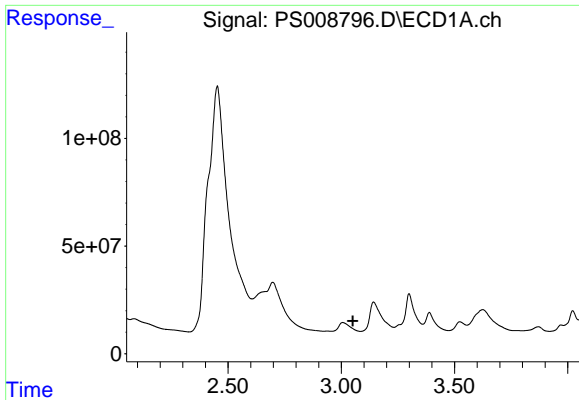
Data Path : Z:\pestpcbsrv\HPCHEM1\ECD\_S\Data\PS021120\  
 Data File : PS008796.D  
 Signal(s) : Signal #1: ECD1A.ch Signal #2: ECD2B.ch  
 Acq On : 11 Feb 2020 20:21  
 Operator : DD\AJ  
 Sample : L1373-03  
 Misc :  
 ALS Vial : 19 Sample Multiplier: 1

Instrument :  
 ECD\_S  
 ClientSampled :

Integration File signal 1: autoint1.e  
 Integration File signal 2: autoint2.e  
 Quant Time: Feb 12 03:34:27 2020  
 Quant Method : Z:\pestpcbsrv\HPCHEM1\ECD\_S\Method\PS020420.M  
 Quant Title : 8080.M  
 QLast Update : Wed Feb 05 02:36:36 2020  
 Response via : Initial Calibration  
 Integrator: ChemStation

Volume Inj. : 2 µl  
 Signal #1 Phase : Rtx-CLPesticides Signal #2 Phase: Rtx-CLPesticides2  
 Signal #1 Info : 30M x 0.32mm x 0.5 Signal #2 Info : 30M x 0.32mm x 0.25µm

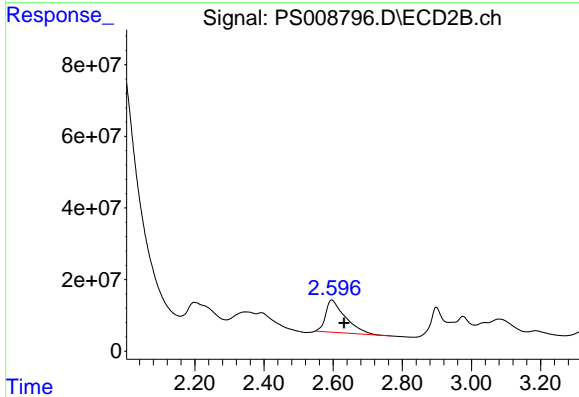




#1 Dalapon

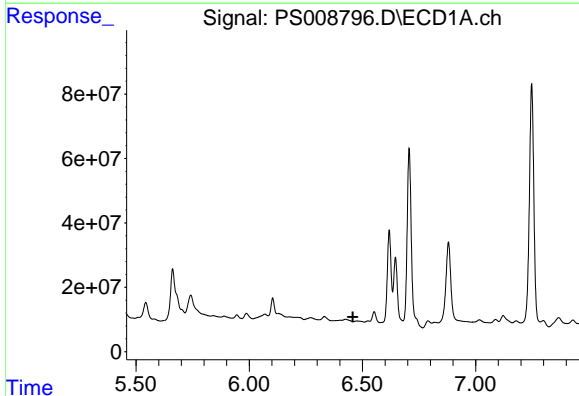
R.T.: 0.000 min  
 Exp R.T. : 3.051 min  
 Response: 0  
 Conc: N.D.

Instrument :  
 ECD\_S  
 ClientSampleId :



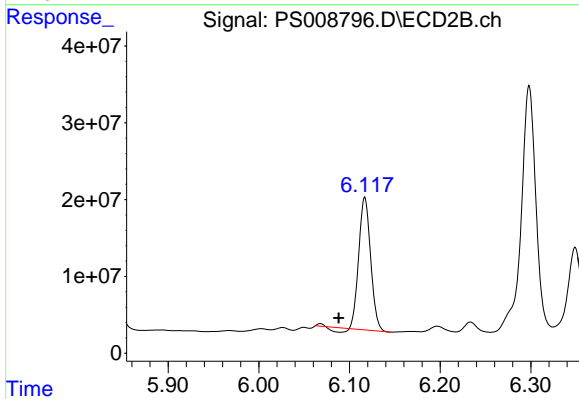
#1 Dalapon

R.T.: 2.596 min  
 Delta R.T.: -0.036 min  
 Response: 354985043  
 Conc: 295.99 ng/ml



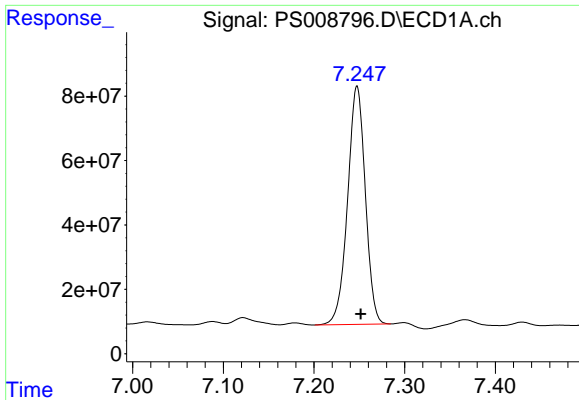
#2 3,5-DICHLOROBENZOIC ACID

R.T.: 0.000 min  
 Exp R.T. : 6.458 min  
 Response: 0  
 Conc: N.D.



#2 3,5-DICHLOROBENZOIC ACID

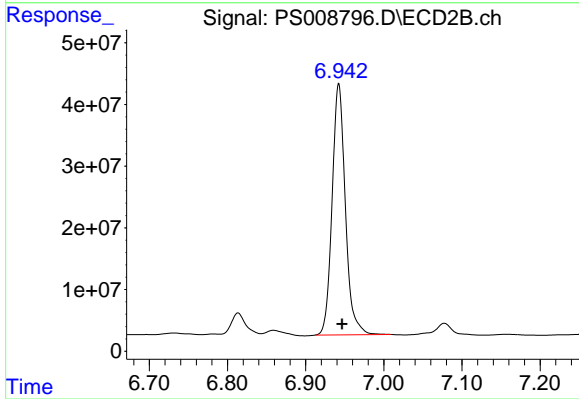
R.T.: 6.117 min  
 Delta R.T.: 0.029 min  
 Response: 153247505  
 Conc: 111.38 ng/ml



#4 2,4-DCAA

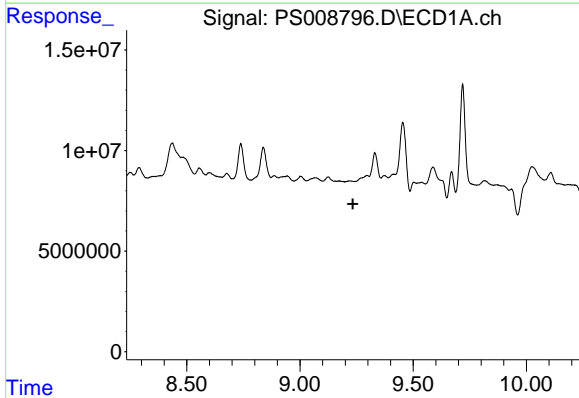
R.T.: 7.248 min  
Delta R.T.: -0.004 min  
Response: 1003753801  
Conc: 467.67 ng/ml

Instrument :  
ECD\_S  
ClientSampled :



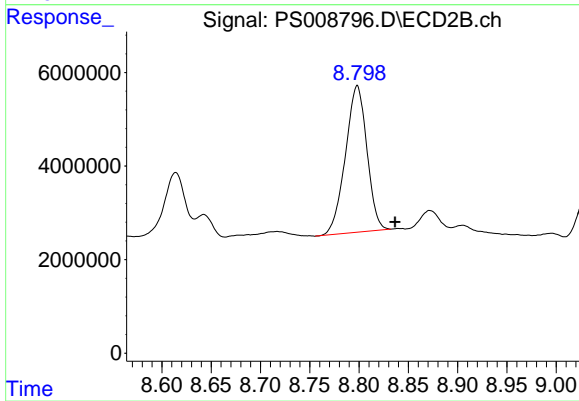
#4 2,4-DCAA

R.T.: 6.942 min  
Delta R.T.: -0.004 min  
Response: 479822600  
Conc: 517.71 ng/ml



#11 2,4,5-TP (SILVEX)

R.T.: 0.000 min  
Exp R.T. : 9.234 min  
Response: 0  
Conc: N.D.



#11 2,4,5-TP (SILVEX)

R.T.: 8.798 min  
Delta R.T.: -0.038 min  
Response: 47440029  
Conc: 9.26 ng/ml