

Data Path : Z:\pestpcbsrv\HPCHEM1\ECD_S\Data\PS021120\
 Data File : PS008798.D
 Signal(s) : Signal #1: ECD1A.ch Signal #2: ECD2B.ch
 Acq On : 11 Feb 2020 21:07
 Operator : DD\AJ
 Sample : HSTDCCC750
 Misc :
 ALS Vial : 3 Sample Multiplier: 1

Instrument :
 ECD_S
 ClientSampleId :

Integration File signal 1: autoint1.e
 Integration File signal 2: autoint2.e
 Quant Time: Feb 12 03:34:59 2020
 Quant Method : Z:\pestpcbsrv\HPCHEM1\ECD_S\Method\PS020420.M
 Quant Title : 8080.M
 QLast Update : Wed Feb 05 02:36:36 2020
 Response via : Initial Calibration
 Integrator: ChemStation

Volume Inj. : 2 µl
 Signal #1 Phase : Rtx-CLPesticides Signal #2 Phase: Rtx-CLPesticides2
 Signal #1 Info : 30M x 0.32mm x0.5 Signal #2 Info : 30M x 0.32mm x 0.25µm

	Compound	RT#1	RT#2	Resp#1	Resp#2	ng/ml	ng/ml

System Monitoring Compounds							
4) S	2,4-DCAA	7.248	6.943	1749.3E6	769.7E6	815.014	830.472
Target Compounds							
1) T	Dalapon	3.049	2.633	1959.4E6	966.7E6	772.544	806.026
2) T	3,5-DICHL...	6.455	6.086	2113.9E6	1058.0E6	748.493	768.993
3) T	4-Nitroph...	7.077	6.543	785.7E6	418.2E6	724.318	735.524
5) T	DICAMBA	7.442	7.114	6154.2E6	3041.7E6	762.993	781.665
6) T	MCP P	7.613	7.212	466.4E6	225.3E6	75.882	76.774
7) T	MCPA	7.763	7.429	643.7E6	321.4E6	74.933	77.009
8) T	DICHLORPROP	8.136	7.742	1491.0E6	735.8E6	753.635	772.337
9) T	2,4-D	8.365	8.036	1606.2E6	871.9E6	750.552	763.822
10) T	Pentachlo...	8.679	8.470	21692.9E6	10326.6E6	763.061	782.963
11) T	2,4,5-TP ...	9.230	8.831	8460.0E6	3997.6E6	756.842	779.994
12) T	2,4,5-T	9.513	9.211	8243.5E6	4009.8E6	748.994	775.950
13) T	2,4-DB	10.067	9.718	1198.8E6	531.4E6	737.026	759.867
14) T	DINOSEB	11.234	10.054	6256.4E6	2835.0E6	741.408	771.841
15) T	Picloram	11.046	11.035	10351.7E6	5299.0E6	683.562	702.029
16) T	DCPA	11.499	10.985	10513.2E6	5110.1E6	749.930	785.670

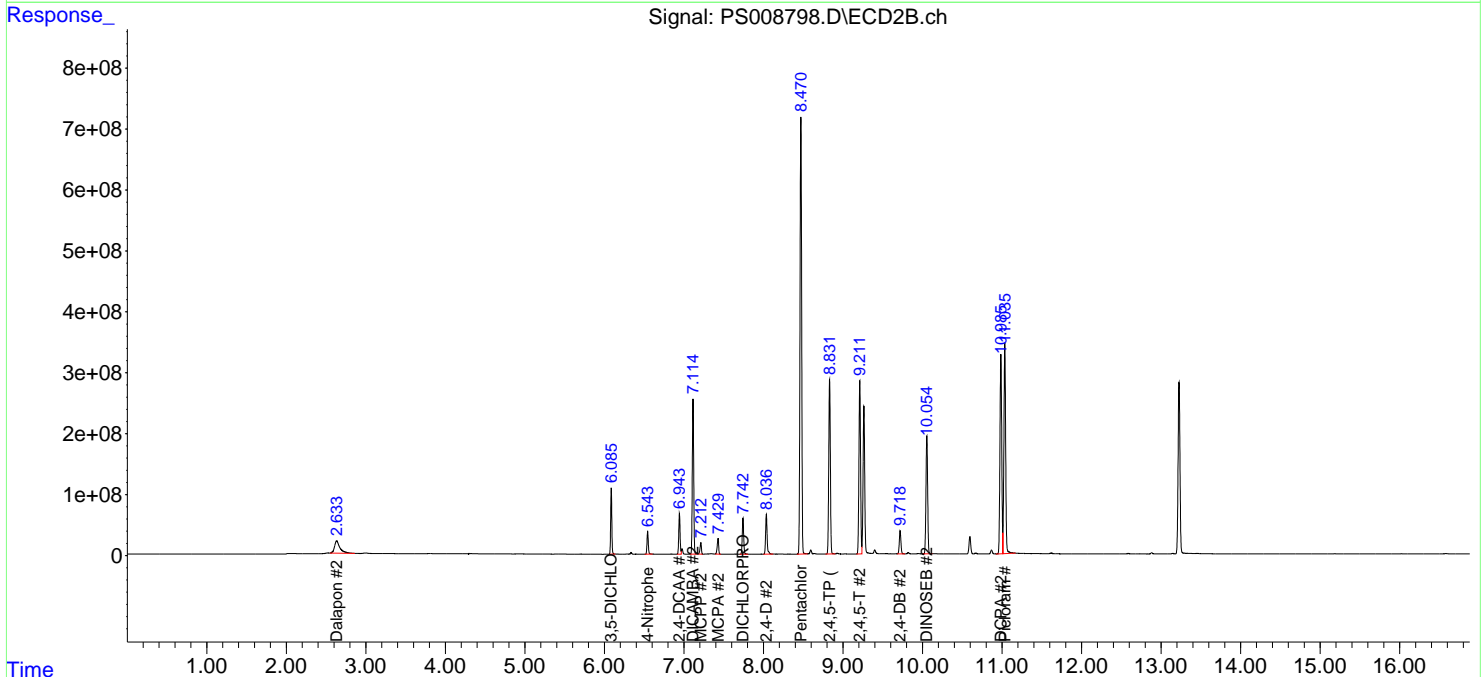
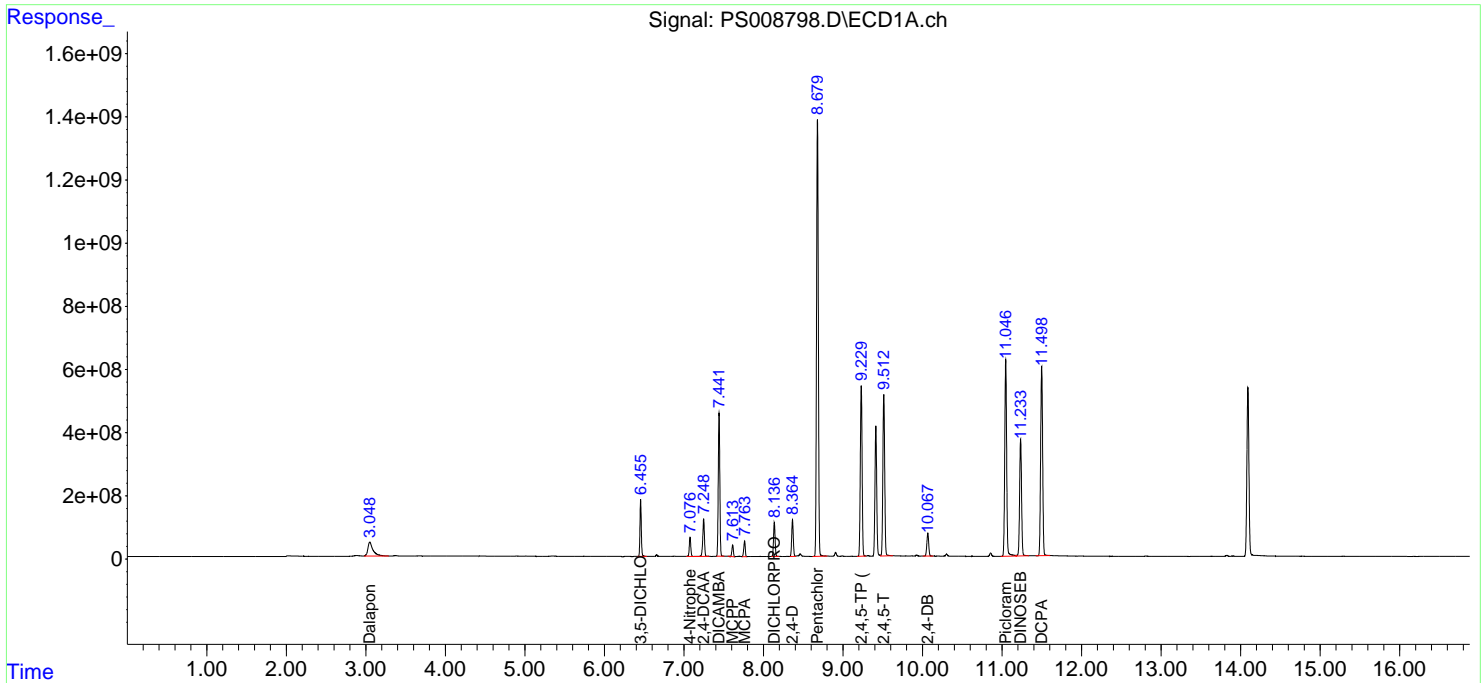
(f)=RT Delta > 1/2 Window (#)=Amounts differ by > 25% (m)=manual int.

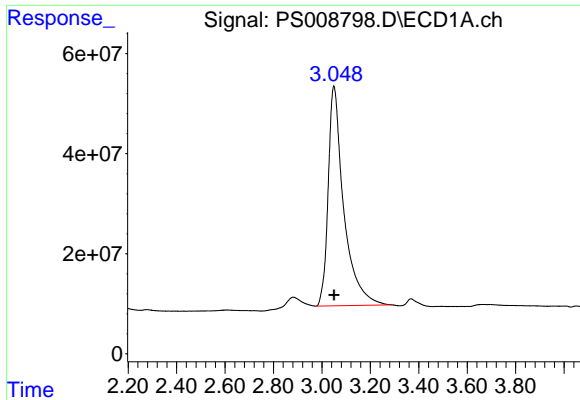
Data Path : Z:\pestpcbsrv\HPCHEM1\ECD_S\Data\PS021120\
 Data File : PS008798.D
 Signal(s) : Signal #1: ECD1A.ch Signal #2: ECD2B.ch
 Acq On : 11 Feb 2020 21:07
 Operator : DD\AJ
 Sample : HSTDCCC750
 Misc :
 ALS Vial : 3 Sample Multiplier: 1

Instrument :
 ECD_S
 ClientSampled :

Integration File signal 1: autoint1.e
 Integration File signal 2: autoint2.e
 Quant Time: Feb 12 03:34:59 2020
 Quant Method : Z:\pestpcbsrv\HPCHEM1\ECD_S\Method\PS020420.M
 Quant Title : 8080.M
 QLast Update : Wed Feb 05 02:36:36 2020
 Response via : Initial Calibration
 Integrator: ChemStation

Volume Inj. : 2 µl
 Signal #1 Phase : Rtx-CLPesticides Signal #2 Phase: Rtx-CLPesticides2
 Signal #1 Info : 30M x 0.32mm x0.5 Signal #2 Info : 30M x 0.32mm x 0.25µm

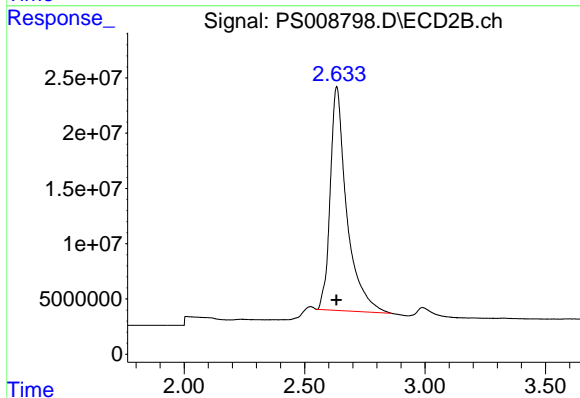




#1 Dalapon

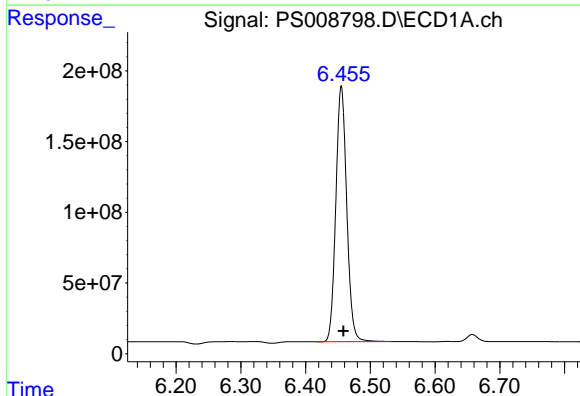
R.T.: 3.049 min
 Delta R.T.: -0.002 min
 Response: 1959389196
 Conc: 772.54 ng/ml

Instrument :
 ECD_S
 ClientSampleId :



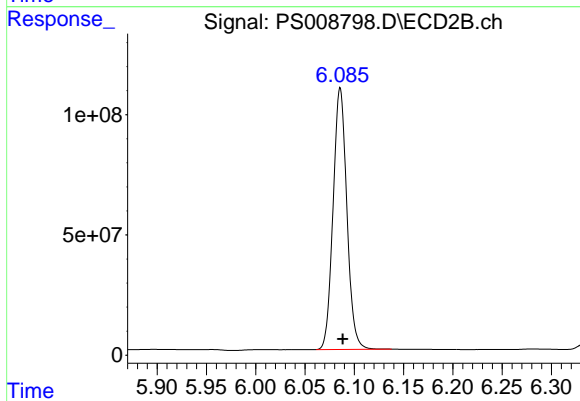
#1 Dalapon

R.T.: 2.633 min
 Delta R.T.: 0.001 min
 Response: 966681742
 Conc: 806.03 ng/ml



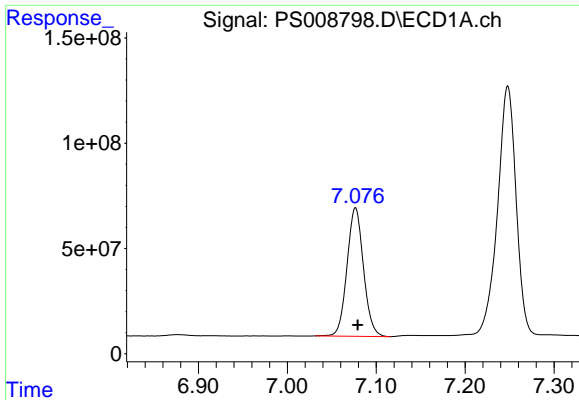
#2 3,5-DICHLOROBENZOIC ACID

R.T.: 6.455 min
 Delta R.T.: -0.003 min
 Response: 2113896639
 Conc: 748.49 ng/ml



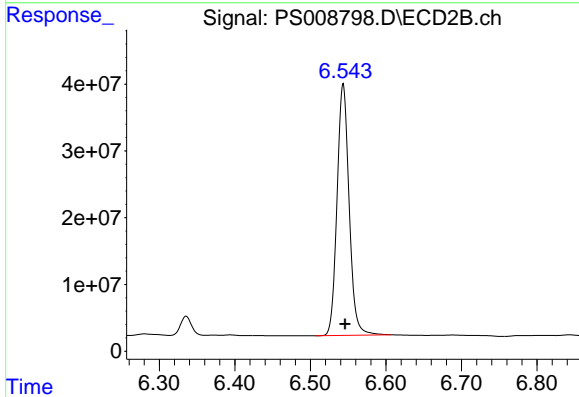
#2 3,5-DICHLOROBENZOIC ACID

R.T.: 6.086 min
 Delta R.T.: -0.002 min
 Response: 1058045843
 Conc: 768.99 ng/ml

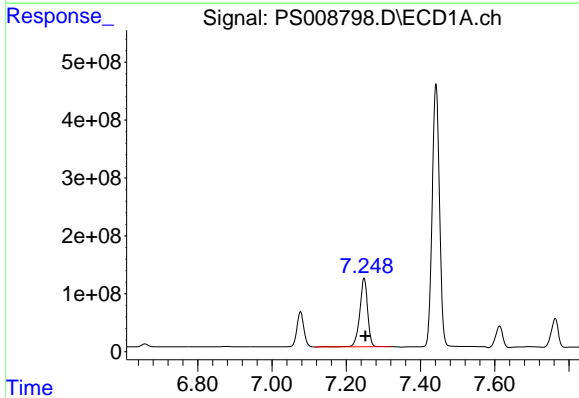


#3 4-Nitrophenol
 R.T.: 7.077 min
 Delta R.T.: -0.003 min
 Response: 785673789
 Conc: 724.32 ng/ml

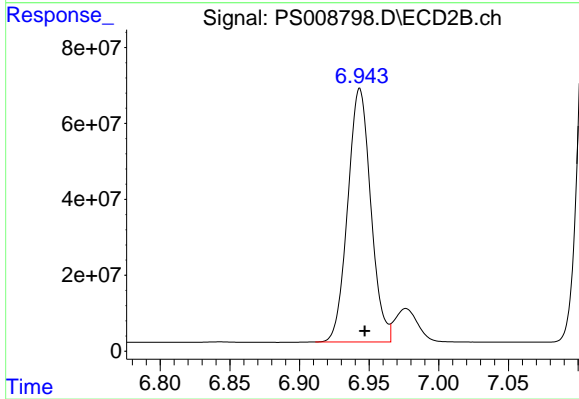
Instrument :
 ECD_S
 ClientSampleId :



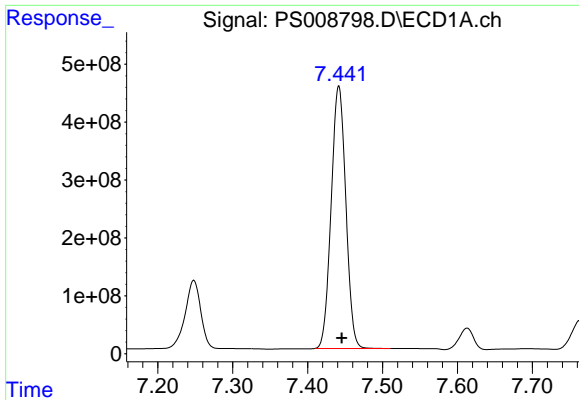
#3 4-Nitrophenol
 R.T.: 6.543 min
 Delta R.T.: -0.003 min
 Response: 418202874
 Conc: 735.52 ng/ml



#4 2,4-DCAA
 R.T.: 7.248 min
 Delta R.T.: -0.004 min
 Response: 1749271306
 Conc: 815.01 ng/ml



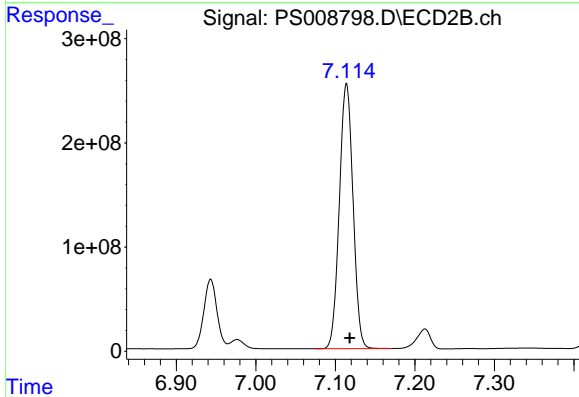
#4 2,4-DCAA
 R.T.: 6.943 min
 Delta R.T.: -0.004 min
 Response: 769701054
 Conc: 830.47 ng/ml



#5 DICAMBA

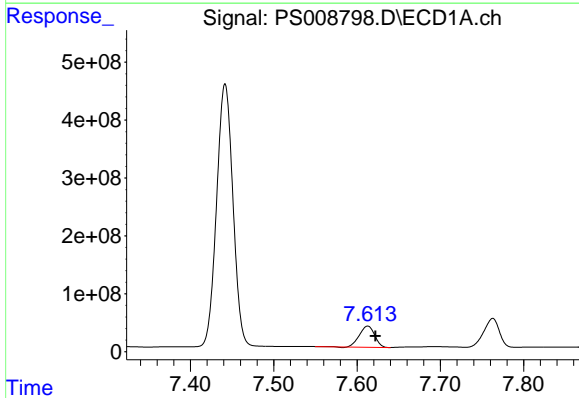
R.T.: 7.442 min
 Delta R.T.: -0.004 min
 Response: 6154208567
 Conc: 762.99 ng/ml

Instrument :
 ECD_S
 ClientSampleId :



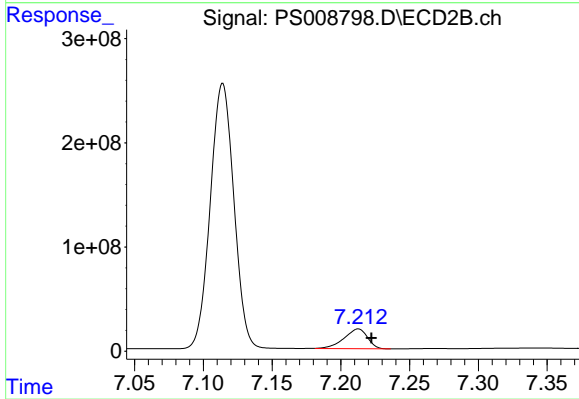
#5 DICAMBA

R.T.: 7.114 min
 Delta R.T.: -0.004 min
 Response: 3041735247
 Conc: 781.67 ng/ml



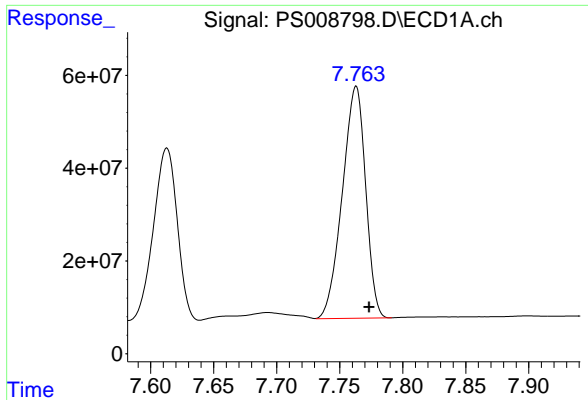
#6 MCP

R.T.: 7.613 min
 Delta R.T.: -0.009 min
 Response: 466428157
 Conc: 75.88 ug/ml



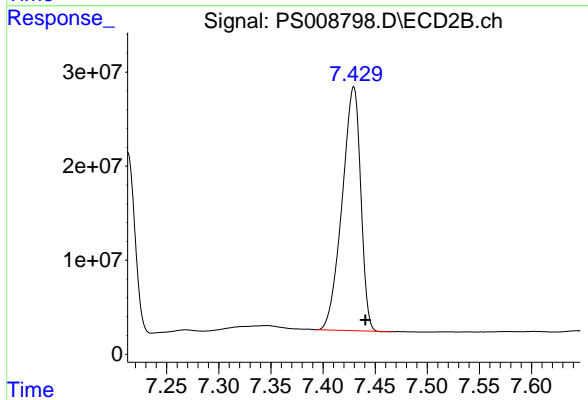
#6 MCP

R.T.: 7.212 min
 Delta R.T.: -0.010 min
 Response: 225293782
 Conc: 76.77 ug/ml

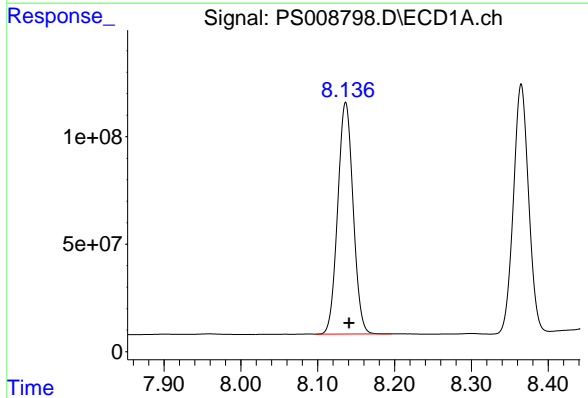


#7 MCPA
R.T.: 7.763 min
Delta R.T.: -0.011 min
Response: 643704335
Conc: 74.93 ug/ml

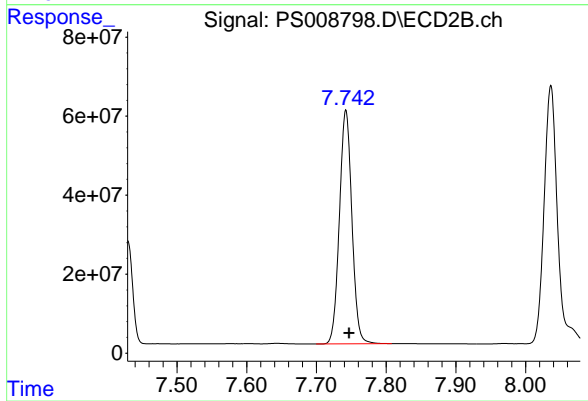
Instrument :
ECD_S
ClientSampled :



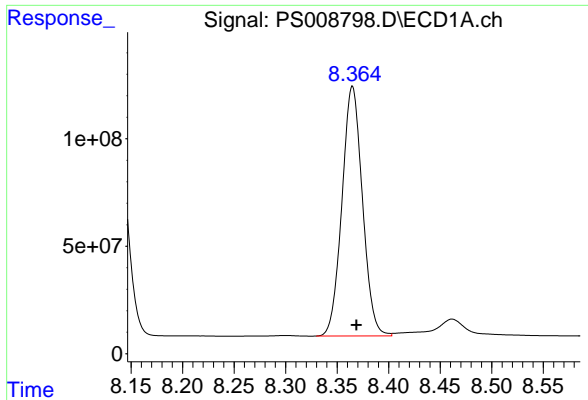
#7 MCPA
R.T.: 7.429 min
Delta R.T.: -0.012 min
Response: 321401364
Conc: 77.01 ug/ml



#8 DICHLORPROP
R.T.: 8.136 min
Delta R.T.: -0.004 min
Response: 1491048280
Conc: 753.63 ng/ml

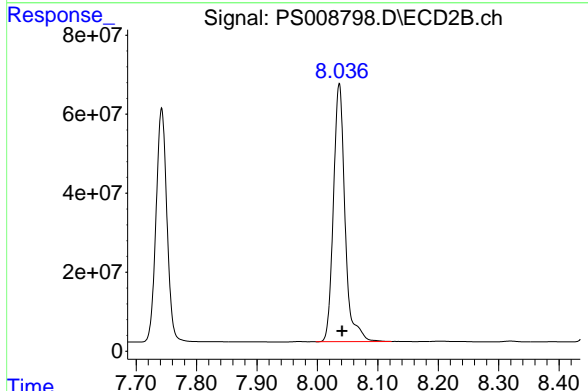


#8 DICHLORPROP
R.T.: 7.742 min
Delta R.T.: -0.005 min
Response: 735806464
Conc: 772.34 ng/ml

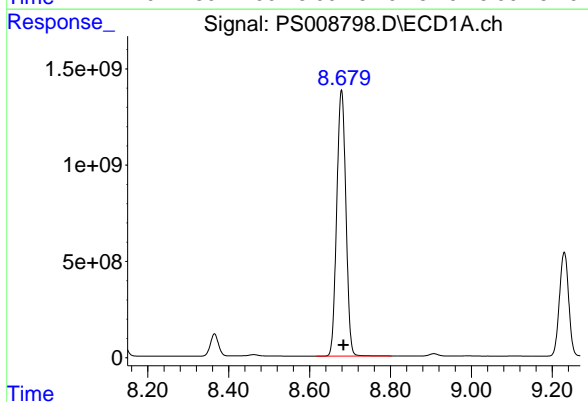


#9 2,4-D
 R.T.: 8.365 min
 Delta R.T.: -0.004 min
 Response: 1606224778
 Conc: 750.55 ng/ml

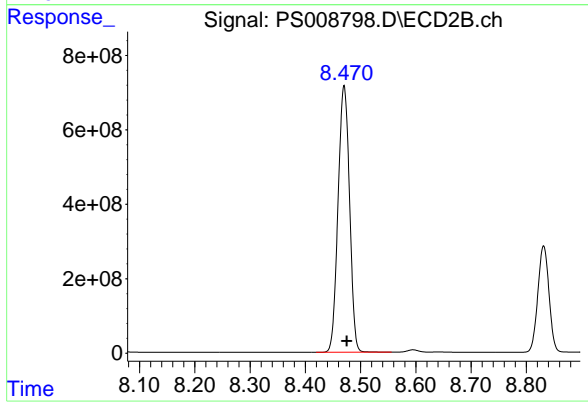
Instrument :
 ECD_S
 ClientSampled :



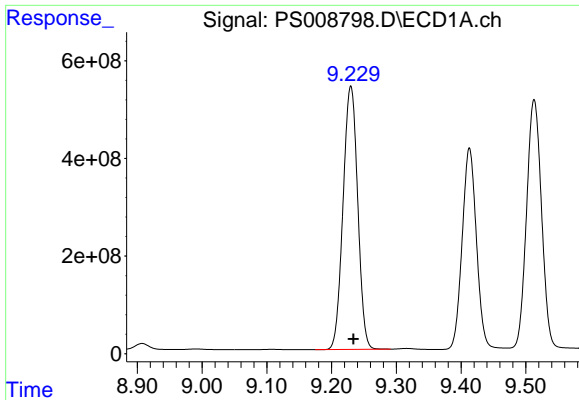
#9 2,4-D
 R.T.: 8.036 min
 Delta R.T.: -0.005 min
 Response: 871871094
 Conc: 763.82 ng/ml



#10 Pentachlorophenol
 R.T.: 8.679 min
 Delta R.T.: -0.004 min
 Response: 21692905453
 Conc: 763.06 ng/ml

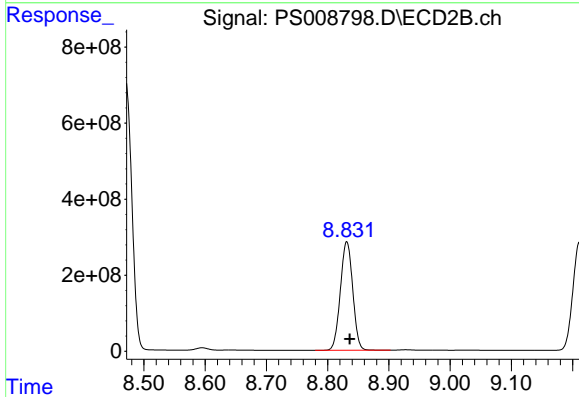


#10 Pentachlorophenol
 R.T.: 8.470 min
 Delta R.T.: -0.005 min
 Response: 10326570580
 Conc: 782.96 ng/ml

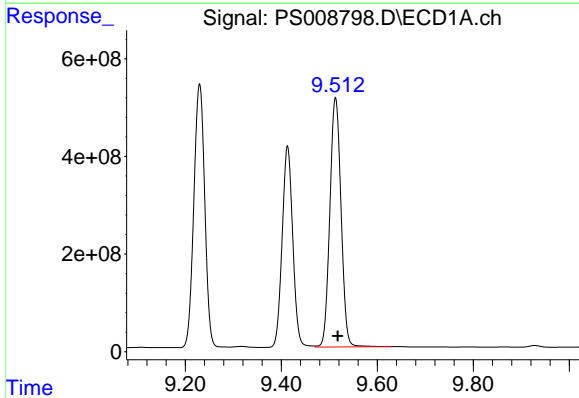


#11 2,4,5-TP (SILVEX)
 R.T.: 9.230 min
 Delta R.T.: -0.004 min
 Response: 8459967867
 Conc: 756.84 ng/ml

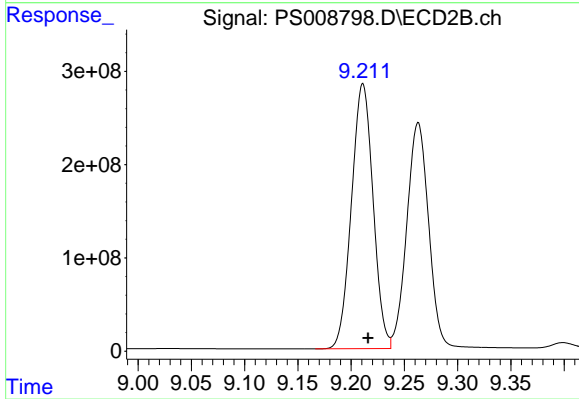
Instrument :
 ECD_S
 ClientSampled :



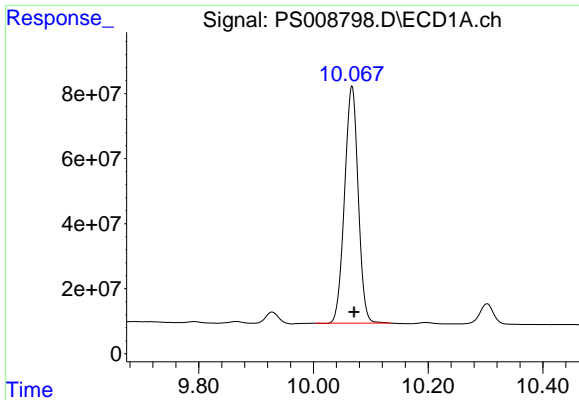
#11 2,4,5-TP (SILVEX)
 R.T.: 8.831 min
 Delta R.T.: -0.005 min
 Response: 3997615781
 Conc: 779.99 ng/ml



#12 2,4,5-T
 R.T.: 9.513 min
 Delta R.T.: -0.005 min
 Response: 8243493086
 Conc: 748.99 ng/ml



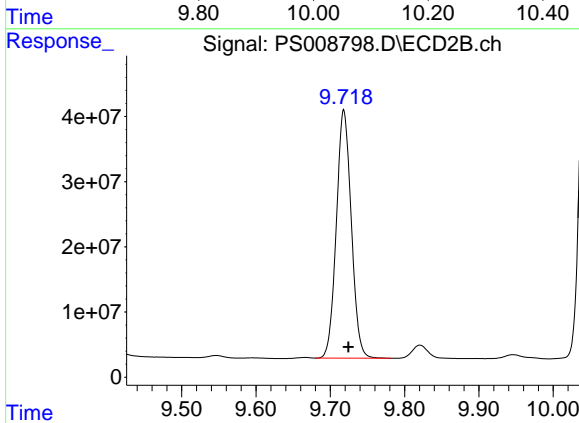
#12 2,4,5-T
 R.T.: 9.211 min
 Delta R.T.: -0.005 min
 Response: 4009760400
 Conc: 775.95 ng/ml



#13 2,4-DB

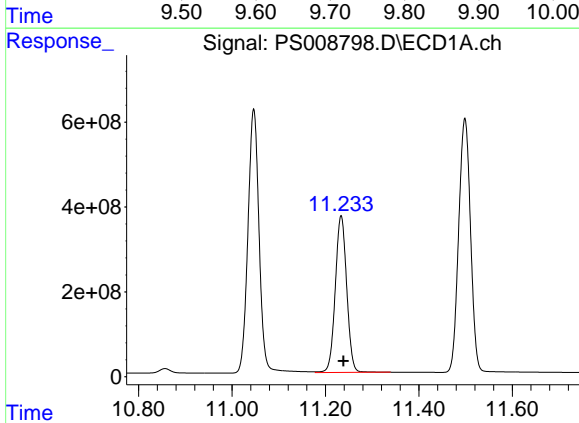
R.T.: 10.067 min
Delta R.T.: -0.004 min
Response: 1198837966
Conc: 737.03 ng/ml

Instrument :
ECD_S
ClientSampled :



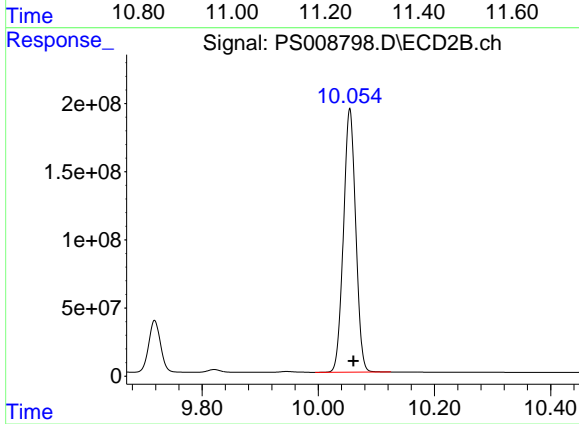
#13 2,4-DB

R.T.: 9.718 min
Delta R.T.: -0.006 min
Response: 531350753
Conc: 759.87 ng/ml



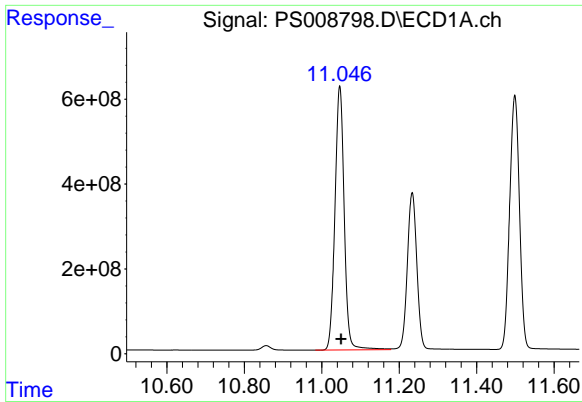
#14 DINOSEB

R.T.: 11.234 min
Delta R.T.: -0.005 min
Response: 6256429416
Conc: 741.41 ng/ml



#14 DINOSEB

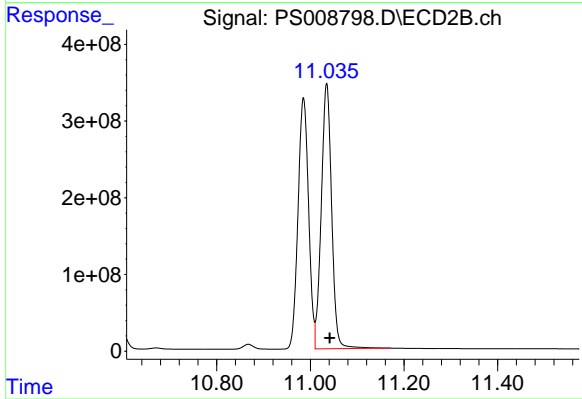
R.T.: 10.054 min
Delta R.T.: -0.006 min
Response: 2835013553
Conc: 771.84 ng/ml



#15 Picloram

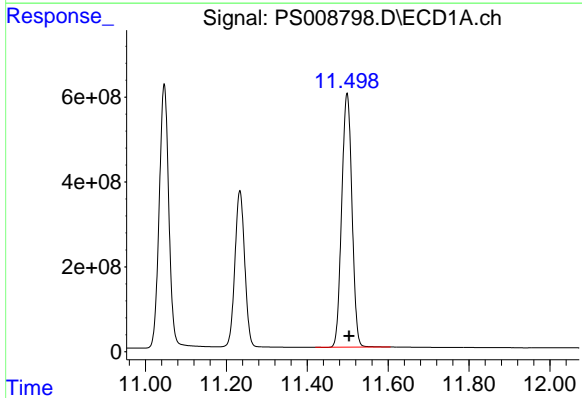
R.T.: 11.046 min
Delta R.T.: -0.003 min
Response: 10351709143
Conc: 683.56 ng/ml

Instrument :
ECD_S
ClientSampled :



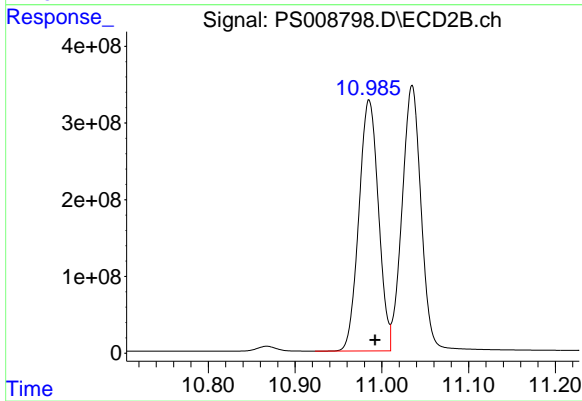
#15 Picloram

R.T.: 11.035 min
Delta R.T.: -0.006 min
Response: 5298981410
Conc: 702.03 ng/ml



#16 DCPA

R.T.: 11.499 min
Delta R.T.: -0.005 min
Response: 10513183784
Conc: 749.93 ng/ml



#16 DCPA

R.T.: 10.985 min
Delta R.T.: -0.007 min
Response: 5110146562
Conc: 785.67 ng/ml