

Data Path : Z:\pestpcbsrv\HPCHEM1\ECD_S\Data\PS021219\
 Data File : PS003137.D
 Signal(s) : Signal #1: ECD1A.ch Signal #2: ECD2B.ch
 Acq On : 12 Feb 2019 13:17
 Operator : EI\SJ
 Sample : K1453-08
 Misc :
 ALS Vial : 9 Sample Multiplier: 1

Instrument :
 ECD_S
 ClientSampleId :
 M-8-D

Integration File signal 1: autoint1.e
 Integration File signal 2: autoint2.e
 Quant Time: Feb 13 01:17:28 2019
 Quant Method : Z:\pestpcbsrv\HPCHEM1\ECD_S\Method\PS012819.M
 Quant Title : 8080.M
 QLast Update : Tue Jan 29 06:11:45 2019
 Response via : Initial Calibration
 Integrator: ChemStation

Volume Inj. : 2 µl
 Signal #1 Phase : Rtx-CLPesticides Signal #2 Phase: Rtx-CLPesticides2
 Signal #1 Info : 30M x 0.32mm x0.5 Signal #2 Info : 30M x 0.32mm x 0.25µm

| Compound | RT#1 | RT#2 | Resp#1 | Resp#2 | ng/ml | ng/ml |
|-----------------------------|--------|--------|------------|----------|---------|-----------|
| ----- | | | | | | |
| System Monitoring Compounds | | | | | | |
| 4) S 2,4-DCAA | 11.299 | 10.801 | 144.8E6 | 142.4E6 | 381.487 | 332.961 |
| Target Compounds | | | | | | |
| 1) T Dalapon | 0.000 | 2.309 | 0 70534410 | | N.D. | 131.613 # |
| 2) T 3,5-DICHL... | 0.000 | 8.967 | 0 5194029 | | N.D. | 9.216 # |
| 6) T MCPP | 11.963 | 0.000 | 42307861 | 0 | 35.312 | N.D. # |
| 14) T DINOSEB | 0.000 | 15.504 | 0 4665058 | | N.D. | 2.661 # |
| 15) T Picloram | 16.777 | 16.730 | 4859136 | 14891174 | 1.536 | 4.953 # |
| 16) T DCPA | 0.000 | 16.730 | 0 14891174 | | N.D. | 4.807 # |
| ----- | | | | | | |

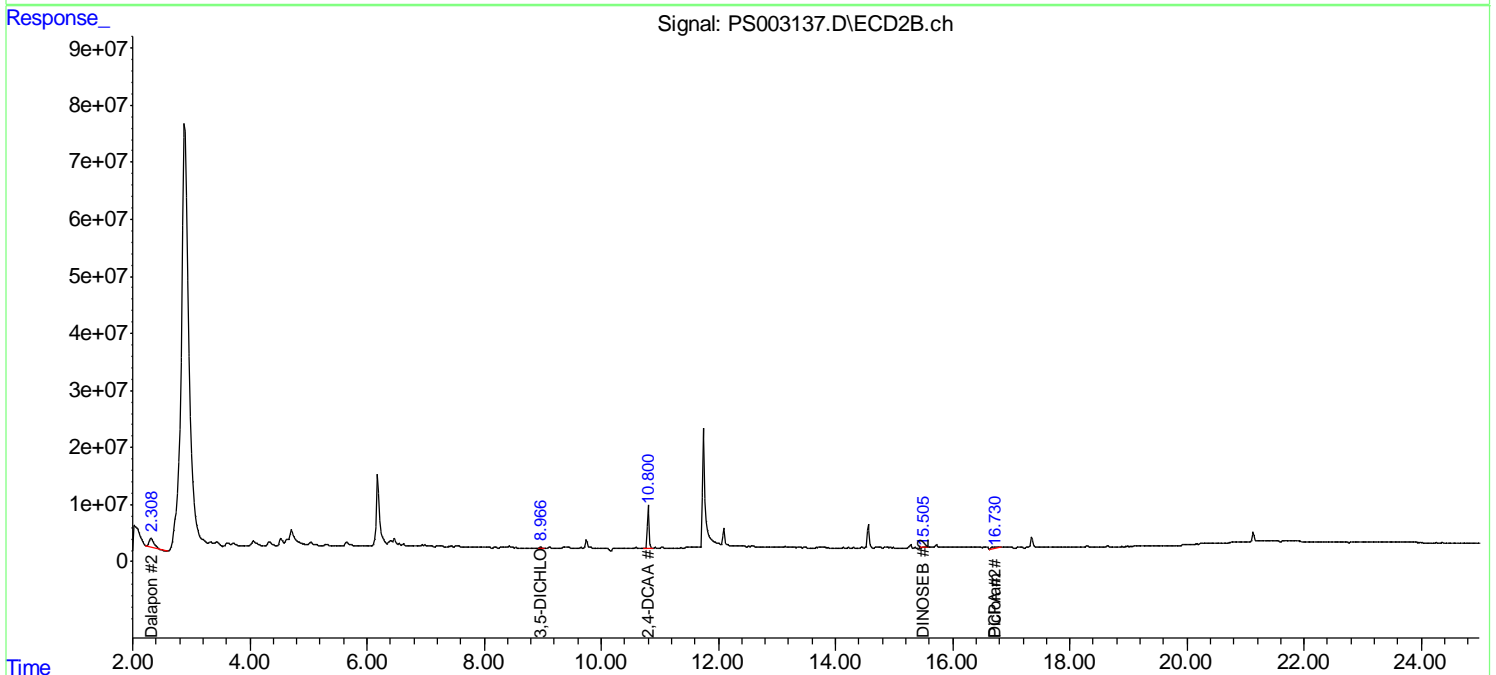
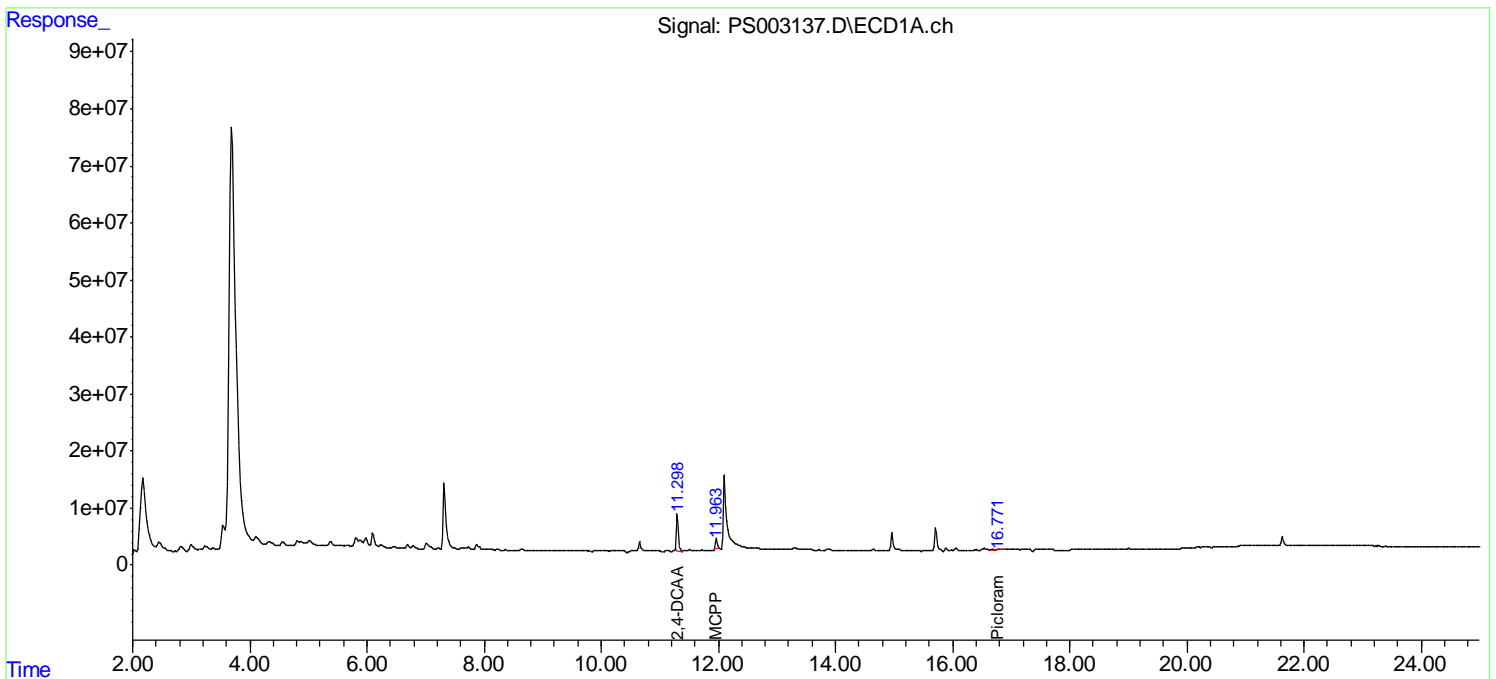
(f)=RT Delta > 1/2 Window (#)=Amounts differ by > 25% (m)=manual int.

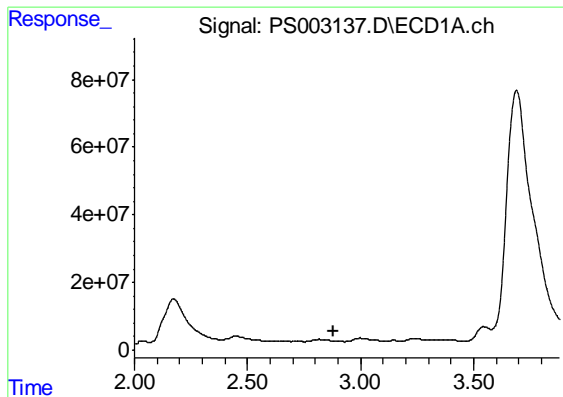
Data Path : Z:\pestpcbsrv\HPCHEM1\ECD_S\Data\PS021219\
 Data File : PS003137.D
 Signal(s) : Signal #1: ECD1A.ch Signal #2: ECD2B.ch
 Acq On : 12 Feb 2019 13:17
 Operator : EI\SJ
 Sample : K1453-08
 Misc :
 ALS Vial : 9 Sample Multiplier: 1

Instrument :
 ECD_S
 ClientSampled :
 M-8-D

Integration File signal 1: autoint1.e
 Integration File signal 2: autoint2.e
 Quant Time: Feb 13 01:17:28 2019
 Quant Method : Z:\pestpcbsrv\HPCHEM1\ECD_S\Method\PS012819.M
 Quant Title : 8080.M
 QLast Update : Tue Jan 29 06:11:45 2019
 Response via : Initial Calibration
 Integrator: ChemStation

Volume Inj. : 2 µl
 Signal #1 Phase : Rtx-CLPesticides Signal #2 Phase: Rtx-CLPesticides2
 Signal #1 Info : 30M x 0.32mm x0.5 Signal #2 Info : 30M x 0.32mm x 0.25µm

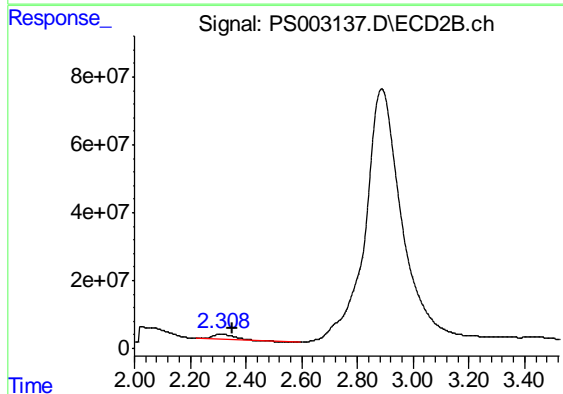




#1 Dalapon

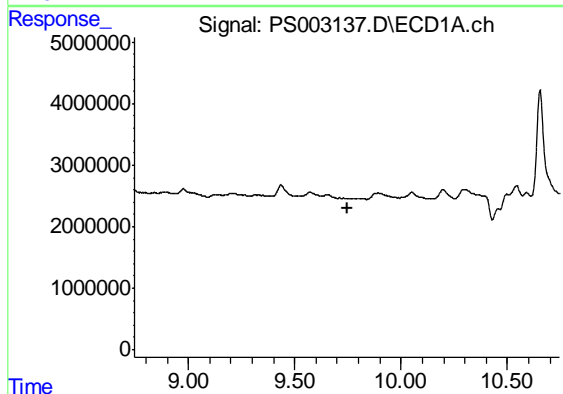
R.T.: 0.000 min
 Exp R.T. : 2.880 min
 Response: 0
 Conc: N.D.

Instrument :
 ECD_S
 ClientSampled :
 M-8-D



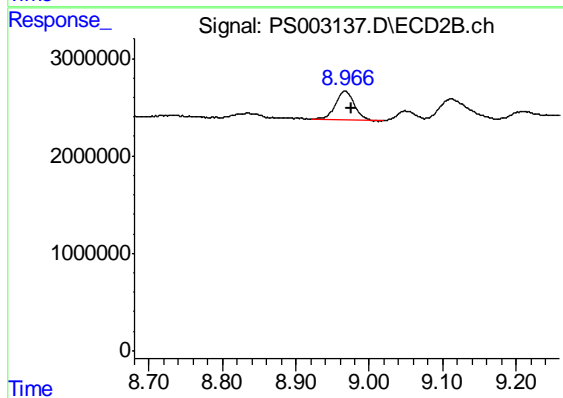
#1 Dalapon

R.T.: 2.309 min
 Delta R.T.: -0.042 min
 Response: 70534410
 Conc: 131.61 ng/ml



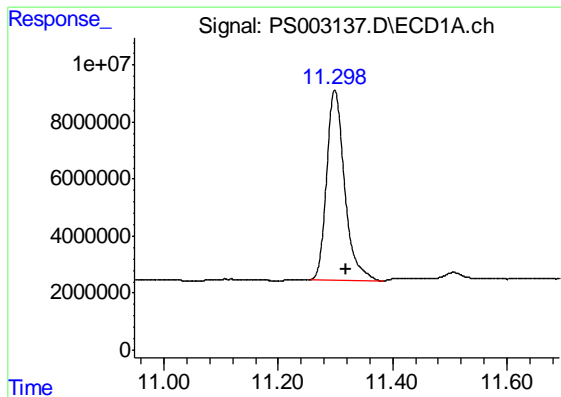
#2 3,5-DICHLOROBENZOIC ACID

R.T.: 0.000 min
 Exp R.T. : 9.745 min
 Response: 0
 Conc: N.D.



#2 3,5-DICHLOROBENZOIC ACID

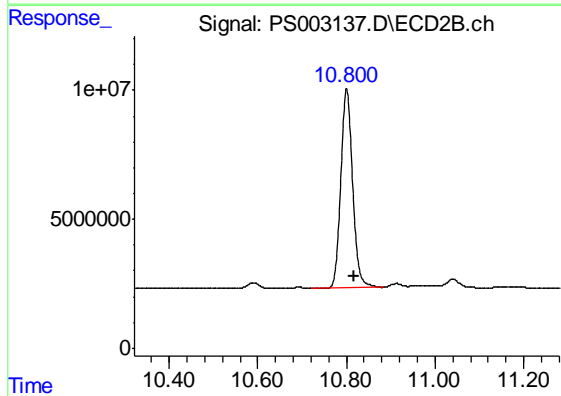
R.T.: 8.967 min
 Delta R.T.: -0.009 min
 Response: 5194029
 Conc: 9.22 ng/ml



#4 2,4-DCAA

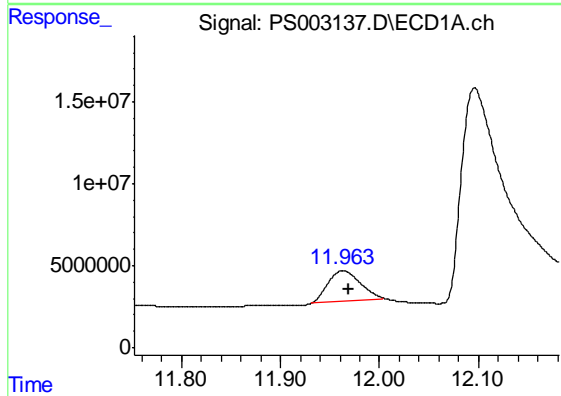
R.T.: 11.299 min
 Delta R.T.: -0.019 min
 Response: 144828188
 Conc: 381.49 ng/ml

Instrument :
 ECD_S
 ClientSampled :
 M-8-D



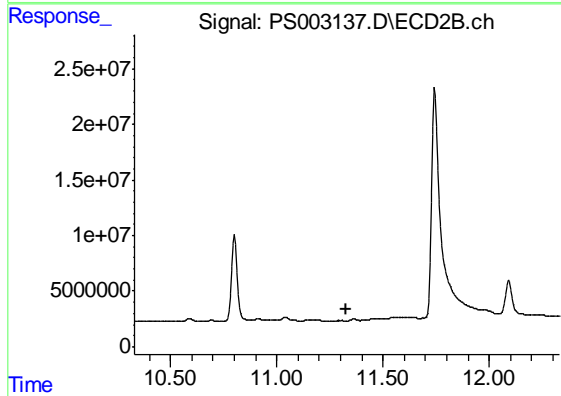
#4 2,4-DCAA

R.T.: 10.801 min
 Delta R.T.: -0.016 min
 Response: 142355904
 Conc: 332.96 ng/ml



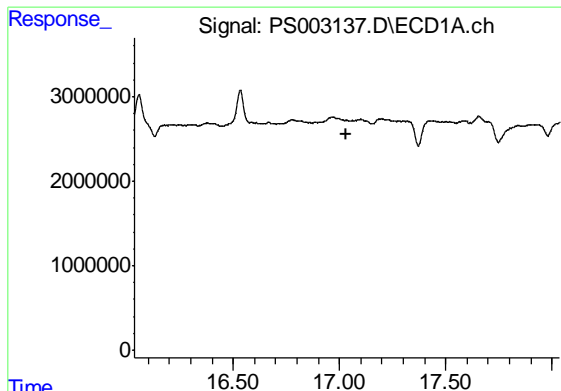
#6 MCPP

R.T.: 11.963 min
 Delta R.T.: -0.006 min
 Response: 42307861
 Conc: 35.31 ug/ml



#6 MCPP

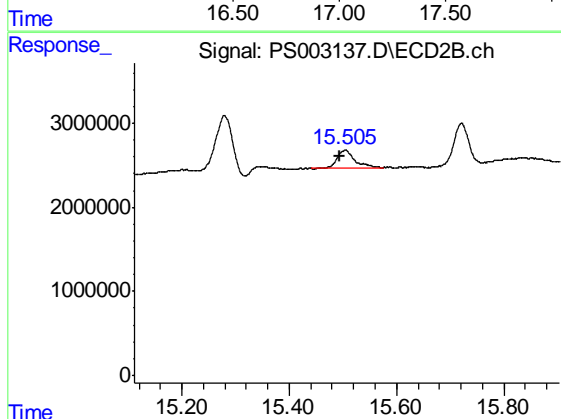
R.T.: 0.000 min
 Exp R.T. : 11.330 min
 Response: 0
 Conc: N.D.



#14 DINOSEB

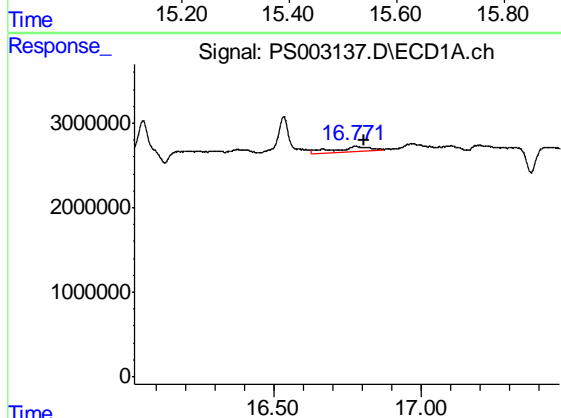
R.T.: 0.000 min
 Exp R.T. : 17.035 min
 Response: 0
 Conc: N.D.

Instrument :
 ECD_S
 ClientSampled :
 M-8-D



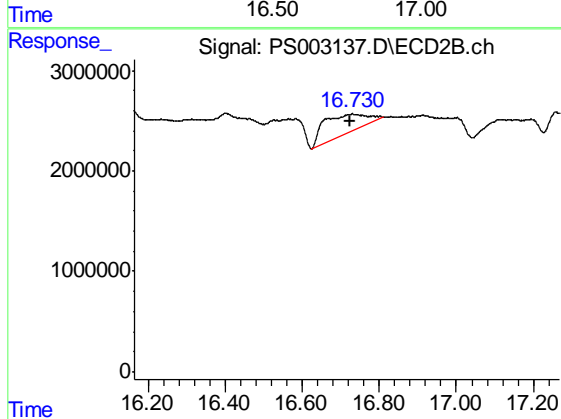
#14 DINOSEB

R.T.: 15.504 min
 Delta R.T.: 0.009 min
 Response: 4665058
 Conc: 2.66 ng/ml



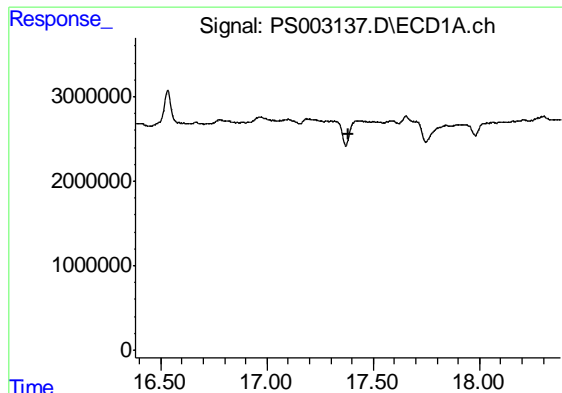
#15 Picloram

R.T.: 16.777 min
 Delta R.T.: -0.028 min
 Response: 4859136
 Conc: 1.54 ng/ml



#15 Picloram

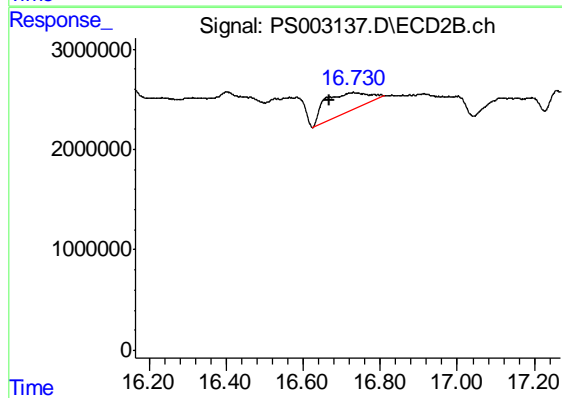
R.T.: 16.730 min
 Delta R.T.: 0.006 min
 Response: 14891174
 Conc: 4.95 ng/ml



#16 DCPA

R.T.: 0.000 min
Exp R.T.: 17.382 min
Response: 0
Conc: N.D.

Instrument :
ECD_S
ClientSampleId :
M-8-D



#16 DCPA

R.T.: 16.730 min
Delta R.T.: 0.060 min
Response: 14891174
Conc: 4.81 ng/ml