

Data Path : Z:\pestpcbsrv\HPCHEM1\ECD\_S\Data\PS021221\  
 Data File : PS014007.D  
 Signal(s) : Signal #1: ECD1A.ch Signal #2: ECD2B.ch  
 Acq On : 12 Feb 2021 13:56  
 Operator : DD\AJ  
 Sample : PB134597BL  
 Misc :  
 ALS Vial : 4 Sample Multiplier: 1

Instrument :  
 ECD\_S  
 ClientSampleId :

Integration File signal 1: autoint1.e  
 Integration File signal 2: autoint2.e  
 Quant Time: Feb 12 17:37:28 2021  
 Quant Method : Z:\pestpcbsrv\HPCHEM1\ECD\_S\Method\PS012721.M  
 Quant Title : 8080.M  
 QLast Update : Thu Jan 28 01:00:30 2021  
 Response via : Initial Calibration  
 Integrator: ChemStation

Volume Inj. : 2 µl  
 Signal #1 Phase : Rtx-CLPesticides Signal #2 Phase: Rtx-CLPesticides2  
 Signal #1 Info : 30M x 0.32mm x0.5 Signal #2 Info : 30M x 0.32mm x 0.25µm

	Compound	RT#1	RT#2	Resp#1	Resp#2	ng/ml	ng/ml
-----							
System Monitoring Compounds							
4) S	2,4-DCAA	7.207	6.900	485.8E6	211.9E6	451.519	549.426
Target Compounds							
1) T	Dalapon	2.994	2.577f	-6648144	34763154	N.D.	67.611
2) T	3,5-DICHL...	0.000	6.084	0	41827402	N.D.	68.892
3) T	4-Nitroph...	6.980f	0.000	10268444	0	18.897	N.D. #
5) T	DICAMBA	7.383	7.033	8197415	11991551	1.906	7.277 #
6) T	MCP P	7.557	0.000	7281534	0	2.307	N.D. #
7) T	MCPA	7.661f	7.358	14911290	25129625	3.295	12.963 #
8) T	DICHLORPROP	0.000	7.731	0	5732643	N.D.	13.473
9) T	2,4-D	8.274f	7.957	10154559	681685	8.270	1.279 #
10) T	Pentachlo...	8.680f	0.000	33045573	0	2.087	N.D. #
11) T	2,4,5-TP ...	9.239f	8.744	5980472	90945339	<MDL	39.619 #
12) T	2,4,5-T	9.475	0.000	16954942	0	2.632	N.D. #
13) T	2,4-DB	9.976	9.601f	7108914	6032526	6.440	20.174 #
14) T	DINOSEB	11.139	10.000	141.1E6	23715675	27.834	14.516 #
15) T	Picloram	11.023	11.009	296.0E6	156.3E6	34.857	45.800 #
16) T	DCPA	11.439	10.914	-503209	5041660	N.D.	1.683

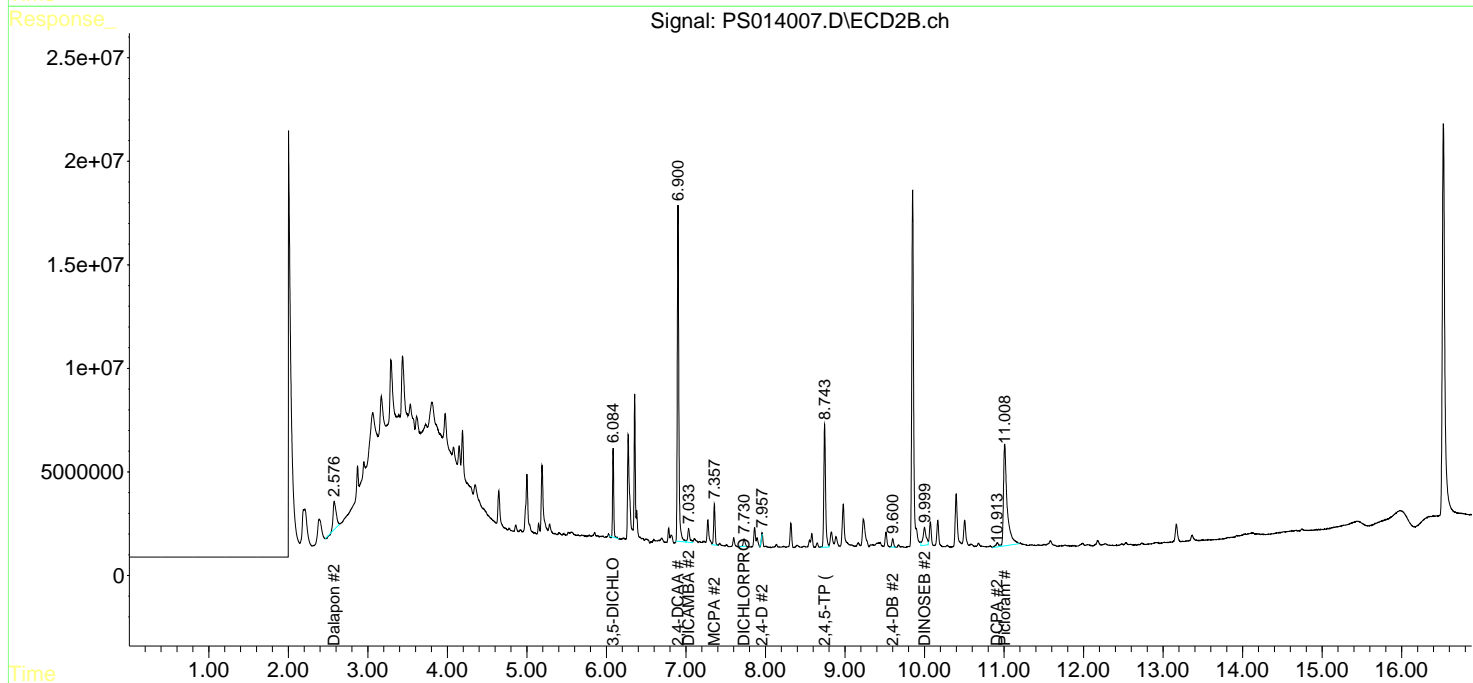
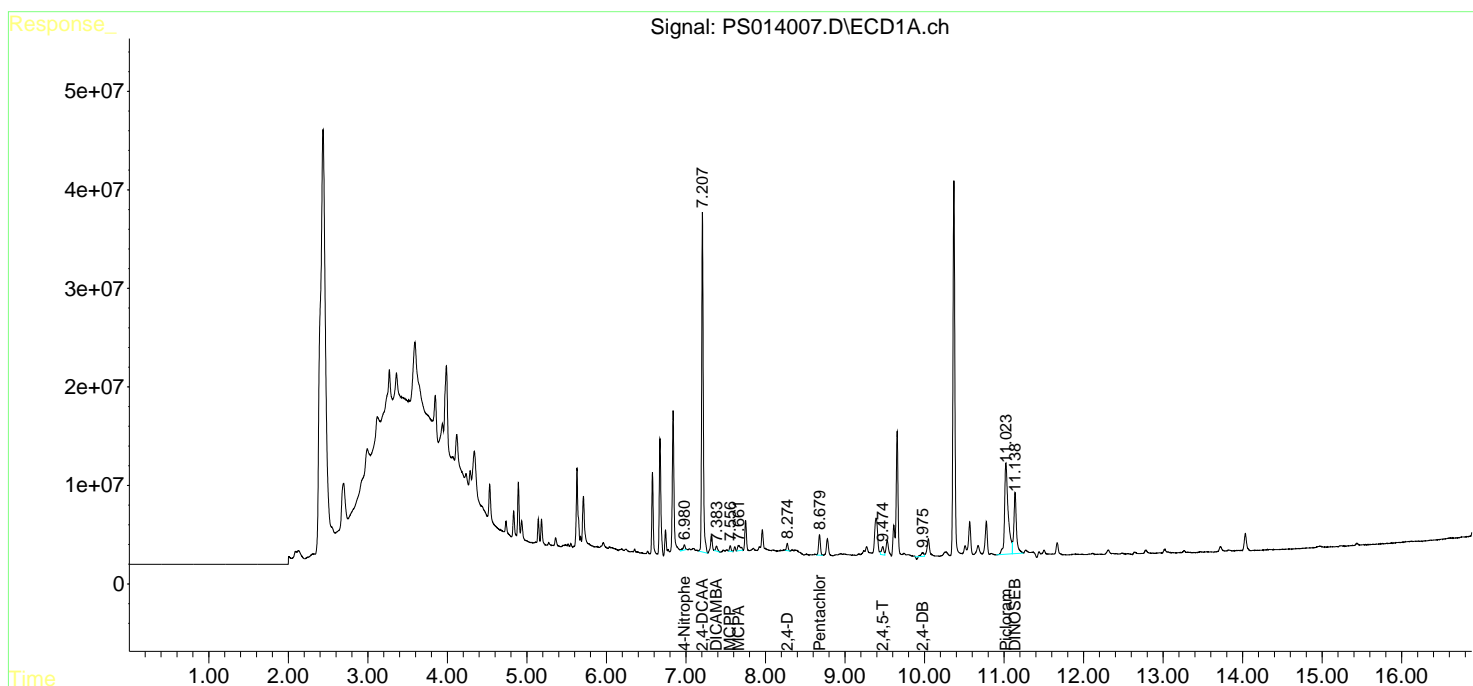
(f)=RT Delta > 1/2 Window (#)=Amounts differ by > 25% (m)=manual int.

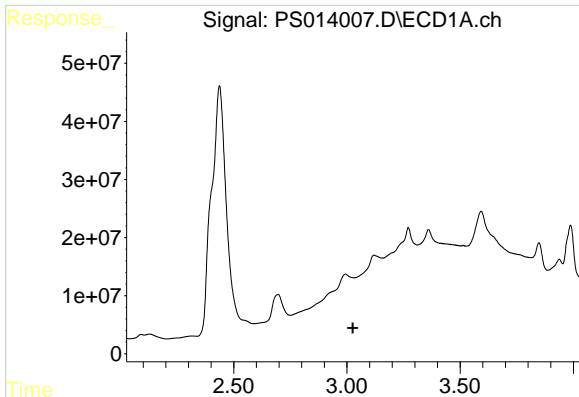
Data Path : Z:\pestpcbsrv\HPCHEM1\ECD\_S\Data\PS021221\  
 Data File : PS014007.D  
 Signal(s) : Signal #1: ECD1A.ch Signal #2: ECD2B.ch  
 Acq On : 12 Feb 2021 13:56  
 Operator : DD\AJ  
 Sample : PB134597BL  
 Misc :  
 ALS Vial : 4 Sample Multiplier: 1

Instrument :  
 ECD\_S  
 ClientSampled :

Integration File signal 1: autoint1.e  
 Integration File signal 2: autoint2.e  
 Quant Time: Feb 12 17:37:28 2021  
 Quant Method : Z:\pestpcbsrv\HPCHEM1\ECD\_S\Method\PS012721.M  
 Quant Title : 8080.M  
 QLast Update : Thu Jan 28 01:00:30 2021  
 Response via : Initial Calibration  
 Integrator: ChemStation

Volume Inj. : 2 µl  
 Signal #1 Phase : Rtx-CLPesticides Signal #2 Phase: Rtx-CLPesticides2  
 Signal #1 Info : 30M x 0.32mm x0.5 Signal #2 Info : 30M x 0.32mm x 0.25µm

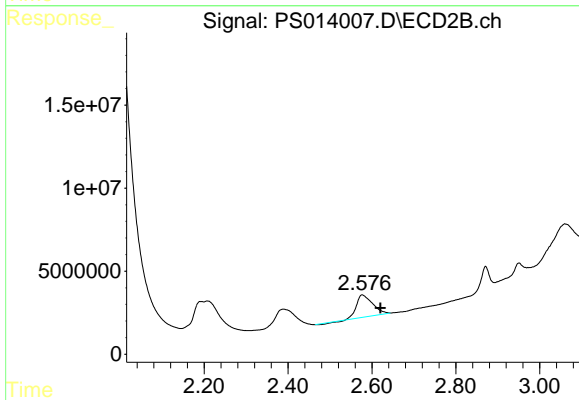




#1 Dalapon

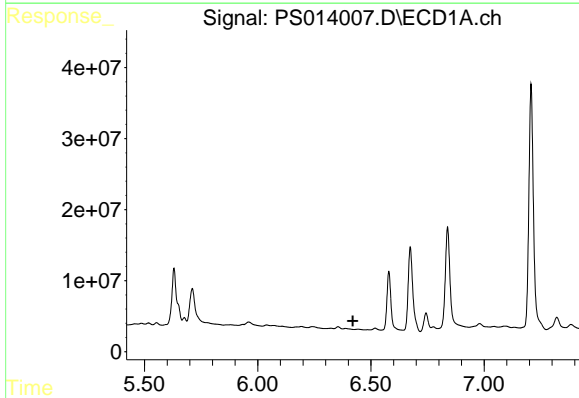
R.T.: 2.994 min  
 Delta R.T.: -0.032 min  
 Response: -6648144  
 Conc: N.D.

Instrument :  
 ECD\_S  
 ClientSampled :



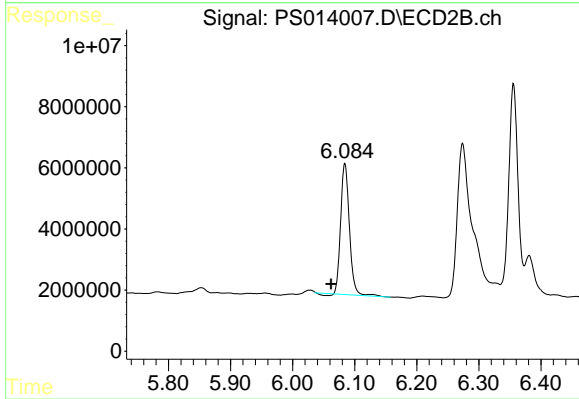
#1 Dalapon

R.T.: 2.577 min  
 Delta R.T.: -0.044 min  
 Response: 34763154  
 Conc: 67.61 ng/ml



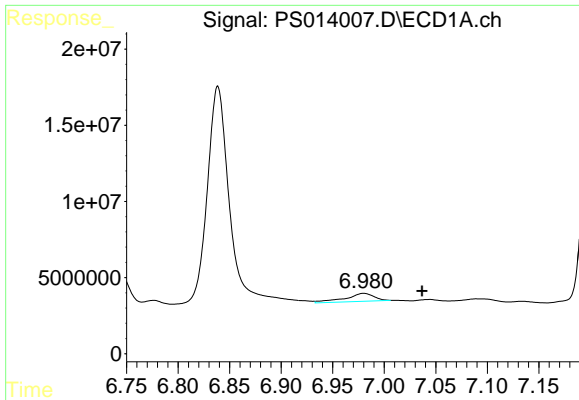
#2 3,5-DICHLOROBENZOIC ACID

R.T.: 0.000 min  
 Exp R.T. : 6.420 min  
 Response: 0  
 Conc: N.D.



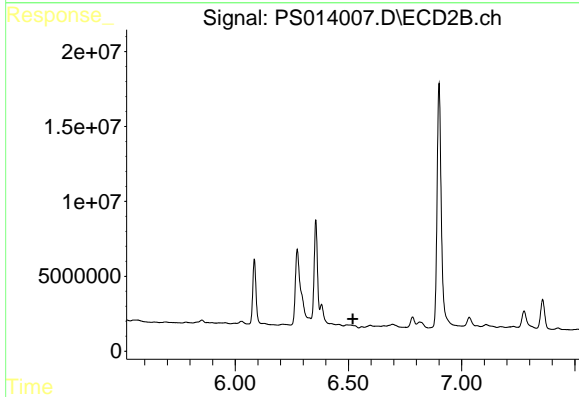
#2 3,5-DICHLOROBENZOIC ACID

R.T.: 6.084 min  
 Delta R.T.: 0.023 min  
 Response: 41827402  
 Conc: 68.89 ng/ml

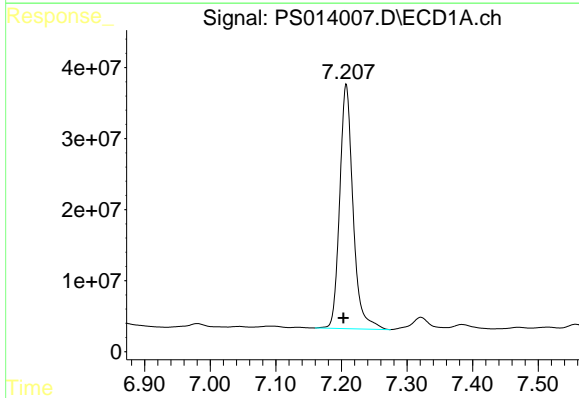


#3 4-Nitrophenol  
 R.T.: 6.980 min  
 Delta R.T.: -0.056 min  
 Response: 10268444  
 Conc: 18.90 ng/ml

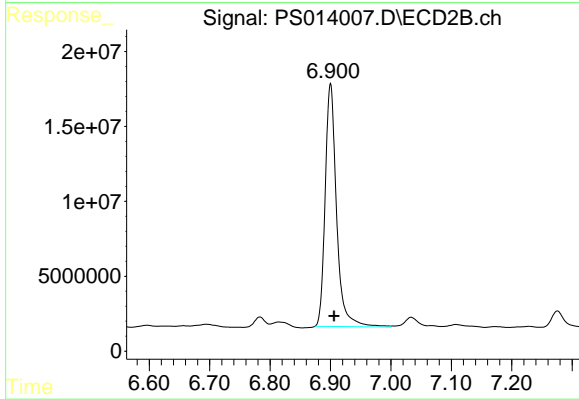
Instrument :  
 ECD\_S  
 ClientSampled :



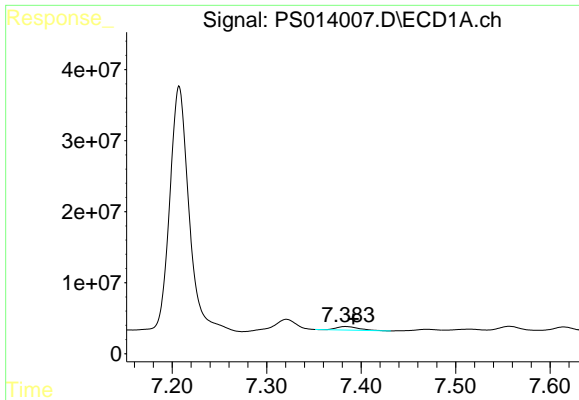
#3 4-Nitrophenol  
 R.T.: 0.000 min  
 Exp R.T. : 6.520 min  
 Response: 0  
 Conc: N.D.



#4 2,4-DCAA  
 R.T.: 7.207 min  
 Delta R.T.: 0.004 min  
 Response: 485768922  
 Conc: 451.52 ng/ml

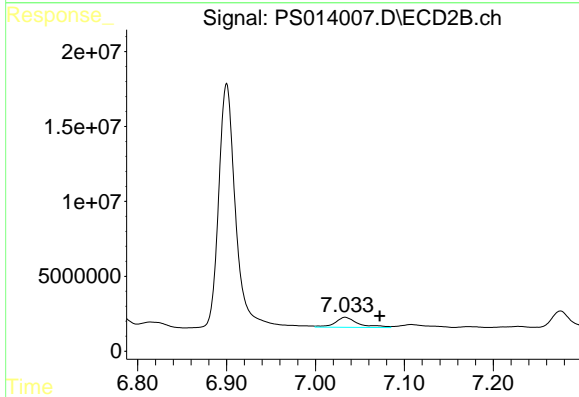


#4 2,4-DCAA  
 R.T.: 6.900 min  
 Delta R.T.: -0.006 min  
 Response: 211942702  
 Conc: 549.43 ng/ml

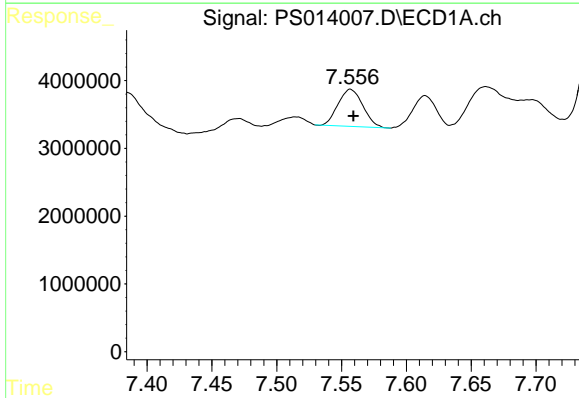


#5 DICAMBA  
 R.T.: 7.383 min  
 Delta R.T.: -0.009 min  
 Response: 8197415  
 Conc: 1.91 ng/ml

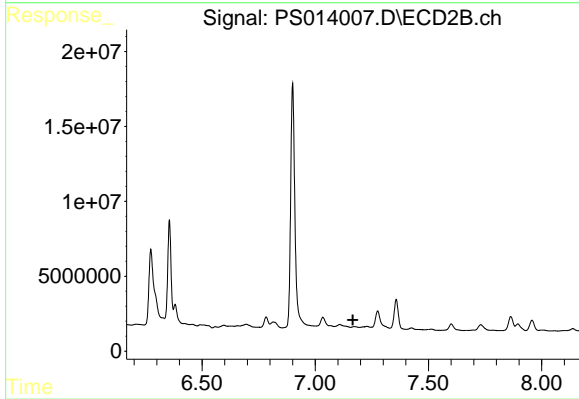
Instrument :  
 ECD\_S  
 ClientSampleId :



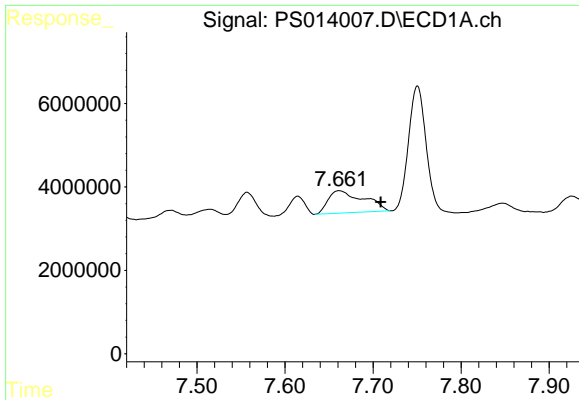
#5 DICAMBA  
 R.T.: 7.033 min  
 Delta R.T.: -0.039 min  
 Response: 11991551  
 Conc: 7.28 ng/ml



#6 MCP  
 R.T.: 7.557 min  
 Delta R.T.: -0.002 min  
 Response: 7281534  
 Conc: 2.31 ug/ml

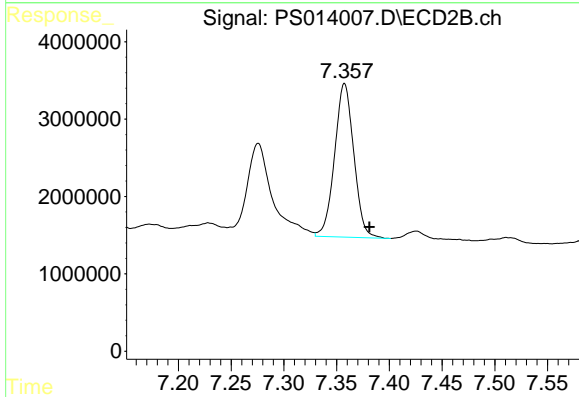


#6 MCP  
 R.T.: 0.000 min  
 Exp R.T.: 7.167 min  
 Response: 0  
 Conc: N.D.

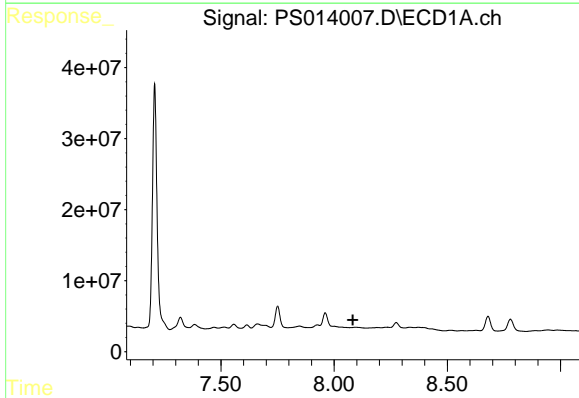


#7 MCPA  
 R.T.: 7.661 min  
 Delta R.T.: -0.047 min  
 Response: 14911290  
 Conc: 3.29 ug/ml

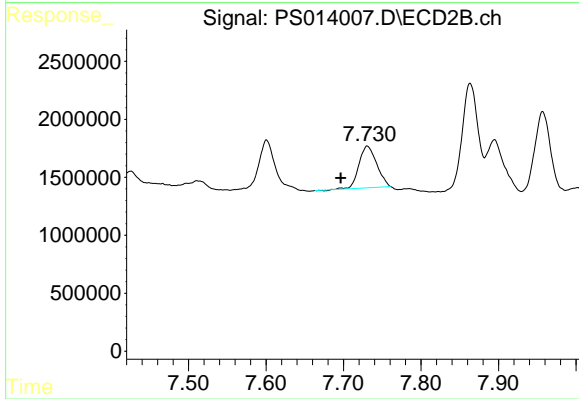
Instrument :  
 ECD\_S  
 ClientSampleId :



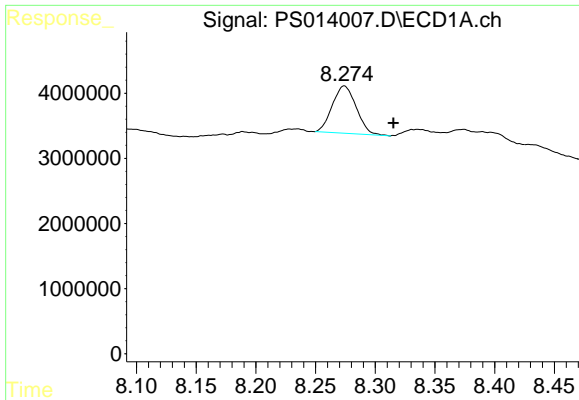
#7 MCPA  
 R.T.: 7.358 min  
 Delta R.T.: -0.024 min  
 Response: 25129625  
 Conc: 12.96 ug/ml



#8 DICHLORPROP  
 R.T.: 0.000 min  
 Exp R.T. : 8.083 min  
 Response: 0  
 Conc: N.D.

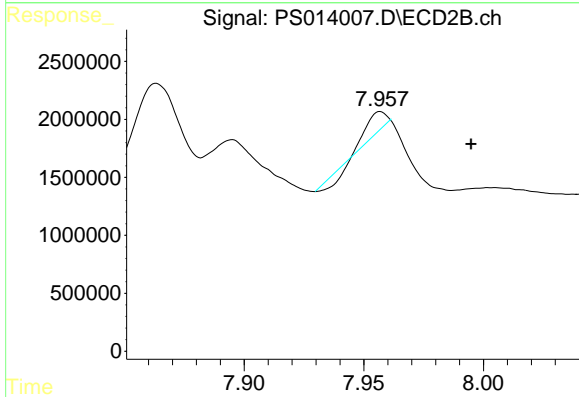


#8 DICHLORPROP  
 R.T.: 7.731 min  
 Delta R.T.: 0.034 min  
 Response: 5732643  
 Conc: 13.47 ng/ml

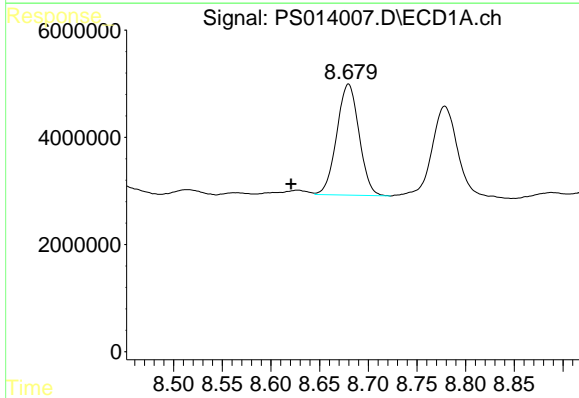


#9 2,4-D  
 R.T.: 8.274 min  
 Delta R.T.: -0.041 min  
 Response: 10154559  
 Conc: 8.27 ng/ml

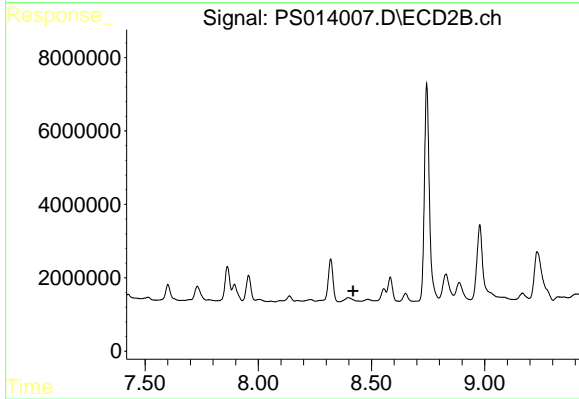
Instrument :  
 ECD\_S  
 ClientSampled :



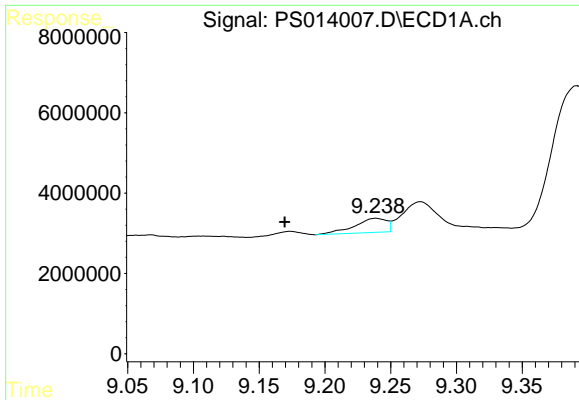
#9 2,4-D  
 R.T.: 7.957 min  
 Delta R.T.: -0.038 min  
 Response: 681685  
 Conc: 1.28 ng/ml



#10 Pentachlorophenol  
 R.T.: 8.680 min  
 Delta R.T.: 0.059 min  
 Response: 33045573  
 Conc: 2.09 ng/ml

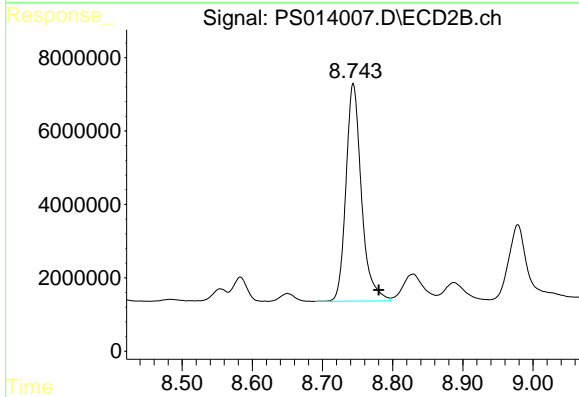


#10 Pentachlorophenol  
 R.T.: 0.000 min  
 Exp R.T. : 8.418 min  
 Response: 0  
 Conc: N.D.

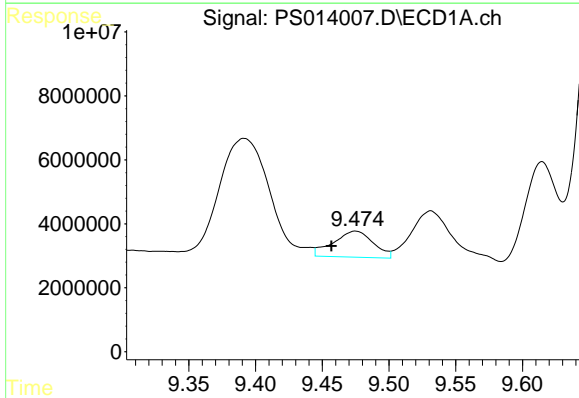


#11 2,4,5-TP (SILVEX)  
 R.T.: 9.239 min  
 Delta R.T.: 0.069 min  
 Response: 5980472  
 Conc: N.D.

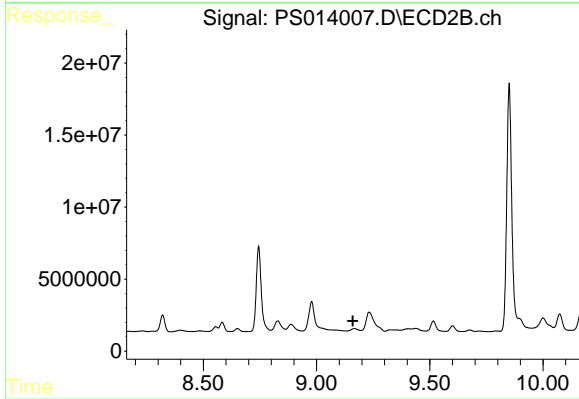
Instrument :  
 ECD\_S  
 ClientSampleId :



#11 2,4,5-TP (SILVEX)  
 R.T.: 8.744 min  
 Delta R.T.: -0.036 min  
 Response: 90945339  
 Conc: 39.62 ng/ml

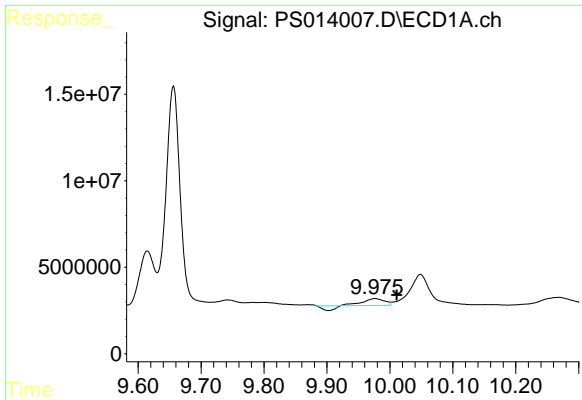


#12 2,4,5-T  
 R.T.: 9.475 min  
 Delta R.T.: 0.018 min  
 Response: 16954942  
 Conc: 2.63 ng/ml



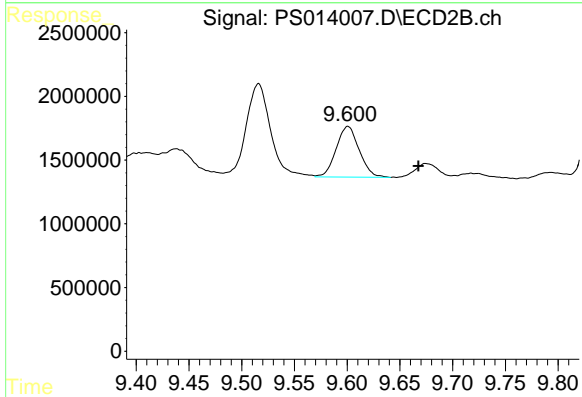
#12 2,4,5-T  
 R.T.: 0.000 min  
 Exp R.T. : 9.161 min  
 Response: 0  
 Conc: N.D.



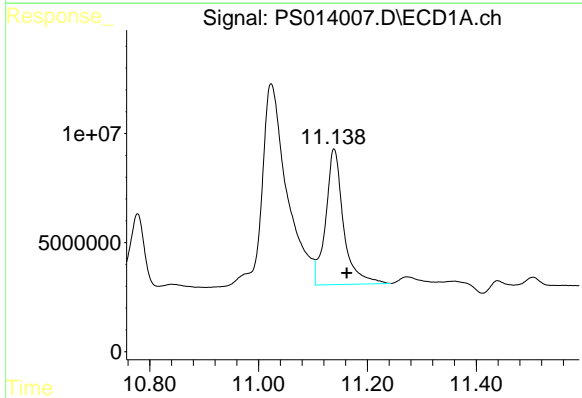


#13 2,4-DB  
 R.T.: 9.976 min  
 Delta R.T.: -0.035 min  
 Response: 7108914  
 Conc: 6.44 ng/ml

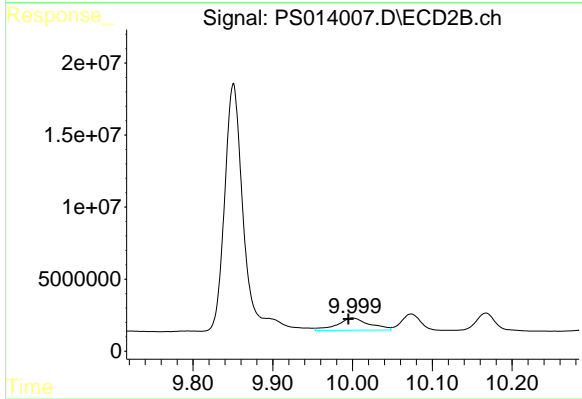
Instrument :  
 ECD\_S  
 ClientSampleId :



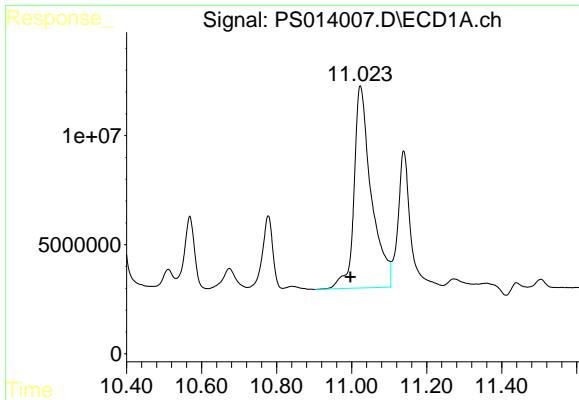
#13 2,4-DB  
 R.T.: 9.601 min  
 Delta R.T.: -0.067 min  
 Response: 6032526  
 Conc: 20.17 ng/ml



#14 DINOSEB  
 R.T.: 11.139 min  
 Delta R.T.: -0.023 min  
 Response: 141062647  
 Conc: 27.83 ng/ml

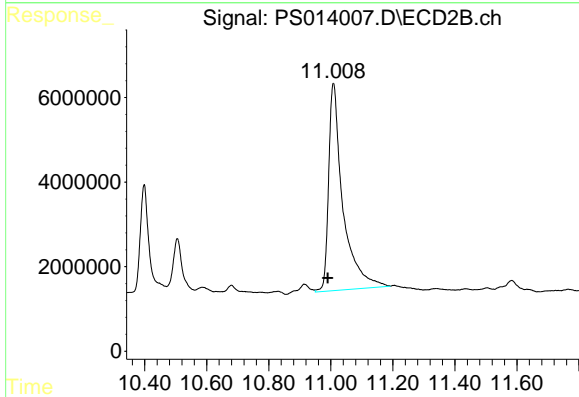


#14 DINOSEB  
 R.T.: 10.000 min  
 Delta R.T.: 0.005 min  
 Response: 23715675  
 Conc: 14.52 ng/ml

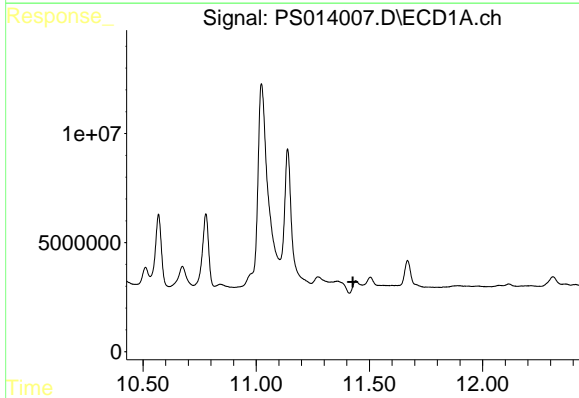


#15 Picloram  
R.T.: 11.023 min  
Delta R.T.: 0.027 min  
Response: 295972277  
Conc: 34.86 ng/ml

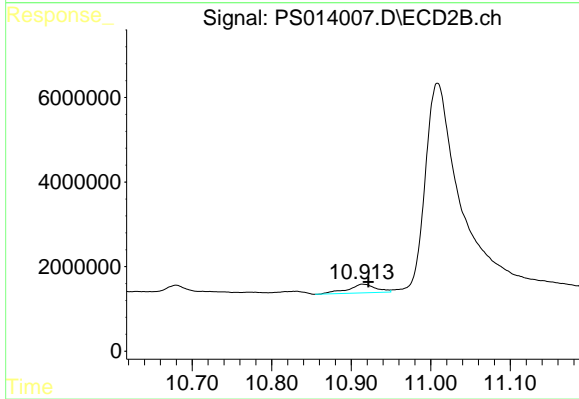
Instrument :  
ECD\_S  
ClientSampled :



#15 Picloram  
R.T.: 11.009 min  
Delta R.T.: 0.019 min  
Response: 156299246  
Conc: 45.80 ng/ml



#16 DCPA  
R.T.: 11.439 min  
Delta R.T.: 0.012 min  
Response: -503209  
Conc: N.D.



#16 DCPA  
R.T.: 10.914 min  
Delta R.T.: -0.007 min  
Response: 5041660  
Conc: 1.68 ng/ml