

Data Path : Z:\pestpcbsrv\HPCHEM1\ECD\_S\Data\PS021221\  
 Data File : PS014009.D  
 Signal(s) : Signal #1: ECD1A.ch Signal #2: ECD2B.ch  
 Acq On : 12 Feb 2021 14:42  
 Operator : DD\AJ  
 Sample : PB134597TB  
 Misc :  
 ALS Vial : 6 Sample Multiplier: 1

Instrument :  
 ECD\_S  
 ClientSampleId :

Integration File signal 1: autoint1.e  
 Integration File signal 2: autoint2.e  
 Quant Time: Feb 12 17:38:04 2021  
 Quant Method : Z:\pestpcbsrv\HPCHEM1\ECD\_S\Method\PS012721.M  
 Quant Title : 8080.M  
 QLast Update : Thu Jan 28 01:00:30 2021  
 Response via : Initial Calibration  
 Integrator: ChemStation

Volume Inj. : 2 µl  
 Signal #1 Phase : Rtx-CLPesticides Signal #2 Phase: Rtx-CLPesticides2  
 Signal #1 Info : 30M x 0.32mm x0.5 Signal #2 Info : 30M x 0.32mm x 0.25µm

Compound	RT#1	RT#2	Resp#1	Resp#2	ng/ml	ng/ml
-----						
System Monitoring Compounds						
4) S 2,4-DCAA	7.206	6.904	323.1E6	119.0E6	300.325	308.595
Target Compounds						
1) T Dalapon	2.992	2.586	61472227	69173924	49.254	134.537 #
2) T 3,5-DICHL...	0.000	6.087	0	39537213	N.D.	65.120
3) T 4-Nitroph...	7.092f	0.000	20447120	0	37.629	N.D. #
5) T DICAMBA	7.378	7.036	10944224	6086860	2.545	3.694 #
6) T MCPP	7.557	0.000	11624911	0	3.684	N.D. #
7) T MCPA	7.700	0.000	13676931	0	3.022	N.D. #
8) T DICHLORPROP	0.000	7.730	0	10681335	N.D.	25.104
10) T Pentachlo...	8.676f	0.000	23849088	0	1.506	N.D. #
11) T 2,4,5-TP ...	9.235f	8.745	7930871	70259244	1.263	30.607 #
12) T 2,4,5-T	9.395f	9.230f	46195361	4855043	7.172	2.180 #
13) T 2,4-DB	10.045	9.601f	24231301	4973216	21.952	16.632
14) T DINOSEB	11.134	10.034	114.2E6	98985419	22.538	60.589 #
15) T Picloram	10.963	11.025	50517846	7919910	5.949	2.321 #
-----						

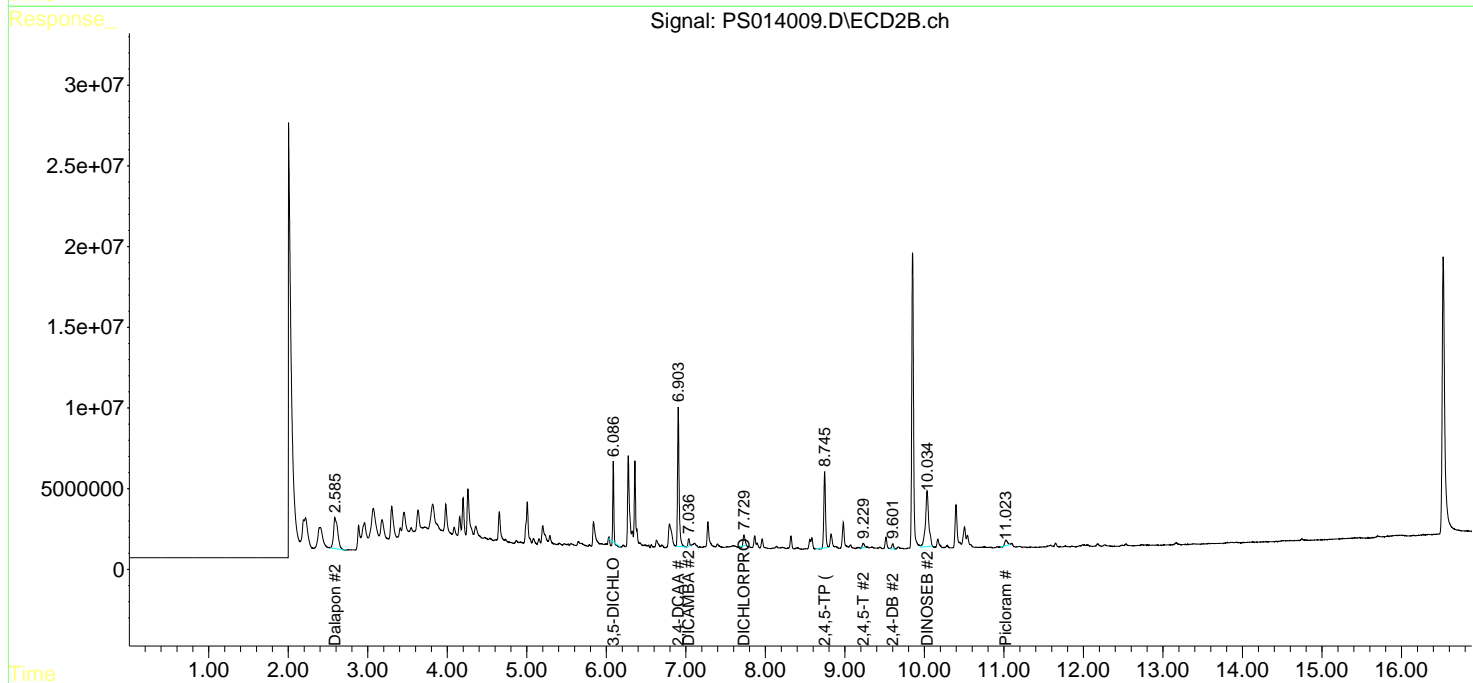
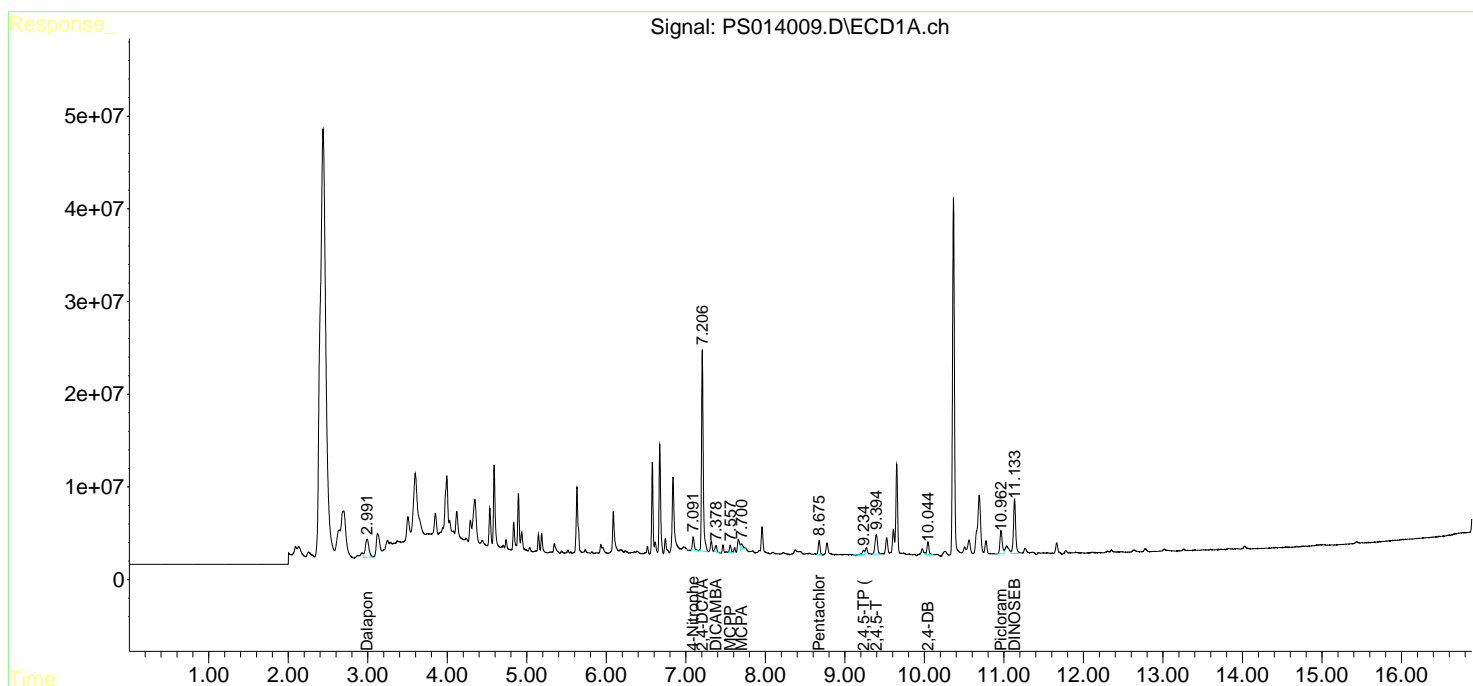
(f)=RT Delta > 1/2 Window (#)=Amounts differ by > 25% (m)=manual int.

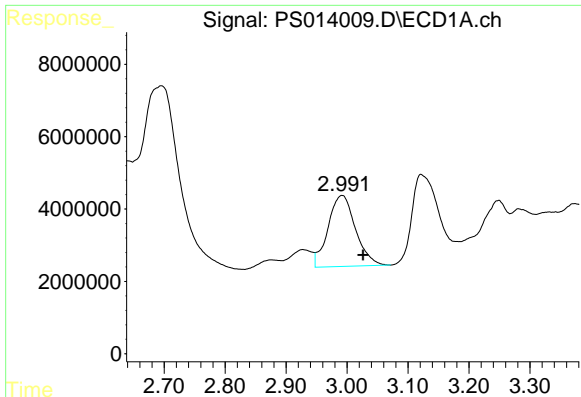
Data Path : Z:\pestpcbsrv\HPCHEM1\ECD\_S\Data\PS021221\  
 Data File : PS014009.D  
 Signal(s) : Signal #1: ECD1A.ch Signal #2: ECD2B.ch  
 Acq On : 12 Feb 2021 14:42  
 Operator : DD\AJ  
 Sample : PB134597TB  
 Misc :  
 ALS Vial : 6 Sample Multiplier: 1

Instrument :  
 ECD\_S  
 ClientSampled :

Integration File signal 1: autoint1.e  
 Integration File signal 2: autoint2.e  
 Quant Time: Feb 12 17:38:04 2021  
 Quant Method : Z:\pestpcbsrv\HPCHEM1\ECD\_S\Method\PS012721.M  
 Quant Title : 8080.M  
 QLast Update : Thu Jan 28 01:00:30 2021  
 Response via : Initial Calibration  
 Integrator: ChemStation

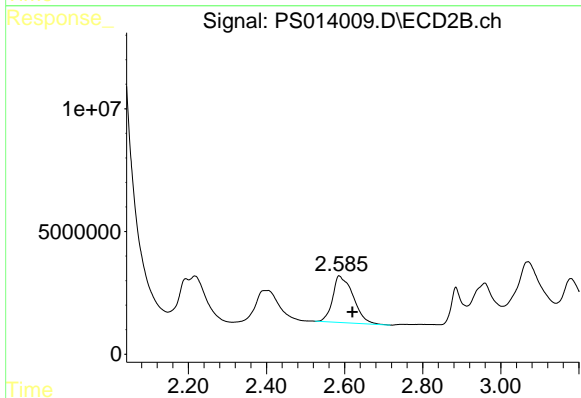
Volume Inj. : 2 µl  
 Signal #1 Phase : Rtx-CLPesticides Signal #2 Phase: Rtx-CLPesticides2  
 Signal #1 Info : 30M x 0.32mm x0.5 Signal #2 Info : 30M x 0.32mm x 0.25µm



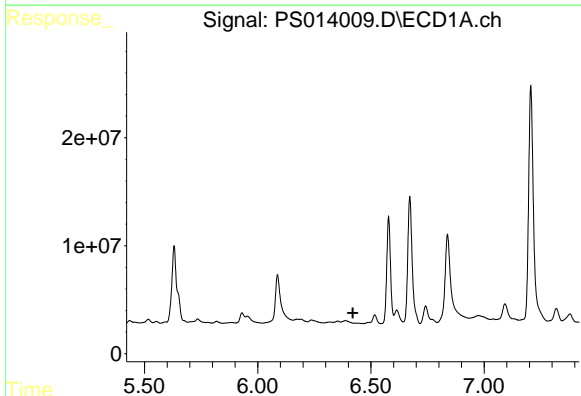


#1 Dalapon  
 R.T.: 2.992 min  
 Delta R.T.: -0.034 min  
 Response: 61472227  
 Conc: 49.25 ng/ml

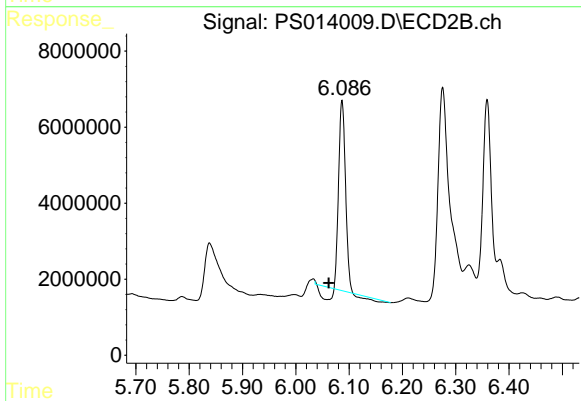
Instrument :  
 ECD\_S  
 ClientSampled :



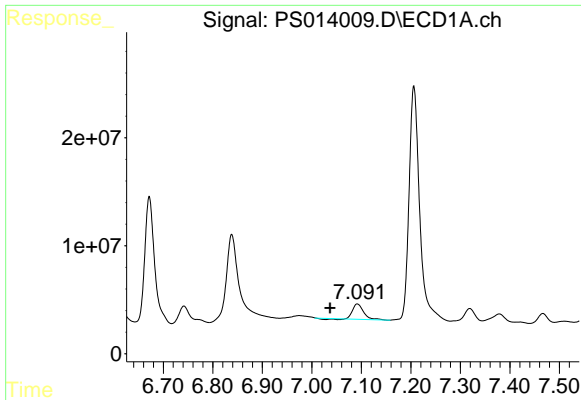
#1 Dalapon  
 R.T.: 2.586 min  
 Delta R.T.: -0.035 min  
 Response: 69173924  
 Conc: 134.54 ng/ml



#2 3,5-DICHLOROBENZOIC ACID  
 R.T.: 0.000 min  
 Exp R.T. : 6.420 min  
 Response: 0  
 Conc: N.D.

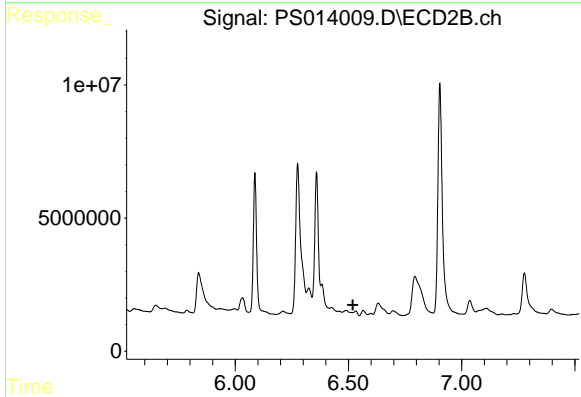


#2 3,5-DICHLOROBENZOIC ACID  
 R.T.: 6.087 min  
 Delta R.T.: 0.025 min  
 Response: 39537213  
 Conc: 65.12 ng/ml

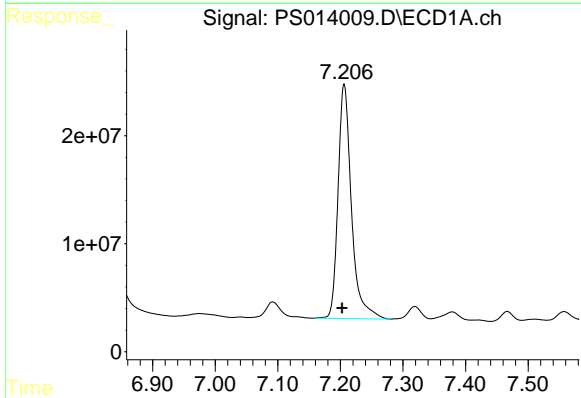


#3 4-Nitrophenol  
 R.T.: 7.092 min  
 Delta R.T.: 0.055 min  
 Response: 20447120  
 Conc: 37.63 ng/ml

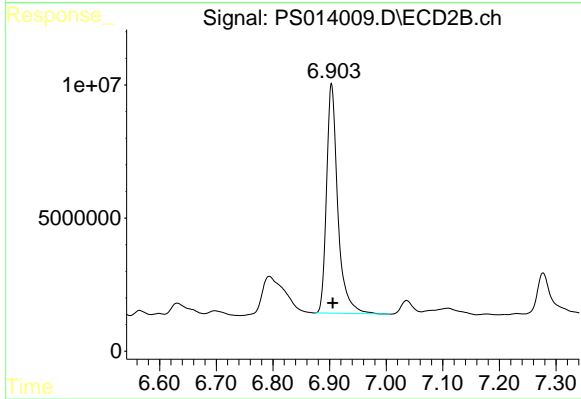
Instrument :  
 ECD\_S  
 ClientSampled :



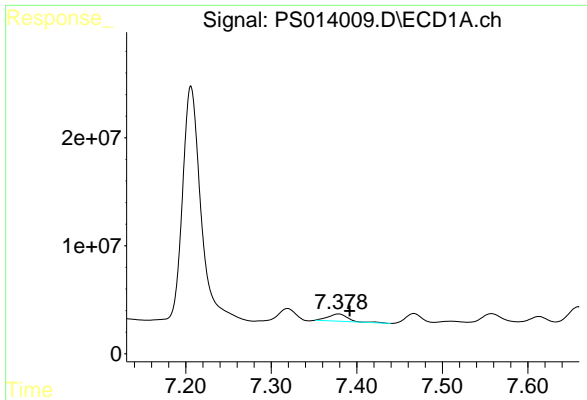
#3 4-Nitrophenol  
 R.T.: 0.000 min  
 Exp R.T. : 6.520 min  
 Response: 0  
 Conc: N.D.



#4 2,4-DCAA  
 R.T.: 7.206 min  
 Delta R.T.: 0.003 min  
 Response: 323105946  
 Conc: 300.32 ng/ml

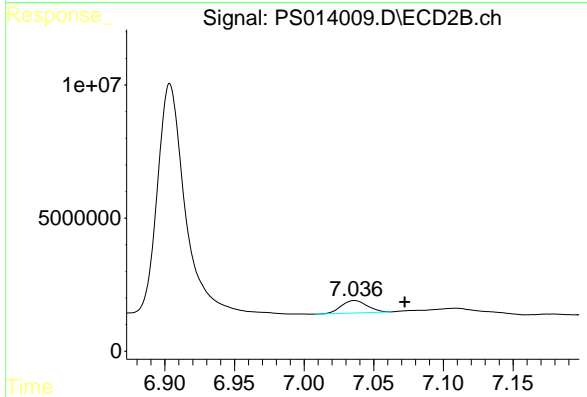


#4 2,4-DCAA  
 R.T.: 6.904 min  
 Delta R.T.: -0.003 min  
 Response: 119041519  
 Conc: 308.60 ng/ml

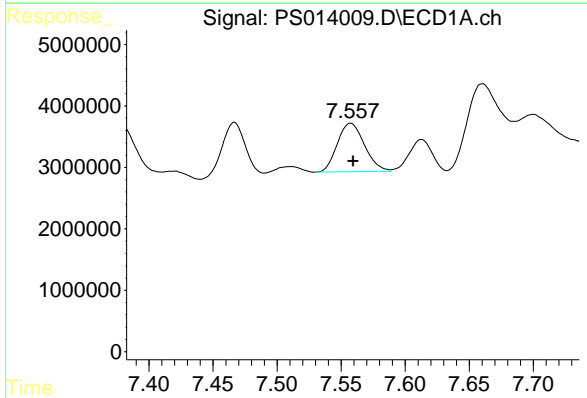


#5 DICAMBA  
 R.T.: 7.378 min  
 Delta R.T.: -0.013 min  
 Response: 10944224  
 Conc: 2.55 ng/ml

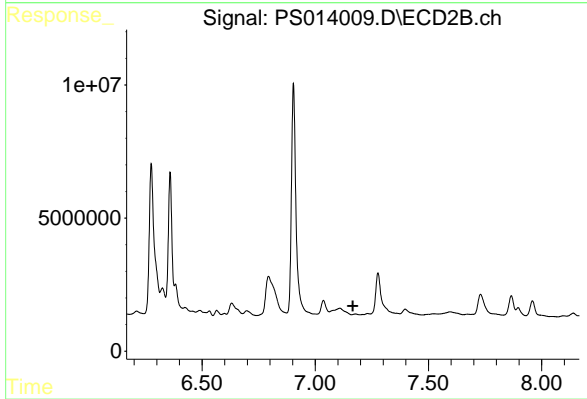
Instrument :  
 ECD\_S  
 ClientSampleId :



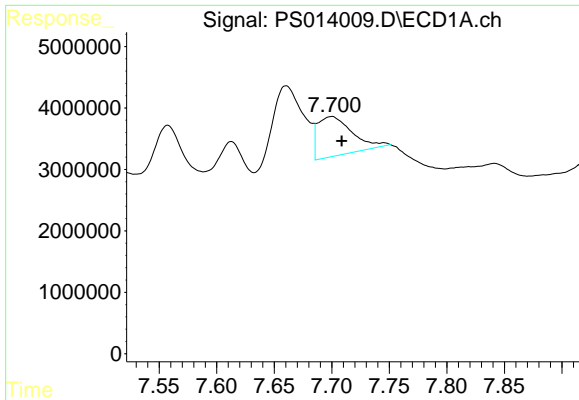
#5 DICAMBA  
 R.T.: 7.036 min  
 Delta R.T.: -0.036 min  
 Response: 6086860  
 Conc: 3.69 ng/ml



#6 MCPP  
 R.T.: 7.557 min  
 Delta R.T.: -0.002 min  
 Response: 11624911  
 Conc: 3.68 ug/ml

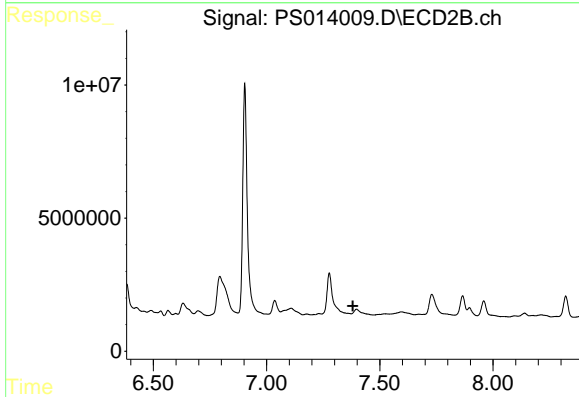


#6 MCPP  
 R.T.: 0.000 min  
 Exp R.T.: 7.167 min  
 Response: 0  
 Conc: N.D.

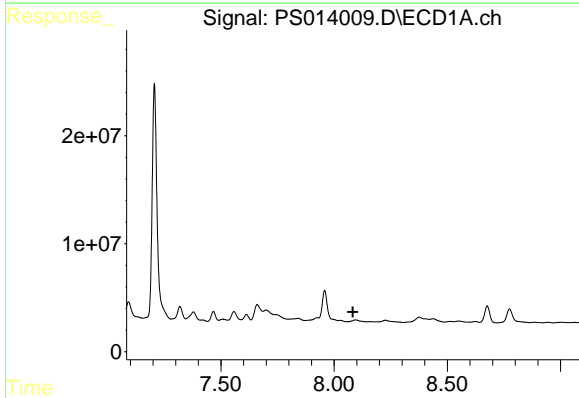


#7 MCPA  
 R.T.: 7.700 min  
 Delta R.T.: -0.009 min  
 Response: 13676931  
 Conc: 3.02 ug/ml

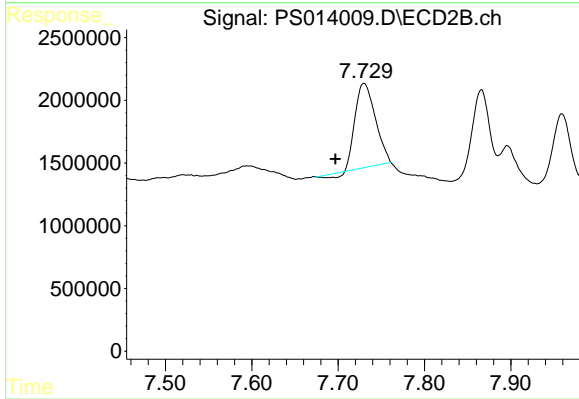
Instrument :  
 ECD\_S  
 ClientSampled :



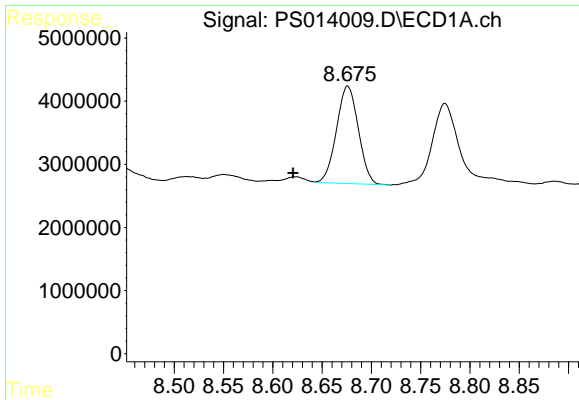
#7 MCPA  
 R.T.: 0.000 min  
 Exp R.T. : 7.381 min  
 Response: 0  
 Conc: N.D.



#8 DICHLORPROP  
 R.T.: 0.000 min  
 Exp R.T. : 8.083 min  
 Response: 0  
 Conc: N.D.

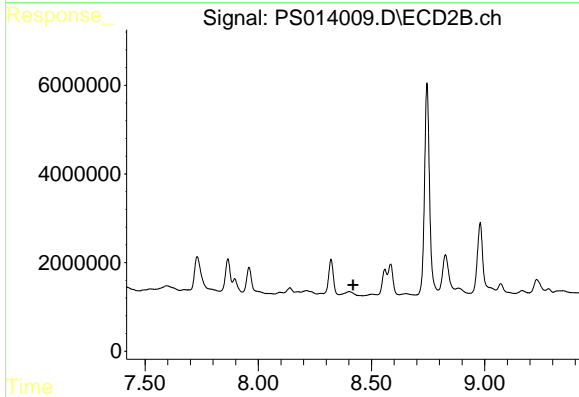


#8 DICHLORPROP  
 R.T.: 7.730 min  
 Delta R.T.: 0.033 min  
 Response: 10681335  
 Conc: 25.10 ng/ml

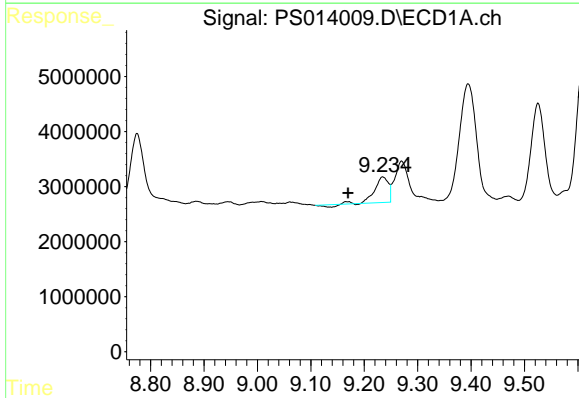


#10 Pentachlorophenol  
 R.T.: 8.676 min  
 Delta R.T.: 0.055 min  
 Response: 23849088  
 Conc: 1.51 ng/ml

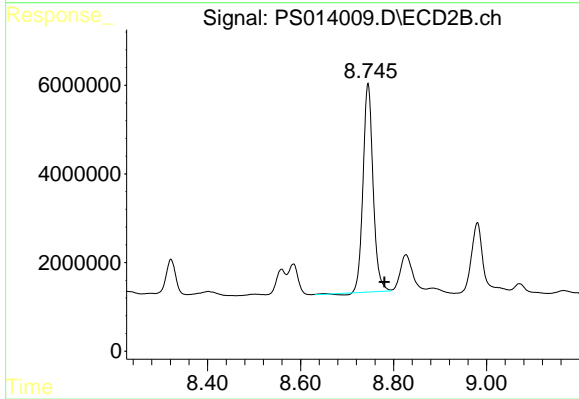
Instrument :  
 ECD\_S  
 ClientSampled :



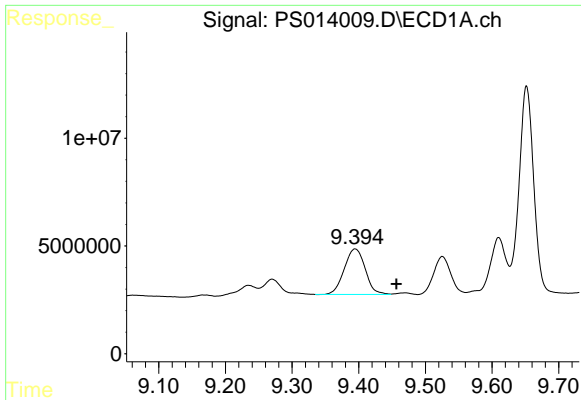
#10 Pentachlorophenol  
 R.T.: 0.000 min  
 Exp R.T. : 8.418 min  
 Response: 0  
 Conc: N.D.



#11 2,4,5-TP (SILVEX)  
 R.T.: 9.235 min  
 Delta R.T.: 0.065 min  
 Response: 7930871  
 Conc: 1.26 ng/ml



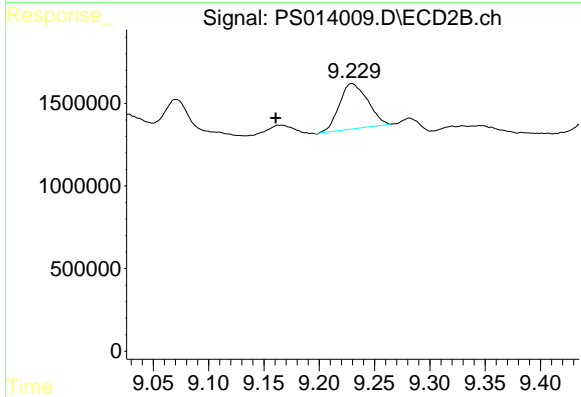
#11 2,4,5-TP (SILVEX)  
 R.T.: 8.745 min  
 Delta R.T.: -0.035 min  
 Response: 70259244  
 Conc: 30.61 ng/ml



#12 2,4,5-T

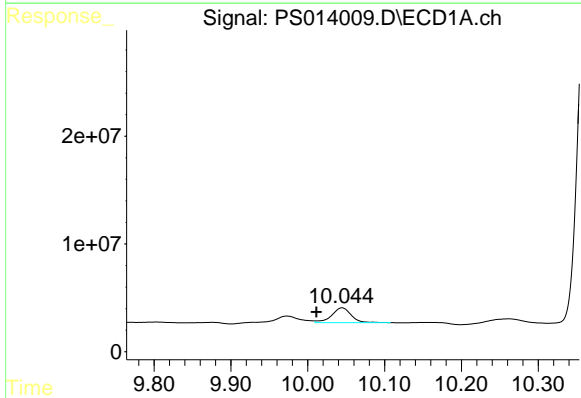
R.T.: 9.395 min  
 Delta R.T.: -0.062 min  
 Response: 46195361  
 Conc: 7.17 ng/ml

Instrument :  
 ECD\_S  
 ClientSampleId :



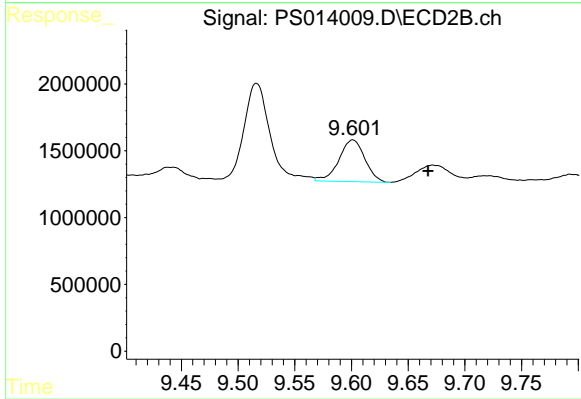
#12 2,4,5-T

R.T.: 9.230 min  
 Delta R.T.: 0.069 min  
 Response: 4855043  
 Conc: 2.18 ng/ml



#13 2,4-DB

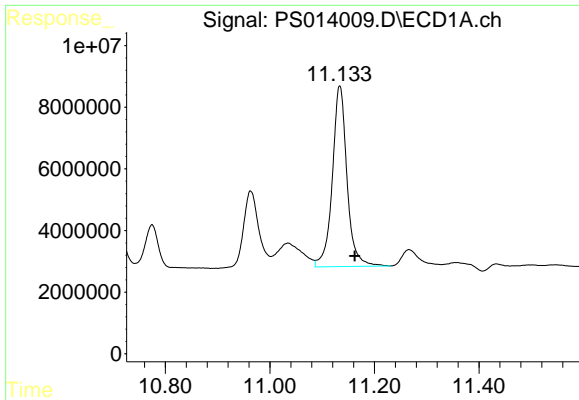
R.T.: 10.045 min  
 Delta R.T.: 0.034 min  
 Response: 24231301  
 Conc: 21.95 ng/ml



#13 2,4-DB

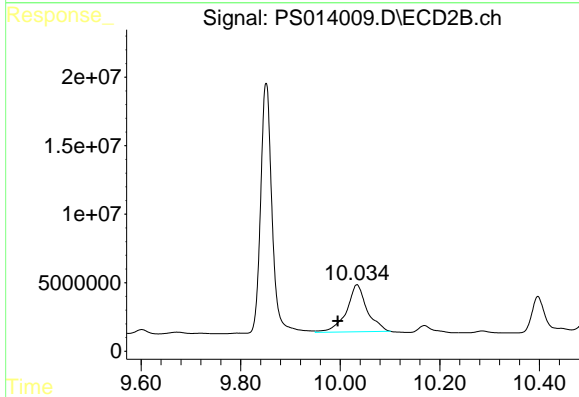
R.T.: 9.601 min  
 Delta R.T.: -0.066 min  
 Response: 4973216  
 Conc: 16.63 ng/ml



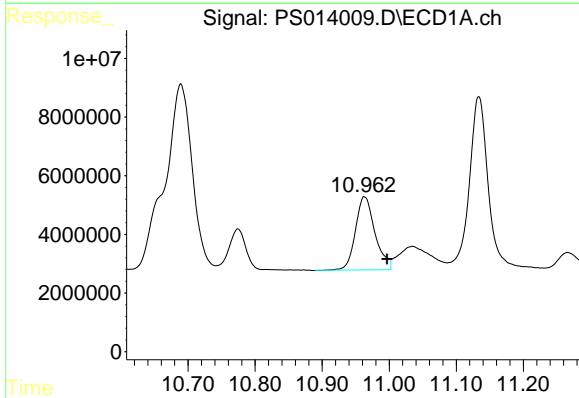


#14 DINOSEB  
 R.T.: 11.134 min  
 Delta R.T.: -0.028 min  
 Response: 114220883  
 Conc: 22.54 ng/ml

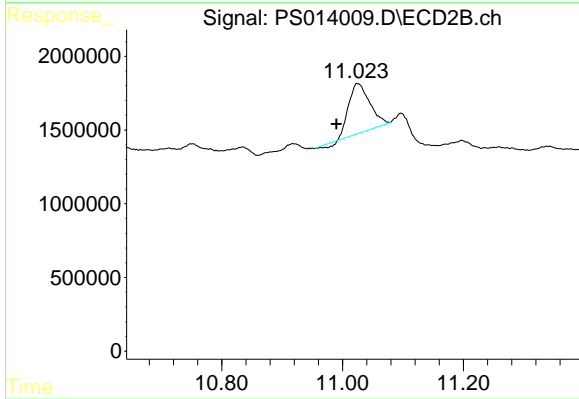
Instrument :  
 ECD\_S  
 ClientSampled :



#14 DINOSEB  
 R.T.: 10.034 min  
 Delta R.T.: 0.039 min  
 Response: 98985419  
 Conc: 60.59 ng/ml



#15 Picloram  
 R.T.: 10.963 min  
 Delta R.T.: -0.033 min  
 Response: 50517846  
 Conc: 5.95 ng/ml



#15 Picloram  
 R.T.: 11.025 min  
 Delta R.T.: 0.035 min  
 Response: 7919910  
 Conc: 2.32 ng/ml