

Data Path : Z:\pestpcbsrv\HPCHEM1\ECD_S\Data\PS021325\
 Data File : PS029155.D
 Signal(s) : Signal #1: ECD1A.ch Signal #2: ECD2B.ch
 Acq On : 13 Feb 2025 16:36
 Operator : AR\AJ
 Sample : PB166710BS
 Misc :
 ALS Vial : 5 Sample Multiplier: 1

Instrument :
 ECD_S
 ClientSampleId :
 PB166710BS

Integration File signal 1: autoint1.e
 Integration File signal 2: autoint2.e
 Quant Time: Feb 14 01:19:41 2025
 Quant Method : Z:\pestpcbsrv\HPCHEM1\ECD_S\Method\PS021225.M
 Quant Title : 8080.M
 QLast Update : Wed Feb 12 09:17:13 2025
 Response via : Initial Calibration
 Integrator: ChemStation

Volume Inj. : 1 µl
 Signal #1 Phase : ZB-MR1 Signal #2 Phase: ZB-MR2
 Signal #1 Info : 30M x 0.32mm x0.5 Signal #2 Info : 30M x 0.32mm x 0.25µm

Compound	RT#1	RT#2	Resp#1	Resp#2	ng/ml	ng/ml

System Monitoring Compounds						
4) S 2,4-DCAA	7.190	7.663	1636.4E6	586.5E6	592.074	554.126
Target Compounds						
1) T Dalapon	2.613	2.660	1403.6E6	858.2E6	443.749	453.302
2) T 3,5-DICHL...	6.368	6.631	2197.1E6	813.0E6	554.581	531.409
3) T 4-Nitroph...	6.988	7.193	942.2E6	456.7E6	552.594	526.555
5) T DICAMBA	7.374	7.858	6842.1E6	2967.3E6	568.189	536.908
6) T MCPP	7.555	7.962	379.4E6	136.8E6	54.760	55.435
7) T MCPA	7.703	8.202	526.2E6	190.1E6	54.973	54.348
8) T DICHLORPROP	8.076	8.569	1789.7E6	733.1E6	566.523	532.352
9) T 2,4-D	8.306	8.895	1888.2E6	765.4E6	561.284	534.270
10) T Pentachlo...	8.602	9.416	28847.5E6	13390.4E6	611.773	555.168
11) T 2,4,5-TP ...	9.176	9.793	11121.8E6	5367.5E6	573.575	549.487
12) T 2,4,5-T	9.467	10.209	11076.4E6	5014.8E6	571.842	541.421
13) T 2,4-DB	10.037	10.773	2026.9E6	503.6E6	545.417	530.109
14) T DINOSEB	11.238	11.150	9065.2E6	3357.8E6	625.161	608.886
15) T Picloram	11.051	12.231	16874.0E6	6415.7E6	528.096	466.636
16) T DCPA	11.534	12.187	16981.9E6	6815.2E6	585.658	552.516

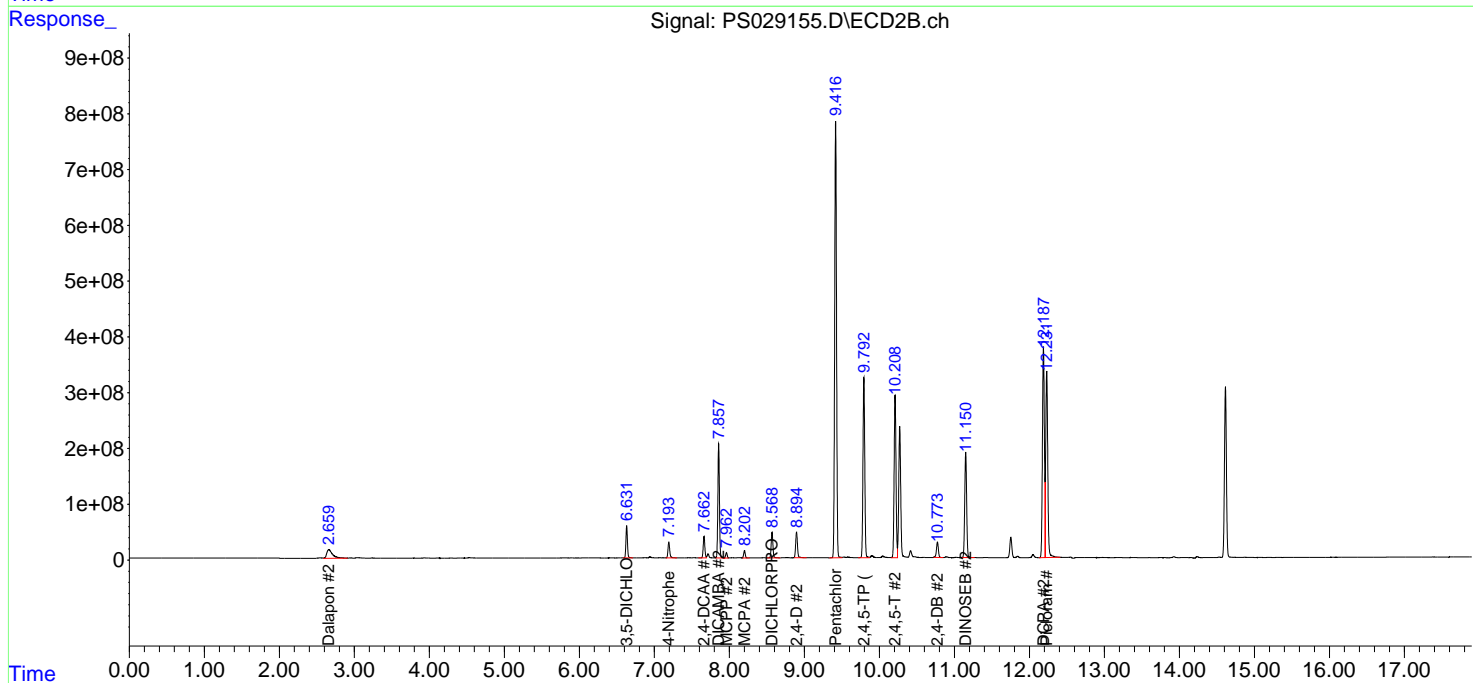
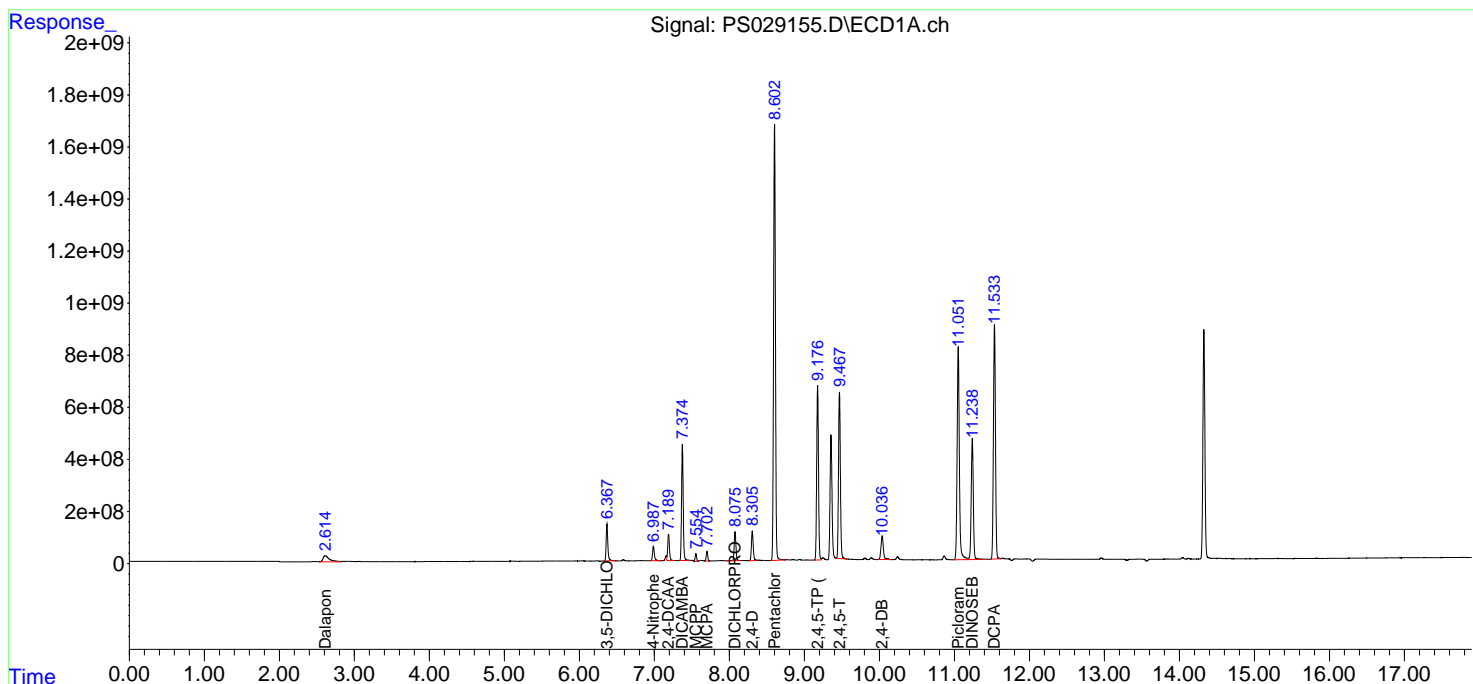
(f)=RT Delta > 1/2 Window (#)=Amounts differ by > 25% (m)=manual int.

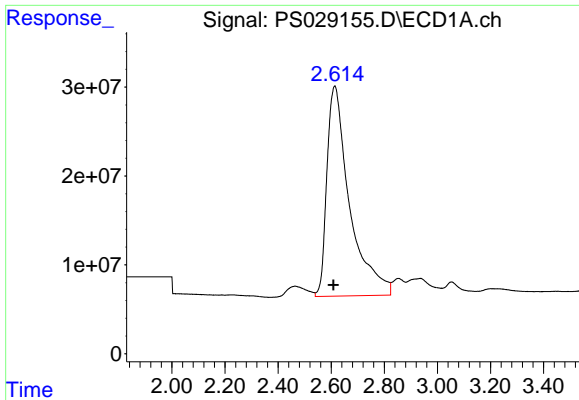
Data Path : Z:\pestpcbsrv\HPCHEM1\ECD_S\Data\PS021325\
 Data File : PS029155.D
 Signal(s) : Signal #1: ECD1A.ch Signal #2: ECD2B.ch
 Acq On : 13 Feb 2025 16:36
 Operator : AR\AJ
 Sample : PB166710BS
 Misc :
 ALS Vial : 5 Sample Multiplier: 1

Instrument :
 ECD_S
 ClientSampleId :
 PB166710BS

Integration File signal 1: autoint1.e
 Integration File signal 2: autoint2.e
 Quant Time: Feb 14 01:19:41 2025
 Quant Method : Z:\pestpcbsrv\HPCHEM1\ECD_S\Method\PS021225.M
 Quant Title : 8080.M
 QLast Update : Wed Feb 12 09:17:13 2025
 Response via : Initial Calibration
 Integrator: ChemStation

Volume Inj. : 1 µl
 Signal #1 Phase : ZB-MR1 Signal #2 Phase: ZB-MR2
 Signal #1 Info : 30M x 0.32mm x0.5 Signal #2 Info : 30M x 0.32mm x 0.25µm

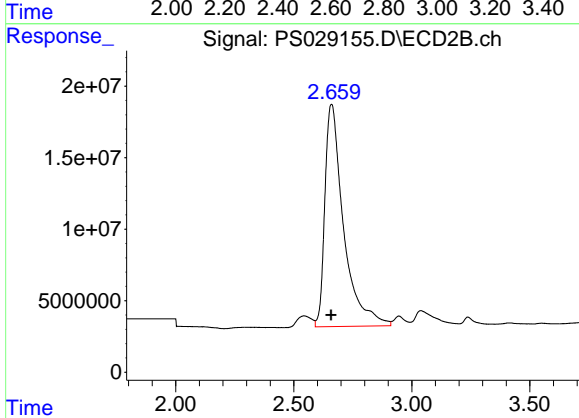




#1 Dalapon

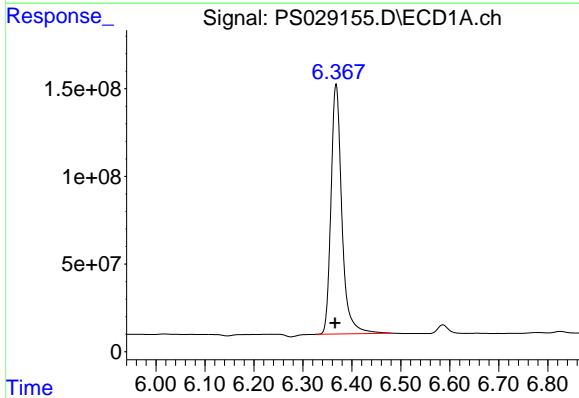
R.T.: 2.613 min
 Delta R.T.: 0.004 min
 Response: 1403601348
 Conc: 443.75 ng/ml

Instrument :
 ECD_S
 ClientSampleId :
 PB166710BS



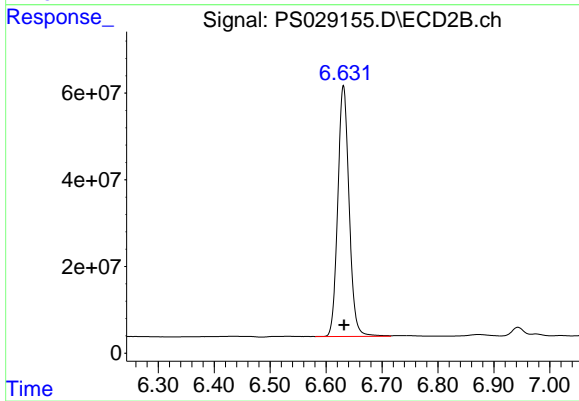
#1 Dalapon

R.T.: 2.660 min
 Delta R.T.: 0.002 min
 Response: 858237650
 Conc: 453.30 ng/ml



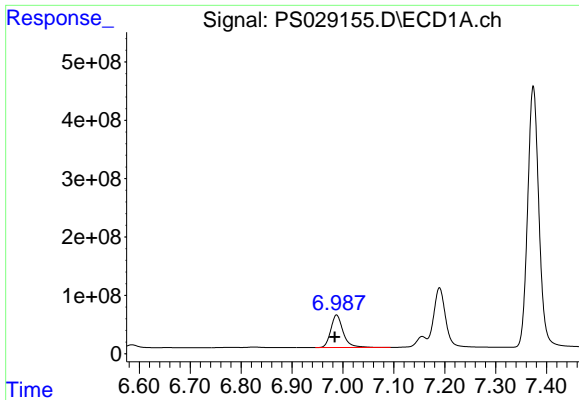
#2 3,5-DICHLOROBENZOIC ACID

R.T.: 6.368 min
 Delta R.T.: 0.002 min
 Response: 2197122413
 Conc: 554.58 ng/ml



#2 3,5-DICHLOROBENZOIC ACID

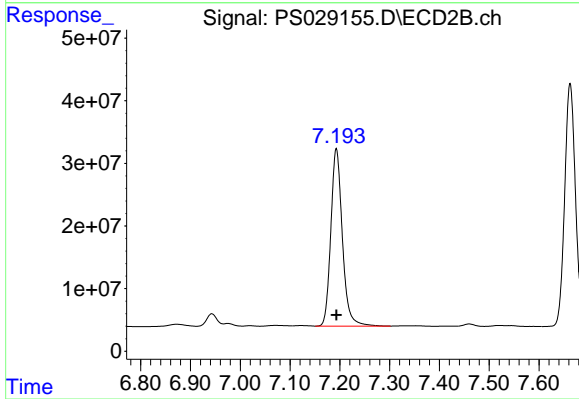
R.T.: 6.631 min
 Delta R.T.: 0.000 min
 Response: 812984279
 Conc: 531.41 ng/ml



#3 4-Nitrophenol

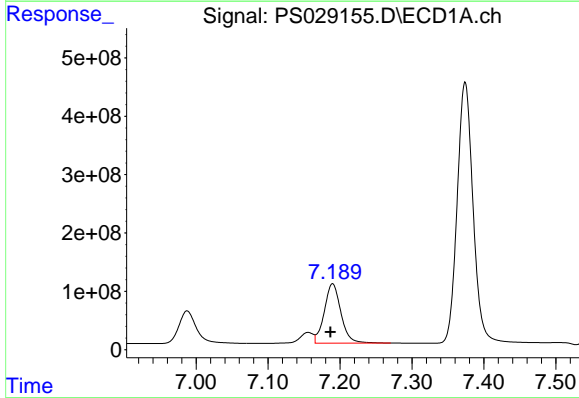
R.T.: 6.988 min
 Delta R.T.: 0.004 min
 Response: 942211630
 Conc: 552.59 ng/ml

Instrument :
 ECD_S
 ClientSampleId :
 PB166710BS



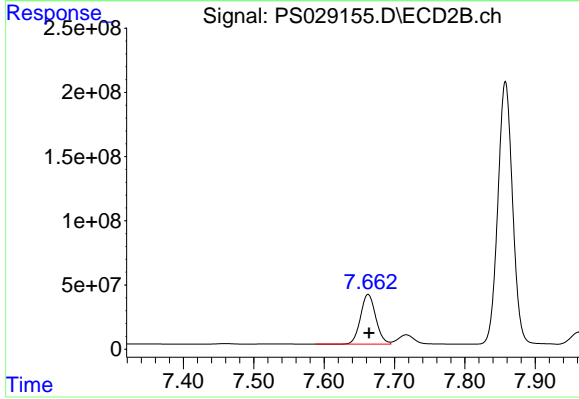
#3 4-Nitrophenol

R.T.: 7.193 min
 Delta R.T.: 0.000 min
 Response: 456680940
 Conc: 526.56 ng/ml



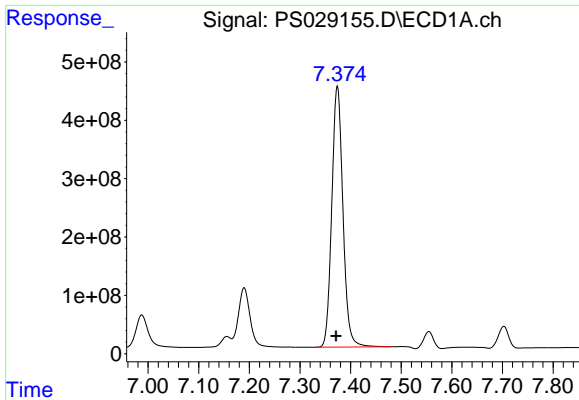
#4 2,4-DCAA

R.T.: 7.190 min
 Delta R.T.: 0.003 min
 Response: 1636407248
 Conc: 592.07 ng/ml



#4 2,4-DCAA

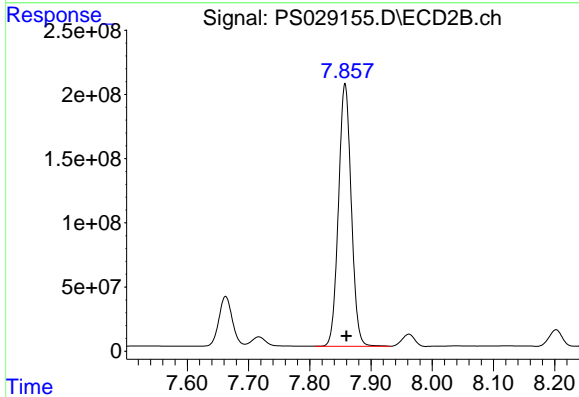
R.T.: 7.663 min
 Delta R.T.: -0.002 min
 Response: 586539619
 Conc: 554.13 ng/ml



#5 DICAMBA

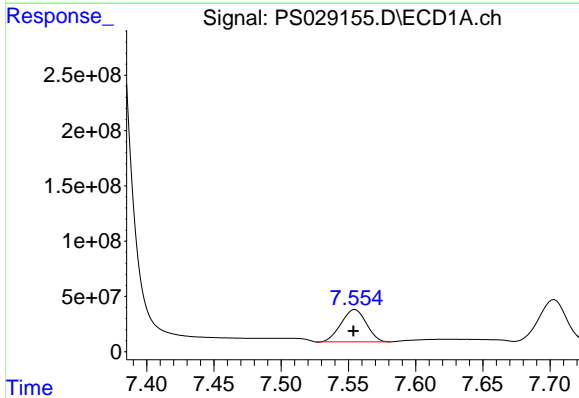
R.T.: 7.374 min
 Delta R.T.: 0.003 min
 Response: 6842104293
 Conc: 568.19 ng/ml

Instrument :
 ECD_S
 ClientSampleId :
 PB166710BS



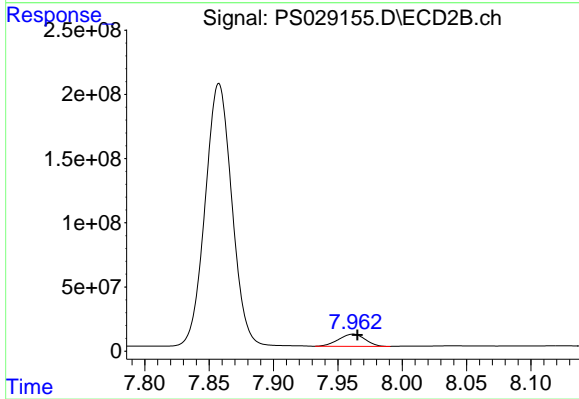
#5 DICAMBA

R.T.: 7.858 min
 Delta R.T.: -0.002 min
 Response: 2967274850
 Conc: 536.91 ng/ml



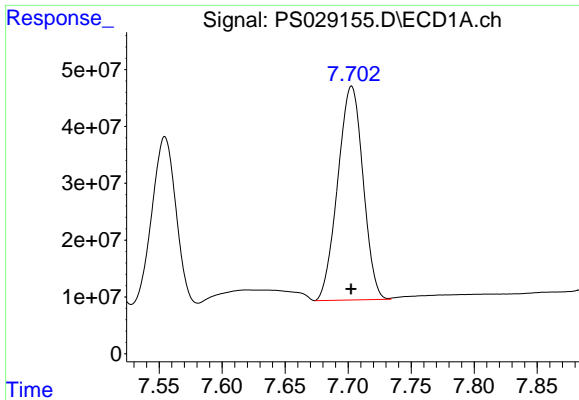
#6 MCPP

R.T.: 7.555 min
 Delta R.T.: 0.000 min
 Response: 379395720
 Conc: 54.76 ug/ml



#6 MCPP

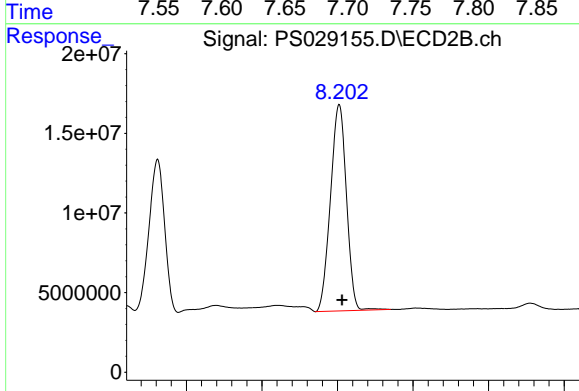
R.T.: 7.962 min
 Delta R.T.: -0.003 min
 Response: 136769637
 Conc: 55.43 ug/ml



#7 MCPA

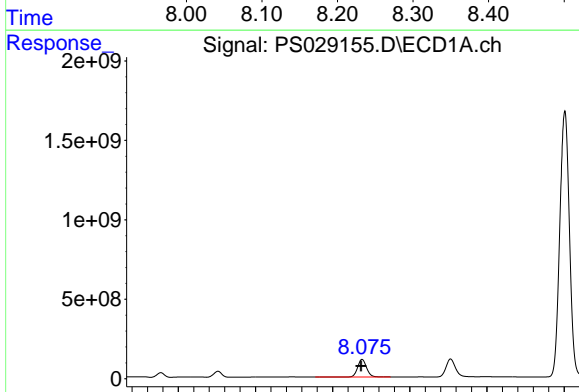
R.T.: 7.703 min
 Delta R.T.: 0.000 min
 Response: 526204521
 Conc: 54.97 ug/ml

Instrument :
 ECD_S
 ClientSampleId :
 PB166710BS



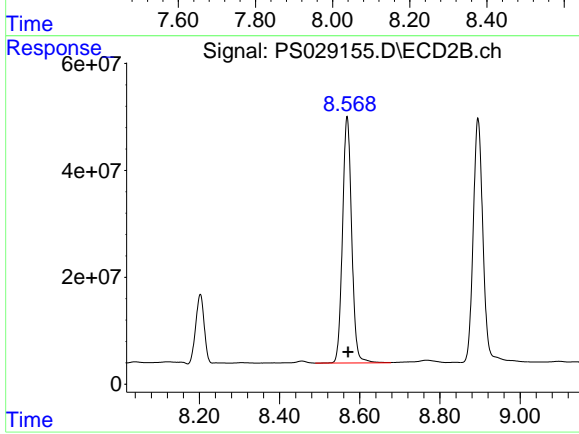
#7 MCPA

R.T.: 8.202 min
 Delta R.T.: -0.004 min
 Response: 190131050
 Conc: 54.35 ug/ml



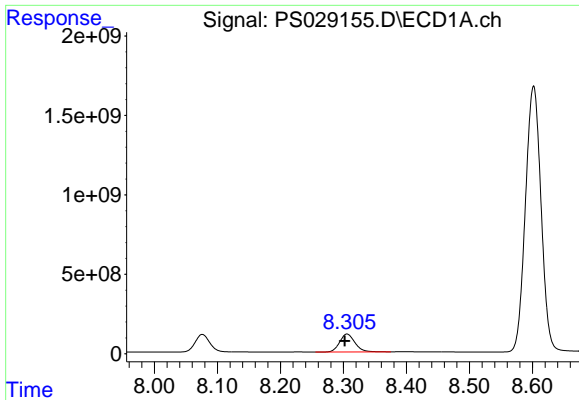
#8 DICHLORPROP

R.T.: 8.076 min
 Delta R.T.: 0.002 min
 Response: 1789680206
 Conc: 566.52 ng/ml



#8 DICHLORPROP

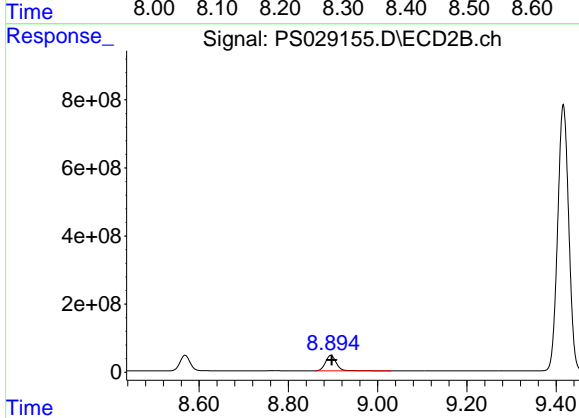
R.T.: 8.569 min
 Delta R.T.: -0.002 min
 Response: 733096540
 Conc: 532.35 ng/ml



#9 2,4-D

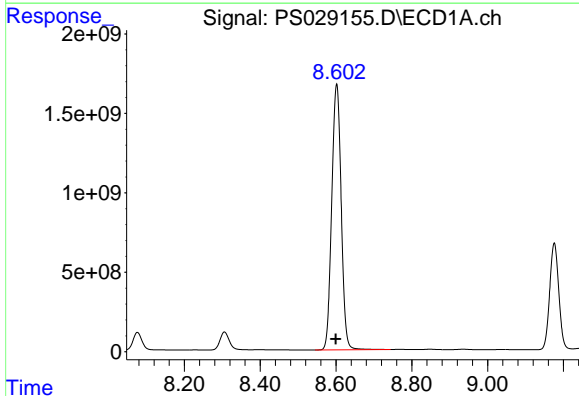
R.T.: 8.306 min
Delta R.T.: 0.003 min
Response: 1888209637
Conc: 561.28 ng/ml

Instrument :
ECD_S
ClientSampleId :
PB166710BS



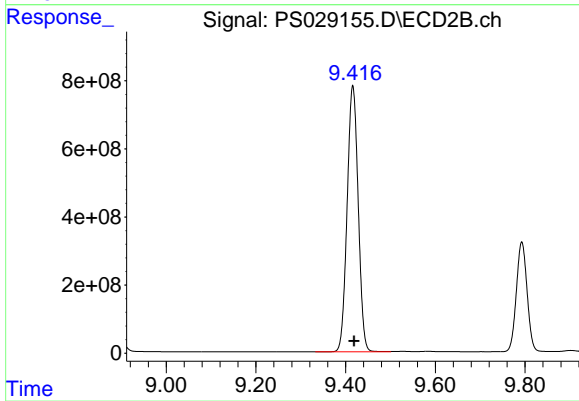
#9 2,4-D

R.T.: 8.895 min
Delta R.T.: -0.002 min
Response: 765410069
Conc: 534.27 ng/ml



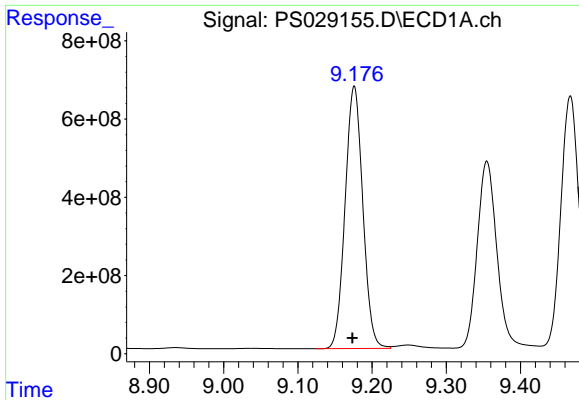
#10 Pentachlorophenol

R.T.: 8.602 min
Delta R.T.: 0.003 min
Response: 28847513879
Conc: 611.77 ng/ml



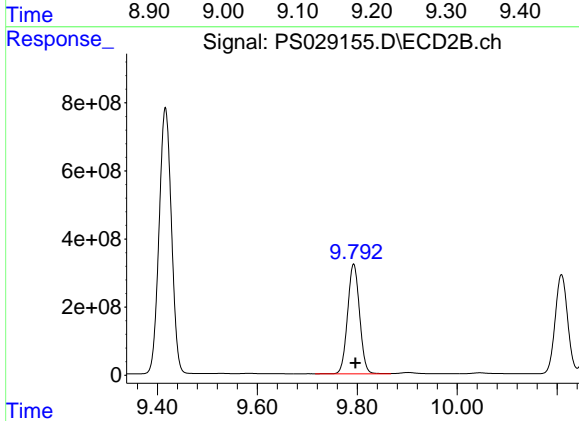
#10 Pentachlorophenol

R.T.: 9.416 min
Delta R.T.: -0.003 min
Response: 13390436587
Conc: 555.17 ng/ml

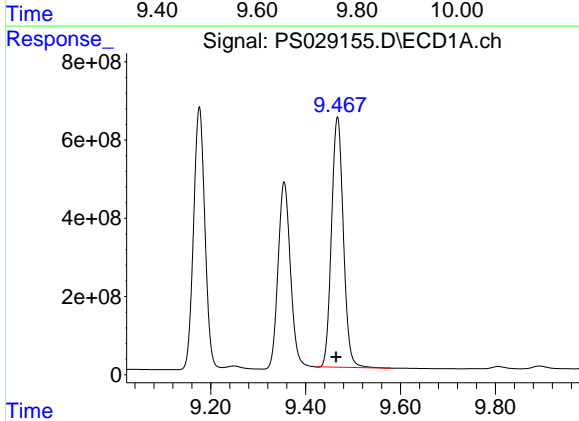


#11 2,4,5-TP (SILVEX)
 R.T.: 9.176 min
 Delta R.T.: 0.003 min
 Response: 11121816693
 Conc: 573.58 ng/ml

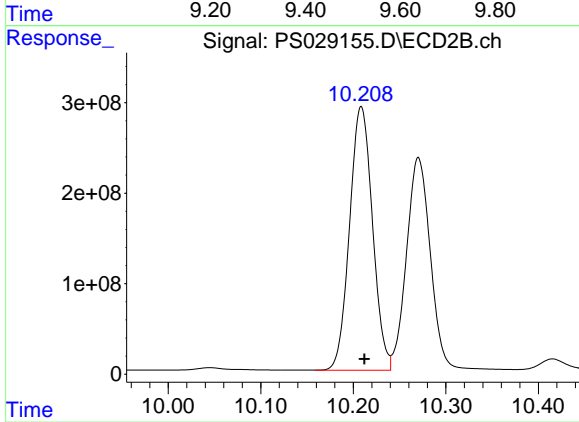
Instrument :
 ECD_S
 ClientSampleId :
 PB166710BS



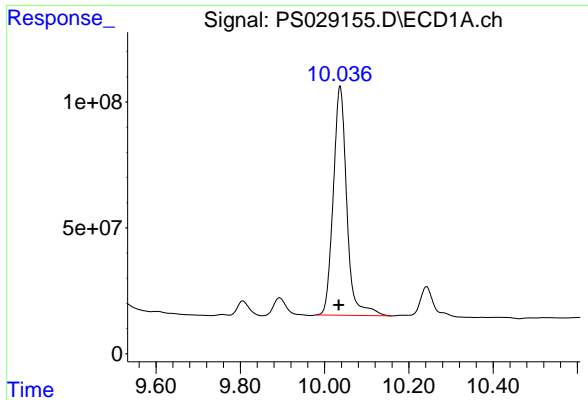
#11 2,4,5-TP (SILVEX)
 R.T.: 9.793 min
 Delta R.T.: -0.003 min
 Response: 5367504625
 Conc: 549.49 ng/ml



#12 2,4,5-T
 R.T.: 9.467 min
 Delta R.T.: 0.002 min
 Response: 11076387110
 Conc: 571.84 ng/ml



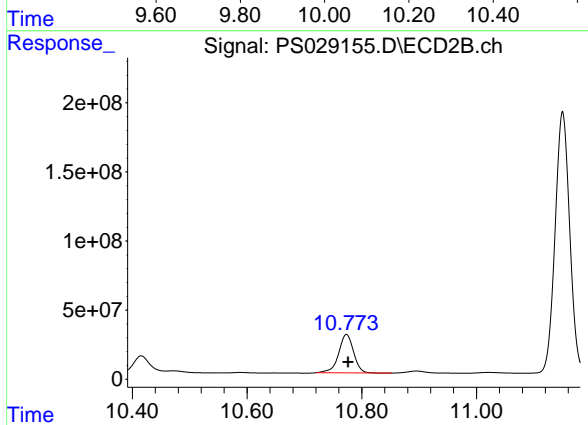
#12 2,4,5-T
 R.T.: 10.209 min
 Delta R.T.: -0.003 min
 Response: 5014792103
 Conc: 541.42 ng/ml



#13 2,4-DB

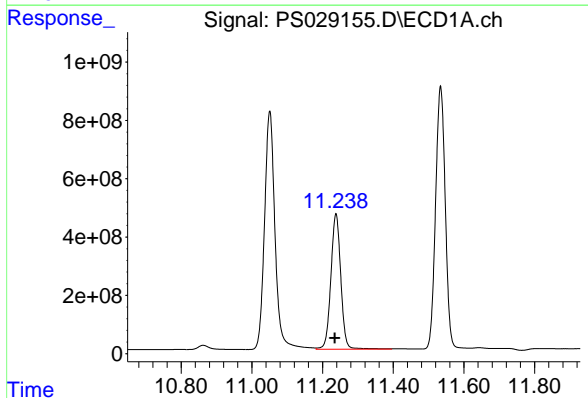
R.T.: 10.037 min
Delta R.T.: 0.003 min
Response: 2026928042
Conc: 545.42 ng/ml

Instrument :
ECD_S
ClientSampleId :
PB166710BS



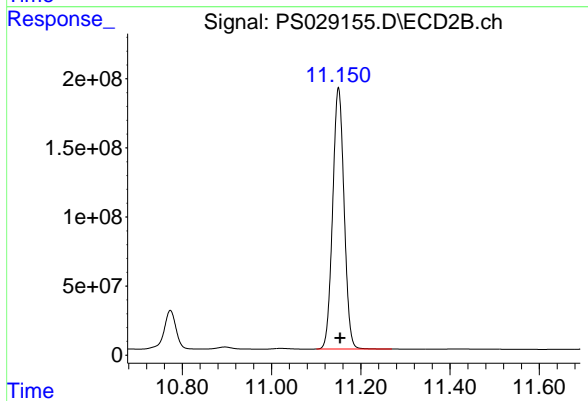
#13 2,4-DB

R.T.: 10.773 min
Delta R.T.: -0.003 min
Response: 503598027
Conc: 530.11 ng/ml



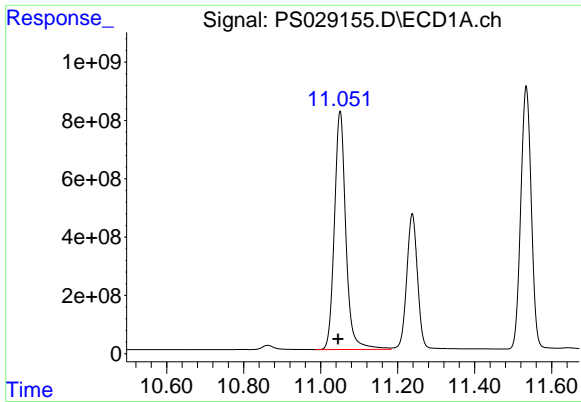
#14 DINOSEB

R.T.: 11.238 min
Delta R.T.: 0.003 min
Response: 9065214633
Conc: 625.16 ng/ml



#14 DINOSEB

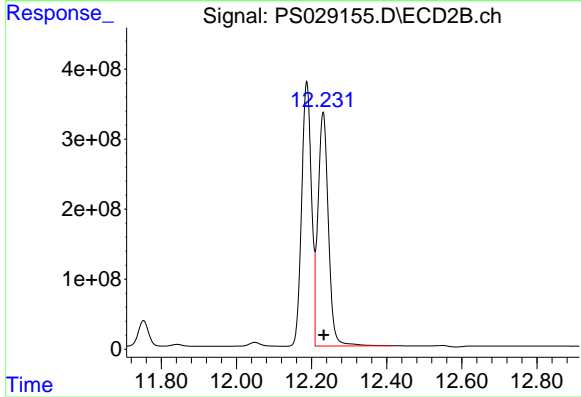
R.T.: 11.150 min
Delta R.T.: -0.004 min
Response: 3357819842
Conc: 608.89 ng/ml



#15 Picloram

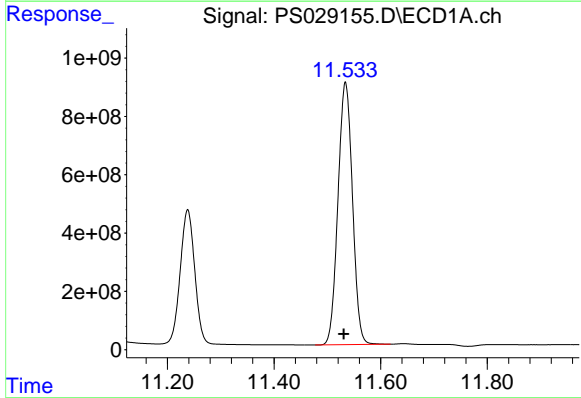
R.T.: 11.051 min
 Delta R.T.: 0.005 min
 Response: 16873968992
 Conc: 528.10 ng/ml

Instrument :
 ECD_S
 ClientSampleId :
 PB166710BS



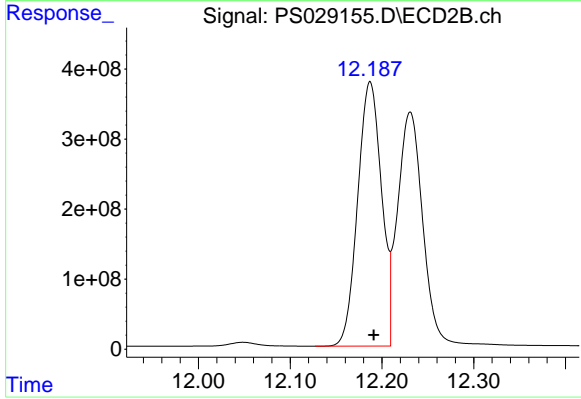
#15 Picloram

R.T.: 12.231 min
 Delta R.T.: -0.002 min
 Response: 6415719055
 Conc: 466.64 ng/ml



#16 DCPA

R.T.: 11.534 min
 Delta R.T.: 0.003 min
 Response: 16981919845
 Conc: 585.66 ng/ml



#16 DCPA

R.T.: 12.187 min
 Delta R.T.: -0.004 min
 Response: 6815191050
 Conc: 552.52 ng/ml