

Data Path : Z:\pestpcbsrv\HPCHEM1\ECD\_S\Data\PS021419\  
 Data File : PS003192.D  
 Signal(s) : Signal #1: ECD1A.ch Signal #2: ECD2B.ch  
 Acq On : 14 Feb 2019 21:16  
 Operator : EI\SJ  
 Sample : I.BLK  
 Misc :  
 ALS Vial : 2 Sample Multiplier: 1

Instrument :  
 ECD\_S  
 ClientSampleId :  
 I.BLK

Integration File signal 1: autoint1.e  
 Integration File signal 2: autoint2.e  
 Quant Time: Feb 14 23:38:22 2019  
 Quant Method : Z:\pestpcbsrv\HPCHEM1\ECD\_S\Method\PS012819.M  
 Quant Title : 8080.M  
 QLast Update : Tue Jan 29 06:11:45 2019  
 Response via : Initial Calibration  
 Integrator: ChemStation

Volume Inj. : 2 µl  
 Signal #1 Phase : Rtx-CLPesticides Signal #2 Phase: Rtx-CLPesticides2  
 Signal #1 Info : 30M x 0.32mm x0.5 Signal #2 Info : 30M x 0.32mm x 0.25µm

Compound	RT#1	RT#2	Resp#1	Resp#2	ng/ml	ng/ml
-----						
System Monitoring Compounds						
4) S 2,4-DCAA	11.279	10.777	121.8E6	193.0E6	320.843	451.414 #

Target Compounds  
 -----

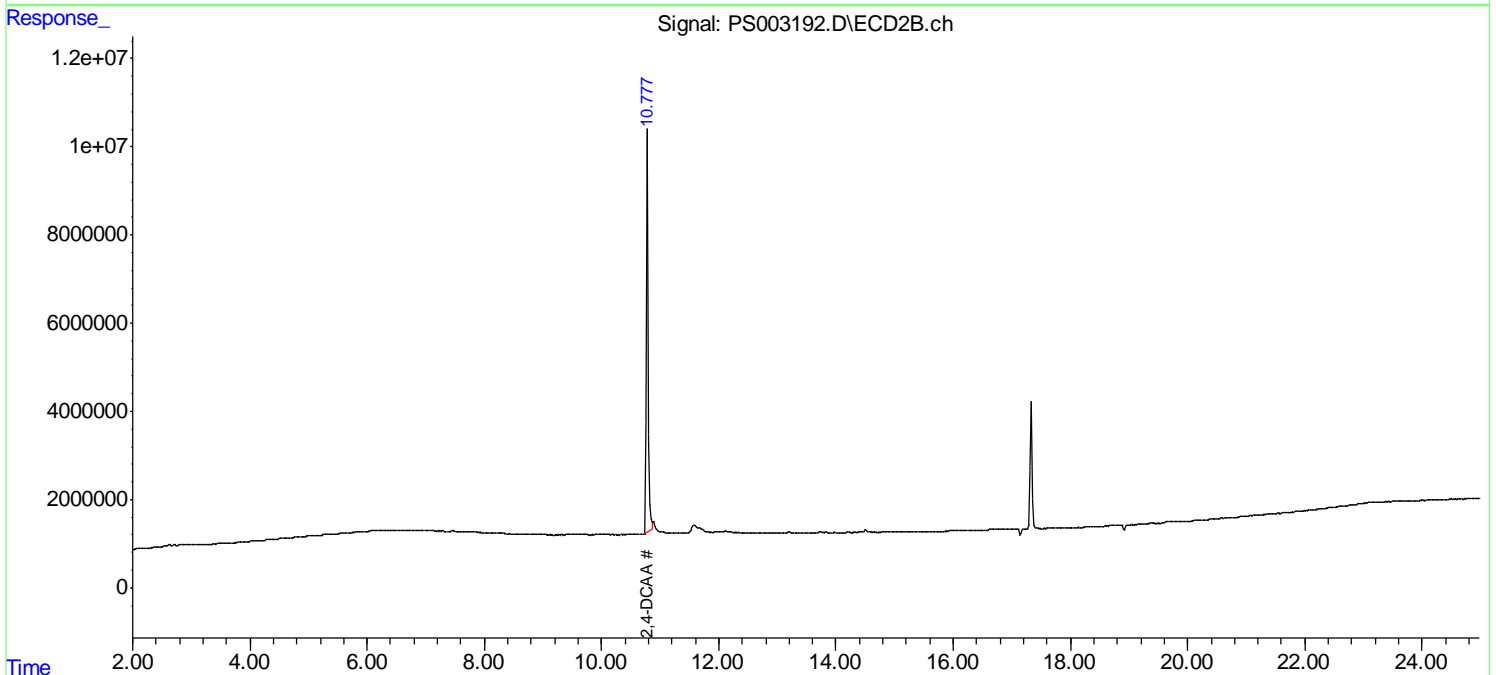
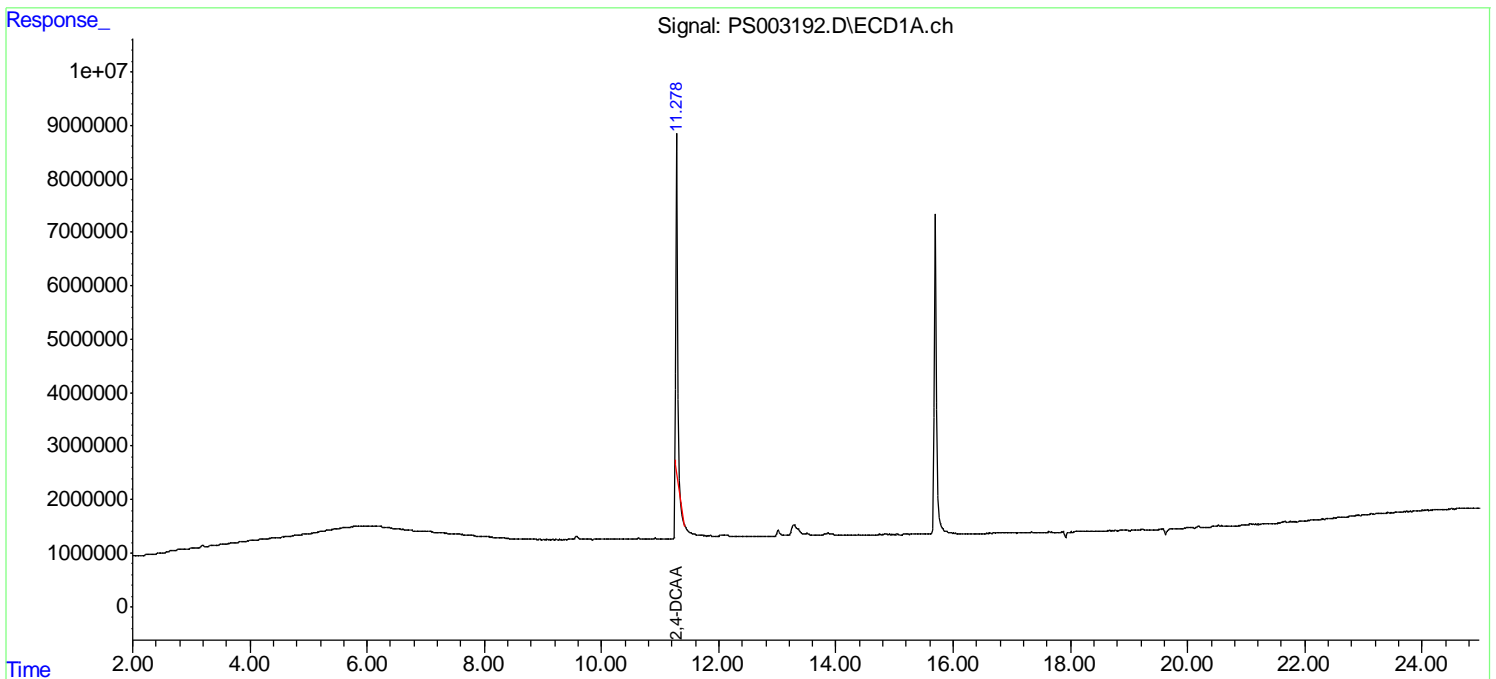
(f)=RT Delta > 1/2 Window (#)=Amounts differ by > 25% (m)=manual int.

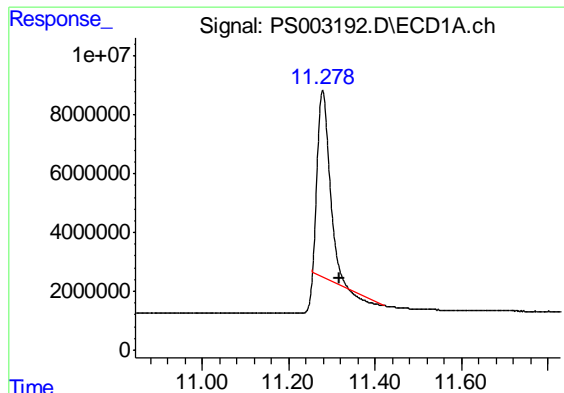
Data Path : Z:\pestpcbsrv\HPCHEM1\ECD\_S\Data\PS021419\  
Data File : PS003192.D  
Signal(s) : Signal #1: ECD1A.ch Signal #2: ECD2B.ch  
Acq On : 14 Feb 2019 21:16  
Operator : EI\SJ  
Sample : I.BLK  
Misc :  
ALS Vial : 2 Sample Multiplier: 1

Instrument :  
ECD\_S  
ClientSampleId :  
I.BLK

Integration File signal 1: autoint1.e  
Integration File signal 2: autoint2.e  
Quant Time: Feb 14 23:38:22 2019  
Quant Method : Z:\pestpcbsrv\HPCHEM1\ECD\_S\Method\PS012819.M  
Quant Title : 8080.M  
QLast Update : Tue Jan 29 06:11:45 2019  
Response via : Initial Calibration  
Integrator: ChemStation

Volume Inj. : 2 µl  
Signal #1 Phase : Rtx-CLPesticides Signal #2 Phase: Rtx-CLPesticides2  
Signal #1 Info : 30M x 0.32mm x0.5 Signal #2 Info : 30M x 0.32mm x 0.25µm

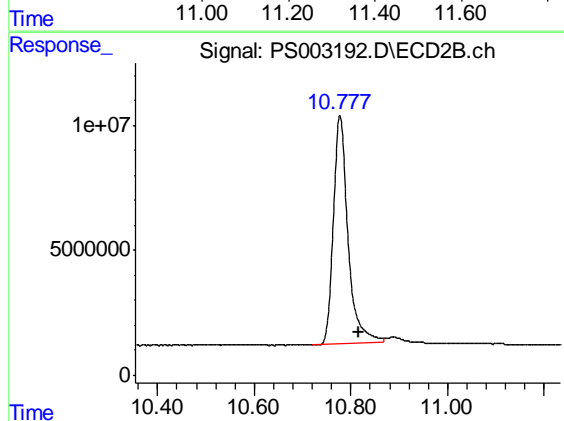




#4 2,4-DCAA

R.T.: 11.279 min  
Delta R.T.: -0.039 min  
Response: 121805102  
Conc: 320.84 ng/ml

Instrument :  
ECD\_S  
ClientSampleId :  
I.BLK



#4 2,4-DCAA

R.T.: 10.777 min  
Delta R.T.: -0.039 min  
Response: 193000177  
Conc: 451.41 ng/ml