

Data Path : Z:\pestpcbsrv\HPCHEM1\ECD_S\Data\PS021424\
 Data File : PS025968.D
 Signal(s) : Signal #1: ECD1A.ch Signal #2: ECD2B.ch
 Acq On : 15 Feb 2024 03:45
 Operator : AR\AJ
 Sample : P1385-02MS
 Misc :
 ALS Vial : 29 Sample Multiplier: 1

Instrument :
 ECD_S
 ClientSampleId :
 C0AA7MS

Integration File signal 1: autoint1.e
 Integration File signal 2: autoint2.e
 Quant Time: Feb 15 05:16:27 2024
 Quant Method : Z:\pestpcbsrv\HPCHEM1\ECD_S\Method\PS021424.M
 Quant Title : 8080.M
 QLast Update : Wed Feb 14 15:17:36 2024
 Response via : Initial Calibration
 Integrator: ChemStation

Volume Inj. : 2 µl
 Signal #1 Phase : Rtx-CLPesticides Signal #2 Phase: Rtx-CLPesticides2
 Signal #1 Info : 30M x 0.32mm x0.5 Signal #2 Info : 30M x 0.32mm x 0.25µm

Compound	RT#1	RT#2	Resp#1	Resp#2	ng/ml	ng/ml

System Monitoring Compounds						
4) S 2,4-DCAA	7.276	7.804	2028.2E6	427.5E6	766.340	489.786 #
Target Compounds						
1) T Dalapon	2.680	2.729	1774.8E6	681.3E6	396.745	417.824
2) T 3,5-DICHL...	6.442	6.751	1795.5E6	585.8E6	462.492	438.309
3) T 4-Nitroph...	7.072	7.331	64668336	12061935	40.787	25.017 #
5) T DICAMBA	7.465	8.006	4684.5E6	1602.8E6	425.154	414.813
6) T MCPP	7.647	8.105	335.6E6	122.4E6	42.472	45.385
7) T MCPA	7.797	8.350	493.4E6	181.7E6	43.377	47.179
8) T DICHLORPROP	8.179	8.723	1298.3E6	410.1E6	460.183	425.732
9) T 2,4-D	8.412	9.054	1505.1E6	468.1E6	509.032	493.869
10) T Pentachlo...	8.712	9.585	18769.8E6	6418.2E6	473.635	446.563
11) T 2,4,5-TP ...	9.297	9.960	7667.2E6	2542.2E6	491.901	467.225
12) T 2,4,5-T	9.591	10.381	6915.8E6	2184.1E6	454.744	437.451
13) T 2,4-DB	10.171	10.948	960.3E6	272.7E6	490.014	492.807
14) T DINOSEB	11.391	11.327	4804.6E6	1614.0E6	433.461	449.798
15) T Picloram	11.194	12.429	7523.7E6	2125.2E6	420.482	396.881
16) T DCPA	11.683	12.374	8382.6E6	2797.6E6	426.357	434.407

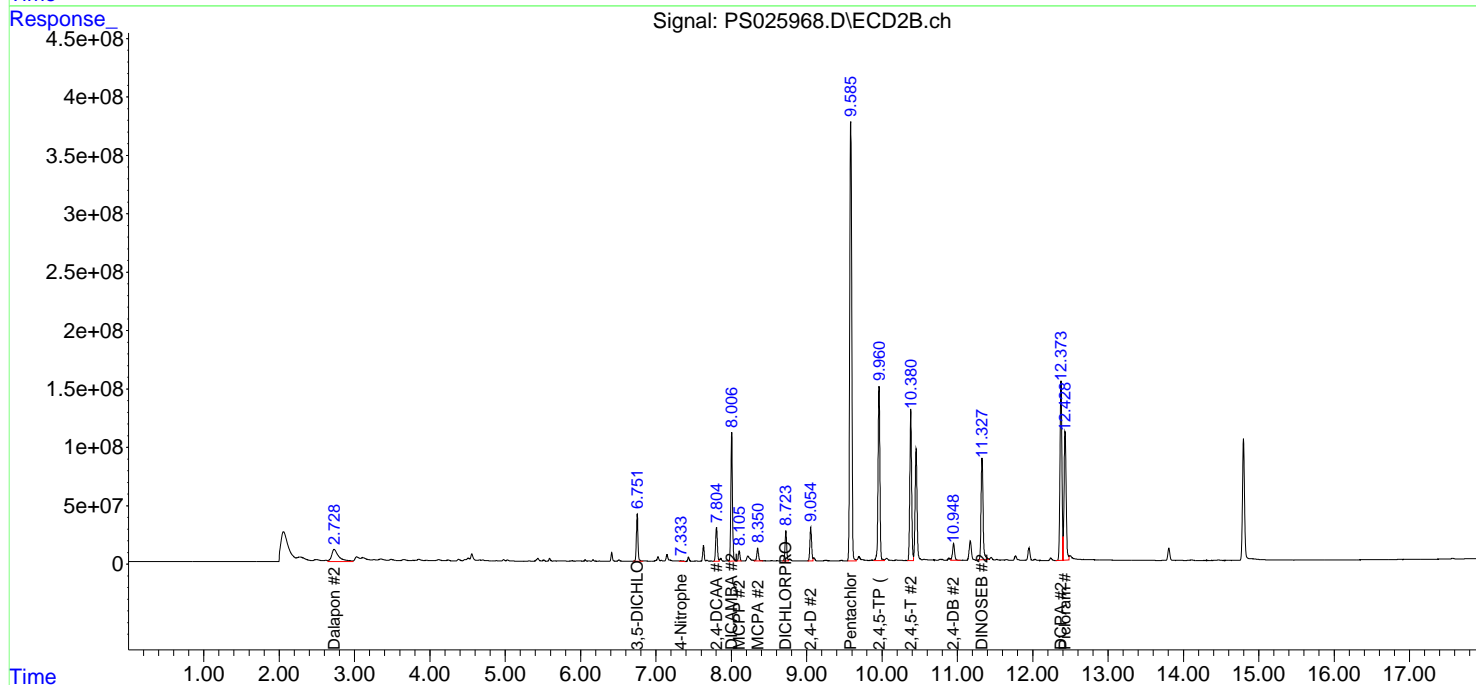
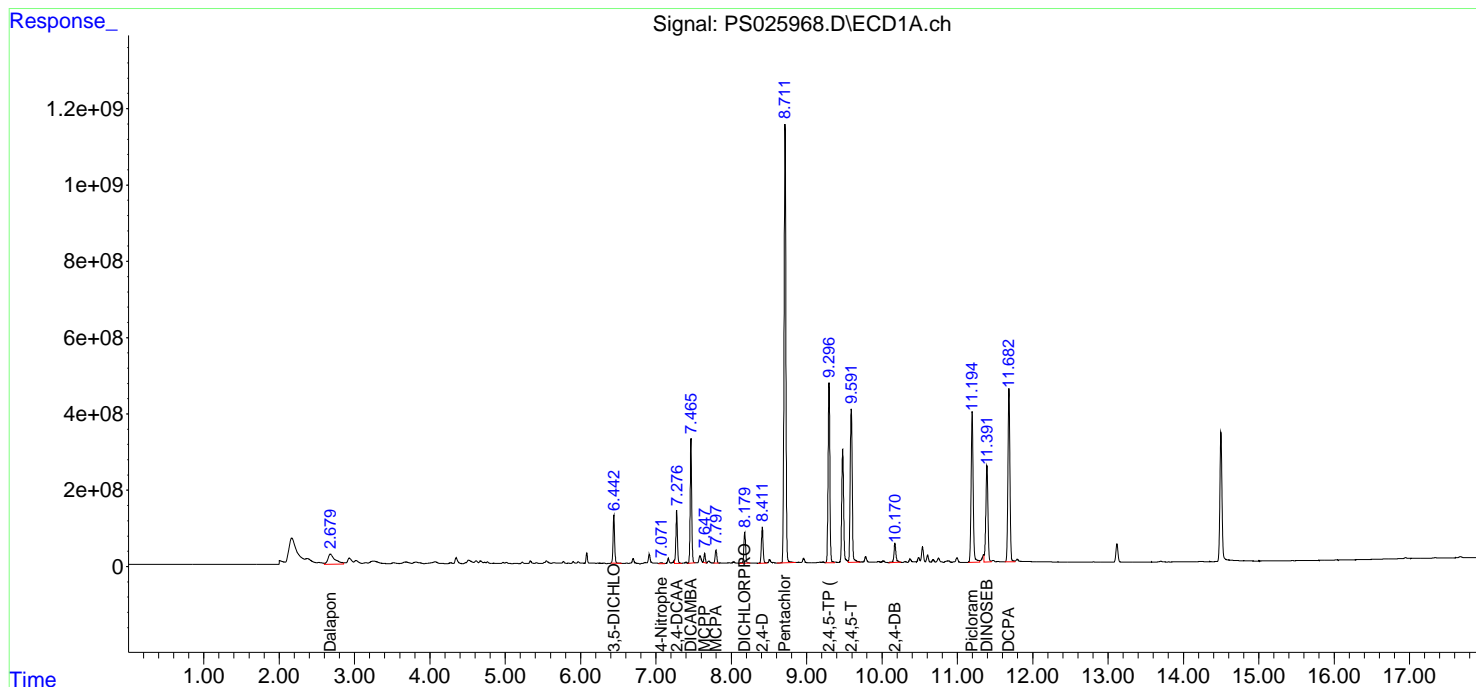
(f)=RT Delta > 1/2 Window (#)=Amounts differ by > 25% (m)=manual int.

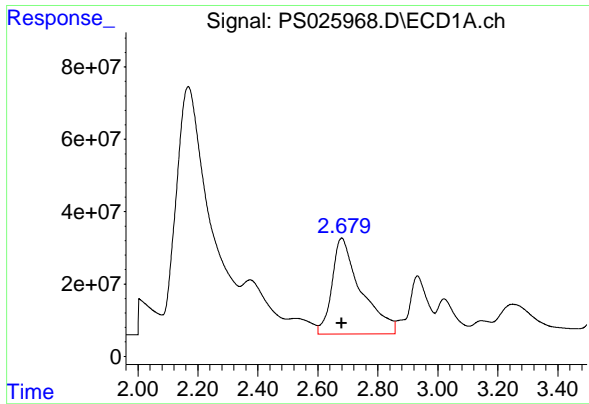
Data Path : Z:\pestpcbsrv\HPCHEM1\ECD_S\Data\PS021424\
 Data File : PS025968.D
 Signal(s) : Signal #1: ECD1A.ch Signal #2: ECD2B.ch
 Acq On : 15 Feb 2024 03:45
 Operator : AR\AJ
 Sample : P1385-02MS
 Misc :
 ALS Vial : 29 Sample Multiplier: 1

Instrument :
 ECD_S
 ClientSampleId :
 C0AA7MS

Integration File signal 1: autoint1.e
 Integration File signal 2: autoint2.e
 Quant Time: Feb 15 05:16:27 2024
 Quant Method : Z:\pestpcbsrv\HPCHEM1\ECD_S\Method\PS021424.M
 Quant Title : 8080.M
 QLast Update : Wed Feb 14 15:17:36 2024
 Response via : Initial Calibration
 Integrator: ChemStation

Volume Inj. : 2 µl
 Signal #1 Phase : Rtx-CLPesticides Signal #2 Phase: Rtx-CLPesticides2
 Signal #1 Info : 30M x 0.32mm x 0.5 Signal #2 Info : 30M x 0.32mm x 0.25µm

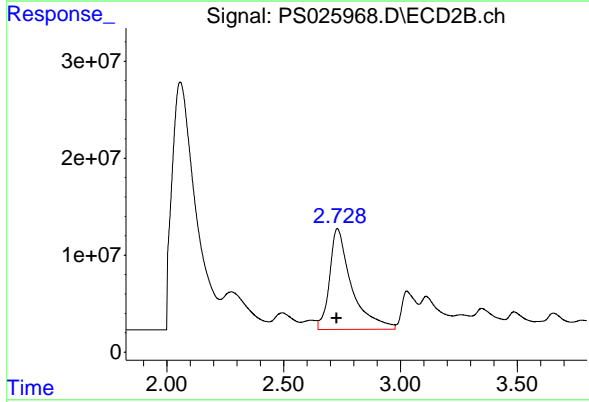




#1 Dalapon

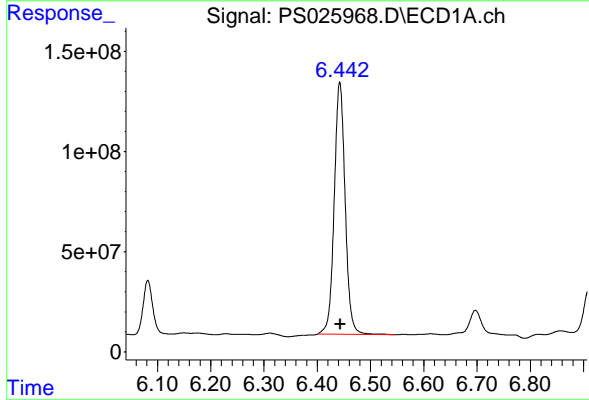
R.T.: 2.680 min
 Delta R.T.: 0.000 min
 Response: 1774840993
 Conc: 396.74 ng/ml

Instrument :
 ECD_S
 ClientSampleId :
 C0AA7MS



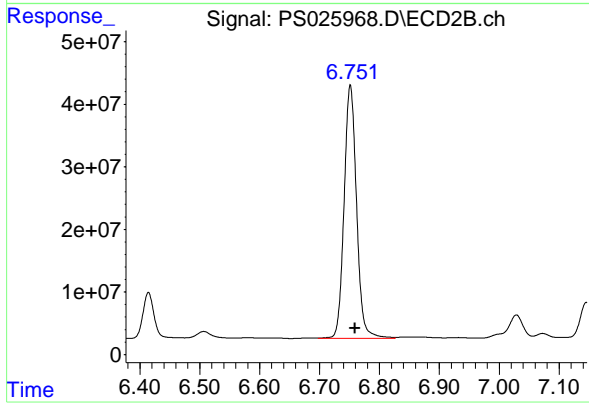
#1 Dalapon

R.T.: 2.729 min
 Delta R.T.: 0.002 min
 Response: 681306998
 Conc: 417.82 ng/ml



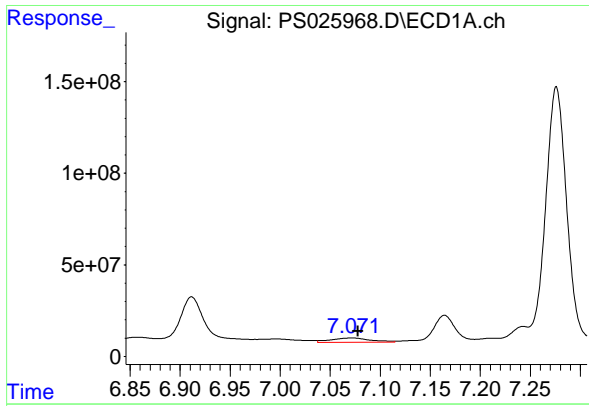
#2 3,5-DICHLOROBENZOIC ACID

R.T.: 6.442 min
 Delta R.T.: -0.001 min
 Response: 1795474485
 Conc: 462.49 ng/ml



#2 3,5-DICHLOROBENZOIC ACID

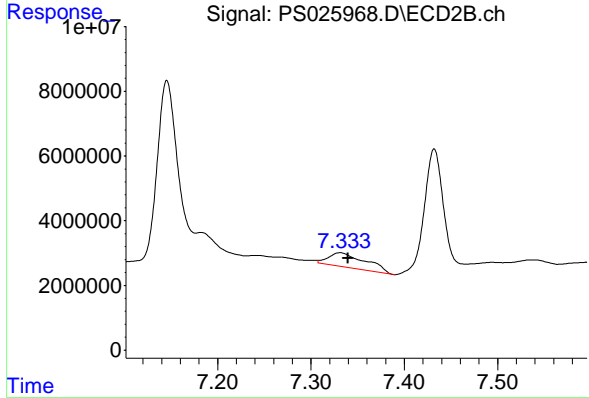
R.T.: 6.751 min
 Delta R.T.: -0.007 min
 Response: 585844761
 Conc: 438.31 ng/ml



#3 4-Nitrophenol

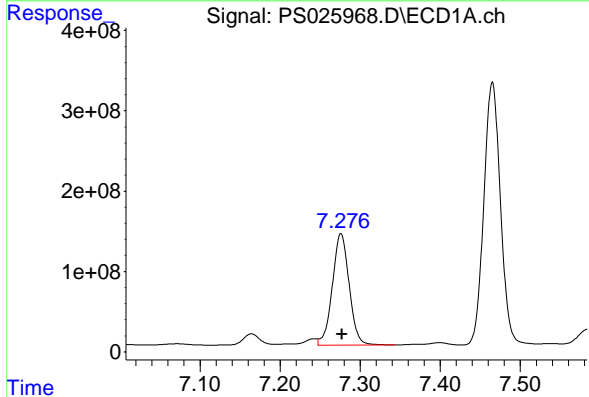
R.T.: 7.072 min
 Delta R.T.: -0.006 min
 Response: 64668336
 Conc: 40.79 ng/ml

Instrument :
 ECD_S
 ClientSampleId :
 C0AA7MS



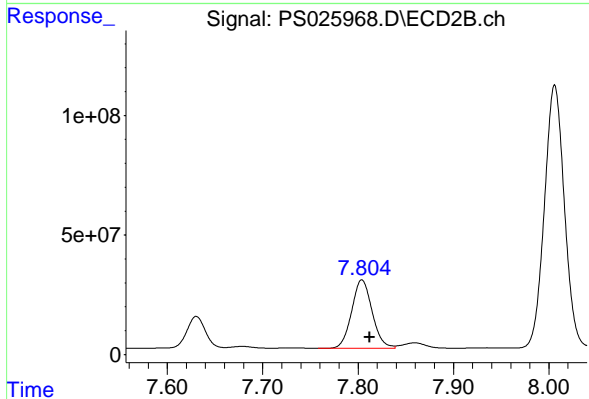
#3 4-Nitrophenol

R.T.: 7.331 min
 Delta R.T.: -0.008 min
 Response: 12061935
 Conc: 25.02 ng/ml



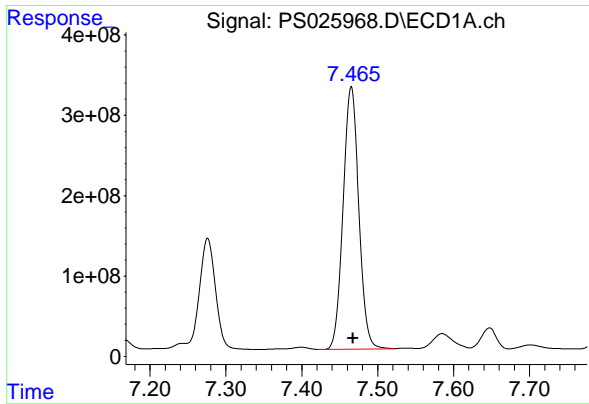
#4 2,4-DCAA

R.T.: 7.276 min
 Delta R.T.: -0.001 min
 Response: 2028174340
 Conc: 766.34 ng/ml



#4 2,4-DCAA

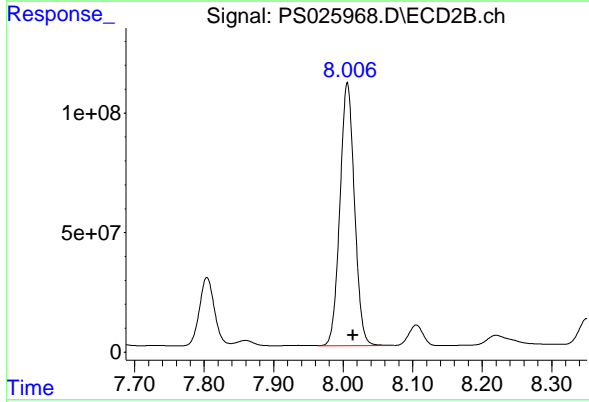
R.T.: 7.804 min
 Delta R.T.: -0.008 min
 Response: 427510480
 Conc: 489.79 ng/ml



#5 DICAMBA

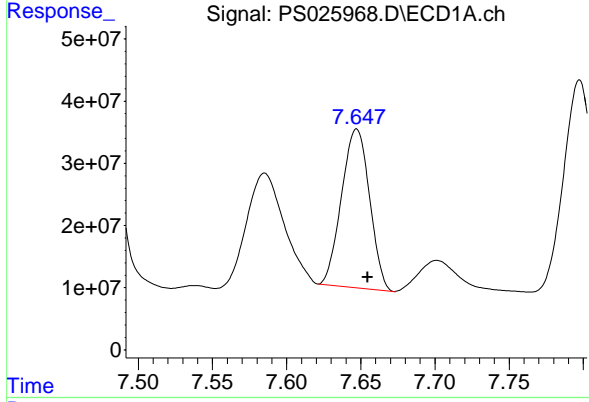
R.T.: 7.465 min
 Delta R.T.: -0.002 min
 Response: 4684524644
 Conc: 425.15 ng/ml

Instrument :
 ECD_S
 ClientSampleId :
 C0AA7MS



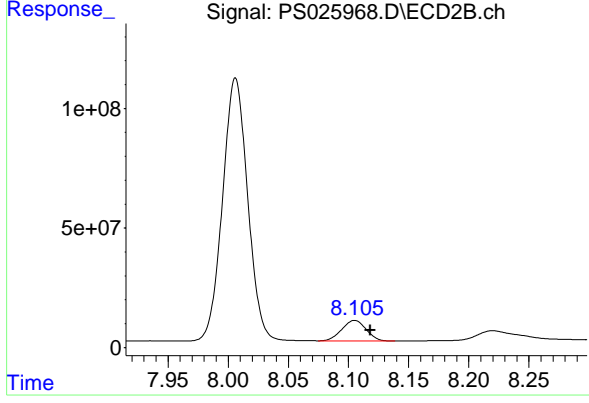
#5 DICAMBA

R.T.: 8.006 min
 Delta R.T.: -0.008 min
 Response: 1602805007
 Conc: 414.81 ng/ml



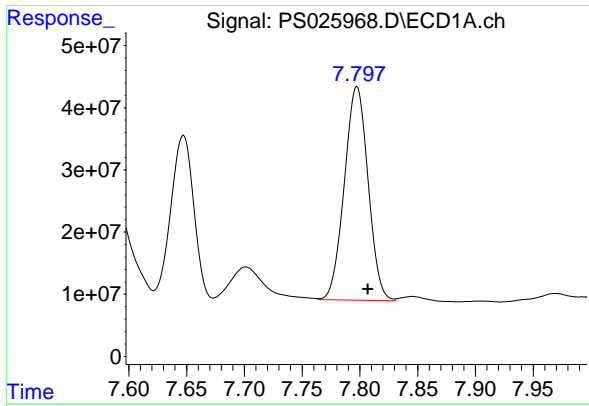
#6 MCPP

R.T.: 7.647 min
 Delta R.T.: -0.007 min
 Response: 335640510
 Conc: 42.47 ug/ml



#6 MCPP

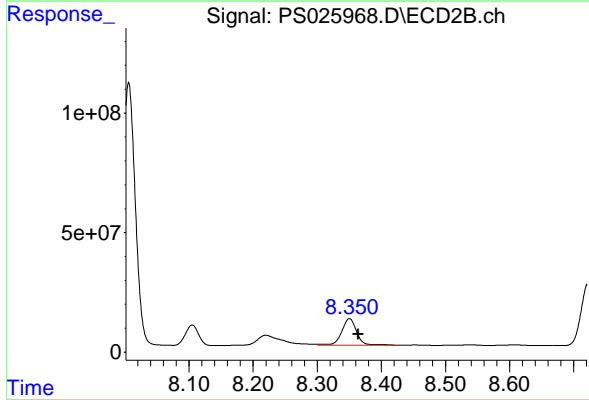
R.T.: 8.105 min
 Delta R.T.: -0.013 min
 Response: 122414110
 Conc: 45.38 ug/ml



#7 MCPA

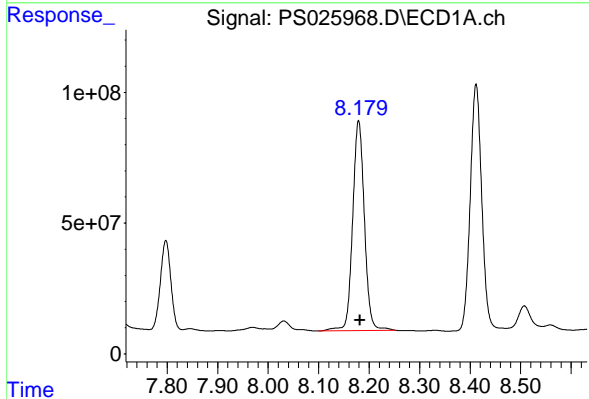
R.T.: 7.797 min
 Delta R.T.: -0.010 min
 Response: 493381548
 Conc: 43.38 ug/ml

Instrument :
 ECD_S
 ClientSampleId :
 C0AA7MS



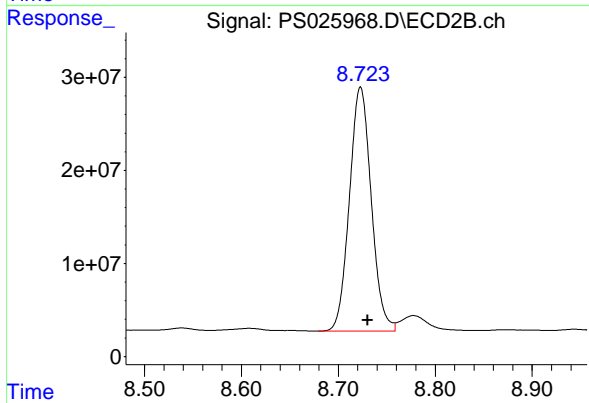
#7 MCPA

R.T.: 8.350 min
 Delta R.T.: -0.014 min
 Response: 181745222
 Conc: 47.18 ug/ml



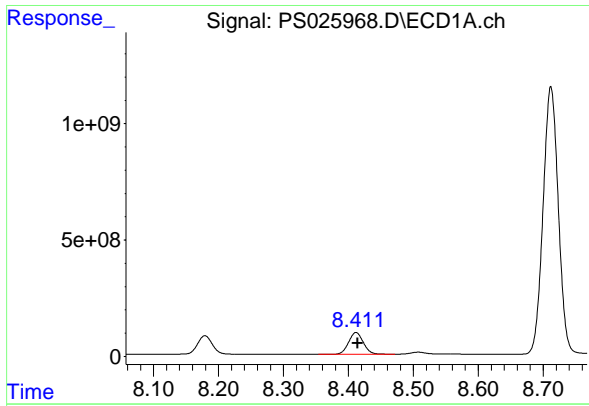
#8 DICHLORPROP

R.T.: 8.179 min
 Delta R.T.: -0.003 min
 Response: 1298253477
 Conc: 460.18 ng/ml



#8 DICHLORPROP

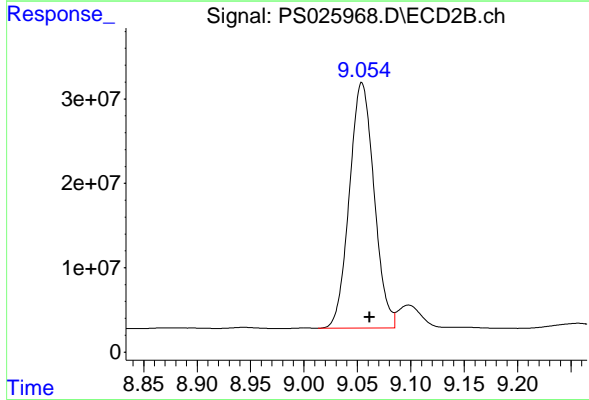
R.T.: 8.723 min
 Delta R.T.: -0.007 min
 Response: 410094714
 Conc: 425.73 ng/ml



#9 2,4-D

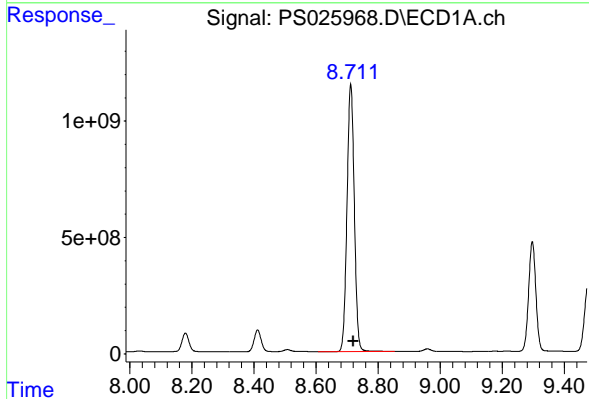
R.T.: 8.412 min
 Delta R.T.: -0.002 min
 Response: 1505090938
 Conc: 509.03 ng/ml

Instrument :
 ECD_S
 ClientSampleId :
 C0AA7MS



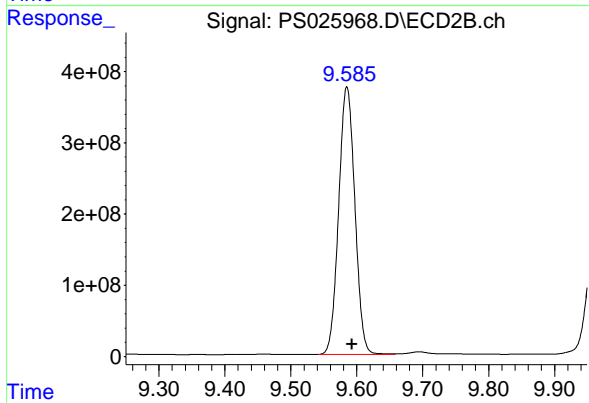
#9 2,4-D

R.T.: 9.054 min
 Delta R.T.: -0.007 min
 Response: 468089777
 Conc: 493.87 ng/ml



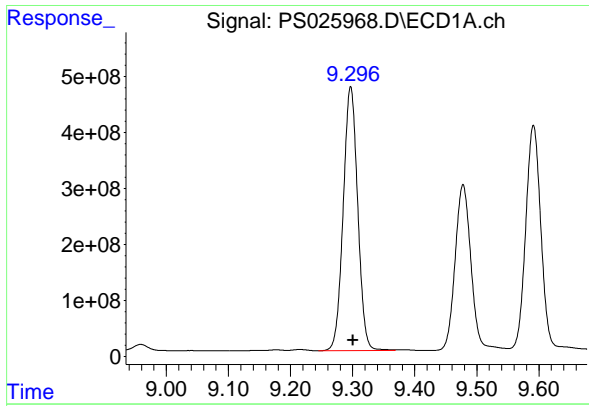
#10 Pentachlorophenol

R.T.: 8.712 min
 Delta R.T.: -0.009 min
 Response: 18769774604
 Conc: 473.63 ng/ml



#10 Pentachlorophenol

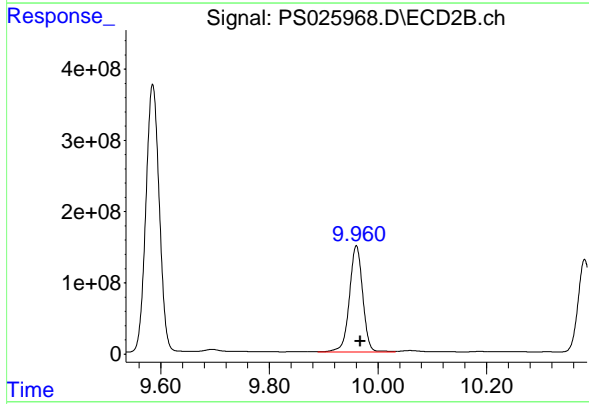
R.T.: 9.585 min
 Delta R.T.: -0.008 min
 Response: 6418181607
 Conc: 446.56 ng/ml



#11 2,4,5-TP (SILVEX)

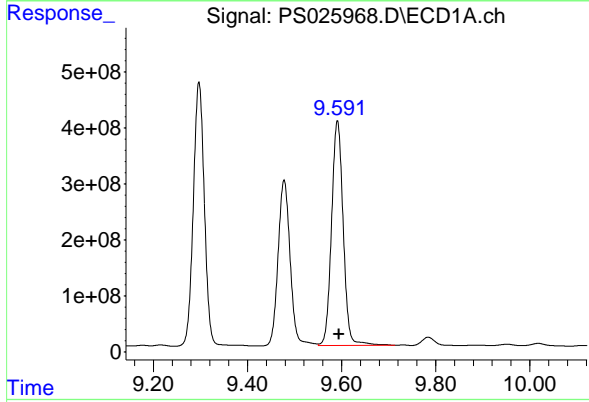
R.T.: 9.297 min
 Delta R.T.: -0.004 min
 Response: 7667153266
 Conc: 491.90 ng/ml

Instrument :
 ECD_S
 ClientSampleId :
 C0AA7MS



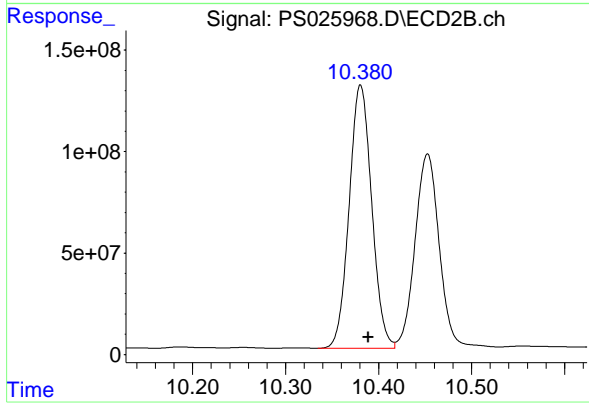
#11 2,4,5-TP (SILVEX)

R.T.: 9.960 min
 Delta R.T.: -0.007 min
 Response: 2542220546
 Conc: 467.23 ng/ml



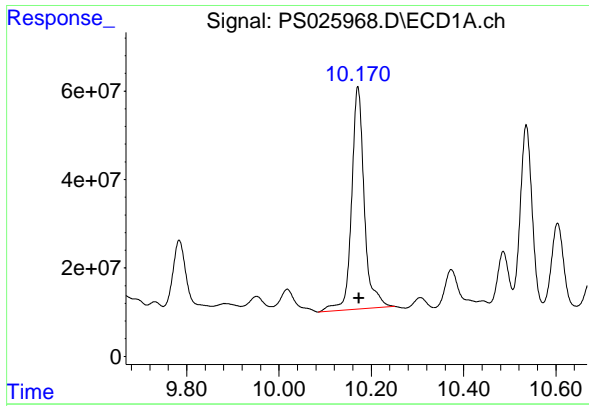
#12 2,4,5-T

R.T.: 9.591 min
 Delta R.T.: -0.003 min
 Response: 6915793421
 Conc: 454.74 ng/ml



#12 2,4,5-T

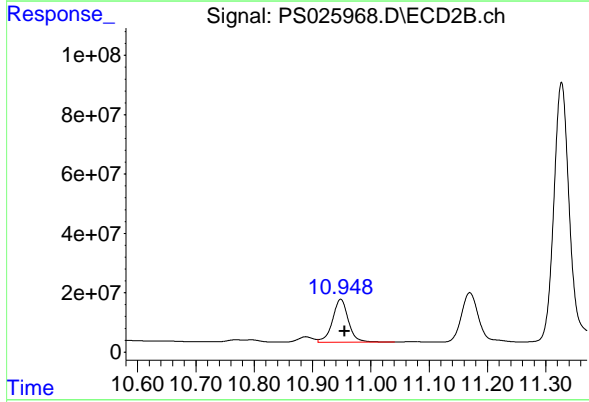
R.T.: 10.381 min
 Delta R.T.: -0.008 min
 Response: 2184146282
 Conc: 437.45 ng/ml



#13 2,4-DB

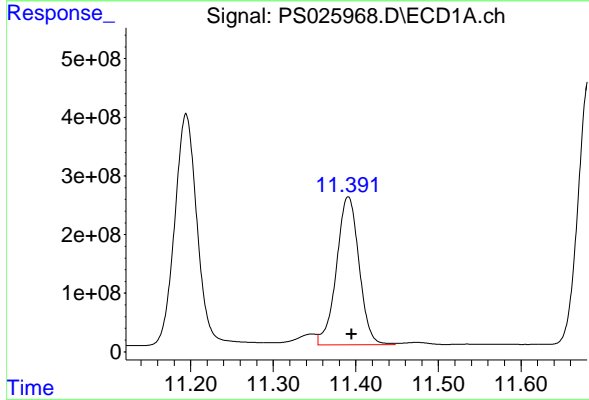
R.T.: 10.171 min
 Delta R.T.: -0.003 min
 Response: 960262512
 Conc: 490.01 ng/ml

Instrument :
 ECD_S
 ClientSampleId :
 C0AA7MS



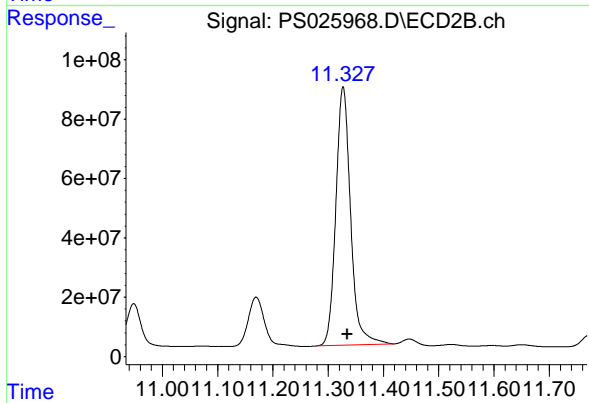
#13 2,4-DB

R.T.: 10.948 min
 Delta R.T.: -0.007 min
 Response: 272714702
 Conc: 492.81 ng/ml



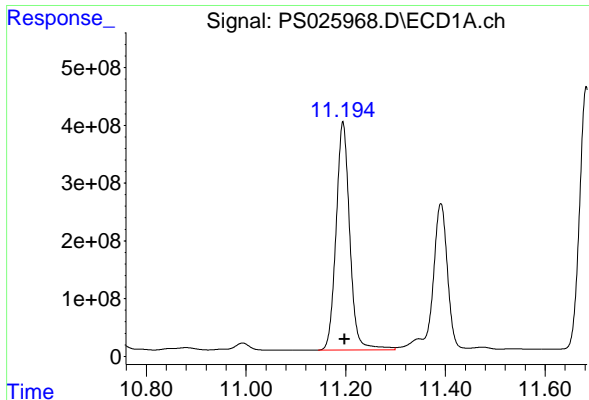
#14 DINOSEB

R.T.: 11.391 min
 Delta R.T.: -0.004 min
 Response: 4804592762
 Conc: 433.46 ng/ml



#14 DINOSEB

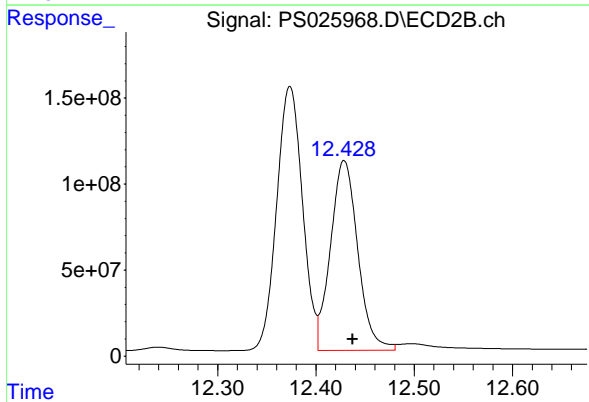
R.T.: 11.327 min
 Delta R.T.: -0.007 min
 Response: 1614006272
 Conc: 449.80 ng/ml



#15 Picloram

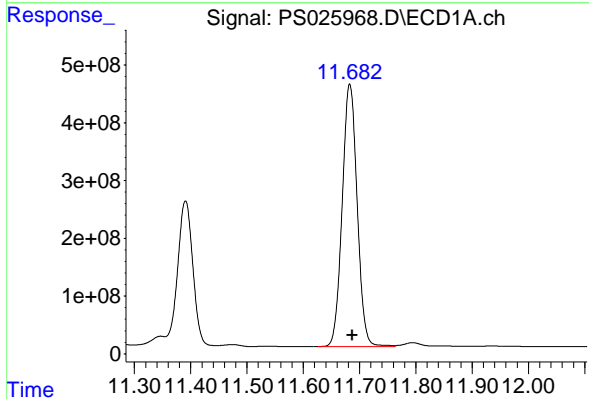
R.T.: 11.194 min
 Delta R.T.: -0.004 min
 Response: 7523655541
 Conc: 420.48 ng/ml

Instrument :
 ECD_S
 ClientSampleId :
 C0AA7MS



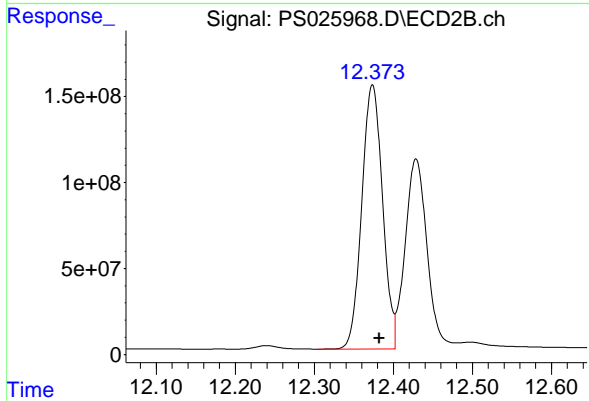
#15 Picloram

R.T.: 12.429 min
 Delta R.T.: -0.009 min
 Response: 2125164814
 Conc: 396.88 ng/ml



#16 DCPA

R.T.: 11.683 min
 Delta R.T.: -0.005 min
 Response: 8382579101
 Conc: 426.36 ng/ml



#16 DCPA

R.T.: 12.374 min
 Delta R.T.: -0.009 min
 Response: 2797577076
 Conc: 434.41 ng/ml