

Data Path : Z:\pestpcbsrv\HPCHEM1\ECD_S\Data\PS021522\
 Data File : PS018338.D
 Signal(s) : Signal #1: ECD1A.ch Signal #2: ECD2B.ch
 Acq On : 15 Feb 2022 11:54
 Operator : AJ\MA
 Sample : HSTDCCC750
 Misc :
 ALS Vial : 3 Sample Multiplier: 1

Instrument :
 ECD_S
 ClientSampleId :

Integration File signal 1: autoint1.e
 Integration File signal 2: autoint2.e
 Quant Time: Feb 15 23:51:16 2022
 Quant Method : Z:\pestpcbsrv\HPCHEM1\ECD_S\Method\PS020822.M
 Quant Title : 8080.M
 QLast Update : Wed Feb 09 15:57:26 2022
 Response via : Initial Calibration
 Integrator: ChemStation

Volume Inj. : 2 µl
 Signal #1 Phase : Rtx-CLPesticides Signal #2 Phase: Rtx-CLPesticides2
 Signal #1 Info : 30M x 0.32mm x0.5 Signal #2 Info : 30M x 0.32mm x 0.25µm

	Compound	RT#1	RT#2	Resp#1	Resp#2	ng/ml	ng/ml

System Monitoring Compounds							
4) S	2,4-DCAA	7.028	6.639	1131.9E6	460.4E6	719.542	733.960
Target Compounds							
1) T	Dalapon	2.889	2.404	1614.3E6	507.1E6	642.544	632.800
2) T	3,5-DICHL...	6.272	5.857	1526.7E6	655.0E6	682.453	690.217
3) T	4-Nitroph...	6.863	6.280	537.6E6	270.7E6	609.275	668.410
5) T	DICAMBA	7.211	6.790	4502.9E6	1939.5E6	712.845	714.993
6) T	MCP P	7.379	6.884	335.6E6	155.6E6	72.930	71.740
7) T	MCPA	7.525	7.093	466.5E6	218.0E6	71.612	70.638
8) T	DICHLORPROP	7.896	7.401	1106.3E6	487.3E6	701.110	703.200
9) T	2,4-D	8.127	7.693	1254.3E6	571.4E6	681.180	689.324
10) T	Pentachlo...	8.418	8.099	15259.4E6	6167.5E6	722.098	714.476
11) T	2,4,5-TP ...	8.968	8.463	6133.9E6	2679.7E6	717.930	723.424
12) T	2,4,5-T	9.253	8.839	6482.7E6	2516.8E6	732.551	710.825
13) T	2,4-DB	9.803	9.341	1149.8E6	343.2E6	653.302	720.902
14) T	DINOSEB	10.939	9.659	4858.5E6	1814.9E6	727.599	719.159
15) T	Picloram	10.775	10.644	7430.0E6	3434.7E6	650.333	685.312
16) T	DCPA	11.206	10.583	7868.1E6	3297.3E6	713.828	724.517

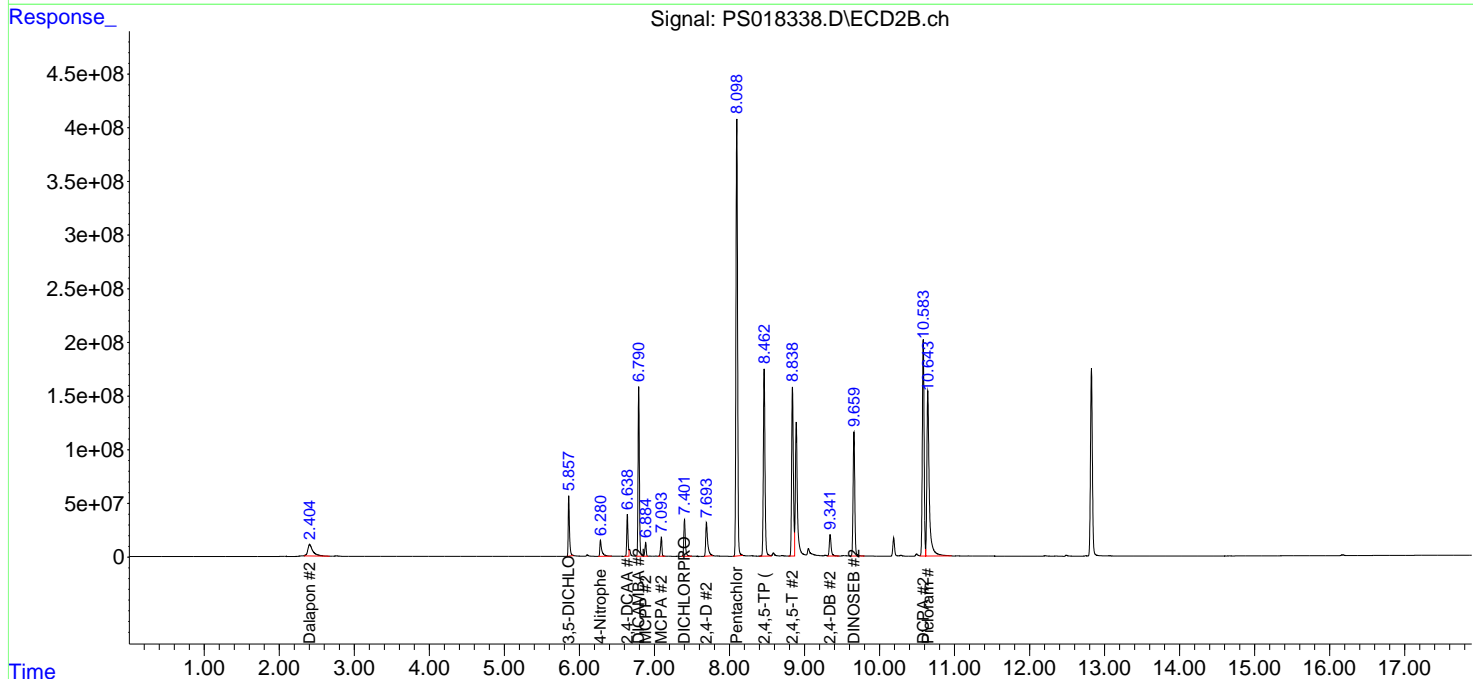
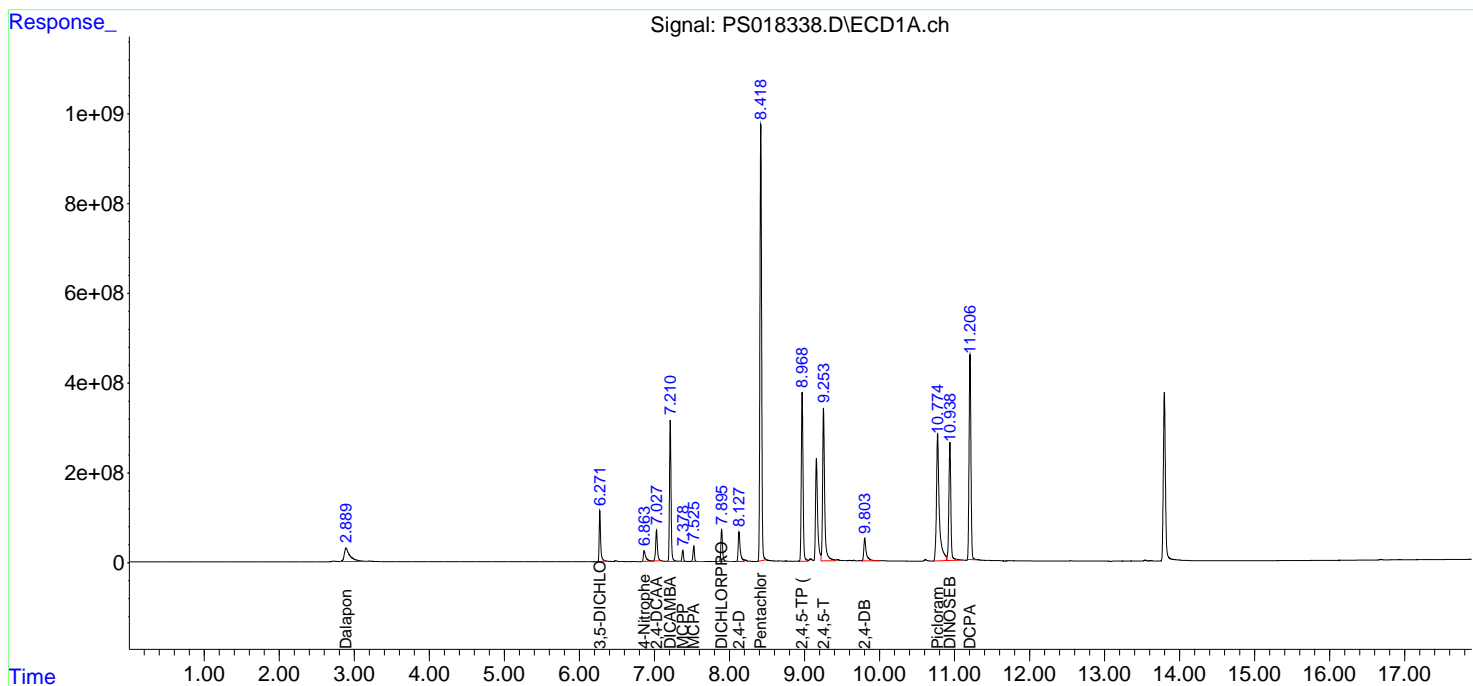
(f)=RT Delta > 1/2 Window (#)=Amounts differ by > 25% (m)=manual int.

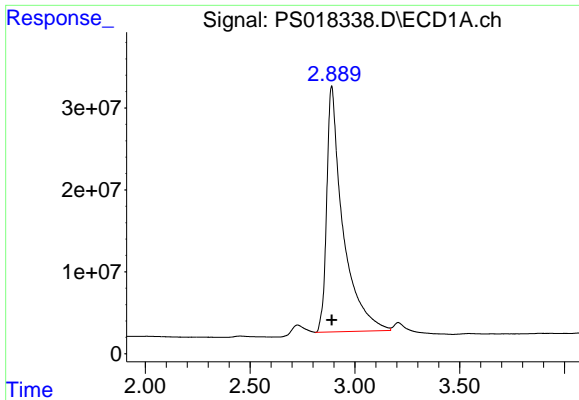
Data Path : Z:\pestpcbsrv\HPCHEM1\ECD_S\Data\PS021522\
 Data File : PS018338.D
 Signal(s) : Signal #1: ECD1A.ch Signal #2: ECD2B.ch
 Acq On : 15 Feb 2022 11:54
 Operator : AJ\MA
 Sample : HSTDCCC750
 Misc :
 ALS Vial : 3 Sample Multiplier: 1

Instrument :
 ECD_S
 ClientSampleId :

Integration File signal 1: autoint1.e
 Integration File signal 2: autoint2.e
 Quant Time: Feb 15 23:51:16 2022
 Quant Method : Z:\pestpcbsrv\HPCHEM1\ECD_S\Method\PS020822.M
 Quant Title : 8080.M
 QLast Update : Wed Feb 09 15:57:26 2022
 Response via : Initial Calibration
 Integrator: ChemStation

Volume Inj. : 2 µl
 Signal #1 Phase : Rtx-CLPesticides Signal #2 Phase: Rtx-CLPesticides2
 Signal #1 Info : 30M x 0.32mm x0.5 Signal #2 Info : 30M x 0.32mm x 0.25µm

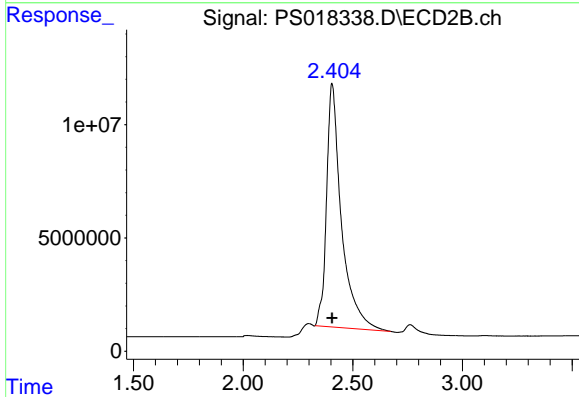




#1 Dalapon

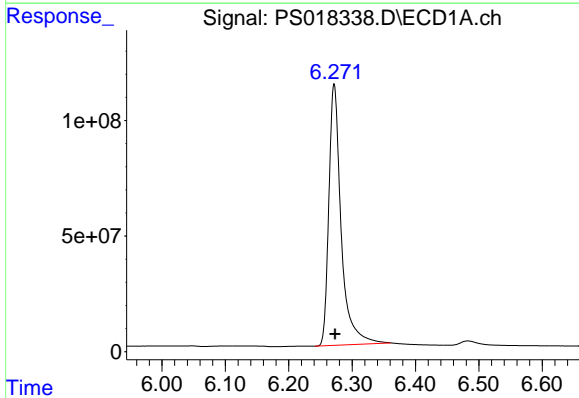
R.T.: 2.889 min
Delta R.T.: 0.000 min
Response: 1614296948
Conc: 642.54 ng/ml

Instrument :
ECD_S
ClientSampleId :



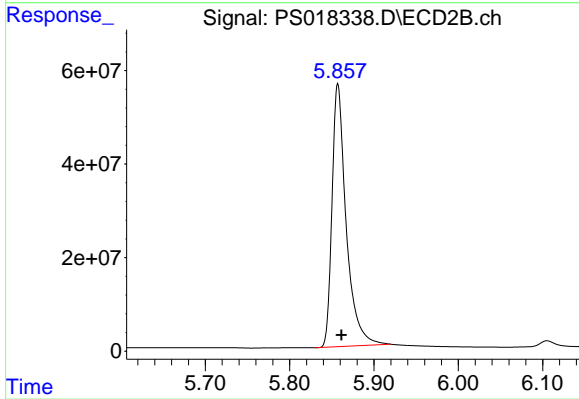
#1 Dalapon

R.T.: 2.404 min
Delta R.T.: 0.000 min
Response: 507144434
Conc: 632.80 ng/ml



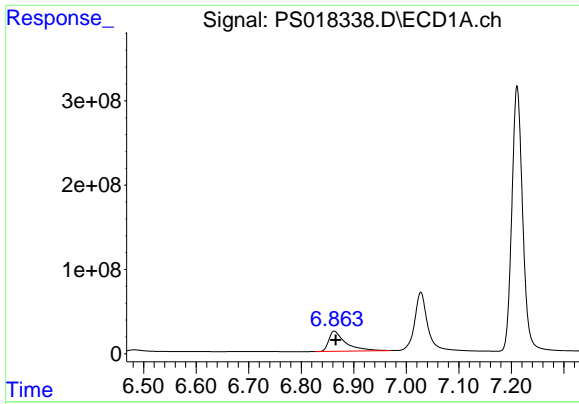
#2 3,5-DICHLOROBENZOIC ACID

R.T.: 6.272 min
Delta R.T.: -0.002 min
Response: 1526669347
Conc: 682.45 ng/ml



#2 3,5-DICHLOROBENZOIC ACID

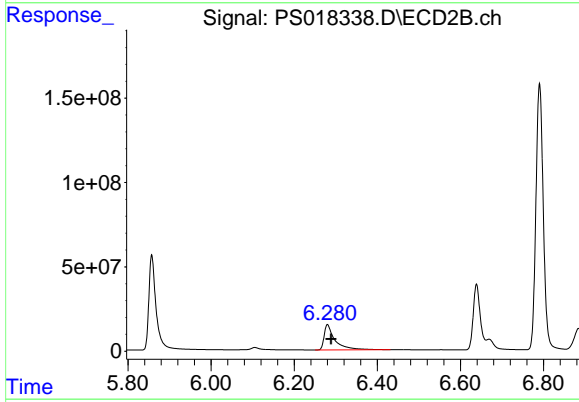
R.T.: 5.857 min
Delta R.T.: -0.004 min
Response: 655024281
Conc: 690.22 ng/ml



#3 4-Nitrophenol

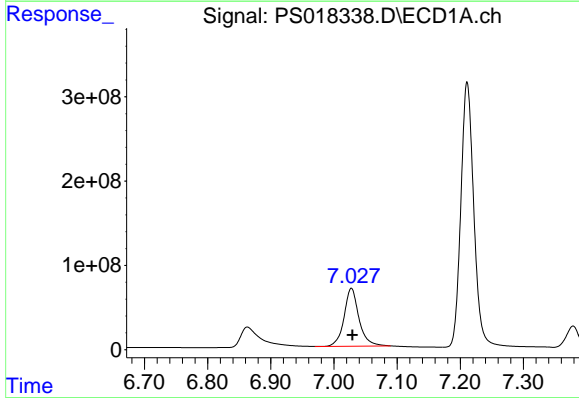
R.T.: 6.863 min
Delta R.T.: -0.002 min
Response: 537598426
Conc: 609.28 ng/ml

Instrument :
ECD_S
ClientSampleId :



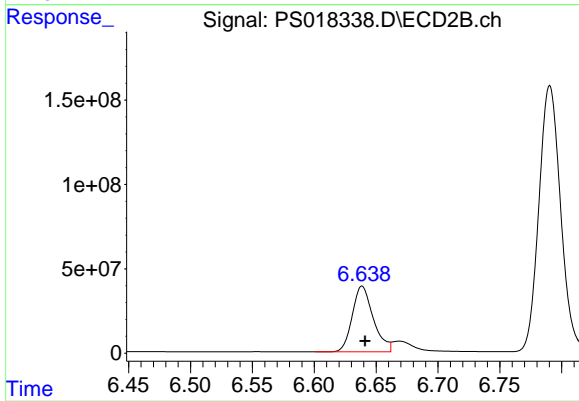
#3 4-Nitrophenol

R.T.: 6.280 min
Delta R.T.: -0.008 min
Response: 270706735
Conc: 668.41 ng/ml



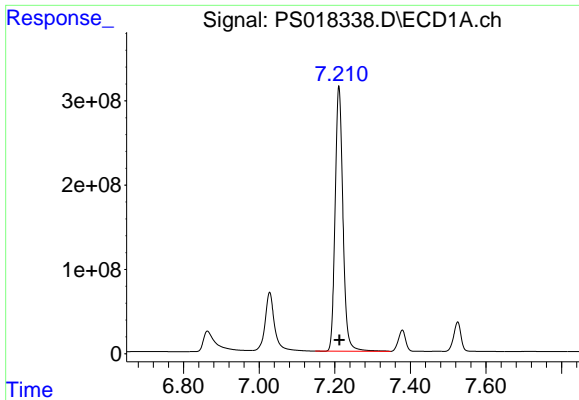
#4 2,4-DCAA

R.T.: 7.028 min
Delta R.T.: -0.002 min
Response: 1131892625
Conc: 719.54 ng/ml



#4 2,4-DCAA

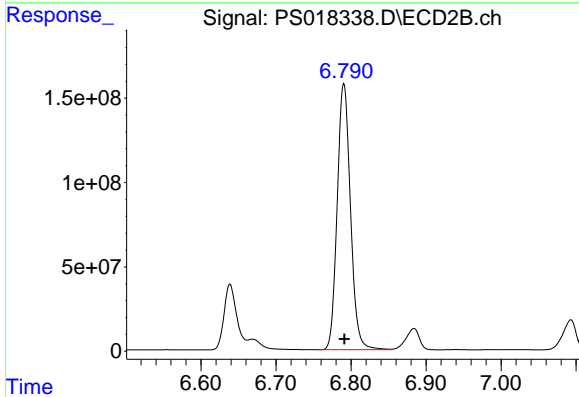
R.T.: 6.639 min
Delta R.T.: -0.002 min
Response: 460362268
Conc: 733.96 ng/ml



#5 DICAMBA

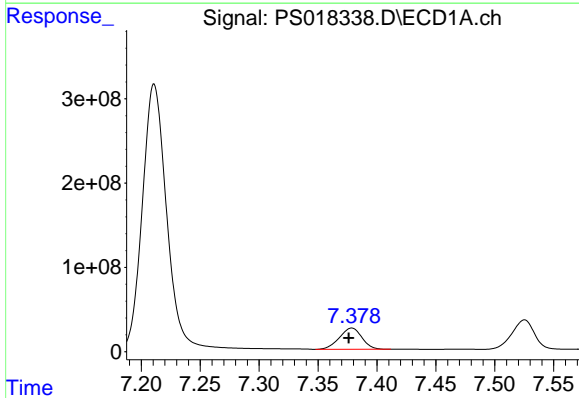
R.T.: 7.211 min
 Delta R.T.: -0.001 min
 Response: 4502882445
 Conc: 712.85 ng/ml

Instrument :
 ECD_S
 ClientSampleId :



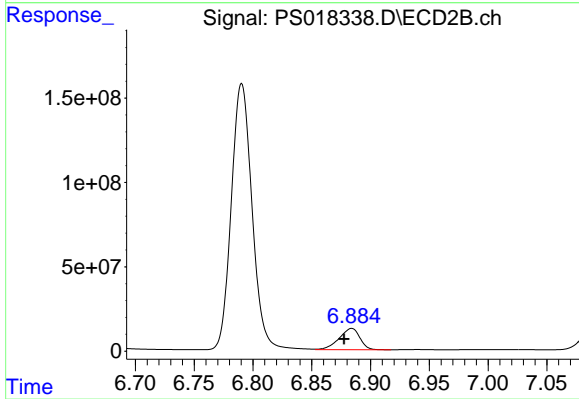
#5 DICAMBA

R.T.: 6.790 min
 Delta R.T.: 0.000 min
 Response: 1939539519
 Conc: 714.99 ng/ml



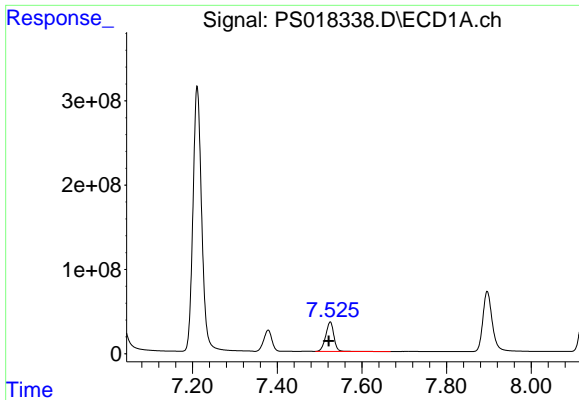
#6 MCP

R.T.: 7.379 min
 Delta R.T.: 0.003 min
 Response: 335637506
 Conc: 72.93 ug/ml



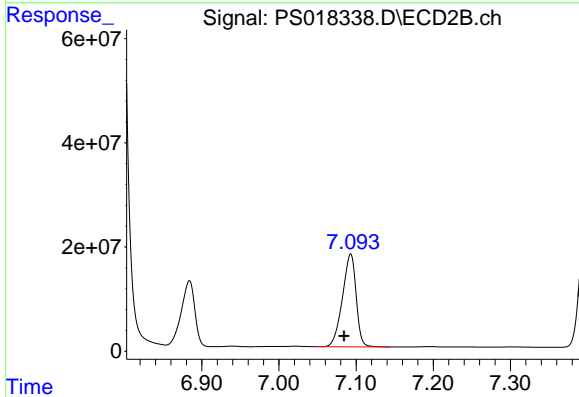
#6 MCP

R.T.: 6.884 min
 Delta R.T.: 0.006 min
 Response: 155564366
 Conc: 71.74 ug/ml

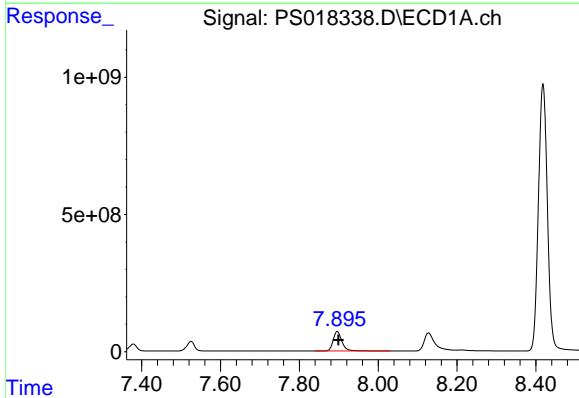


#7 MCPA
 R.T.: 7.525 min
 Delta R.T.: 0.004 min
 Response: 466549973
 Conc: 71.61 ug/ml

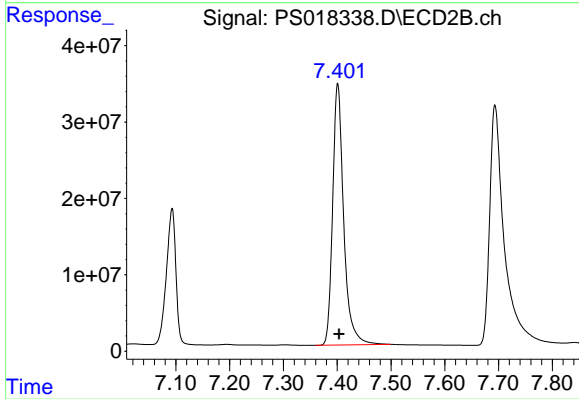
Instrument :
 ECD_S
 ClientSampleId :



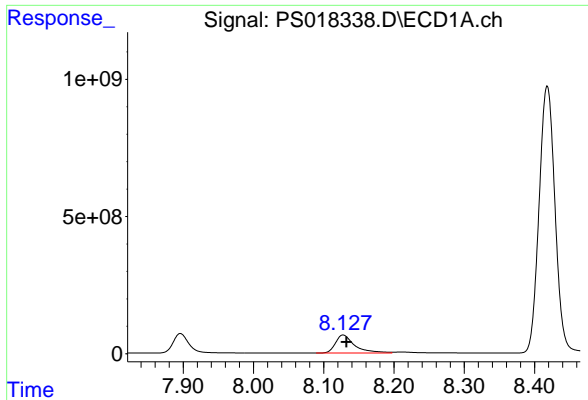
#7 MCPA
 R.T.: 7.093 min
 Delta R.T.: 0.008 min
 Response: 218019706
 Conc: 70.64 ug/ml



#8 DICHLORPROP
 R.T.: 7.896 min
 Delta R.T.: -0.003 min
 Response: 1106272118
 Conc: 701.11 ng/ml



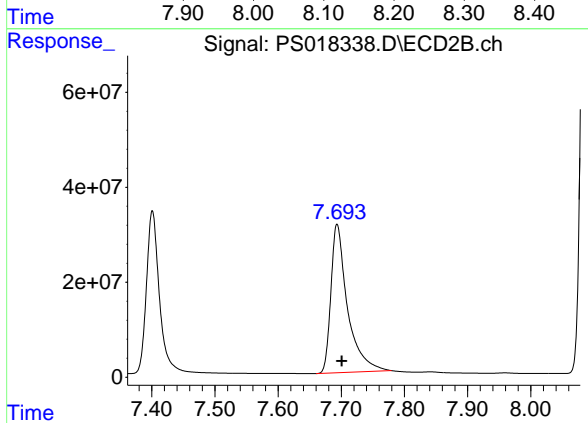
#8 DICHLORPROP
 R.T.: 7.401 min
 Delta R.T.: -0.003 min
 Response: 487342426
 Conc: 703.20 ng/ml



#9 2,4-D

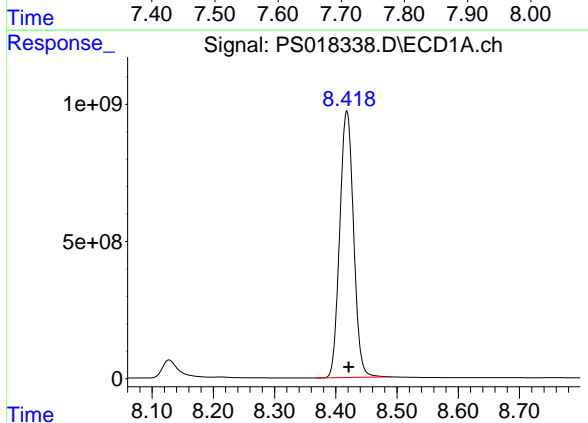
R.T.: 8.127 min
 Delta R.T.: -0.005 min
 Response: 1254265882
 Conc: 681.18 ng/ml

Instrument :
 ECD_S
 ClientSampleId :



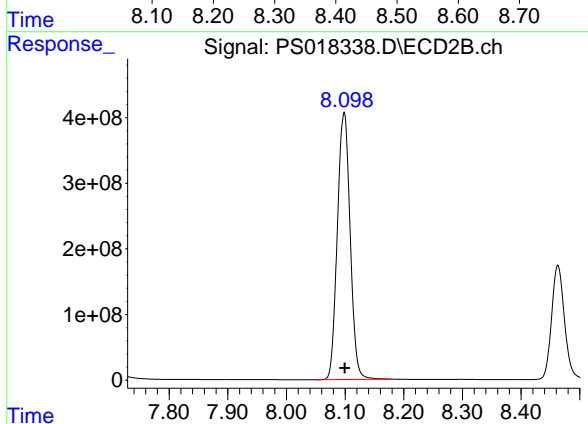
#9 2,4-D

R.T.: 7.693 min
 Delta R.T.: -0.007 min
 Response: 571381316
 Conc: 689.32 ng/ml



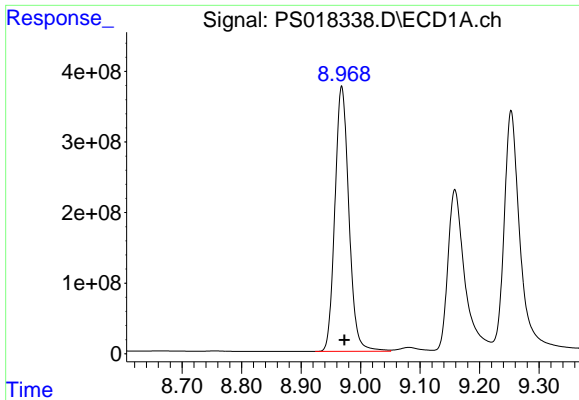
#10 Pentachlorophenol

R.T.: 8.418 min
 Delta R.T.: -0.003 min
 Response: 15259407847
 Conc: 722.10 ng/ml



#10 Pentachlorophenol

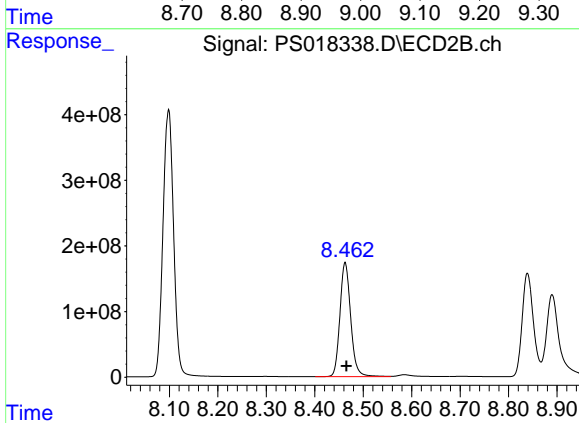
R.T.: 8.099 min
 Delta R.T.: 0.000 min
 Response: 6167517598
 Conc: 714.48 ng/ml



#11 2,4,5-TP (SILVEX)

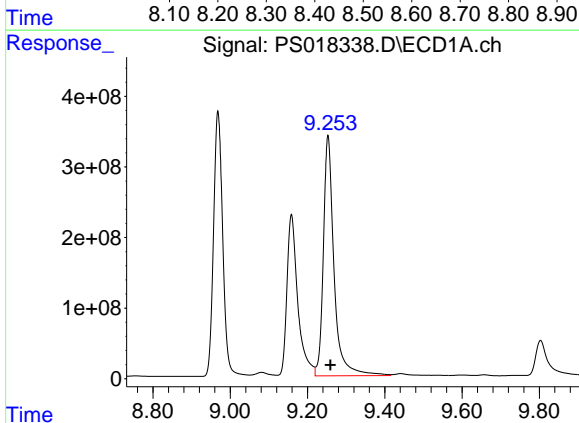
R.T.: 8.968 min
 Delta R.T.: -0.004 min
 Response: 6133865730
 Conc: 717.93 ng/ml

Instrument :
 ECD_S
 ClientSampleId :



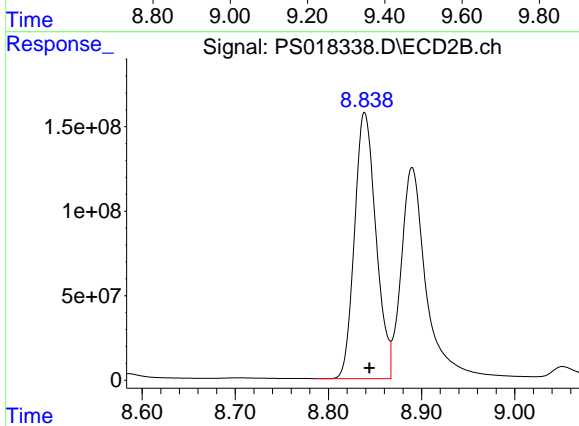
#11 2,4,5-TP (SILVEX)

R.T.: 8.463 min
 Delta R.T.: -0.003 min
 Response: 2679686275
 Conc: 723.42 ng/ml



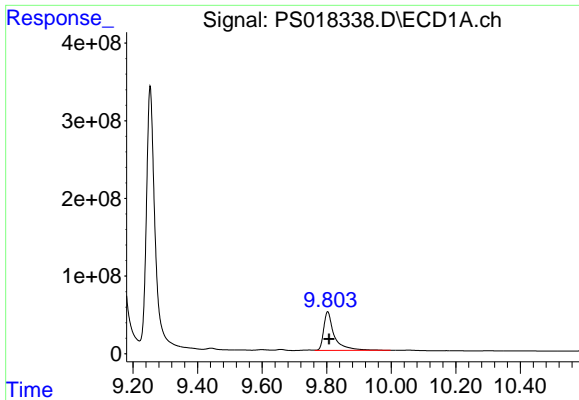
#12 2,4,5-T

R.T.: 9.253 min
 Delta R.T.: -0.006 min
 Response: 6482703643
 Conc: 732.55 ng/ml



#12 2,4,5-T

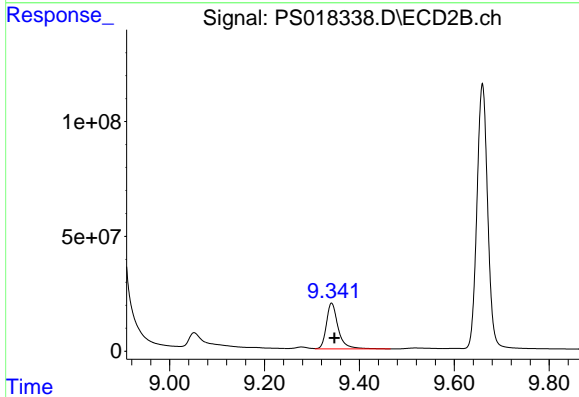
R.T.: 8.839 min
 Delta R.T.: -0.005 min
 Response: 2516825398
 Conc: 710.82 ng/ml



#13 2,4-DB

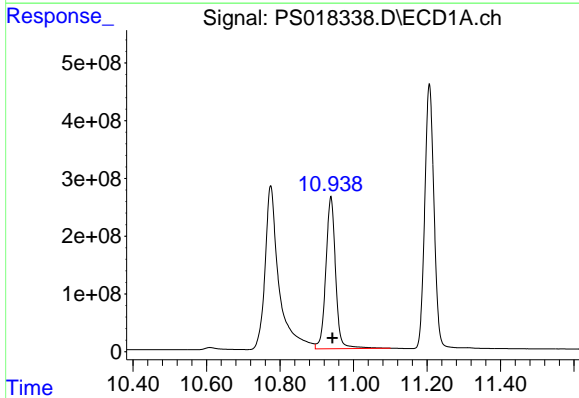
R.T.: 9.803 min
 Delta R.T.: -0.004 min
 Response: 1149803333
 Conc: 653.30 ng/ml

Instrument :
 ECD_S
 ClientSampleId :



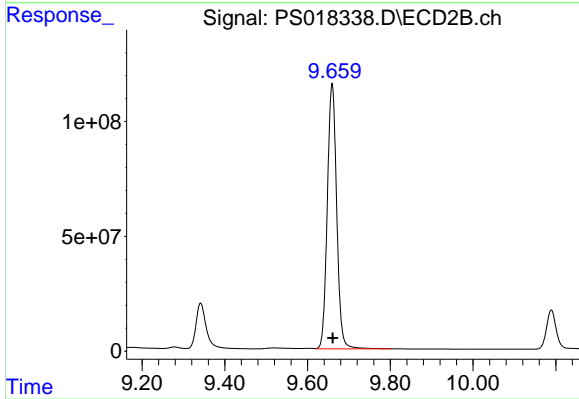
#13 2,4-DB

R.T.: 9.341 min
 Delta R.T.: -0.006 min
 Response: 343194231
 Conc: 720.90 ng/ml



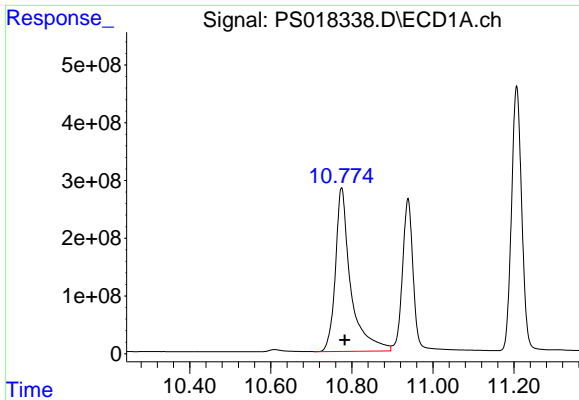
#14 DINOSEB

R.T.: 10.939 min
 Delta R.T.: -0.004 min
 Response: 4858474181
 Conc: 727.60 ng/ml



#14 DINOSEB

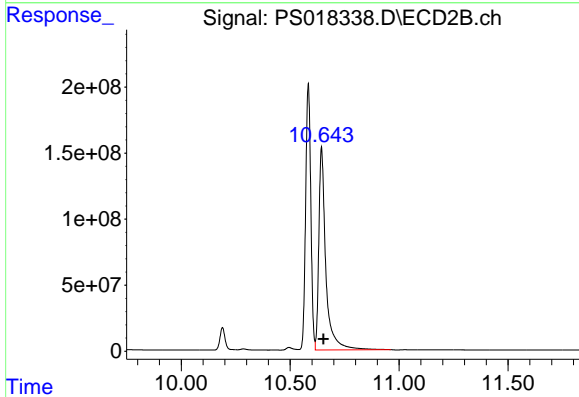
R.T.: 9.659 min
 Delta R.T.: -0.002 min
 Response: 1814894976
 Conc: 719.16 ng/ml



#15 Picloram

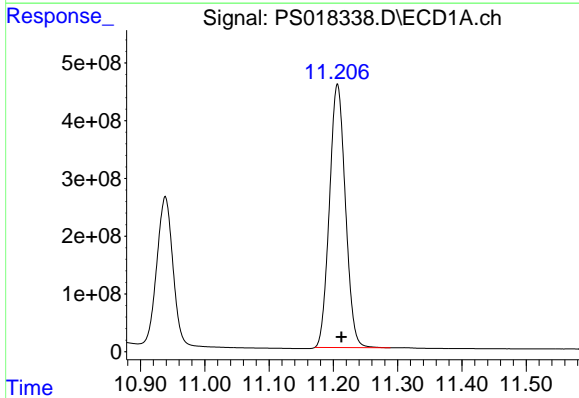
R.T.: 10.775 min
 Delta R.T.: -0.008 min
 Response: 7429976317
 Conc: 650.33 ng/ml

Instrument :
 ECD_S
 ClientSampleId :



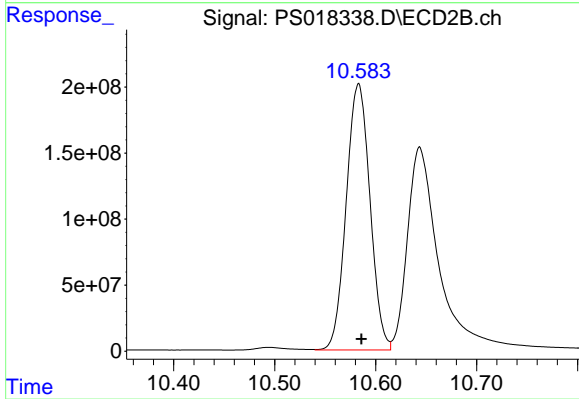
#15 Picloram

R.T.: 10.644 min
 Delta R.T.: -0.009 min
 Response: 3434721338
 Conc: 685.31 ng/ml



#16 DCPA

R.T.: 11.206 min
 Delta R.T.: -0.006 min
 Response: 7868068416
 Conc: 713.83 ng/ml



#16 DCPA

R.T.: 10.583 min
 Delta R.T.: -0.003 min
 Response: 3297341401
 Conc: 724.52 ng/ml