

Data Path : Z:\pestpcbsrv\HPCHEM1\ECD\_S\Data\PS021623\  
 Data File : PS022164.D  
 Signal(s) : Signal #1: ECD1A.ch Signal #2: ECD2B.ch  
 Acq On : 15 Feb 2023 19:24  
 Operator : AR\AJ  
 Sample : 01537-02  
 Misc :  
 ALS Vial : 9 Sample Multiplier: 1

Instrument :  
 ECD\_S  
 ClientSampleId :

Integration File signal 1: autoint1.e  
 Integration File signal 2: autoint2.e  
 Quant Time: Feb 15 20:32:04 2023  
 Quant Method : Z:\pestpcbsrv\HPCHEM1\ECD\_S\Method\PS020223.M  
 Quant Title : 8080.M  
 QLast Update : Fri Feb 03 10:03:01 2023  
 Response via : Initial Calibration  
 Integrator: ChemStation

Volume Inj. : 2 µl  
 Signal #1 Phase : Rtx-CLPesticides Signal #2 Phase: Rtx-CLPesticides2  
 Signal #1 Info : 30M x 0.32mm x0.5 Signal #2 Info : 30M x 0.32mm x 0.25µm

	Compound	RT#1	RT#2	Resp#1	Resp#2	ng/ml	ng/ml
-----							
System Monitoring Compounds							
4) S	2,4-DCAA	6.317	6.725	3206.5E6	1080.0E6	1406.737	533.526 #
Target Compounds							
1) T	Dalapon	2.367f	2.446	341.1E6	597.1E6	109.875	191.880 #
2) T	3,5-DICHL...	5.680	5.941	250.1E6	146.3E6	72.621	48.958 #
3) T	4-Nitroph...	6.116	6.396f	12032471	24584704	8.940	18.410 #
5) T	DICAMBA	6.459	6.856	8230575	17286250	<MDL	1.830 #
6) T	MCP P	6.627	6.993	-4825208	10368300	N.D.	1.389
7) T	MCPA	6.741	7.178	3770918	47504191	<MDL	4.729 #
8) T	DICHLORPROP	7.025	7.525	-2026219	88035869	N.D.	36.797
9) T	2,4-D	0.000	7.785	0	11772004	N.D.	4.175
10) T	Pentachlo...	7.452	8.224	30717328	17869389	<MDL	<MDL #
11) T	2,4,5-TP ...	7.988	8.612	84308832	126.2E6	6.328	9.582 #
12) T	2,4,5-T	8.246	8.958	83171173	22419076	5.795	1.855 #
13) T	2,4-DB	8.749	9.465	166.4E6	78186431	75.659	46.302 #
14) T	DINOSEB	9.731f	9.779	3155.5E6	1331.2E6	306.827	142.411 #
15) T	Picloram	9.601	10.780	30269426	1206.0E6	1.625	66.453 #
16) T	DCPA	10.035	10.709	35464319	72895611	2.087	4.737 #

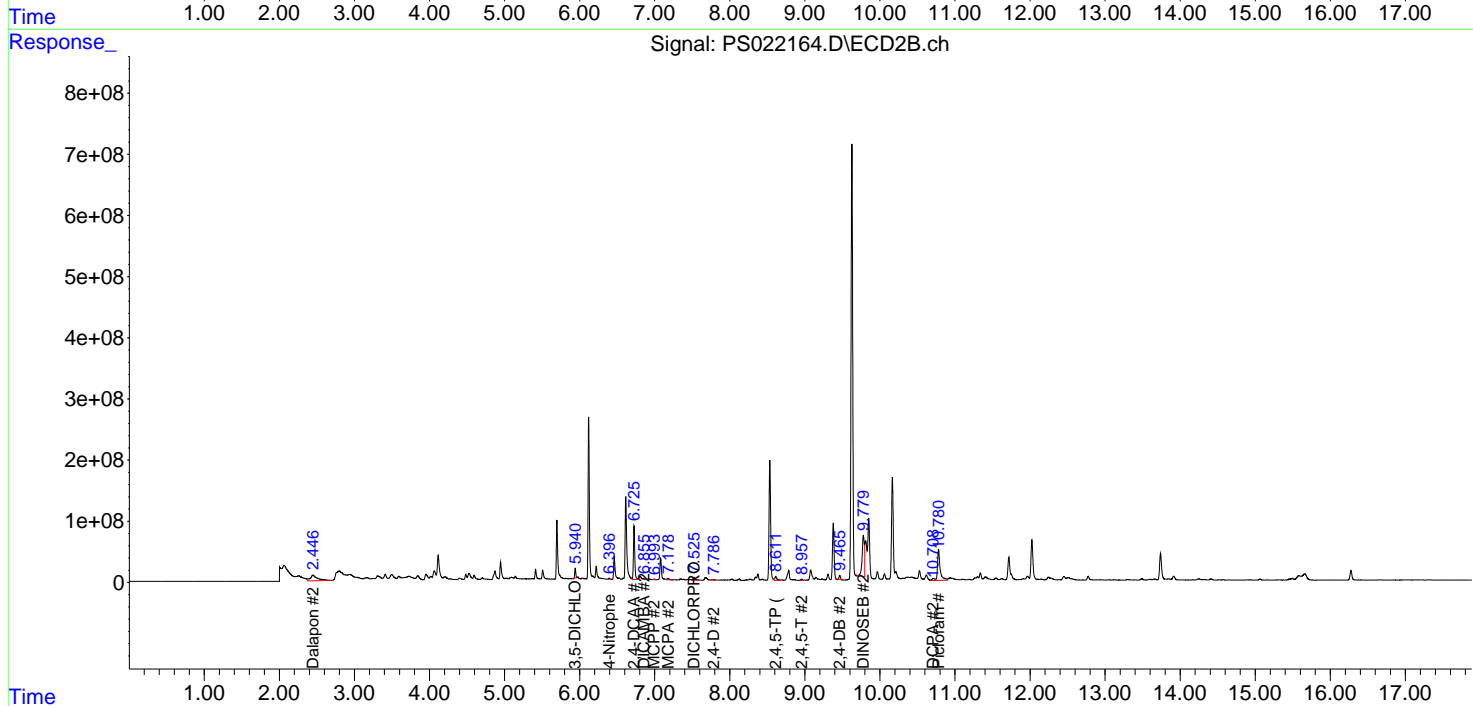
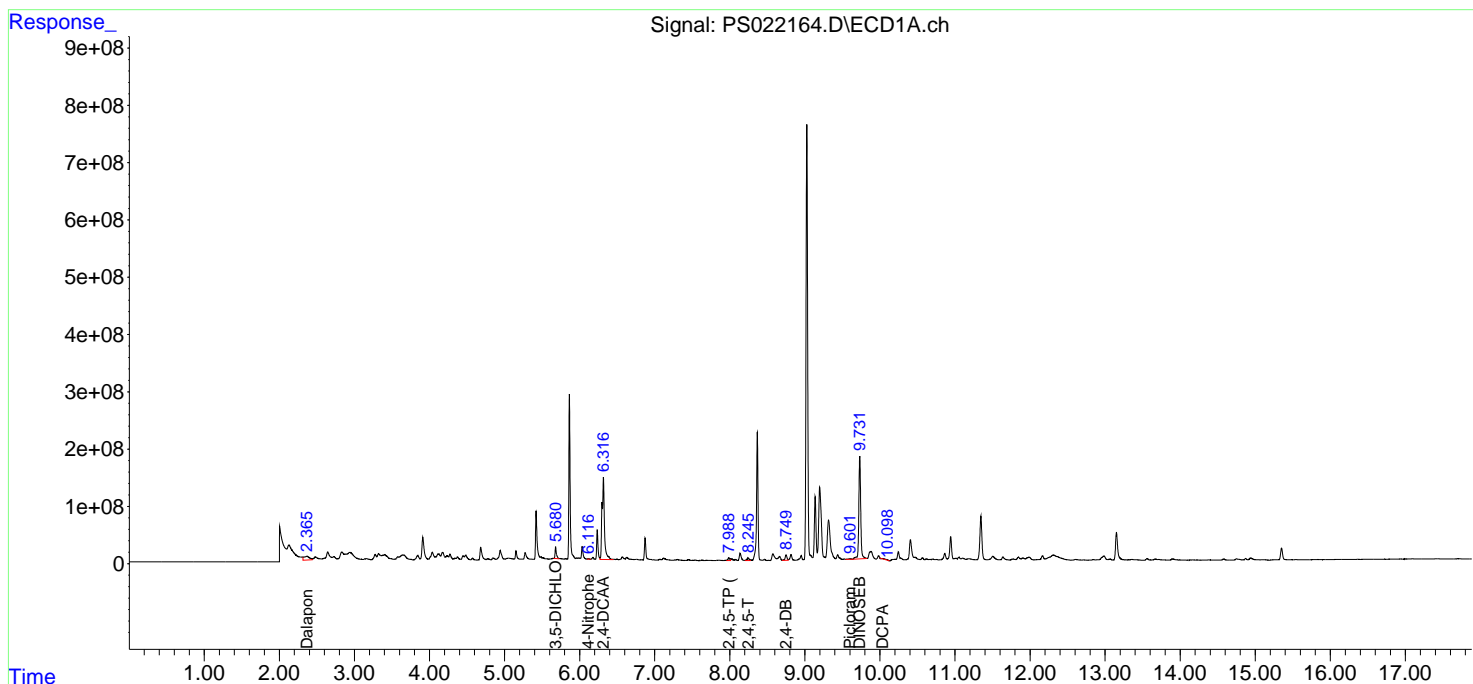
(f)=RT Delta > 1/2 Window (#)=Amounts differ by > 25% (m)=manual int.

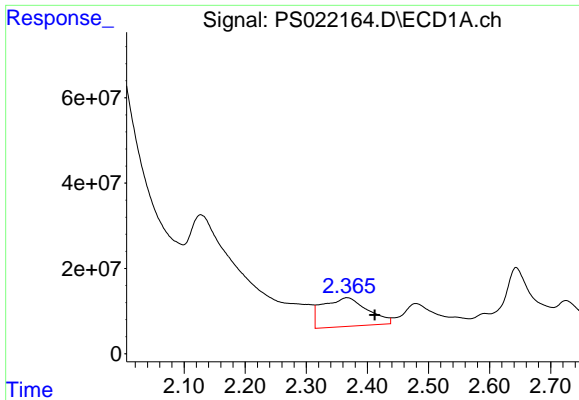
Data Path : Z:\pestpcbsrv\HPCHEM1\ECD\_S\Data\PS021623\  
 Data File : PS022164.D  
 Signal(s) : Signal #1: ECD1A.ch Signal #2: ECD2B.ch  
 Acq On : 15 Feb 2023 19:24  
 Operator : AR\AJ  
 Sample : 01537-02  
 Misc :  
 ALS Vial : 9 Sample Multiplier: 1

Instrument :  
 ECD\_S  
 ClientSampleId :

Integration File signal 1: autoint1.e  
 Integration File signal 2: autoint2.e  
 Quant Time: Feb 15 20:32:04 2023  
 Quant Method : Z:\pestpcbsrv\HPCHEM1\ECD\_S\Method\PS020223.M  
 Quant Title : 8080.M  
 QLast Update : Fri Feb 03 10:03:01 2023  
 Response via : Initial Calibration  
 Integrator: ChemStation

Volume Inj. : 2 µl  
 Signal #1 Phase : Rtx-CLPesticides Signal #2 Phase: Rtx-CLPesticides2  
 Signal #1 Info : 30M x 0.32mm x 0.5 Signal #2 Info : 30M x 0.32mm x 0.25µm

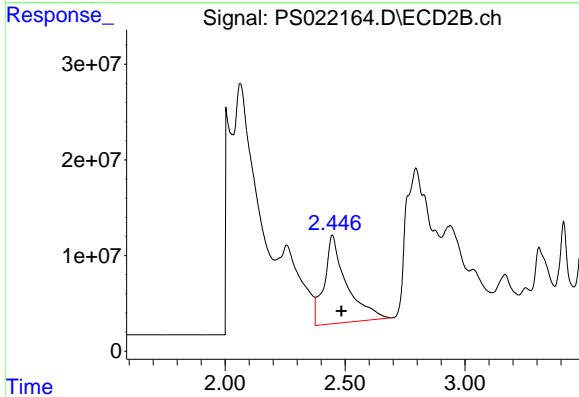




#1 Dalapon

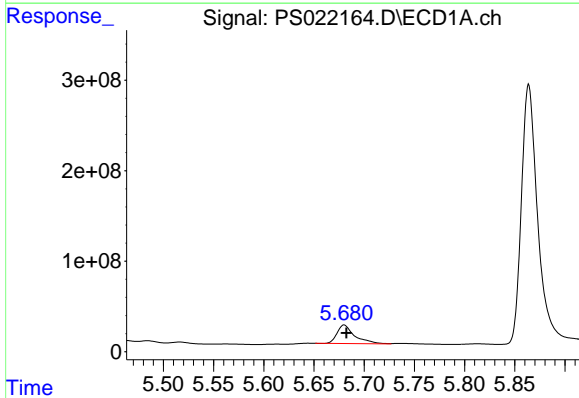
R.T.: 2.367 min  
 Delta R.T.: -0.045 min  
 Response: 341148576  
 Conc: 109.88 ng/ml

Instrument :  
 ECD\_S  
 ClientSampleId :



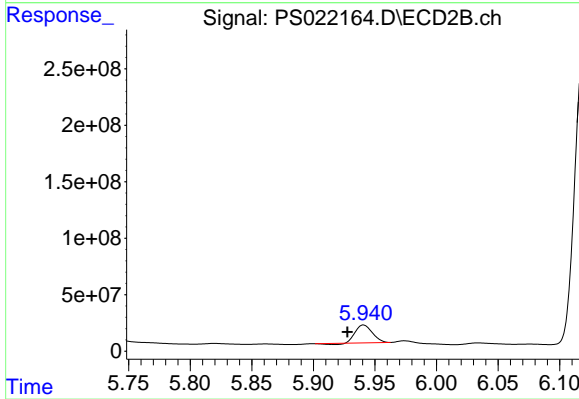
#1 Dalapon

R.T.: 2.446 min  
 Delta R.T.: -0.038 min  
 Response: 597061127  
 Conc: 191.88 ng/ml



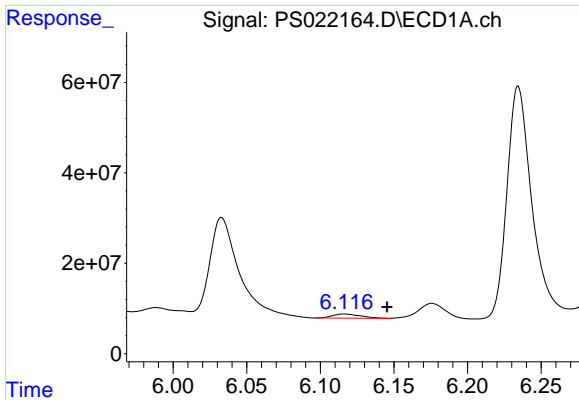
#2 3,5-DICHLOROBENZOIC ACID

R.T.: 5.680 min  
 Delta R.T.: -0.002 min  
 Response: 250081633  
 Conc: 72.62 ng/ml



#2 3,5-DICHLOROBENZOIC ACID

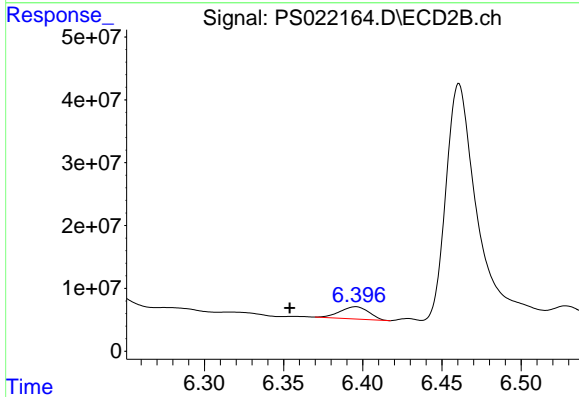
R.T.: 5.941 min  
 Delta R.T.: 0.013 min  
 Response: 146297088  
 Conc: 48.96 ng/ml



#3 4-Nitrophenol

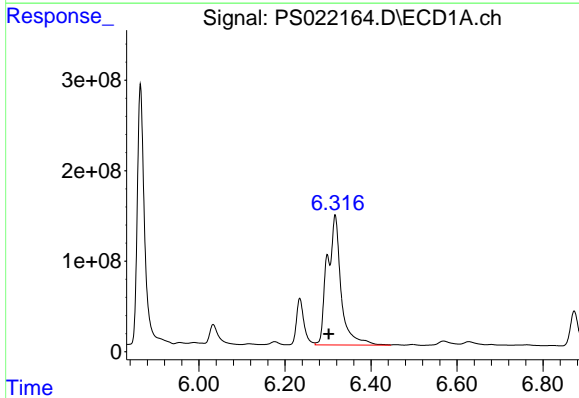
R.T.: 6.116 min  
 Delta R.T.: -0.029 min  
 Response: 12032471  
 Conc: 8.94 ng/ml

Instrument :  
 ECD\_S  
 ClientSampleId :



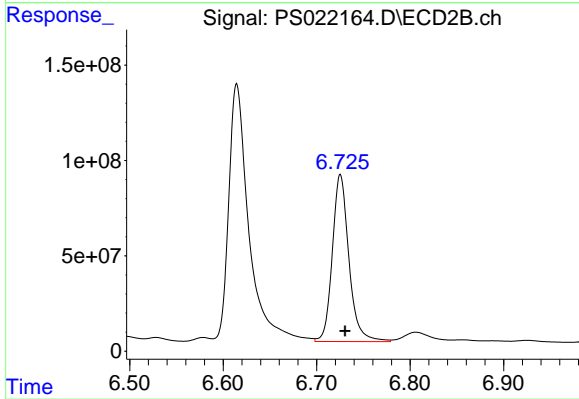
#3 4-Nitrophenol

R.T.: 6.396 min  
 Delta R.T.: 0.042 min  
 Response: 24584704  
 Conc: 18.41 ng/ml



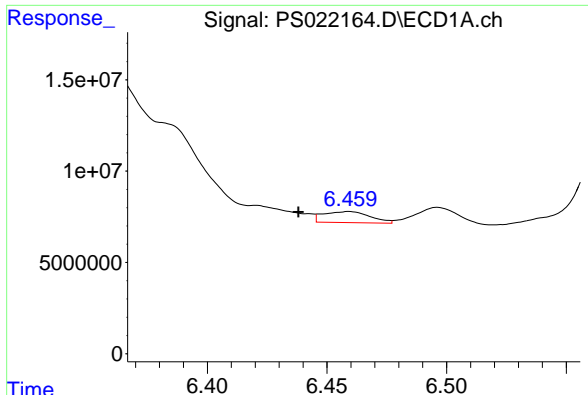
#4 2,4-DCAA

R.T.: 6.317 min  
 Delta R.T.: 0.015 min  
 Response: 3206465517  
 Conc: 1406.74 ng/ml



#4 2,4-DCAA

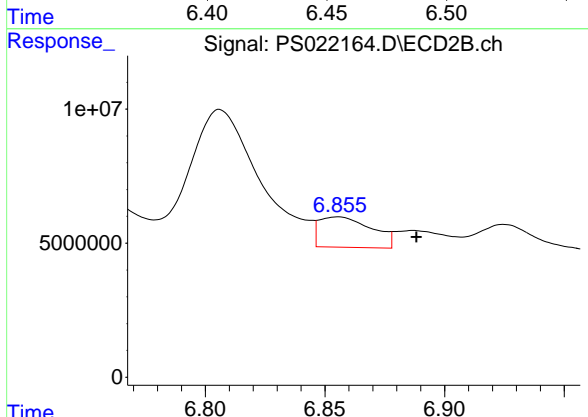
R.T.: 6.725 min  
 Delta R.T.: -0.005 min  
 Response: 1079984780  
 Conc: 533.53 ng/ml



#5 DICAMBA

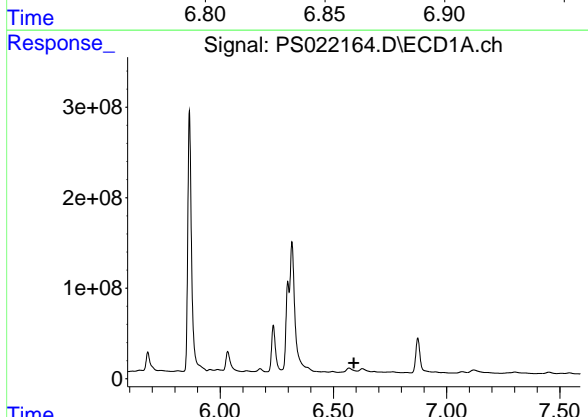
R.T.: 6.459 min  
 Delta R.T.: 0.021 min  
 Response: 8230575  
 Conc: N.D.

Instrument :  
 ECD\_S  
 ClientSampleId :



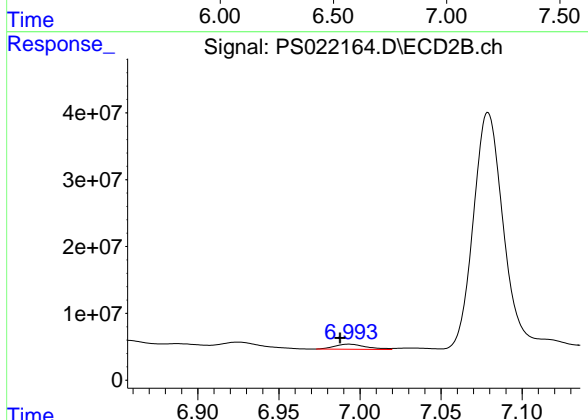
#5 DICAMBA

R.T.: 6.856 min  
 Delta R.T.: -0.033 min  
 Response: 17286250  
 Conc: 1.83 ng/ml



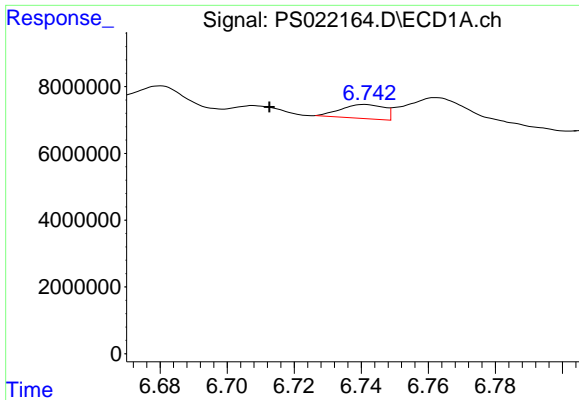
#6 MCP

R.T.: 6.627 min  
 Delta R.T.: 0.037 min  
 Response: -4825208  
 Conc: N.D.



#6 MCP

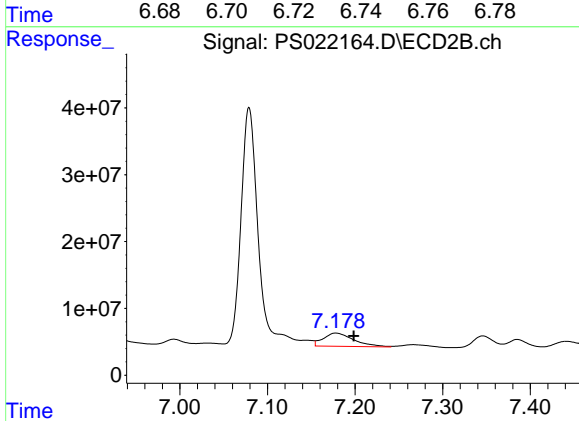
R.T.: 6.993 min  
 Delta R.T.: 0.006 min  
 Response: 10368300  
 Conc: 1.39 ug/ml



#7 MCPA

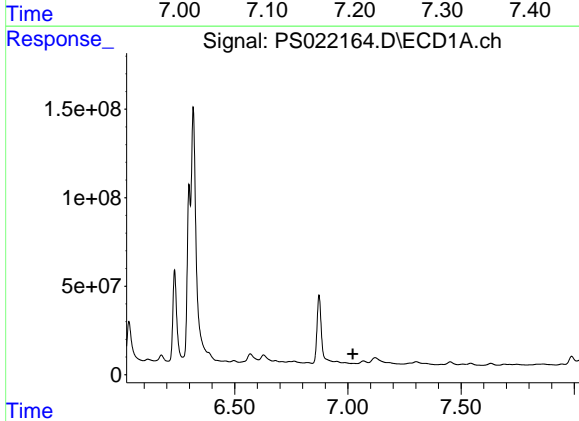
R.T.: 6.741 min  
 Delta R.T.: 0.029 min  
 Response: 3770918  
 Conc: N.D.

Instrument :  
 ECD\_S  
 ClientSampleId :



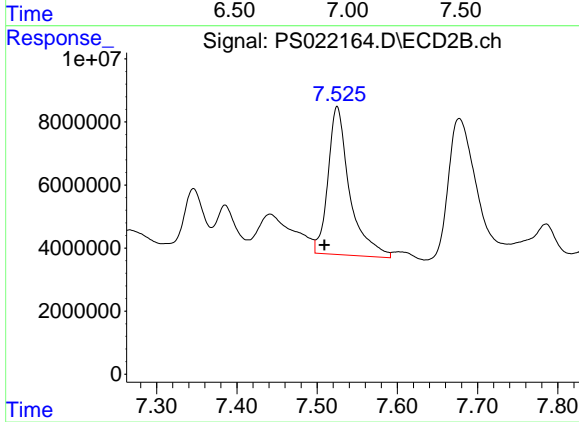
#7 MCPA

R.T.: 7.178 min  
 Delta R.T.: -0.020 min  
 Response: 47504191  
 Conc: 4.73 ug/ml



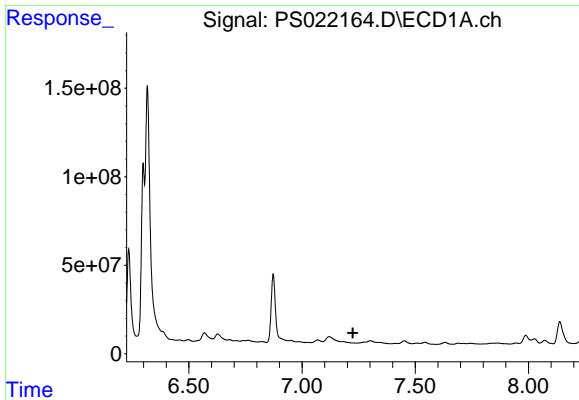
#8 DICHLORPROP

R.T.: 7.025 min  
 Delta R.T.: 0.003 min  
 Response: -2026219  
 Conc: N.D.



#8 DICHLORPROP

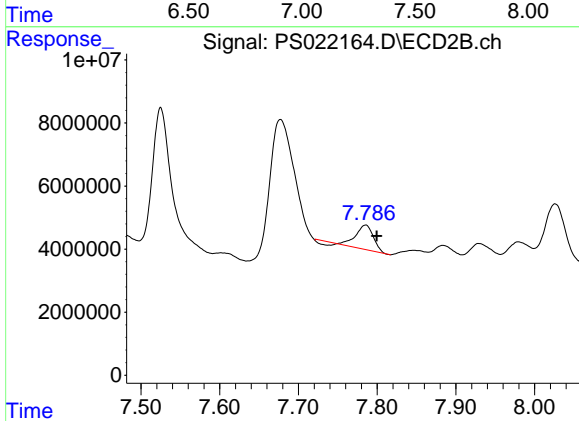
R.T.: 7.525 min  
 Delta R.T.: 0.016 min  
 Response: 88035869  
 Conc: 36.80 ng/ml



#9 2,4-D

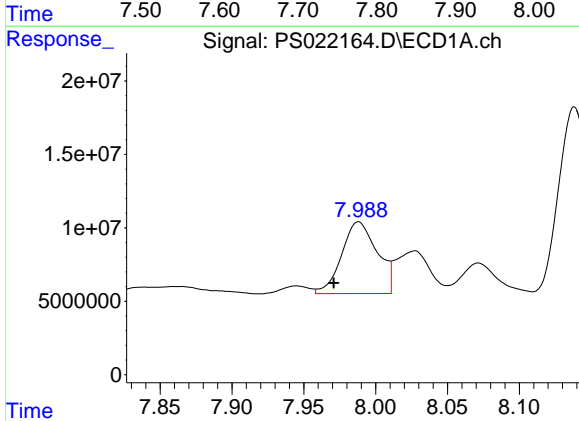
R.T.: 0.000 min  
 Exp R.T.: 7.225 min  
 Response: 0  
 Conc: N.D.

Instrument :  
 ECD\_S  
 ClientSampleId :



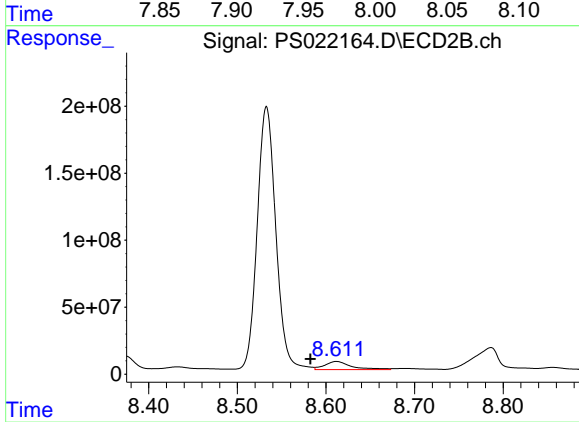
#9 2,4-D

R.T.: 7.785 min  
 Delta R.T.: -0.014 min  
 Response: 11772004  
 Conc: 4.17 ng/ml



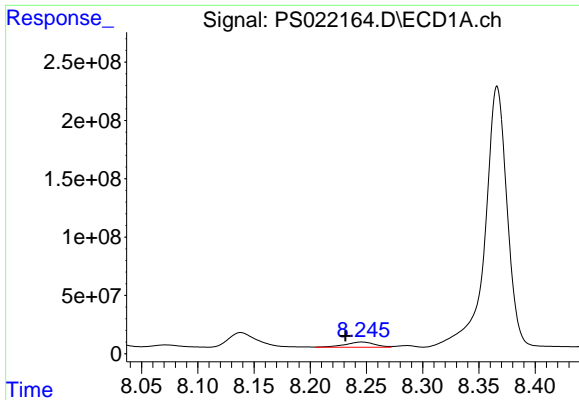
#11 2,4,5-TP (SILVEX)

R.T.: 7.988 min  
 Delta R.T.: 0.017 min  
 Response: 84308832  
 Conc: 6.33 ng/ml



#11 2,4,5-TP (SILVEX)

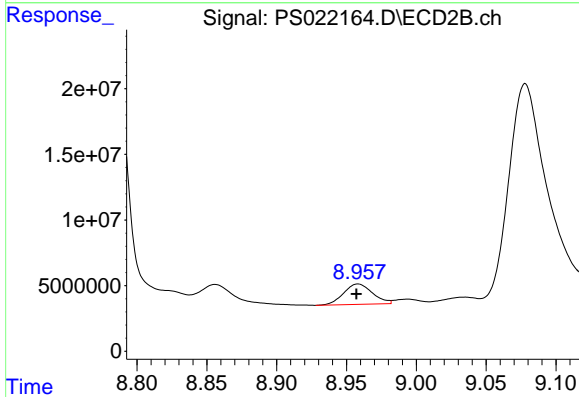
R.T.: 8.612 min  
 Delta R.T.: 0.029 min  
 Response: 126198491  
 Conc: 9.58 ng/ml



#12 2,4,5-T

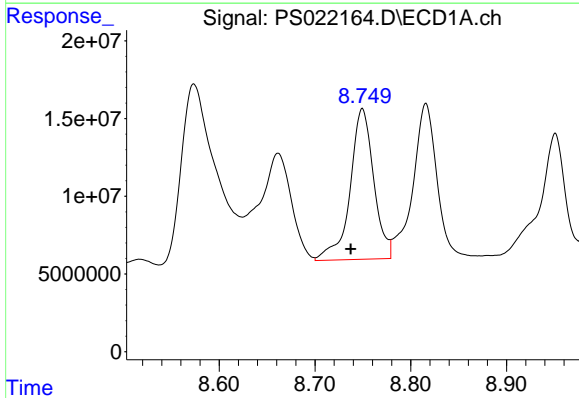
R.T.: 8.246 min  
 Delta R.T.: 0.015 min  
 Response: 83171173  
 Conc: 5.80 ng/ml

Instrument :  
 ECD\_S  
 ClientSampleId :



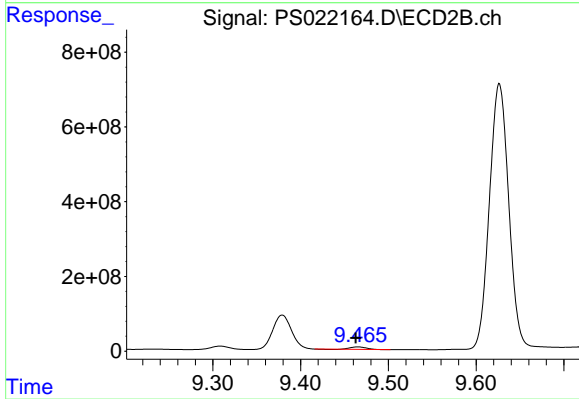
#12 2,4,5-T

R.T.: 8.958 min  
 Delta R.T.: 0.000 min  
 Response: 22419076  
 Conc: 1.86 ng/ml



#13 2,4-DB

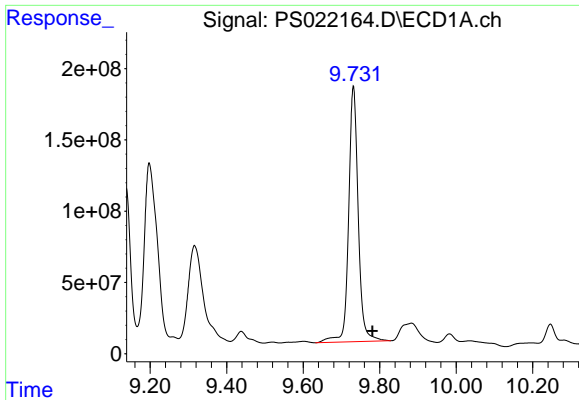
R.T.: 8.749 min  
 Delta R.T.: 0.012 min  
 Response: 166351175  
 Conc: 75.66 ng/ml



#13 2,4-DB

R.T.: 9.465 min  
 Delta R.T.: 0.003 min  
 Response: 78186431  
 Conc: 46.30 ng/ml

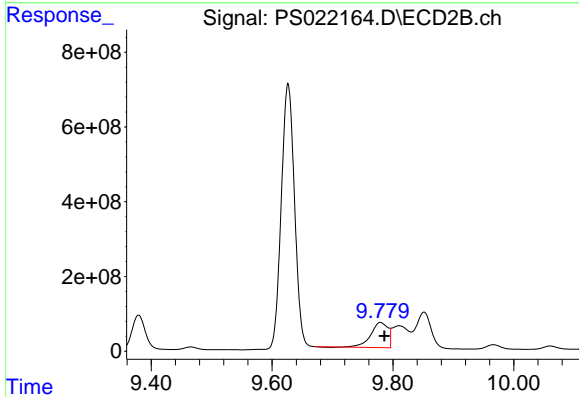




#14 DINOSEB

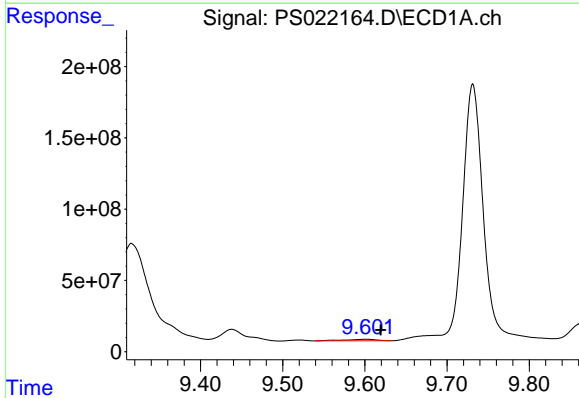
R.T.: 9.731 min  
Delta R.T.: -0.050 min  
Response: 3155459033  
Conc: 306.83 ng/ml

Instrument :  
ECD\_S  
ClientSampleId :



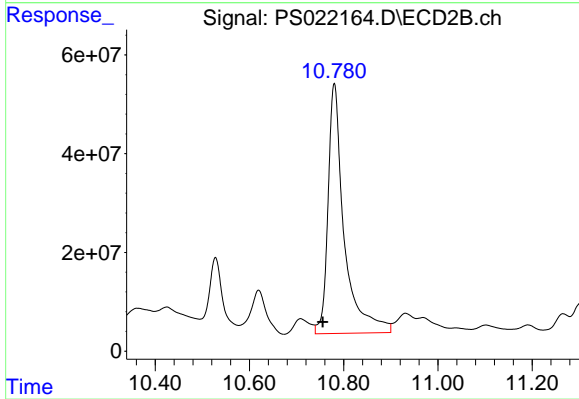
#14 DINOSEB

R.T.: 9.779 min  
Delta R.T.: -0.007 min  
Response: 1331157643  
Conc: 142.41 ng/ml



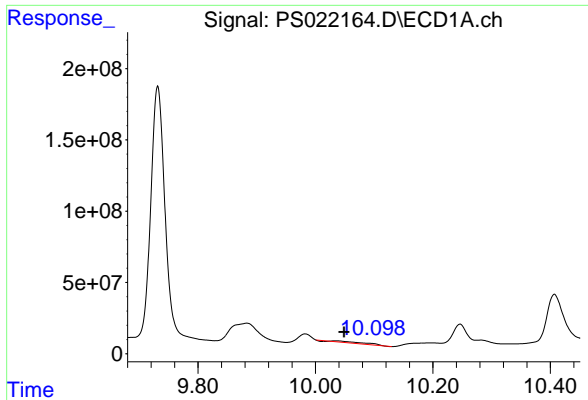
#15 Picloram

R.T.: 9.601 min  
Delta R.T.: -0.018 min  
Response: 30269426  
Conc: 1.63 ng/ml



#15 Picloram

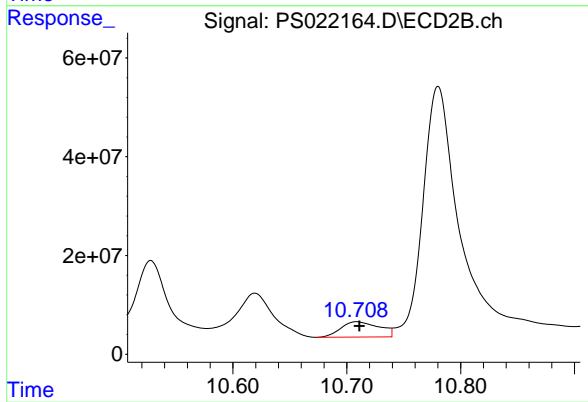
R.T.: 10.780 min  
Delta R.T.: 0.024 min  
Response: 1206046838  
Conc: 66.45 ng/ml



#16 DCPA

R.T.: 10.035 min  
Delta R.T.: -0.013 min  
Response: 35464319  
Conc: 2.09 ng/ml

Instrument :  
ECD\_S  
ClientSampleId :



#16 DCPA

R.T.: 10.709 min  
Delta R.T.: -0.002 min  
Response: 72895611  
Conc: 4.74 ng/ml