

Data Path : Z:\pestpcbsrv\HPCHEM1\ECD\_S\Data\PS021924\  
 Data File : PS025984.D  
 Signal(s) : Signal #1: ECD1A.ch Signal #2: ECD2B.ch  
 Acq On : 19 Feb 2024 12:18  
 Operator : AR\AJ  
 Sample : PB159091BS  
 Misc :  
 ALS Vial : 6 Sample Multiplier: 1

Instrument :  
 ECD\_S  
 ClientSampleId :  
 PB159091BS

Integration File signal 1: autoint1.e  
 Integration File signal 2: autoint2.e  
 Quant Time: Feb 20 00:17:11 2024  
 Quant Method : Z:\pestpcbsrv\HPCHEM1\ECD\_S\Method\PS021424.M  
 Quant Title : 8080.M  
 QLast Update : Wed Feb 14 15:17:36 2024  
 Response via : Initial Calibration  
 Integrator: ChemStation

Volume Inj. : 2 µl  
 Signal #1 Phase : Rtx-CLPesticides Signal #2 Phase: Rtx-CLPesticides2  
 Signal #1 Info : 30M x 0.32mm x0.5 Signal #2 Info : 30M x 0.32mm x 0.25µm

	Compound	RT#1	RT#2	Resp#1	Resp#2	ng/ml	ng/ml
-----							
System Monitoring Compounds							
4) S	2,4-DCAA	7.270	7.802	1438.8E6	431.3E6	543.639	494.157
Target Compounds							
1) T	Dalapon	2.676	2.728	2087.9E6	772.0E6	466.722	473.447
2) T	3,5-DICHL...	6.437	6.750	1931.0E6	610.6E6	497.414	456.841
3) T	4-Nitroph...	7.071	7.329	772.1E6	222.3E6	486.996	461.049
5) T	DICAMBA	7.460	8.004	5591.9E6	1792.4E6	507.505	463.874
6) T	MCP P	7.641	8.104	361.3E6	133.7E6	45.720	49.569
7) T	MCPA	7.792	8.348	563.5E6	186.3E6	49.541	48.361
8) T	DICHLORPROP	8.173	8.721	1458.4E6	451.9E6	516.950	469.168
9) T	2,4-D	8.405	9.052	1515.1E6	444.2E6	512.404	468.665
10) T	Pentachlo...	8.705	9.583	21357.1E6	6937.2E6	538.923	482.676
11) T	2,4,5-TP ...	9.289	9.958	8229.4E6	2618.1E6	527.972	481.179
12) T	2,4,5-T	9.583	10.379	8023.3E6	2390.8E6	527.568	478.835
13) T	2,4-DB	10.162	10.946	995.7E6	260.0E6	508.116	469.791
14) T	DINOSEB	11.382	11.324	5827.0E6	1769.2E6	525.697	493.052
15) T	Picloram	11.185	12.426	8758.9E6	2538.4E6	489.519	474.059
16) T	DCPA	11.673	12.371	10590.0E6	3095.2E6	538.632	480.617

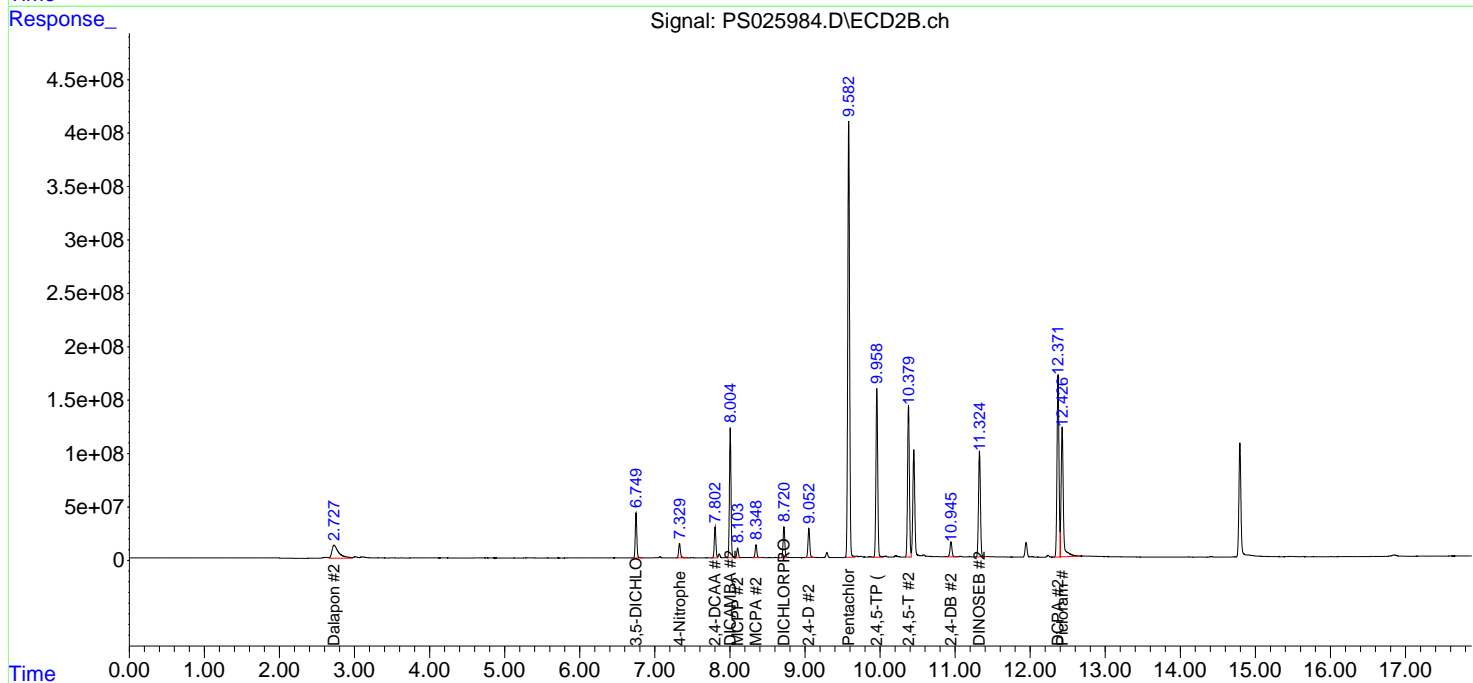
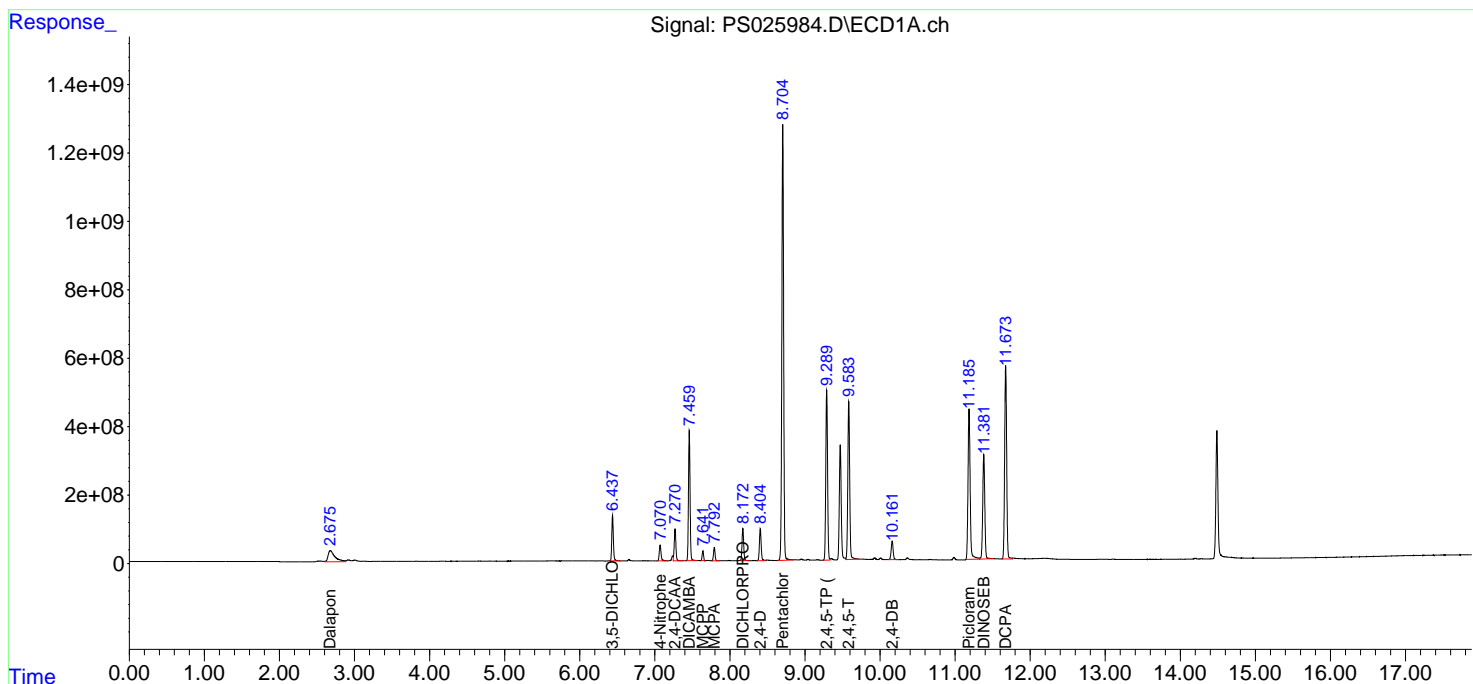
(f)=RT Delta > 1/2 Window (#)=Amounts differ by > 25% (m)=manual int.

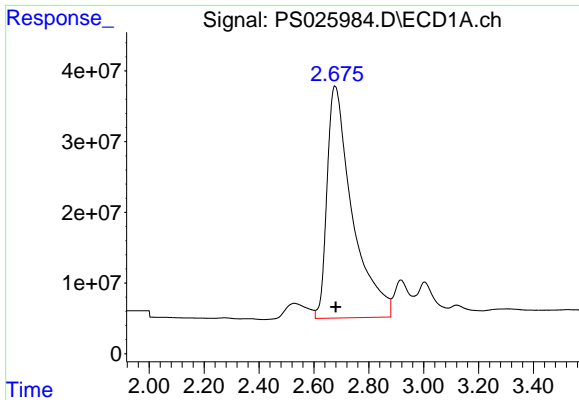
Data Path : Z:\pestpcbsrv\HPCHEM1\ECD\_S\Data\PS021924\  
 Data File : PS025984.D  
 Signal(s) : Signal #1: ECD1A.ch Signal #2: ECD2B.ch  
 Acq On : 19 Feb 2024 12:18  
 Operator : AR\AJ  
 Sample : PB159091BS  
 Misc :  
 ALS Vial : 6 Sample Multiplier: 1

Instrument :  
 ECD\_S  
 ClientSampleId :  
 PB159091BS

Integration File signal 1: autoint1.e  
 Integration File signal 2: autoint2.e  
 Quant Time: Feb 20 00:17:11 2024  
 Quant Method : Z:\pestpcbsrv\HPCHEM1\ECD\_S\Method\PS021424.M  
 Quant Title : 8080.M  
 QLast Update : Wed Feb 14 15:17:36 2024  
 Response via : Initial Calibration  
 Integrator: ChemStation

Volume Inj. : 2 µl  
 Signal #1 Phase : Rtx-CLPesticides Signal #2 Phase: Rtx-CLPesticides2  
 Signal #1 Info : 30M x 0.32mm x0.5 Signal #2 Info : 30M x 0.32mm x 0.25µm

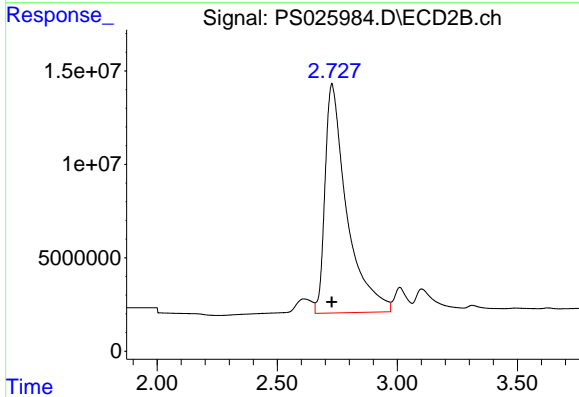




#1 Dalapon

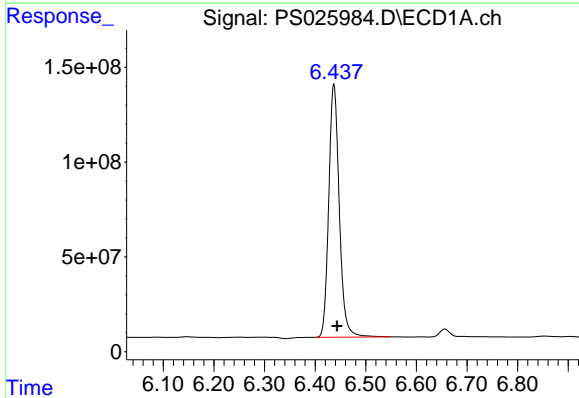
R.T.: 2.676 min  
 Delta R.T.: -0.004 min  
 Response: 2087885537  
 Conc: 466.72 ng/ml

Instrument :  
 ECD\_S  
 ClientSampleId :  
 PB159091BS



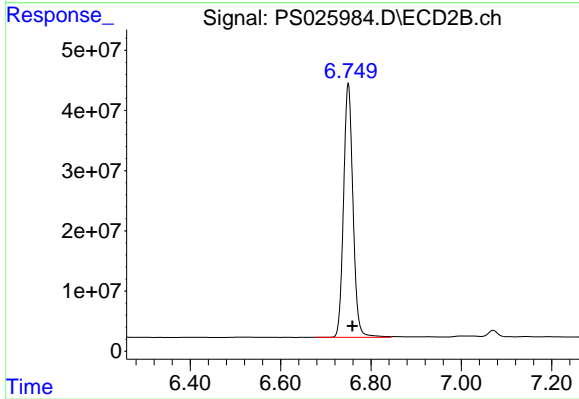
#1 Dalapon

R.T.: 2.728 min  
 Delta R.T.: 0.000 min  
 Response: 772005736  
 Conc: 473.45 ng/ml



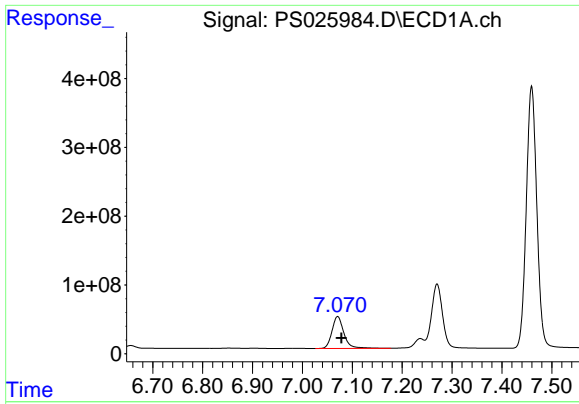
#2 3,5-DICHLOROBENZOIC ACID

R.T.: 6.437 min  
 Delta R.T.: -0.006 min  
 Response: 1931047630  
 Conc: 497.41 ng/ml



#2 3,5-DICHLOROBENZOIC ACID

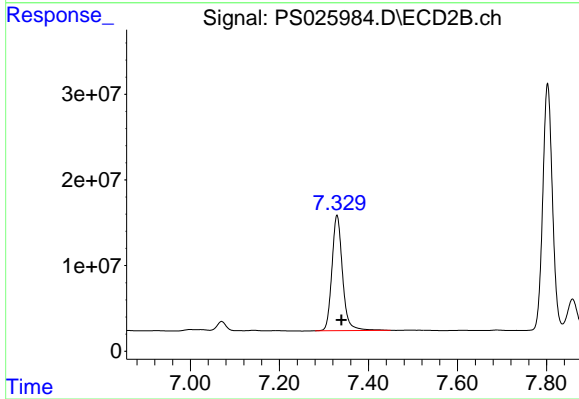
R.T.: 6.750 min  
 Delta R.T.: -0.009 min  
 Response: 610613874  
 Conc: 456.84 ng/ml



#3 4-Nitrophenol

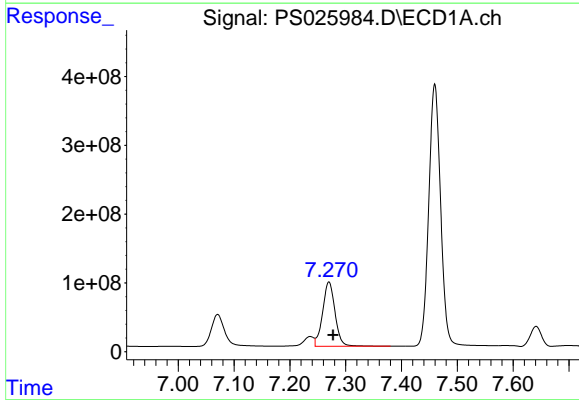
R.T.: 7.071 min  
 Delta R.T.: -0.007 min  
 Response: 772137713  
 Conc: 487.00 ng/ml

Instrument :  
 ECD\_S  
 ClientSampleId :  
 PB159091BS



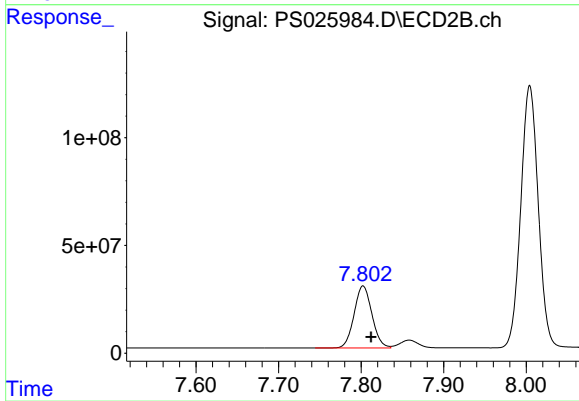
#3 4-Nitrophenol

R.T.: 7.329 min  
 Delta R.T.: -0.010 min  
 Response: 222293435  
 Conc: 461.05 ng/ml



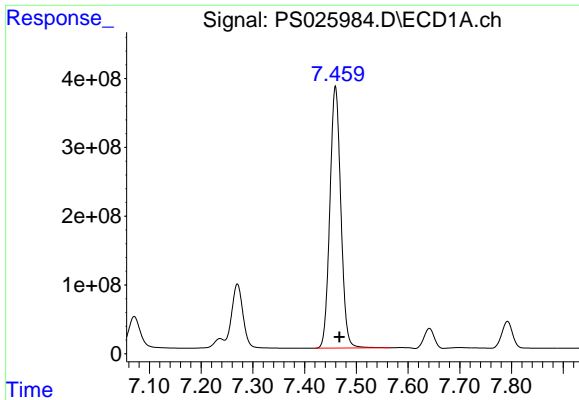
#4 2,4-DCAA

R.T.: 7.270 min  
 Delta R.T.: -0.007 min  
 Response: 1438780382  
 Conc: 543.64 ng/ml



#4 2,4-DCAA

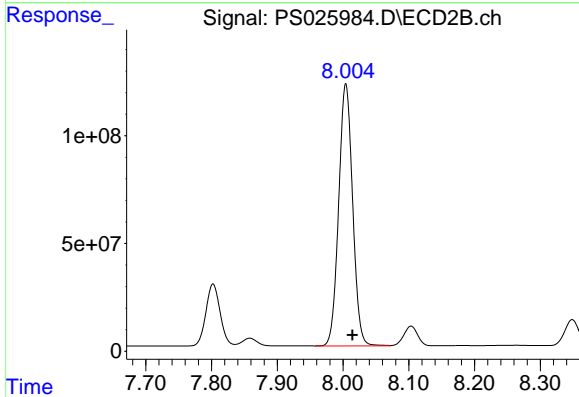
R.T.: 7.802 min  
 Delta R.T.: -0.010 min  
 Response: 431326216  
 Conc: 494.16 ng/ml



#5 DICAMBA

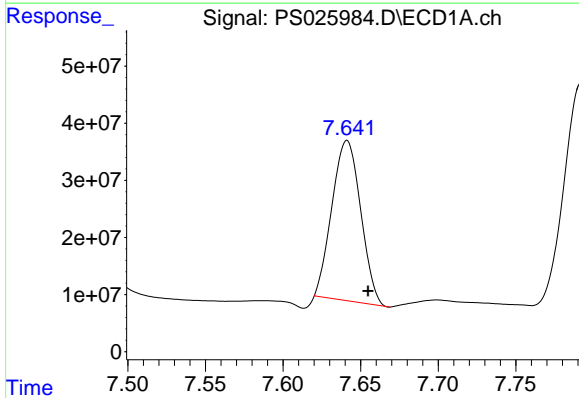
R.T.: 7.460 min  
 Delta R.T.: -0.008 min  
 Response: 5591902058  
 Conc: 507.50 ng/ml

Instrument :  
 ECD\_S  
 ClientSampleId :  
 PB159091BS



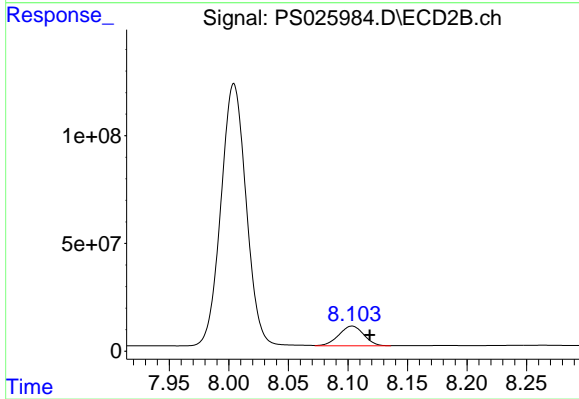
#5 DICAMBA

R.T.: 8.004 min  
 Delta R.T.: -0.010 min  
 Response: 1792370745  
 Conc: 463.87 ng/ml



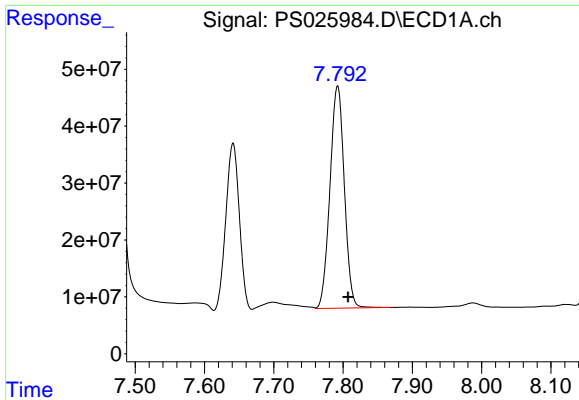
#6 MCP

R.T.: 7.641 min  
 Delta R.T.: -0.013 min  
 Response: 361303907  
 Conc: 45.72 ug/ml



#6 MCP

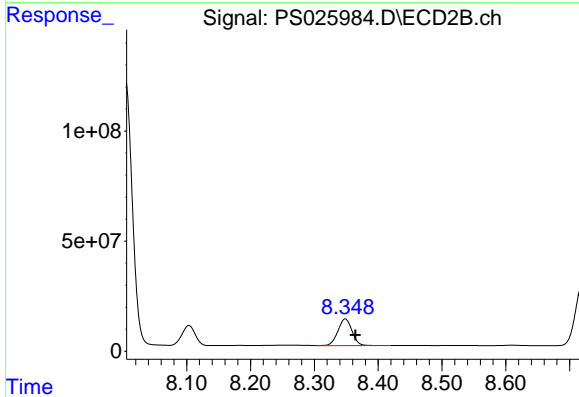
R.T.: 8.104 min  
 Delta R.T.: -0.015 min  
 Response: 133700507  
 Conc: 49.57 ug/ml



#7 MCPA

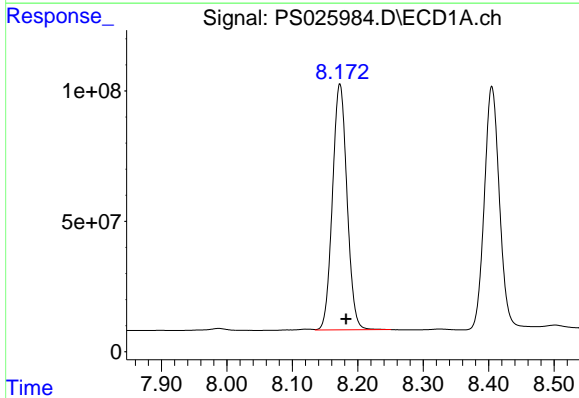
R.T.: 7.792 min  
 Delta R.T.: -0.015 min  
 Response: 563491536  
 Conc: 49.54 ug/ml

Instrument :  
 ECD\_S  
 ClientSampleId :  
 PB159091BS



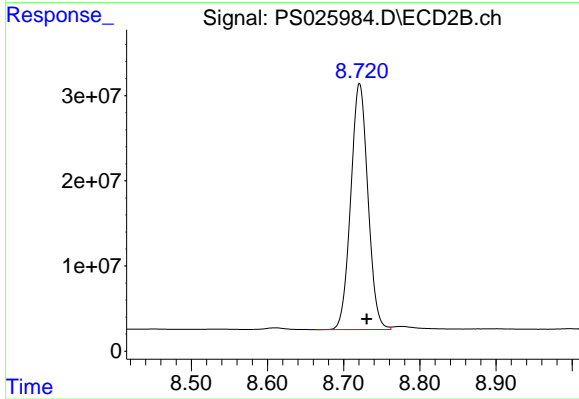
#7 MCPA

R.T.: 8.348 min  
 Delta R.T.: -0.016 min  
 Response: 186299658  
 Conc: 48.36 ug/ml



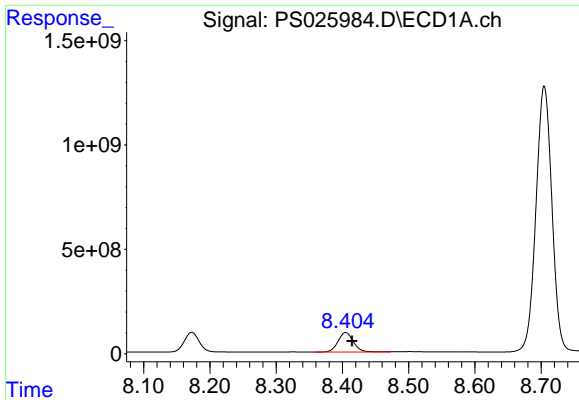
#8 DICHLORPROP

R.T.: 8.173 min  
 Delta R.T.: -0.009 min  
 Response: 1458402262  
 Conc: 516.95 ng/ml



#8 DICHLORPROP

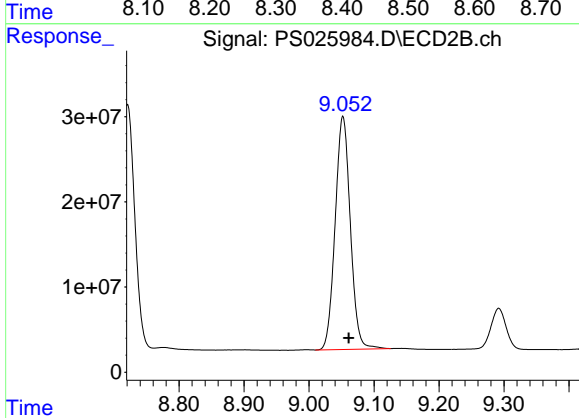
R.T.: 8.721 min  
 Delta R.T.: -0.009 min  
 Response: 451935504  
 Conc: 469.17 ng/ml



#9 2,4-D

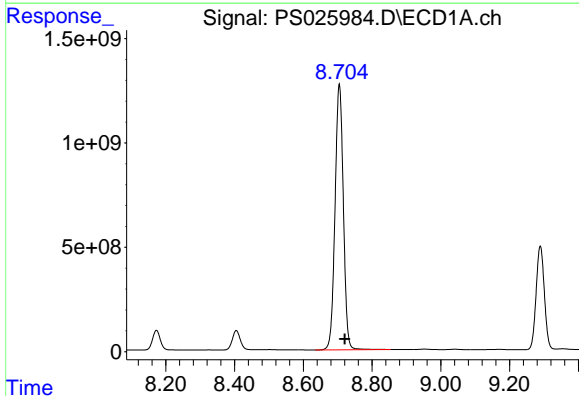
R.T.: 8.405 min  
 Delta R.T.: -0.009 min  
 Response: 1515060782  
 Conc: 512.40 ng/ml

Instrument :  
 ECD\_S  
 ClientSampleId :  
 PB159091BS



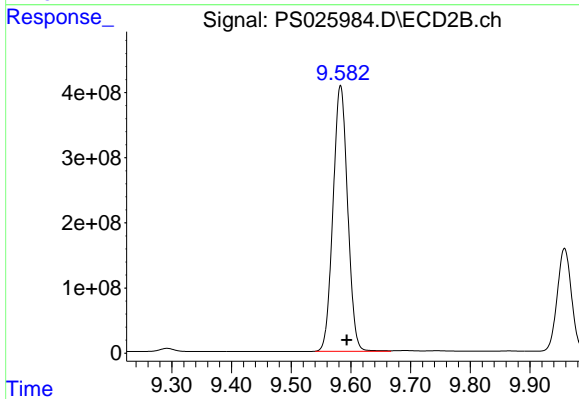
#9 2,4-D

R.T.: 9.052 min  
 Delta R.T.: -0.009 min  
 Response: 444201074  
 Conc: 468.66 ng/ml



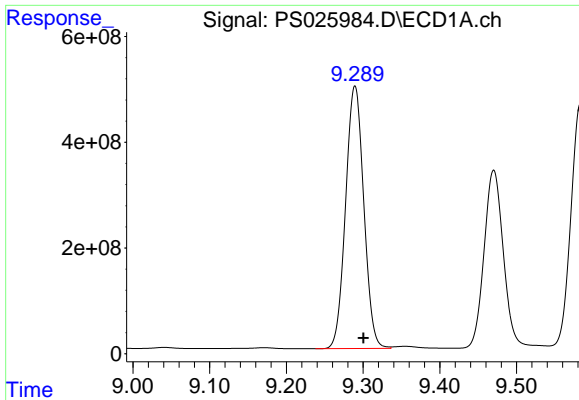
#10 Pentachlorophenol

R.T.: 8.705 min  
 Delta R.T.: -0.016 min  
 Response: 21357092710  
 Conc: 538.92 ng/ml



#10 Pentachlorophenol

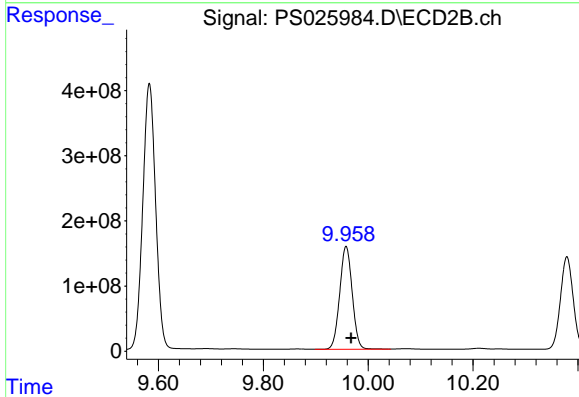
R.T.: 9.583 min  
 Delta R.T.: -0.010 min  
 Response: 6937218611  
 Conc: 482.68 ng/ml



#11 2,4,5-TP (SILVEX)

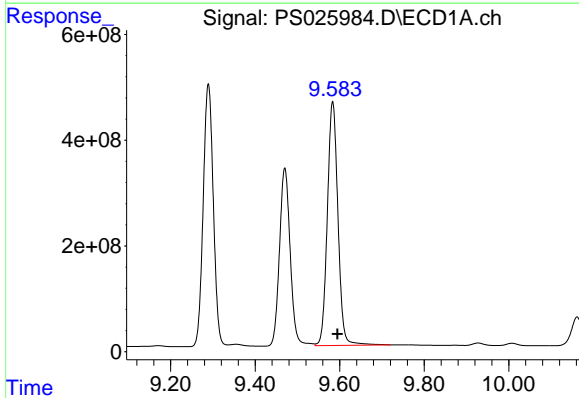
R.T.: 9.289 min  
 Delta R.T.: -0.011 min  
 Response: 8229383511  
 Conc: 527.97 ng/ml

Instrument :  
 ECD\_S  
 ClientSampleId :  
 PB159091BS



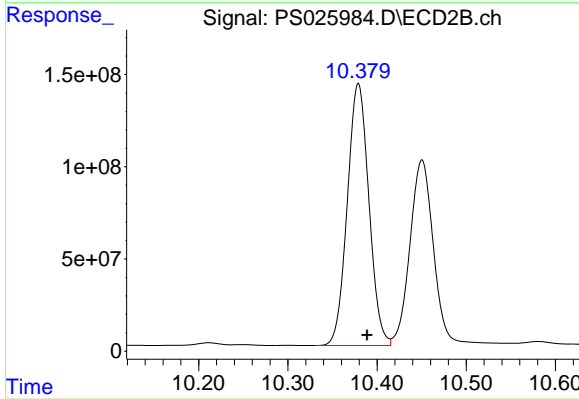
#11 2,4,5-TP (SILVEX)

R.T.: 9.958 min  
 Delta R.T.: -0.010 min  
 Response: 2618142947  
 Conc: 481.18 ng/ml



#12 2,4,5-T

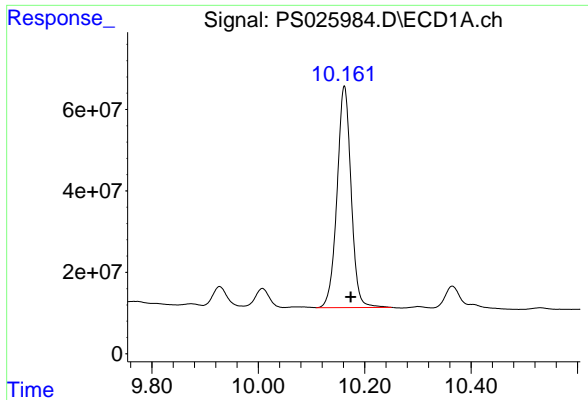
R.T.: 9.583 min  
 Delta R.T.: -0.011 min  
 Response: 8023307251  
 Conc: 527.57 ng/ml



#12 2,4,5-T

R.T.: 10.379 min  
 Delta R.T.: -0.010 min  
 Response: 2390771345  
 Conc: 478.84 ng/ml

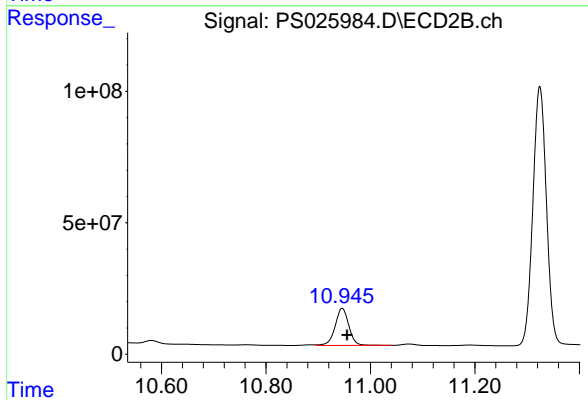




#13 2,4-DB

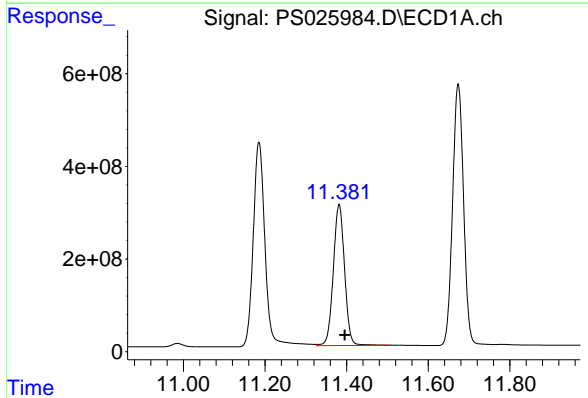
R.T.: 10.162 min  
Delta R.T.: -0.012 min  
Response: 995736405  
Conc: 508.12 ng/ml

Instrument :  
ECD\_S  
ClientSampleId :  
PB159091BS



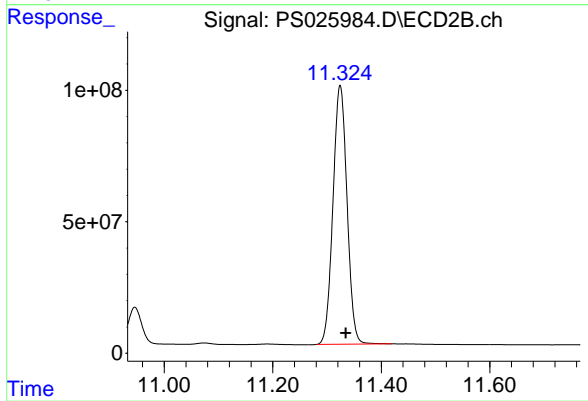
#13 2,4-DB

R.T.: 10.946 min  
Delta R.T.: -0.009 min  
Response: 259977903  
Conc: 469.79 ng/ml



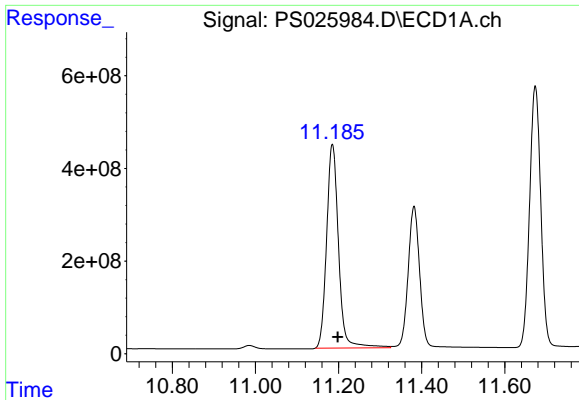
#14 DINOSEB

R.T.: 11.382 min  
Delta R.T.: -0.014 min  
Response: 5826958379  
Conc: 525.70 ng/ml



#14 DINOSEB

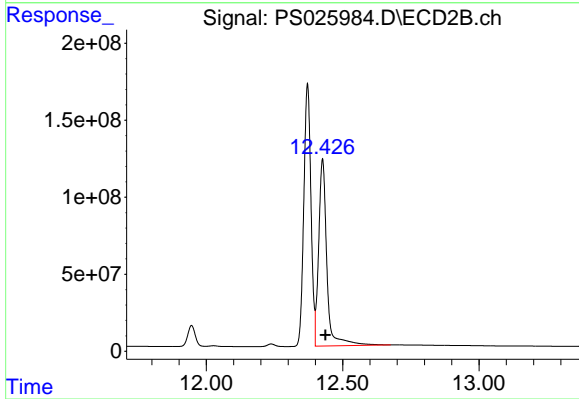
R.T.: 11.324 min  
Delta R.T.: -0.010 min  
Response: 1769217350  
Conc: 493.05 ng/ml



#15 Picloram

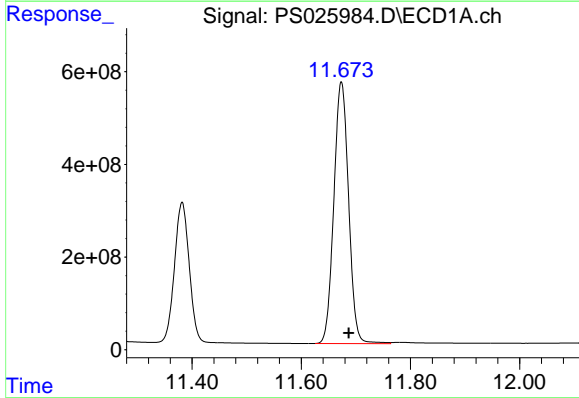
R.T.: 11.185 min  
 Delta R.T.: -0.013 min  
 Response: 8758917083  
 Conc: 489.52 ng/ml

Instrument :  
 ECD\_S  
 ClientSampleId :  
 PB159091BS



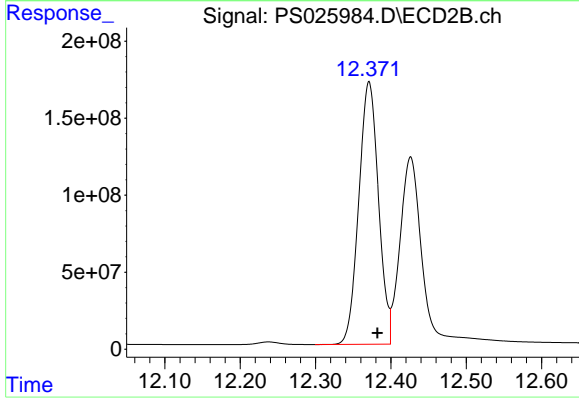
#15 Picloram

R.T.: 12.426 min  
 Delta R.T.: -0.011 min  
 Response: 2538422997  
 Conc: 474.06 ng/ml



#16 DCPA

R.T.: 11.673 min  
 Delta R.T.: -0.014 min  
 Response: 10590002227  
 Conc: 538.63 ng/ml



#16 DCPA

R.T.: 12.371 min  
 Delta R.T.: -0.011 min  
 Response: 3095172644  
 Conc: 480.62 ng/ml