

Data Path : Z:\pestpcbsrv\HPCHEM1\ECD_S\Data\PS021924\
 Data File : PS025988.D
 Signal(s) : Signal #1: ECD1A.ch Signal #2: ECD2B.ch
 Acq On : 19 Feb 2024 15:11
 Operator : AR\AJ
 Sample : HSTDCCC750
 Misc :
 ALS Vial : 3 Sample Multiplier: 1

Instrument :
 ECD_S
 ClientSampleId :
 HSTDCCC750

Integration File signal 1: autoint1.e
 Integration File signal 2: autoint2.e
 Quant Time: Feb 20 00:18:51 2024
 Quant Method : Z:\pestpcbsrv\HPCHEM1\ECD_S\Method\PS021424.M
 Quant Title : 8080.M
 QLast Update : Wed Feb 14 15:17:36 2024
 Response via : Initial Calibration
 Integrator: ChemStation

Volume Inj. : 2 µl
 Signal #1 Phase : Rtx-CLPesticides Signal #2 Phase: Rtx-CLPesticides2
 Signal #1 Info : 30M x 0.32mm x0.5 Signal #2 Info : 30M x 0.32mm x 0.25µm

	Compound	RT#1	RT#2	Resp#1	Resp#2	ng/ml	ng/ml

System Monitoring Compounds							
4) S	2,4-DCAA	7.270	7.802	1986.2E6	615.1E6	750.483	704.708
Target Compounds							
1) T	Dalapon	2.676	2.727	2913.0E6	1098.1E6	651.158	673.426
2) T	3,5-DICHL...	6.437	6.750	2690.5E6	878.2E6	693.045	657.021
3) T	4-Nitroph...	7.070	7.329	1078.6E6	313.0E6	680.283	649.277
5) T	DICAMBA	7.459	8.004	7906.1E6	2618.3E6	717.538	677.629
6) T	MCP P	7.642	8.104	515.8E6	200.1E6	65.269	74.198
7) T	MCPA	7.794	8.350	806.5E6	269.6E6	70.903	69.974
8) T	DICHLORPROP	8.172	8.720	2027.0E6	646.0E6	718.490	670.626
9) T	2,4-D	8.405	9.052	2105.3E6	635.6E6	712.032	670.553
10) T	Pentachlo...	8.705	9.582	29666.9E6	9839.7E6	748.611	684.627
11) T	2,4,5-TP ...	9.289	9.957	11443.3E6	3749.3E6	734.166	689.061
12) T	2,4,5-T	9.583	10.378	11177.1E6	3447.4E6	734.943	690.463
13) T	2,4-DB	10.162	10.945	1430.0E6	376.2E6	729.737	679.792
14) T	DINOSEB	11.381	11.325	8127.6E6	2533.2E6	733.258	705.973
15) T	Picloram	11.185	12.425	12654.4E6	3650.0E6	707.230	681.649
16) T	DCPA	11.674	12.370	14717.0E6	4428.2E6	748.542	687.607

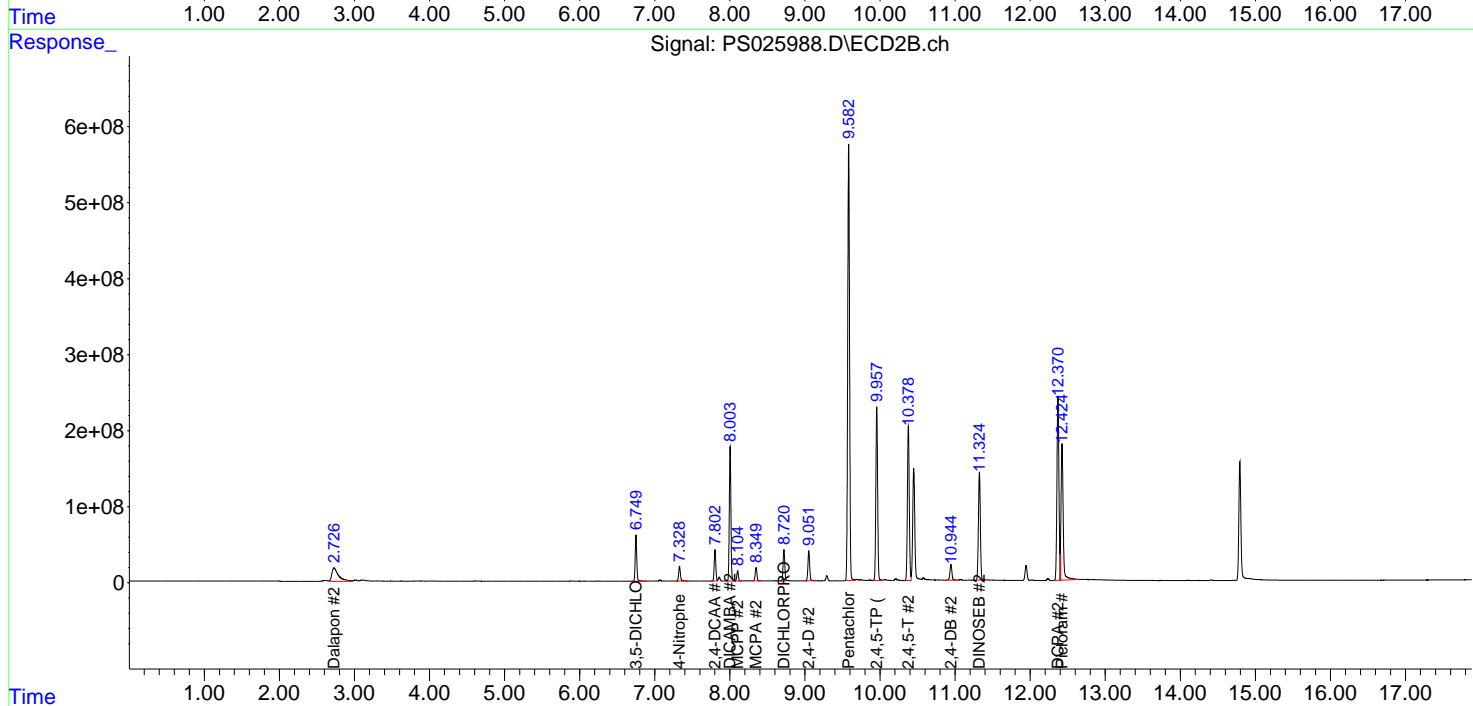
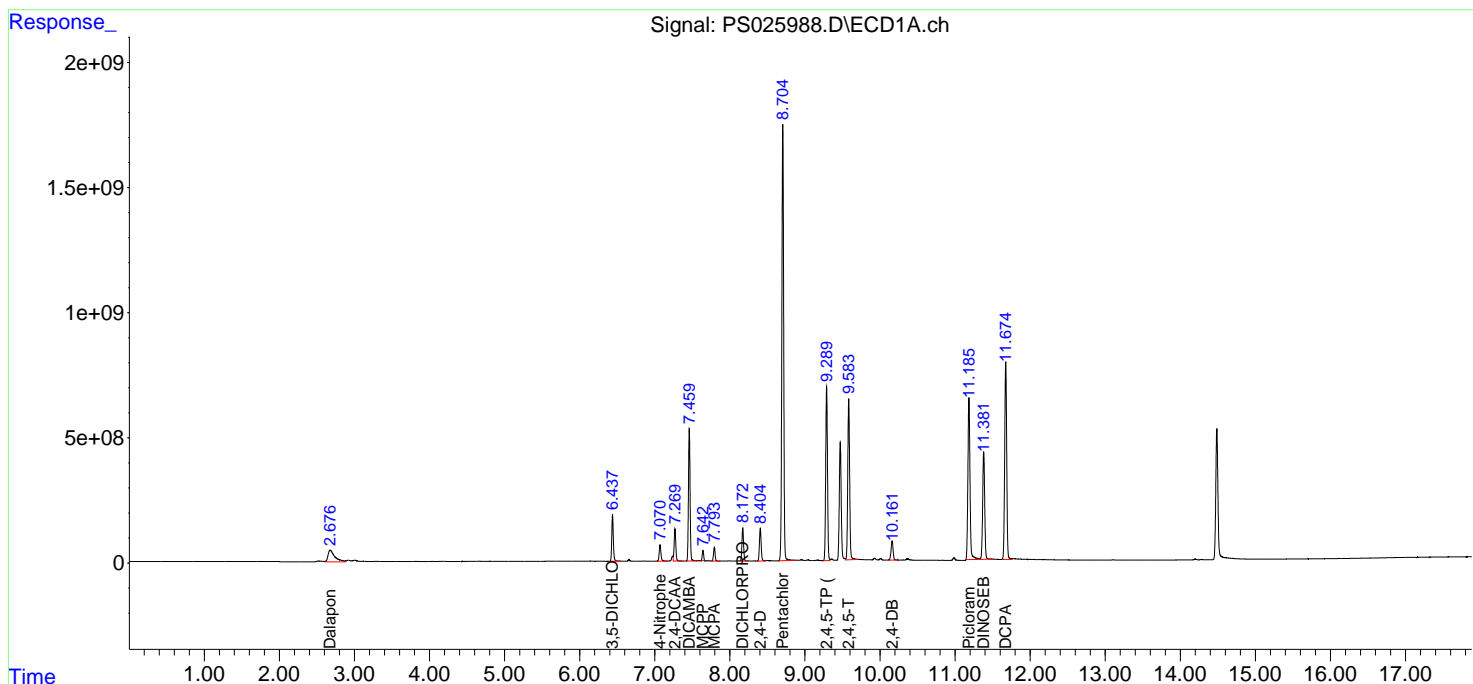
(f)=RT Delta > 1/2 Window (#)=Amounts differ by > 25% (m)=manual int.

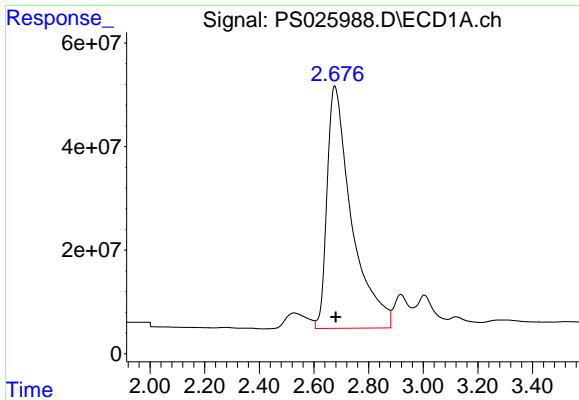
Data Path : Z:\pestpcbsrv\HPCHEM1\ECD_S\Data\PS021924\
 Data File : PS025988.D
 Signal(s) : Signal #1: ECD1A.ch Signal #2: ECD2B.ch
 Acq On : 19 Feb 2024 15:11
 Operator : AR\AJ
 Sample : HSTDCCC750
 Misc :
 ALS Vial : 3 Sample Multiplier: 1

Instrument :
 ECD_S
 ClientSampleId :
 HSTDCCC750

Integration File signal 1: autoint1.e
 Integration File signal 2: autoint2.e
 Quant Time: Feb 20 00:18:51 2024
 Quant Method : Z:\pestpcbsrv\HPCHEM1\ECD_S\Method\PS021424.M
 Quant Title : 8080.M
 QLast Update : Wed Feb 14 15:17:36 2024
 Response via : Initial Calibration
 Integrator: ChemStation

Volume Inj. : 2 µl
 Signal #1 Phase : Rtx-CLPesticides Signal #2 Phase: Rtx-CLPesticides2
 Signal #1 Info : 30M x 0.32mm x0.5 Signal #2 Info : 30M x 0.32mm x 0.25µm

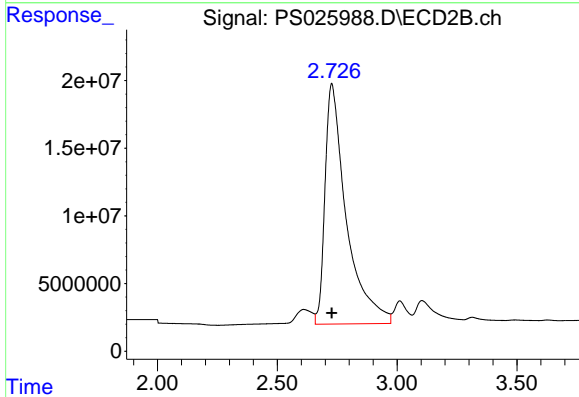




#1 Dalapon

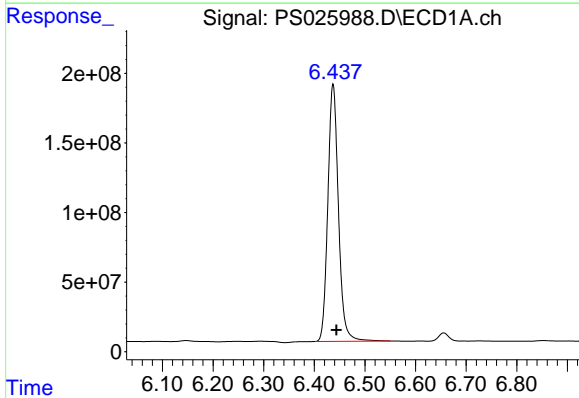
R.T.: 2.676 min
 Delta R.T.: -0.004 min
 Response: 2912961579
 Conc: 651.16 ng/ml

Instrument :
 ECD_S
 ClientSampleId :
 HSTDCCC750



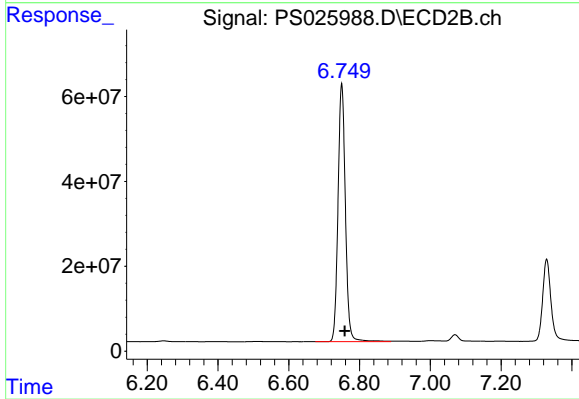
#1 Dalapon

R.T.: 2.727 min
 Delta R.T.: 0.000 min
 Response: 1098094018
 Conc: 673.43 ng/ml



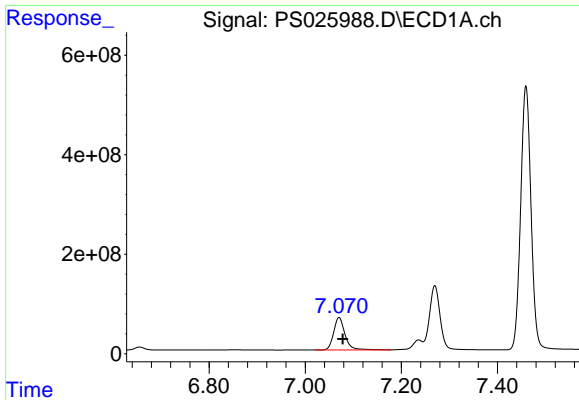
#2 3,5-DICHLOROBENZOIC ACID

R.T.: 6.437 min
 Delta R.T.: -0.006 min
 Response: 2690518385
 Conc: 693.04 ng/ml



#2 3,5-DICHLOROBENZOIC ACID

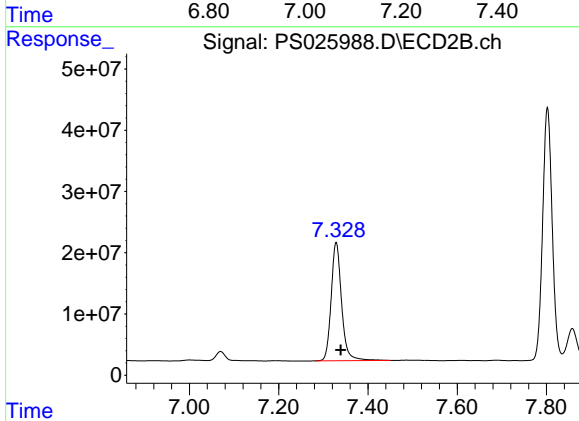
R.T.: 6.750 min
 Delta R.T.: -0.009 min
 Response: 878175248
 Conc: 657.02 ng/ml



#3 4-Nitrophenol

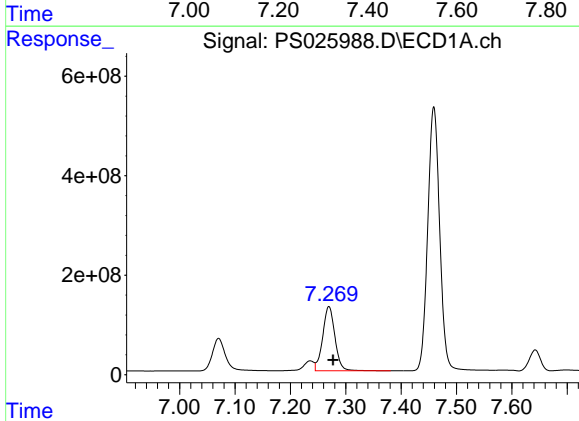
R.T.: 7.070 min
 Delta R.T.: -0.008 min
 Response: 1078596416
 Conc: 680.28 ng/ml

Instrument :
 ECD_S
 ClientSampleId :
 HSTDCCC750



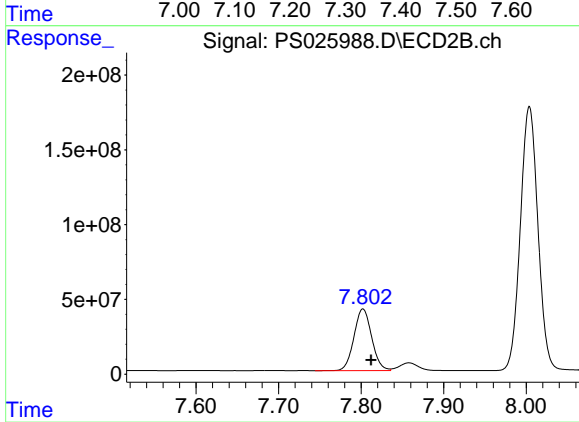
#3 4-Nitrophenol

R.T.: 7.329 min
 Delta R.T.: -0.011 min
 Response: 313047184
 Conc: 649.28 ng/ml



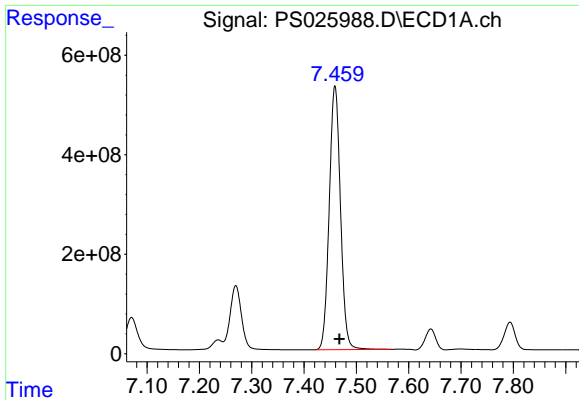
#4 2,4-DCAA

R.T.: 7.270 min
 Delta R.T.: -0.008 min
 Response: 1986209029
 Conc: 750.48 ng/ml



#4 2,4-DCAA

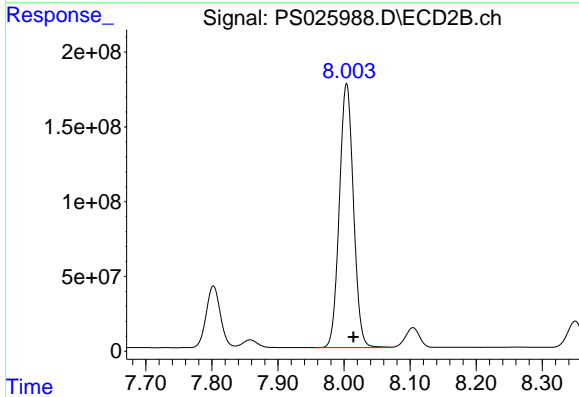
R.T.: 7.802 min
 Delta R.T.: -0.010 min
 Response: 615105376
 Conc: 704.71 ng/ml



#5 DICAMBA

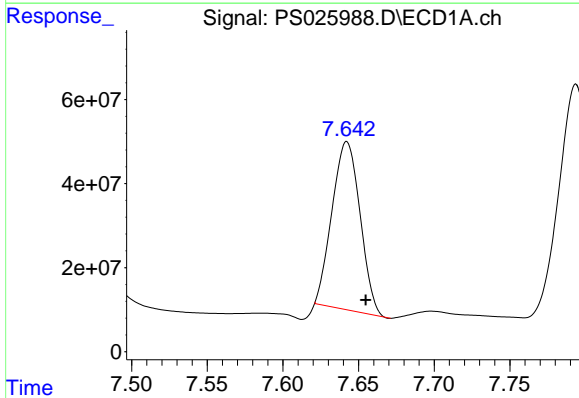
R.T.: 7.459 min
 Delta R.T.: -0.008 min
 Response: 7906133848
 Conc: 717.54 ng/ml

Instrument :
 ECD_S
 ClientSampleId :
 HSTDCCC750



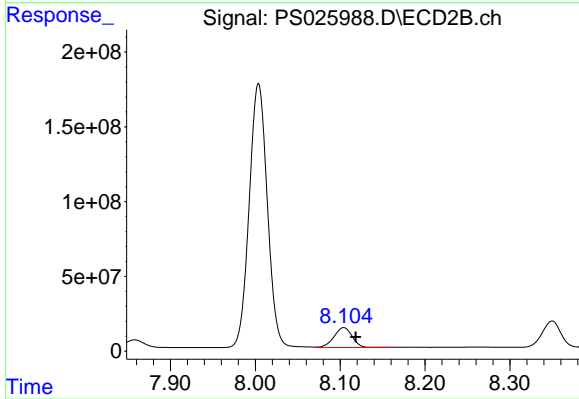
#5 DICAMBA

R.T.: 8.004 min
 Delta R.T.: -0.010 min
 Response: 2618303551
 Conc: 677.63 ng/ml



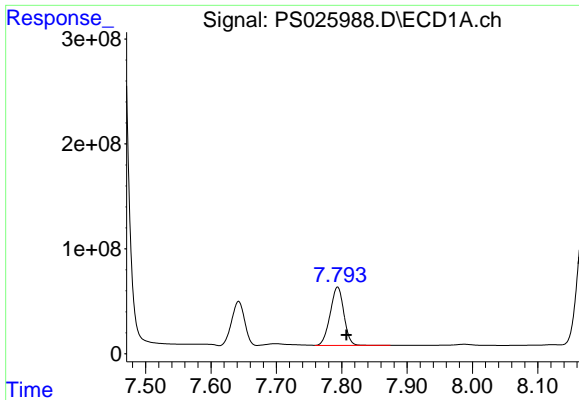
#6 MCP

R.T.: 7.642 min
 Delta R.T.: -0.012 min
 Response: 515790030
 Conc: 65.27 ug/ml



#6 MCP

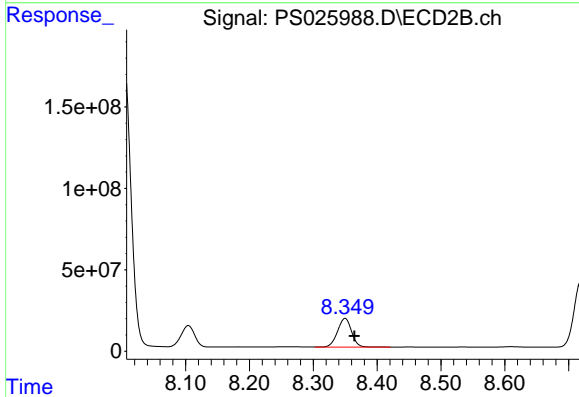
R.T.: 8.104 min
 Delta R.T.: -0.014 min
 Response: 200129763
 Conc: 74.20 ug/ml



#7 MCPA

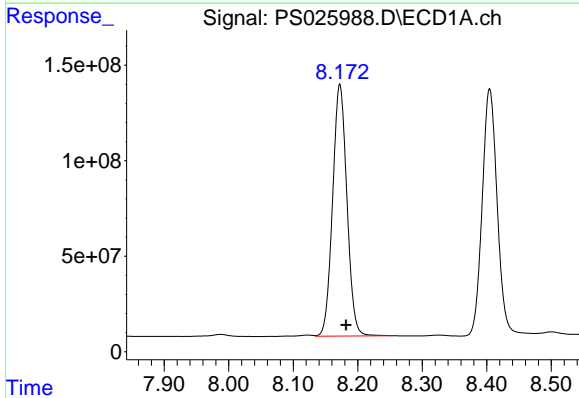
R.T.: 7.794 min
 Delta R.T.: -0.014 min
 Response: 806469087
 Conc: 70.90 ug/ml

Instrument :
 ECD_S
 ClientSampleId :
 HSTDCCC750



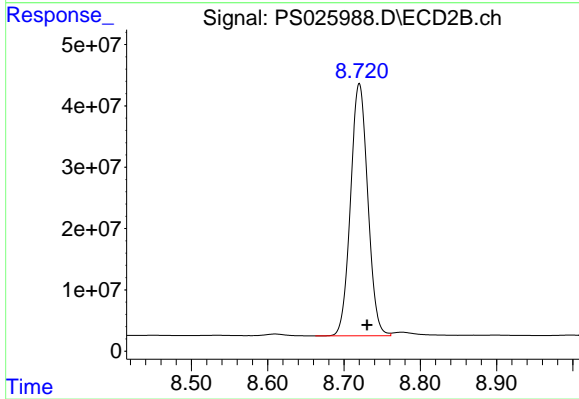
#7 MCPA

R.T.: 8.350 min
 Delta R.T.: -0.015 min
 Response: 269560627
 Conc: 69.97 ug/ml



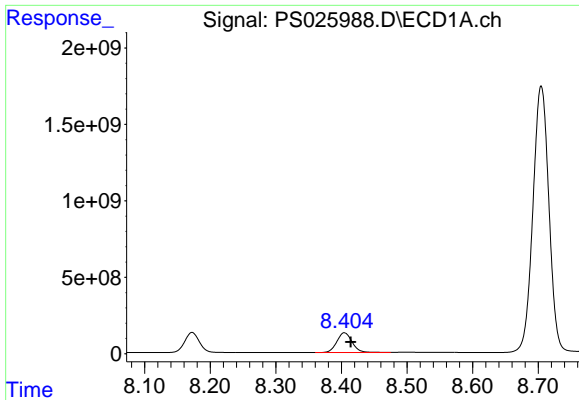
#8 DICHLORPROP

R.T.: 8.172 min
 Delta R.T.: -0.010 min
 Response: 2026980642
 Conc: 718.49 ng/ml



#8 DICHLORPROP

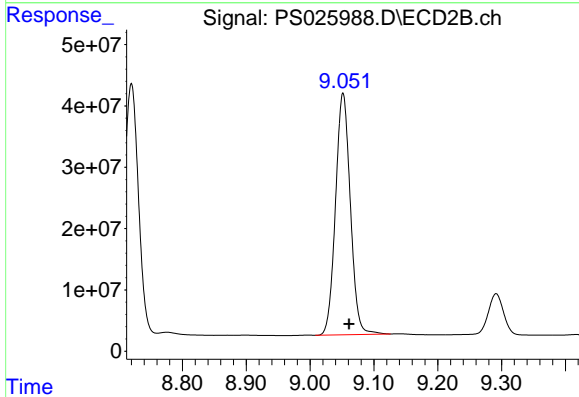
R.T.: 8.720 min
 Delta R.T.: -0.010 min
 Response: 645994503
 Conc: 670.63 ng/ml



#9 2,4-D

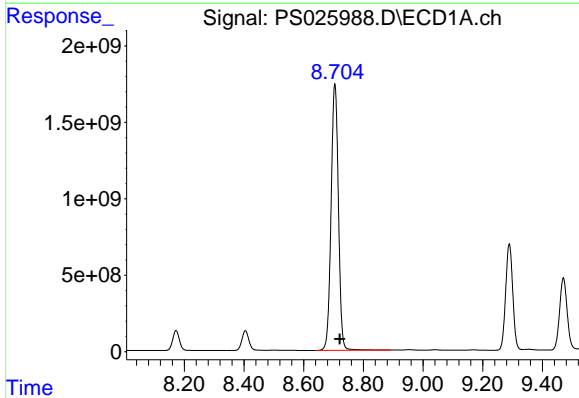
R.T.: 8.405 min
 Delta R.T.: -0.010 min
 Response: 2105315008
 Conc: 712.03 ng/ml

Instrument :
 ECD_S
 ClientSampleId :
 HSTDCCC750



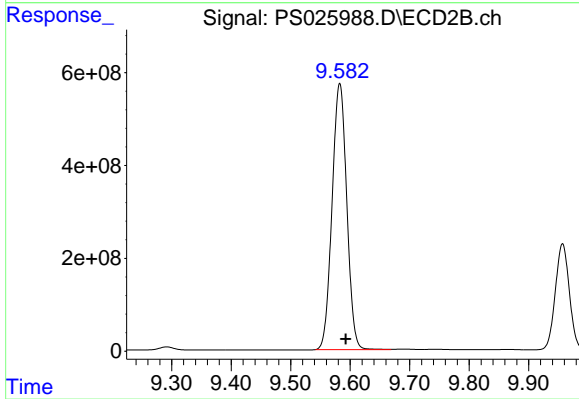
#9 2,4-D

R.T.: 9.052 min
 Delta R.T.: -0.010 min
 Response: 635550941
 Conc: 670.55 ng/ml



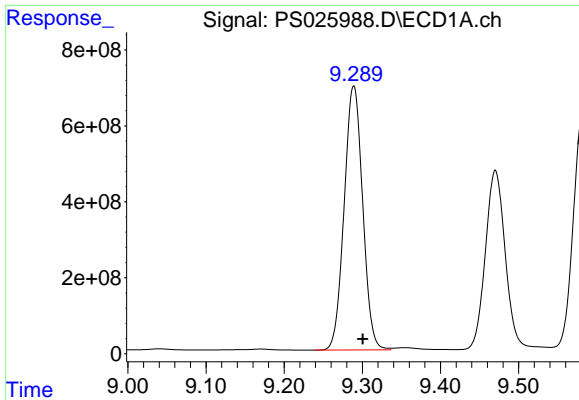
#10 Pentachlorophenol

R.T.: 8.705 min
 Delta R.T.: -0.016 min
 Response: 29666853134
 Conc: 748.61 ng/ml



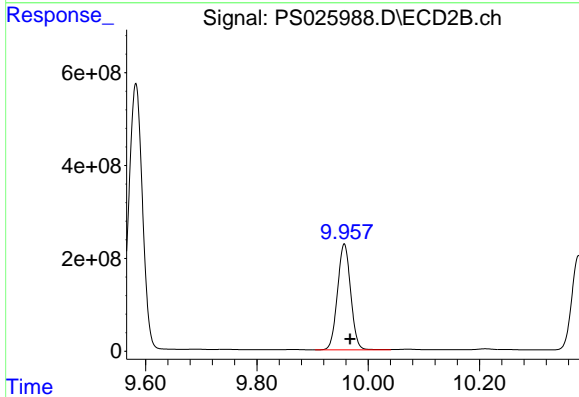
#10 Pentachlorophenol

R.T.: 9.582 min
 Delta R.T.: -0.010 min
 Response: 9839737352
 Conc: 684.63 ng/ml

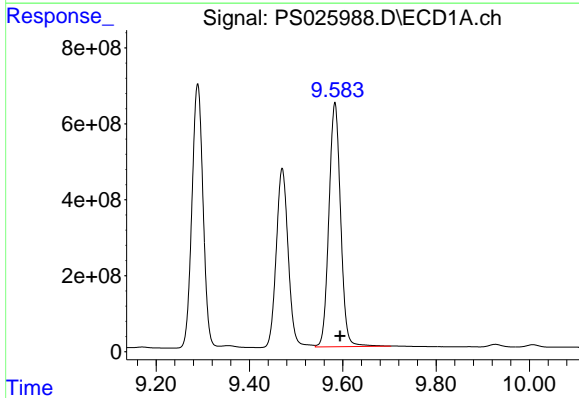


#11 2,4,5-TP (SILVEX)
 R.T.: 9.289 min
 Delta R.T.: -0.011 min
 Response: 11443287952
 Conc: 734.17 ng/ml

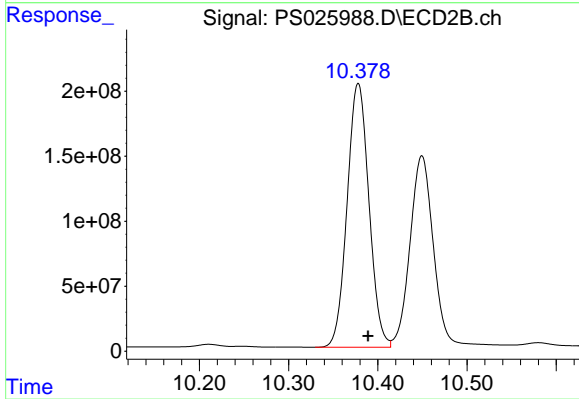
Instrument :
 ECD_S
 ClientSampleId :
 HSTDCCC750



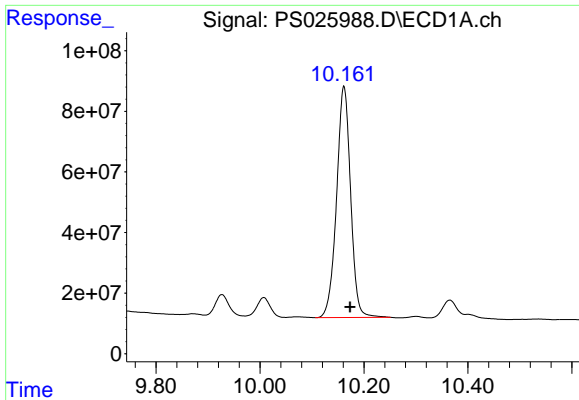
#11 2,4,5-TP (SILVEX)
 R.T.: 9.957 min
 Delta R.T.: -0.010 min
 Response: 3749253220
 Conc: 689.06 ng/ml



#12 2,4,5-T
 R.T.: 9.583 min
 Delta R.T.: -0.011 min
 Response: 11177095740
 Conc: 734.94 ng/ml



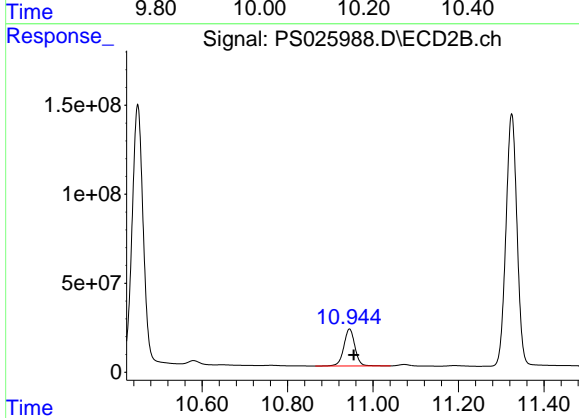
#12 2,4,5-T
 R.T.: 10.378 min
 Delta R.T.: -0.011 min
 Response: 3447408688
 Conc: 690.46 ng/ml



#13 2,4-DB

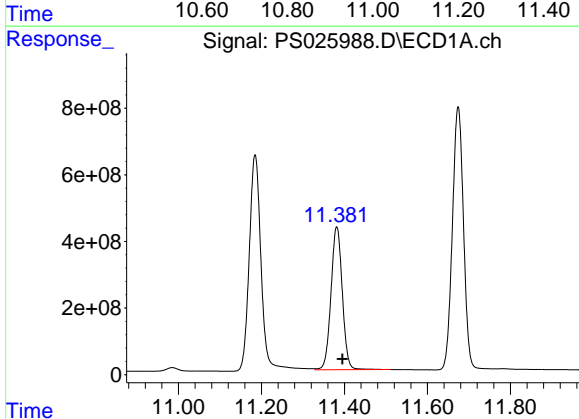
R.T.: 10.162 min
 Delta R.T.: -0.012 min
 Response: 1430037487
 Conc: 729.74 ng/ml

Instrument :
 ECD_S
 ClientSampleId :
 HSTDCCC750



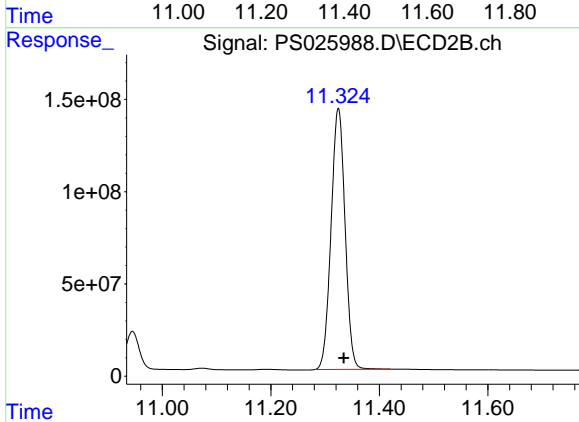
#13 2,4-DB

R.T.: 10.945 min
 Delta R.T.: -0.010 min
 Response: 376190267
 Conc: 679.79 ng/ml



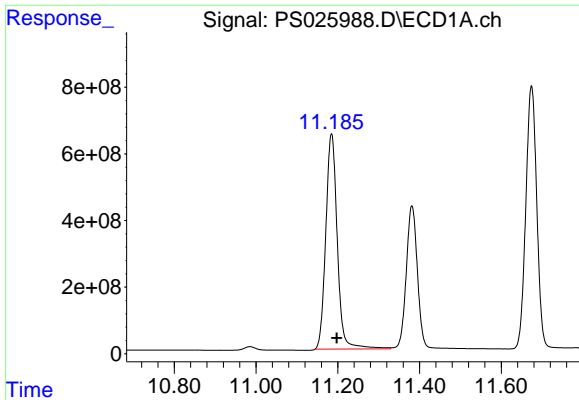
#14 DINOSEB

R.T.: 11.381 min
 Delta R.T.: -0.014 min
 Response: 8127613681
 Conc: 733.26 ng/ml



#14 DINOSEB

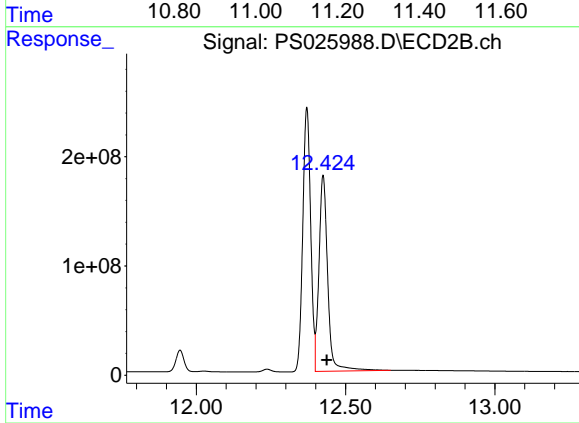
R.T.: 11.325 min
 Delta R.T.: -0.010 min
 Response: 2533238910
 Conc: 705.97 ng/ml



#15 Picloram

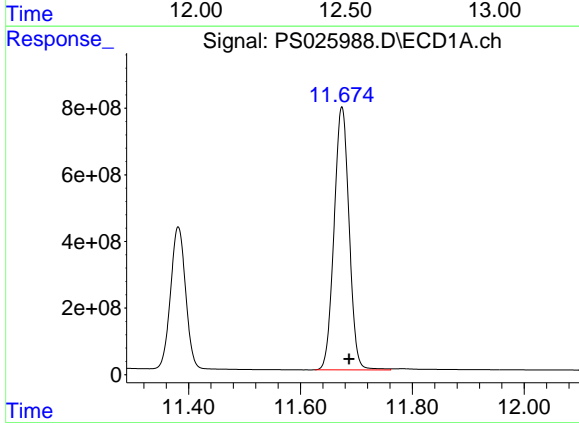
R.T.: 11.185 min
 Delta R.T.: -0.013 min
 Response: 12654403875
 Conc: 707.23 ng/ml

Instrument :
 ECD_S
 ClientSampleId :
 HSTDCCC750



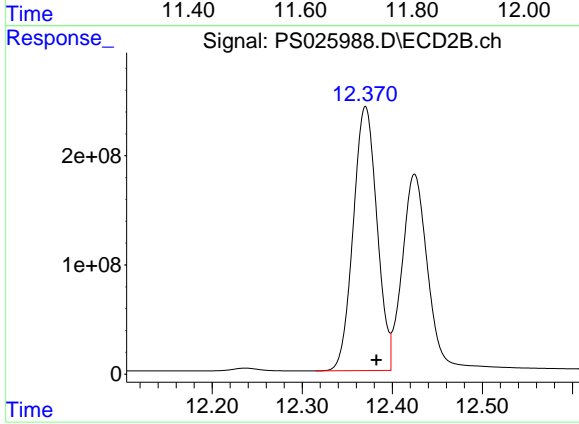
#15 Picloram

R.T.: 12.425 min
 Delta R.T.: -0.013 min
 Response: 3649995954
 Conc: 681.65 ng/ml



#16 DCPA

R.T.: 11.674 min
 Delta R.T.: -0.013 min
 Response: 14717036711
 Conc: 748.54 ng/ml



#16 DCPA

R.T.: 12.370 min
 Delta R.T.: -0.012 min
 Response: 4428184313
 Conc: 687.61 ng/ml