

Data Path : Z:\pestpcbsrv\HPCHEM1\ECD_S\Data\PS021924\
 Data File : PS025989.D
 Signal(s) : Signal #1: ECD1A.ch Signal #2: ECD2B.ch
 Acq On : 19 Feb 2024 17:43
 Operator : AR\AJ
 Sample : PB159104BL
 Misc :
 ALS Vial : 8 Sample Multiplier: 1

Instrument :
 ECD_S
 ClientSampleId :
 PB159104BL

Integration File signal 1: autoint1.e
 Integration File signal 2: autoint2.e
 Quant Time: Feb 20 00:32:40 2024
 Quant Method : Z:\pestpcbsrv\HPCHEM1\ECD_S\Method\PS021424.M
 Quant Title : 8080.M
 QLast Update : Wed Feb 14 15:17:36 2024
 Response via : Initial Calibration
 Integrator: ChemStation

Volume Inj. : 2 µl
 Signal #1 Phase : Rtx-CLPesticides Signal #2 Phase: Rtx-CLPesticides2
 Signal #1 Info : 30M x 0.32mm x0.5 Signal #2 Info : 30M x 0.32mm x 0.25µm

	Compound	RT#1	RT#2	Resp#1	Resp#2	ng/ml	ng/ml

System Monitoring Compounds							
4) S	2,4-DCAA	7.275	7.801	1115.9E6	339.3E6	421.631	388.758
Target Compounds							
1) T	Dalapon	2.701	2.731	3858468	760575	<MDL	<MDL #
2) T	3,5-DICHL...	6.427	6.746	43048810	576545	11.089	<MDL #
3) T	4-Nitroph...	7.054	7.345	45621181	10763506	28.774	22.324
5) T	DICAMBA	7.469	7.997	-269436	4985626	N.D.	1.290
6) T	MCP P	7.634	8.116	1208101	8792758	<MDL	3.260 #
7) T	MCPA	7.802	8.347	93022	6943788	<MDL	1.803 #
8) T	DICHLORPROP	8.179	8.773f	443445	14666031	<MDL	15.225 #
9) T	2,4-D	8.429	9.048	52709540	1805387	17.827	1.905 #
10) T	Pentachlo...	8.712	9.582	18633367	3903213	<MDL	<MDL #
11) T	2,4,5-TP ...	9.298	9.927f	4259498	92685053	<MDL	17.034 #
12) T	2,4,5-T	9.597	10.383	24424286	5842488	1.606	1.170 #
13) T	2,4-DB	10.210	10.974	128.6E6	23443586	65.629	42.364 #
14) T	DINOSEB	11.349f	11.329	291.2E6	24003242	26.274	6.689 #
15) T	Picloram	11.197	12.434	27778893	14669847	1.553	2.740 #
16) T	DCPA	11.672	12.358	11575365	3988062	<MDL	<MDL #

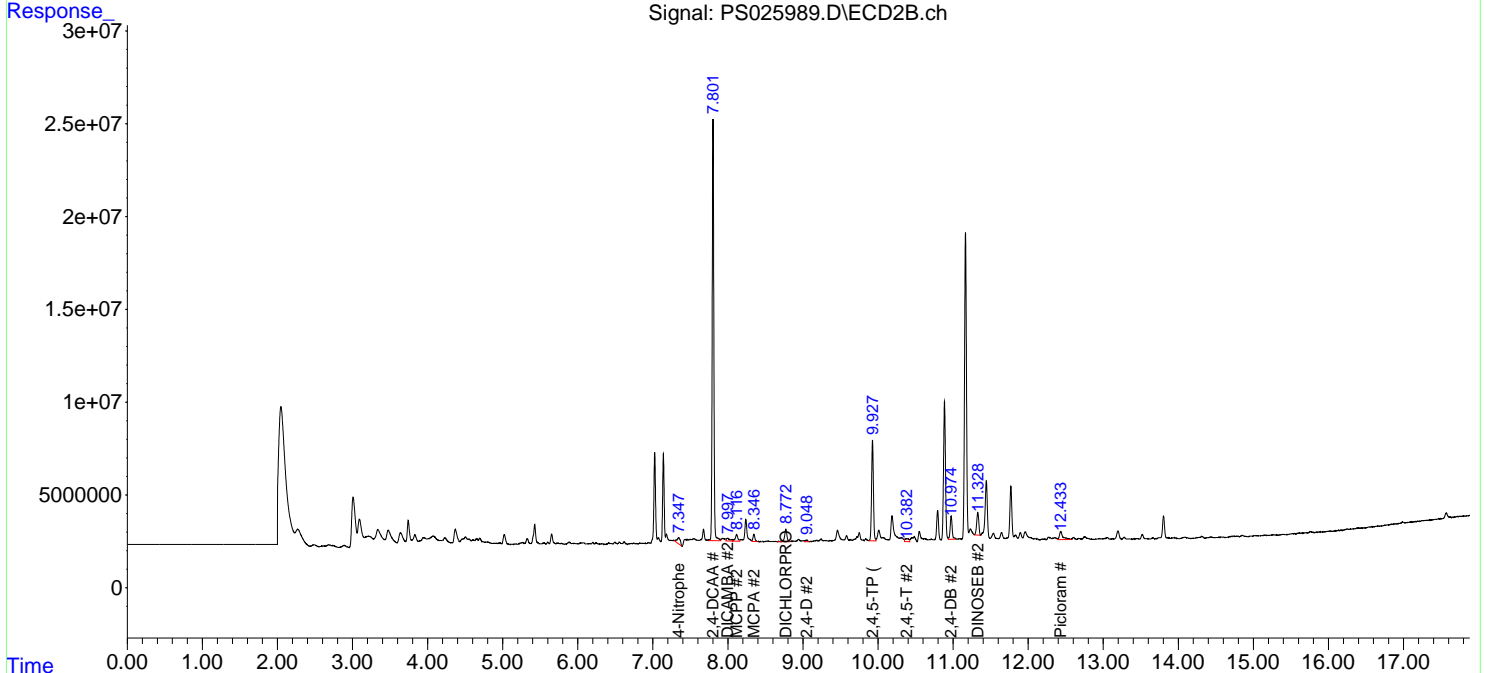
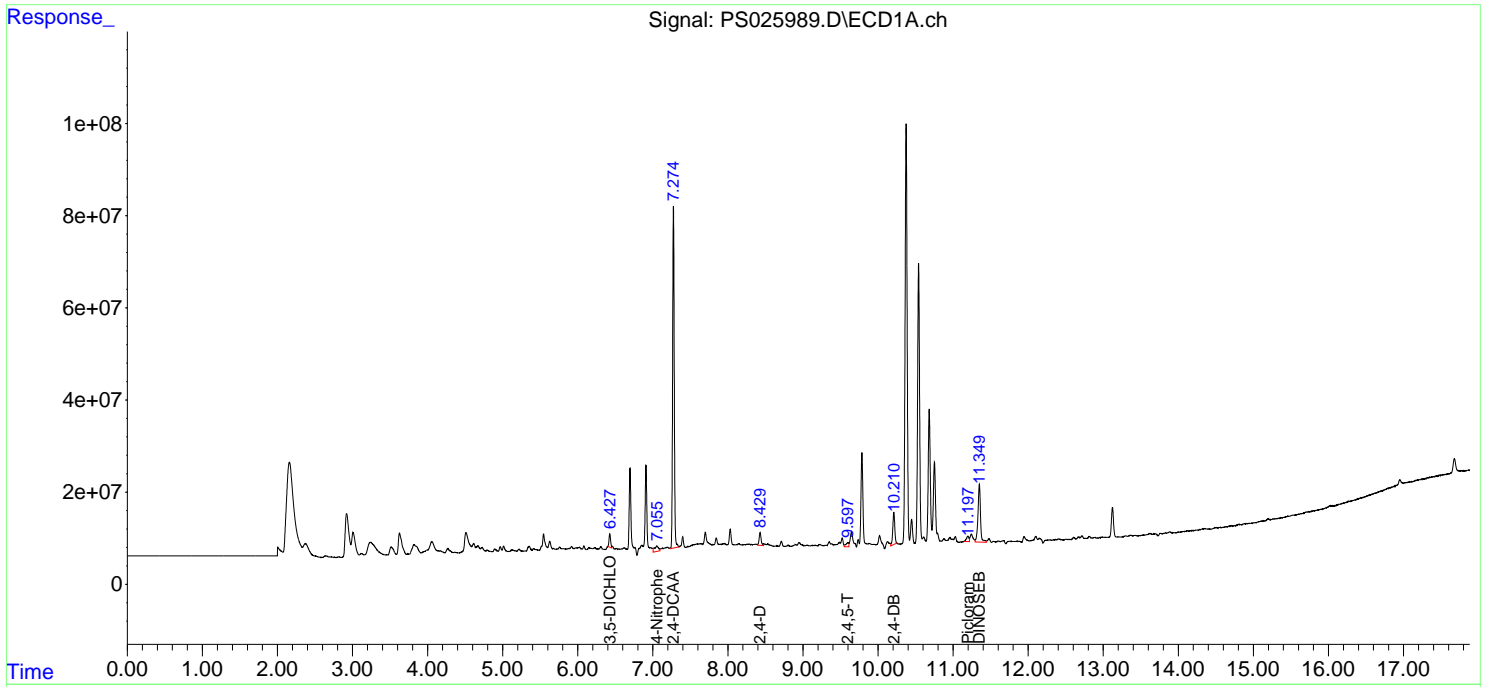
(f)=RT Delta > 1/2 Window (#)=Amounts differ by > 25% (m)=manual int.

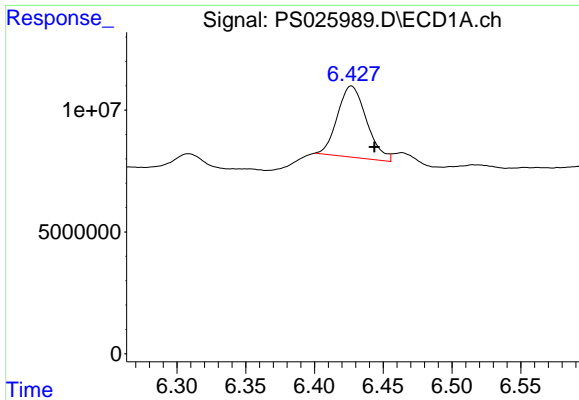
Data Path : Z:\pestpcbsrv\HPCHEM1\ECD_S\Data\PS021924\
 Data File : PS025989.D
 Signal(s) : Signal #1: ECD1A.ch Signal #2: ECD2B.ch
 Acq On : 19 Feb 2024 17:43
 Operator : AR\AJ
 Sample : PB159104BL
 Misc :
 ALS Vial : 8 Sample Multiplier: 1

Instrument :
 ECD_S
 ClientSampleId :
 PB159104BL

Integration File signal 1: autoint1.e
 Integration File signal 2: autoint2.e
 Quant Time: Feb 20 00:32:40 2024
 Quant Method : Z:\pestpcbsrv\HPCHEM1\ECD_S\Method\PS021424.M
 Quant Title : 8080.M
 QLast Update : Wed Feb 14 15:17:36 2024
 Response via : Initial Calibration
 Integrator: ChemStation

Volume Inj. : 2 µl
 Signal #1 Phase : Rtx-CLPesticides Signal #2 Phase: Rtx-CLPesticides2
 Signal #1 Info : 30M x 0.32mm x0.5 Signal #2 Info : 30M x 0.32mm x 0.25µm

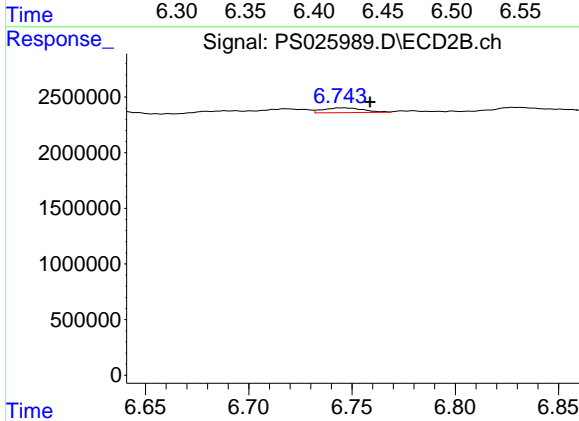




#2 3,5-DICHLOROBenZOIC ACID

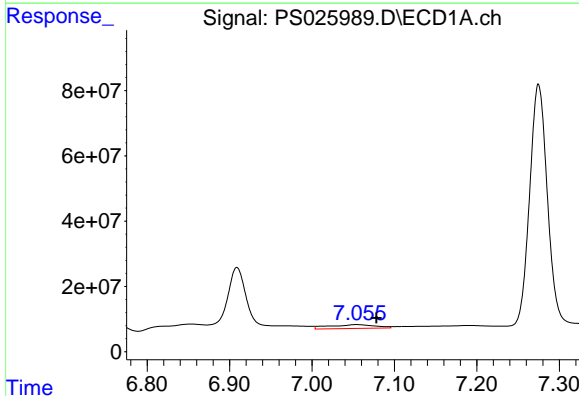
R.T.: 6.427 min
 Delta R.T.: -0.017 min
 Response: 43048810
 Conc: 11.09 ng/ml

Instrument :
 ECD_S
 ClientSampleId :
 PB159104BL



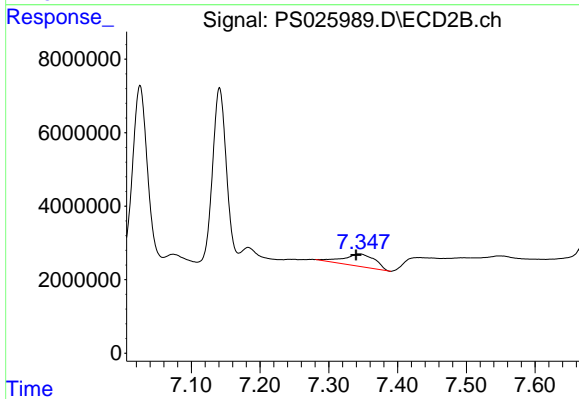
#2 3,5-DICHLOROBenZOIC ACID

R.T.: 6.746 min
 Delta R.T.: -0.013 min
 Response: 576545
 Conc: N.D.



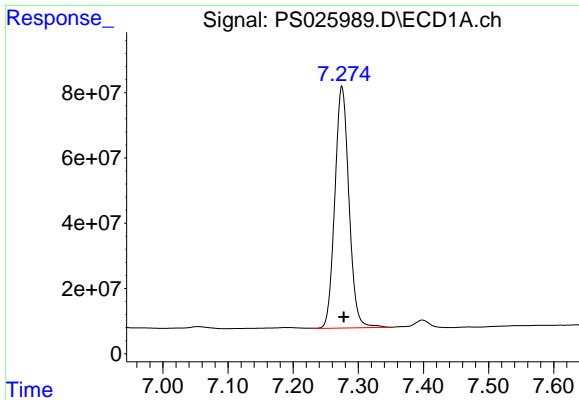
#3 4-Nitrophenol

R.T.: 7.054 min
 Delta R.T.: -0.024 min
 Response: 45621181
 Conc: 28.77 ng/ml



#3 4-Nitrophenol

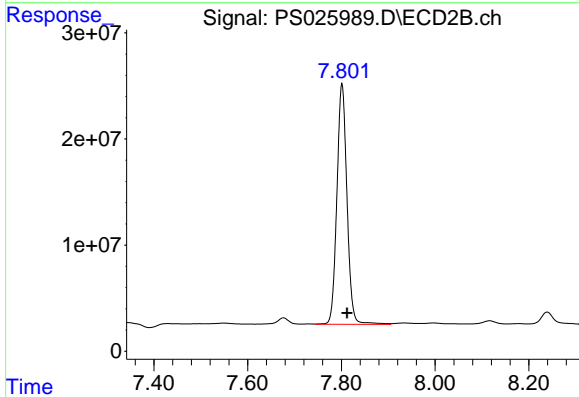
R.T.: 7.345 min
 Delta R.T.: 0.005 min
 Response: 10763506
 Conc: 22.32 ng/ml



#4 2,4-DCAA

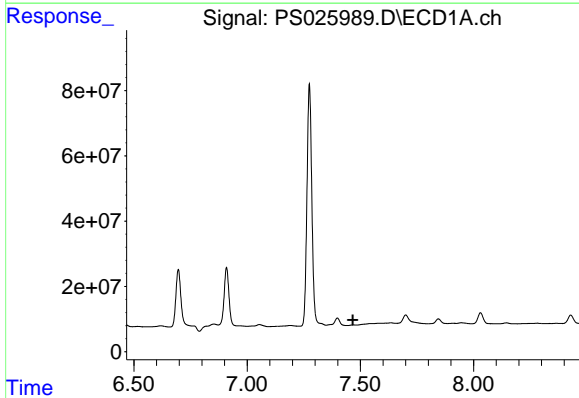
R.T.: 7.275 min
 Delta R.T.: -0.003 min
 Response: 1115878573
 Conc: 421.63 ng/ml

Instrument :
 ECD_S
 ClientSampleId :
 PB159104BL



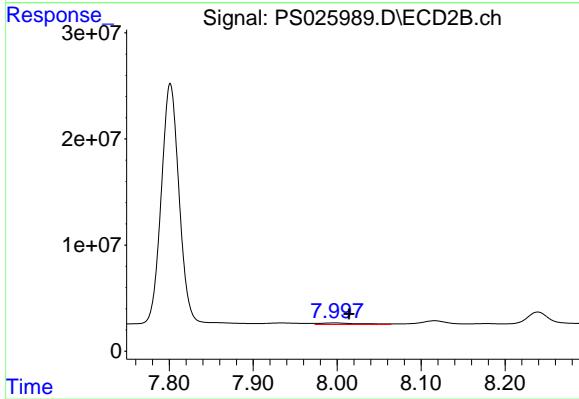
#4 2,4-DCAA

R.T.: 7.801 min
 Delta R.T.: -0.011 min
 Response: 339328446
 Conc: 388.76 ng/ml



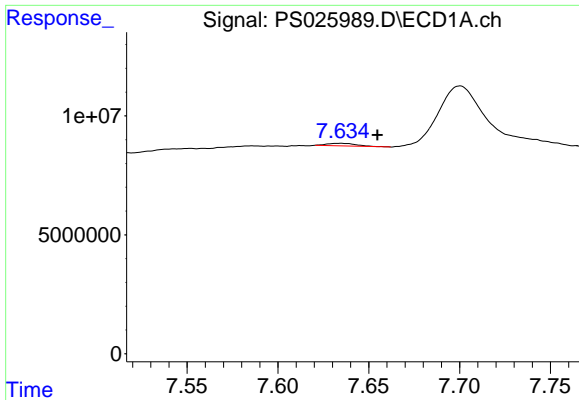
#5 DICAMBA

R.T.: 7.469 min
 Delta R.T.: 0.002 min
 Response: -269436
 Conc: N.D.



#5 DICAMBA

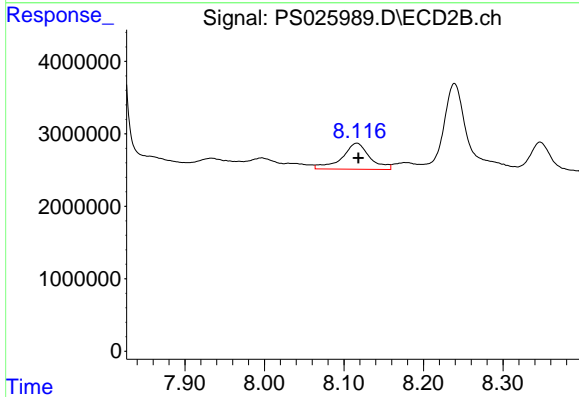
R.T.: 7.997 min
 Delta R.T.: -0.018 min
 Response: 4985626
 Conc: 1.29 ng/ml



#6 MCP

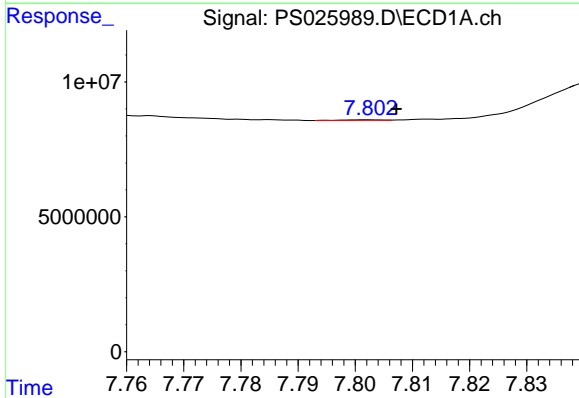
R.T.: 7.634 min
 Delta R.T.: -0.021 min
 Response: 1208101
 Conc: N.D.

Instrument :
 ECD_S
 ClientSampleId :
 PB159104BL



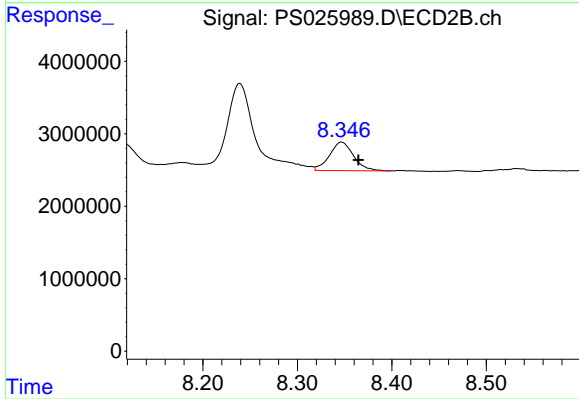
#6 MCP

R.T.: 8.116 min
 Delta R.T.: -0.002 min
 Response: 8792758
 Conc: 3.26 ug/ml



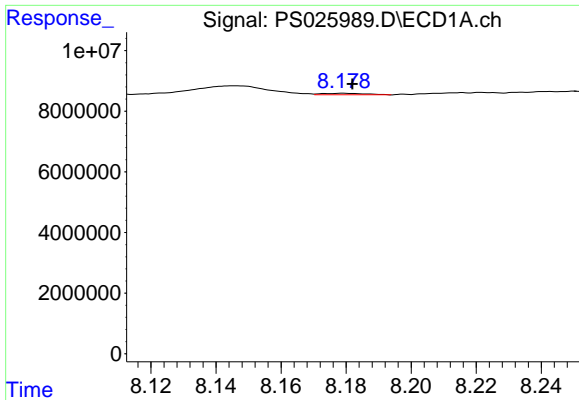
#7 MCP

R.T.: 7.802 min
 Delta R.T.: -0.005 min
 Response: 93022
 Conc: N.D.



#7 MCP

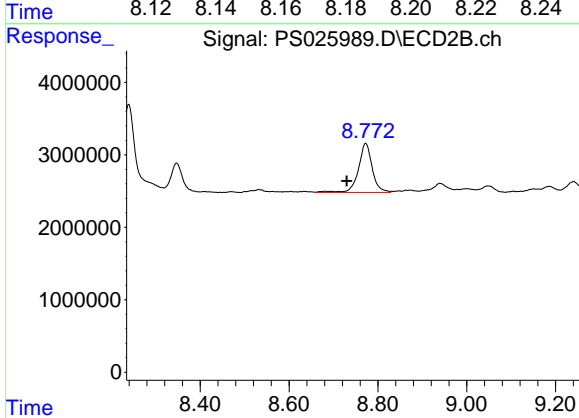
R.T.: 8.347 min
 Delta R.T.: -0.018 min
 Response: 6943788
 Conc: 1.80 ug/ml



#8 DICHLORPROP

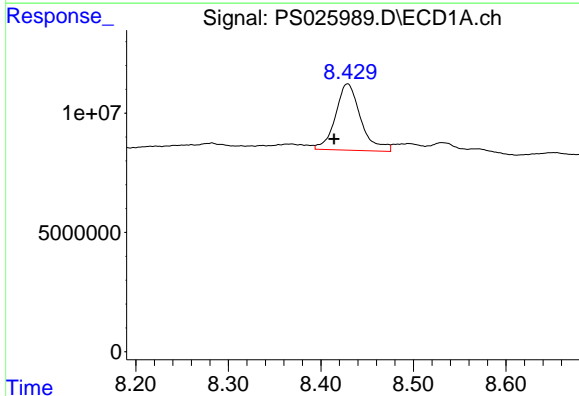
R.T.: 8.179 min
 Delta R.T.: -0.003 min
 Response: 443445
 Conc: N.D.

Instrument :
 ECD_S
 ClientSampleId :
 PB159104BL



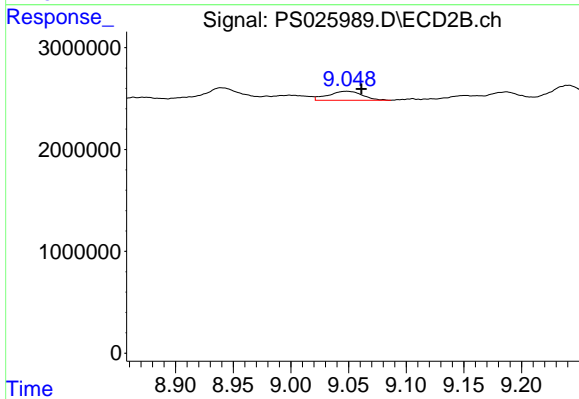
#8 DICHLORPROP

R.T.: 8.773 min
 Delta R.T.: 0.042 min
 Response: 14666031
 Conc: 15.23 ng/ml



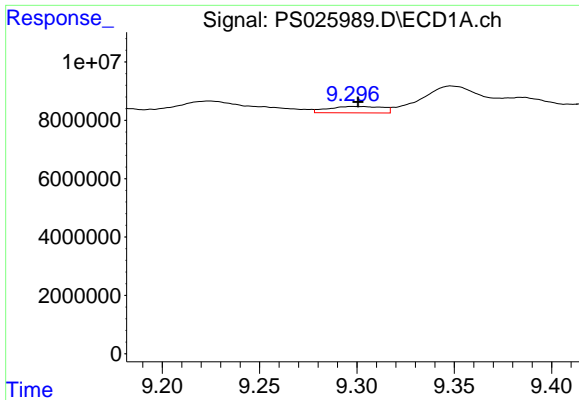
#9 2,4-D

R.T.: 8.429 min
 Delta R.T.: 0.015 min
 Response: 52709540
 Conc: 17.83 ng/ml



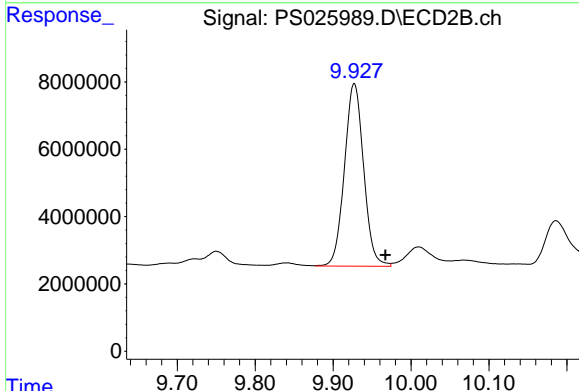
#9 2,4-D

R.T.: 9.048 min
 Delta R.T.: -0.013 min
 Response: 1805387
 Conc: 1.90 ng/ml

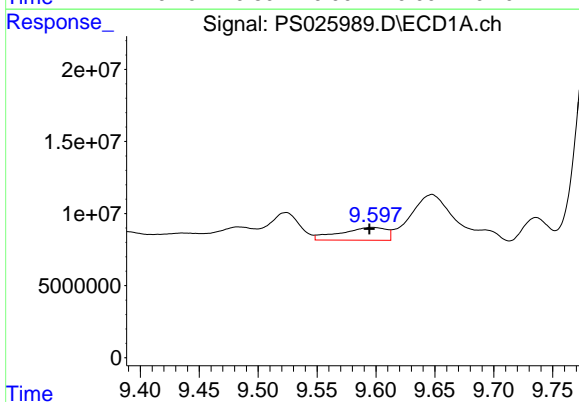


#11 2,4,5-TP (SILVEX)
 R.T.: 9.298 min
 Delta R.T.: -0.002 min
 Response: 4259498
 Conc: N.D.

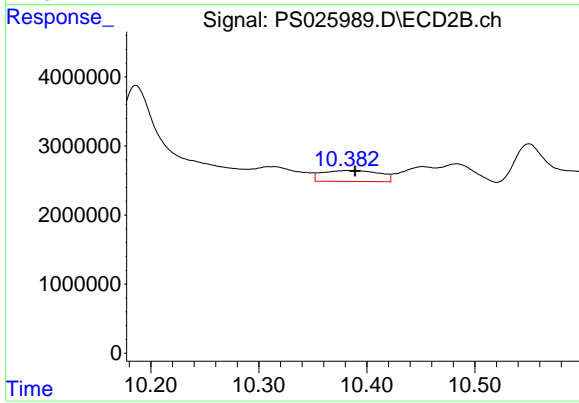
Instrument :
 ECD_S
 ClientSampleId :
 PB159104BL



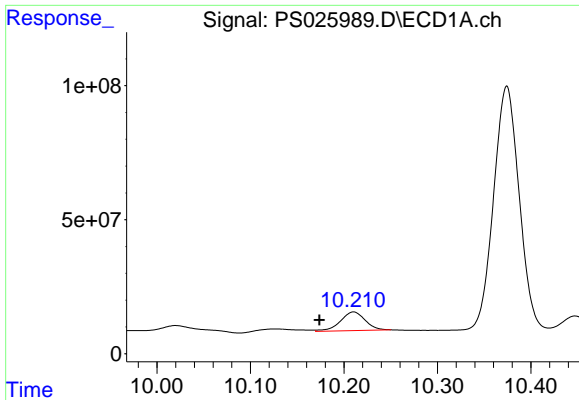
#11 2,4,5-TP (SILVEX)
 R.T.: 9.927 min
 Delta R.T.: -0.040 min
 Response: 92685053
 Conc: 17.03 ng/ml



#12 2,4,5-T
 R.T.: 9.597 min
 Delta R.T.: 0.003 min
 Response: 24424286
 Conc: 1.61 ng/ml



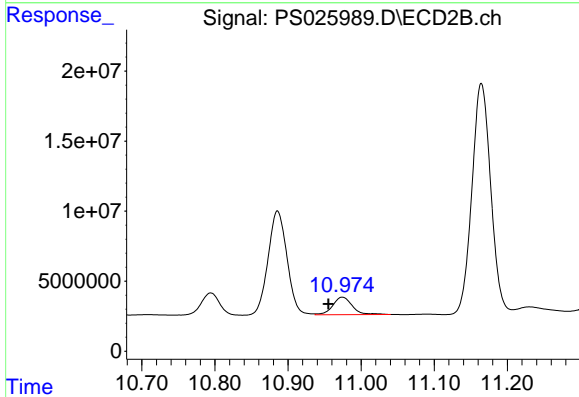
#12 2,4,5-T
 R.T.: 10.383 min
 Delta R.T.: -0.006 min
 Response: 5842488
 Conc: 1.17 ng/ml



#13 2,4-DB

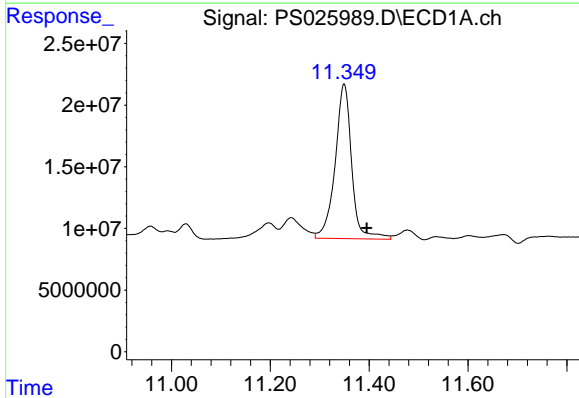
R.T.: 10.210 min
 Delta R.T.: 0.037 min
 Response: 128610137
 Conc: 65.63 ng/ml

Instrument :
 ECD_S
 ClientSampleId :
 PB159104BL



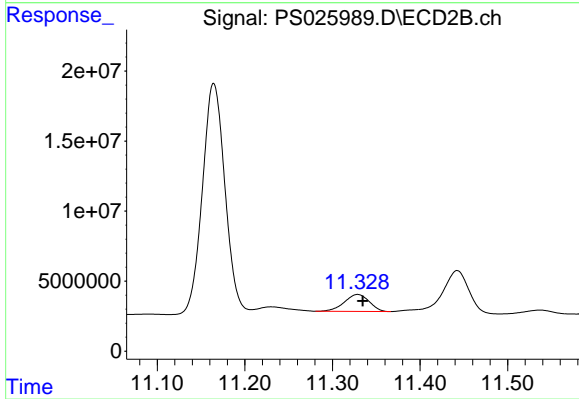
#13 2,4-DB

R.T.: 10.974 min
 Delta R.T.: 0.019 min
 Response: 23443586
 Conc: 42.36 ng/ml



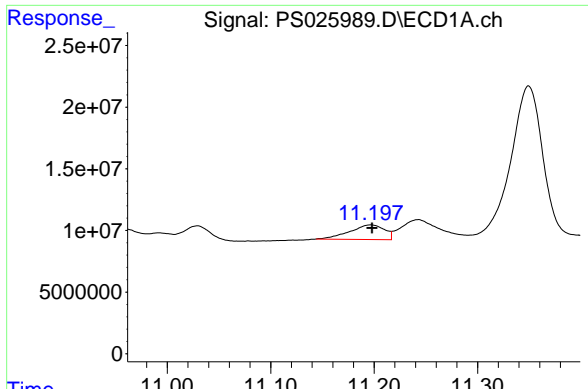
#14 DINOSEB

R.T.: 11.349 min
 Delta R.T.: -0.046 min
 Response: 291224772
 Conc: 26.27 ng/ml



#14 DINOSEB

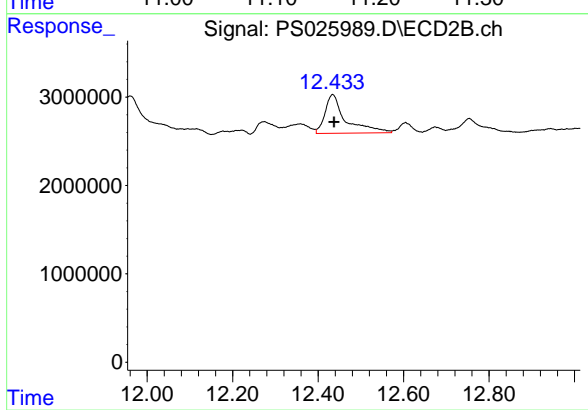
R.T.: 11.329 min
 Delta R.T.: -0.006 min
 Response: 24003242
 Conc: 6.69 ng/ml



#15 Picloram

R.T.: 11.197 min
Delta R.T.: -0.001 min
Response: 27778893
Conc: 1.55 ng/ml

Instrument :
ECD_S
ClientSampleId :
PB159104BL



#15 Picloram

R.T.: 12.434 min
Delta R.T.: -0.003 min
Response: 14669847
Conc: 2.74 ng/ml