

Data Path : Z:\pestpcbsrv\HPCHEM1\ECD_S\Data\PS022019\
 Data File : PS003280.D
 Signal(s) : Signal #1: ECD1A.ch Signal #2: ECD2B.ch
 Acq On : 20 Feb 2019 13:16
 Operator : EI\SJ
 Sample : K1518-10
 Misc :
 ALS Vial : 4 Sample Multiplier: 1

Instrument :
 ECD_S
ClientSampleId :
 CABLE-BRIDGE-FOUNDATION-D-5

Integration File signal 1: autoint1.e
 Integration File signal 2: autoint2.e
 Quant Time: Feb 20 21:56:49 2019
 Quant Method : Z:\pestpcbsrv\HPCHEM1\ECD_S\Method\PS012819.M
 Quant Title : 8080.M
 QLast Update : Tue Jan 29 06:11:45 2019
 Response via : Initial Calibration
 Integrator: ChemStation

Volume Inj. : 2 µl
 Signal #1 Phase : Rtx-CLPesticides Signal #2 Phase: Rtx-CLPesticides2
 Signal #1 Info : 30M x 0.32mm x0.5 Signal #2 Info : 30M x 0.32mm x 0.25µm

| Compound | RT#1 | RT#2 | Resp#1 | Resp#2 | ng/ml | ng/ml |
|-----------------------------|--------|--------|----------|----------|---------|----------|
| ----- | | | | | | |
| System Monitoring Compounds | | | | | | |
| 4) S 2,4-DCAA | 11.282 | 10.779 | 184.7E6 | 234.2E6 | 486.538 | 547.667 |
| Target Compounds | | | | | | |
| 2) T 3,5-DICHL... | 0.000 | 9.026 | 0 | 3262466 | N.D. | 5.789 # |
| 6) T MCPP | 11.970 | 0.000 | 13850902 | 0 | 11.561 | N.D. # |
| 15) T Picloram | 16.849 | 16.722 | 2309351 | 39010417 | 0.730 | 12.976 # |
| 16) T DCPA | 0.000 | 16.722 | 0 | 39010417 | N.D. | 12.594 # |
| ----- | | | | | | |

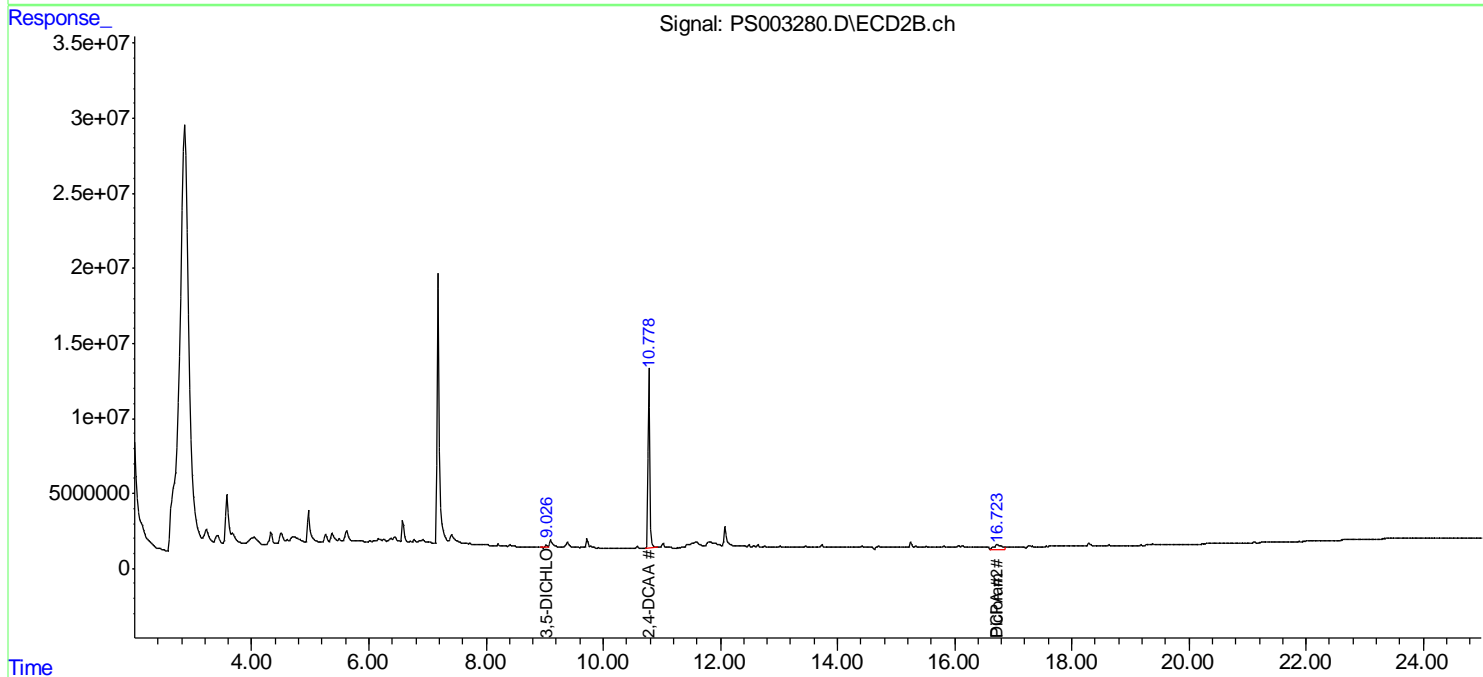
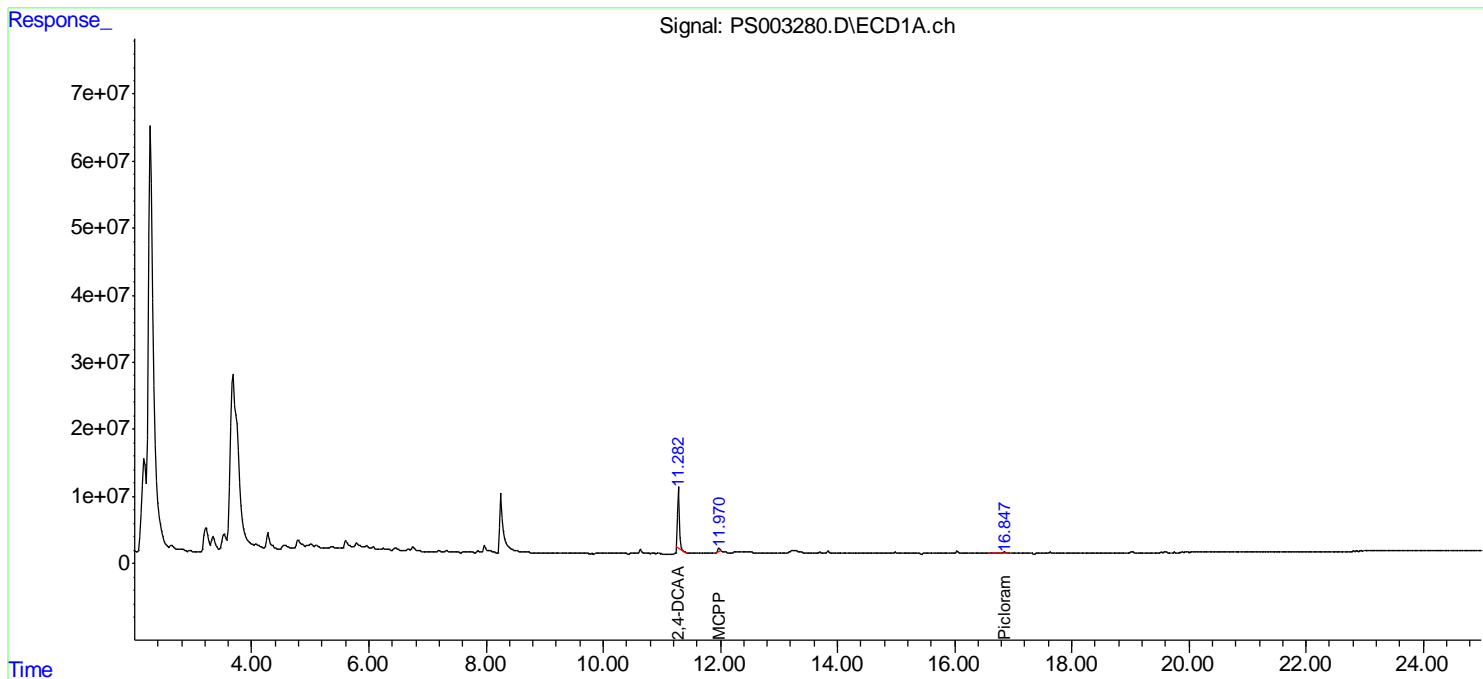
(f)=RT Delta > 1/2 Window (#)=Amounts differ by > 25% (m)=manual int.

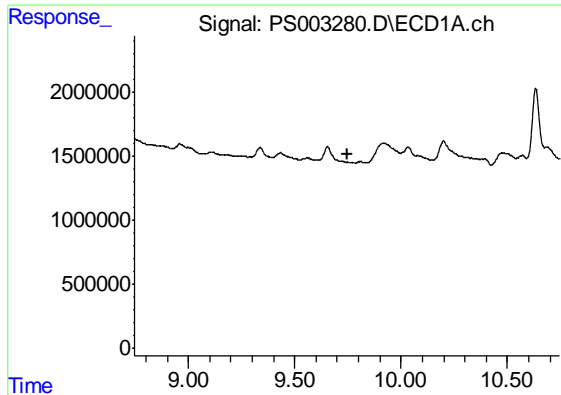
Data Path : Z:\pestpcbsrv\HPCHEM1\ECD_S\Data\PS022019\
 Data File : PS003280.D
 Signal(s) : Signal #1: ECD1A.ch Signal #2: ECD2B.ch
 Acq On : 20 Feb 2019 13:16
 Operator : EI\SJ
 Sample : K1518-10
 Misc :
 ALS Vial : 4 Sample Multiplier: 1

Instrument :
 ECD_S
ClientSampleId :
 CABLE-BRIDGE-FOUNDATION-D-5

Integration File signal 1: autoint1.e
 Integration File signal 2: autoint2.e
 Quant Time: Feb 20 21:56:49 2019
 Quant Method : Z:\pestpcbsrv\HPCHEM1\ECD_S\Method\PS012819.M
 Quant Title : 8080.M
 QLast Update : Tue Jan 29 06:11:45 2019
 Response via : Initial Calibration
 Integrator: ChemStation

Volume Inj. : 2 µl
 Signal #1 Phase : Rtx-CLPesticides Signal #2 Phase: Rtx-CLPesticides2
 Signal #1 Info : 30M x 0.32mm x0.5 Signal #2 Info : 30M x 0.32mm x 0.25µm

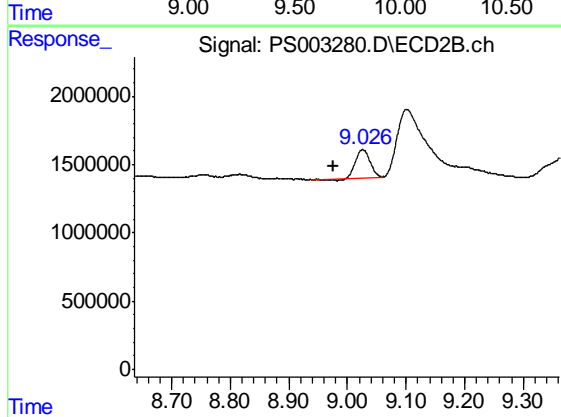




#2 3,5-DICHLOROBENZOIC ACID

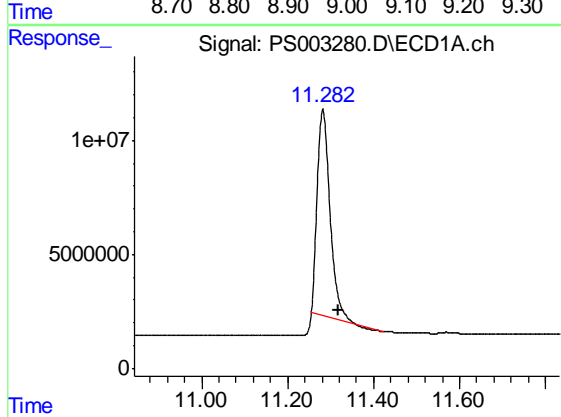
R.T.: 0.000 min
 Exp R.T. : 9.745 min
 Response: 0
 Conc: N.D.

Instrument :
 ECD_S
ClientSampleId :
 CABLE-BRIDGE-FOUNDATION-D-5



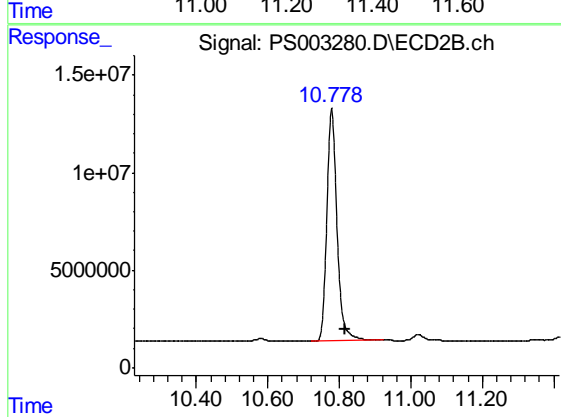
#2 3,5-DICHLOROBENZOIC ACID

R.T.: 9.026 min
 Delta R.T.: 0.050 min
 Response: 3262466
 Conc: 5.79 ng/ml



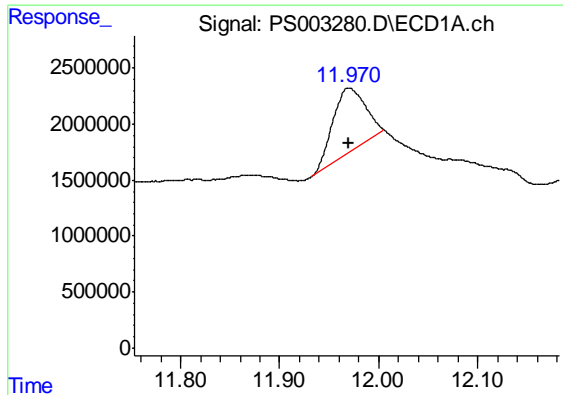
#4 2,4-DCAA

R.T.: 11.282 min
 Delta R.T.: -0.036 min
 Response: 184709751
 Conc: 486.54 ng/ml



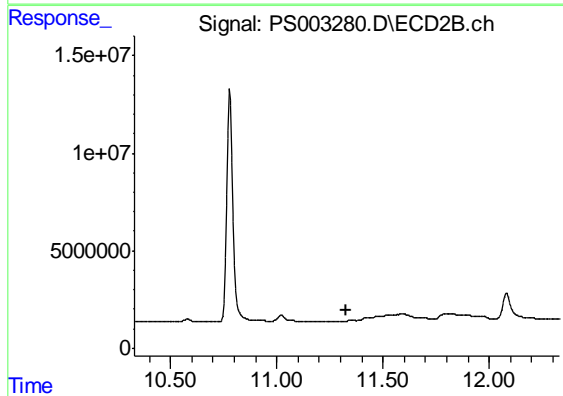
#4 2,4-DCAA

R.T.: 10.779 min
 Delta R.T.: -0.038 min
 Response: 234152610
 Conc: 547.67 ng/ml

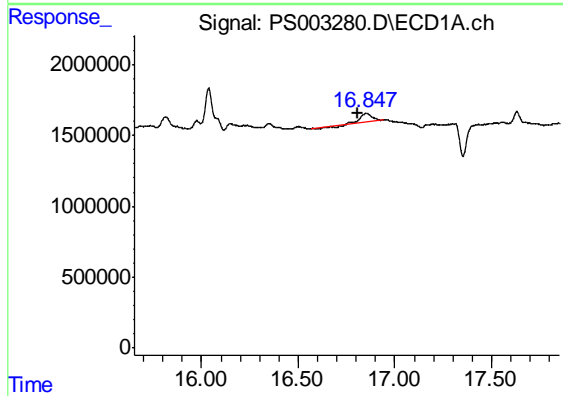


#6 MCPP
 R.T.: 11.970 min
 Delta R.T.: 0.000 min
 Response: 13850902
 Conc: 11.56 ug/ml

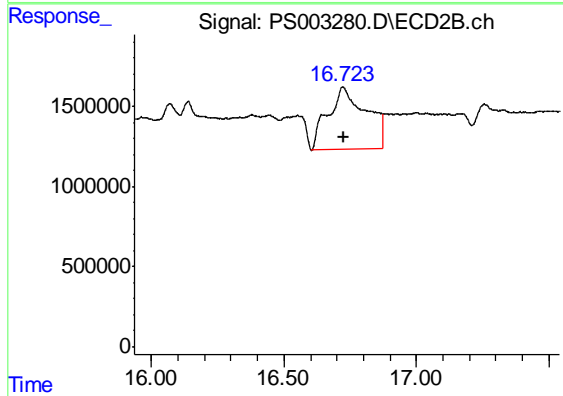
Instrument :
 ECD_S
ClientSampled :
 CABLE-BRIDGE-FOUNDATION-D-5



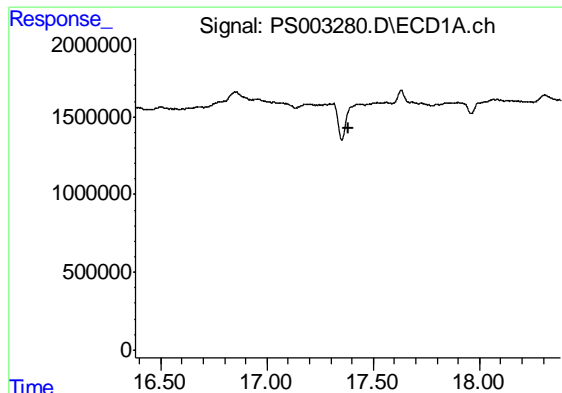
#6 MCPP
 R.T.: 0.000 min
 Exp R.T. : 11.330 min
 Response: 0
 Conc: N.D.



#15 Picloram
 R.T.: 16.849 min
 Delta R.T.: 0.044 min
 Response: 2309351
 Conc: 0.73 ng/ml



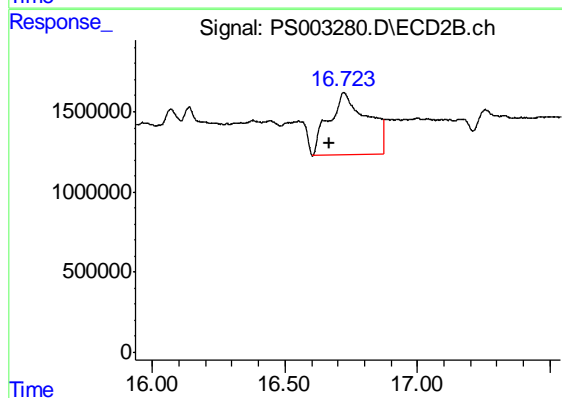
#15 Picloram
 R.T.: 16.722 min
 Delta R.T.: -0.003 min
 Response: 39010417
 Conc: 12.98 ng/ml



#16 DCPA

R.T.: 0.000 min
Exp R.T. : 17.382 min
Response: 0
Conc: N.D.

Instrument :
ECD_S
ClientSampleId :
CABLE-BRIDGE-FOUNDATION-D-5



#16 DCPA

R.T.: 16.722 min
Delta R.T.: 0.052 min
Response: 39010417
Conc: 12.59 ng/ml